



# PUBLIC BUILDING COMMISSION OF CHICAGO

## WILLIAM J. ONAHAN ELEMENTARY SCHOOL LINKED ANNEX





# PUBLIC BUILDING COMMISSION OF CHICAGO

WILLIAM J. ONAHAN ELEMENTARY SCHOOL LINKED ANNEX

---

WELCOME

KAREN KOEGLER,  
*PRINCIPAL,*

*WILLIAM J. ONAHAN ELEMENTARY SCHOOL*



# PUBLIC BUILDING COMMISSION OF CHICAGO

WILLIAM J. ONAHAN ELEMENTARY SCHOOL LINKED ANNEX

---

## REMARKS

MARY O'CONNOR,  
*41<sup>ST</sup> WARD ALDERMAN, CITY OF CHICAGO*



# PUBLIC BUILDING COMMISSION OF CHICAGO

## WILLIAM J. ONAHAN ELEMENTARY SCHOOL LINKED ANNEX

---

## AGENDA

### WELCOME

KAREN KOEGLER, *PRINCIPAL, WILLIAM J. ONAHAN ELEMENTARY SCHOOL*

### REMARKS

MARY O'CONNOR, *41<sup>ST</sup> WARD ALDERMAN, CITY OF CHICAGO*

### INTRODUCTIONS

JOSE ALVAREZ, *SCHOOL RELATIONS, CPS*

### BUILDING DESIGN

ERIN LAVIN CABONARGI, *EXECUTIVE DIRECTOR, PBC*

### QUESTION AND ANSWER

JOSE ALVAREZ, *SCHOOL RELATIONS, CPS*



# PUBLIC BUILDING COMMISSION OF CHICAGO

WILLIAM J. ONAHAN ELEMENTARY SCHOOL LINKED ANNEX

---

## PBC PRESENTATION ON BUILDING DESIGN




ERIN LAVIN CABONARGI,  
*EXECUTIVE DIRECTOR, PBC*

# PUBLIC BUILDING COMMISSION OF CHICAGO

## WILLIAM J. ONAHAN ELEMENTARY SCHOOL LINKED ANNEX

Onahan Elementary School: 6634 W. Raven St.



- Proposed Site 
- TIF District 
- Ward Boundary 



# PUBLIC BUILDING COMMISSION OF CHICAGO

## WILLIAM J. ONAHAN ELEMENTARY SCHOOL LINKED ANNEX





# PUBLIC BUILDING COMMISSION OF CHICAGO

## WILLIAM J. ONAHAN ELEMENTARY SCHOOL LINKED ANNEX







# PUBLIC BUILDING COMMISSION OF CHICAGO

## WILLIAM J. ONAHAN ELEMENTARY SCHOOL LINKED ANNEX





# PUBLIC BUILDING COMMISSION OF CHICAGO

## WILLIAM J. ONAHAN ELEMENTARY SCHOOL LINKED ANNEX





# PUBLIC BUILDING COMMISSION OF CHICAGO

## WILLIAM J. ONAHAN ELEMENTARY SCHOOL LINKED ANNEX



©2004 James Steinkamp: Steinkamp/Ballogg Photography



©2004 James Steinkamp: Steinkamp/Ballogg Photography



# PUBLIC BUILDING COMMISSION OF CHICAGO

WILLIAM J. ONAHAN ELEMENTARY SCHOOL LINKED ANNEX

---

## PROJECT PROGRAM:

### Existing Building:

- 58,588 SF
- 21 Classrooms
- Library
- Gymnasium
- Auditorium
- Kitchen & Dining Facility
- Administrative Suite

### New Annex & Renovations:

- 23,678 SF
- 9 Classrooms
- Computer Lab
- Linked Connection to Existing Building
- Renovation of existing computer classroom to enlarge Library

### Green Roof:

- Partial Green & Reflective Roof

# PUBLIC BUILDING COMMISSION OF CHICAGO

## WILLIAM J. ONAHAN ELEMENTARY SCHOOL LINKED ANNEX

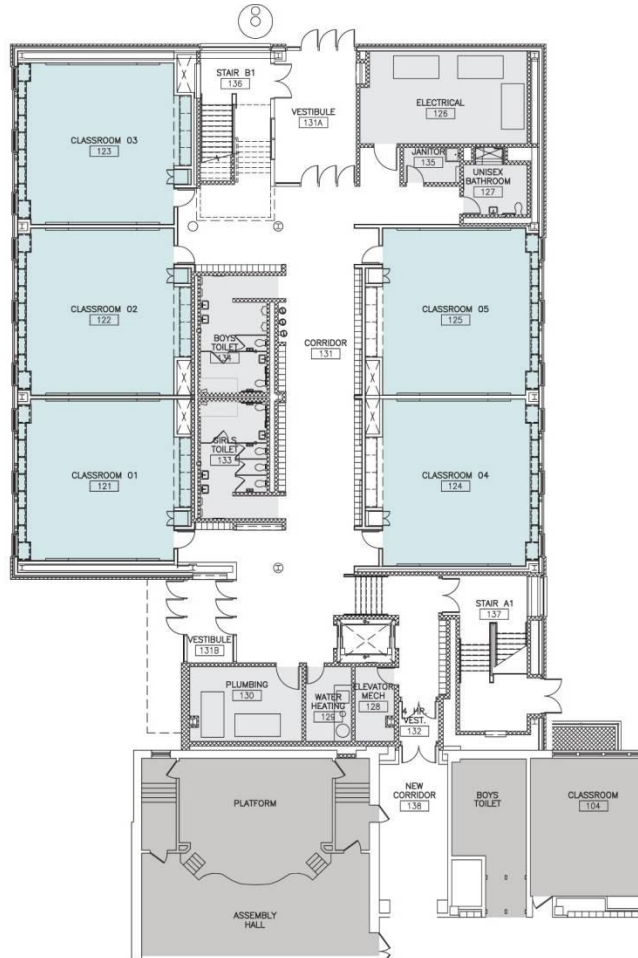


Site Plan - William J. Onahan Elementary

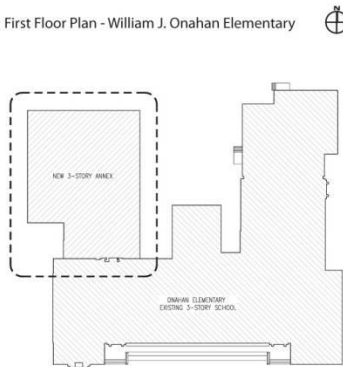


# PUBLIC BUILDING COMMISSION OF CHICAGO

## WILLIAM J. ONAHAN ELEMENTARY SCHOOL LINKED ANNEX



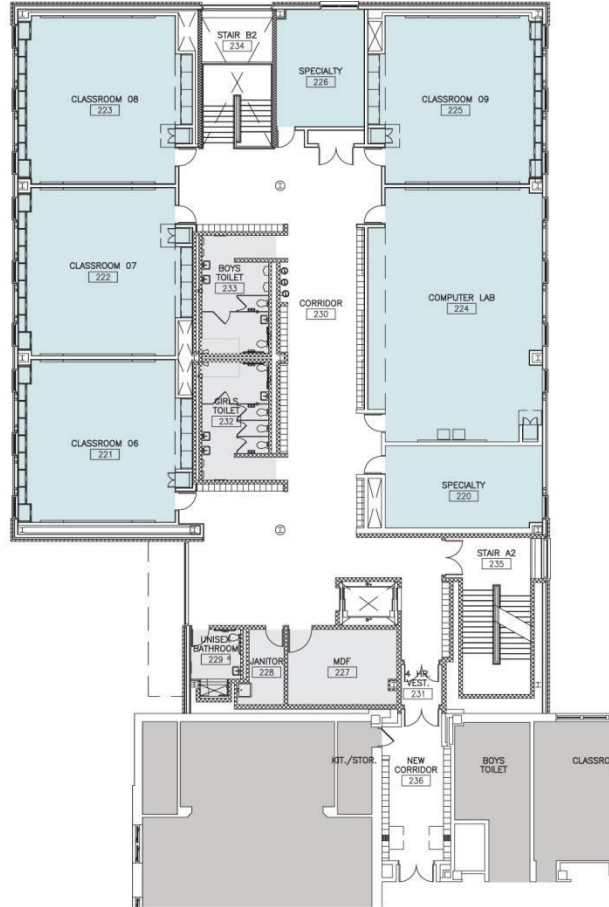
First Floor Plan - William J. Onahan Elementary



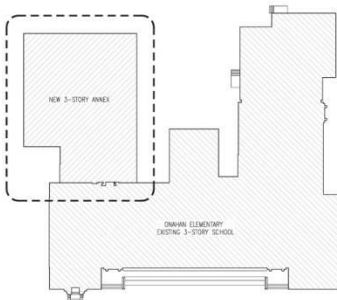
CORE ACADEMIC  
 BUILDING SERVICES

# PUBLIC BUILDING COMMISSION OF CHICAGO

## WILLIAM J. ONAHAN ELEMENTARY SCHOOL LINKED ANNEX



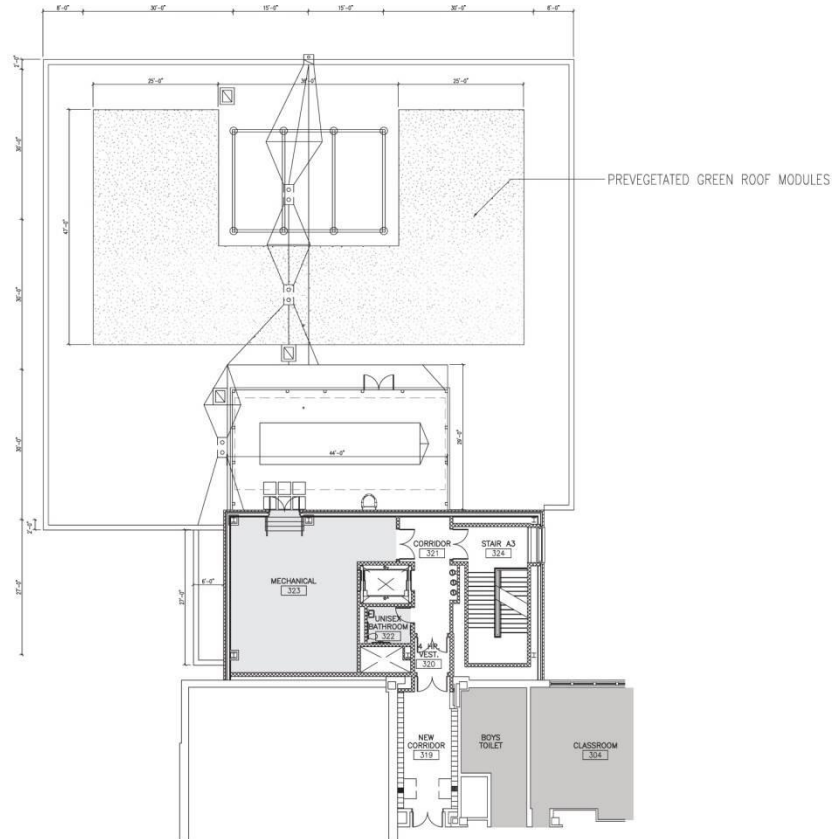
Second Floor Plan - William J. Onahan Elementary



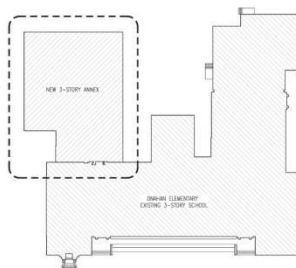
CORE ACADEMIC  
 BUILDING SERVICES

# PUBLIC BUILDING COMMISSION OF CHICAGO

## WILLIAM J. ONAHAN ELEMENTARY SCHOOL LINKED ANNEX



Third Floor Plan - William J. Onahan Elementary



 GREEN ROOF  
 BUILDING SERVICES





# PUBLIC BUILDING COMMISSION OF CHICAGO

## WILLIAM J. ONAHAN ELEMENTARY SCHOOL LINKED ANNEX

---

### PROJECT DEVELOPMENT SCHEDULE:

MAY-JULY 2010	LINKED ANNEX PROTOTYPE DEVELOPMENT
FEBRUARY 2011	CPS APPROVAL TO UNDERTAKE PROJECT
AUGUST 2011	DESIGN DEVELOPMENT DOCUMENTS ISSUED
DECEMBER 2011	BID DOCUMENTS ISSUED
SUMMER-FALL 2012	CONSTRUCTION BY PBC & FURNITURE, FIXTURES & EQUIPMENT BY CPS
JANUARY 2013	FACILITY OPENING



# PUBLIC BUILDING COMMISSION OF CHICAGO

## WILLIAM J. ONAHAN ELEMENTARY SCHOOL LINKED ANNEX

## Commitment to Sustainable Development for the Environment

- Diversion of construction waste from landfills
- Utilization of durable and recycled materials in construction
- Reflective and green roofs
- Light sensors and daylight harvesting
- Solar-powered features
- High efficiency heating and cooling systems
- Low flow/low consumption water usage
- Native and adaptive landscape species
- Aggressive stormwater management



# PUBLIC BUILDING COMMISSION OF CHICAGO

## WILLIAM J. ONAHAN ELEMENTARY SCHOOL LINKED ANNEX

# Commitment to Economic Sustainability Programs for the Community

- Programs Include:
  - Bid incentives for the employment of apprentices
  - Bid incentives for the employment of minority and female workers
  - Contract provisions that require at least 50% of the labor force be residents of the City of Chicago
  - Contract provisions with regard for community hiring, helping to employ those closest to the work at hand
  - Contract provisions that require minority- and women-owned business participation
  - Contract provisions for local business participation



# PUBLIC BUILDING COMMISSION OF CHICAGO

## WILLIAM J. ONAHAN ELEMENTARY SCHOOL LINKED ANNEX



# QUESTION & ANSWER