



# PUBLIC BUILDING COMMISSION OF CHICAGO

ADLAI E. STEVENSON ELEMENTARY SCHOOL LINKED ANNEX





# PUBLIC BUILDING COMMISSION OF CHICAGO

ADLAI E. STEVENSON ELEMENTARY SCHOOL LINKED ANNEX

---

WELCOME

KATHERINE KONOPASEK,  
*PRINCIPAL,*

*ADLAI E. STEVENSON ELEMENTARY SCHOOL*



# PUBLIC BUILDING COMMISSION OF CHICAGO

ADLAI E. STEVENSON ELEMENTARY SCHOOL LINKED ANNEX

---

REMARKS

MARTY QUINN,  
*13<sup>TH</sup> WARD ALDERMAN, CITY OF CHICAGO*



# PUBLIC BUILDING COMMISSION OF CHICAGO

## ADLAI E. STEVENSON ELEMENTARY SCHOOL LINKED ANNEX

---

## AGENDA

### WELCOME

KATHERINE KONOPASEK, *PRINCIPAL,*  
ADLAI E. STEVENSON ELEMENTARY SCHOOL

### REMARKS

MARTY QUINN, *13<sup>TH</sup> WARD ALDERMAN, CITY OF CHICAGO*

### INTRODUCTIONS

JOSE ALVAREZ, *SCHOOL RELATIONS, CPS*

### BUILDING DESIGN

ERIN LAVIN CABONARGI, *EXECUTIVE DIRECTOR, PBC*

### QUESTION AND ANSWER

JOSE ALVAREZ, *SCHOOL RELATIONS, CPS*



# PUBLIC BUILDING COMMISSION OF CHICAGO

ADLAI E. STEVENSON ELEMENTARY SCHOOL LINKED ANNEX

---

## PBC PRESENTATION ON BUILDING DESIGN

ERIN LAVIN CABONARGI,  
*EXECUTIVE DIRECTOR, PBC*

# PUBLIC BUILDING COMMISSION OF CHICAGO

## ADLAI E. STEVENSON ELEMENTARY SCHOOL LINKED ANNEX

Stevenson Elementary School: 8010 S. Kostner



- Proposed Site 
- TIF District 
- Ward Boundary 



# PUBLIC BUILDING COMMISSION OF CHICAGO

ADLAI E. STEVENSON ELEMENTARY SCHOOL LINKED ANNEX





# PUBLIC BUILDING COMMISSION OF CHICAGO

ADLAI E. STEVENSON ELEMENTARY SCHOOL LINKED ANNEX







# PUBLIC BUILDING COMMISSION OF CHICAGO

ADLAI E. STEVENSON ELEMENTARY SCHOOL LINKED ANNEX





# PUBLIC BUILDING COMMISSION OF CHICAGO

ADLAI E. STEVENSON ELEMENTARY SCHOOL LINKED ANNEX





# PUBLIC BUILDING COMMISSION OF CHICAGO

## ADLAI E. STEVENSON ELEMENTARY SCHOOL LINKED ANNEX



©2004 James Steinkamp: Steinkamp/Ballogg Photography



©2004 James Steinkamp: Steinkamp/Ballogg Photography



# PUBLIC BUILDING COMMISSION OF CHICAGO

ADLAI E. STEVENSON ELEMENTARY SCHOOL LINKED ANNEX

## PROJECT PROGRAM:

### Existing Building:

- 62,062 SF
- 33 Classrooms
- Library
- Gymnasium
- Administrative Suite

### New Annex & Renovations:

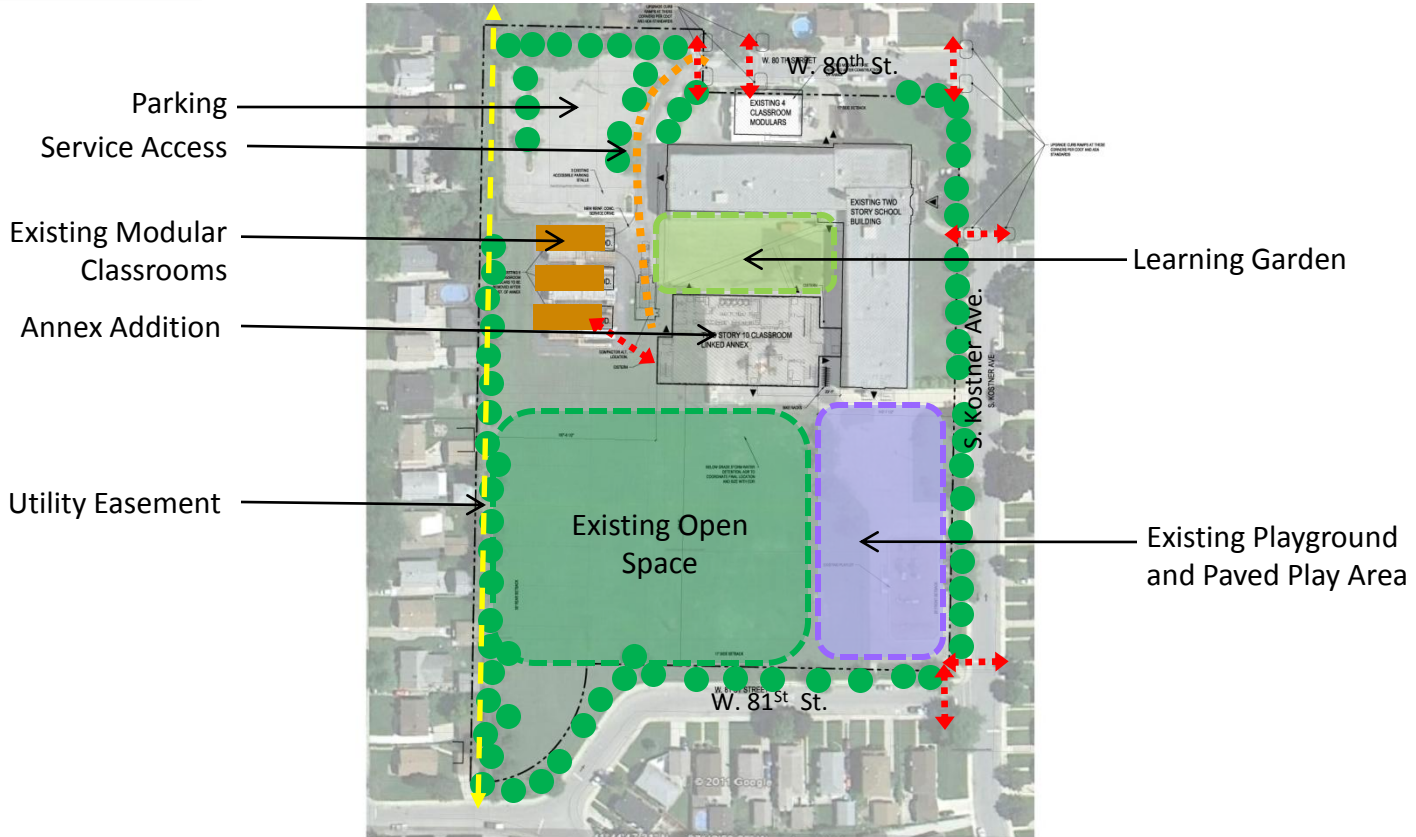
- 31,728 SF
- 9 Classrooms
- 1 Computer Lab
- Kitchen & Dining Facility
- Linked Connection to Existing Building
- Renovation of existing kitchen into multipurpose space
- Renovation of the existing library

### Green Roof:

- Partial Green & Reflective Roof

# PUBLIC BUILDING COMMISSION OF CHICAGO

## ADLAI E. STEVENSON ELEMENTARY SCHOOL LINKED ANNEX



Site Plan

# PUBLIC BUILDING COMMISSION OF CHICAGO

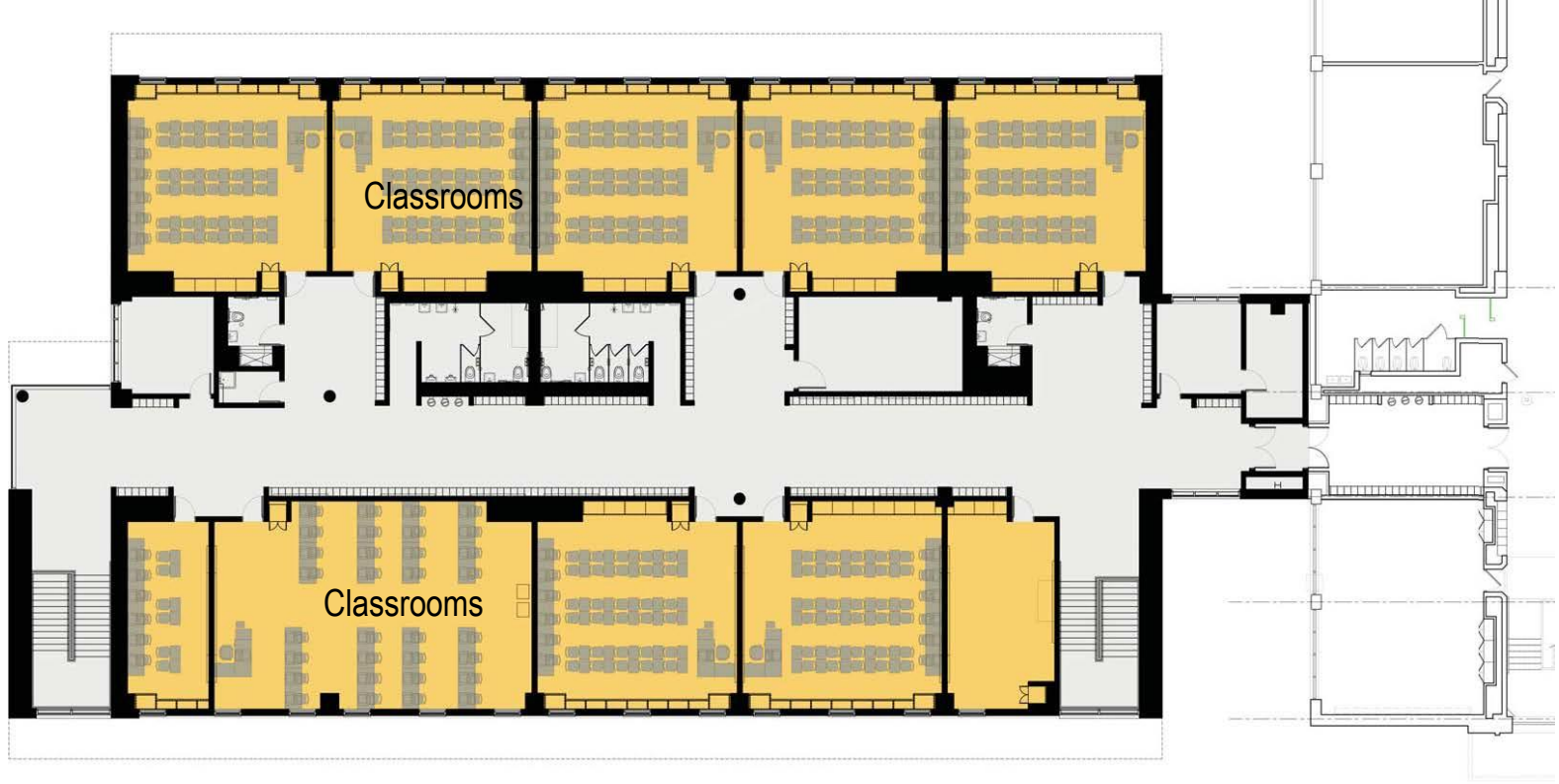
## ADLAI E. STEVENSON ELEMENTARY SCHOOL LINKED ANNEX



First Floor Plan

# PUBLIC BUILDING COMMISSION OF CHICAGO

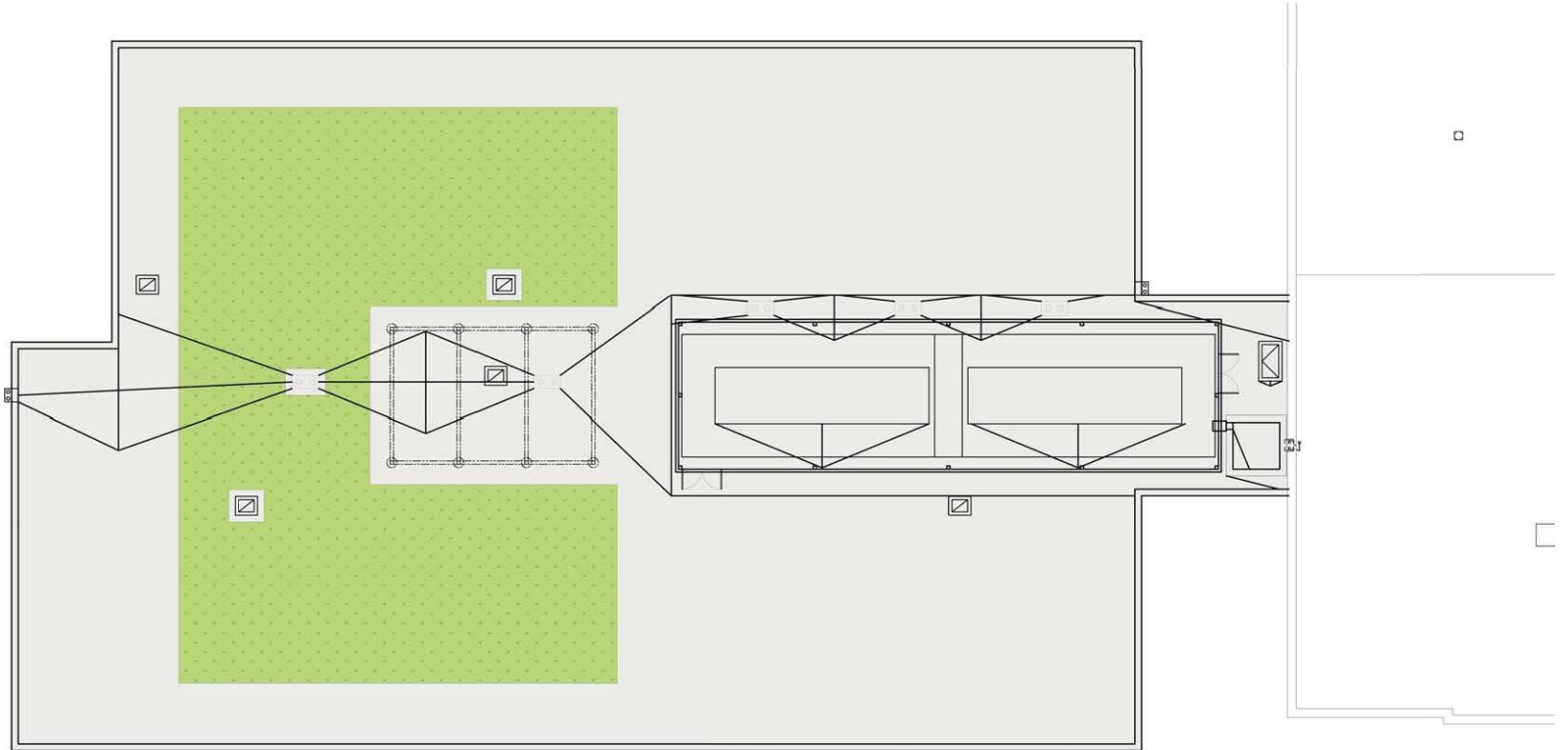
## ADLAI E. STEVENSON ELEMENTARY SCHOOL LINKED ANNEX



Second Floor Plan

# PUBLIC BUILDING COMMISSION OF CHICAGO

## ADLAI E. STEVENSON ELEMENTARY SCHOOL LINKED ANNEX



Roof Plan





# PUBLIC BUILDING COMMISSION OF CHICAGO

## ADLAI E. STEVENSON ELEMENTARY SCHOOL LINKED ANNEX

---

### PROJECT DEVELOPMENT SCHEDULE:

MAY-JULY 2010	LINKED ANNEX PROTOTYPE DEVELOPMENT
FEBRUARY 2011	CPS APPROVAL TO UNDERTAKE PROJECT
AUGUST 2011	DESIGN DEVELOPMENT DOCUMENTS ISSUED
DECEMBER 2011	BID DOCUMENTS ISSUED
SUMMER-FALL 2012	CONSTRUCTION BY PBC & FURNITURE, FIXTURES & EQUIPMENT BY CPS
JANUARY 2013	FACILITY OPENING



# PUBLIC BUILDING COMMISSION OF CHICAGO

## ADLAI E. STEVENSON ELEMENTARY SCHOOL LINKED ANNEX

## Commitment to Sustainable Development for the Environment

- Diversion of construction waste from landfills
- Utilization of durable and recycled materials in construction
- Reflective and green roofs
- Light sensors and daylight harvesting
- Solar-powered features
- High efficiency heating and cooling systems
- Low flow/low consumption water usage
- Native and adaptive landscape species
- Aggressive stormwater management



# PUBLIC BUILDING COMMISSION OF CHICAGO

## ADLAI E. STEVENSON ELEMENTARY SCHOOL LINKED ANNEX

# Commitment to Economic Sustainability Programs for the Community

- Programs Include:
  - Bid incentives for the employment of apprentices
  - Bid incentives for the employment of minority and female workers
  - Contract provisions that require at least 50% of the labor force be residents of the City of Chicago
  - Contract provisions with regard for community hiring, helping to employ those closest to the work at hand
  - Contract provisions that require minority- and women-owned business participation
  - Contract provisions for local business participation



# PUBLIC BUILDING COMMISSION OF CHICAGO

ADLAI E. STEVENSON ELEMENTARY SCHOOL LINKED ANNEX



## QUESTION & ANSWER