



Chicago
Public
Library



PUBLIC BUILDING COMMISSION OF CHICAGO

Edgewater Branch Library





Chicago
Public
Library



PUBLIC BUILDING COMMISSION OF CHICAGO
Edgewater Branch Library

PBC PRESENTATION ON BUILDING DESIGN

ERIN LAVIN CABONARGI
EXECUTIVE DIRECTOR, PBC



Chicago
Public
Library




PUBLIC BUILDING COMMISSION OF CHICAGO

Edgewater Branch Library

Edgewater Replacement Library - 1210 W. Elmdale



Proposed Site 

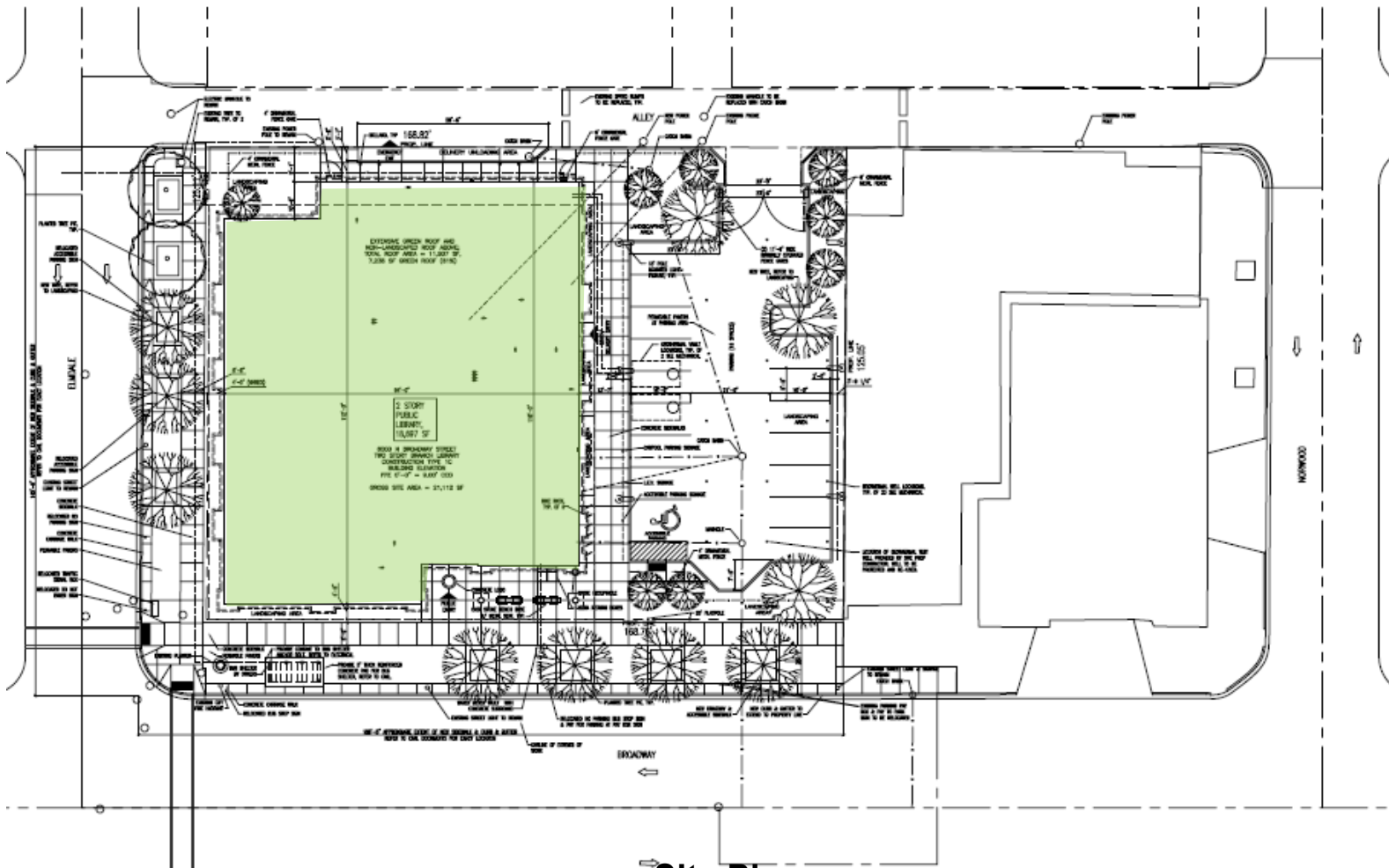


Chicago
Public
Library



PUBLIC BUILDING COMMISSION OF CHICAGO

Edgewater Branch Library



Site Plan



Chicago
Public
Library



PUBLIC BUILDING COMMISSION OF CHICAGO

Edgewater Branch Library

BUILDING FEATURES

- 16,300 Square Feet
- Two story steel framed building with bearing and nonbearing masonry cavity.
Exterior faced with a brick and cast stone veneer
- On-site parking (one for handicapped patrons)
- Low maintenance and irrigated native and adaptive plant species throughout landscaping
- A variable heating and cooling system
- High-efficiency boilers/geothermal system
- Combination of recycled rubber and terrazzo floor coverings
- Physically accessible throughout for wheel chair patrons
- Seating Capacity –267
- Book Capacity – 50,000 volumes
- Multipurpose Room – Seating capacity: 68 patrons
- Underfloor Technology System – For extensive use of electronic technology
- 62 Computers (Internet access, online and computer reference databases)



Chicago
Public
Library



PUBLIC BUILDING COMMISSION OF CHICAGO

Edgewater Branch Library





Chicago
Public
Library



PUBLIC BUILDING COMMISSION OF CHICAGO

Edgewater Branch Library





Chicago
Public
Library



PUBLIC BUILDING COMMISSION OF CHICAGO

Edgewater Branch Library





PUBLIC BUILDING COMMISSION OF CHICAGO

Edgewater Branch Library





Chicago
Public
Library



PUBLIC BUILDING COMMISSION OF CHICAGO

Edgewater Branch Library





Chicago
Public
Library



PUBLIC BUILDING COMMISSION OF CHICAGO

Edgewater Branch Library





Chicago
Public
Library



PUBLIC BUILDING COMMISSION OF CHICAGO

Edgewater Branch Library

PROJECT DEVELOPMENT SCHEDULE:

DECEMBER 2011	ISSUE FOR BID
MARCH 21, 2012	BUILDING PERMIT ISSUED
MARCH 23, 2012	EMPLOYMENT INTAKE SESSION (9:00 A.M.-12:00 NOON)
APRIL 2012	VERTICAL BUILDING CONSTRUCTION START
JUNE 2013	NEW LIBRARY OPENS (TENTATIVE)



Chicago
Public
Library



PUBLIC BUILDING COMMISSION OF CHICAGO

Edgewater Branch Library

Environmental Sustainability

- Diversion of construction waste from landfills
- Utilization of durable and recycled materials in construction
- Reflective and green roofs
- Light sensors and daylight harvesting
- Solar-powered features
- High efficiency heating and cooling systems
- Low flow/low consumption water usage
- Native and adaptive landscape species
- Aggressive stormwater management



Chicago
Public
Library



PUBLIC BUILDING COMMISSION OF CHICAGO

Edgewater Branch Library

Economic Sustainability

- Programs Include:
 - Bid incentives for the employment of apprentices
 - Bid incentives for the employment of minority and female workers
 - Contract provisions that require at least 50% of the labor force be residents of the City of Chicago
 - Contract provisions with regard for community hiring, helping to employ those closest to the work at hand
 - Contract provisions that require minority- and women-owned business participation
 - Contract provisions for local business participation



Chicago
Public
Library



PUBLIC BUILDING COMMISSION OF CHICAGO

Edgewater Branch Library

QUESTION & ANSWER