



Chicago
Public
Library



PUBLIC BUILDING COMMISSION OF CHICAGO

Albany Park Branch Library





Chicago
Public
Library



PUBLIC BUILDING COMMISSION OF CHICAGO
Albany Park Branch Library

AGENDA

WELCOME AND INTRODUCTION

Alderman Margaret Laurino

CPL PRESENTATION ON NEW LIBRARY SERVICES

Commissioner Brian Bannon, CPL

PBC PRESENTATION ON NEW LIBRARY DEVELOPMENT

Erin Lavin Cabonargi, PBC



Chicago
Public
Library



PUBLIC BUILDING COMMISSION OF CHICAGO

Albany Park Branch Library

WELCOME AND INTRODUCTION

ALDERMAN MARGARET LAURINO
39TH WARD, CITY OF CHICAGO



Chicago
Public
Library



PUBLIC BUILDING COMMISSION OF CHICAGO

Albany Park Branch Library

CPL PRESENTATION ON INTERIM & NEW LIBRARY SERVICES

BRIAN BANNON
COMMISSIONER, CHICAGO PUBLIC LIBRARY



Chicago
Public
Library



PUBLIC BUILDING COMMISSION OF CHICAGO

Albany Park Branch Library

LIBRARY SERVICES

- Teen space with technology workshops
- Financial Literacy Programs for adults and teens
- Science, technology, engineering & math (STEM) programs for middle school students and teens
- Ethnic Heritage Programs
- Early Literacy Programs for babies & toddlers
- Summer Reading Program activities, story times, thematic programs, craft & holiday celebrations
- Teacher in the Library after school homework help
- CyberNavigator computer literacy assistance
- Adult programs: book discussions, literary events, cultural programs of community interest
- Extensive Korean Collection



Chicago
Public
Library



PUBLIC BUILDING COMMISSION OF CHICAGO

Albany Park Branch Library

LIBRARY SERVICES DURING ALBANY PARK CLOSURE

- Full services at nearby Chicago Public Library branch libraries
(four within approximately 2 miles of current location, and including:
internet access, wi-fi, and a Teacher –in-the-Library for homework help)
- Programming for adults, teens and children at nearby branches and community centers
- Holds pickup at nearby branches and the Bookmobile services starting Spring 2013
- Public Access to Northeastern Illinois University Library
- Albany Park's Teacher-in-the-Library at a nearby community site
- Korean language collections at Budlong Woods, Sulzer, and HWLC



Chicago
Public
Library



PUBLIC BUILDING COMMISSION OF CHICAGO

Albany Park Branch Library





Chicago
Public
Library



PUBLIC BUILDING COMMISSION OF CHICAGO

Albany Park Branch Library

PBC PRESENTATION ON NEW LIBRARY DEVELOPMENT

ERIN LAVIN CABONARGI
EXECUTIVE DIRECTOR, PBC



Chicago
Public
Library

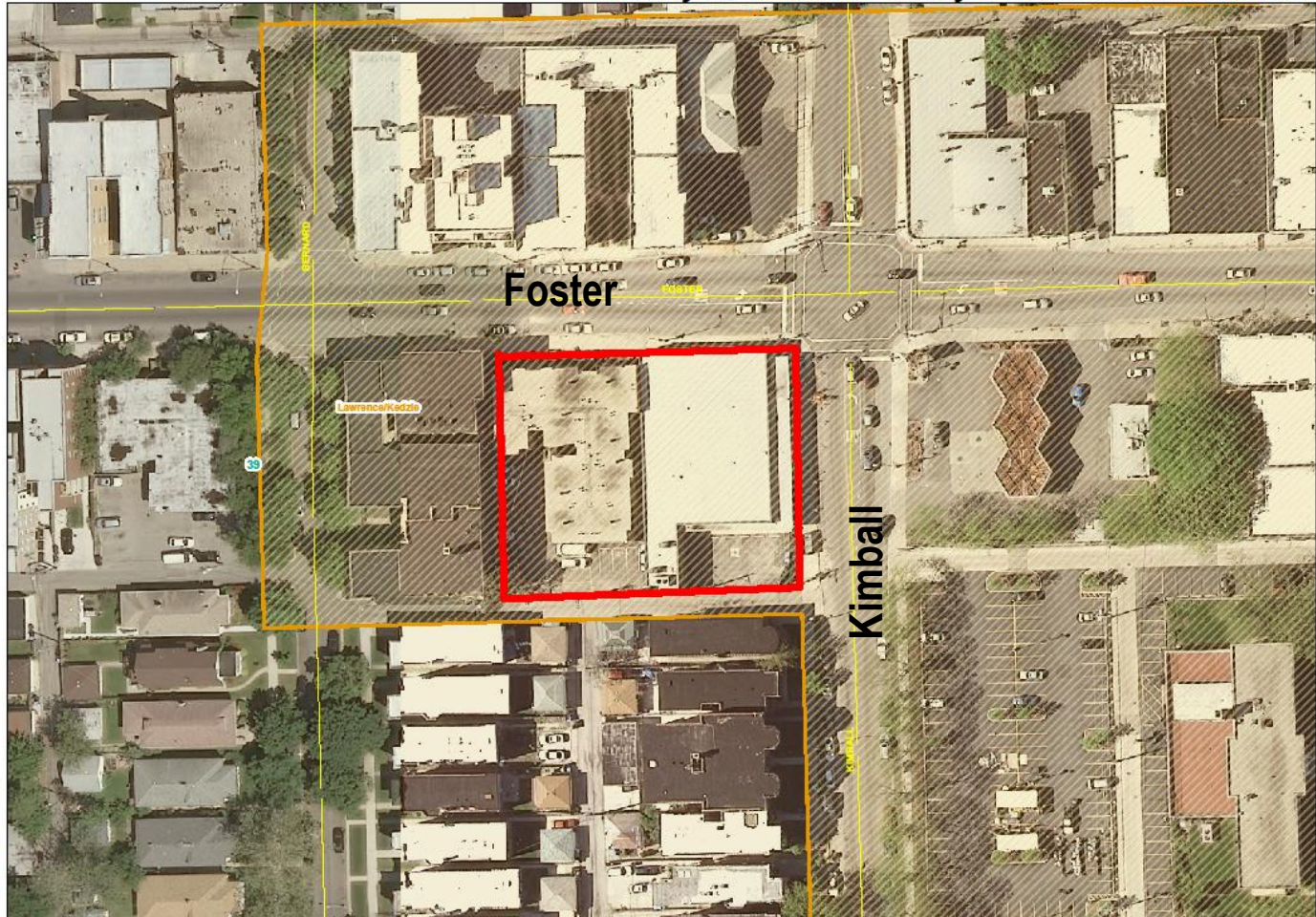


PUBLIC BUILDING COMMISSION OF CHICAGO

Albany Park Branch Library



Albany Park Branch Library - SWC Foster and Kimball



Project Site



TIF District



Ward





Chicago
Public
Library



PUBLIC BUILDING COMMISSION OF CHICAGO

Albany Park Branch Library

NEW BUILDING FEATURES

- 16,300 Square Feet
- On-site parking for 16 vehicles (one for handicapped patrons)
- Attractive landscaping with a generous Reading Garden planned on the west side of the new library
- High-efficiency boilers/geothermal system
- Physically accessible throughout for wheel chair patrons
- Reading Room Seating Capacity – 144
- New opening day collection and increased capacity
- Multipurpose Room – Seating capacity:125 patrons
- 38 Public Computers
- Laptop computer connections at study tables
- Wireless connection inside and outside
- Small Group Work Rooms
- Dedicated Teen Area



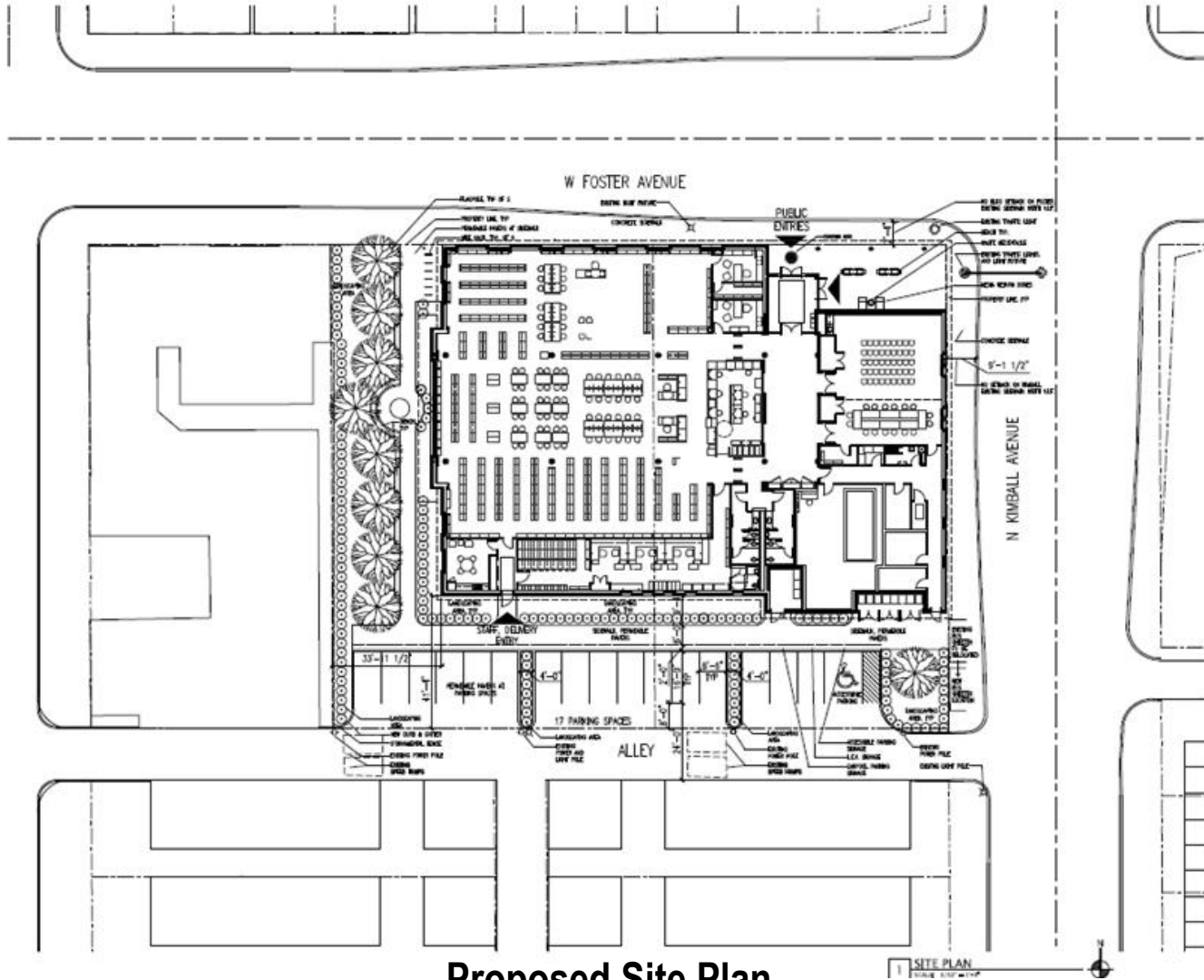


Chicago
Public
Library



PUBLIC BUILDING COMMISSION OF CHICAGO

Albany Park Branch Library



Proposed Site Plan

1 SITE PLAN
SCALE 1/8" = 1'-0"



Chicago
Public
Library



PUBLIC BUILDING COMMISSION OF CHICAGO

Albany Park Branch Library



Floor Plan of Prototype as Previously Proposed

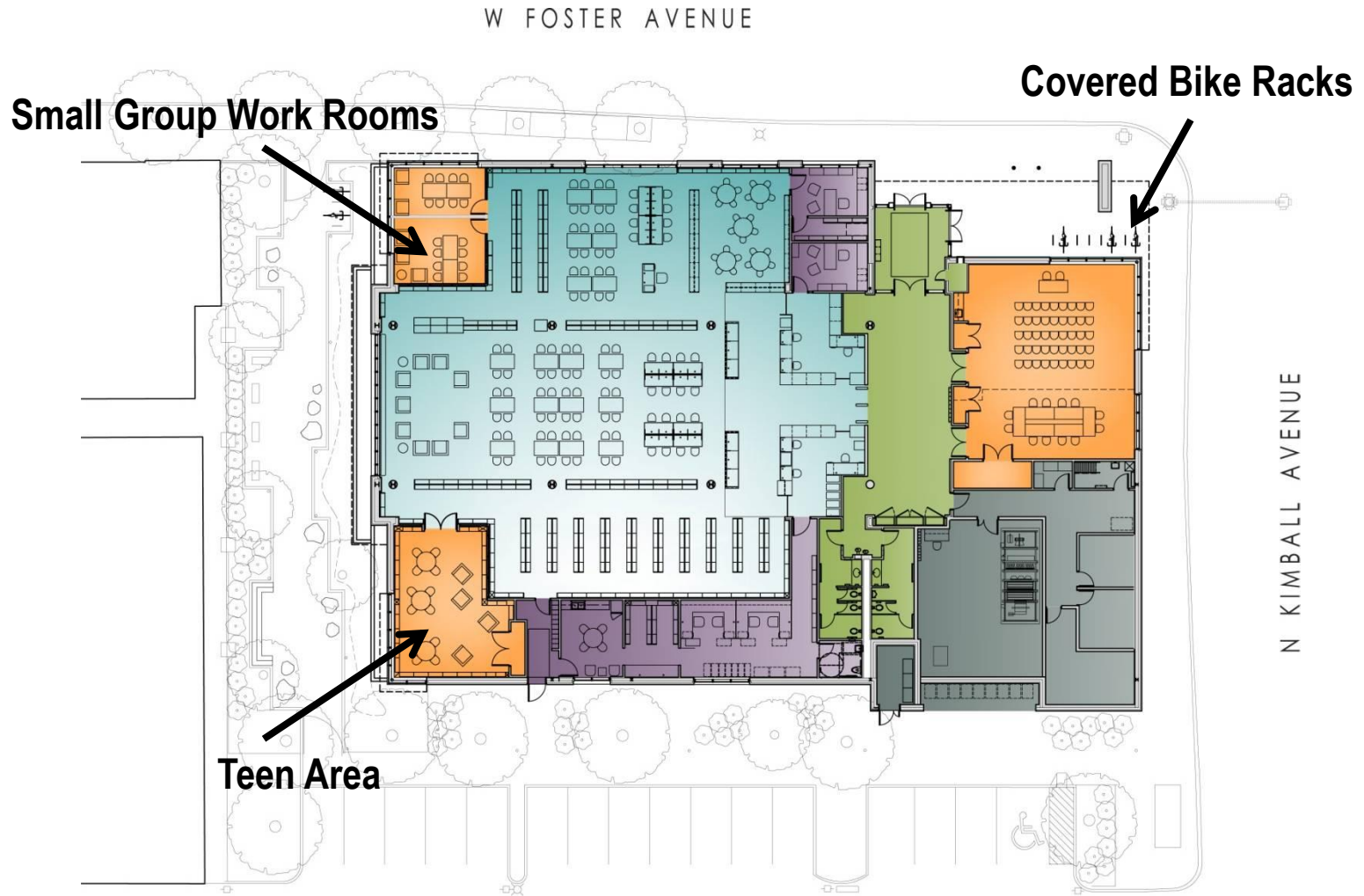


Chicago
Public
Library



PUBLIC BUILDING COMMISSION OF CHICAGO

Albany Park Branch Library



ALLEY
Floor Plan Incorporating Proposed Revisions



Chicago
Public
Library



PUBLIC BUILDING COMMISSION OF CHICAGO

Albany Park Branch Library



Recent Construction-Little Village Branch Library



Chicago
Public
Library



PUBLIC BUILDING COMMISSION OF CHICAGO

Albany Park Branch Library



Vestibule-Greater Grand Crossing Branch Library



Chicago
Public
Library



PUBLIC BUILDING COMMISSION OF CHICAGO

Albany Park Branch Library



Reading Room-Richard M. Daley Branch Library



Chicago
Public
Library



PUBLIC BUILDING COMMISSION OF CHICAGO

Albany Park Branch Library

PROJECT DEVELOPMENT SCHEDULE:

9/1/12	Existing Library Closes
Fall 2012	Abatement, Demolition & Site Preparation
Spring 2013	New Library Construction Starts
Summer 2014	New Library Opens



Chicago
Public
Library



PUBLIC BUILDING COMMISSION OF CHICAGO

Albany Park Branch Library

QUESTION & ANSWER