



Chicago
Public
Library



PUBLIC BUILDING COMMISSION OF CHICAGO

Chinatown Branch Library





Chicago
Public
Library



PUBLIC BUILDING COMMISSION OF CHICAGO
Chinatown Branch Library

Agenda

Welcome & Introduction

Si Chen, CPL Chinatown Branch Manager

Alderman Daniel Solis

CPL Presentation on New Library Services

Commissioner Brian Bannon, CPL

PBC Presentation on New Library Development

Terri Haymaker, Director of Planning, PBC

Brian Lee, Partner, Skidmore, Owings & Merrill LLP

Art Del Muro, AIA, LEED, AP, Managing Architect, PBC



Chicago
Public
Library



PUBLIC BUILDING COMMISSION OF CHICAGO

Chinatown Branch Library

Welcome & Introduction

Alderman Daniel Solis
25th Ward, City of Chicago



Chicago
Public
Library



PUBLIC BUILDING COMMISSION OF CHICAGO

Chinatown Branch Library

CPL Presentation on New Library Services

Brian Bannon, Commissioner
Chicago Public Library



Chicago
Public
Library



PUBLIC BUILDING COMMISSION OF CHICAGO
Chinatown Branch Library

Library Services

- Chinese Heritage & Chinese Language Collections
- Teacher in the Library – CPLF
- CyberNavigator – CPLF
- Rahm's Readers – Summer Learning Challenge
- 12th YOUmedia space - **NEW**
- Full-time Teen Specialist Librarian- **NEW**
- Early Childhood Learning Space - **NEW**
- Larger reading room and community room – **Expanded**
- Study rooms for students or anyone needing a small meeting space- **NEW**
- More computers and increased state-of-the-art technology – **Expanded**



Chicago
Public
Library



PUBLIC BUILDING COMMISSION OF CHICAGO
Chinatown Branch Library

PBC Presentation on New Library Development

Terri Haymaker, Director of Planning, PBC
Brian Lee, Partner, Skidmore, Owings & Merrill LLP
Art Del Muro, AIA, LEED, AP, Managing Architect, PBC



Chicago
Public
Library



PUBLIC BUILDING COMMISSION OF CHICAGO
Chinatown Branch Library

Site Context

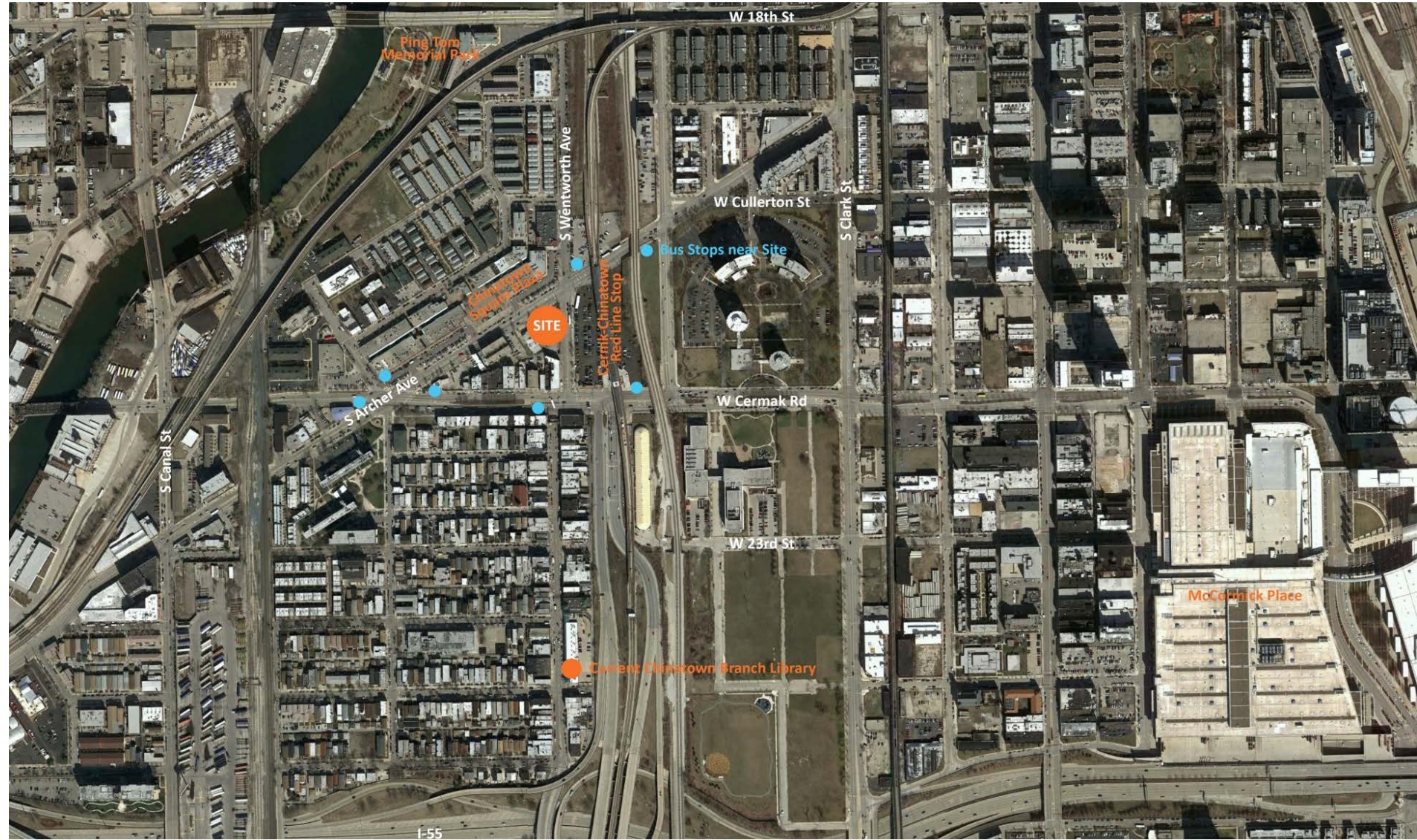


Chicago
Public
Library



PUBLIC BUILDING COMMISSION OF CHICAGO

Chinatown Branch Library



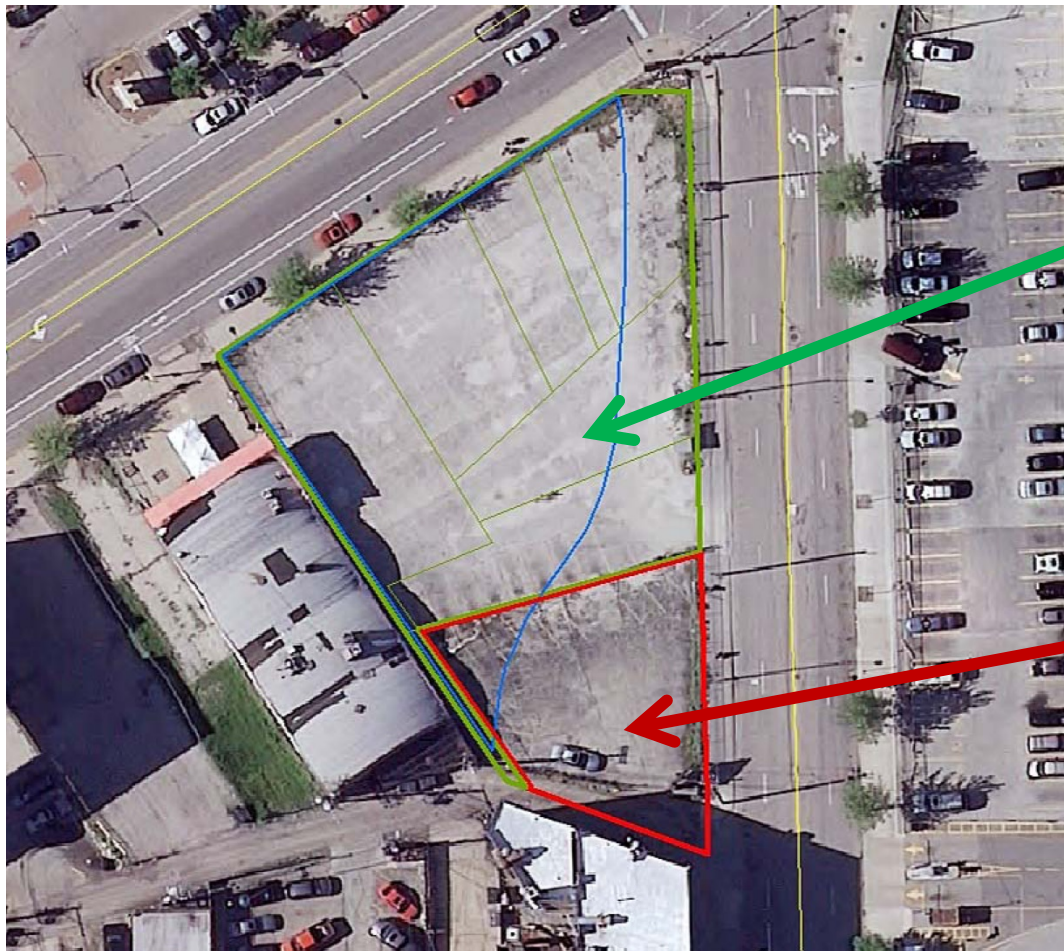


Chicago
Public
Library



PUBLIC BUILDING COMMISSION OF CHICAGO

Chinatown Branch Library



North Parcel

South Parcel



Chicago
Public
Library



PUBLIC BUILDING COMMISSION OF CHICAGO

Chinatown Branch Library





Chicago
Public
Library



PUBLIC BUILDING COMMISSION OF CHICAGO

Chinatown Branch Library




SITE PLAN with FUTURE ALIGNMENT

New Building Features

- Approximately 16,000 Square Feet
- Wi-Fi
- Low maintenance and irrigated native and adaptive plant species throughout landscaping
- Accessible throughout for people with disabilities
- Green Roof
- Durable Materials
- Natural Light and Views
- Indoor Air Quality
- Energy Efficient Building Systems
- Water use reduction measures
- Permeable pavers

Chinatown Branch Library
2100 S. Wentworth Avenue



Building Features

- Approximately 16,000 Square Feet
- Two story steel framed building
- Large reading room
- Hi-tech teen room
- Juvenile/children's reading room
- Flexible meeting spaces for community use
- State-of-the-art technology for public use
- Wi-Fi
- Low maintenance and irrigated native and adaptive plant species throughout landscaping
- Physically accessible throughout for people with disabilities

Project Development Information



- Design Builder: Wight & Company/SOM

Economic Sustainability Program

- City Residency Labor Requirement
- Community Hiring Requirement
- Local Business Requirement
- Bid Incentives for the employment of Women and Minorities
- Bid Incentives for the employment of Apprentices
- M/WBE Business Participation: 28% Minimum

Environmentally Sustainable Features

- Green Roof
- Durable Materials
- Natural Light and Views
- Indoor Air Quality
- Energy Efficient Building Systems
- Water Use Reduction Measures
- Native Planting & Permeable Pavers

Chicago Public Library  



Chicago
Public
Library



PUBLIC BUILDING COMMISSION OF CHICAGO
Chinatown Branch Library

Design



Chicago
Public
Library



PUBLIC BUILDING COMMISSION OF CHICAGO

Chinatown Branch Library

Skidmore, Owings & Merrill LLP

Brian Douglas Lee, FAIA

Partner



Chicago
Public
Library



PUBLIC BUILDING COMMISSION OF CHICAGO
Chinatown Branch Library

Feng Shui

Master Jonathan Ng

“Having good Feng Shui principles leads to prosperity, happiness and is beneficial to users. The aim is to make the facility a great place for people.”

旺 山 旺 水

*“Wan San, Wan Shui”
Flourish in every aspect*

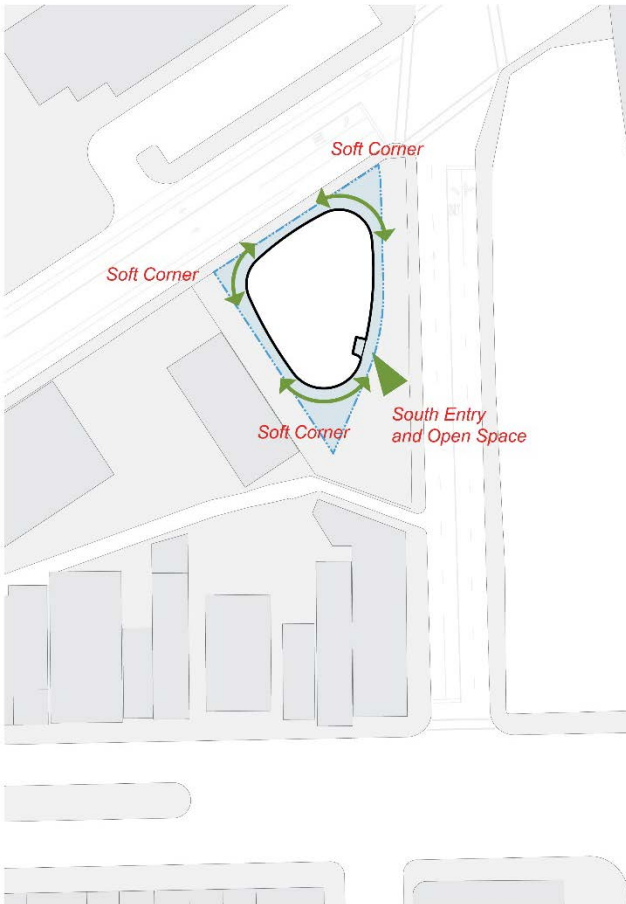


Chicago
Public
Library

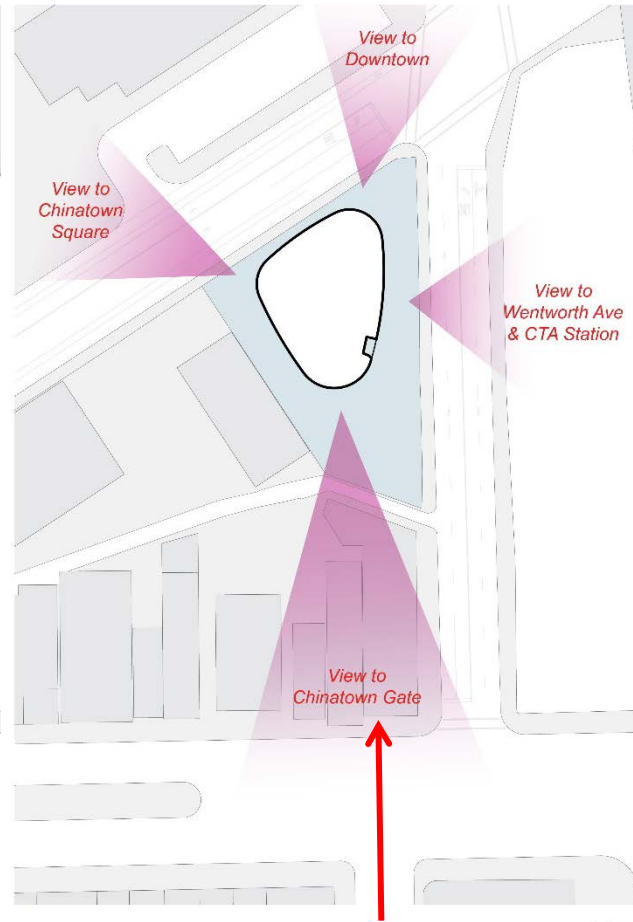


PUBLIC BUILDING COMMISSION OF CHICAGO

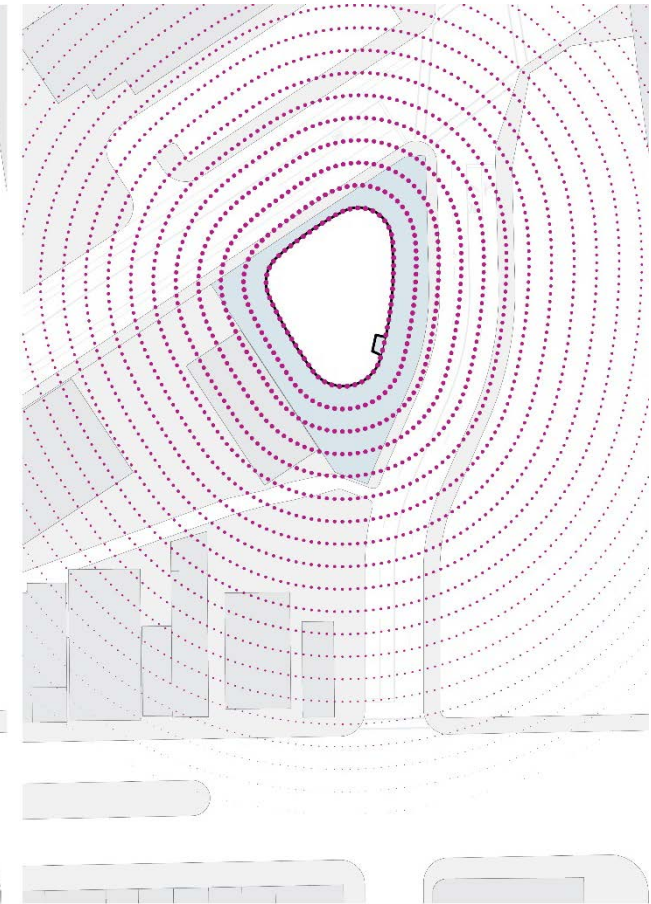
Chinatown Branch Library



Enhance the Site



Visual connections



A New Neighborhood Hub



Chicago
Public
Library



PUBLIC BUILDING COMMISSION OF CHICAGO

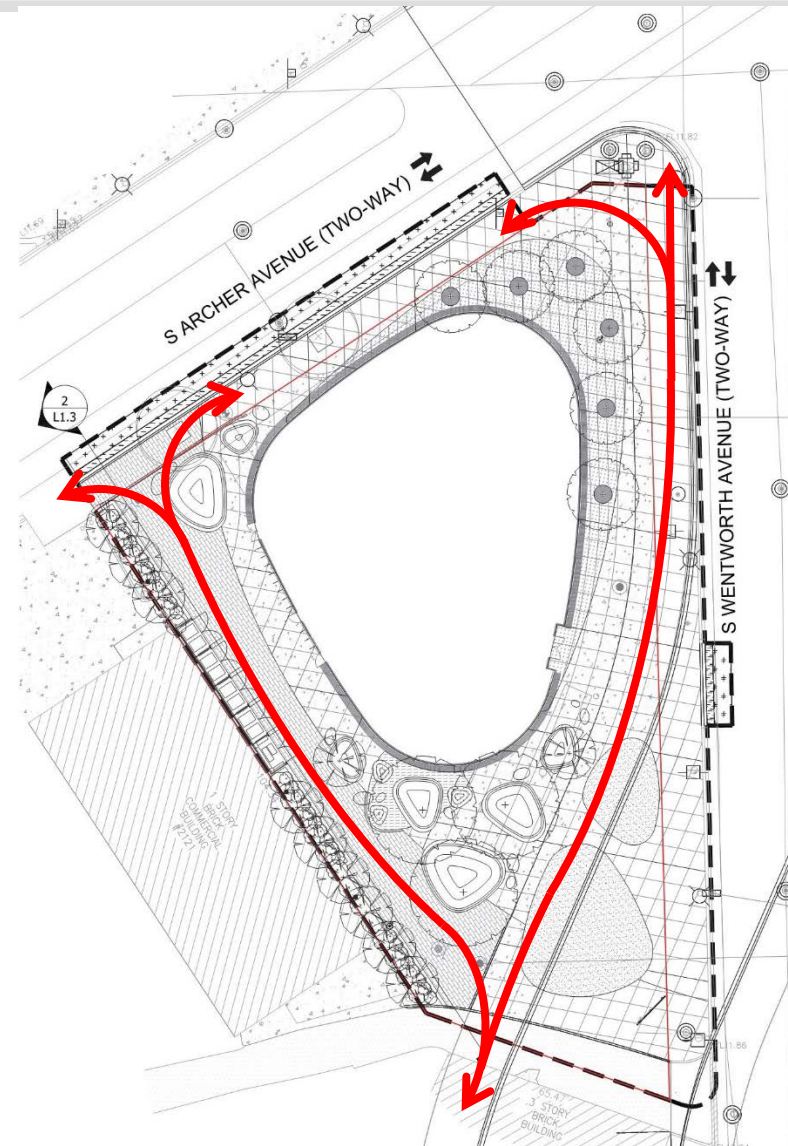
Chinatown Branch Library

Feng Shui

Rounded triangular plan is good for the site as it fits well with the street and corners. The plan is smart to anticipate the future road alignment.

The landscape treatment of the plan is healthy – it allows for a gracious flow of people and planting to be integrated around the entire building.

The plan creates a new center for the neighborhood and promotes a good flow of people from the south side to the north of the community.





Chicago Public Library



PUBLIC BUILDING COMMISSION OF CHICAGO

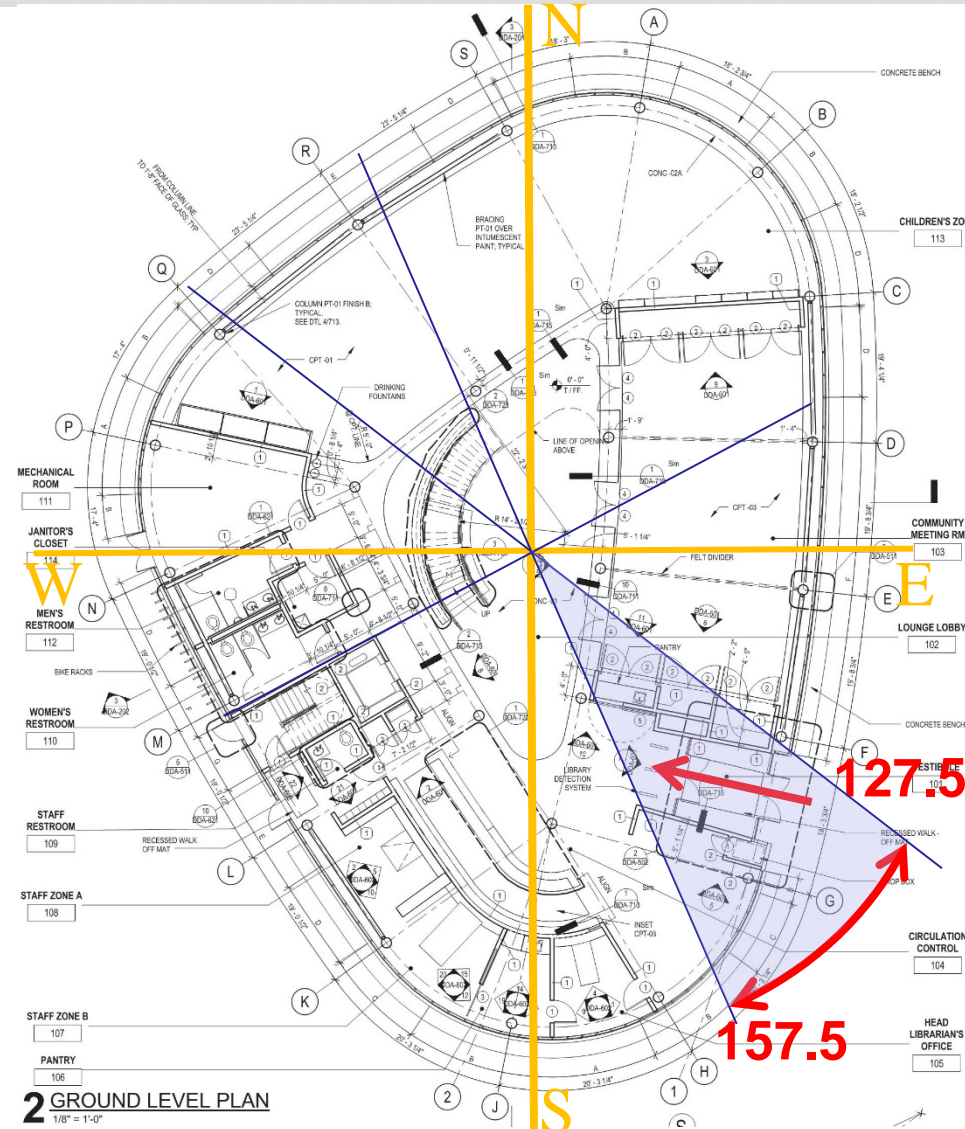
Chinatown Branch Library

Feng Shui

The entry is very important and should be at the southeast. Avoid due south because of new alignment.

Organize the entry in the segment between 127.5 and 157.5 degrees for the most favored orientation.

The Fu Dog statues at the existing Chinatown Library can be brought to the new facility to link the old and new histories of the library.





Chicago
Public
Library



PUBLIC BUILDING COMMISSION OF CHICAGO

Chinatown Branch Library





Chicago
Public
Library



PUBLIC BUILDING COMMISSION OF CHICAGO

Chinatown Branch Library

Ground Level Programs

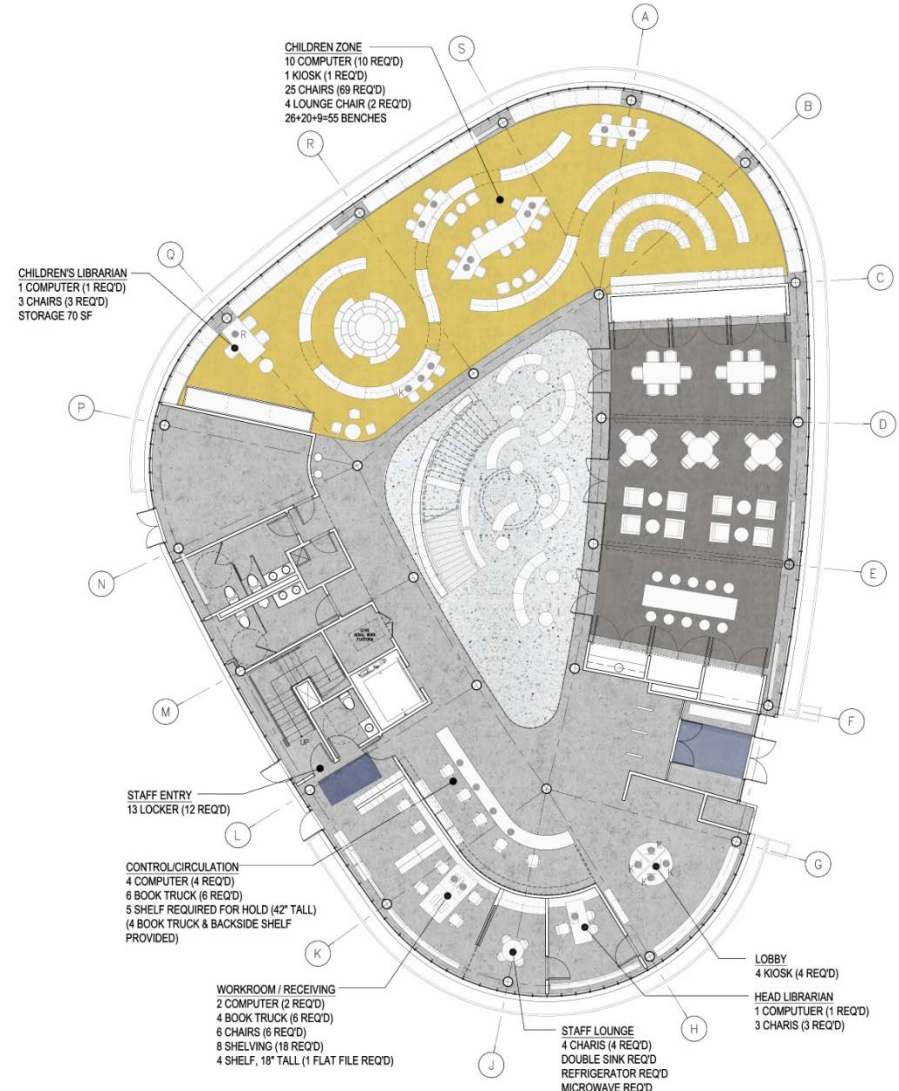
- Central lobby and exhibit space
- Flexible meeting spaces for community use
- Children Zone
- State-of-the-art technology for public use
- Circulation Desk, staff workroom, and Librarian
- Restrooms

Second Level Programs

- YOUMedia area
- Teen area
- Adult area
- Periodicals and Reference area
- State-of-the-art technology for public use
- Study and meeting rooms
- Restrooms

Ground Level Programs

- Central lobby and exhibit space
- Flexible meeting spaces for community use
- Children Zone
- State-of-the-art technology for public use
- Circulation Desk, staff workroom, and Librarian
- Restrooms





Chicago
Public
Library



PUBLIC BUILDING COMMISSION OF CHICAGO

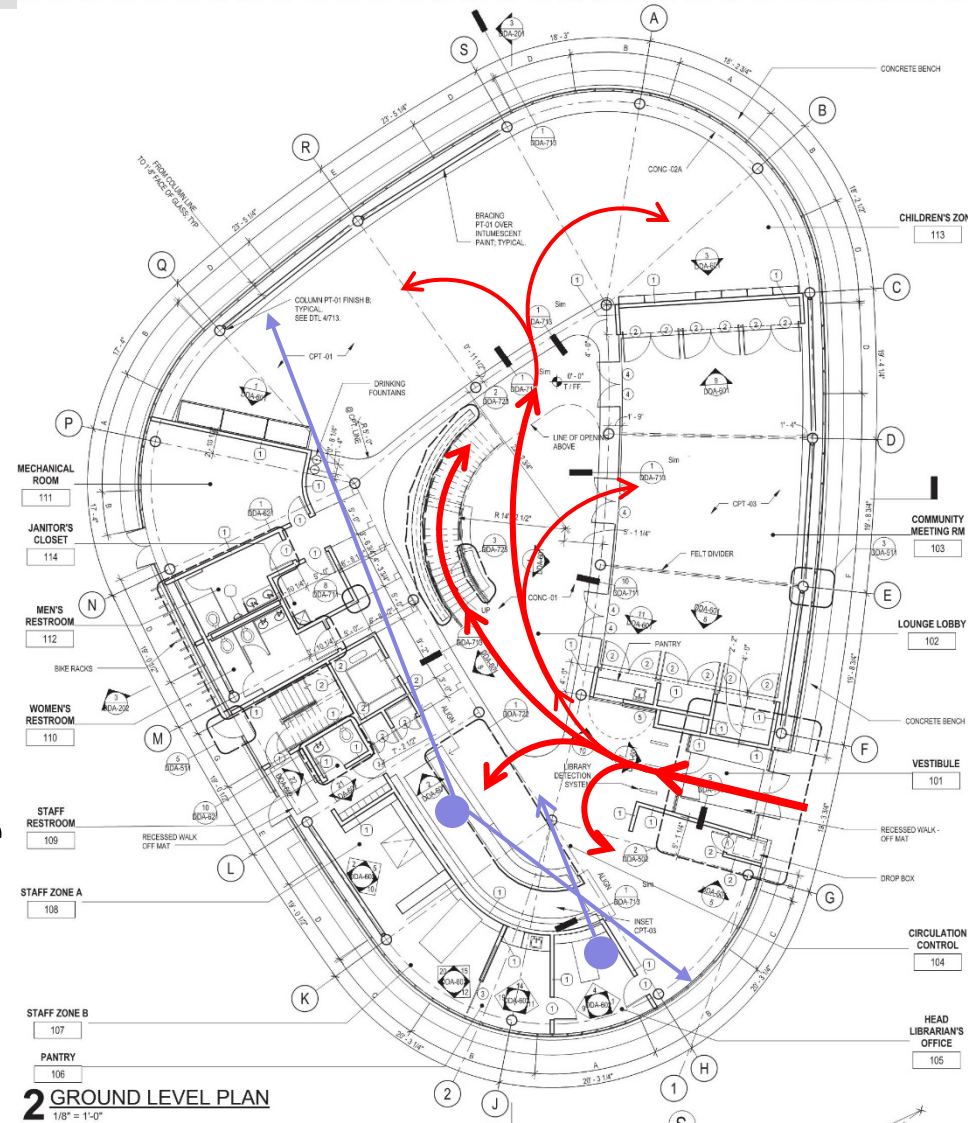
Chinatown Branch Library

Feng Shui

The central atrium is attractive – it is enlivened with natural light and has good spatial unity.

An open, flowing circulation system for people is equivalent to a good blood flow in the human body. Avoid abrupt, awkward paths especially to the stairs.

The lobby feels comfortable and spacious with a good connection to the reception area. The administrative and staff area has a good centralized “power” location with good views and access.



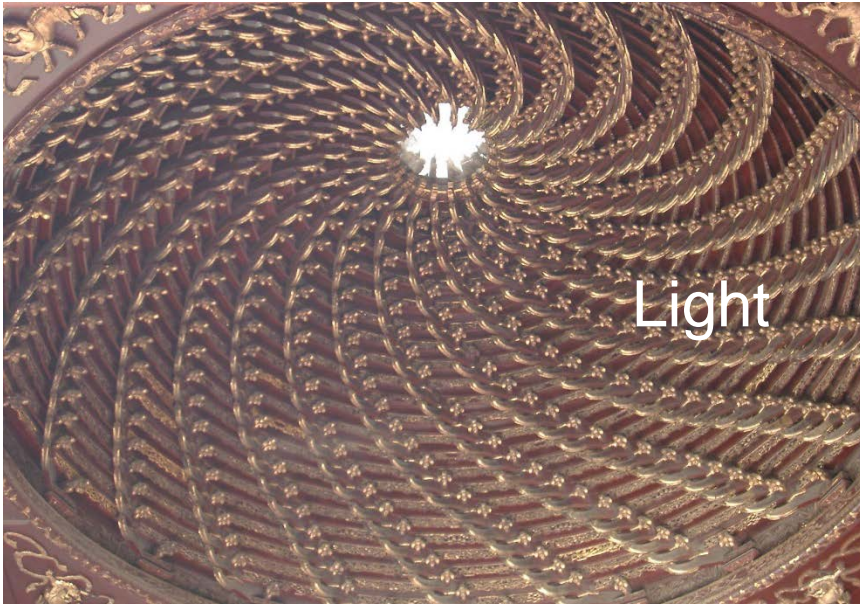


Chicago
Public
Library



PUBLIC BUILDING COMMISSION OF CHICAGO

Chinatown Branch Library



Light

HE XI TEMPLE



Space

PANTHEON



Chicago
Public
Library

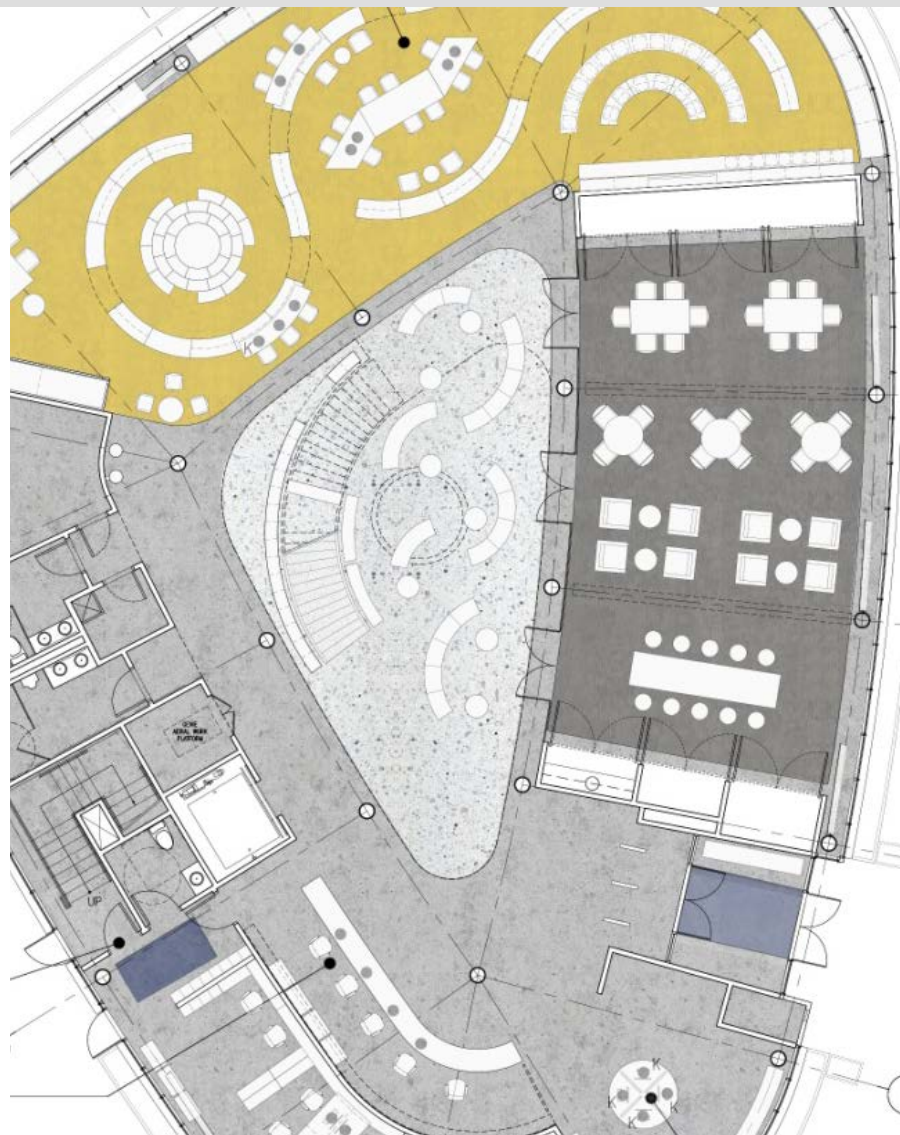


PUBLIC BUILDING COMMISSION OF CHICAGO

Chinatown Branch Library



LOUNGE / EXHIBITION AT LEVEL 1





Chicago
Public
Library



PUBLIC BUILDING COMMISSION OF CHICAGO

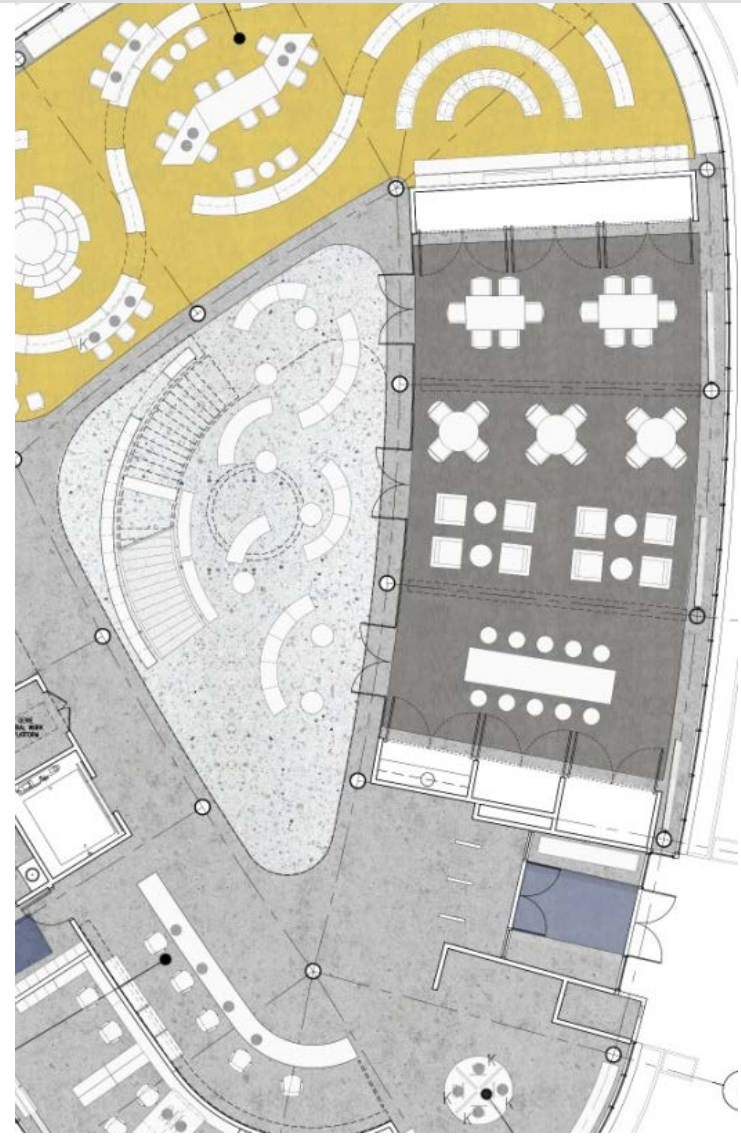
Chinatown Branch Library



**COMMUNITY ROOM AT LEVEL 1
(Divider Up)**



**COMMUNITY ROOM AT LEVEL 1
(Divider Down)**





Chicago
Public
Library



PUBLIC BUILDING COMMISSION OF CHICAGO

Chinatown Branch Library



LOBBY / CONTROL DESK AREA AT LEVEL 1



Chicago
Public
Library



PUBLIC BUILDING COMMISSION OF CHICAGO

Chinatown Branch Library



CHILDREN'S READING / PLAY AREA AT LEVEL 1



Chicago
Public
Library



PUBLIC BUILDING COMMISSION OF CHICAGO

Chinatown Branch Library



CHILDREN'S READING / STORY-TELLING AREA AT LEVEL 1



Chicago
Public
Library



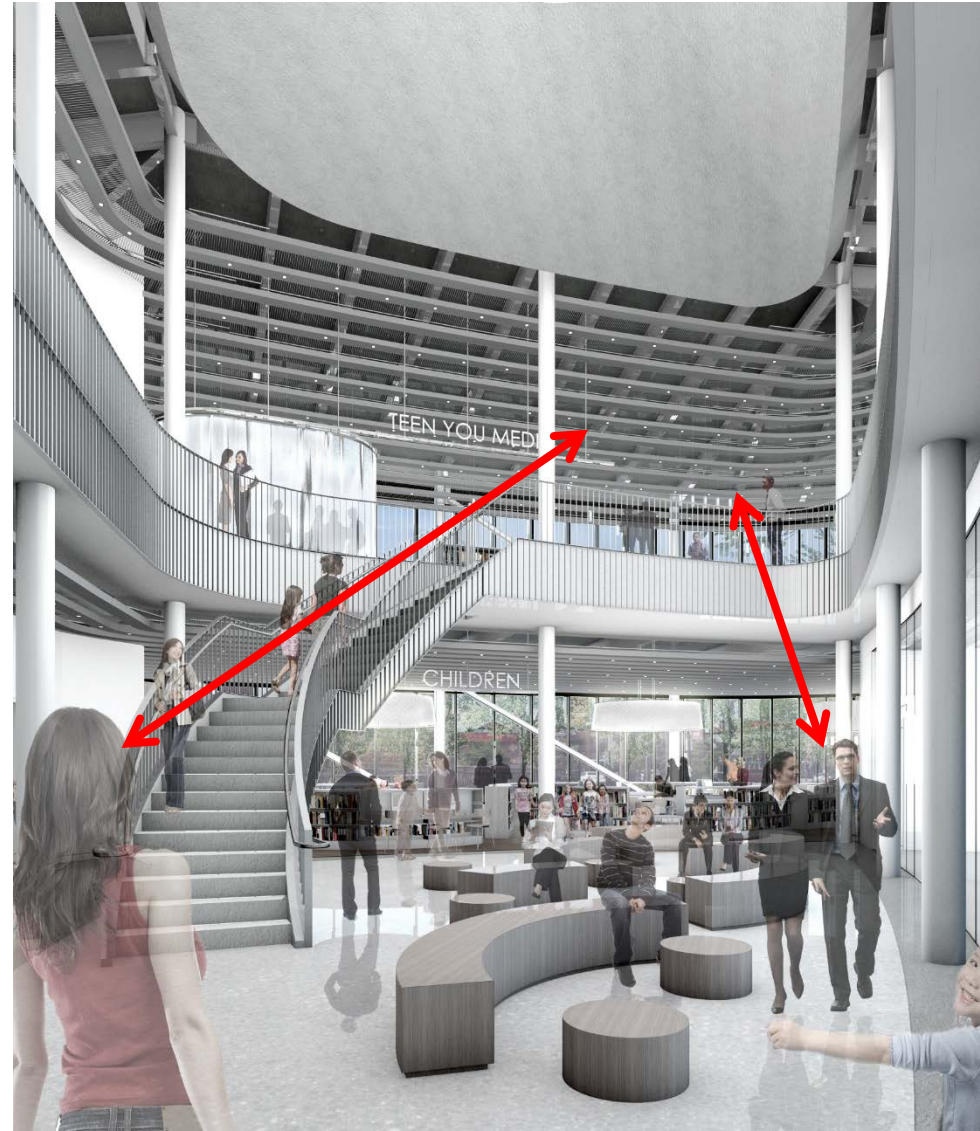
PUBLIC BUILDING COMMISSION OF CHICAGO

Chinatown Branch Library

Feng Shui

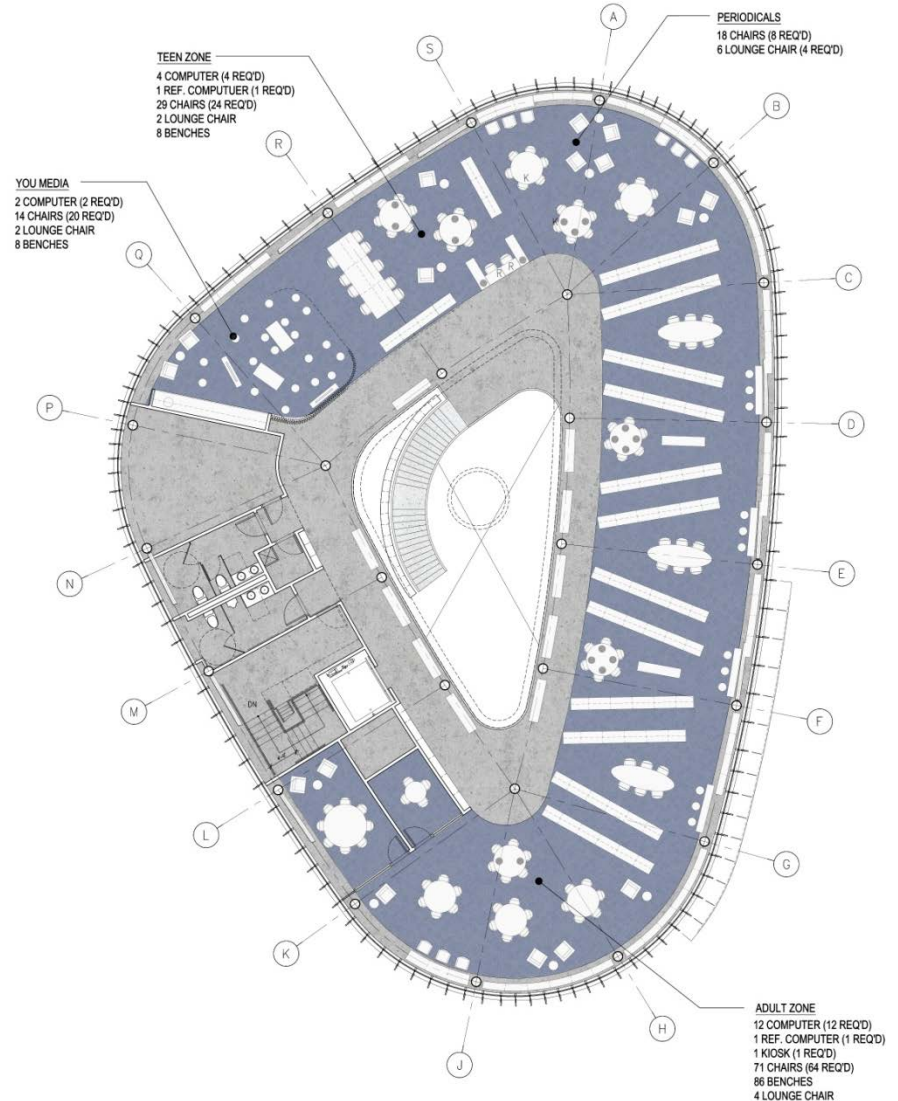
The ceiling bands suggest movement and flow but should not be black and red or any other strident color.

Having openness and a sense of connection to the second level is desirable.



Second Level Programs

- YOU Media area
- Teen area
- Periodicals and Reference area
- Adult area
- State-of-the-art technology for public use
- Study and meeting rooms
- Restrooms





Chicago
Public
Library



PUBLIC BUILDING COMMISSION OF CHICAGO

Chinatown Branch Library



PERIODICALS / TEEN READING / YOUMEDIA AREA AT LEVEL 2



Chicago
Public
Library



PUBLIC BUILDING COMMISSION OF CHICAGO

Chinatown Branch Library



ADULT READING / BROWSING AREA AT LEVEL 2



Chicago
Public
Library



PUBLIC BUILDING COMMISSION OF CHICAGO

Chinatown Branch Library



ADULT READING / PERIODICALS AREA AT LEVEL 2



Chicago
Public
Library

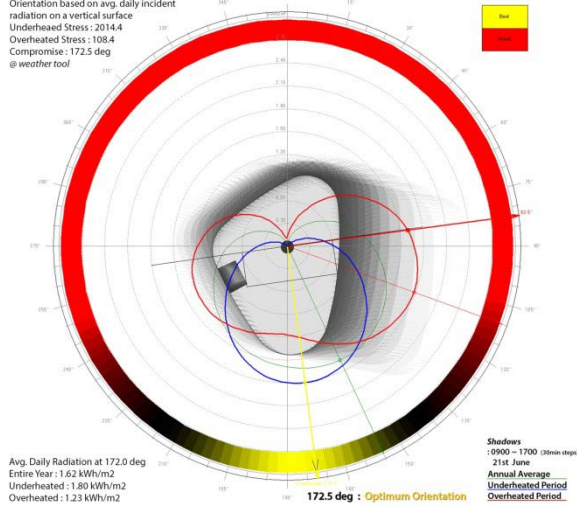


PUBLIC BUILDING COMMISSION OF CHICAGO

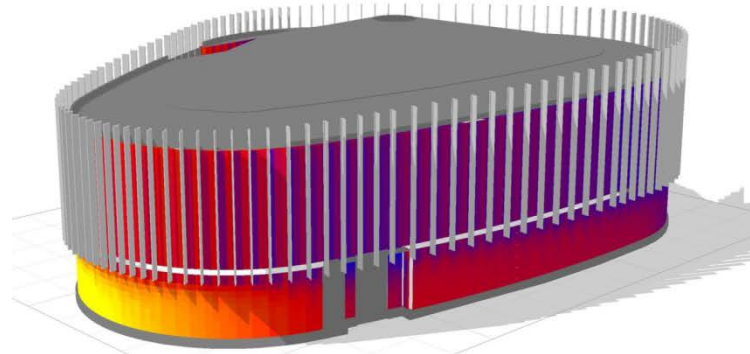
Chinatown Branch Library



Optimum Orientation
 Location : Chicago / Midway, USA
 Orientation based on avg. daily incident radiation on a vertical surface
 Underheated Stress : 2014.4
 Overheated Stress : 108.4
 Compromise : 172.5 deg
 @ weather tool

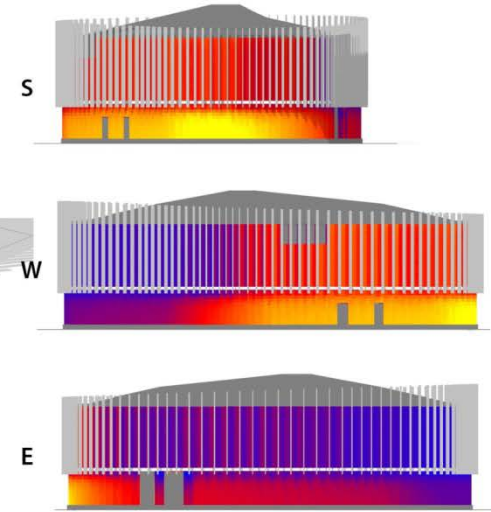


Vertical FINS

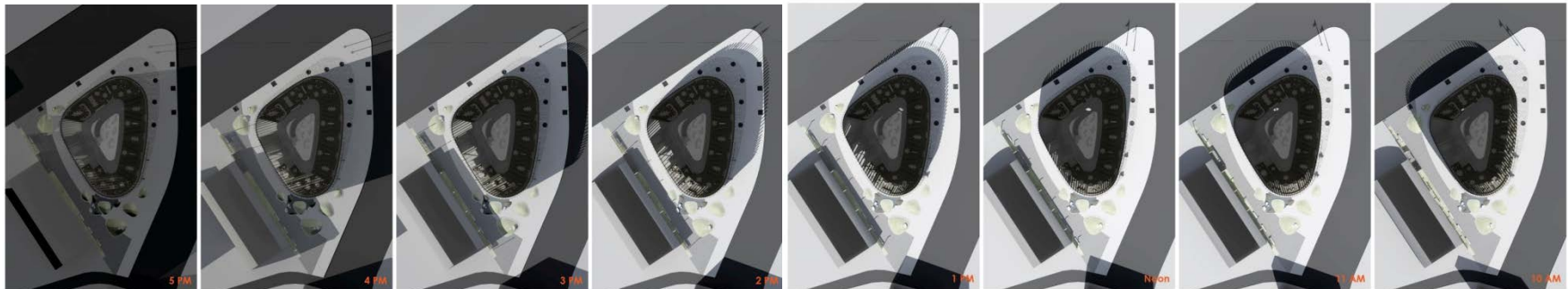


Wh/m2	Direct Radiation	Diffuse Radiation	Total Radiation
MAX	497494	196374	692692
MIN	0	77515	83254
AVG	137372	147315	284687

0900 ~ 1700 all year



29.2 % Less





Chicago
Public
Library



PUBLIC BUILDING COMMISSION OF CHICAGO

Chinatown Branch Library

Feng Shui

Natural materials such as wood, aluminum, or copper material would be appropriate for the screen. A warm colored, golden tone material is preferred.

The building has a good blend of eastern and western culture.

An auspicious day for the Library opening event ceremony should be selected.



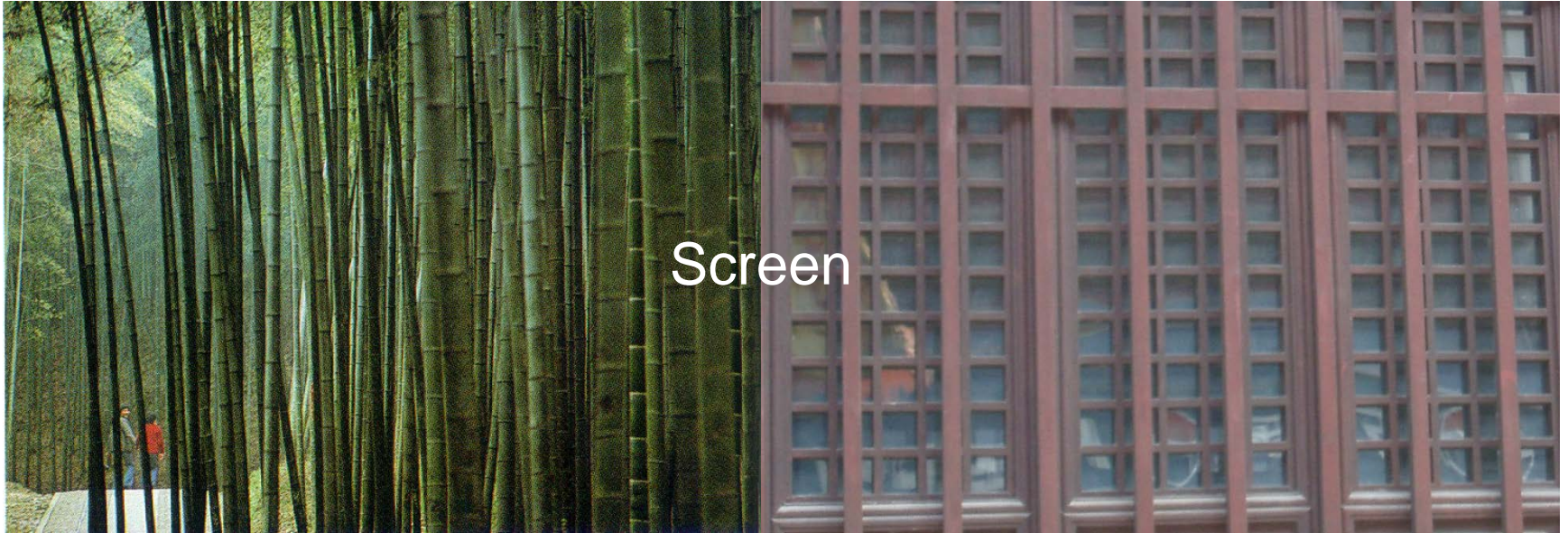


Chicago
Public
Library



PUBLIC BUILDING COMMISSION OF CHICAGO

Chinatown Branch Library



Screen



Lantern



Chicago
Public
Library



PUBLIC BUILDING COMMISSION OF CHICAGO

Chinatown Branch Library





Chicago
Public
Library



PUBLIC BUILDING COMMISSION OF CHICAGO

Chinatown Branch Library





Chicago
Public
Library



PUBLIC BUILDING COMMISSION OF CHICAGO
Chinatown Branch Library

Project Development Schedule

Visioning Session	March 13, 2013
Board Contract Award	August 20, 2013
Design Start	September 6, 2013
Construction Start	May 2014
Projected Facility Opening	Summer 2015



Chicago
Public
Library



PUBLIC BUILDING COMMISSION OF CHICAGO
Chinatown Branch Library

Commitment to Economic Sustainability Programs for the Community

- Programs Include:
 - Bid incentives for the employment of apprentices
 - Bid incentives for the employment of minority and female workers
 - Contract provisions that require at least 50% of the labor force be residents of the City of Chicago
 - Contract provisions with regard for community hiring, helping to employ those closest to the work at hand
 - Contract provisions that require minority- and women-owned business participation
 - Contract provisions for local business participation



Chicago
Public
Library



PUBLIC BUILDING COMMISSION OF CHICAGO
Chinatown Branch Library

Point of Contact:

- Molly Sullivan, Deputy Director,
Media and Public Information, PBC
312-744-9277
Molly.Sullivan@cityofchicago.org



Chicago
Public
Library



PUBLIC BUILDING COMMISSION OF CHICAGO
Chinatown Branch Library

Question & Answer