



PUBLIC BUILDING COMMISSION OF CHICAGO

Dunne Technology Academy

November 10, 2014

WELCOME

CHANDRA BYRD-WRIGHT,
PRINCIPAL,
DUNNE TECHNOLOGY ACADEMY



PUBLIC BUILDING COMMISSION OF CHICAGO

Dunne Technology Academy

November 10, 2014

REMARKS

CARRIE AUSTIN,
34TH WARD ALDERMAN, CITY OF CHICAGO



PUBLIC BUILDING COMMISSION OF CHICAGO

Dunne Technology Academy

November 10, 2014

VIDEO PRESENTATION



PUBLIC BUILDING COMMISSION OF CHICAGO

Dunne Technology Academy

November 10, 2014

PBC PRESENTATION ON BUILDING DESIGN

ART DEL MURO,
MANAGING ARCHITECT, PBC



PUBLIC BUILDING COMMISSION OF CHICAGO

Dunne Technology Academy

November 10, 2014





PUBLIC BUILDING COMMISSION OF CHICAGO

Dunne Technology Academy

November 10, 2014

Recent Projects



PUBLIC BUILDING COMMISSION OF CHICAGO

Dunne Technology Academy

November 10, 2014



Oliver Wendell Holmes Elementary School Addition



PUBLIC BUILDING COMMISSION OF CHICAGO

Dunne Technology Academy

November 10, 2014



Classroom at Garvy Elementary School Addition



PUBLIC BUILDING COMMISSION OF CHICAGO

Dunne Technology Academy

November 10, 2014



Classroom at Sauganash Elementary School Addition



PUBLIC BUILDING COMMISSION OF CHICAGO

Dunne Technology Academy

November 10, 2014



Science Lab at Sauganash Elementary School Addition



PUBLIC BUILDING COMMISSION OF CHICAGO

Dunne Technology Academy

November 10, 2014



Science Lab at Edgebrook Elementary School Addition



PUBLIC BUILDING COMMISSION OF CHICAGO

Dunne Technology Academy

November 10, 2014



Gymnasium at Miles Davis Academy



PUBLIC BUILDING COMMISSION OF CHICAGO

Dunne Technology Academy

November 10, 2014

Tentative Project Program

New Building

- Science Classroom
- Pre-Engineering Lab
- Gymnasium
- Gymnasium Office
- Restrooms
- Elevator
- Link to existing building

Existing (West) Building

- 18 Classrooms
- Library / Media Room
- Offices
- Multipurpose / Lunch Room
- Kitchen

Upgrades

- Renovation of existing Classrooms
- Renovation of existing Restrooms
- Interior finish upgrades throughout
- Window replacement
- Roof replacement
- Building facade repairs
- Wireless access points
- Update intercom system
- Refurbish mechanicals
- Updates to security system

Exterior Amenities

- New Playlot
- Artificial Turf field

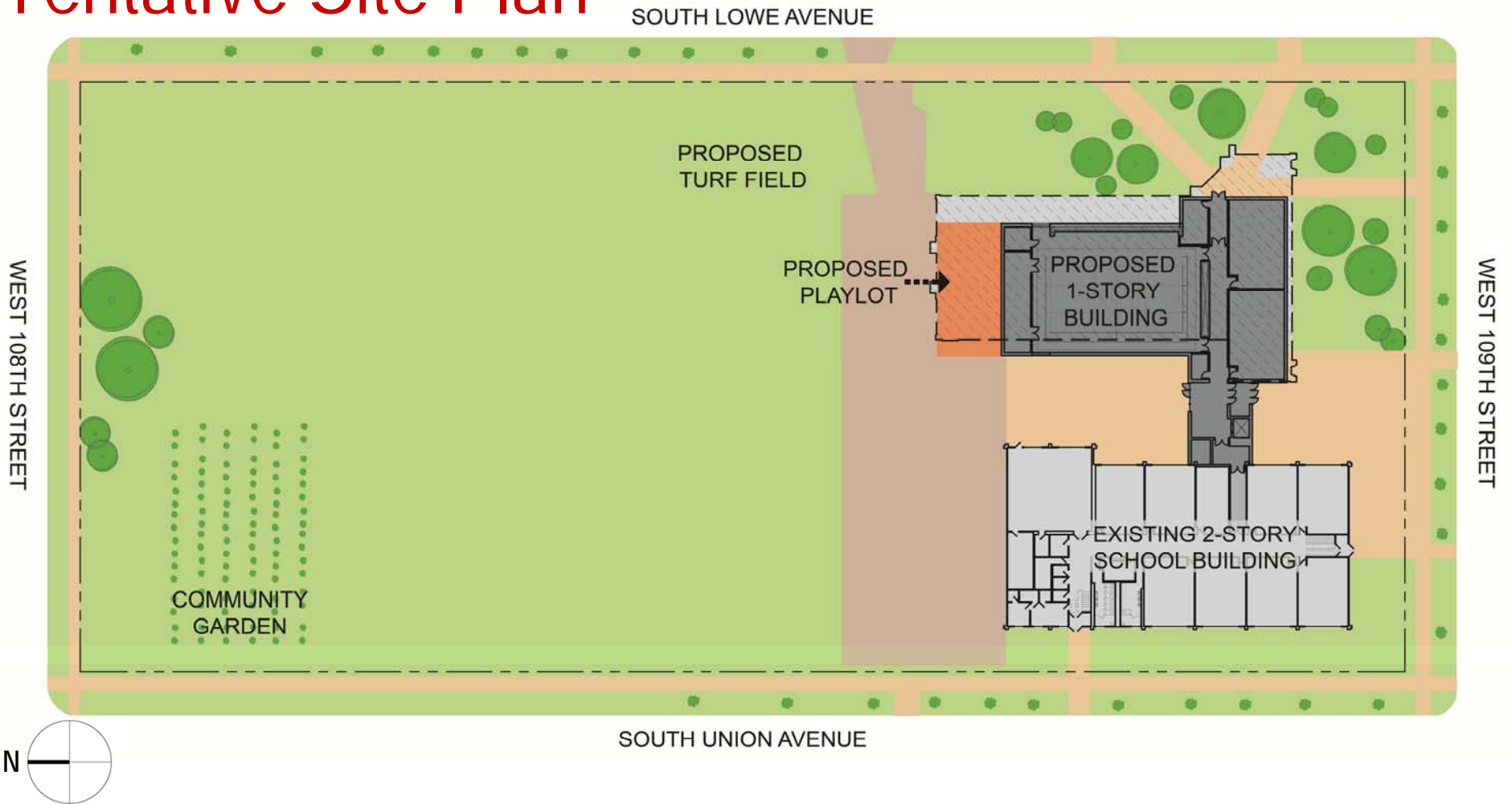


PUBLIC BUILDING COMMISSION OF CHICAGO

Dunne Technology Academy

November 10, 2014

Tentative Site Plan





PUBLIC BUILDING COMMISSION OF CHICAGO

Dunne Technology Academy

November 10, 2014

Anticipated Project Development Schedule

Dec 2014 – Jan 2015

Abatement / Demolition of Existing East Building

Nov 2014 – Mar 2015

Design Phase of New Construction & Renovation Scope

Jun 2015 – Aug 2015

Renovation of Existing Building

Mar 2015 – Fall 2015

New Construction of Addition



PUBLIC BUILDING COMMISSION OF CHICAGO

Dunne Technology Academy

November 10, 2014

Commitment to Sustainable Development for the Environment

- Diversion of construction waste from landfills
- Utilization of durable and recycled materials in construction
- Reflective roofs
- Occupancy light sensors/controls
- High efficiency heating and cooling systems
- Low flow/low consumption water usage
- Native and adaptive landscape species
- Aggressive storm water management



PUBLIC BUILDING COMMISSION OF CHICAGO

Dunne Technology Academy

November 10, 2014

ECONOMIC SUSTAINABILITY

LORI LYPSON,
CHIEF OPERATIONS OFFICER, PBC



PUBLIC BUILDING COMMISSION OF CHICAGO

Dunne Technology Academy

November 10, 2014

Commitment to Economic Sustainability Programs for the Community

- Bid incentives for the employment of apprentices
- Bid incentives for the employment of minority and female workers
- Contract provisions that require at least 50% of the labor force be residents of the City of Chicago
- Contract provisions with regard for community hiring, helping to employ those closest to the work at hand
- Contract provisions that require minority- and women-owned business participation
- Contract provisions for local business participation



PUBLIC BUILDING COMMISSION OF CHICAGO

Dunne Technology Academy

November 10, 2014

STEM PROGRAM

RUKIYA CURVEY JOHNSON

EXECUTIVE DIRECTOR:

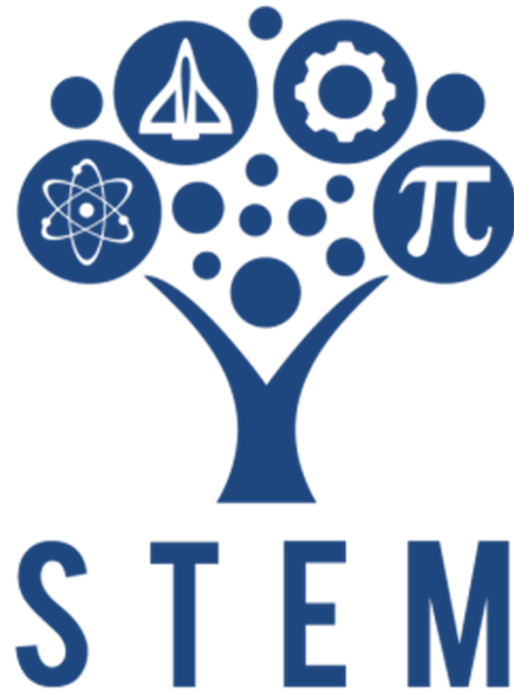
STEM & STRATEGIC INITIATIVES, CPS



PUBLIC BUILDING COMMISSION OF CHICAGO
Dunne Technology Academy

November 10, 2014

Dunne Technology Academy



Candidate for the CPS STEM Initiative Program



PUBLIC BUILDING COMMISSION OF CHICAGO

Dunne Technology Academy

November 10, 2014

An Opportunity: Dunne

- Dunne Technology Academy is a Pre K-8 elementary school located in the Roseland community on the far south side of Chicago
- In 2008, Dunne became one of five CPS neighborhood schools to receive a technology magnet program
- In 2015, Dunne will become a STEM school under the 3 year CPS STEM incubation. STEM will take Dunne beyond a focus on technology alone to an integrated curriculum of Science, Technology, Engineering, and Math

Leadership

- Chandra R Byrd-Wright, Principal
- Benita Parker-Owens, AP

Location

- 10845 S. Union Ave, Chicago, IL 60628
- Nearest ECSS – Corliss, 821 E 103rd St, Chicago, IL 60628

Demographics

- 242 students
- 98% Black
- 95% Low-income
- 10% Diverse Learners

2013 School Progress Report

- Level 2 school, not on probation
- Student Growth: Average
- Student Attainment: Below Average
- School Culture: Well-Organized



PUBLIC BUILDING COMMISSION OF CHICAGO

Dunne Technology Academy

November 10, 2014

What is STEM?

- STEM is an acronym for Science, Technology, Engineering, and Math
- STEM education teaches these subjects in an interdisciplinary and applied approach
- STEM is not just a class, it is a culture of creativity and inquiry that allows students to make real world connections with concepts

STEM Learners:

- Are encouraged to ask questions
- Experiment...try to solve problems and answer questions
- Collaborate with their peers
- Arrive at meaningful conclusions
- Explore STEM careers



PUBLIC BUILDING COMMISSION OF CHICAGO

Dunne Technology Academy

November 10, 2014

Why does STEM education matter?

CURRENT COLLEGE READINESS

Percentage of 2013 U.S. high school graduates ready for college-level courses.

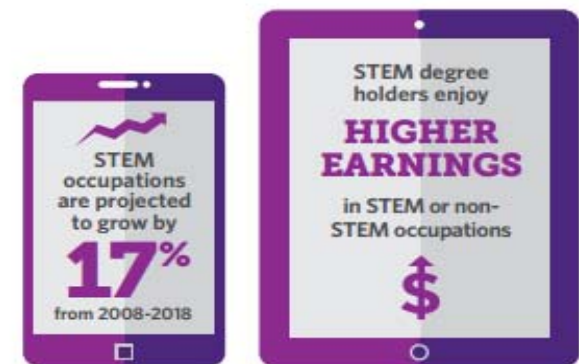


We face a shortage of workers and students proficient in math and science. Compared to their global peers, U.S. students recently finished...



STEM Jobs in High Demand

STEM jobs are in higher demand and pay more on average than non-STEM related jobs:





PUBLIC BUILDING COMMISSION OF CHICAGO

Dunne Technology Academy

November 10, 2014

CPS STEM Education Model

Strong instruction in science, technology, engineering, and math is essential to preparing students for success in any STEM field.

At CPS STEM schools, students get:

- ***More math & science*** minutes of instruction than at traditional schools
- ***Engineering and computer science*** instruction embedded in core math & science courses
- ***Technology*** integrated across all subjects
- ***Problem-based learning*** opportunities with hands-on projects to teach students to apply STEM concepts to solve real-world problems
- ***STEM Learning Labs*** where students can explore new technologies and build skill in a variety of STEM disciplines

In addition, students are encouraged to:

- ***Adopt STEM behaviors*** commonly used in STEM professionals such as curiosity, risk-taking, teamwork, and persistence
- ***Participate*** in STEM enrichment clubs and competitions



PUBLIC BUILDING COMMISSION OF CHICAGO

Dunne Technology Academy

November 10, 2014

STEM: Three Year Overview

Year 1 <i>"Planning & Preparing "</i>	Year 2 <i>"Planting and Nurturing "</i>	Year 3 and beyond <i>"Maintaining and Growing "</i>
<ul style="list-style-type: none"> • Building the foundational structures, changes in instructional planning & practice • Cooperative and problem-based learning training • Creating engagement and awareness events • Technology acquisition & integration • Developing partnerships and enrichment opportunities 	<ul style="list-style-type: none"> • Strengthening Math/Science teaching; Engineering Concepts • Training for Engineering Curriculum; • Continued development of professional learning communities • STEM habits of mind; select STEM focus areas (e.g. IT or biotechnology) • Evaluation and assessment of implementation 	<ul style="list-style-type: none"> • Full implementation of Engineering curriculum • Strengthening teacher practice and content area knowledge • Ongoing evaluation of implementation and plans for improvement
Exploratory/Introductory	Partial Immersion	Full Immersion



PUBLIC BUILDING COMMISSION OF CHICAGO

Dunne Technology Academy

November 10, 2014

Comments & Concerns for CPS

STEM:

Elementary Magnet Coordinator:

Dr. Michelle Frazier (mfrazier1@cps.edu)

OVERALL:

Executive Director:

Rukiya Curvey Johnson (rcurvey-joh@cps.edu)



PUBLIC BUILDING COMMISSION OF CHICAGO

Dunne Technology Academy

November 10, 2014

Comments & Concerns for PBC

Point of Contact:

Molly Sullivan, Deputy Director,
Media and Public Information, PBC

312-744-9277

Molly.Sullivan@cityofchicago.org



PUBLIC BUILDING COMMISSION OF CHICAGO

Dunne Technology Academy

November 10, 2014

QUESTION & ANSWER