



# PUBLIC BUILDING COMMISSION OF CHICAGO

## Southwest Area School

March 18, 2015

# PBC PRESENTATION ON BUILDING DESIGN



# PUBLIC BUILDING COMMISSION OF CHICAGO

## Southwest Area School

March 18, 2015

# Proposed Project Program

## Building Features

- Approximately 133,000 square feet
- 3-floor Steel Frame and Masonry Construction
- Capacity: 1,500 Middle School Students
- 54 Standard Academic Classrooms
- 4 Computer Labs
- 4 Science Classrooms
- 2 Art Classrooms
- 2 Music Rooms
- 1 Library
- 2 Gymnasiums with Shared Stage
- 1 Administrative Suite and 1 Social Service Suite
- Kitchen and Dining Facilities
- Wireless network throughout school
- Central Air Conditioning
- Fully Accessible to People with Disabilities

## Exterior Amenities

- Reflective Roof
- Parking Lot
- Athletic Fields
- Equipment Storage
- Toilet Facilities



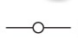


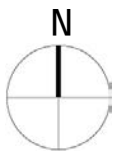
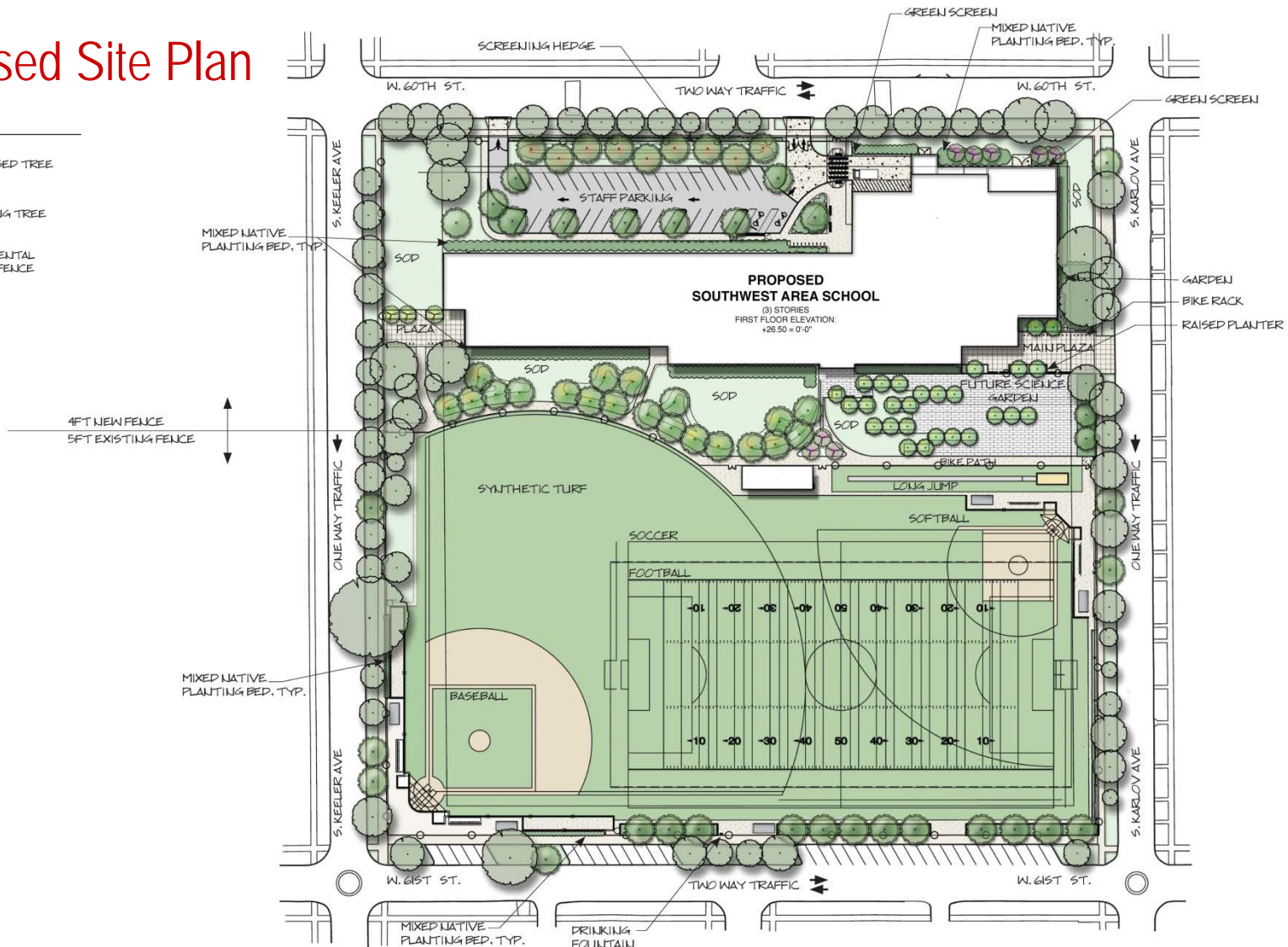
# PUBLIC BUILDING COMMISSION OF CHICAGO

## Southwest Area School

March 18, 2015

### Proposed Site Plan

- LEGEND**
-  PROPOSED TREE
  -  EXISTING TREE
  -  ORNAMENTAL METAL FENCE





# PUBLIC BUILDING COMMISSION OF CHICAGO

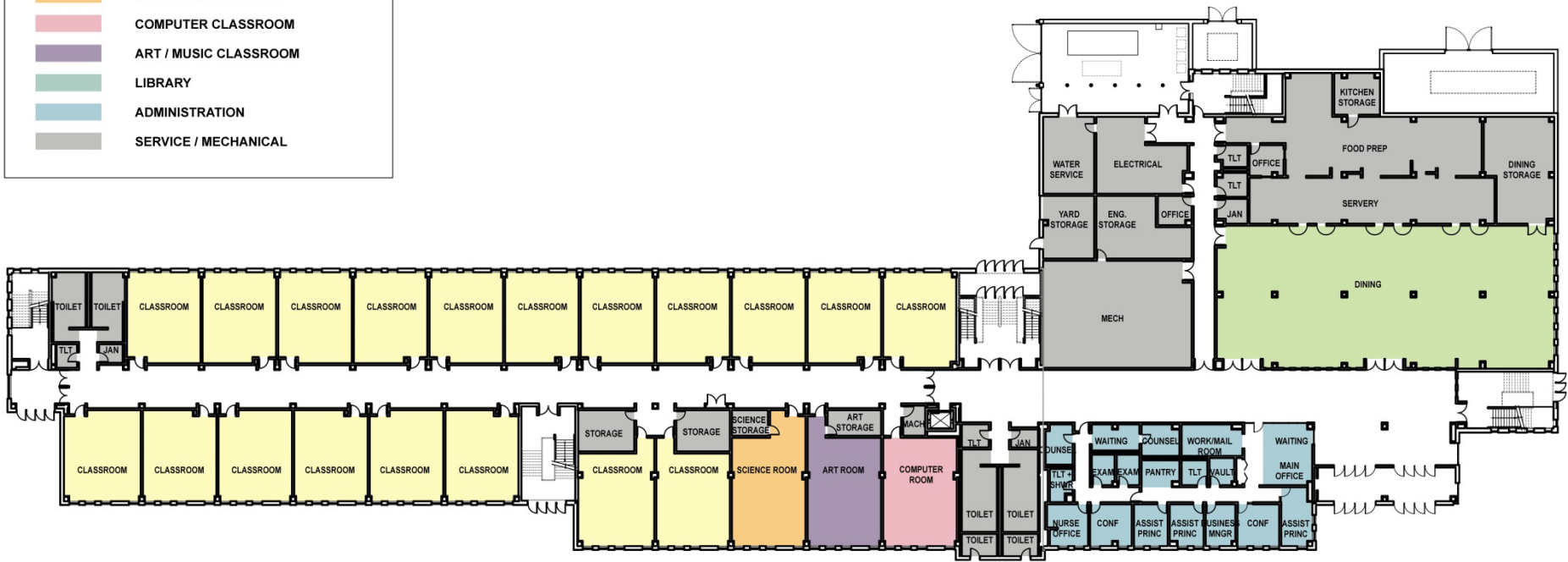
## Southwest Area School

March 18, 2015

### Proposed First Floor Plan

**LEGEND**

<span style="display:inline-block; width:15px; height:15px; background-color:yellow;"></span>	GENERAL CLASSROOM / INSTRUCTION
<span style="display:inline-block; width:15px; height:15px; background-color:lightgreen;"></span>	DINING ROOM / MUTIPURPOSE
<span style="display:inline-block; width:15px; height:15px; background-color:orange;"></span>	SCIENCE CLASSROOM
<span style="display:inline-block; width:15px; height:15px; background-color:lightcoral;"></span>	COMPUTER CLASSROOM
<span style="display:inline-block; width:15px; height:15px; background-color:purple;"></span>	ART / MUSIC CLASSROOM
<span style="display:inline-block; width:15px; height:15px; background-color:lightblue;"></span>	LIBRARY
<span style="display:inline-block; width:15px; height:15px; background-color:teal;"></span>	ADMINISTRATION
<span style="display:inline-block; width:15px; height:15px; background-color:gray;"></span>	SERVICE / MECHANICAL





# PUBLIC BUILDING COMMISSION OF CHICAGO

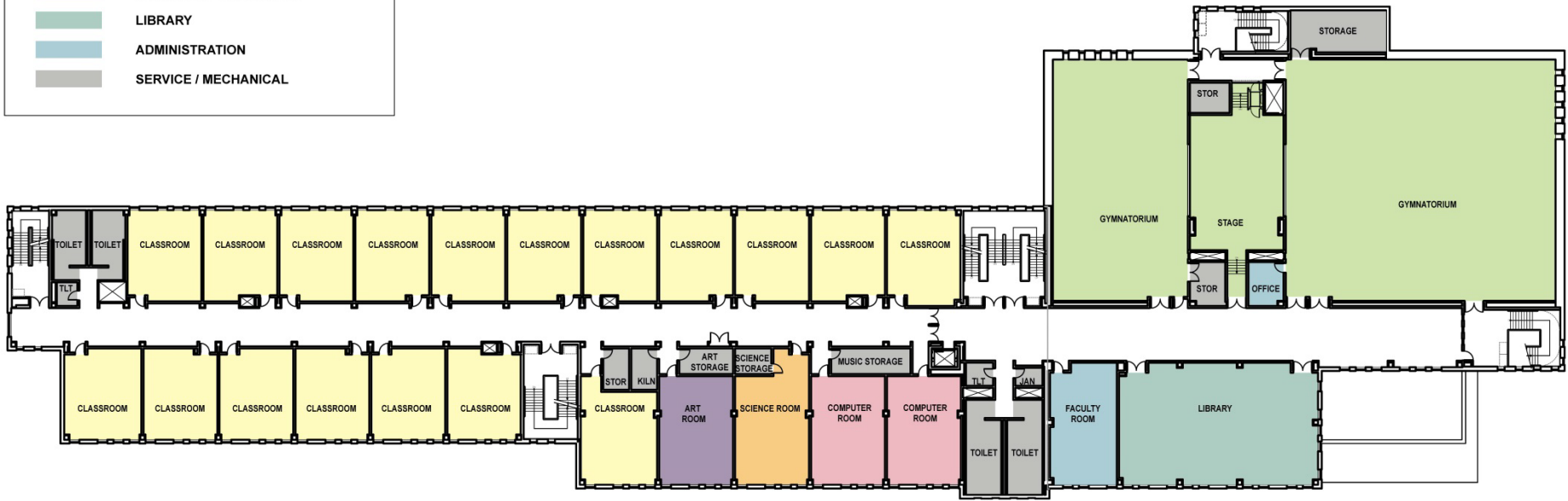
## Southwest Area School

March 18, 2015

### Proposed Second Floor Plan

**LEGEND**

Yellow	GENERAL CLASSROOM / INSTRUCTION
Light Green	DINING ROOM / MUTIPURPOSE
Orange	SCIENCE CLASSROOM
Pink	COMPUTER CLASSROOM
Purple	ART / MUSIC CLASSROOM
Teal	LIBRARY
Light Blue	ADMINISTRATION
Grey	SERVICE / MECHANICAL





# PUBLIC BUILDING COMMISSION OF CHICAGO

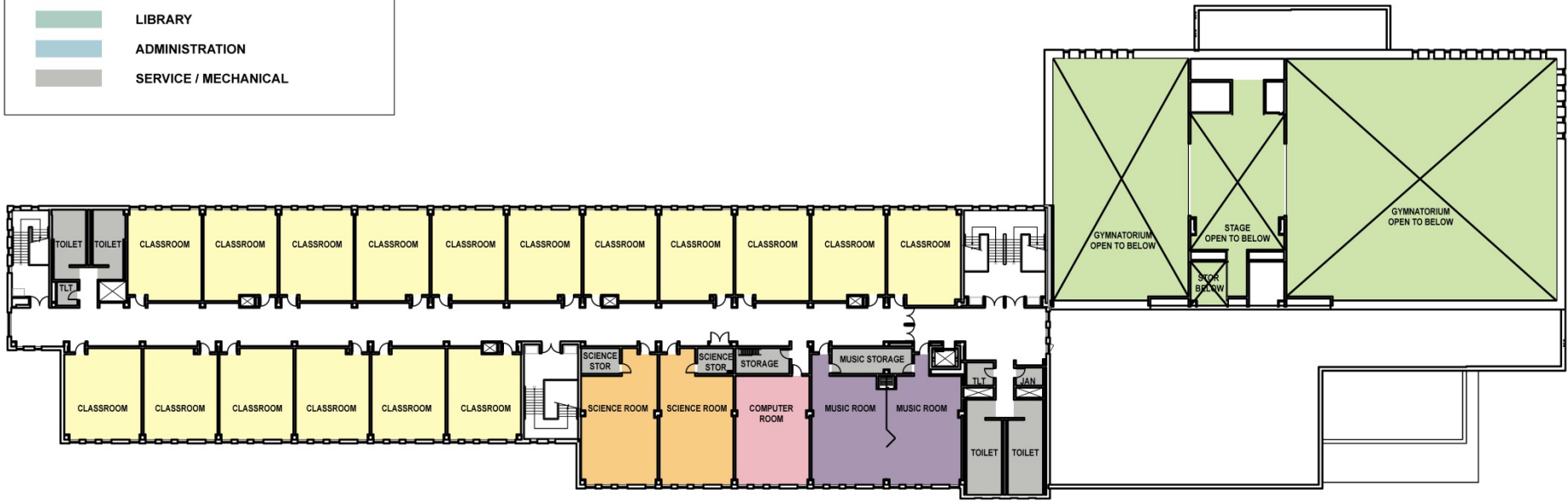
## Southwest Area School

March 18, 2015

### Proposed Third Floor Plan

**LEGEND**

- GENERAL CLASSROOM / INSTRUCTION
- DINING ROOM / MUTIPURPOSE
- SCIENCE CLASSROOM
- COMPUTER CLASSROOM
- ART / MUSIC CLASSROOM
- LIBRARY
- ADMINISTRATION
- SERVICE / MECHANICAL







# PUBLIC BUILDING COMMISSION OF CHICAGO

## Southwest Area School

March 18, 2015

### Proposed Rendering





# PUBLIC BUILDING COMMISSION OF CHICAGO

## Southwest Area School

March 18, 2015

## Proposed Rendering







# PUBLIC BUILDING COMMISSION OF CHICAGO

## Southwest Area School

March 18, 2015

## Proposed Rendering





# Construction/Project Development Schedule:

MARCH 2015	ISSUE FOR BID
APRIL 2015	CONTRACT AWARDED
MAY 2015	CONSTRUCTION MOBILIZATION START
OCTOBER 2015	SUBSTANTIAL COMPLETION (FIELDS)
NOVEMBER 2015	FACILITY OPENING (FIELDS)
DECEMBER 2016	SUBSTANTIAL COMPLETION (SCHOOL)



# Commitment to Sustainable Development for the Environment

- Diversion of construction waste from landfills
- Utilization of durable and recycled materials in construction
- Reflective roofs
- Occupancy light sensors/controls
- High efficiency heating and cooling systems
- Low flow/low consumption water usage
- Native and adaptive landscape species
- Aggressive storm water management



# Commitment to Economic Sustainability Programs for the Community

- Bid incentives for the employment of apprentices
- Bid incentives for the employment of minority and female workers
- Contract provisions that require at least 50% of the labor force be residents of the City of Chicago
- Contract provisions with regard for community hiring, helping to employ those closest to the work at hand
- Contract provisions that require minority- and women-owned business participation
- Contract provisions for local business participation