



CHICAGO PUBLIC SCHOOLS



Powell Replacement Elementary School

- OPENING*
- REMARKS*
- DEMOGRAPHICS*
- DESIGN*
- CONSTRUCTION*
- COMMUNITY*
- SCHEDULE*
- PROGRAMMING*
- Q&A*



7511 South Shore Drive

November 18, 2008



CHICAGO PUBLIC SCHOOLS



Powell Replacement Elementary School

AGENDA

OPENING

DEREK JORDAN
PRINCIPAL, A.C. POWELL JR. ELEMENTARY SCHOOL, CPS

REMARKS

SANDI JACKSON
ALDERMAN, 7th WARD

DEMOGRAPHICS & BOUNDARIES

JAMES DISPENSA
SCHOOL DEMOGRAPHICS AND PLANNING, CPS

BUILDING DESIGN

LEONA KETTERL
DEPUTY DIRECTOR FOR EDUCATION DESIGN, PBC

BUILDING CONSTRUCTION

EARL MANNING
DEPUTY PROGRAM MANAGER FOR CONSTRUCTION, PBC

COMMUNITY RELATIONS

CHARLES KELLY
DEPUTY DIRECTOR OF ADMINISTRATION, PBC
DWAYNE HIGHTOWER
DEPUTY DIRECTOR FOR COMMUNITY RELATIONS, PBC

PROJECT DEVELOPMENT SCHEDULE

TERRI HAYMAKER
DIRECTOR OF PLANNING, PBC

EDUCATIONAL PROGRAMMING

DELENA LITTLE
AREA INSTRUCTION OFFICER, AREA 7, CPS

QUESTION AND ANSWER

ALL

OPENING

REMARKS

DEMOGRAPHICS

DESIGN

CONSTRUCTION

COMMUNITY

SCHEDULE

PROGRAMMING

Q&A



CHICAGO PUBLIC SCHOOLS



Powell Replacement Elementary School

OPENING

OPENING ←

REMARKS

DEMOGRAPHICS

DESIGN

CONSTRUCTION

COMMUNITY

SCHEDULE

PROGRAMMING

Q&A

DEREK JORDAN

*PRINCIPAL, A.C. POWELL JR. ELEMENTARY
SCHOOL, CPS*



CHICAGO PUBLIC SCHOOLS



Powell Replacement Elementary School

REMARKS

OPENING

REMARKS ←

DEMOGRAPHICS

DESIGN

CONSTRUCTION

COMMUNITY

SCHEDULE

PROGRAMMING

Q&A

SCHOOL

SANDI JACKSON

ALDERMAN, 7th WARD



CHICAGO PUBLIC SCHOOLS



Powell Replacement Elementary School

CPS PRESENTATION ON DEMOGRAPHICS & BOUNDARIES

OPENING

REMARKS

DEMOGRAPHICS ←

DESIGN

CONSTRUCTION

COMMUNITY

SCHEDULE

PROGRAMMING

Q&A

JAMES DISPENSA

DIRECTOR OF DEMOGRAPHICS

AND PLANNING, CPS

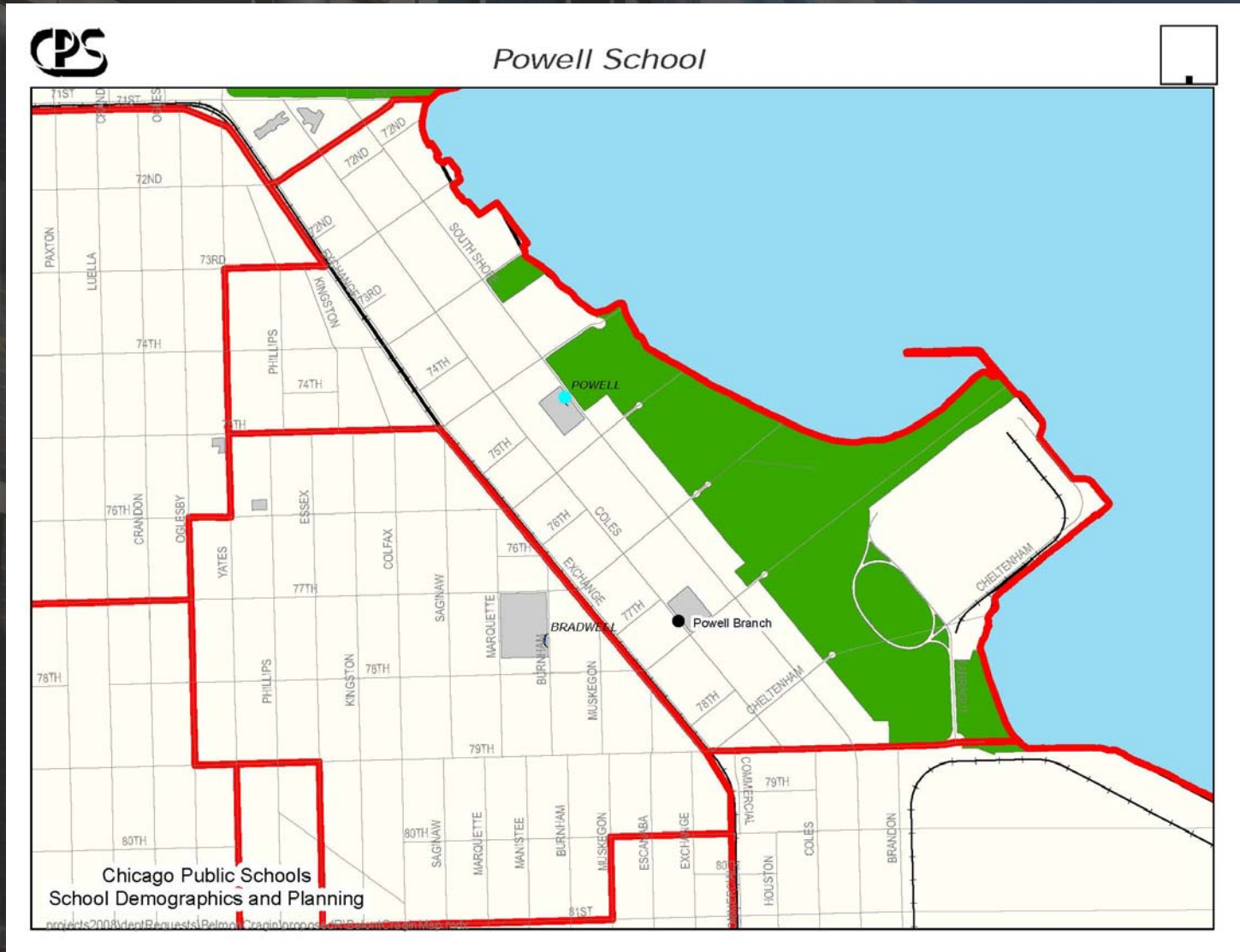


CHICAGO PUBLIC SCHOOLS



Powell Replacement Elementary School

- OPENING
- REMARKS
- DEMOGRAPHICS ←
- DESIGN
- CONSTRUCTION
- COMMUNITY
- SCHEDULE
- PROGRAMMING
- Q&A





CHICAGO PUBLIC SCHOOLS



Powell Replacement Elementary School

OPENING

REMARKS

DEMOGRAPHICS ←

DESIGN

CONSTRUCTION

COMMUNITY

SCHEDULE

PROGRAMMING

Q&A

2008-09 Total Attending (TA): **548**
2008-09 Total Residing (TR): **861**

8-yr Avg TA: **554**
8-yr Avg TR: **993**

Why is TR more important than TA when building a new school?

A neighborhood school facility needs to have a sufficient amount of space to accommodate approx. 90% of the public school students residing within its attendance area. Even though TA is less than TR, typically a new school building will attract a greater percentage of TR than historic enrollment numbers indicate

Why is 8-yr Avg TR more important than current TR?

Since school buildings are designed to last many years, CPS must anticipate continued fluctuations in TR. The 8-yr Avg is a stronger measure of the number of public school students likely to live in the area over many years.

Design Capacity of Existing Powell (main bldg): 615
Design Capacity of Mobile Classrooms: 120
Design Capacity of Temporary/Leased St. Bride's: 330
Total Capacity: 1,065 (Program Capacity: 852)

42% of Existing Space consists of mobile and leased capacity
New school building will provide the Board with an opportunity to decommission both mobile and temporary/leased capacity



CHICAGO PUBLIC SCHOOLS



Powell Replacement Elementary School

PBC PRESENTATION ON
BUILDING DESIGN

OPENING

REMARKS

DEMOGRAPHICS

DESIGN ←

CONSTRUCTION

COMMUNITY

SCHEDULE

PROGRAMMING

Q&A

LEONA KETTERL, AIA, LEED AP
*DEPUTY DIRECTOR for EDUCATION
DESIGN, PBC*



CHICAGO PUBLIC SCHOOLS



Powell Replacement Elementary School

OPENING

REMARKS

DEMOGRAPHICS

DESIGN ←

CONSTRUCTION

COMMUNITY

SCHEDULE

PROGRAMMING

Q&A



©2004 James Steinkamp: Steinkamp/Ballogg Photography



CHICAGO PUBLIC SCHOOLS



Powell Replacement Elementary School

- OPENING
- REMARKS
- DEMOGRAPHICS
- DESIGN ←
- CONSTRUCTION
- COMMUNITY
- SCHEDULE
- PROGRAMMING
- Q&A





CHICAGO PUBLIC SCHOOLS



Powell Replacement Elementary School

- OPENING
- REMARKS
- DEMOGRAPHICS
- DESIGN** ←
- CONSTRUCTION
- COMMUNITY
- SCHEDULE
- PROGRAMMING
- Q&A





CHICAGO PUBLIC SCHOOLS



Powell Replacement Elementary School

- OPENING
- REMARKS
- DEMOGRAPHICS
- DESIGN ←
- CONSTRUCTION
- COMMUNITY
- SCHEDULE
- PROGRAMMING
- Q&A





CHICAGO PUBLIC SCHOOLS



Powell Replacement Elementary School

- OPENING
- REMARKS
- DEMOGRAPHICS
- DESIGN ←
- CONSTRUCTION
- COMMUNITY
- SCHEDULE
- PROGRAMMING
- Q&A



©2004 James Steinkamp: Steinkamp/Ballogg Photography



©2004 James Steinkamp: Steinkamp/Ballogg Photography



CHICAGO PUBLIC SCHOOLS



Powell Replacement Elementary School

- OPENING
- REMARKS
- DEMOGRAPHICS
- DESIGN ←
- CONSTRUCTION
- COMMUNITY
- SCHEDULE
- PROGRAMMING
- Q&A



©2004 James Steinkamp: Steinkamp/Ballogg Photography





CHICAGO PUBLIC SCHOOLS



Powell Replacement Elementary School

- OPENING
- REMARKS
- DEMOGRAPHICS
- DESIGN** ←
- CONSTRUCTION
- COMMUNITY
- SCHEDULE
- PROGRAMMING
- Q&A





CHICAGO PUBLIC SCHOOLS



Powell Replacement Elementary School

- OPENING
- REMARKS
- DEMOGRAPHICS
- DESIGN ←
- CONSTRUCTION
- COMMUNITY
- SCHEDULE
- PROGRAMMING
- Q&A



©2004 James Steinkamp: Steinkamp/Ballogg Photography



CHICAGO PUBLIC SCHOOLS



Powell Replacement Elementary School

- OPENING
- REMARKS
- DEMOGRAPHICS
- DESIGN ←
- CONSTRUCTION
- COMMUNITY
- SCHEDULE
- PROGRAMMING
- Q&A



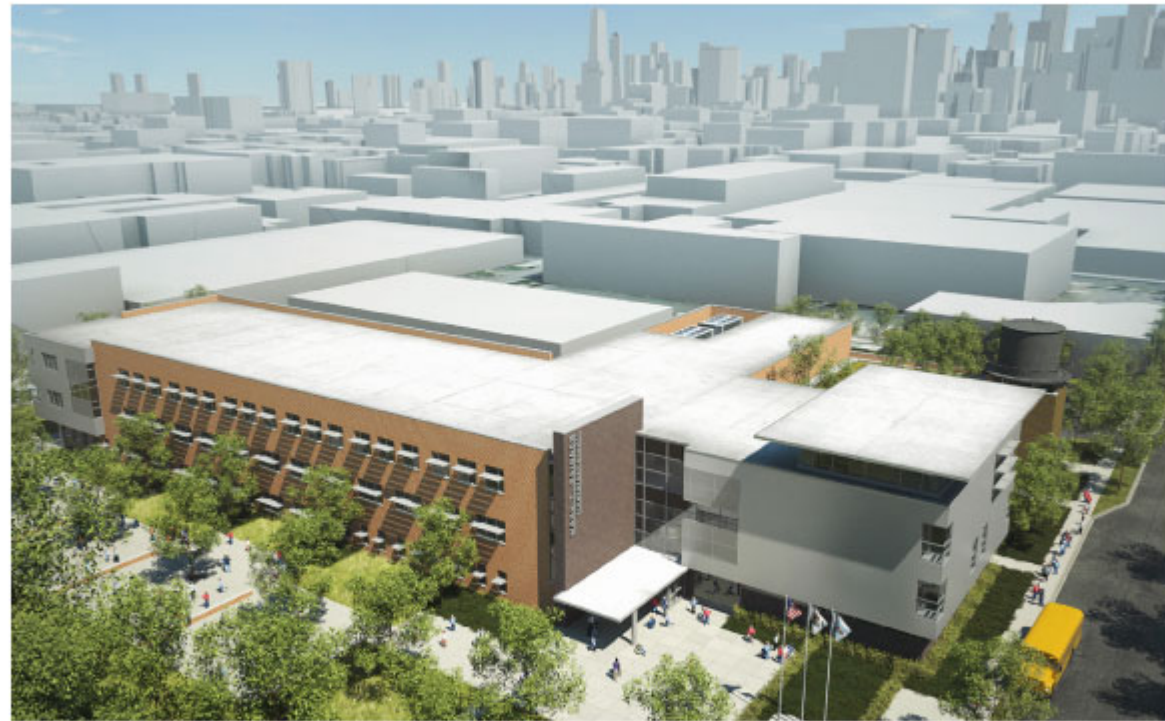


CHICAGO PUBLIC SCHOOLS



Powell Replacement Elementary School

- OPENING
- REMARKS
- DEMOGRAPHICS
- DESIGN** ←
- CONSTRUCTION
- COMMUNITY
- SCHEDULE
- PROGRAMMING
- Q&A



MARK T. SKINNER ELEMENTARY SCHOOL



CHICAGO PUBLIC SCHOOLS



Powell Replacement Elementary School

- OPENING
- REMARKS
- DEMOGRAPHICS
- DESIGN** ←
- CONSTRUCTION
- COMMUNITY
- SCHEDULE
- PROGRAMMING
- Q&A





CHICAGO PUBLIC SCHOOLS



Powell Replacement Elementary School

PROJECT PROGRAM:

- 900 Student Capacity
- 24 Academic Classrooms
- 6 Pre-K / Kindergarten Classrooms
- 2 Multi-Purpose Rooms
- 1 Science Classroom
- 1 Computer Classroom
- 1 Music Classroom
- 1 Art Classroom
- 1 Administrative Center
- 1 Nurses Suite
- 1 Student Services Area
- 1 Library / Resource Center
- 1 Gymnasium
- 1 Student Dining Facility
- 1 Kitchen
- Area for Future Play Lot
- Staff Parking Lot
- Green Roof

OPENING

REMARKS

DEMOGRAPHICS

DESIGN ←

CONSTRUCTION

COMMUNITY

SCHEDULE

PROGRAMMING

Q&A



CHICAGO PUBLIC SCHOOLS



Powell Replacement Elementary School

- OPENING
- REMARKS
- DEMOGRAPHICS
- DESIGN** ←
- CONSTRUCTION
- COMMUNITY
- SCHEDULE
- PROGRAMMING
- Q&A

Powell Replacement Elementary - 75th & South Shore Drive



- Existing Site
- Target TIF Area
- Ward Boundary



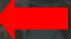
CHICAGO PUBLIC SCHOOLS



Powell Replacement Elementary School

Powell Replacement Elementary - 75th & South Shore Drive



- OPENING
- REMARKS
- DEMOGRAPHICS
- DESIGN 
- CONSTRUCTION
- COMMUNITY
- SCHEDULE
- PROGRAMMING
- Q&A



CHICAGO PUBLIC SCHOOLS



Powell Replacement Elementary School

- OPENING
- REMARKS
- DEMOGRAPHICS
- DESIGN ←
- CONSTRUCTION
- COMMUNITY
- SCHEDULE
- PROGRAMMING
- Q&A



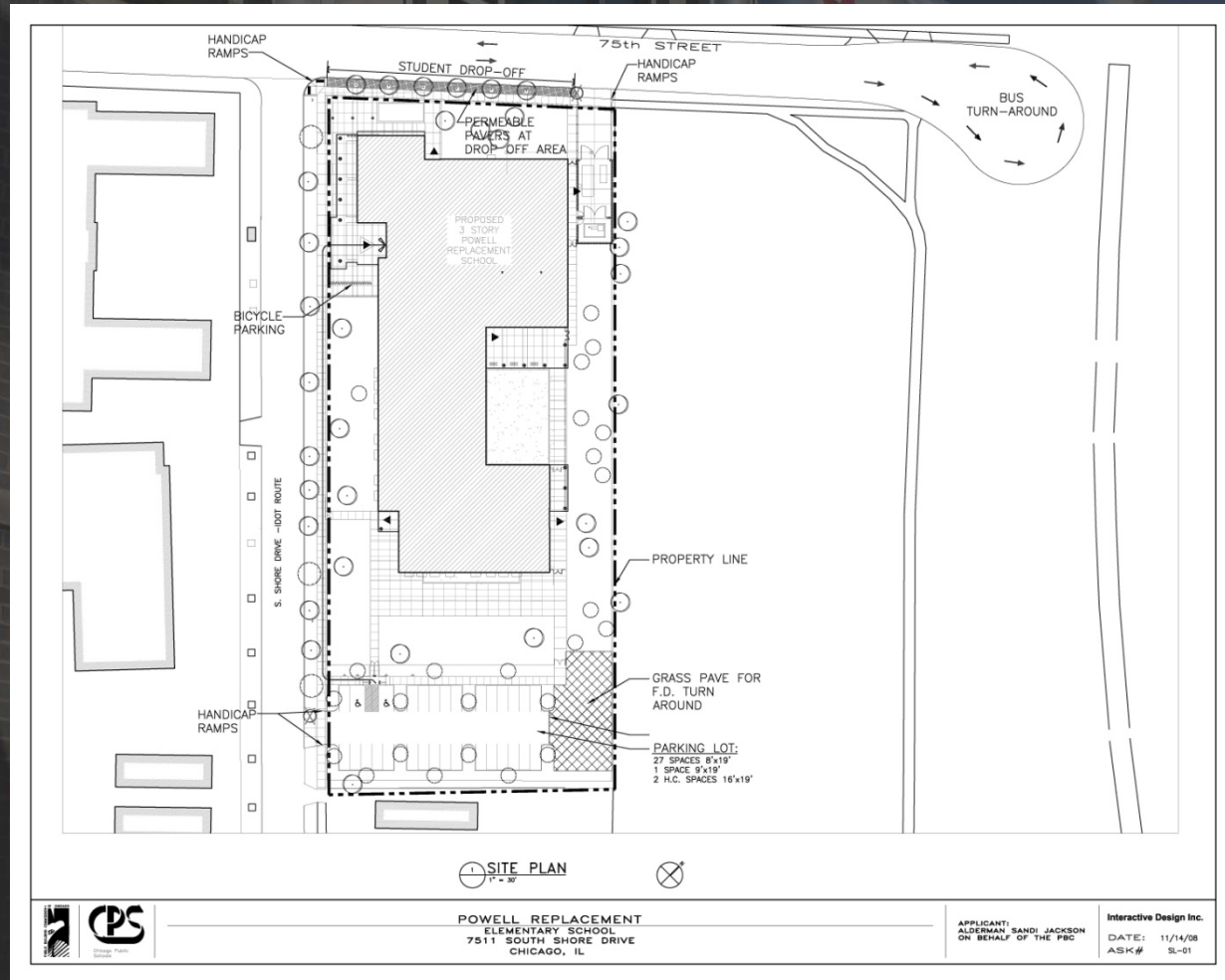


CHICAGO PUBLIC SCHOOLS



Powell Replacement Elementary School

- OPENING
- REMARKS
- DEMOGRAPHICS
- DESIGN ←
- CONSTRUCTION
- COMMUNITY
- SCHEDULE
- PROGRAMMING
- Q&A



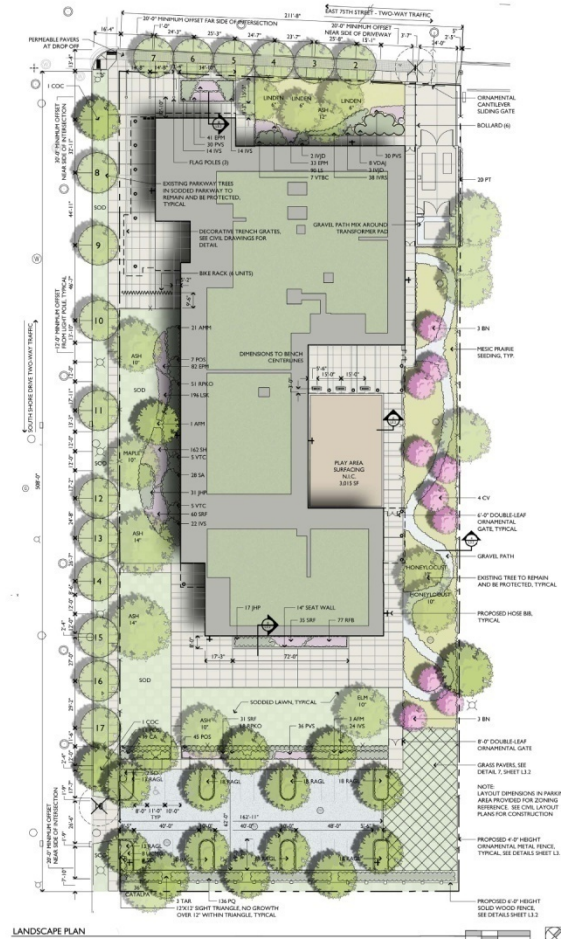


CHICAGO PUBLIC SCHOOLS



Powell Replacement Elementary School

- OPENING
- REMARKS
- DEMOGRAPHICS
- DESIGN** ←
- CONSTRUCTION
- COMMUNITY
- SCHEDULE
- PROGRAMMING
- Q&A



POWELL REPLACEMENT
ELEMENTARY SCHOOL
7511 SOUTH SHORE DRIVE
CHICAGO, IL

APPLICANT:
ALDERMAN SANDI JACKSON
ON BEHALF OF THE PBC

Interactive Design Inc.
DATE: 11-20-08
ASK# L-1

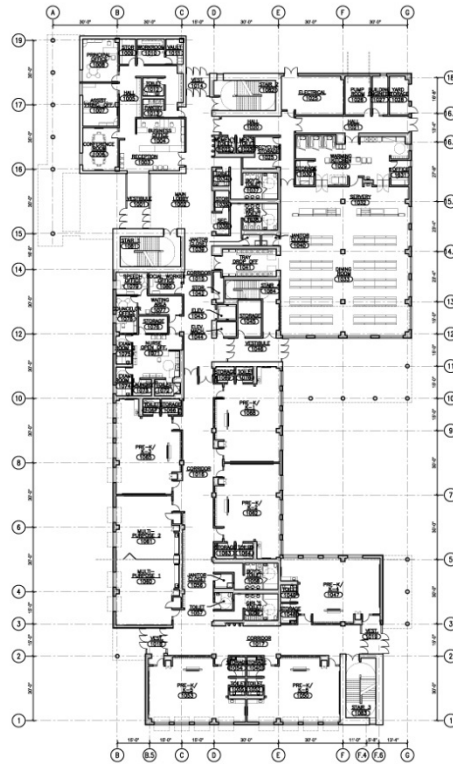


CHICAGO PUBLIC SCHOOLS

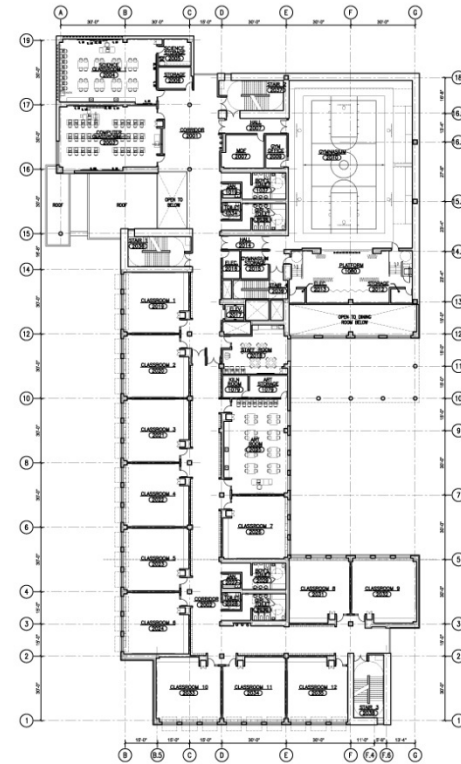


Powell Replacement Elementary School

- OPENING
- REMARKS
- DEMOGRAPHICS
- DESIGN ←
- CONSTRUCTION
- COMMUNITY
- SCHEDULE
- PROGRAMMING
- Q&A



1 FIRST FLOOR PLAN
1" = 20'



2 SECOND FLOOR PLAN
1" = 20'



POWELL REPLACEMENT
ELEMENTARY SCHOOL
7511 SOUTH SHORE DRIVE
CHICAGO, IL

APPLICANT:
ALDERMAN SANDI JACKSON
ON BEHALF OF THE PBC

Interactive Design Inc.
DATE: 11-20-08
ASK# FP-1

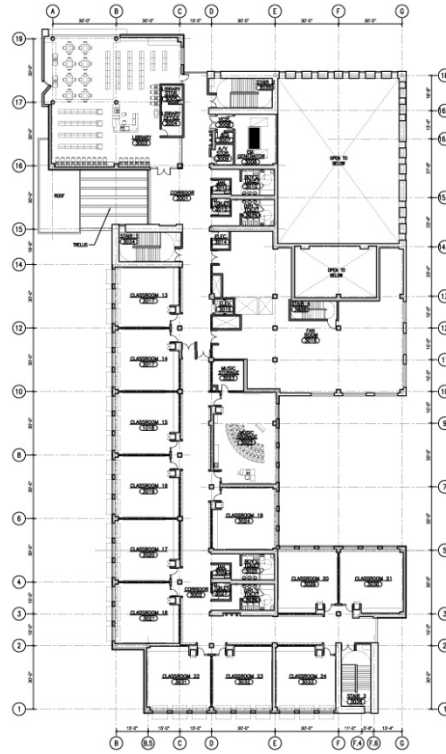


CHICAGO PUBLIC SCHOOLS

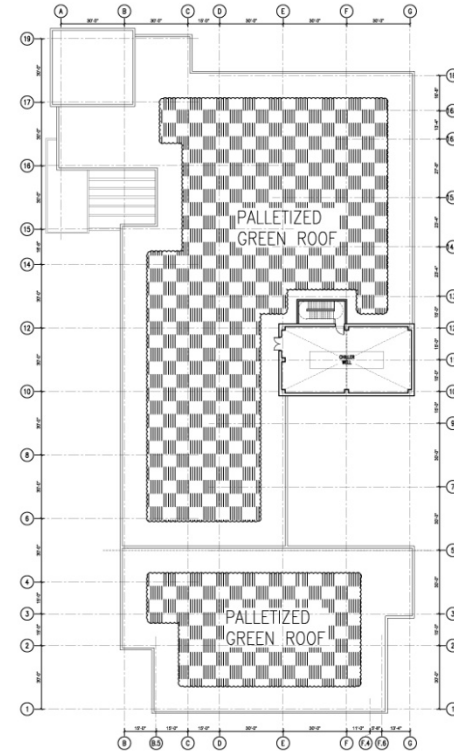


Powell Replacement Elementary School

- OPENING
- REMARKS
- DEMOGRAPHICS
- DESIGN ←
- CONSTRUCTION
- COMMUNITY
- SCHEDULE
- PROGRAMMING
- Q&A



1 THIRD FLOOR PLAN
1" = 8'



2 ROOF PLAN
1" = 8'



POWELL REPLACEMENT
ELEMENTARY SCHOOL
7511 SOUTH SHORE DRIVE
CHICAGO, IL

APPLICANT:
ALDERMAN SANDI JACKSON
ON BEHALF OF THE PBC

Interactive Design Inc.
DATE: 11-20-08
ASK# FP-2



CHICAGO PUBLIC SCHOOLS



Powell Replacement Elementary School

- OPENING
- REMARKS
- DEMOGRAPHICS
- DESIGN ←
- CONSTRUCTION
- COMMUNITY
- SCHEDULE
- PROGRAMMING
- Q&A

WEST ELEVATION

- ALUMINUM WINDOW WALL SYSTEM
- COLOR "X" ALUMINUM PANELS
- PAINTED ALUMINUM FINISH & GRAB STOP
- ALUMINUM SUN SCREEN
- FACE BRICK "Y"
- PAINTED ALUMINUM SCROLLS
- PAINTED CONCRETE COLUMNS

EAST ELEVATION

- FACE BRICK "Y"
- ALUMINUM SUN SCREEN
- ALUMINUM WINDOW WALL SYSTEM
- ALUMINUM WINDOW & SUTURE WITH FIXED & OPERABLE WINDOWS
- PAINTED CONCRETE COLUMNS

NORTH ELEVATION

- FACE BRICK "Y"
- ALUMINUM SUN SCREEN
- ALUMINUM WINDOW AND SUTURE WITH FIXED AND OPERABLE WINDOWS
- PAINTED CONCRETE COLUMNS

SOUTH ELEVATION

- FACE BRICK "Y"
- ALUMINUM SUN SCREEN
- ALUMINUM WINDOW & SUTURE WITH FIXED & OPERABLE WINDOWS
- FACE BRICK "Y"
- PAINTED CONCRETE COLUMNS

NORTH ELEVATION

- FACE BRICK "Y"
- ALUMINUM SUN SCREEN
- ALUMINUM WINDOW AND SUTURE WITH FIXED AND OPERABLE WINDOWS
- PAINTED CONCRETE COLUMNS

SOUTH ELEVATION

- ALUMINUM LEADERS
- FACE BRICK "Y"
- ALUMINUM LEADERS
- PAINTED CONCRETE COLUMNS
- ALUMINUM WINDOW WALL SYSTEM

APPLICANT: ALDERMAN RANDI JACKSON ON BEHALF OF THE CPS
 DATE: 11-20-08
 ASK# E-1



CHICAGO PUBLIC SCHOOLS



Powell Replacement Elementary School

- OPENING
- REMARKS
- DEMOGRAPHICS
- DESIGN ←
- CONSTRUCTION
- COMMUNITY
- SCHEDULE
- PROGRAMMING
- Q&A



POWELL ELEMENTARY SCHOOL



CHICAGO PUBLIC SCHOOLS



Powell Replacement Elementary School

PBC PRESENTATION ON BUILDING CONSTRUCTION

OPENING

REMARKS

DEMOGRAPHICS

DESIGN

CONSTRUCTION ←

COMMUNITY

SCHEDULE

PROGRAMMING

Q&A

EARL MANNING

DEPUTY PROGRAM MANAGER FOR

CONSTRUCTION, PBC



CHICAGO PUBLIC SCHOOLS



Powell Replacement Elementary School

PBC PRESENTATION ON
COMMUNITY RELATIONS AND
HIRING PROVISIONS

OPENING

REMARKS

DEMOGRAPHICS

DESIGN

CONSTRUCTION

COMMUNITY ←

SCHEDULE

PROGRAMMING

Q&A

DEPUTY DIRECTOR OF ADMINISTRATION, PBC

CHARLES KELLY

DWAYNE HIGHTOWER

DEPUTY DIRECTOR FOR COMMUNITY

RELATIONS, PBC



CHICAGO PUBLIC SCHOOLS



Powell Replacement Elementary School

PBC PRESENTATION ON PROJECT
DEVELOPMENT SCHEDULE &
ZONING PROCESS

OPENING

REMARKS

DEMOGRAPHICS

DESIGN

CONSTRUCTION

COMMUNITY

SCHEDULE ←

PROGRAMMING

Q&A

TERRI HAYMAKER
DIRECTOR OF PLANNING, PBC



CHICAGO PUBLIC SCHOOLS



Powell Replacement Elementary School

PROJECT DEVELOPMENT SCHEDULE & ZONING PROCESS:

OPENING

REMARKS

DEMOGRAPHICS

DESIGN

CONSTRUCTION

COMMUNITY

SCHEDULE ←

PROGRAMMING

Q&A

JUNE 15, 2006

DECEMBER 13, 2006

2007

MAY 2008

NOVEMBER 18, 2008

DECEMBER 11, 2008

DECEMBER 18, 2008

JANUARY 2009

JANUARY 2009

MARCH 2009

APRIL 2009

JUNE 2010

JULY-AUGUST 2010

FALL 2010

MODERN SCHOOLS ANNOUNCEMENT ON SITE OF PROPOSED SCHOOL

CITY COUNCIL PASSES PROJECT FUNDING RESOLUTION

PLANNING AND PROTOTYPE DESIGN DEVELOPMENT

PLANNED DEVELOPMENT AND LAKE FRONT APPLICATIONS FILED

COMMUNITY MEETING

CHICAGO PLAN COMMISSION HEARING (1PM CITY HALL)

ZONING COMMITTEE

CITY COUNCIL APPROVAL

ISSUE FOR BID

BUILDING PERMIT ISSUED

CONSTRUCTION START

CONSTRUCTION COMPLETE

LICENSING, OCCUPANCY PERMIT, FURNITURE & EQUIPMENT INSTALL

NEW SCHOOL FACILITY OPENS

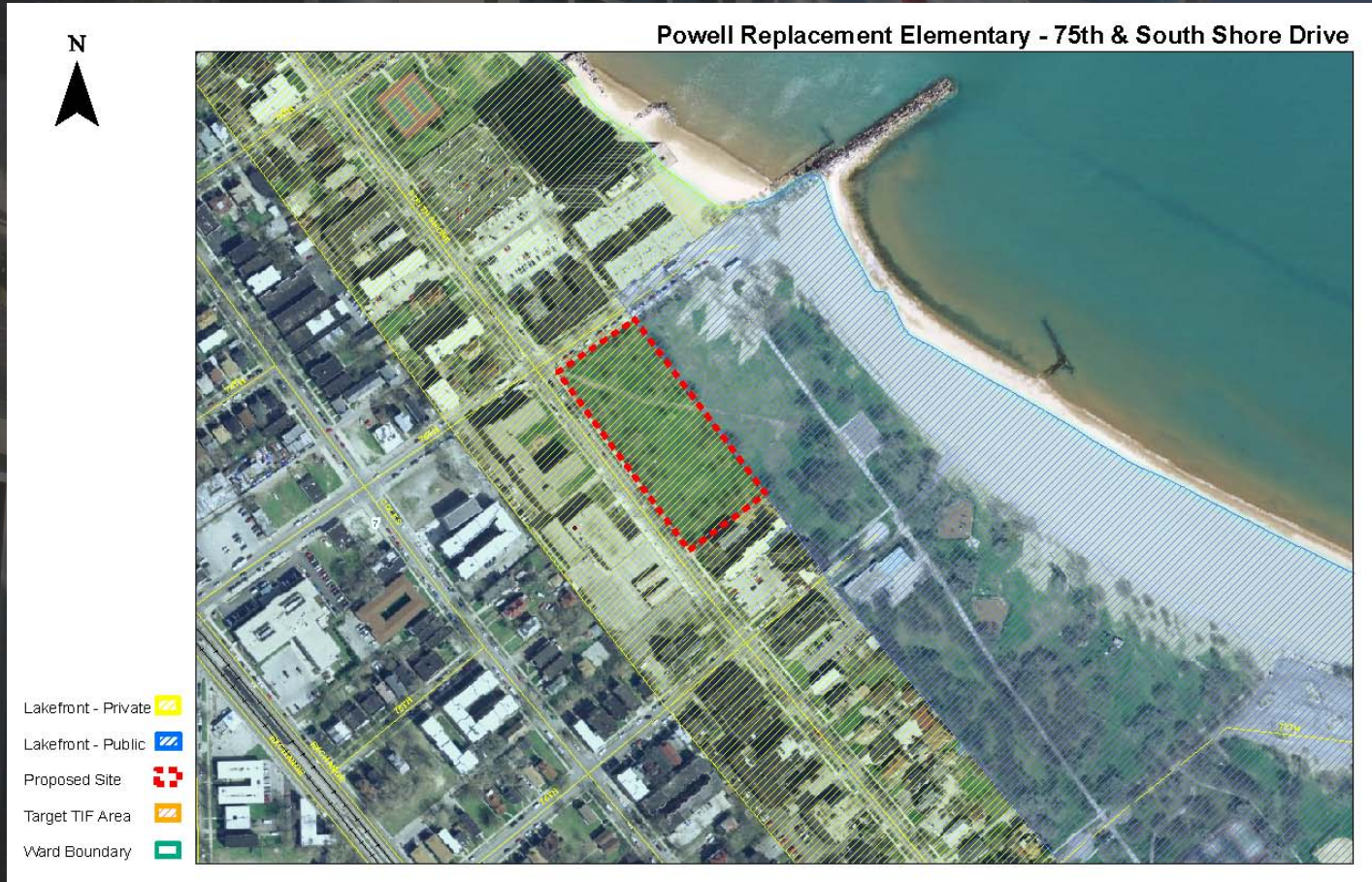


CHICAGO PUBLIC SCHOOLS



Powell Replacement Elementary School

- OPENING
- REMARKS
- DEMOGRAPHICS
- DESIGN
- CONSTRUCTION
- COMMUNITY
- SCHEDULE** ←
- PROGRAMMING
- Q&A





CHICAGO PUBLIC SCHOOLS



Powell Replacement Elementary School

EDUCATIONAL PROGRAMMING

OPENING

REMARKS

DEMOGRAPHICS

DESIGN

CONSTRUCTION

COMMUNITY

SCHEDULE

PROGRAMMING ←

Q&A

DELENA LITTLE

AREA INSTRUCTION OFFICER, AREA 7,

CPS



CHICAGO PUBLIC SCHOOLS



Powell Replacement Elementary School

- OPENING
- REMARKS
- DEMOGRAPHICS
- DESIGN
- CONSTRUCTION
- COMMUNITY
- SCHEDULE
- PROGRAMMING
- Q&A ←

QUESTION & ANSWER