



PUBLIC BUILDING COMMISSION

BOONE CLINTON ELEMENTARY

AGENDA

WELCOME

MICHAEL MOSES, *PRESIDENT, WEST RIDGE COMMUNITY COUNCIL*

REMARKS

BERNARD L. STONE, *ALDERMAN, 50TH WARD*

DEMOGRAPHICS & BOUNDARIES

JIMM DISPENSA, *SCHOOL DEMOGRAPHICS AND PLANNING, CPS*

BUILDING DESIGN

LEONA KETTERL, *DEPUTY DIRECTOR FOR EDUCATION DESIGN, PBC*

COMMUNITY RELATIONS

CHARLES KELLY, *DEPUTY DIRECTOR OF ADMINISTRATION, PBC*
DWAYNE HIGHTOWER, *DEPUTY DIRECTOR FOR COMMUNITY RELATIONS, PBC*

BUILDING CONSTRUCTION

EARL MANNING, *DEPUTY PROGRAM MANAGER FOR CONSTRUCTION, PBC*

PROJECT DEVELOPMENT SCHEDULE

TERRI HAYMAKER, *DIRECTOR OF PLANNING, PBC*

QUESTION AND ANSWER





PUBLIC BUILDING COMMISSION

BOONE CLINTON ELEMENTARY





PUBLIC BUILDING COMMISSION
BOONE CLINTON ELEMENTARY

CPS PRESENTATION ON DEMOGRAPHICS & BOUNDARIES

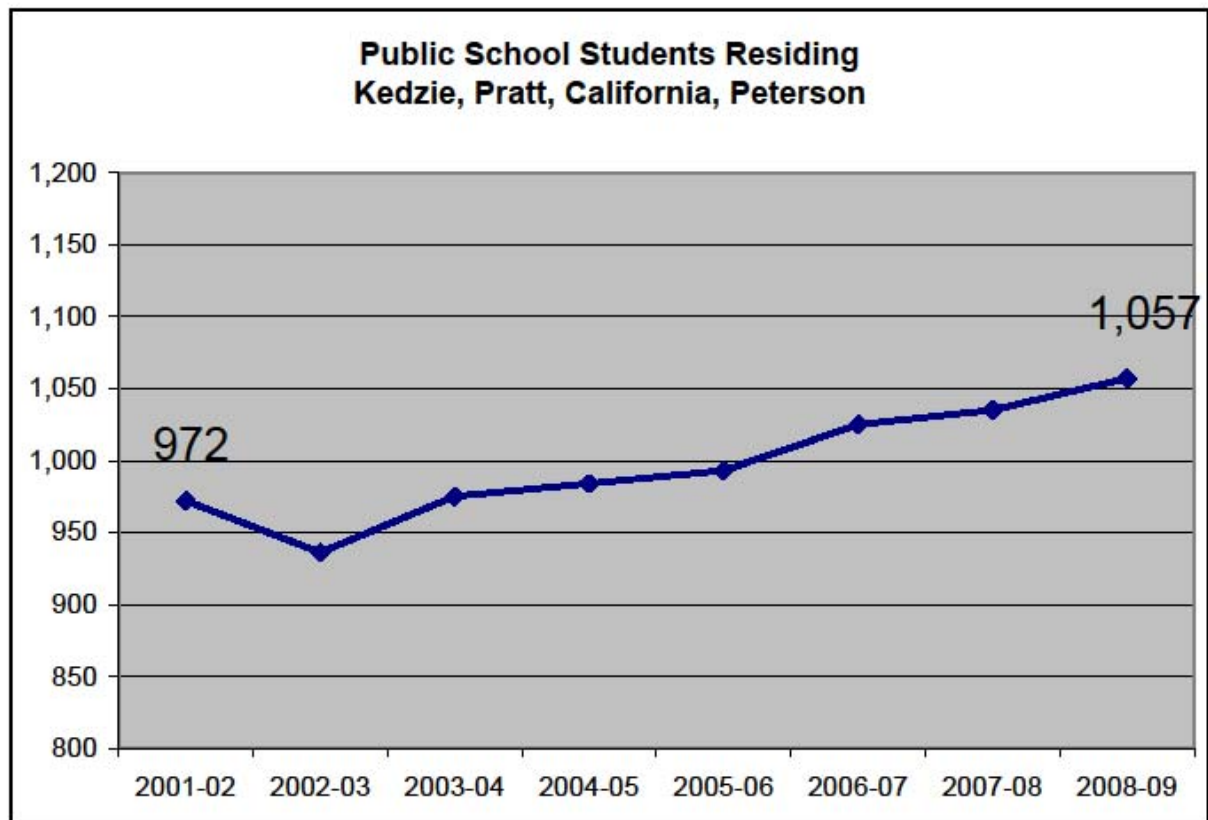
JIMM DISPENSA
*CPS DIRECTOR OF
DEMOGRAPHICS AND PLANNING*





PUBLIC BUILDING COMMISSION

BOONE CLINTON ELEMENTARY





PUBLIC BUILDING COMMISSION
BOONE CLINTON ELEMENTARY

PBC PRESENTATION ON BUILDING DESIGN

LEONA KETTERL, AIA, LEED AP
DEPUTY DIRECTOR for EDUCATION DESIGN, PBC





PUBLIC BUILDING COMMISSION

BOONE CLINTON ELEMENTARY



©2004 James Steinkamp: Steinkamp/Ballogg Photography





PUBLIC BUILDING COMMISSION

BOONE CLINTON ELEMENTARY





PUBLIC BUILDING COMMISSION

BOONE CLINTON ELEMENTARY





PUBLIC BUILDING COMMISSION

BOONE CLINTON ELEMENTARY



©2004 James Steinkamp: Steinkamp/Ballogg Photography



©2004 James Steinkamp: Steinkamp/Ballogg Photography





PUBLIC BUILDING COMMISSION

BOONE CLINTON ELEMENTARY



©2004 James Steinkamp: Steinkamp/Ballogg Photography



©2004 James Steinkamp: Steinkamp/Ballogg Photography





PUBLIC BUILDING COMMISSION

BOONE CLINTON ELEMENTARY



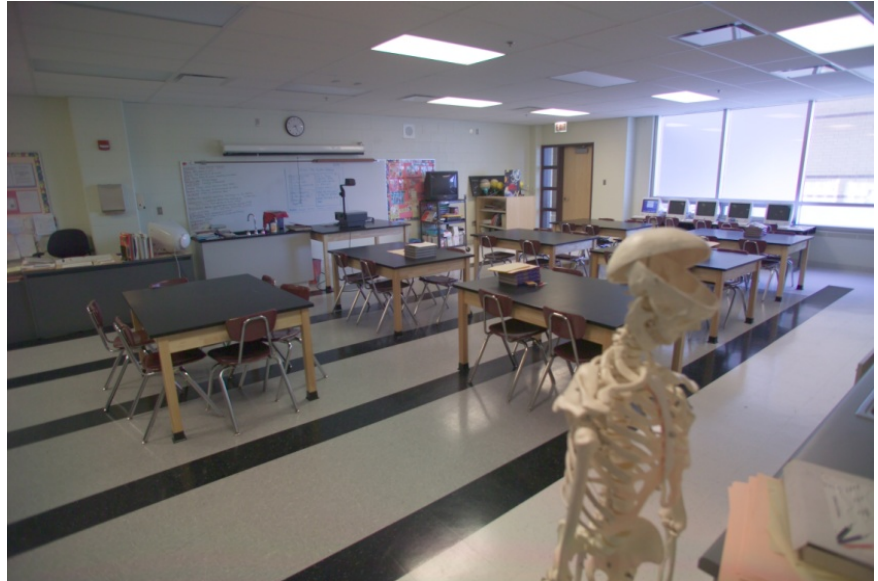
©2004 James Steinkamp: Steinkamp/Ballogg Photography





PUBLIC BUILDING COMMISSION

BOONE CLINTON ELEMENTARY





PUBLIC BUILDING COMMISSION

BOONE CLINTON ELEMENTARY



©2004 James Steinkamp: Steinkamp/Ballogg Photography





PUBLIC BUILDING COMMISSION

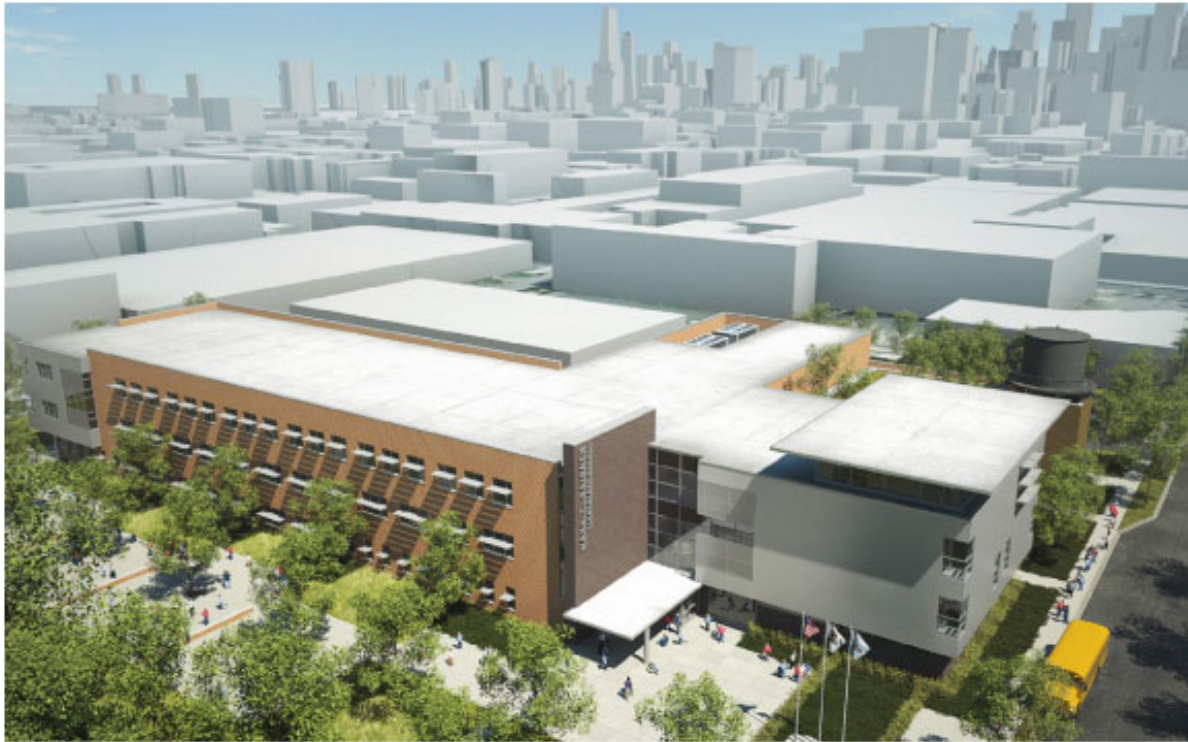
BOONE CLINTON ELEMENTARY





PUBLIC BUILDING COMMISSION

BOONE CLINTON ELEMENTARY



MARK T. SKINNER ELEMENTARY SCHOOL





PUBLIC BUILDING COMMISSION

BOONE CLINTON ELEMENTARY





PUBLIC BUILDING COMMISSION

BOONE CLINTON ELEMENTARY

PROJECT PROGRAM:

- 900 Student Capacity
- 24 Academic Classrooms
- 6 Pre-K / Kindergarten Classrooms
- 2 Multi-Purpose Rooms
- 1 Science Classroom
- 1 Computer Classroom
- 1 Music Classroom
- 1 Art Classroom
- 1 Administrative Center
- 1 Nurses Suite
- 1 Student Services Area
- 1 Library / Resource Center
- 1 Gymnasium
- 1 Student Dining Facility
- 1 Kitchen
- Area for Future Play Lot
- Off-Site Parking Lot for 30 Spaces
- 50% Green Roof





PUBLIC BUILDING COMMISSION

BOONE CLINTON ELEMENTARY



AERIAL PHOTO

BOONE CLINTON ELEMENTARY
6700 N. WHIPPLE STREET
CHICAGO, IL 60645

THE CITY OF CHICAGO • RICHARD M. DALEY, MAYOR



INSTITUTIONAL PLANNED DEVELOPMENT
Applicant: Public Building Commission of Chicago
& Alderman Bernard L. Stone
October 16, 2008

MULLER+MULLER
architects





PUBLIC BUILDING COMMISSION

BOONE CLINTON ELEMENTARY



VIEW NORTH - WHIPPLE STREET



VIEW SOUTH - WHIPPLE STREET



VIEW NORTH - RESIDENTIAL



VIEW NORTHEAST - RESIDENTIAL



VIEW EAST - RESIDENTIAL



VIEW SOUTHEAST - RESIDENTIAL



VIEW SOUTH - CENTER OF SITE



VIEW SOUTH - RESIDENTIAL



VIEW SOUTHWEST - CENTER OF SITE



VIEW SOUTHWEST - RESIDENTIAL



VIEW SOUTHWEST - PEOPLE'S GAS



VIEW WEST - CENTER OF SITE

SITE PHOTOS

BOONE CLINTON ELEMENTARY
6700 N. WHIPPLE STREET
CHICAGO, IL 60645

THE CITY OF CHICAGO • RICHARD M. DALEY, MAYOR

INSTITUTIONAL PLANNED DEVELOPMENT
Applicant: Public Building Commission of Chicago
& Alderman Bernard L. Stone
October 16, 2008

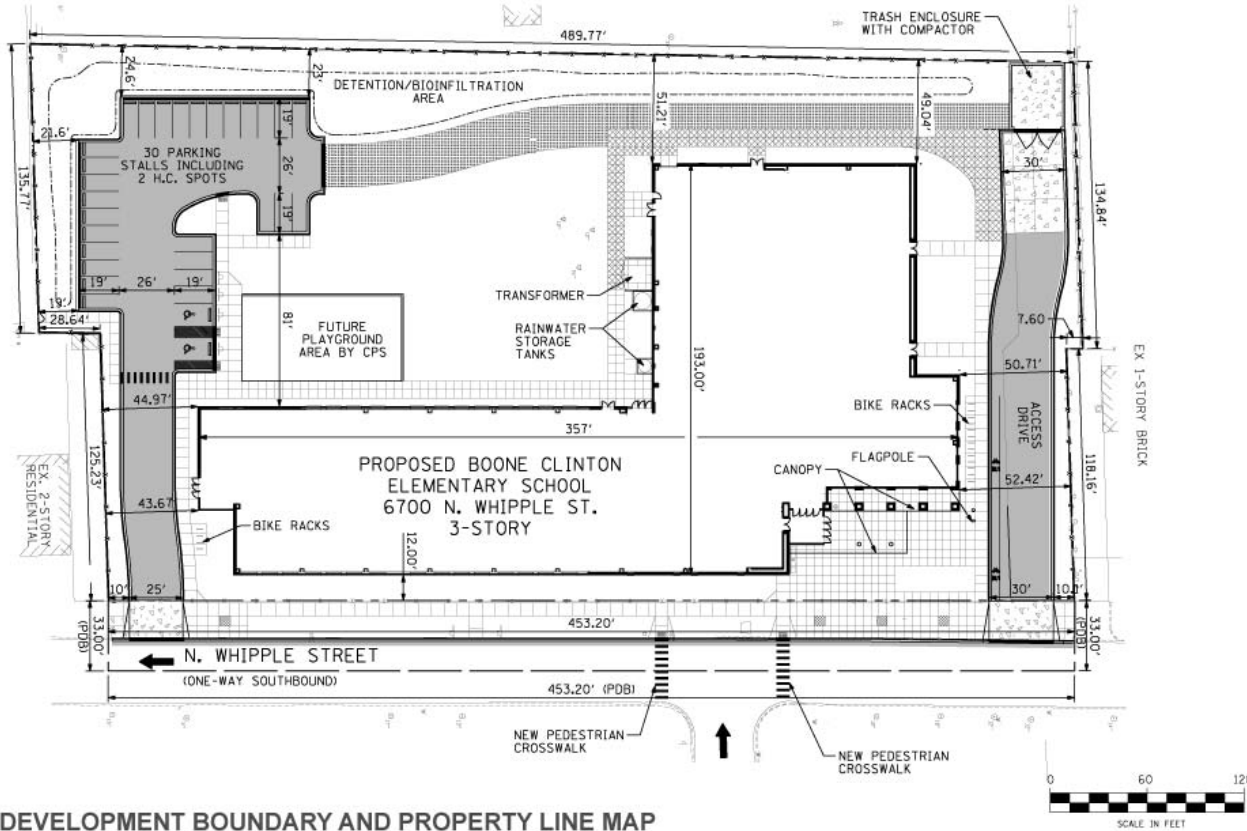
MULLER+MULLER
architects





PUBLIC BUILDING COMMISSION

BOONE CLINTON ELEMENTARY



PLANNED DEVELOPMENT BOUNDARY AND PROPERTY LINE MAP

BOONE CLINTON ELEMENTARY
6700 N. WHIPPLE STREET
CHICAGO, IL 60645

THE CITY OF CHICAGO • RICHARD M. DALEY, MAYOR

INSTITUTIONAL PLANNED DEVELOPMENT
Applicant: Public Building Commission of Chicago
& Alderman Bernard L. Stone
October 16, 2008

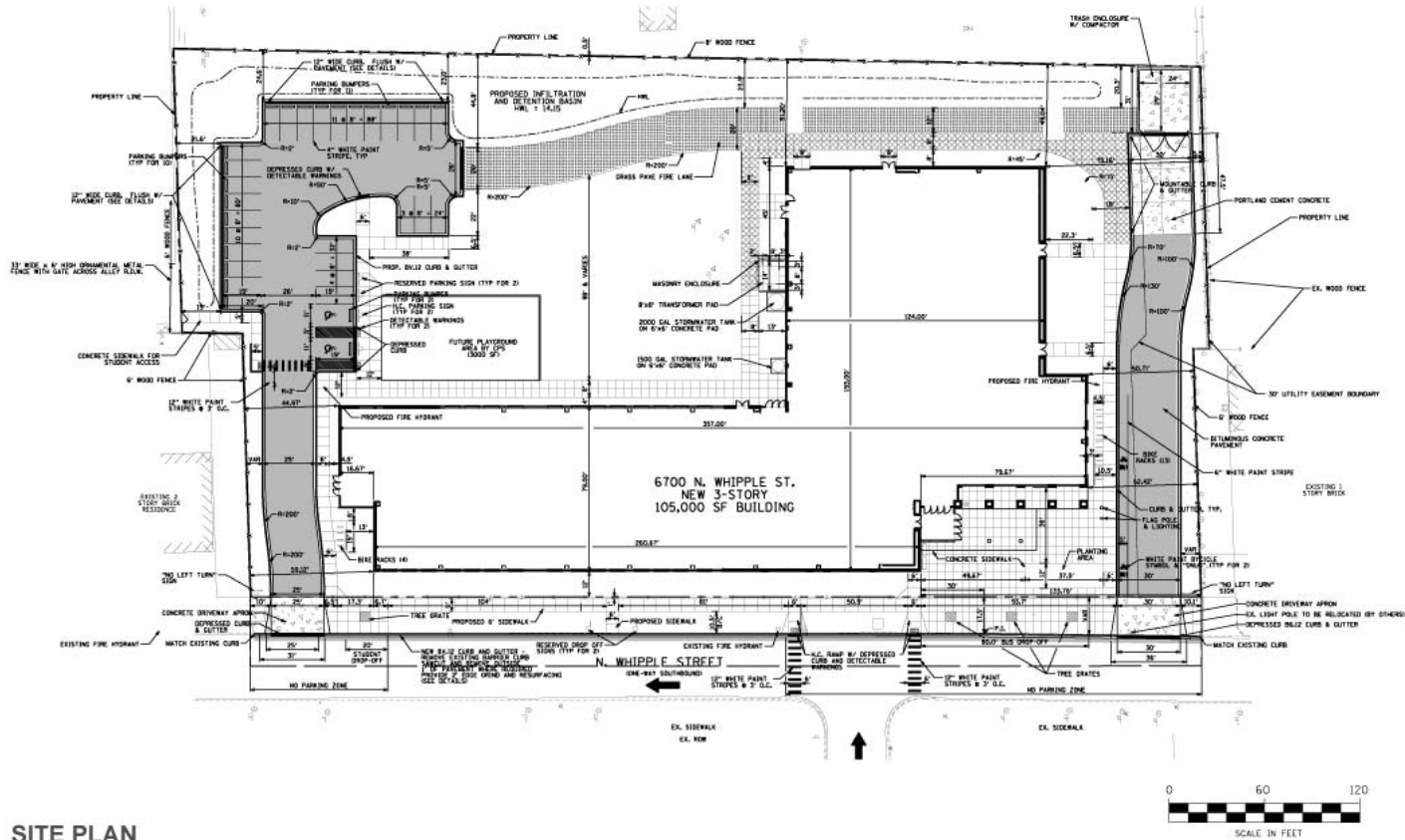
MULLER+MULLER
architects





PUBLIC BUILDING COMMISSION

BOONE CLINTON ELEMENTARY



SITE PLAN

BOONE CLINTON ELEMENTARY
 6700 N. WHIPPLE STREET
 CHICAGO, IL 60645

THE CITY OF CHICAGO • RICHARD M. DALEY, MAYOR

INSTITUTIONAL PLANNED DEVELOPMENT
 Applicant: Public Building Commission of Chicago
 & Alderman Bernard L. Stone
 October 16, 2008



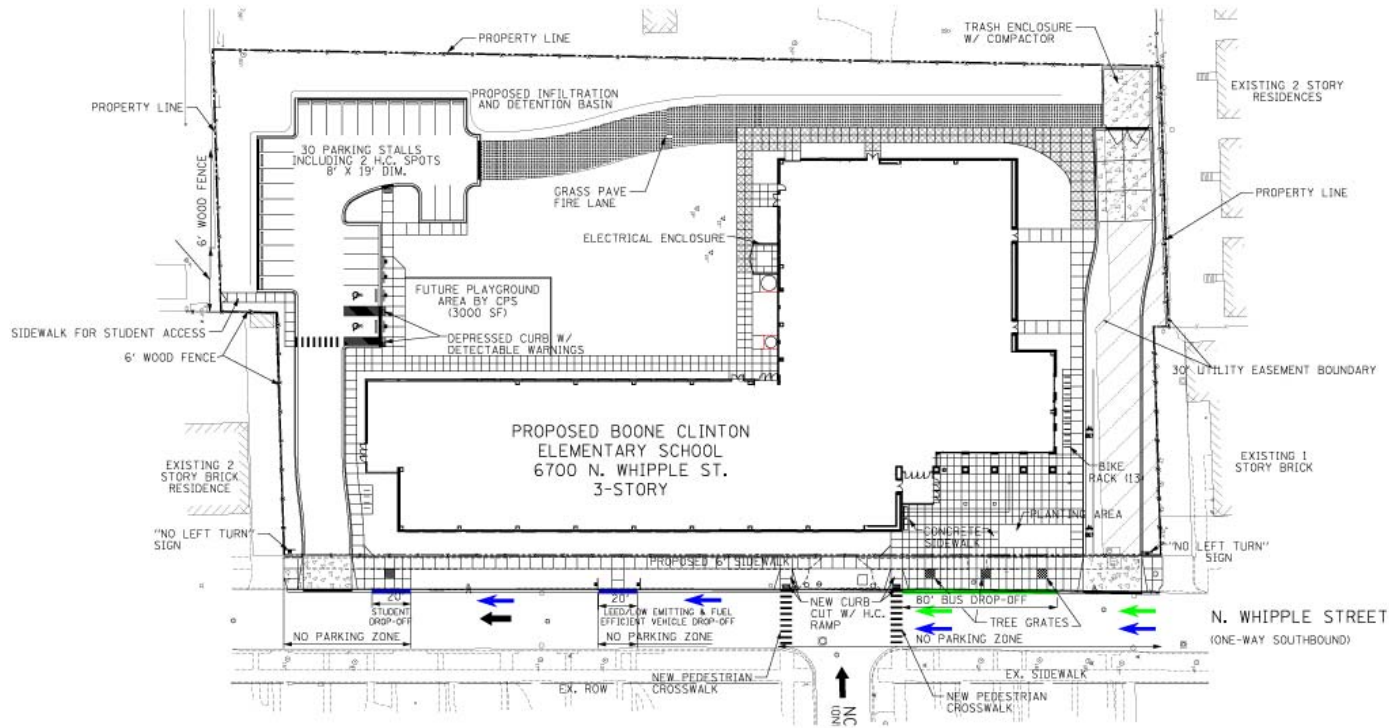
MULLER+MULLER
 architects





PUBLIC BUILDING COMMISSION

BOONE CLINTON ELEMENTARY



DROP OFF PLAN

BOONE CLINTON ELEMENTARY
6700 N. WHIPPLE STREET
CHICAGO, IL 60645

THE CITY OF CHICAGO • RICHARD M. DALEY, MAYOR

INSTITUTIONAL PLANNED DEVELOPMENT
Applicant: Public Building Commission of Chicago
& Alderman Bernard L. Stone
October 16, 2008

MULLER+MULLER
architects





PUBLIC BUILDING COMMISSION

BOONE CLINTON ELEMENTARY



LANDSCAPE PLAN

BOONE CLINTON ELEMENTARY
6700 N. WHIPPLE STREET
CHICAGO, IL 60645

THE CITY OF CHICAGO • RICHARD M. DALEY, MAYOR

INSTITUTIONAL PLANNED DEVELOPMENT
Applicant: Public Building Commission of Chicago
& Alderman Bernard L. Stone
October 16, 2008

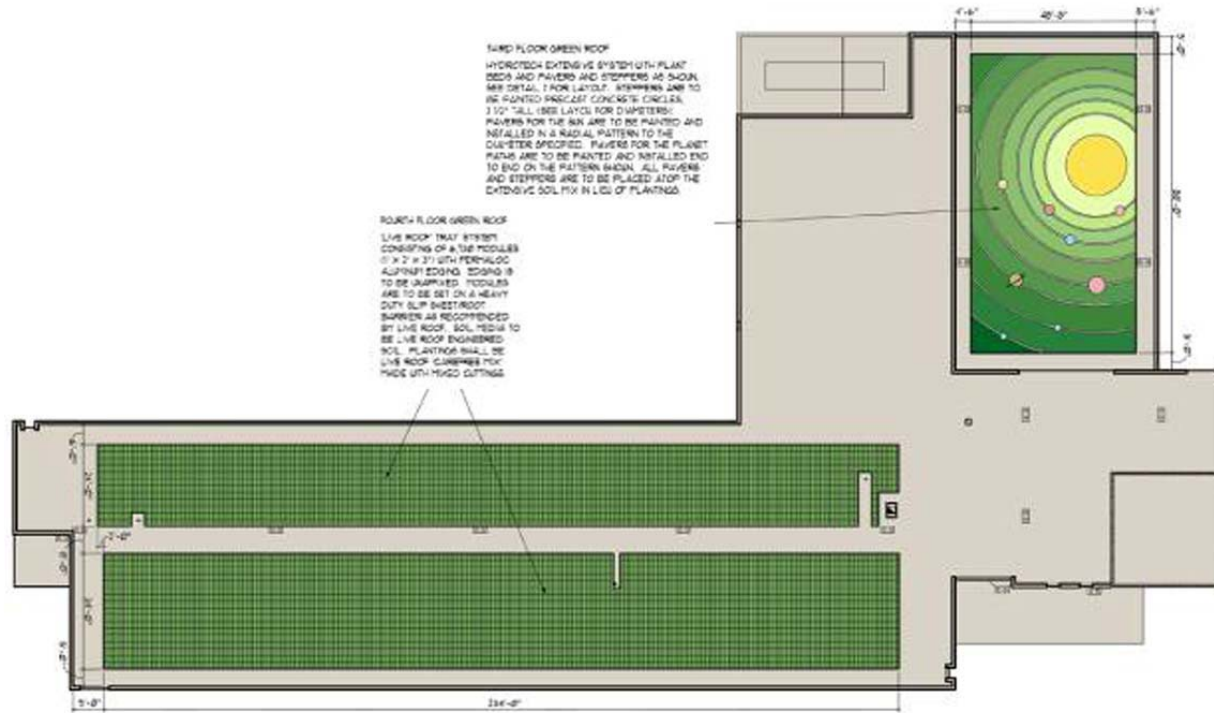
MULLER+MULLER
architects





PUBLIC BUILDING COMMISSION

BOONE CLINTON ELEMENTARY



GREEN ROOF PLAN

BOONE CLINTON ELEMENTARY
6700 N. WHIPPLE STREET
CHICAGO, IL 60645

THE CITY OF CHICAGO • RICHARD M. DALEY, MAYOR

INSTITUTIONAL PLANNED DEVELOPMENT
Applicant: Public Building Commission of Chicago
& Alderman Bernard L. Stone
October 16, 2008

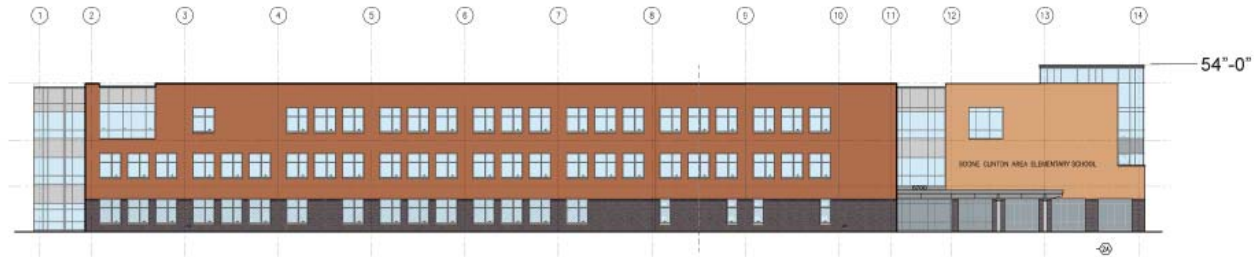
MULLER+MULLER
architects



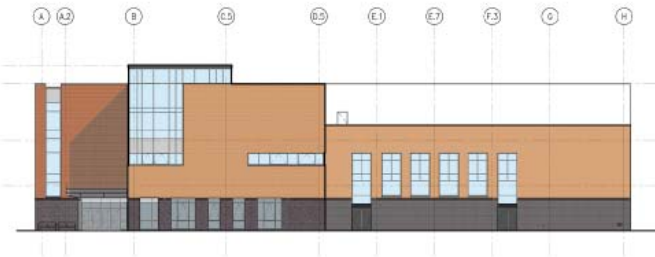


PUBLIC BUILDING COMMISSION

BOONE CLINTON ELEMENTARY



1 EAST ELEVATION
1/16" = 1'-0"



2 NORTH ELEVATION
1/16" = 1'-0"

BUILDING ELEVATIONS

BOONE CLINTON ELEMENTARY
6700 N. WHIPPLE STREET
CHICAGO, IL 60645

THE CITY OF CHICAGO • RICHARD M. DALEY, MAYOR

INSTITUTIONAL PLANNED DEVELOPMENT
Applicant: Public Building Commission of Chicago
& Alderman Bernard L. Stone
October 16, 2008

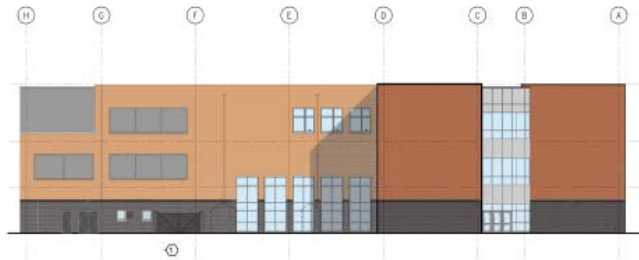
MULLER+MULLER
architects





PUBLIC BUILDING COMMISSION

BOONE CLINTON ELEMENTARY



3 SOUTH ELEVATION
ASL 1/16" = 1'-0"



4 WEST ELEVATION
ASL 1/16" = 1'-0"

BUILDING ELEVATIONS

BOONE CLINTON ELEMENTARY
6700 N. WHIPPLE STREET
CHICAGO, IL 60645

THE CITY OF CHICAGO • RICHARD M. DALEY, MAYOR

INSTITUTIONAL PLANNED DEVELOPMENT
Applicant: Public Building Commission of Chicago
& Alderman Bernard L. Stone
October 16, 2008

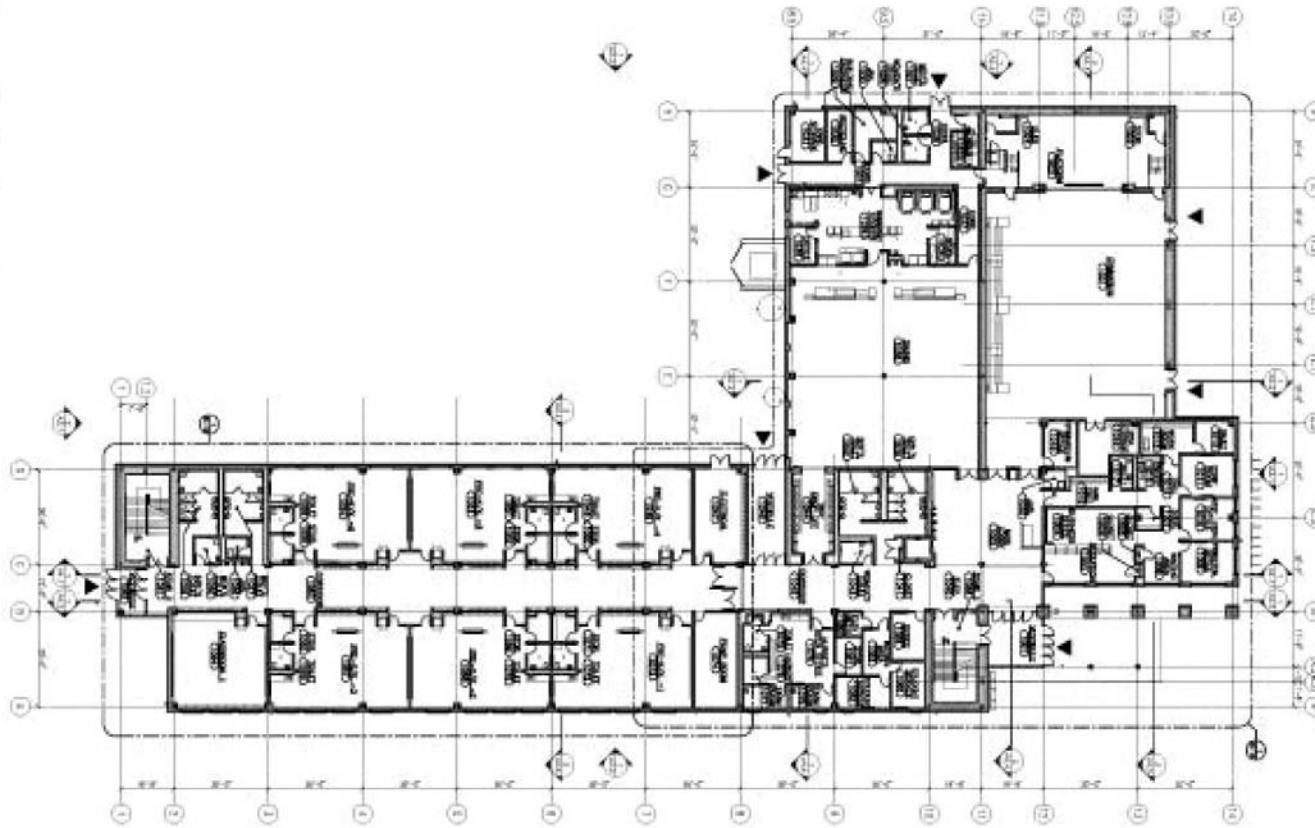
MULLER+MULLER
architects





PUBLIC BUILDING COMMISSION

BOONE CLINTON ELEMENTARY



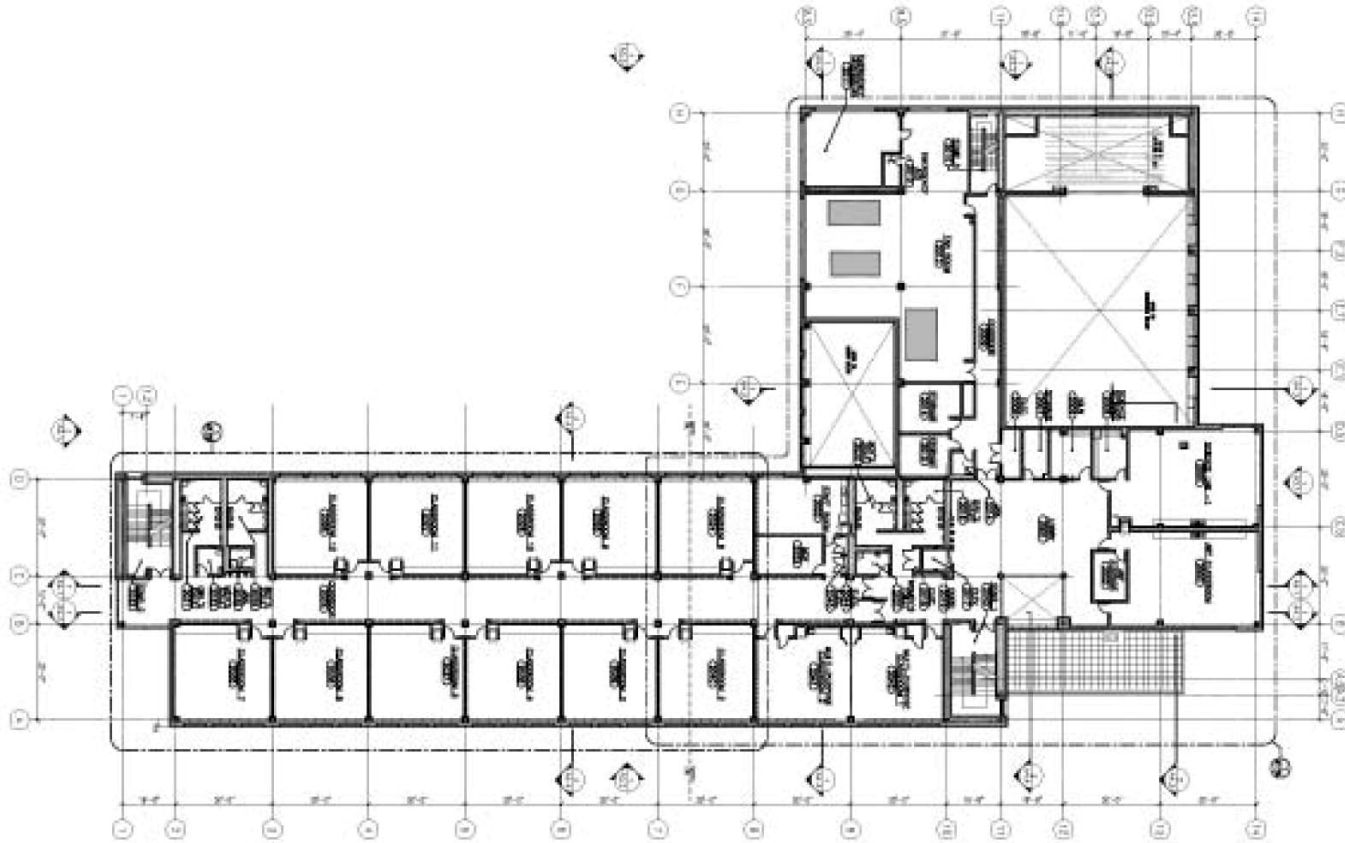
First Floor





PUBLIC BUILDING COMMISSION

BOONE CLINTON ELEMENTARY



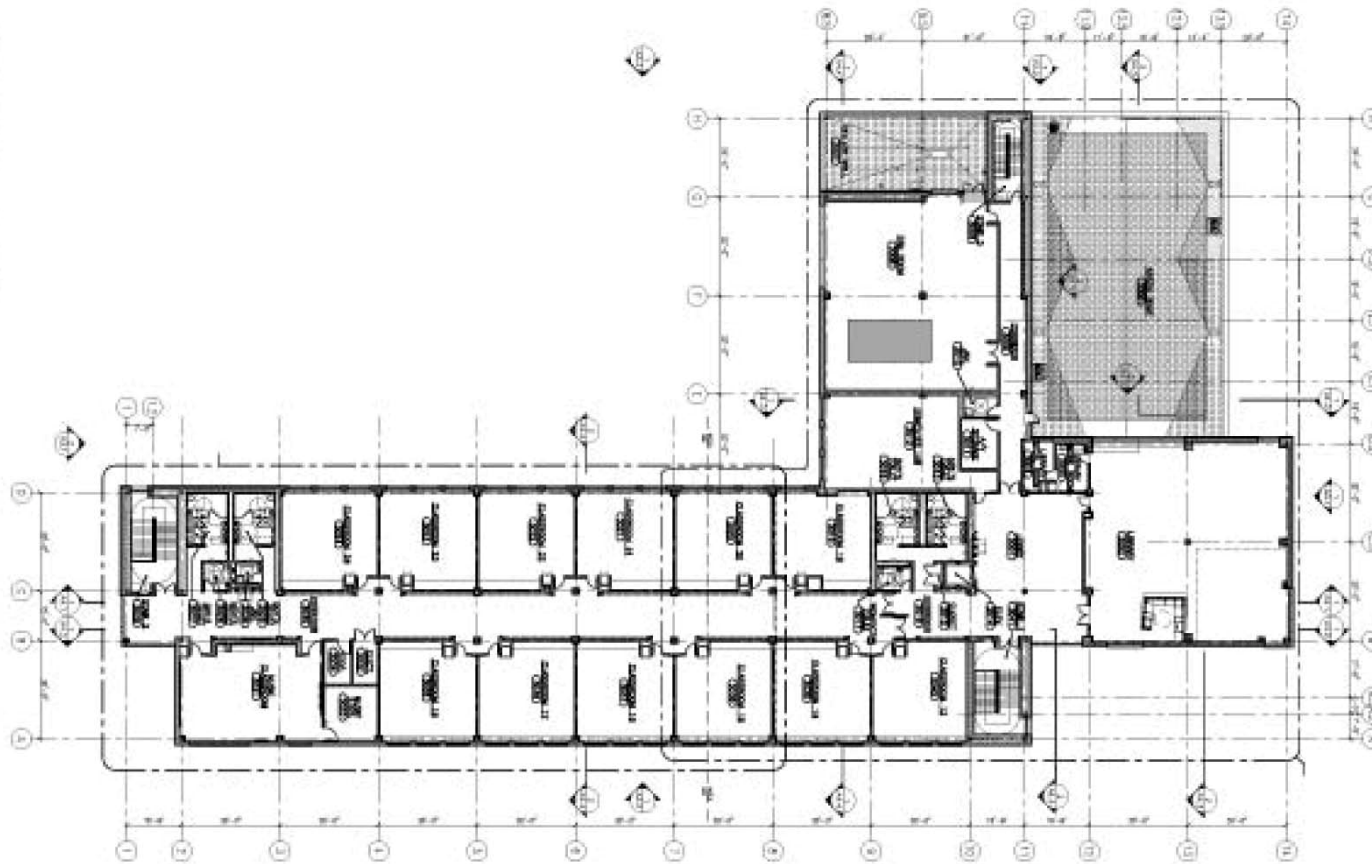
Second Floor





PUBLIC BUILDING COMMISSION

BOONE CLINTON ELEMENTARY



Third Floor





PUBLIC BUILDING COMMISSION
BOONE CLINTON ELEMENTARY

PBC PRESENTATION ON COMMUNITY RELATIONS AND HIRING PROVISIONS

CHARLES KELLY

DEPUTY DIRECTOR OF ADMINISTRATION, PBC

DWAYNE HIGHTOWER

DEPUTY DIRECTOR FOR COMMUNITY RELATIONS, PBC





PUBLIC BUILDING COMMISSION
BOONE CLINTON ELEMENTARY

PBC PRESENTATION ON BUILDING CONSTRUCTION

EARL MANNING
*DEPUTY PROGRAM MANAGER
FOR CONSTRUCTION, PBC*





PUBLIC BUILDING COMMISSION
BOONE CLINTON ELEMENTARY

PBC PRESENTATION ON PROJECT DEVELOPMENT SCHEDULE

TERRI HAYMAKER
DIRECTOR OF PLANNING, PBC





PUBLIC BUILDING COMMISSION

BOONE CLINTON ELEMENTARY

PROJECT DEVELOPMENT SCHEDULE:

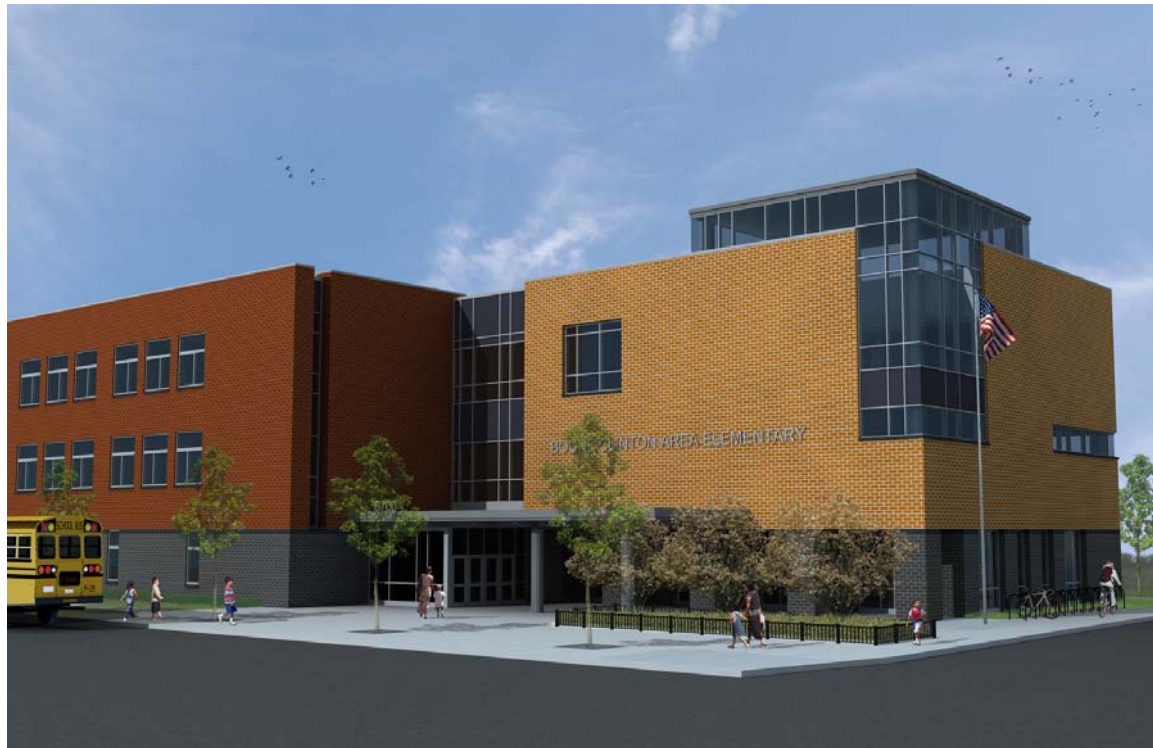
JANUARY 24, 2001	CPS DESIGNATION OF SITE
SEPTEMBER 30, 2004	CPS PURCHASED SITE
JUNE 15, 2006	MODERN SCHOOLS ACROSS CHICAGO ANNOUNCEMENT
DECEMBER 13, 2006	CITY COUNCIL PASSES PROJECT FUNDING RESOLUTION
SUMMER 2007	INITIAL BUILDING SITE TEST FIT & DESIGN DEVELOPMENT
JULY 9, 2008	PLANNED DEVELOPMENT APPLICATION FILED
OCTOBER 16, 2008	CHICAGO PLAN COMMISSION HEARING
OCTOBER 21, 2008	ZONING COMMITTEE APPROVES PLANNED DEVELOPMENT
NOVEMBER 5, 2008	CITY COUNCIL APPROVES PLANNED DEVELOPMENT
DECEMBER 16, 2008	ISSUE FOR BID
MARCH 2009	BUILDING PERMIT ISSUED (TENTATIVE)
MARCH 2009	CONSTRUCTION START (TENTATIVE)
JUNE 28, 2010	CONSTRUCTION COMPLETE (TENTATIVE)
JULY-AUGUST	LICENSING, OCCUPANCY PERMIT, FURNITURE & EQUIPMENT INSTALL (TENTATIVE)
SEPTEMBER 2010	NEW SCHOOL FACILITY OPENS (TENTATIVE)





PUBLIC BUILDING COMMISSION

BOONE CLINTON ELEMENTARY



QUESTION & ANSWER

