



PUBLIC BUILDING COMMISSION OF CHICAGO

SAUGANASH ELEMENTARY SCHOOL ADDITION





PUBLIC BUILDING COMMISSION OF CHICAGO
SAUGANASH ELEMENTARY SCHOOL ADDITION

WELCOME

CHRISTINE MUNNS,
PRINCIPAL,
SAUGANASH ELEMENTARY SCHOOL



PUBLIC BUILDING COMMISSION OF CHICAGO

SAUGANASH ELEMENTARY SCHOOL ADDITION

REMARKS

MARGARET LAURINO,
ALDERMAN 39TH WARD



PUBLIC BUILDING COMMISSION OF CHICAGO

SAUGANASH ELEMENTARY SCHOOL ADDITION

AGENDA

INTRODUCTIONS &
BUILDING DESIGN

ERIN LAVIN CABONARGI, *EXECUTIVE DIRECTOR, PBC*

QUESTION AND ANSWER

MARGARET LAURINO, ALDERMAN, *39TH WARD*



PUBLIC BUILDING COMMISSION OF CHICAGO

SAUGANASH ELEMENTARY SCHOOL ADDITION

PBC PRESENTATION ON BUILDING DESIGN

ERIN LAVIN CABONARGI
EXECUTIVE DIRECTOR, PBC



PUBLIC BUILDING COMMISSION OF CHICAGO

SAUGANASH ELEMENTARY SCHOOL ADDITION

Sauganash School - 6040 N. Kilpatrick



- Proposed Site 
- Target TIF Area 
- Ward Boundary 



PUBLIC BUILDING COMMISSION OF CHICAGO

SAUGANASH ELEMENTARY SCHOOL ADDITION





PUBLIC BUILDING COMMISSION OF CHICAGO

SAUGANASH ELEMENTARY SCHOOL ADDITION





PUBLIC BUILDING COMMISSION OF CHICAGO

SAUGANASH ELEMENTARY SCHOOL ADDITION



©2004 James Steinkamp: Steinkamp/Ballogg Photography



PUBLIC BUILDING COMMISSION OF CHICAGO

SAUGANASH ELEMENTARY SCHOOL ADDITION





PUBLIC BUILDING COMMISSION OF CHICAGO

SAUGANASH ELEMENTARY SCHOOL ADDITION





PUBLIC BUILDING COMMISSION OF CHICAGO

SAUGANASH ELEMENTARY SCHOOL ADDITION





PUBLIC BUILDING COMMISSION OF CHICAGO

SAUGANASH ELEMENTARY SCHOOL ADDITION



©2005 James Steinkamp: jim@steinkampballogg.com



PUBLIC BUILDING COMMISSION OF CHICAGO

SAUGANASH ELEMENTARY SCHOOL ADDITION



©2004 James Steinkamp, Steinkamp/Balogg Photography



PUBLIC BUILDING COMMISSION OF CHICAGO

SAUGANASH ELEMENTARY SCHOOL ADDITION





PUBLIC BUILDING COMMISSION OF CHICAGO

SAUGANASH ELEMENTARY SCHOOL ADDITION





PUBLIC BUILDING COMMISSION OF CHICAGO

SAUGANASH ELEMENTARY SCHOOL ADDITION



©2004 James Steinkamp: Steinkamp/Ballogg Photography



©2004 James Steinkamp: Steinkamp/Ballogg Photography



PUBLIC BUILDING COMMISSION OF CHICAGO

SAUGANASH ELEMENTARY SCHOOL ADDITION





PUBLIC BUILDING COMMISSION OF CHICAGO

SAUGANASH ELEMENTARY SCHOOL ADDITION

PROJECT PROGRAM:

Existing Building:

- 23,637 SF
- 11 Classrooms
- Library
- Gymnasium
- Administrative Suite

New Addition:

- 42,154 SF
- 12 Classrooms
- 1 Science Lab
- Kitchen and Dining Facility

Green Roof:





- 37.4% of Existing roof & New Addition roof area
- 62% of New Addition roof area only

PUBLIC BUILDING COMMISSION OF CHICAGO

SAUGANASH ELEMENTARY SCHOOL ADDITION

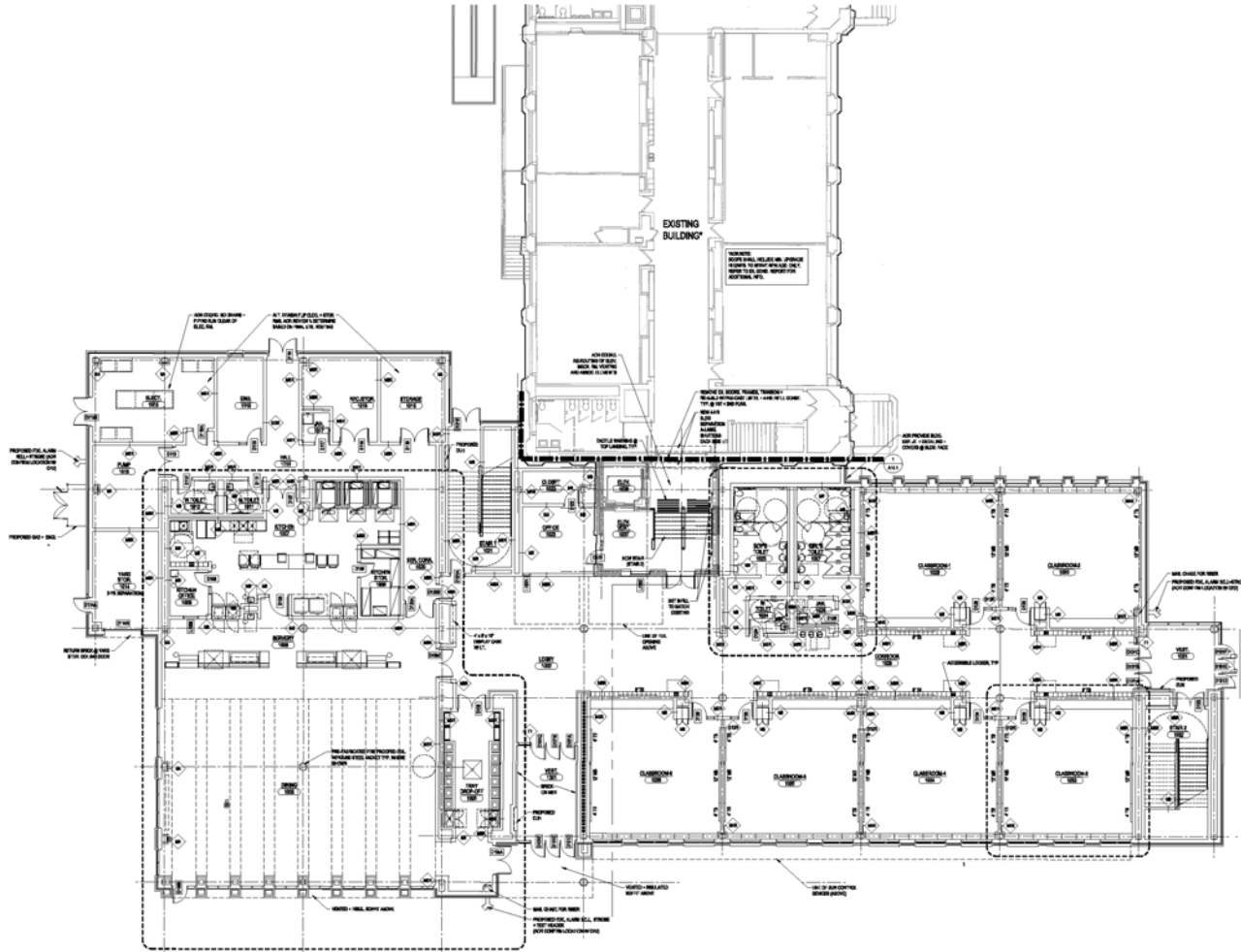


Proposed Logistics

-  Existing Structures
-  Existing Modularity
-  Temporary Modularity (TBD by CPS)
-  Addition

PUBLIC BUILDING COMMISSION OF CHICAGO

SAUGANASH ELEMENTARY SCHOOL ADDITION



FIRST FLOOR



PUBLIC BUILDING COMMISSION OF CHICAGO

SAUGANASH ELEMENTARY SCHOOL ADDITION

PROJECT DEVELOPMENT SCHEDULE:

FEBRUARY 3, 2009	PROJECT FORMULATION REQUEST SENT FROM CPS TO PBC
JUNE 17, 2009	PRELIMINARY DESIGN WORK COMPLETE
FEBRUARY 24, 2010	COMMUNITY MEETING
APRIL 2010	DESIGN COMPLETE & REQUEST TO CPS FOR AUTHORITY TO BID
3 MONTH DURATION	PROCUREMENT PROCESS & AWARD RECOMMENDATION FOR PBC BOARD APPROVAL
18 MONTH DURATION	CONSTRUCTION BY PBC & FURNITURE, FIXTURES & EQUIPMENT BY CPS



PUBLIC BUILDING COMMISSION OF CHICAGO

SAUGANASH ELEMENTARY SCHOOL ADDITION

Commitment to Sustainable Development for the Environment

- Diversion of construction waste from landfills
- Utilization of recycled materials in construction
- Green roofs
- Enhanced natural light
- Solar-powered features
- High efficiency heating and cooling systems
- Low flow/low consumption water usage
- Responsible landscaping
- Aggressive stormwater management



PUBLIC BUILDING COMMISSION OF CHICAGO SAUGANASH ELEMENTARY SCHOOL ADDITION

Commitment to Economic Sustainability Programs for the Community

- Programs Include:
 - Bid incentives for the employment of apprentices
 - Bid incentives for the employment of minority and female workers
 - Contract provisions that require at least 50% of the labor force be residents of the City of Chicago.
 - Contract provisions with regard for community hiring, helping to employ those closest to the work at hand
 - Contract provisions that require minority- and women-owned business participation



PUBLIC BUILDING COMMISSION OF CHICAGO

SAUGANASH ELEMENTARY SCHOOL ADDITION



QUESTION & ANSWER