



# PUBLIC BUILDING COMMISSION OF CHICAGO

## ENGINE COMPANY 16





PUBLIC BUILDING COMMISSION OF CHICAGO  
ENGINE COMPANY 16



## PBC Presentation

PROJECT OVERVIEW

TERRI HAYMAKER, *DIRECTOR OF PLANNING, PBC*

BUILDING DESIGN

JIM GALLAGHER, *PROJECT MANAGER, PBC*

ECONOMIC SUSTAINABILITY PROVISIONS

CHUCK KELLY, *DEPUTY DIRECTOR OF ADMINISTRATION, PBC*



PUBLIC BUILDING COMMISSION OF CHICAGO  
ENGINE COMPANY 16

---



## PROJECT OVERVIEW

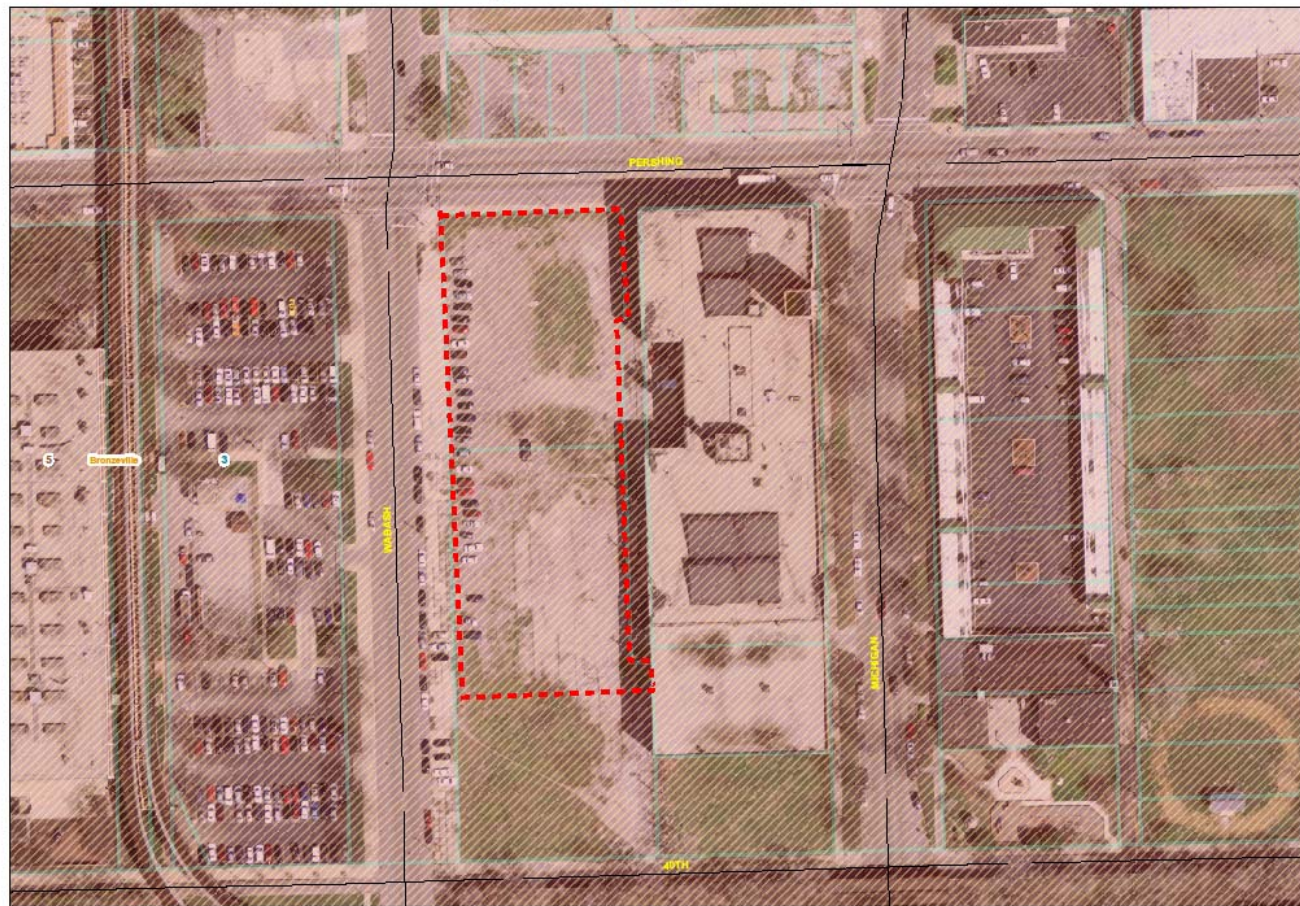
TERRI HAYMAKER  
*DIRECTOR OF PLANNING, PBC*





# PUBLIC BUILDING COMMISSION OF CHICAGO

## ENGINE COMPANY 16



- Proposed Site 
- TIF District 
- Ward Boundary 



# PUBLIC BUILDING COMMISSION OF CHICAGO

## ENGINE COMPANY 16



### PROJECT DEVELOPMENT SCHEDULE:

2009-APRIL 2010

PLANNING PHASE

MARCH 2010

FUNDING SOURCES IDENTIFIED

9 MONTH DURATION

DESIGN PHASE

6 MONTH DURATION

SITE PREPARATION

15 MONTH DURATION

MAIN BUILDING CONSTRUCTION



PUBLIC BUILDING COMMISSION OF CHICAGO  
ENGINE COMPANY 16

---



## BUILDING DESIGN

JIM GALLAGHER  
*PROJECT MANAGER, PBC*





# PUBLIC BUILDING COMMISSION OF CHICAGO

## ENGINE COMPANY 16





# PUBLIC BUILDING COMMISSION OF CHICAGO

## ENGINE COMPANY 16







# PUBLIC BUILDING COMMISSION OF CHICAGO

## ENGINE COMPANY 16





# PUBLIC BUILDING COMMISSION OF CHICAGO

## ENGINE COMPANY 16

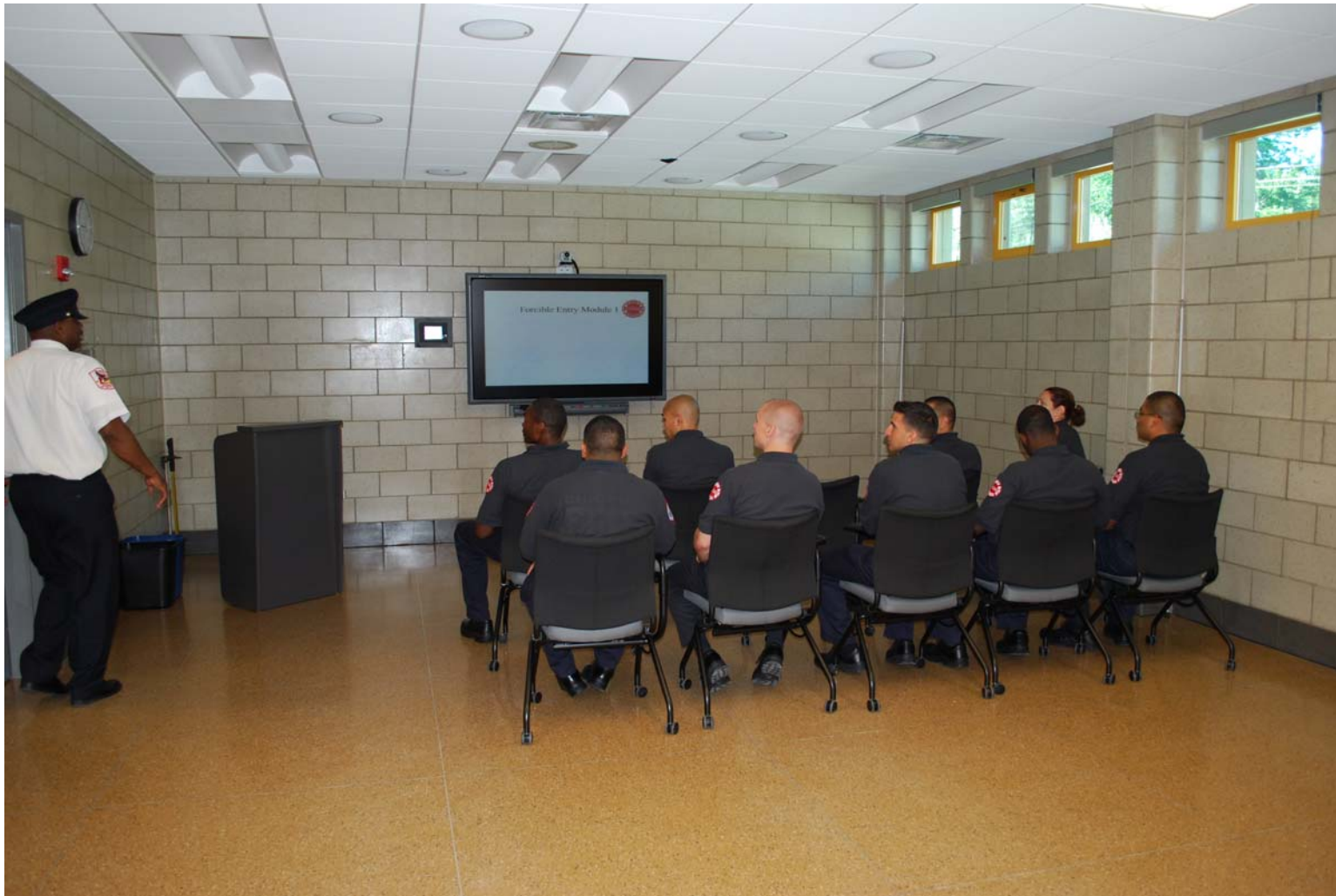






# PUBLIC BUILDING COMMISSION OF CHICAGO

## ENGINE COMPANY 16





# PUBLIC BUILDING COMMISSION OF CHICAGO

## ENGINE COMPANY 16







# PUBLIC BUILDING COMMISSION OF CHICAGO

## ENGINE COMPANY 16





# PUBLIC BUILDING COMMISSION OF CHICAGO

## ENGINE COMPANY 16





PUBLIC BUILDING COMMISSION OF CHICAGO  
ENGINE COMPANY 16



# ECONOMIC SUSTAINABILITY PROVISIONS

CHUCK KELLY  
*DEPUTY DIRECTOR OF ADMINISTRATION, PBC*





PUBLIC BUILDING COMMISSION OF CHICAGO  
ENGINE COMPANY 16



## Commitment to Economic Sustainability Programs for the Community

- Programs Include:
  - Contract provisions that require minority- and women-owned business participation
  - Contract provisions with regard for community hiring, helping to employ those closest to the work at hand
  - Contract provisions that require at least 50% of the labor force be residents of the City of Chicago.
  - Bid incentives for the employment of minority and female workers
  - Bid incentives for the employment of apprentices





# PUBLIC BUILDING COMMISSION OF CHICAGO

## ENGINE COMPANY 16



# Question & Answer