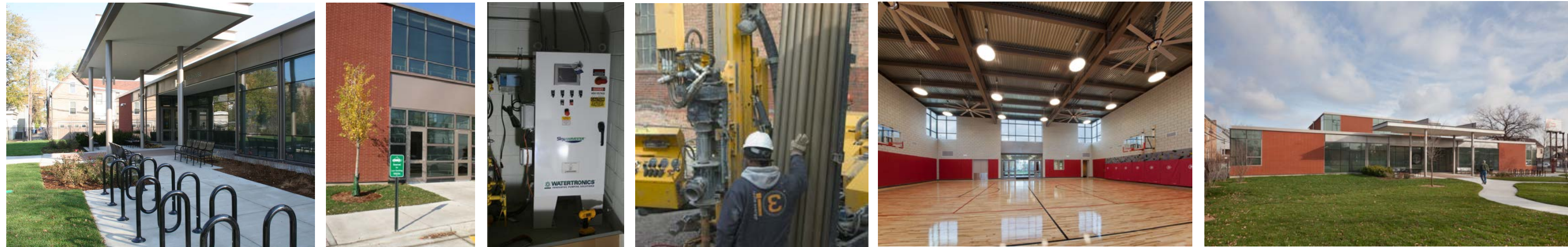


SUSTAINABILITY STRATEGY

Haas Park Field House
2402 North Washtenaw Street



Available Goal SUSTAINABLE SITES	Available Goal WATER EFFICIENCY	Available Goal ENERGY & ATMOSPHERE	Available Goal MATERIALS & RESOURCES	Available Goal INDOOR ENVIRONMENTAL QUALITY	Available Goal INNOVATION & DESIGN PROCESS
<ul style="list-style-type: none"> Y R Construction Activity Pollution Prevention 1 1 Site Selection 5 5 Development Density & Community Connectivity X 1 Brownfield Redevelopment 6 6 Alternative Transportation, Public Transportation Access 1 1 Alternative Transportation, Bicycle Storage & Changing Rooms 3 3 Alternative Transportation, Low-Emitting & Fuel-Efficient Vehicles 2 2 Alternative Transportation, Parking Capacity X 1 Site Development: Protect or Restore Habitat 1 1 Site Development: Maximize Open Space 1 1 Stormwater Design, Quantity Control 1 1 Stormwater Design, Quality Control 1 1 Heat Island Effect, Non-Roof 1 1 Heat Island Effect, Roof 1 1 Light Pollution Reduction <p>SUBTOTAL: 24 of 26 possible</p>	<ul style="list-style-type: none"> Y R Water Use Reduction 20% 2 2 Water Efficient Landscaping, Reduce potable water use by 50% 2 2 Water Efficient Landscaping, No Potable Use or No Irrigation 2 2 Innovative Wastewater Technologies 2 2 Water Use Reduction, 30% Reduction 1 1 Water Use Reduction, 35% Reduction X 1 Water Use Reduction 40% Reduction <p>SUBTOTAL: 9 of 10 possible</p>	<ul style="list-style-type: none"> Y R Fundamental Commissioning of the Building Energy Systems Y R Minimum Energy Performance Y R Fundamental Refrigerant Management 8 19 Optimize Energy Performance: by 30% X 7 On-Site Renewable Energy, 1%, 3%, 5%, 7%, 9%, 11%, 13% 2 2 Enhanced Commissioning 2 2 Enhanced Refrigerant Management X 3 Measurement & Verification 2 2 Green Power <p>SUBTOTAL: 14 of 35 possible</p>	<ul style="list-style-type: none"> Y R Storage & Collection of Recyclables X 3 Building Reuse, Maintain Existing Walls, Floors and Roof, 55%, 75%, 95% X 1 Building Reuse – Maintain Interior Nonstructural Elements 1 1 Construction Waste Management, Divert 50% from Disposal 1 1 Construction Waste Management, Divert 75% from Disposal X 1 Materials Reuse, 5% X 1 Materials Reuse, 10% 1 1 Recycled Content, 10%, (post-consumer + ½ post-industrial) 1 1 Recycled Content, 20% (post-consumer + ½ post-industrial) 1 1 Regional Materials, 10% Extracted, Processed & Manufactured Regionally 1 1 Regional Materials, 20% Extracted, Processed & Manufactured Regionally X 1 Rapidly Renewable Materials 1 1 Certified Wood <p>SUBTOTAL: 7 of 14 possible</p>	<ul style="list-style-type: none"> Y R Minimum IAQ Performance Y R Environmental Tobacco Smoke (ETS) Control X 1 Outdoor Air Delivery Monitoring X 1 Increased Ventilation 1 1 Construction IAQ Management Plan, During Construction X 1 Construction IAQ Management Plan, Before Occupancy Low-Emitting Materials: <ul style="list-style-type: none"> 1 1 Adhesives & Sealants 1 1 Paints & Coatings 1 1 Flooring Systems 1 1 Composite Wood & Agrifiber Products X 1 Indoor Chemical & Pollutant Source Control 1 1 Controllability of Systems, Lighting X 1 Controllability of Systems, Thermal Comfort 1 1 Thermal Comfort, Design X 1 Thermal Comfort, Verification X 1 Daylight & Views, Daylight 75% of Regularly Occupied Spaces X 1 Daylight & Views, Views for 90% of Regularly Occupied Spaces <p>SUBTOTAL: 7 of 15 possible</p>	<ul style="list-style-type: none"> X 1 Innovation in Design: 100% Green Power X 1 Innovation in Design: Green Cleaning or IPM 1 1 Innovation in Design: Exemplary Regional Materials 1 1 Innovation in Design: Exemplary Open Space 1 1 Innovation in Design: Exemplary Innovative Wastewater Use 1 1 LEED™ Accredited Professional <p style="text-align: center;">REGIONAL PRIORITY</p> <ul style="list-style-type: none"> 1 1 Regional Priority: Public Transit Access 1 1 Regional Priority: Maximize open space 1 1 Regional Priority: Stormwater Quality design 1 1 Regional Priority: Stormwater Quantity design <p>SUBTOTAL: 10 of 10 possible</p>

Certified: 40-49 points, Silver: 50-59 points, Gold: 60-79 points, Platinum: 80+ points



Johnson & Lee, Ltd.
828 South Wabash Avenue, Suite 210
Chicago, Illinois 60605
P: 312.663.0225 x14
F: 312.663.4491

Project Phase: Occupied
Target Rating: LEED 2009 **Gold**
Target Credits: **68**
Date of Registration: 4/29/10
Date of Issue: 7/31/13