



PUBLIC BUILDING COMMISSION OF CHICAGO

MT. GREENWOOD ELEMENTARY SCHOOL LINKED ANNEX





PUBLIC BUILDING COMMISSION OF CHICAGO

MT. GREENWOOD ELEMENTARY SCHOOL LINKED ANNEX

WELCOME

CATHERINE REIDY,
PRINCIPAL,

MT. GREENWOOD ELEMENTARY SCHOOL



PUBLIC BUILDING COMMISSION OF CHICAGO

MT. GREENWOOD ELEMENTARY SCHOOL LINKED ANNEX

REMARKS

VIRGINIA A. RUGAI,
19TH WARD ALDERMAN, CITY OF CHICAGO



PUBLIC BUILDING COMMISSION OF CHICAGO

MT. GREENWOOD ELEMENTARY SCHOOL LINKED ANNEX

AGENDA

WELCOME

CATHERINE REIDY, *PRINCIPAL, MT. GREENWOOD ELEMENTARY SCHOOL*

REMARKS

VIRGINIA RUGAI, *19TH WARD ALDERMAN, CITY OF CHICAGO*

INTRODUCTIONS

JOSE ALVAREZ, *OFFICER, CPS*

BUILDING DESIGN

LEONA KETTERL, *DEPUTY DIRECTOR FOR EDUCATION DESIGN, PBC*

QUESTION AND ANSWER

VIRGINIA RUGAI, *19TH WARD ALDERMAN, CITY OF CHICAGO*



PUBLIC BUILDING COMMISSION OF CHICAGO

MT. GREENWOOD ELEMENTARY SCHOOL LINKED ANNEX

PBC PRESENTATION ON BUILDING DESIGN

LEONA KETTERL,
DEPUTY DIRECTOR FOR EDUCATION DESIGN, PBC

PUBLIC BUILDING COMMISSION OF CHICAGO

MT. GREENWOOD ELEMENTARY SCHOOL LINKED ANNEX

Mt. Greenwood Elementary School: 10841 S. Homan



- Proposed Site 
- TIF District 
- Ward Boundary 



PUBLIC BUILDING COMMISSION OF CHICAGO

MT. GREENWOOD ELEMENTARY SCHOOL LINKED ANNEX





PUBLIC BUILDING COMMISSION OF CHICAGO

MT. GREENWOOD ELEMENTARY SCHOOL LINKED ANNEX





PUBLIC BUILDING COMMISSION OF CHICAGO

MT. GREENWOOD ELEMENTARY SCHOOL LINKED ANNEX





PUBLIC BUILDING COMMISSION OF CHICAGO

MT. GREENWOOD ELEMENTARY SCHOOL LINKED ANNEX





PUBLIC BUILDING COMMISSION OF CHICAGO

MT. GREENWOOD ELEMENTARY SCHOOL LINKED ANNEX





PUBLIC BUILDING COMMISSION OF CHICAGO

MT. GREENWOOD ELEMENTARY SCHOOL LINKED ANNEX





PUBLIC BUILDING COMMISSION OF CHICAGO

MT. GREENWOOD ELEMENTARY SCHOOL LINKED ANNEX





PUBLIC BUILDING COMMISSION OF CHICAGO

MT. GREENWOOD ELEMENTARY SCHOOL LINKED ANNEX



©2004 James Steinkamp: Steinkamp/Ballogg Photography



©2004 James Steinkamp: Steinkamp/Ballogg Photography



PUBLIC BUILDING COMMISSION OF CHICAGO

MT. GREENWOOD ELEMENTARY SCHOOL LINKED ANNEX





PUBLIC BUILDING COMMISSION OF CHICAGO

MT. GREENWOOD ELEMENTARY SCHOOL LINKED ANNEX

PROJECT PROGRAM:

Existing Building:

- 63,062 SF
- 29 Classrooms
- Library
- Gymnasium
- Auditorium
- Administrative Suite

New Addition:

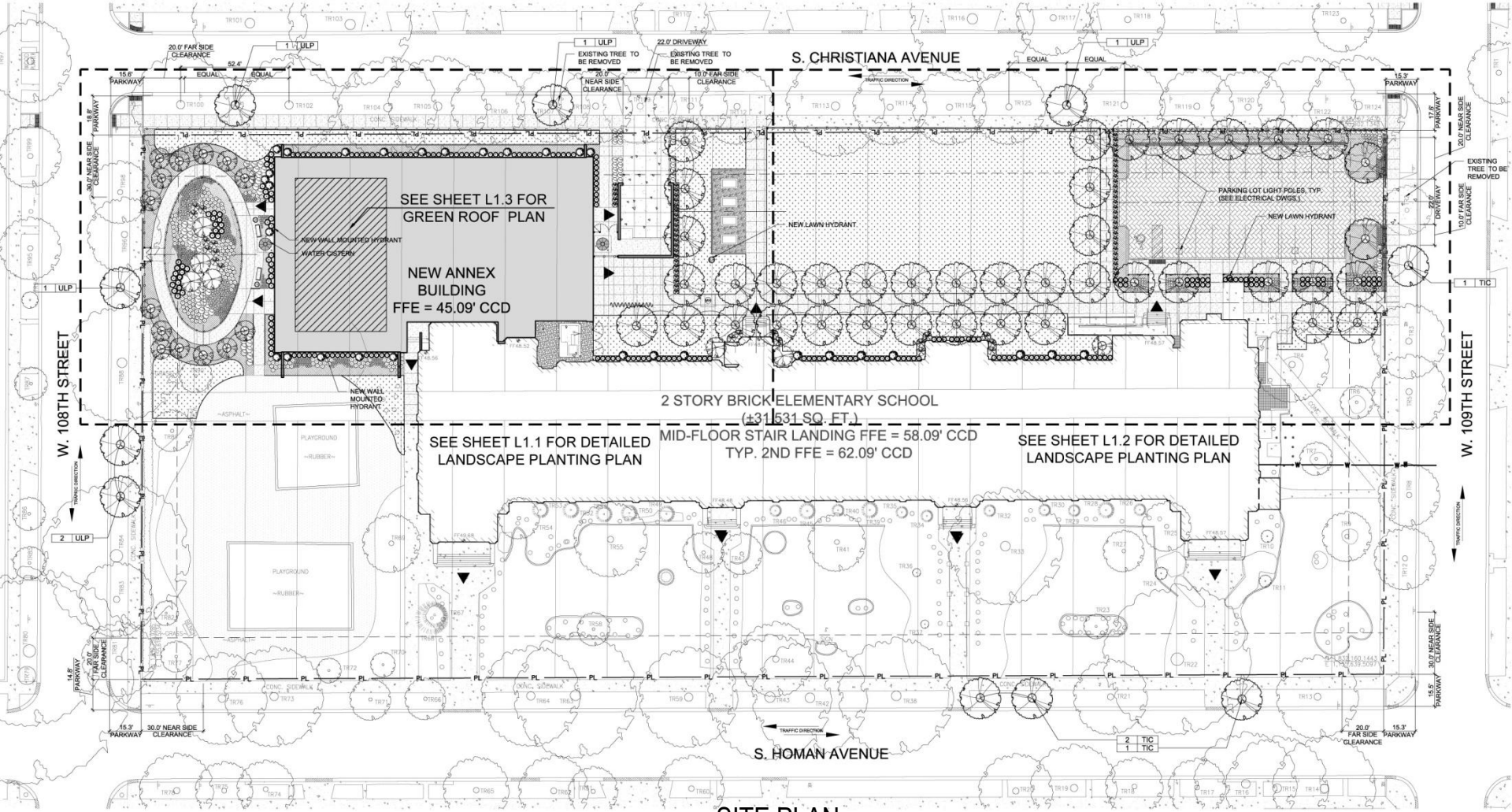
- 26,190 SF
- 8 Classrooms
- Kitchen and Dining Facility
- Linked Connection to Existing Building
- Renovation of existing kitchen into storage

Green Roof:

- Partial Green & Reflective Roof

PUBLIC BUILDING COMMISSION OF CHICAGO

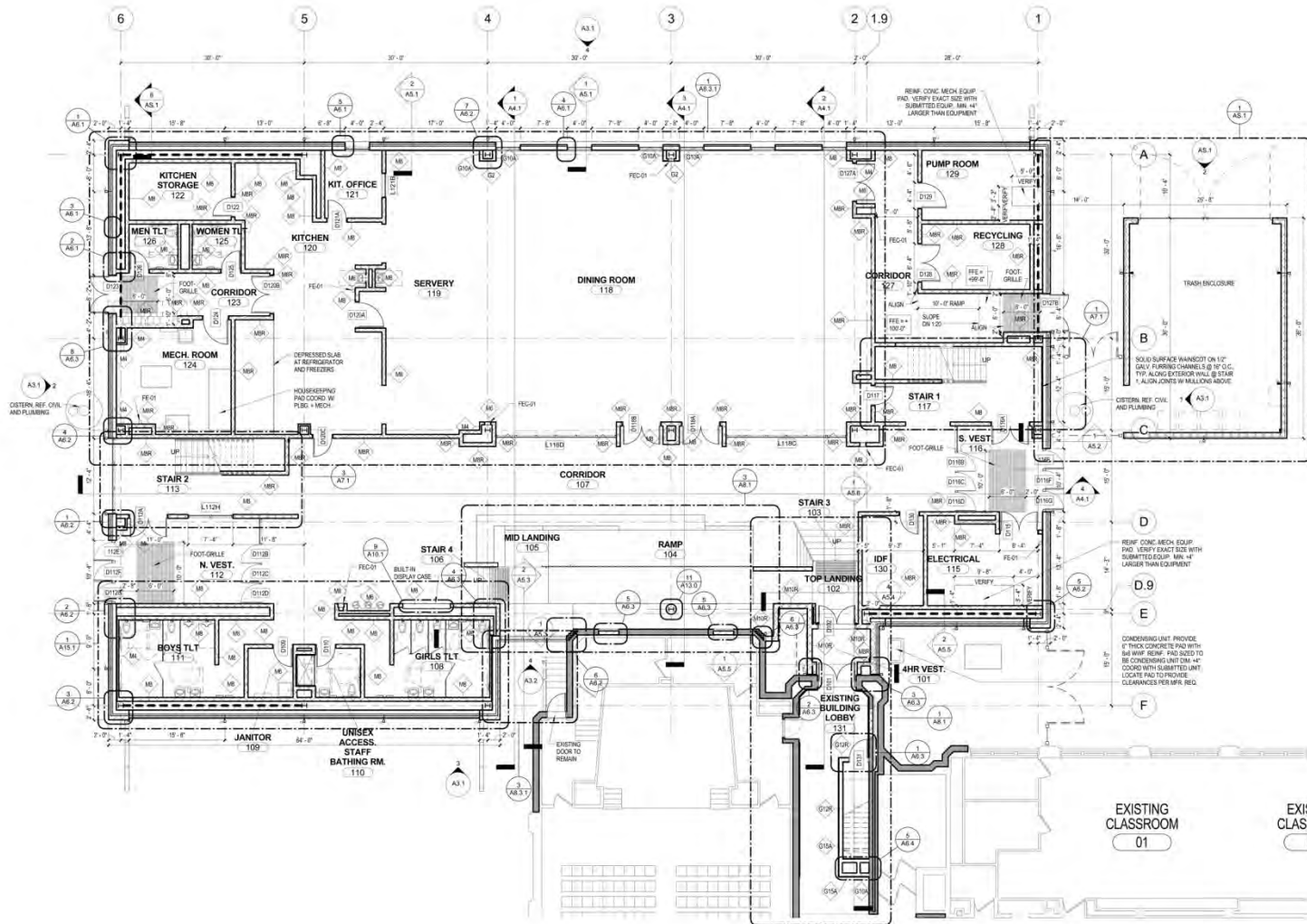
MT. GREENWOOD ELEMENTARY SCHOOL LINKED ANNEX



SITE PLAN

PUBLIC BUILDING COMMISSION OF CHICAGO

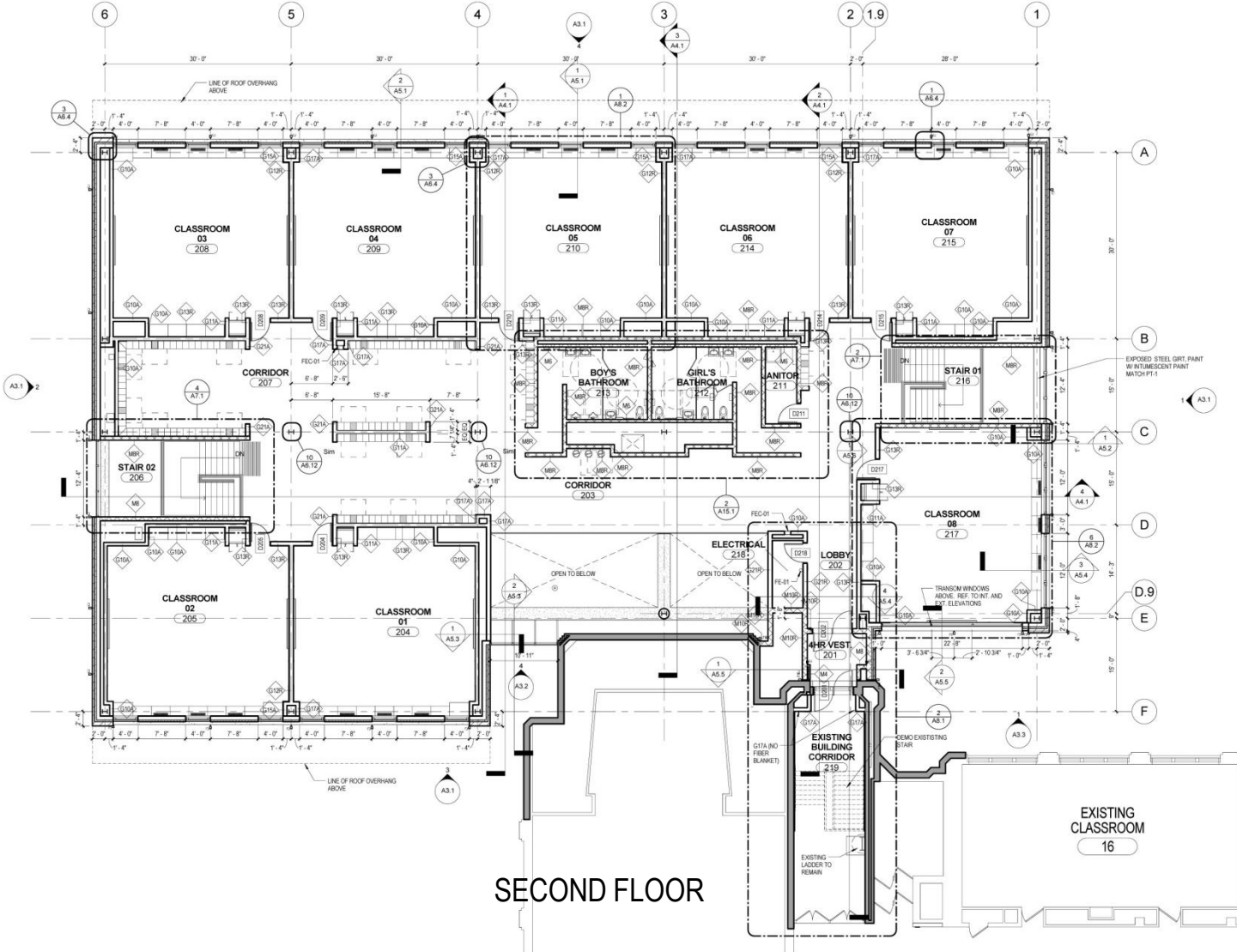
MT. GREENWOOD ELEMENTARY SCHOOL LINKED ANNEX



FIRST FLOOR

PUBLIC BUILDING COMMISSION OF CHICAGO

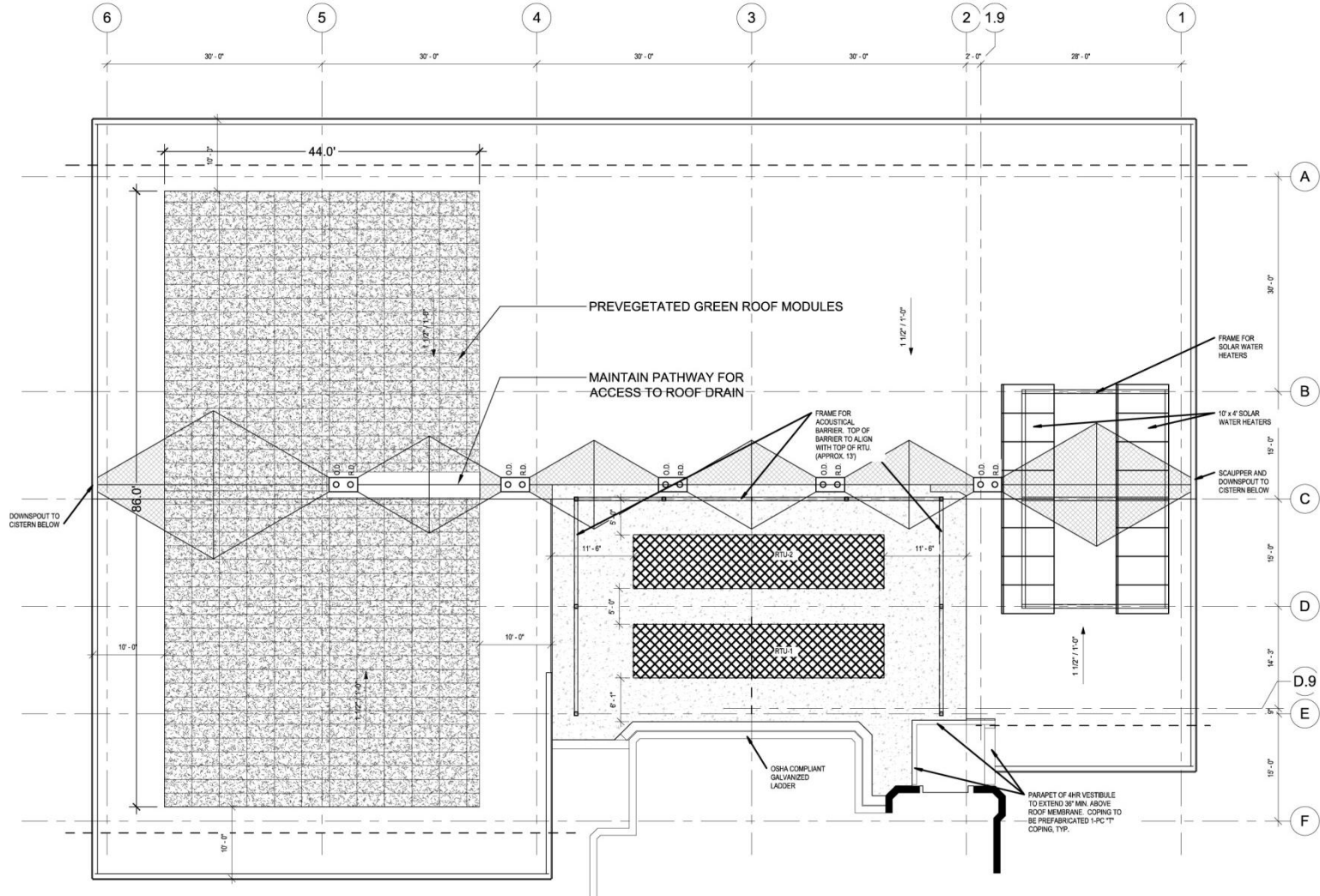
MT. GREENWOOD ELEMENTARY SCHOOL LINKED ANNEX



SECOND FLOOR

PUBLIC BUILDING COMMISSION OF CHICAGO

MT. GREENWOOD ELEMENTARY SCHOOL LINKED ANNEX



GREEN ROOF PLAN



PUBLIC BUILDING COMMISSION OF CHICAGO

MT. GREENWOOD ELEMENTARY SCHOOL LINKED ANNEX

PROJECT DEVELOPMENT SCHEDULE:

MAY-JULY 2010	LINKED ANNEX PROTOTYPE DEVELOPMENT
AUGUST 2010	CPS APPROVAL TO UNDERTAKE PROJECT
AUGUST 2010	TESTING, DESIGN DEVELOPMENT & CONSTRUCTION DOCUMENTS
OCTOBER 2010	REQUEST TO CPS FOR AUTHORITY TO BID
NOVEMBER 2010	PROCUREMENT PROCESS & AWARD RECOMMENDATION FOR PBC BOARD APPROVAL
JANUARY 2011	COMMUNITY MEETING
FALL SEMESTER 2011	CONSTRUCTION BY PBC & FURNITURE, FIXTURES & EQUIPMENT BY CPS & FACILITY OPENING



PUBLIC BUILDING COMMISSION OF CHICAGO

MT. GREENWOOD ELEMENTARY SCHOOL LINKED ANNEX

Commitment to Sustainable Development for the Environment

- Diversion of construction waste from landfills
- Utilization of durable and recycled materials in construction
- Reflective and green roofs
- Light sensors and daylight harvesting
- Solar-powered features
- High efficiency heating and cooling systems
- Low flow/low consumption water usage
- Native and adaptive landscape species
- Aggressive stormwater management



PUBLIC BUILDING COMMISSION OF CHICAGO

MT. GREENWOOD ELEMENTARY SCHOOL LINKED ANNEX

Commitment to Economic Sustainability Programs for the Community

- Programs Include:
 - Bid incentives for the employment of apprentices
 - Bid incentives for the employment of minority and female workers
 - Contract provisions that require at least 50% of the labor force be residents of the City of Chicago
 - Contract provisions with regard for community hiring, helping to employ those closest to the work at hand
 - Contract provisions that require minority- and women-owned business participation
 - Contract provisions for local business participation



PUBLIC BUILDING COMMISSION OF CHICAGO

MT. GREENWOOD ELEMENTARY SCHOOL LINKED ANNEX



QUESTION & ANSWER