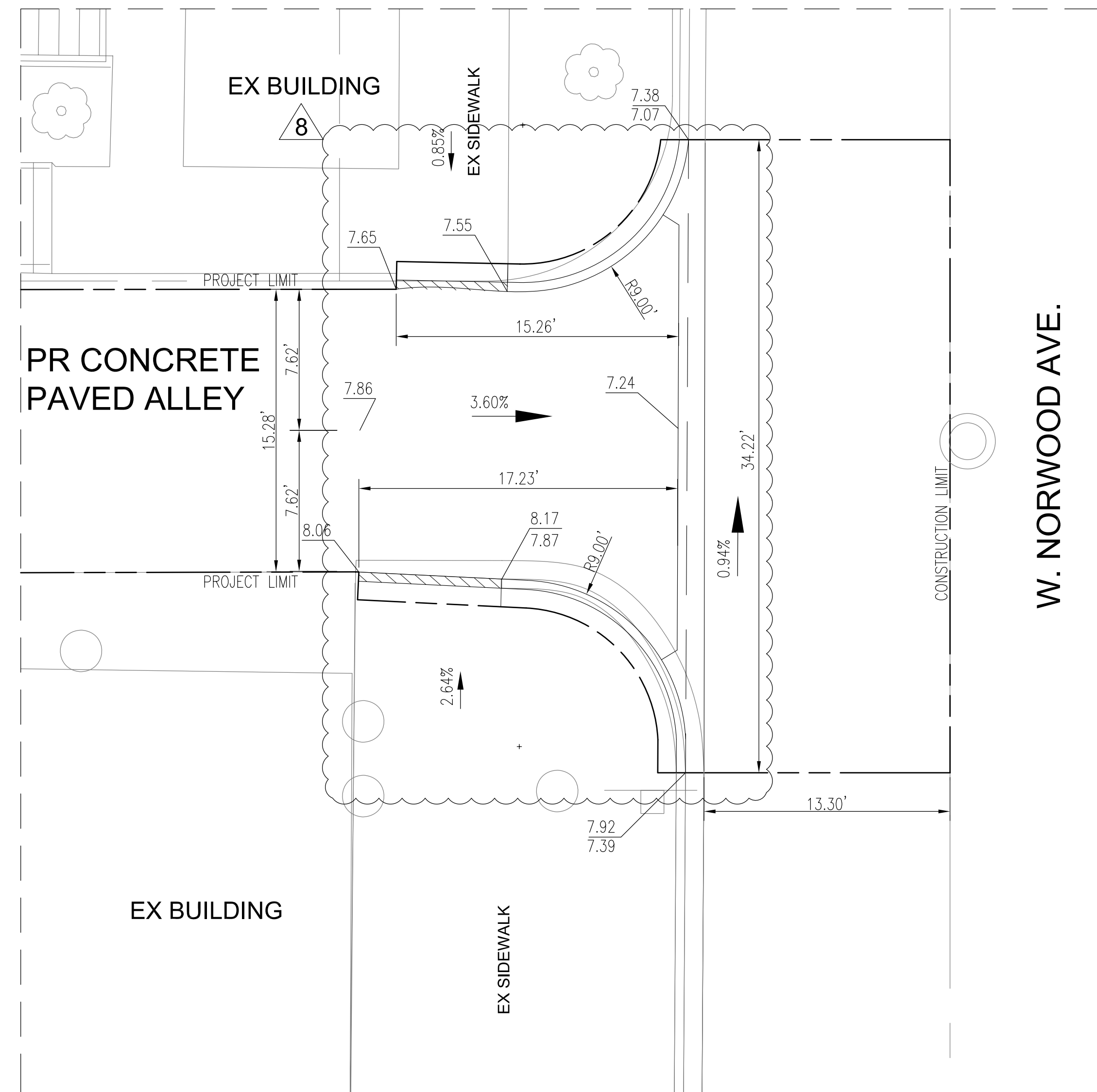
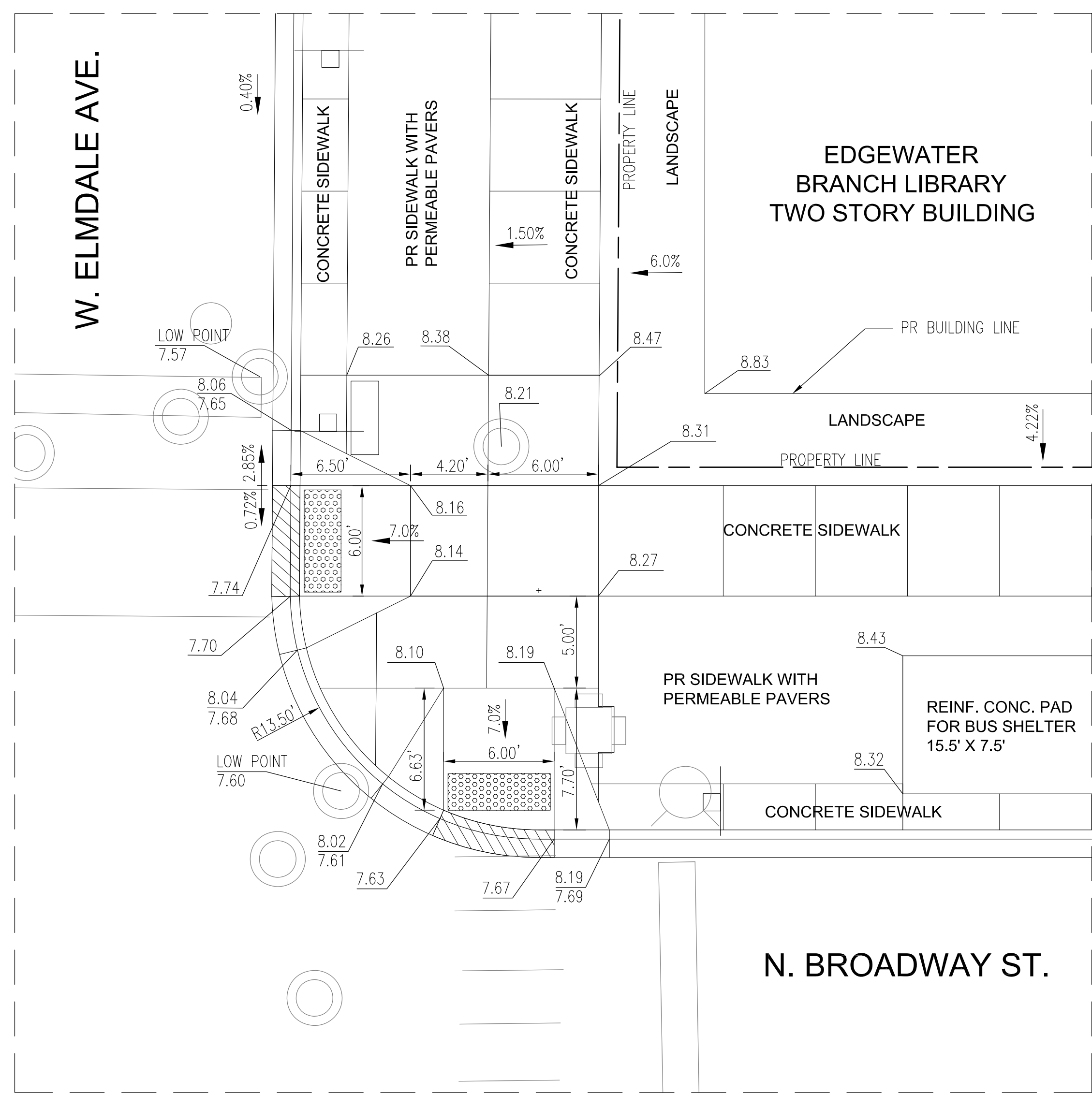


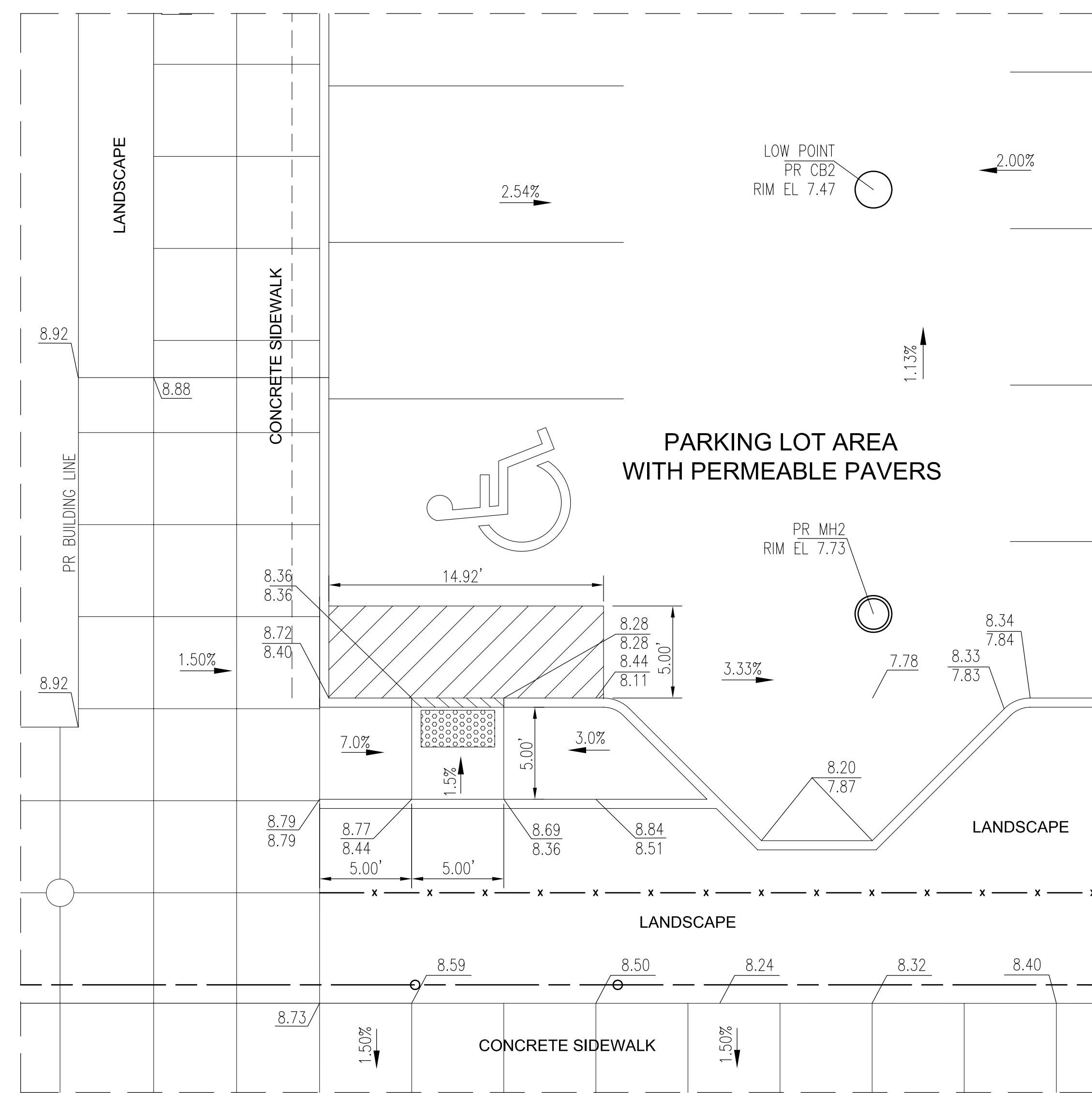
1 ALLEY RETURN AT W. ELMDALE AVE.
SCALE: 1"=5'



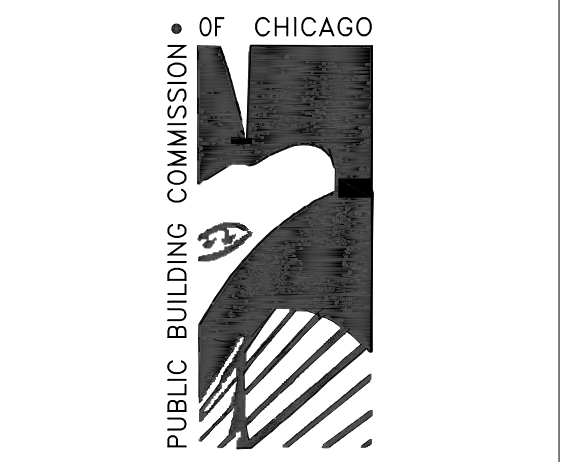
2 ALLEY RETURN AT W. NORWOOD AVE.
SCALE: 1"=5'



3 ADA RAMPS AT W. ELMDALE AVE. AND N. BROADWAY ST.
SCALE: 1"=5'



4 ADA RAMP AT PARKING LOT
SCALE: 1"=5'



EDGEWATER BRANCH LIBRARY
6000 N. BROADWAY STREET
CHICAGO, ILLINOIS 60660
CHICAGO PUBLIC LIBRARIES
CAPITAL PROGRAM NEW CONSTRUCTION
CITY OF CHICAGO, MAYOR RAHM EMANUEL

ARCHITECTURE PLANNING INTERIORS

LOHAN ANDERSON

401 NORTH MICHIGAN AVE. SUITE 500
CHICAGO, IL 60611
TEL #: 312.988.7800 FAX #: 312.229.1232

Matrix Engineering Corp.
Chicago, Illinois
Structural Engineer

Henneman Engineering Inc
Chicago, Illinois
Mechanical Engineer

CCJM Engineers, Ltd.
Chicago, Illinois
Electrical, Plumbing, FP Engineer

Delta Engineering Group
Chicago, Illinois
Civil Engineer

Altamanu
Chicago, Illinois
Landscape Architect

HJKessler Associates, Inc.
Chicago, Illinois
LEED Consultant

Issuance

Mark	Description	Date
8	ADDENDUM 03	10.25.11
7	BID	09.30.11
6	100% CD REVIEW	09.28.11
5	PERMIT	06.24.11
4	60% CD REVIEW	04.04.11
3	DESIGN DEVELOPMENT	02.14.11
2	SCHEMATIC DESIGN	12.16.10
1	CONCEPTUAL DESIGN	03.05.10

PBC Project Name: Edgewater Branch Library
PBC Project No.: 08050
AOR Project No.: 08280

Title
GRADING PLAN
SHEET 2 OF 3

Sheet
C3.2