

WILLIAM J ONAHAN ELEMENTARY SCHOOL ANEX

LSK 1: PARKING LOT PERIMETER TREE LAYOUT

Project

Drawing

Date: 1.13.12

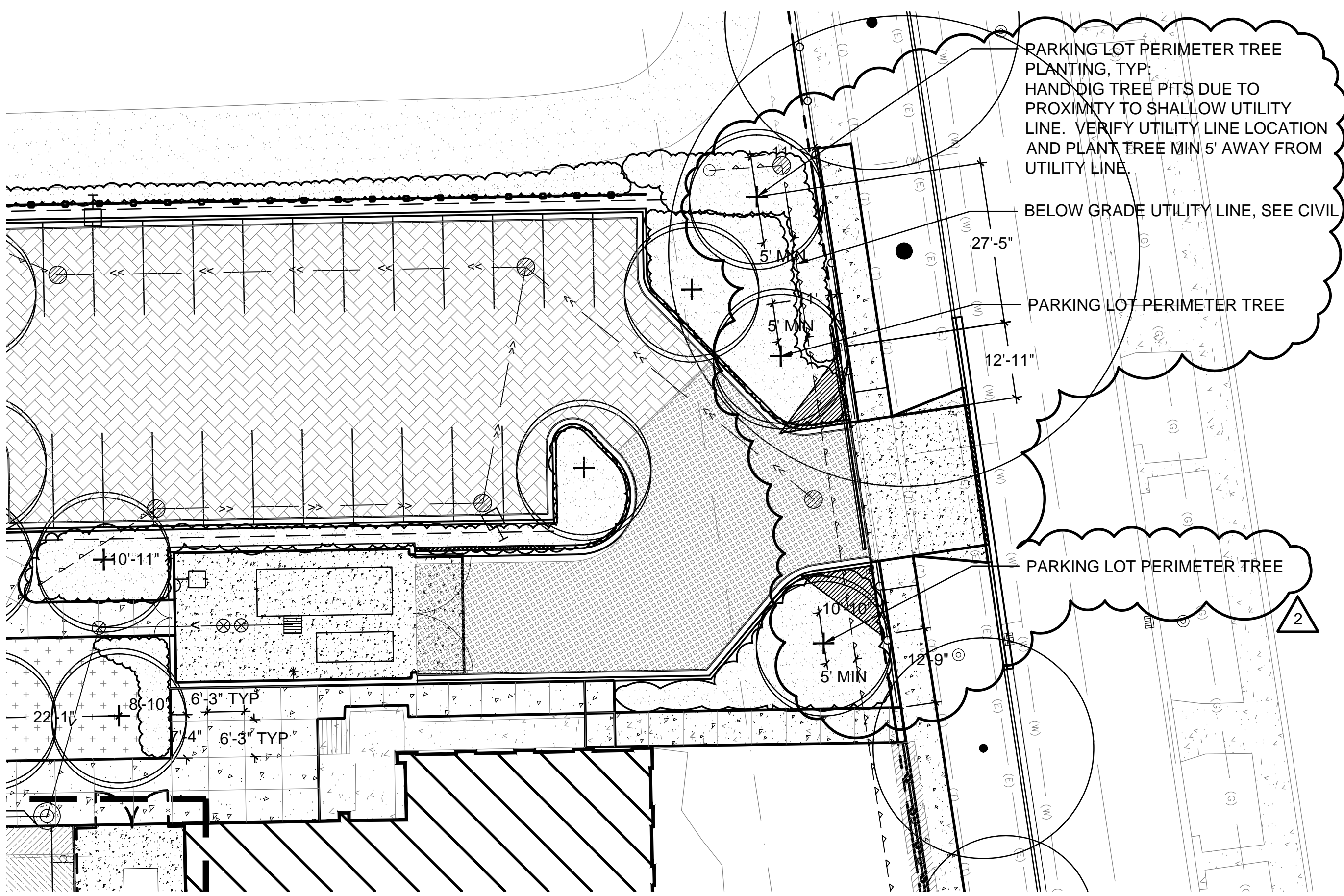
Drawn by: SM

Checked by: PH

Scale: 1/16" = 1'-0"

LSK- 1
 ADDENDUM #2

Sheet Number



PARKING LOT PERIMETER TREE PLANTING, TYP: HAND DIG TREE PITS DUE TO PROXIMITY TO SHALLOW UTILITY LINE. VERIFY UTILITY LINE LOCATION AND PLANT TREE MIN 5' AWAY FROM UTILITY LINE.

BELOW GRADE UTILITY LINE, SEE CIVIL

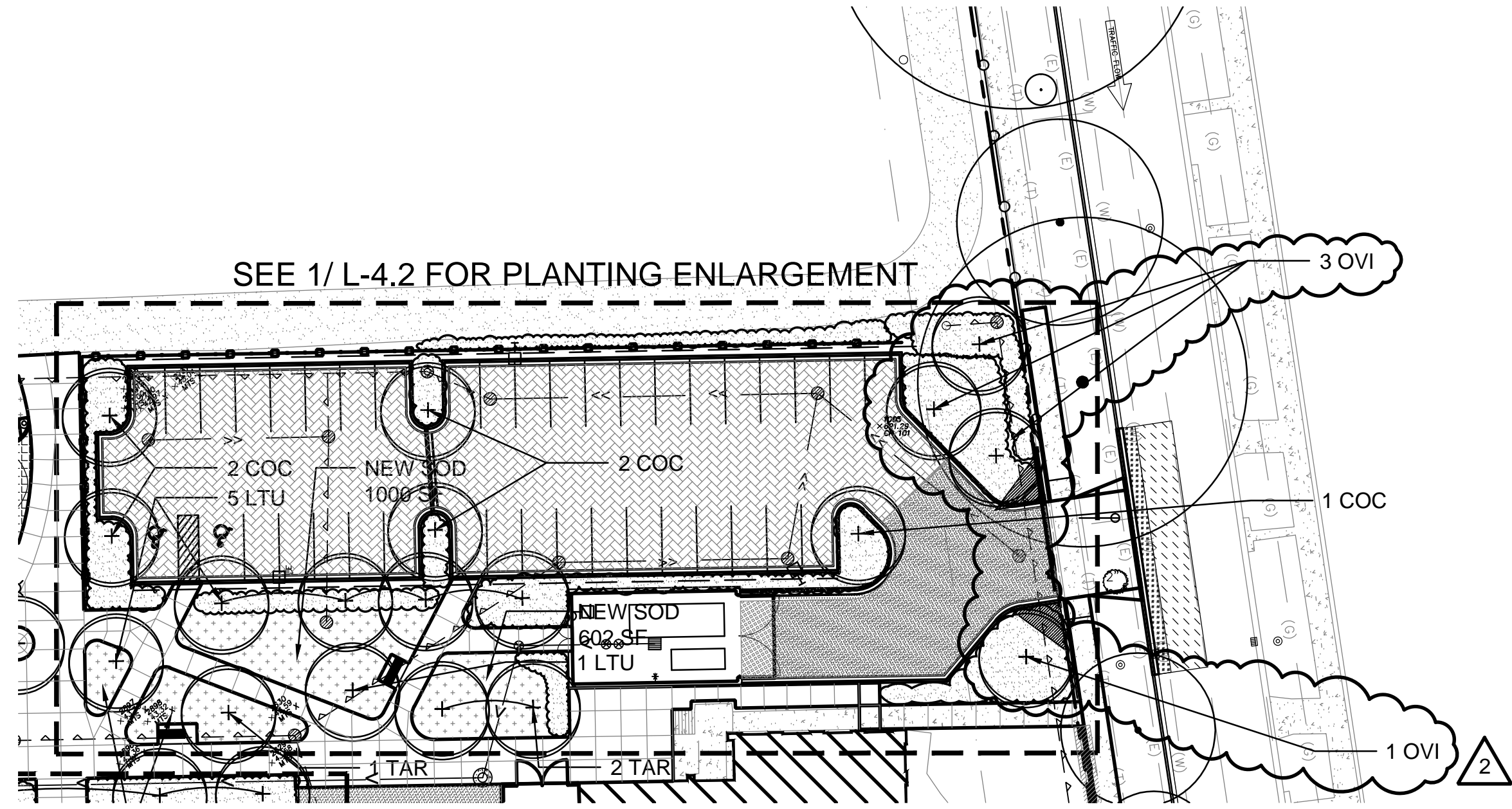
PARKING LOT PERIMETER TREE

PARKING LOT PERIMETER TREE

REFER TO SHEET L-3.1

WILLIAM J ONAHAN ELEMENTARY SCHOOL ANEX

LSK 2: PARKING LOT PERIMETER TREE PLANTING



Plant Schedule L-4.1

Plant Code	Qty	Size	Botanical Name	Common Name	Form	Mature Height	Spacing	Comments
Shade Trees								
AGA	5	4" cal	<i>Amelanchier x grandiflora</i> 'Autumn Brilliance'	Autumn Brilliance Apple Serviceberry	B&B	25' ht	See Plans	Multistem
COC	7	4" cal	<i>Celtis occidentalis</i> 'Chicagoland'	Chicagoland Hackberry	B&B	70' ht	See Plans	
CCA	15	4" cal	<i>Carpinus caroliniana</i>	American Hornbeam	B&B	35' ht	See Plans	Single Stem
LTU	6	4" cal	<i>Liriodendron tulipifera</i>	Tuliptree	B&B	70' ht	See Plans	
GTS	2	4" cal	<i>Gleditsia tricanthos</i> var. <i>inermis</i> 'Shademaster'	Shademaster Honey Locust	B&B	45' ht	See Plans	
QBI	2	4" cal	<i>Quercus bicolor</i>	Swamp White Oak	B&B	60' ht	See Plans	
OVI	4	4" cal	<i>Ostrya virginiana</i>	Eastern Hop Hornbeam	B&B	40' ht	See Plans	
QIM	2	4" cal	<i>Quercus imbricaria</i>	Shingle Oak	B&B	60' ht	See Plans	
QMA	2	4" cal	<i>Quercus macrocarpa</i>	Bur Oak	B&B	80' ht	See Plans	
QMU	2	4" cal	<i>Quercus muhlenbergii</i>	Chinkapin Oak	B&B	50' ht	See Plans	
TAR	3	4" cal	<i>Tilia americana</i> 'Redmond'	Redmond American Linden	B&B			
Shrubs								
VD	18	48" ht.	<i>Viburnum dentatum</i> 'Christom'	Blue Muffin Viburnum	B&B	5' ht	5' o.c.	

REFER TO SHEET L-4.1

Date: 1.13.12

Drawn by: SM

Checked by: PH

Scale: 1" = 30'-0"

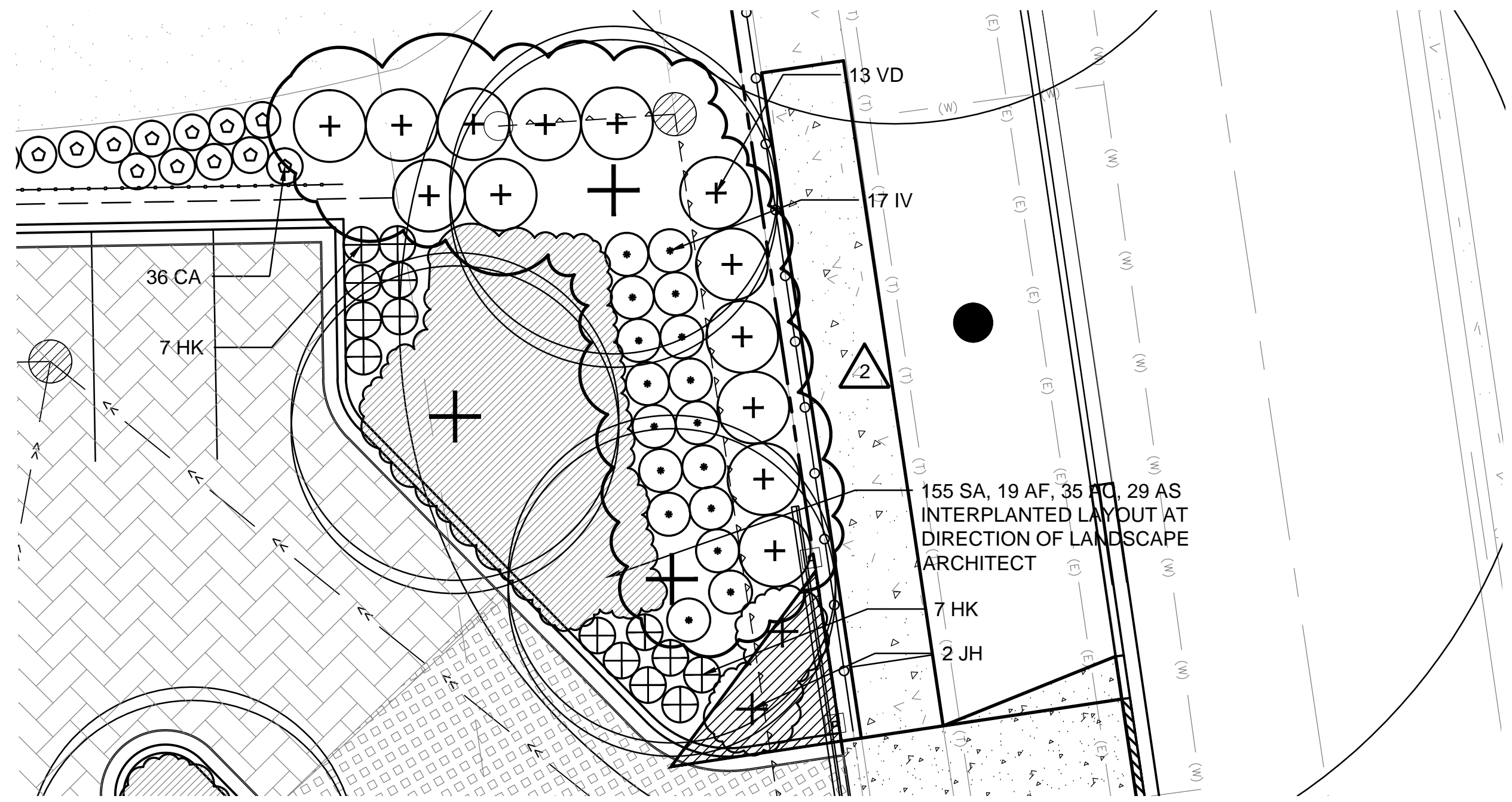
LSK- 2
 ADDENDUM #2
 Sheet Number

WILLIAM J ONAHAN ELEMENTARY SCHOOL ANEX

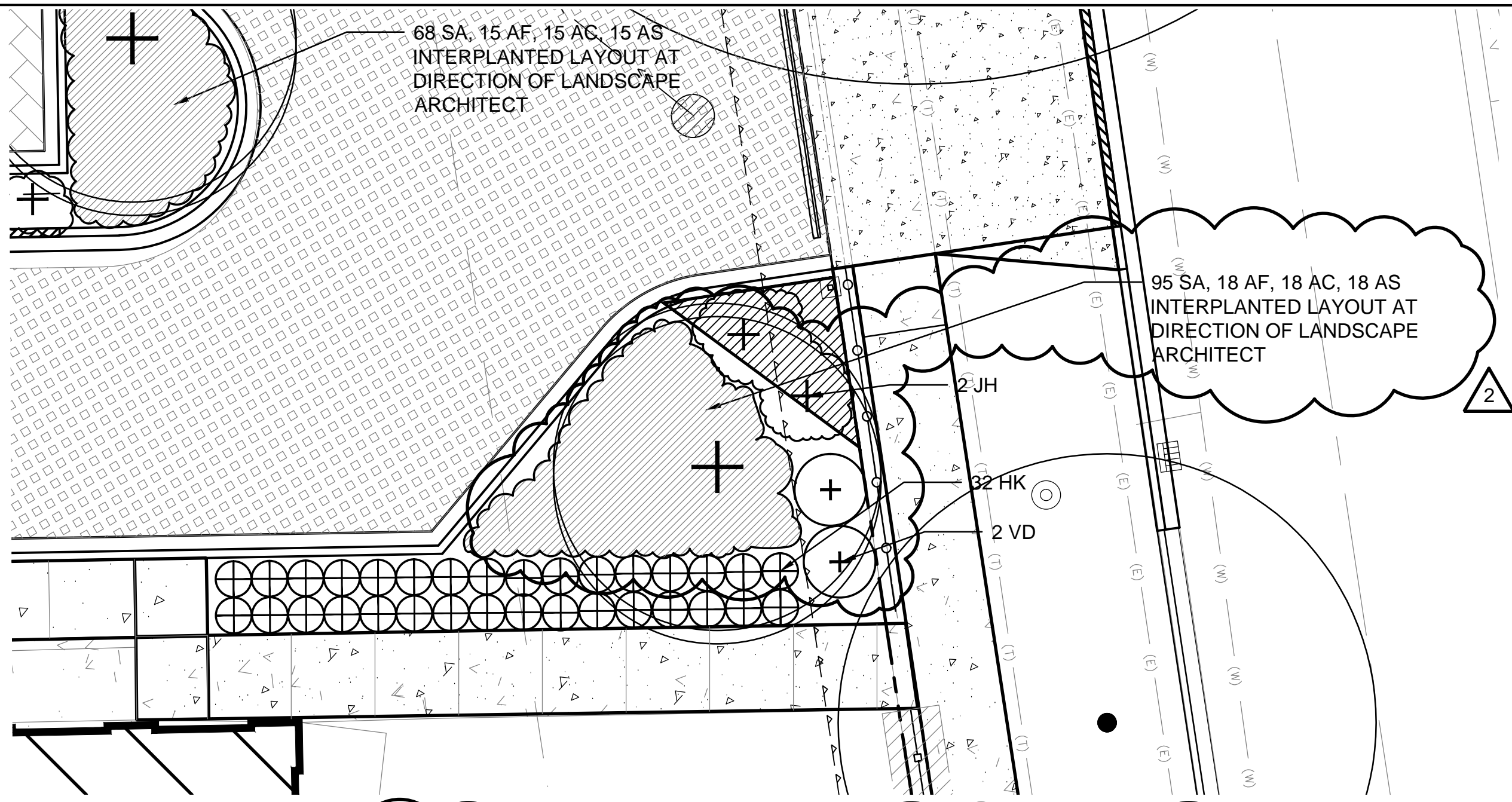
LSK 3: PARKING LOT PLANTING REVISION

Date: 1.13.12
 Drawn by: SM
 Checked by: PH
 Scale: 1/8" = 1'-0"

LSK- 3
 ADDENDUM #2
 Sheet Number



REFER TO SHEET L-4.2, DETAIL 1



Plant Schedule L-4.2, Detail 1

Plant Code	Qty	Size	Botanical Name	Common Name	Form	Mature Height	Spacing	Comments
Shrubs								
HK	70	#5 cont.	<i>Hypericum kalmianum</i> 'Ames'	Ames St. John's Wort	CG	3' ht	30" o.c.	
IV	17	24" ht	<i>Itea virginica</i> 'Sprich'	Little Henry Virginia Sweetpire	B&B	3' ht	3' o.c.	
JH	8	24" cont	<i>Juniperus horizontalis</i> 'Wiltonii'	Blue Rug Juniper	B&B	6" ht	6' o.c.	
JS	30	48" ht	<i>Juniperus scopulorum</i> 'Skyrocket'	Skyrocket Juniper	B&B	6' ht	5' o.c.	
VD	31	48" ht.	<i>Viburnum dentatum</i> 'Christom'	Blue Muffin Viburnum	B&B	5' ht	5' o.c.	
Perennials								
AC	112	12 flat	<i>Allium cernuum</i>	Nodding Wild Onion	CG	18" ht	15" o.c.	
AF	96	12 flat	<i>Allium schoenoprasum</i> 'Forescate'	Forescate Chives	CG	18" ht	15" o.c.	
AS	107	12 flat	<i>Allium</i> 'Summer Beauty'	Summer Beauty Allium	CG	18" ht	15" o.c.	
Grasses								
CA	60	#1 cont.	<i>Calamagrostis acutiflora</i> 'Overdam'	White Feather Reed Grass	CG	4' ht	30" o.c.	
SA	515	#1 cont.	<i>Sesleria autumnalis</i>	Autumn Moor Grass	CG	18" ht	15" o.c.	
Vines								
PQ	23	#1 cont.	<i>Parthenocissus quinquefolia</i>	Virginia Creeper	CG	4' ht	30" o.c.	

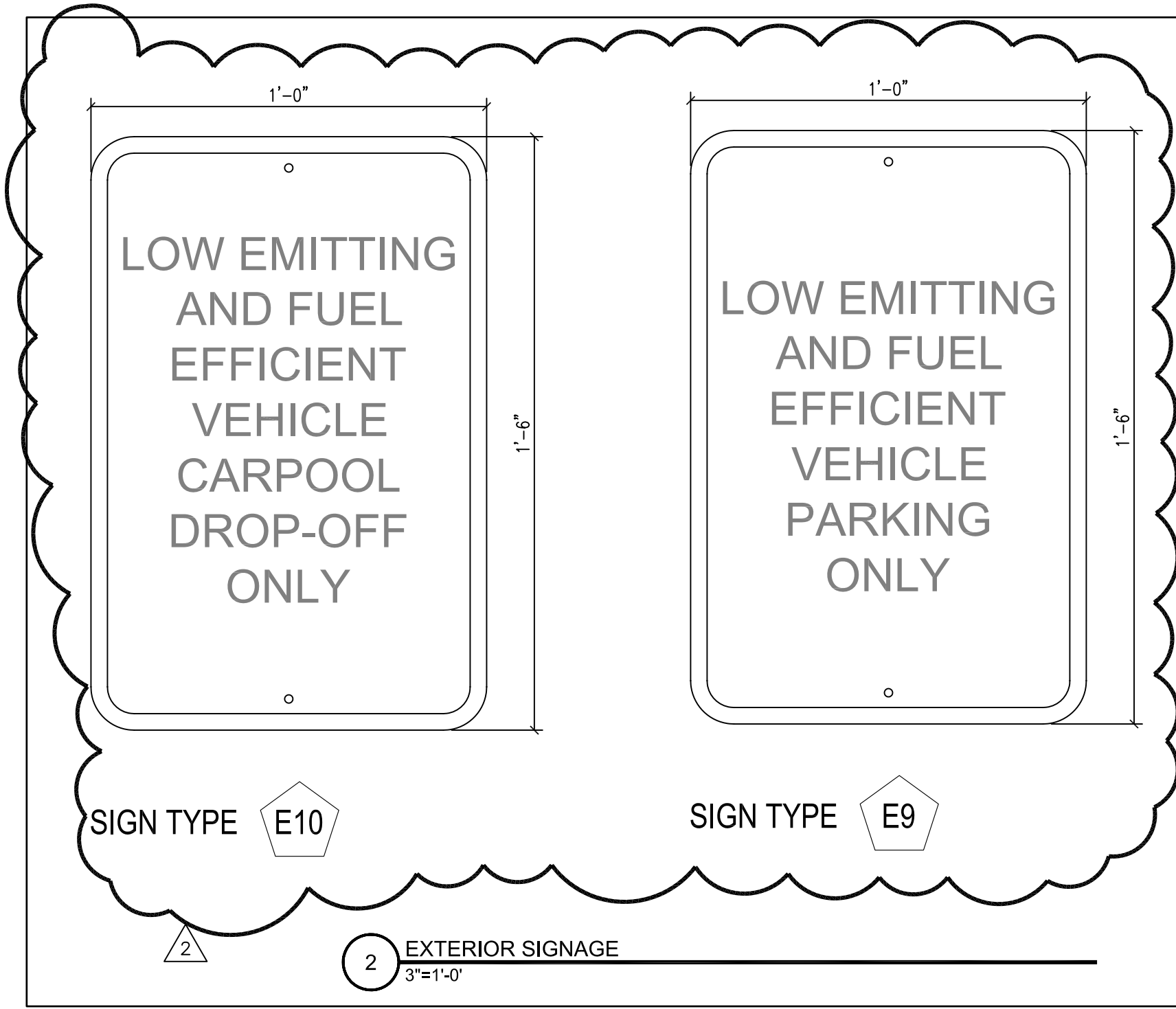
REFER TO SHEET L-4.2, DETAIL 1

WILLIAM J ONAHAN ELEMENTARY SCHOOL ANEX

LSK 4: PARKING LOT PLANTING REVISION 2

Date: 1.13.12
 Drawn by: SM
 Checked by: PH
 Scale: 1/8" = 1'-0"

LSK- 4
 ADDENDUM #2
 Sheet Number



ASK-20	CPS Darwin ADA-MCR 3116 W Belden Ave		2241 S. Wabash Avenue Chicago, Illinois 60616 Phone 312.567.1000 / Fax 312.567.9690
	Project #: 10-1010	Drawn By: XX	Date: 20120113
Dwg File: A13.0	Checked By: DD	© Bauer Latoza Studio, 2011	
BauerLatoza STUDIO		Architecture Historic Preservation Landscape Architecture Urban Design	

EXTERIOR SIGNAGE SCHEDULE

SIGNAGE TYPE	QUANTITY	LOCATION(S)	REMARKS
E1	4	AT NON ACCESSIBLE ENTRANCES	SEE SIGNAGE PLAN A13.1 FOR LOCATIONS
E2	4	AT NON ACCESSIBLE ENTRANCES	SEE SIGNAGE PLAN A13.1 FOR LOCATIONS
E3	2	AT EACH ACCESSIBLE ENTRANCE	SEE SIGNAGE PLAN A13.1 FOR LOCATIONS
E4	1	AT ENTRANCE TO PARKING LOT	SEE LANDSCAPE PLANS FOR LOCATIONS
E5	1	AT ENTRANCE TO PARKING LOT	SEE LANDSCAPE PLANS FOR LOCATIONS
E6	12	AT EACH EXTERIOR DOOR	NUMBERS 1-12; SEE SIGNAGE PLAN A13.1 FOR LOCATIONS
E7	5	AT EXTERIOR DOORS AS INDICATED	SEE SIGNAGE PLAN A13.1 FOR LOCATIONS
E8	7	AT EACH ENTRANCE	SEE SIGNAGE PLAN A13.1 FOR LOCATIONS
E9	1	AT PARKING LOT	SEE ARCHITECTURAL SITE PLAN AS.1 FOR LOCATION
E10	1	ALONG RAVEN STREET	SEE ARCHITECTURAL SITE PLAN AS.1 FOR LOCATION

2

2241 S. Wabash Avenue
Chicago, Illinois 60616
Phone 312.567.1000 / Fax 312.567.9690

BauerLatoza
STUDIO

Architecture
Historic Preservation
Landscape Architecture
Urban Design

CPS Darwin ADA-MCR
3116 W Belden Ave

Date: 20120113

Drawn By: XX

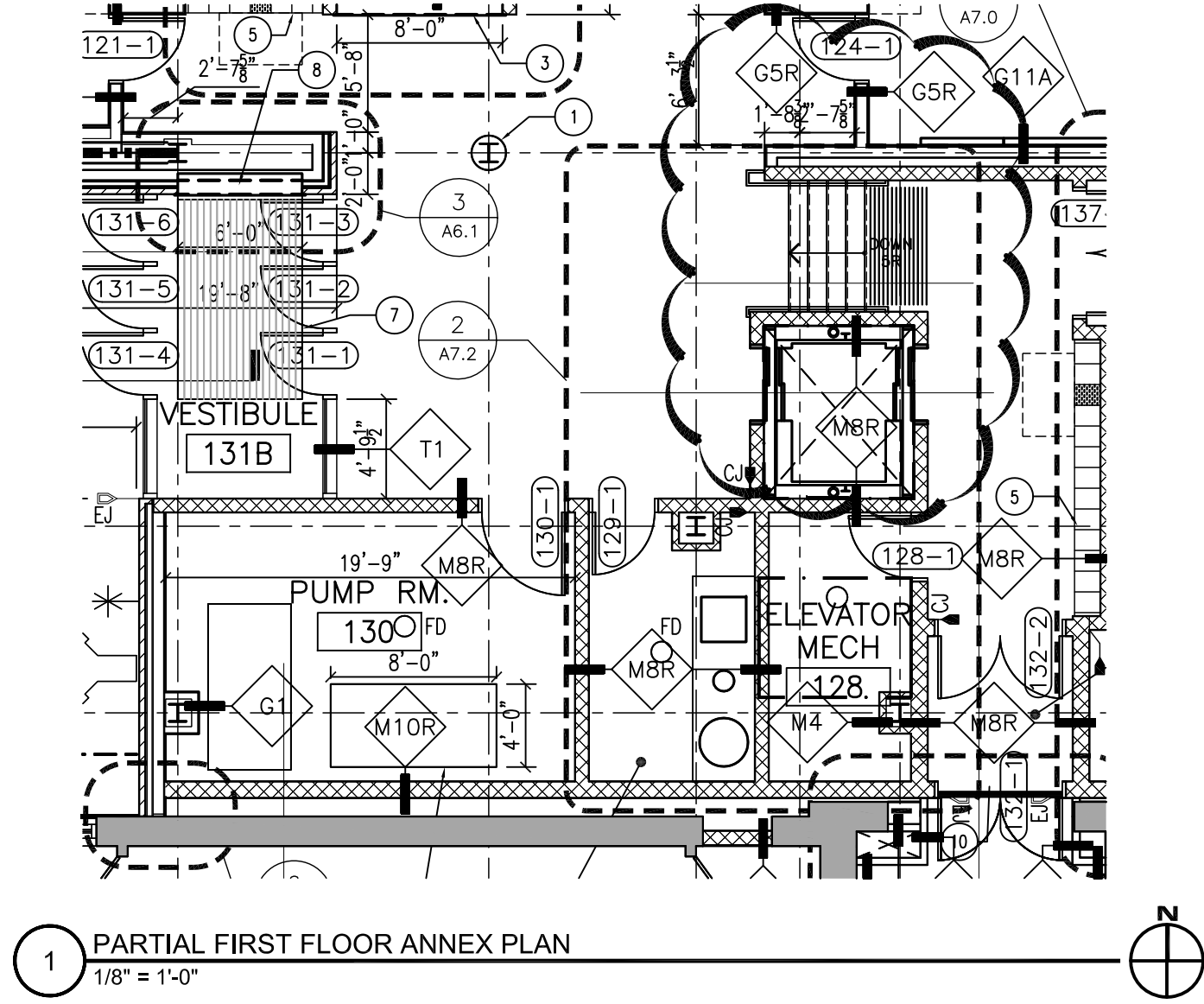
© Bauer Latoza Studio, 2011

Checked By: DD

ASK-21

Project #: 10-1010

Dwg File: A13.0



1 PARTIAL FIRST FLOOR ANNEX PLAN
1/8" = 1'-0"

CPS William J. Onahan Elementary
6634 W. Raven Street
Chicago, IL 60631

Drawn By: JC
Checked By: JC
Date: 2012/01/13
© Bauer Latoza Studio, 2011

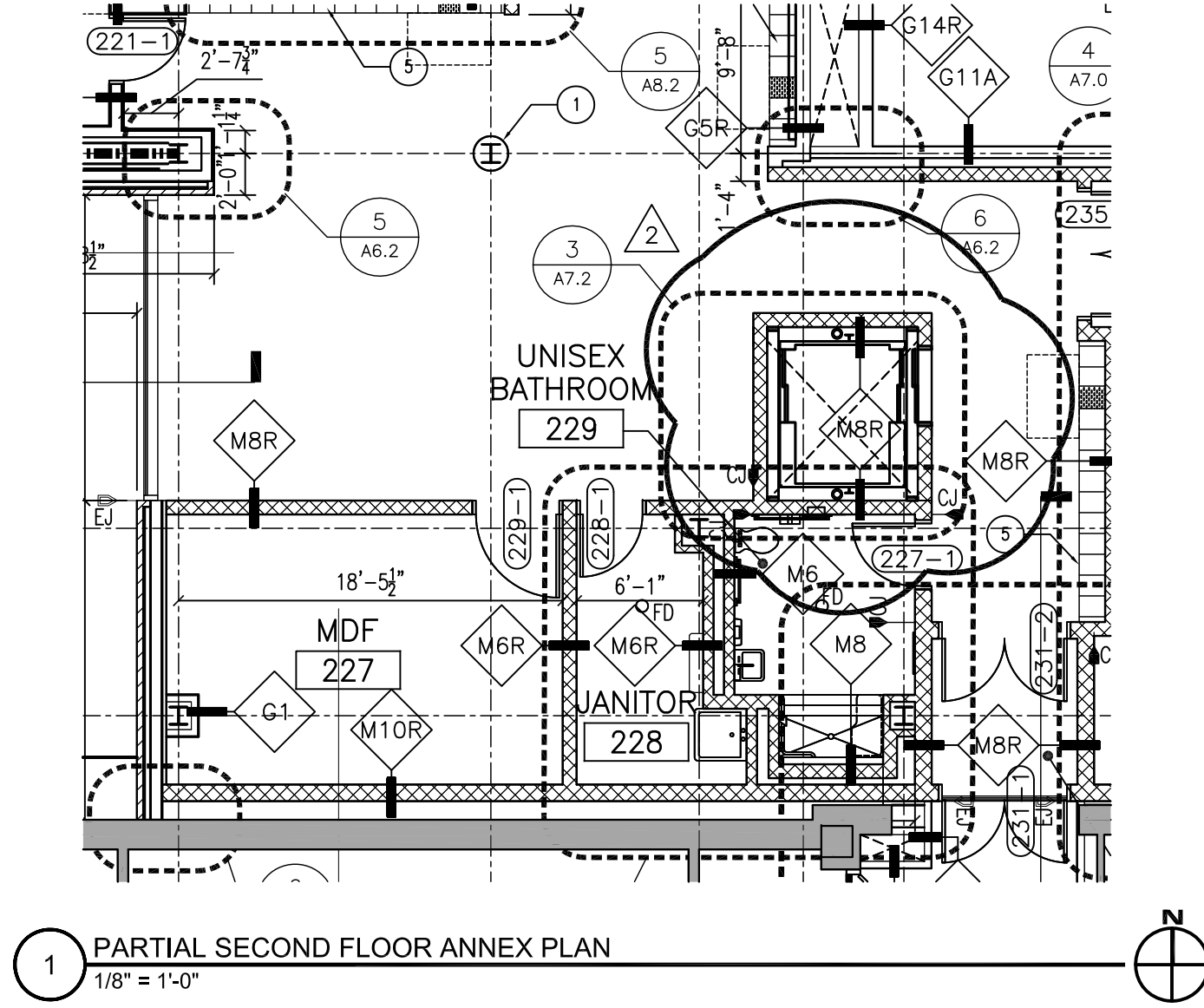
ASK-09
ADDENDUM #2

Project #: 11-0720
Dwg File: 1/A1.1A

2241 S. Wabash Avenue
Chicago, Illinois 60616
Phone 312.567.1000 / Fax 312.567.9090

BauerLatoza
STUDIO

Architecture
Historic Preservation
Landscape Architecture
Urban Design



1 PARTIAL SECOND FLOOR ANNEX PLAN
1/8" = 1'-0"

ASK-10
ADDENDUM #2

Project #: 11-0720
Dwg File: 1/A1.2A

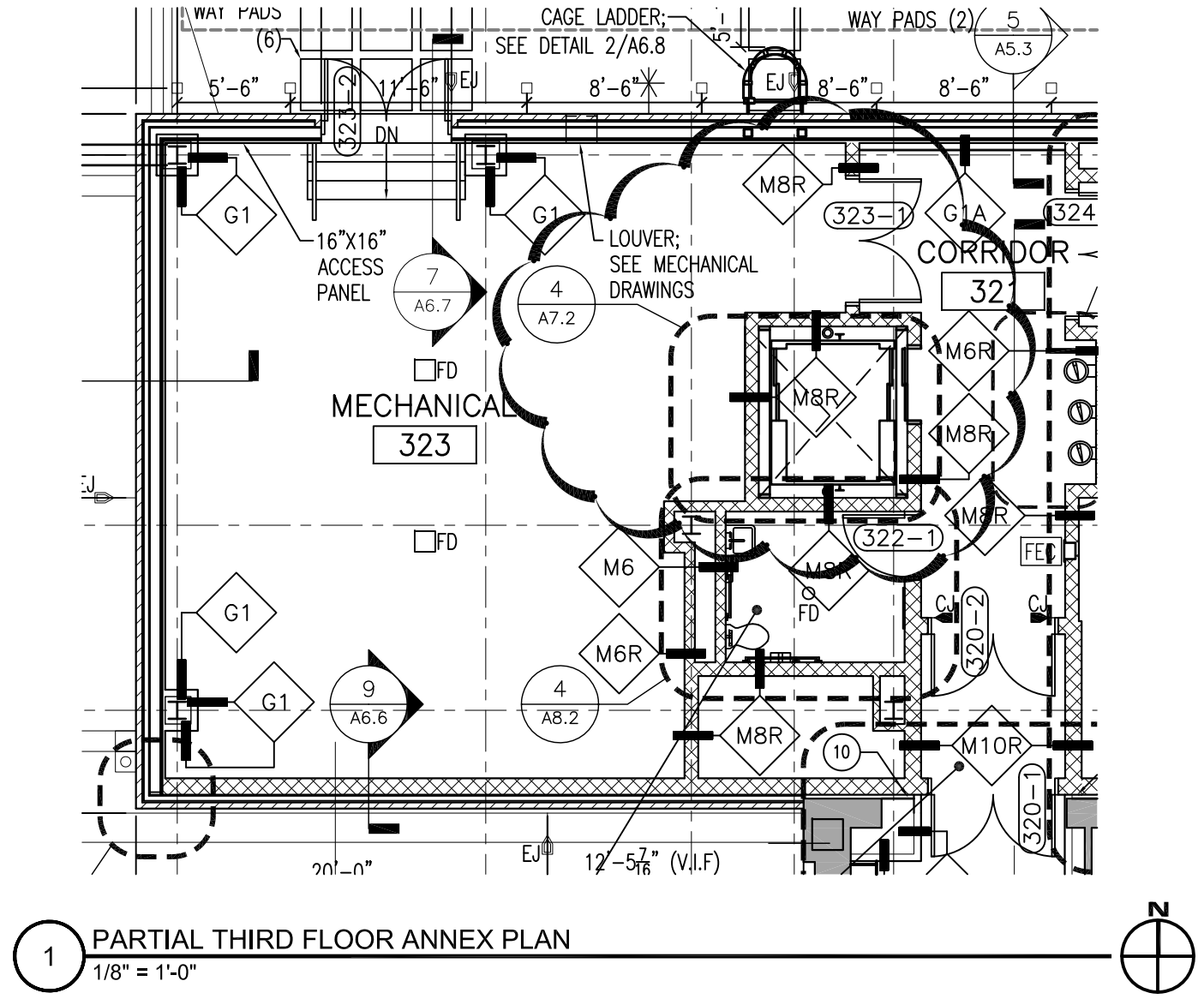
CPS William J. Onahan Elementary
6634 W. Raven Street
Chicago, IL 60631

Drawn By: JC
Checked By: JC
Date: 2012/01/13
© Bauer Latoza Studio, 2011

2241 S. Wabash Avenue
Chicago, Illinois 60616
Phone 312.567.1000 / Fax 312.567.9090

BauerLatoza
STUDIO

Architecture
Historic Preservation
Landscape Architecture
Urban Design



1 PARTIAL THIRD FLOOR ANNEX PLAN
 1/8" = 1'-0"

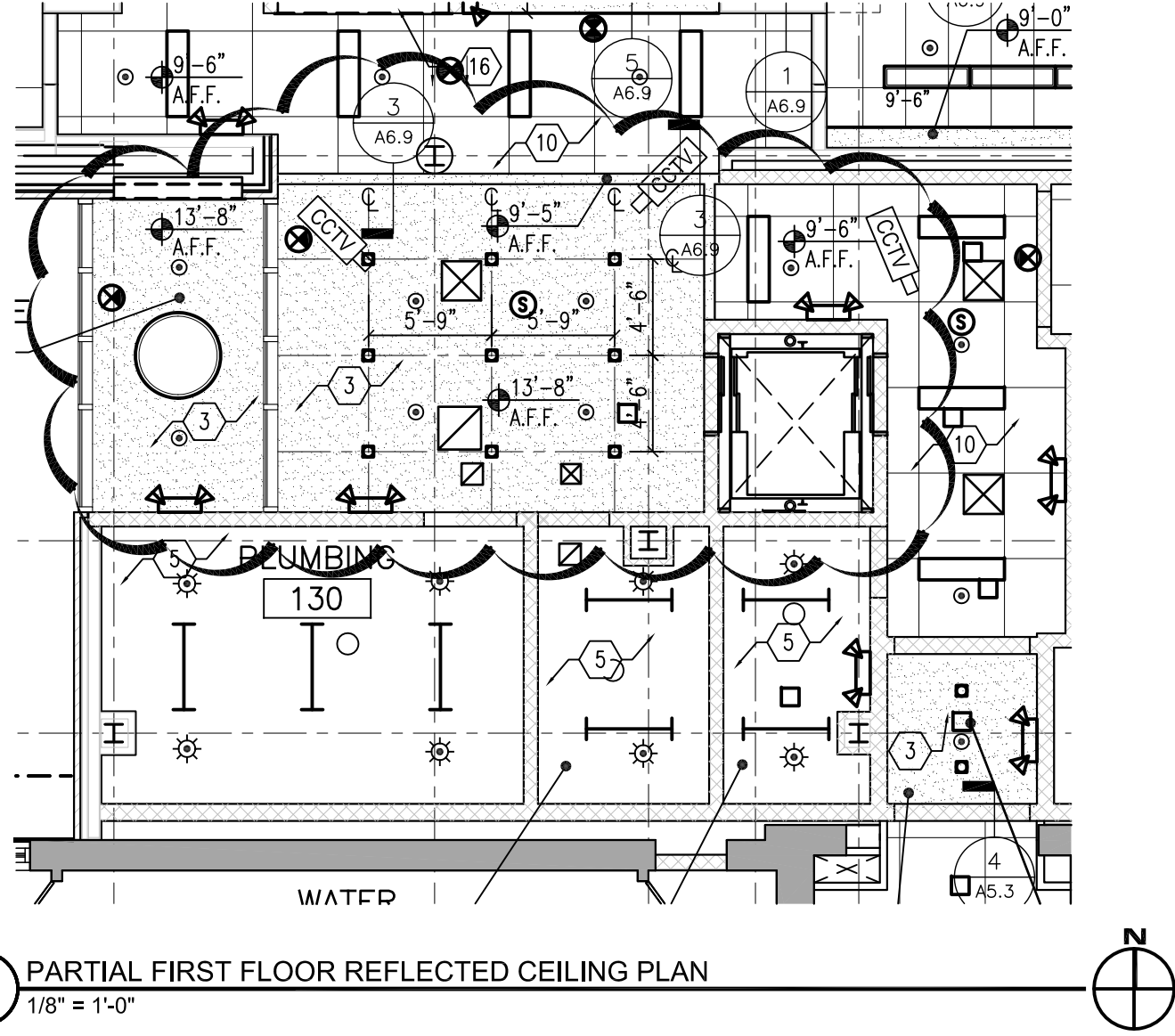
ASK-11
 ADDENDUM #2
 Project #: 11-0720
 Dwg File: 1/A1.3A

CPS William J. Onahan Elementary
 6634 W. Raven Street
 Chicago, IL 60631
 Drawn By: JC
 Checked By: JC
 Date: 2012/01/13
 © Bauer Latoza Studio, 2011

2241 S. Wabash Avenue
 Chicago, Illinois 60616
 Phone 312.567.1000 / Fax 312.567.9090
BauerLatoza
 STUDIO
 Architecture
 Historic Preservation
 Landscape Architecture
 Urban Design

1

PARTIAL FIRST FLOOR REFLECTED CEILING PLAN
1/8" = 1'-0"



ASK-12
ADDENDUM #2

Project #: 11-0720
Dwg File: 1/A2.1

CPS William J. Onahan Elementary
6634 W. Raven Street
Chicago, IL 60631

Drawn By: JC
Checked By: JC
Date: 2012/01/13
© Bauer Latoza Studio, 2011

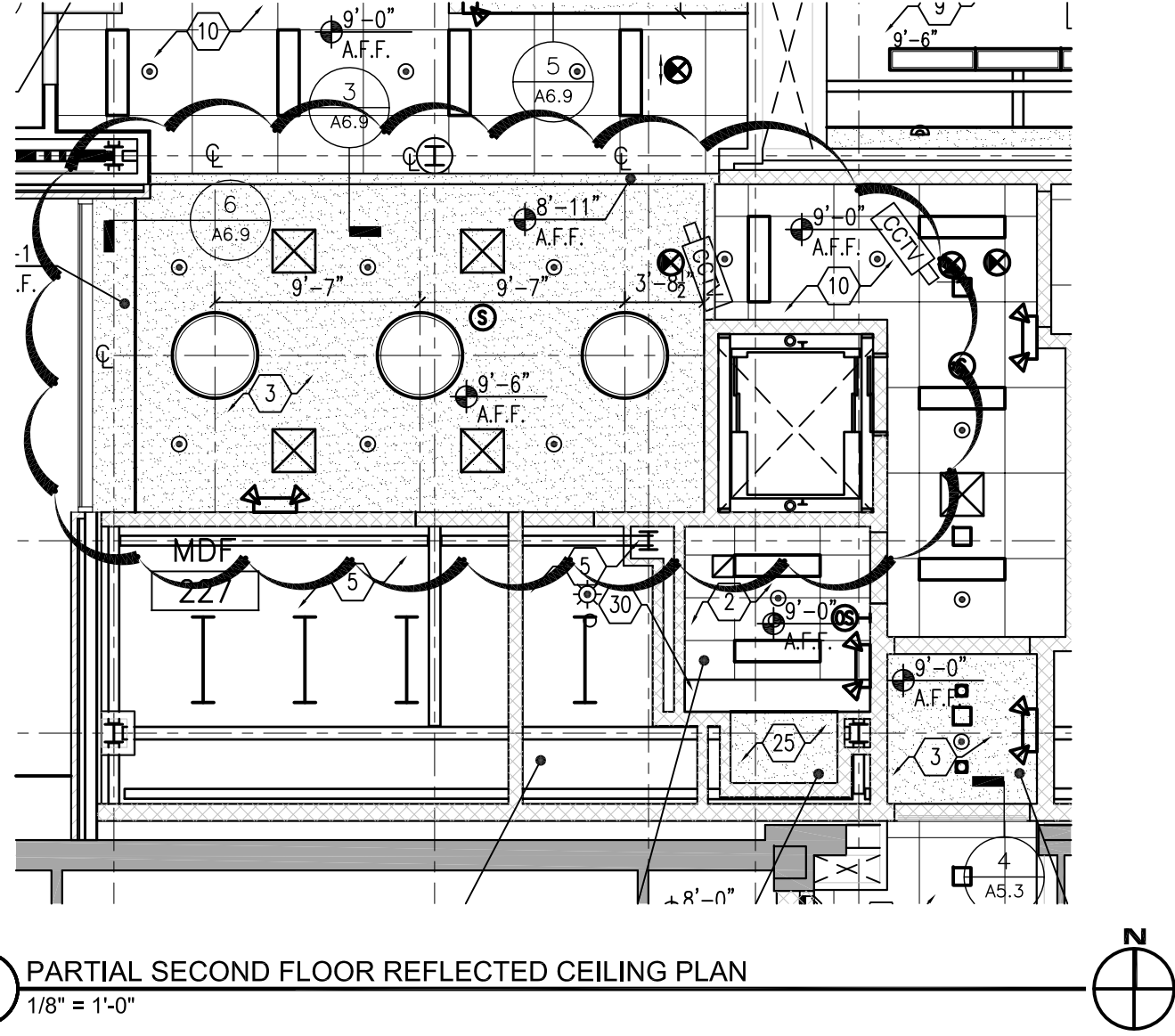
2241 S. Wabash Avenue
Chicago, Illinois 60616
Phone 312.567.1000 / Fax 312.567.9090

BauerLatoza
STUDIO

Architecture
Historic Preservation
Landscape Architecture
Urban Design

1

PARTIAL SECOND FLOOR REFLECTED CEILING PLAN
1/8" = 1'-0"



ASK-13
ADDENDUM #2

Project #: 11-0720

Dwg File: 1/A2.2

CPS William J. Onahan Elementary
6634 W. Raven Street
Chicago, IL 60631

Drawn By: JC

Checked By: JC

Date: 2012/01/13

© Bauer Latoza Studio, 2011

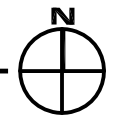
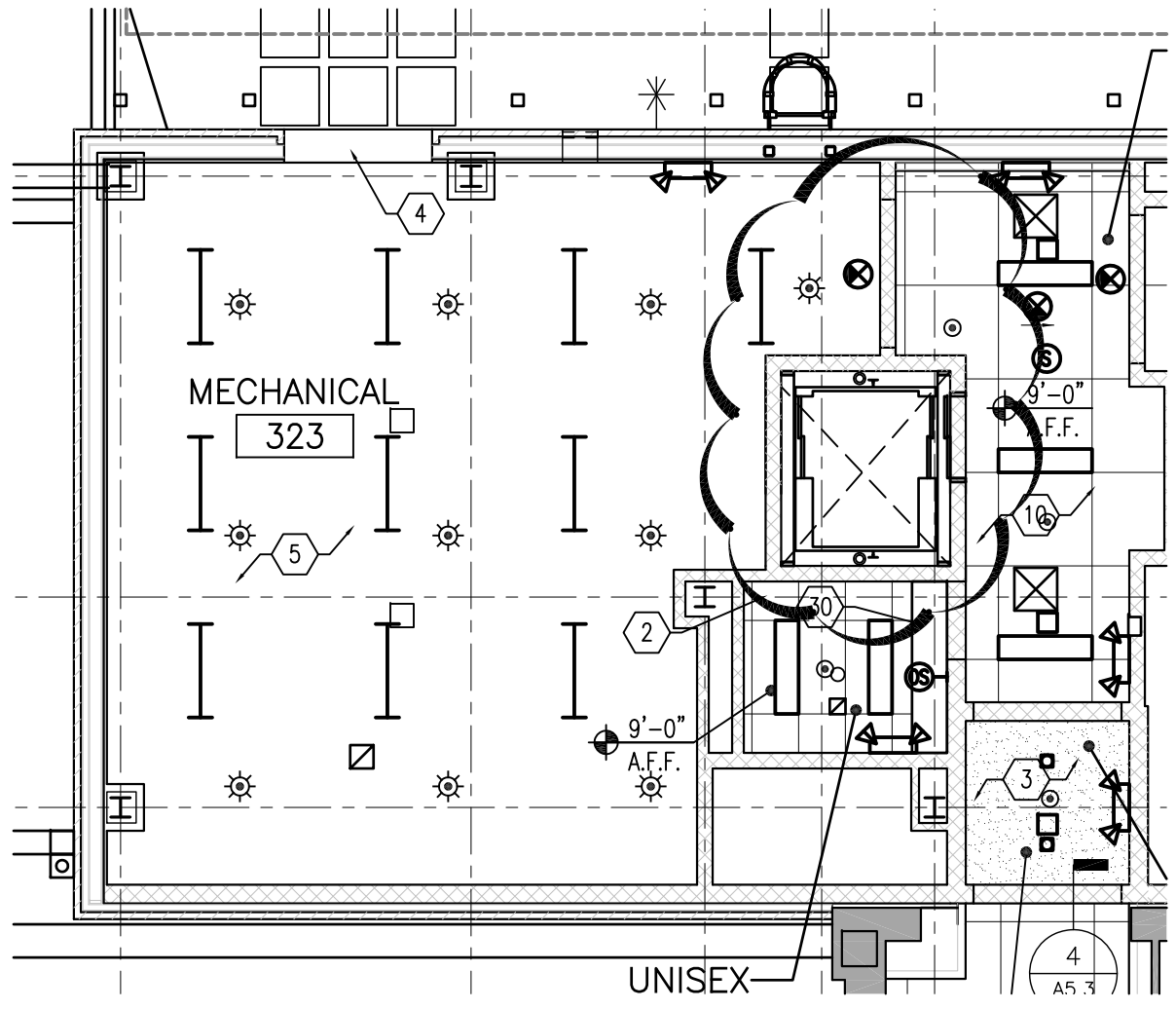
2241 S. Wabash Avenue
Chicago, Illinois 60616
Phone 312.567.1000 / Fax 312.567.9090

BauerLatoza
STUDIO

Architecture
Historic Preservation
Landscape Architecture
Urban Design

1

PARTIAL THIRD FLOOR REFLECTED CEILING PLAN
1/8" = 1'-0"



ASK-14
ADDENDUM #2

Project #: 11-0720
Dwg File: 1/A2.3

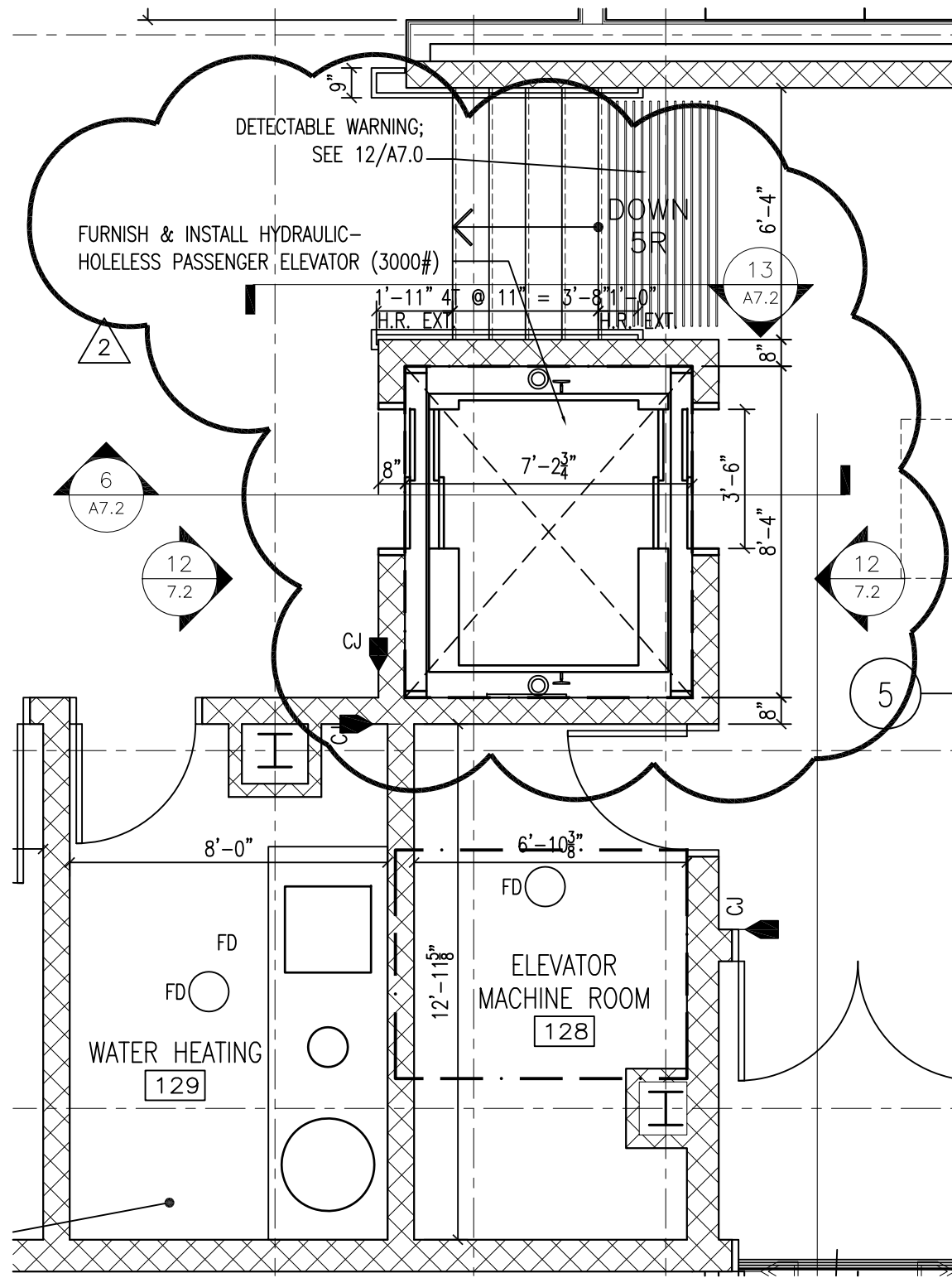
CPS William J. Onahan Elementary
6634 W. Raven Street
Chicago, IL 60631

Drawn By: JC
Checked By: JC
Date: 2012/01/13
© Bauer Latoza Studio, 2011

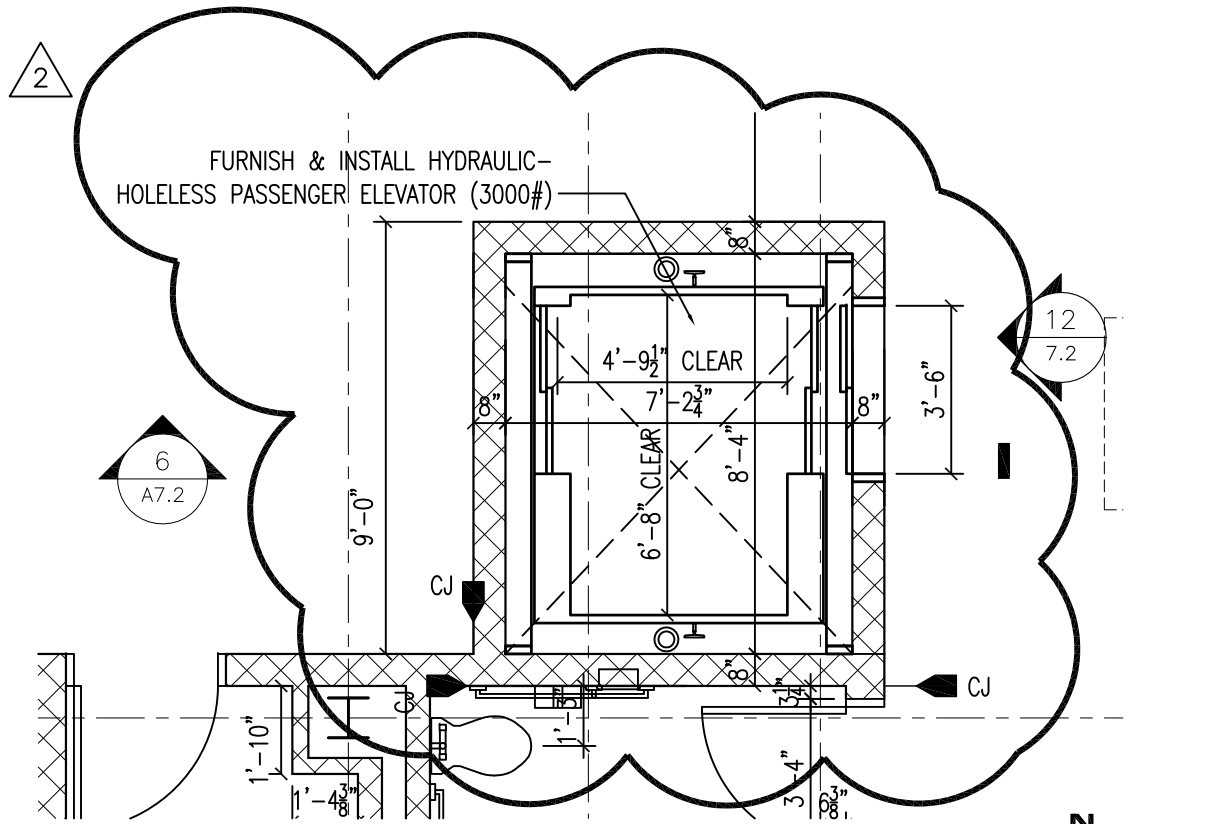
2241 S. Wabash Avenue
Chicago, Illinois 60616
Phone 312.567.1000 / Fax 312.567.9090

BauerLatoza
STUDIO

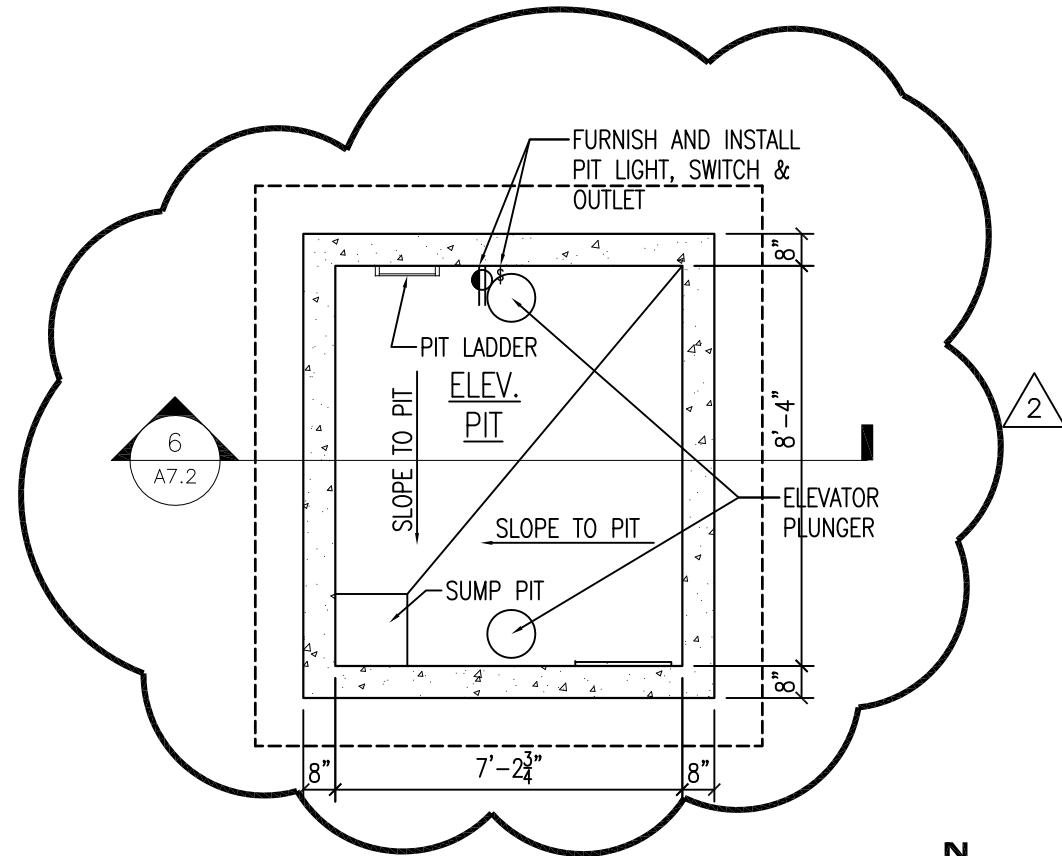
Architecture
Historic Preservation
Landscape Architecture
Urban Design



2 FIRST FLOOR ELEVATOR PARTIAL PLAN
 1/4" = 1'-0"



3 SECOND FLOOR ELEVATOR PARTIAL PLAN
 1/4" = 1'-0"



1 FOUNDATION ELEVATOR PARTIAL PLAN
 1/4" = 1'-0"

CPS William J. Onahan Elementary
 6634 W. Raven Street
 Chicago, IL 60631

ASK-15
 ADDENDUM #2
 Project #: 11-0720
 Dwg File: A7.2

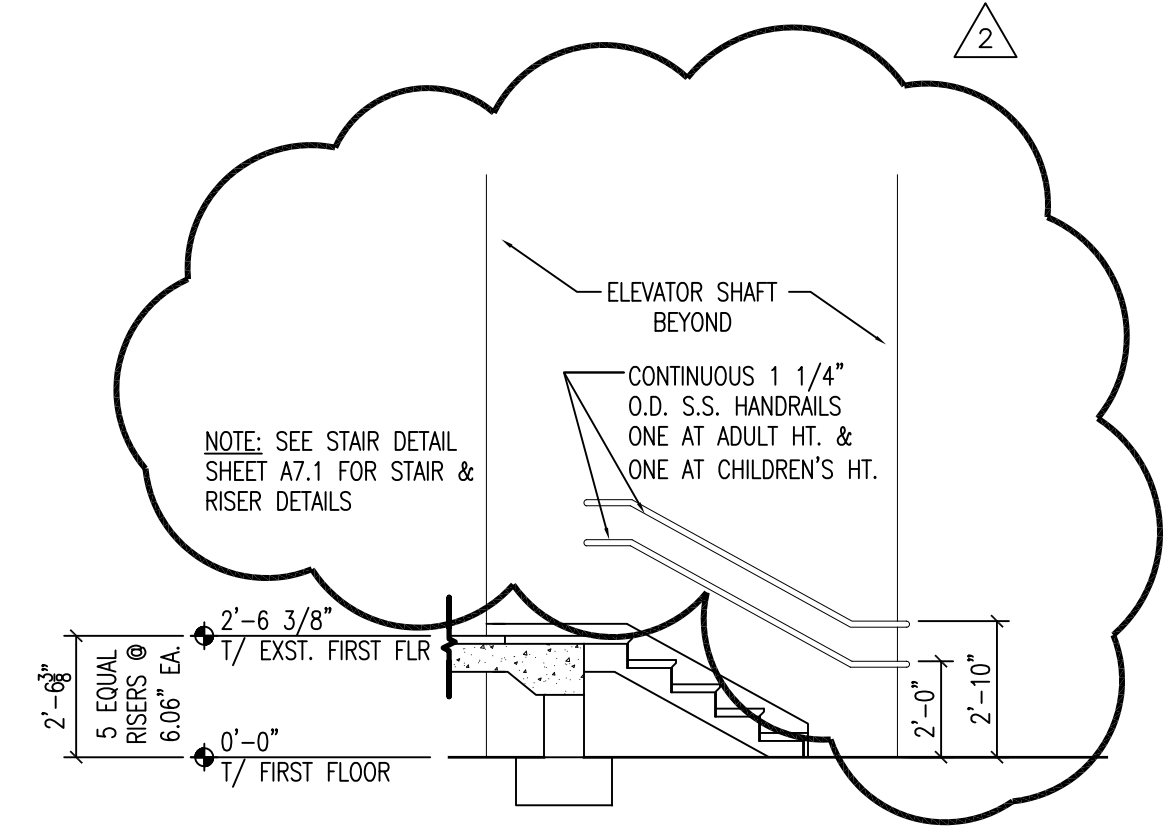
Drawn By: JC
 Checked By: JC
 Date: 2012/01/13
 © Bauer Latoza Studio, 2011

2241 S. Wabash Avenue
 Chicago, Illinois 60616
 Phone 312.567.1000 / Fax 312.567.9090

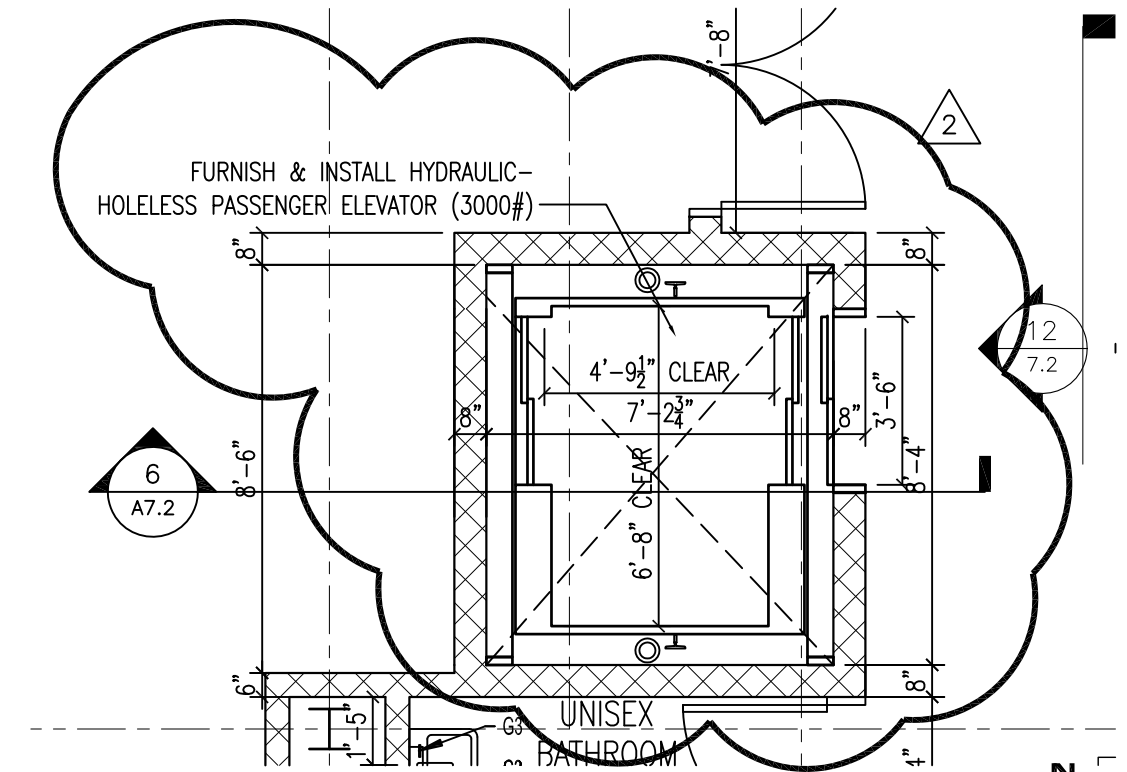
BauerLatoza
 STUDIO

Architecture
 Historic Preservation
 Landscape Architecture
 Urban Design

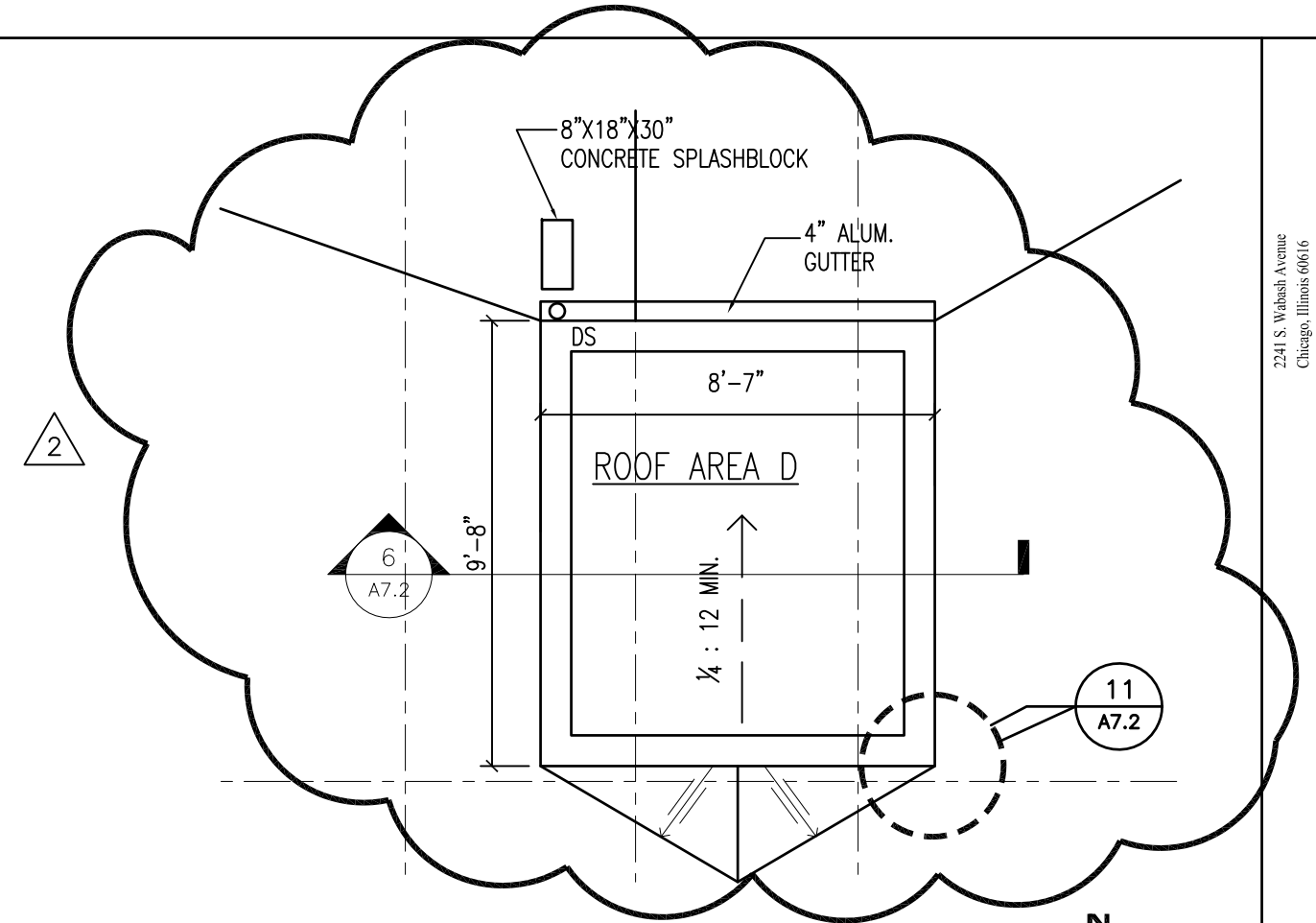
13 SECTION AT FIRST FLOOR STAIR
 1/4" = 1'-0"



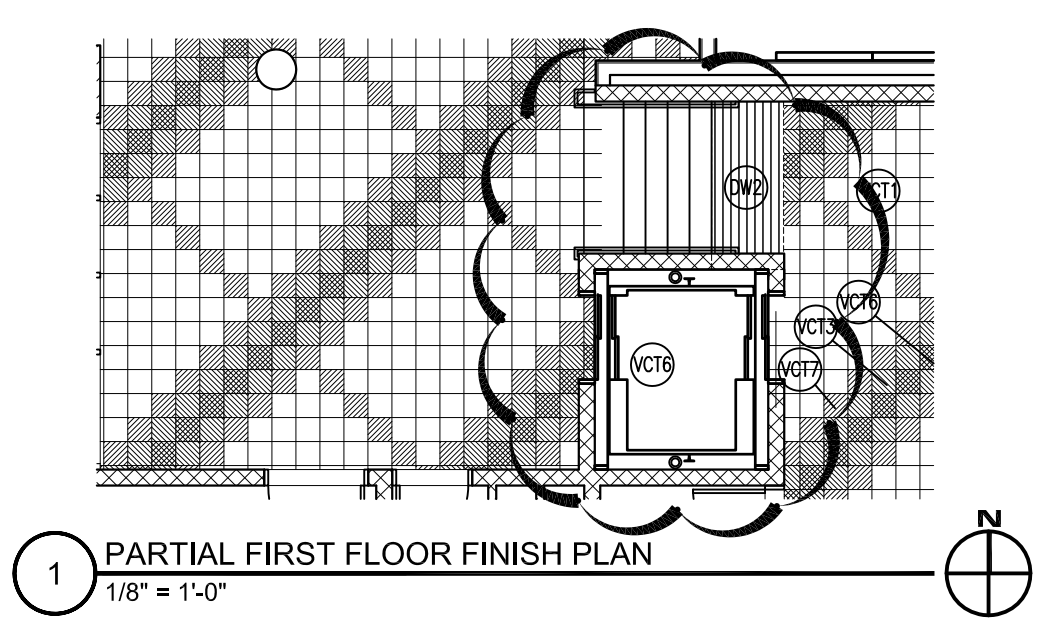
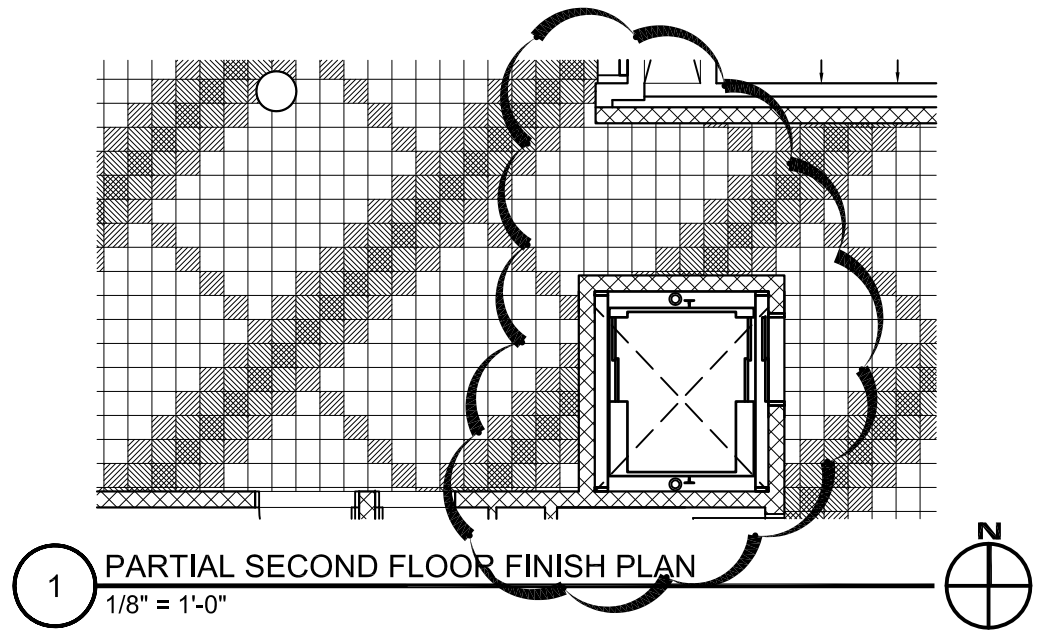
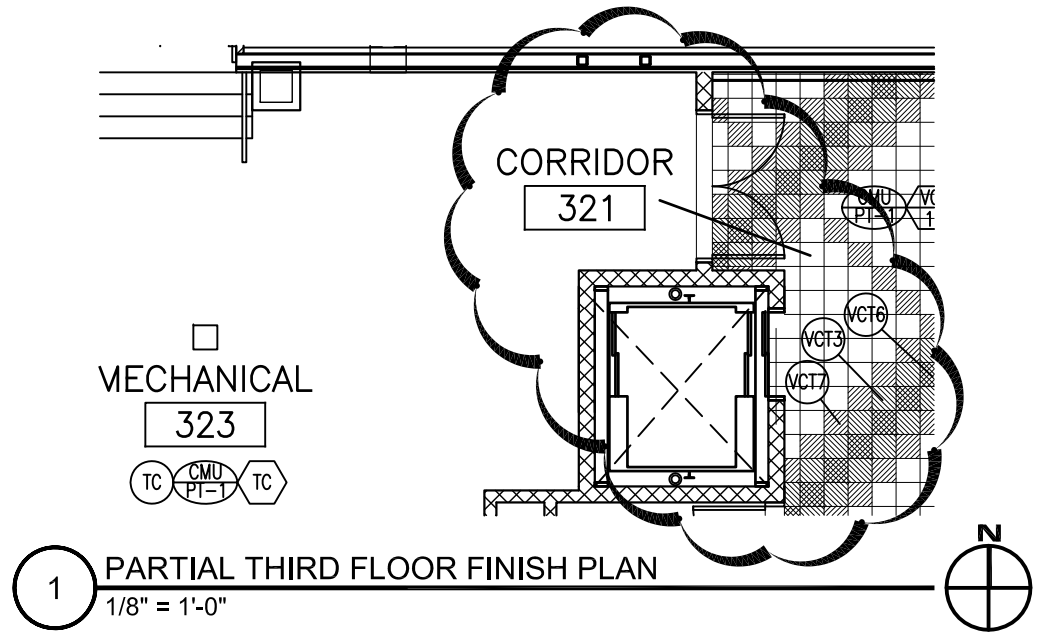
4 THIRD FLOOR ELEVATOR PARTIAL PLAN
 1/4" = 1'-0"



5 ROOF ELEVATOR PARTIAL PLAN
 1/4" = 1'-0"



ASK-16 ADDENDUM #2	CPS William J. Onahan Elementary 6634 W. Raven Street Chicago, IL 60631		
	Project #: 11-0720	Drawn By: JC	Date: 2012/01/13
Dwg File: A7.2	Checked By: JC		© Bauer Latoza Studio, 2011



CPS William J. Onahan Elementary
6634 W. Raven Street
Chicago, IL 60631

ASK-17
ADDENDUM #2

Project #: 11-0720
Dwg File: A12.X

Drawn By: JC
Checked By: JC

Date: 2012/01/13
© Bauer Latoza Studio, 2011

2241 S. Wabash Avenue
Chicago, Illinois 60616
Phone 312.567.1000 / Fax 312.567.9090

BauerLatoza
STUDIO

Architecture
Historic Preservation
Landscape Architecture
Urban Design

OPENING SCHEDULE - FIRST FLOOR

FLOOR	OPNG NO	OPENING					HDW SET	FRAME					GLAZING	LABEL	STC RATING	NOTE KEY
		TYPE	MAT	SIZE				TYPE	MAT	DETAILS						
				WIDTH	HT	THK				HEAD	JAMB	SILL				
	102-1	B	HM	2@3'-0"	7'-2"	1 3/4"	30	2	HM	1	1	--	NA	NR		N7,N12,N13
	121-1	C	HM	3'-0"	7'-2"	1 3/4"	1	1	HM	7	7	--	G3	C		N4
	122-1	C	HM	3'-0"	7'-2"	1 3/4"	1	1	HM	7	7	--	G3	C		N4
	123-1	C	HM	3'-0"	7'-2"	1 3/4"	1	1	HM	7	7	--	G3	C		N4
	124-1	C	HM	3'-0"	7'-2"	1 3/4"	1	1	HM	7	7	--	G3	C		N4
	125-1	C	HM	3'-0"	7'-2"	1 3/4"	1	1	HM	7	7	--	G3	C		N4
	126-1	A	HM	3'-0"	7'-2"	3"	3	1	HM	10	10	3/A12.0	NA	B	STC-55	N8
	127-1	A	HM	3'-0"	7'-2"	1 3/4"	10	1	HM	10	10	3/A12.0	NA	C		
	128-1	A	HM	3'-0"	7'-2"	3"	3	1	HM	10	10	3/A12.0	NA	B	STC-55	N8
	129-1	A	HM	3'-0"	7'-2"	3"	3	1	HM	10	10	3/A12.0	NA	B	STC-50	N8
	130-1	A	HM	4'-0"	7'-2"	3"	3	1	HM	10	10	3/A12.0	NA	B	STC-55	N8
	131-1	E	AL	3'-0"	7'-2"	1 3/4"	48		AL	2/A5.2	2/A5.2 (SIM)	5/A12.0	G2	NR		N1

OPENING SCHEDULE - SECOND FLOOR

FLOOR	OPNG NO	OPENING					HDW SET	FRAME					GLAZING	LABEL	STC RATING	NOTE KEY
		TYPE	MAT	SIZE				TYPE	MAT	DETAILS						
				WIDTH	HT	THK				HEAD	JAMB	SILL				
	202-1	B	HM	2@3'-0"	7'-2"	1 3/4"	30	2	HM	1	1	--	NA	NR		N12,N13
	220-1	C	HM	3'-0"	7'-2"	1 3/4"	1	1	HM	7	7	--	G3	C		N4
	221-1	C	HM	3'-0"	7'-2"	1 3/4"	1	1	HM	7	7	--	G3	C		N4
	222-1	C	HM	3'-0"	7'-2"	1 3/4"	1	1	HM	7	7	--	G3	C		N4
	223-1	C	HM	3'-0"	7'-2"	1 3/4"	1	1	HM	7	7	--	G3	C		N4
	224-1	C	HM	3'-0"	7'-2"	1 3/4"	1	1	HM	7	7	--	G3	C		N4
	224-2	C	HM	3'-0"	7'-2"	1 3/4"	1	1	HM	7	7	--	G3	C		N4
	225-1	C	HM	3'-0"	7'-2"	1 3/4"	1	1	HM	7	7	--	G3	C		N4
	226-1	C	HM	3'-0"	7'-2"	1 3/4"	1	1	HM	7	7	--	G3	C		N4
	226-2	B	HM	2@3'-0"	7'-2"	1 3/4"	19	1	HM	7	7	3/A12.0	NA	B		N8
	227-1	A	HM	4'-0"	7'-2"	1 3/4"	10	1	HM	6	6	5/A12.0	NA	R		
THIRD FLOOR	322-1	A	HM	3'-0"	7'-2"	1 3/4"	10	1	HM	6	6	5/A12.0	NA	C		N7,N10,N11
	323-1	A	HM	2@3'-0"	7'-2"	3"	19	1	HM	10	10	3/A12.0	NA	B	STC-50	N8
	323-2	A	HM	2@3'-0"	7'-2"	1 3/4"	38	2	HM	4	3	7/A6.7	NA	B		N3,N5,N14,N15,N16,N17

2241 S. Wabash Avenue
Chicago, Illinois 60616
Phone 312.567.1000 / Fax 312.567.9690

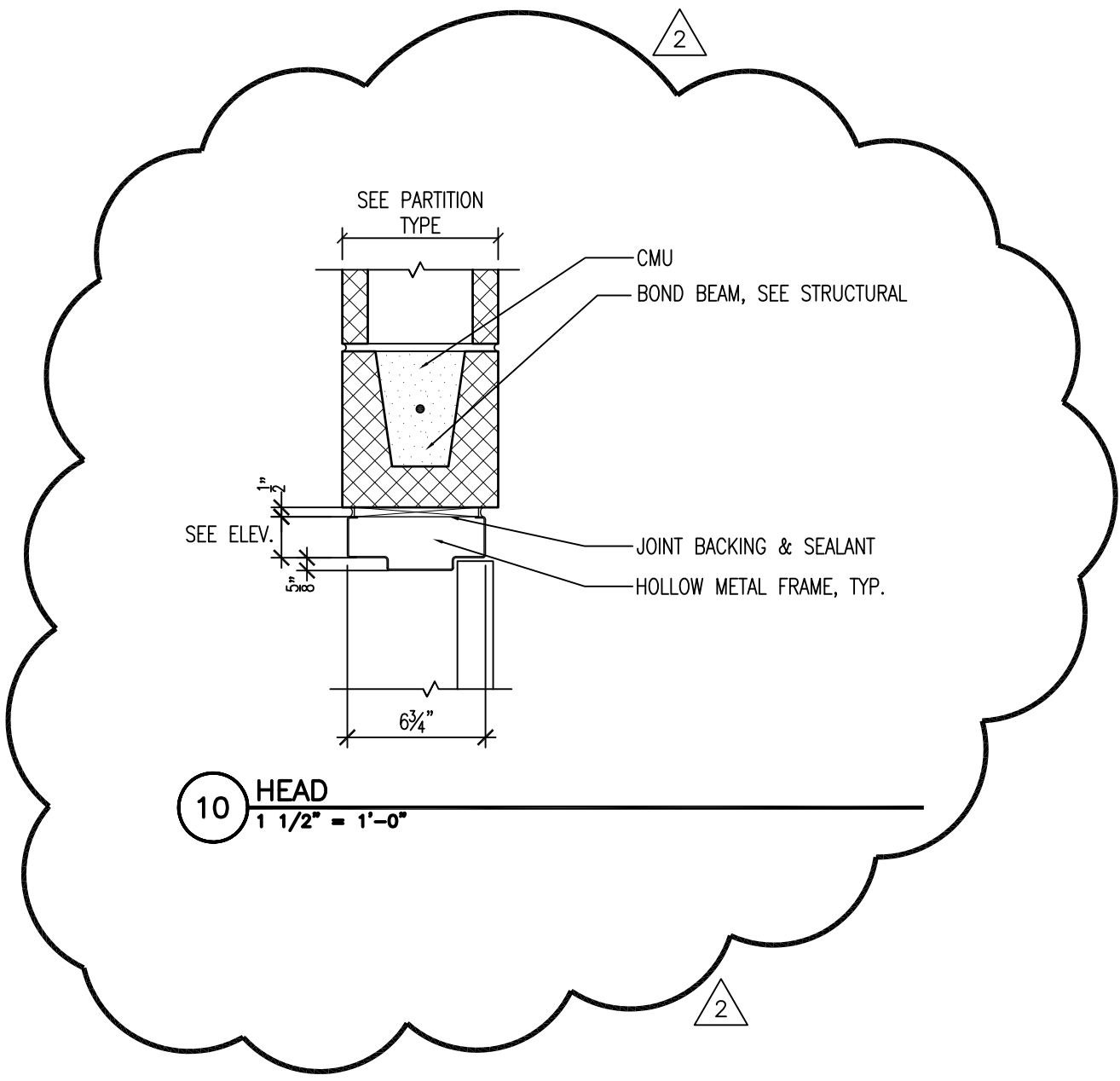
BauerLatoza
STUDIO

Architecture
Historic Preservation
Landscape Architecture
Urban Design

CPS William J. Onahan Elementary
6634 W. Raven Street
Chicago, IL 60631

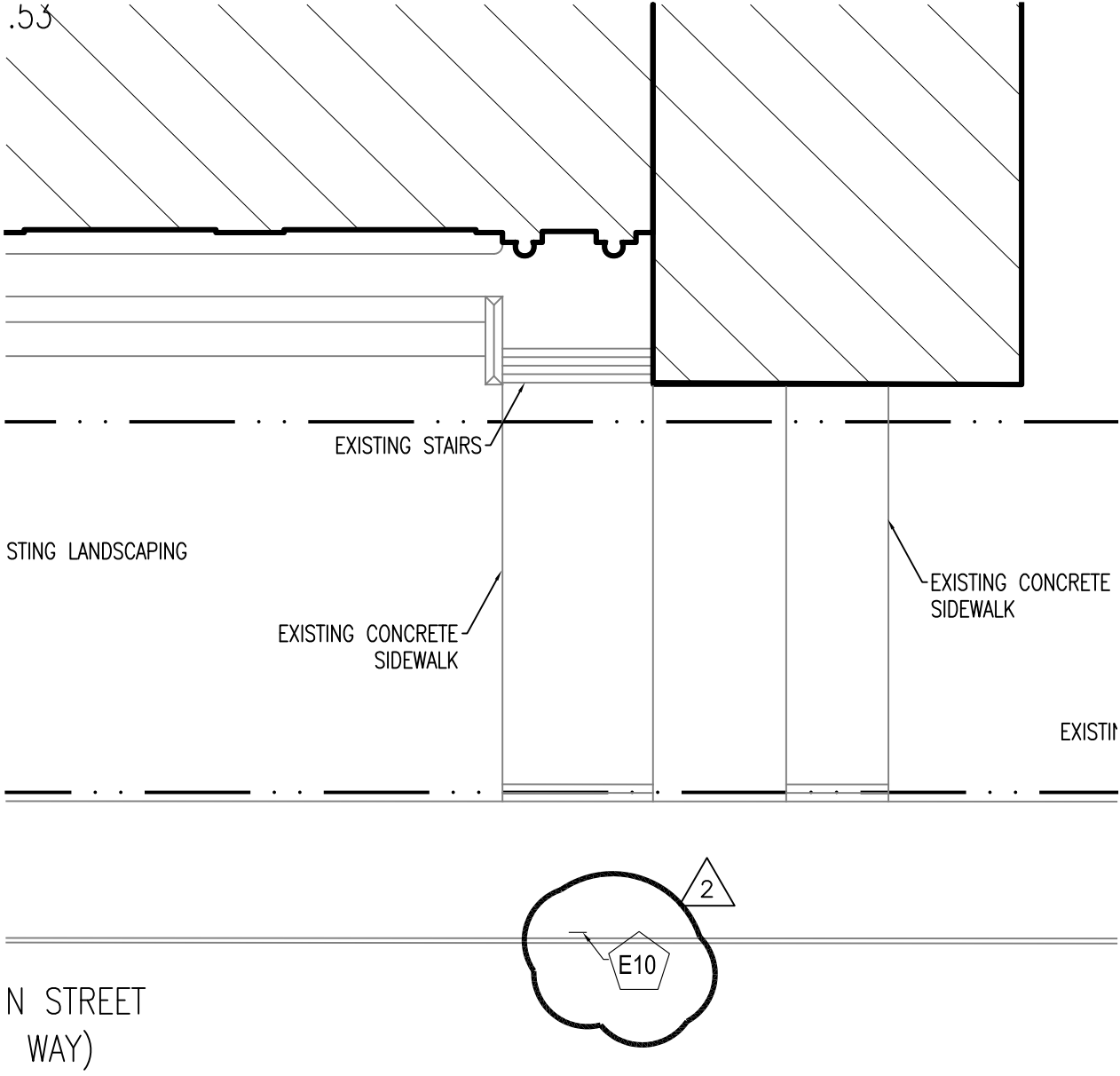
ASK-18

Project #: 11-0720
Dwg File: A11.0
Date: 2012-01-13
Checked By: DD
© Bauer Latoza Studio, 2011



10 HEAD
 1 1/2" = 1'-0"

<h1>ASK-19</h1>	PBC Onahan 6634 W. Raven Street		2241 S. Wabash Avenue Chicago, Illinois 60616 Phone 312.567.1000 / Fax 312.567.9690 BauerLatoza STUDIO <small>Architecture Historic Preservation Landscape Architecture Urban Design</small>
	Project #: 11-0720	Drawn By: DD	
Dwg File: A11.0	Checked By: DD	© Bauer Latoza Studio, 2011	



1 SITE PLAN
1:20

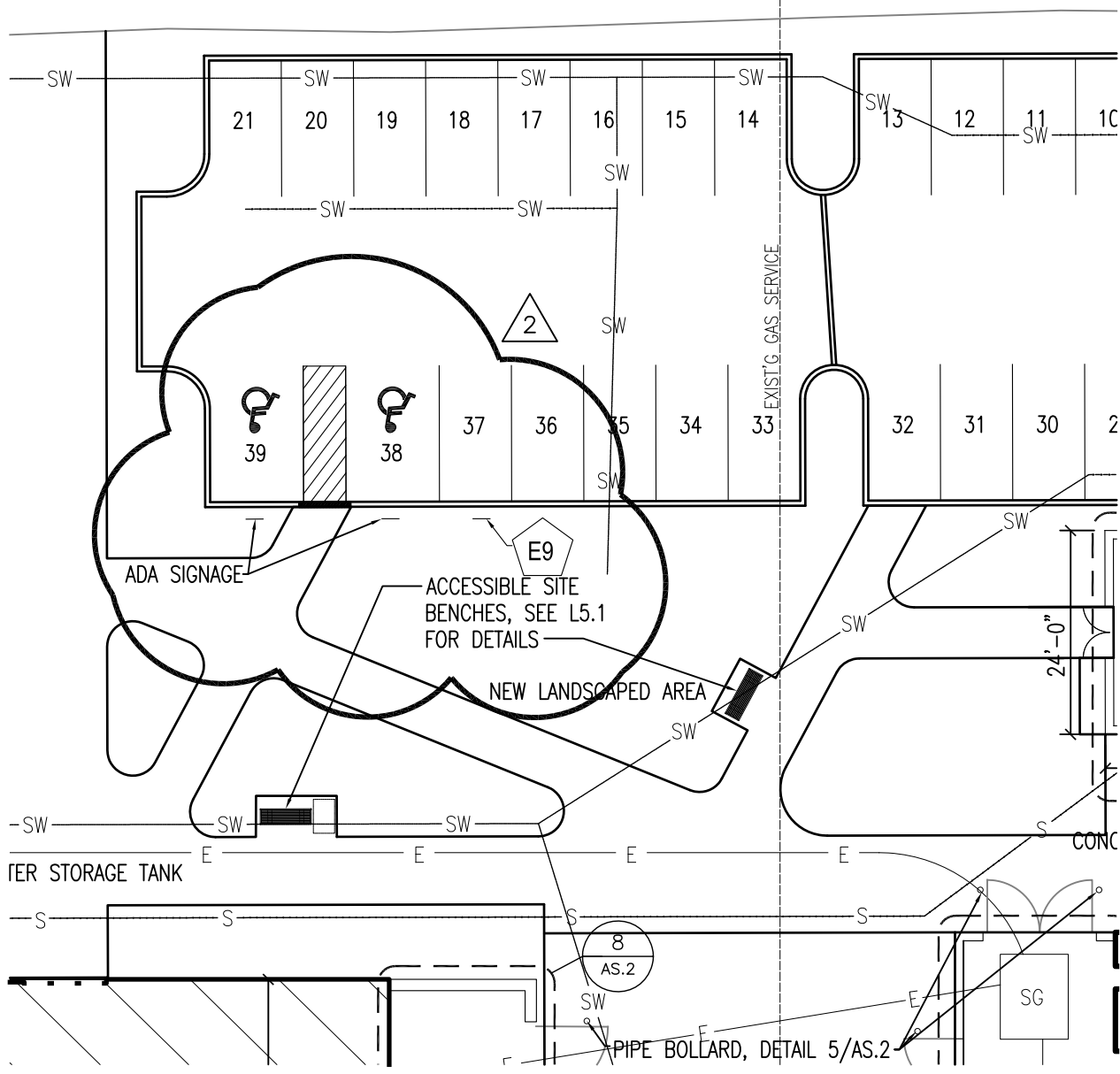
CPS Darwin ADA-MCR
3116 W Belden Ave

2241 S. Wabash Avenue
Chicago, Illinois 60616
Phone 312.567.1000 / Fax 312.567.9690

BauerLatoza
STUDIO

Architecture
Historic Preservation
Landscape Architecture
Urban Design

Project #: 10-1010	Drawn By: DD	Date: 20120113
Dwg File: AS.1	Checked By: DD	© Bauer Latoza Studio, 2011



1 SITE PLAN
1:20

CPS Darwin ADA-MCR
3116 W Belden Ave

2241 S. Wabash Avenue
Chicago, Illinois 60616
Phone 312.567.1000 / Fax 312.567.9690

BauerLatoza
STUDIO

Architecture
Historic Preservation
Landscape Architecture
Urban Design

Date: 20120113

Drawn By: DD

Project #: 10-1010

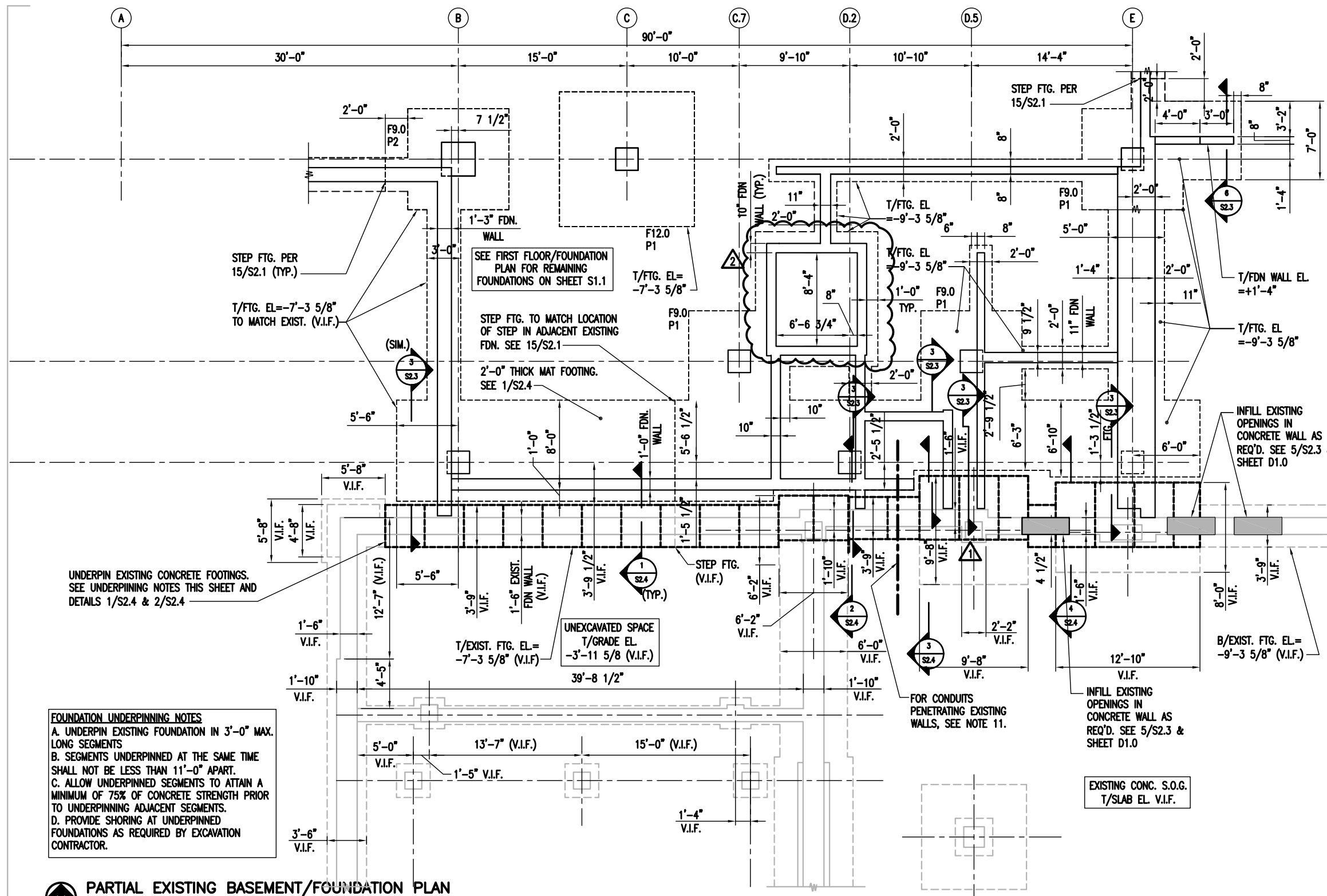
© Bauer Latoza Studio, 2011

Checked By: DD

Dwg File: AS.1

ASK-23

PROJECT: WILLIAM J. ONAHAN
ELEMENTARY SCHOOL
ANNEX 6634 W. RAVEN STREET
CHICAGO, IL 60631
MATRIX #: 11023
ISSUE: ADDENDUM 2
TITLE: PARTIAL EXIST' BSMNT/FDN PLAN
REFERENCE: S1.0
COMMENTS: N.T.S.



FOUNDATION UNDERPINNING NOTES
A. UNDERPIN EXISTING FOUNDATION IN 3'-0" MAX. LONG SEGMENTS
B. SEGMENTS UNDERPINNED AT THE SAME TIME SHALL NOT BE LESS THAN 11'-0" APART.
C. ALLOW UNDERPINNED SEGMENTS TO ATTAIN A MINIMUM OF 75% OF CONCRETE STRENGTH PRIOR TO UNDERPINNING ADJACENT SEGMENTS.
D. PROVIDE SHORING AT UNDERPINNED FOUNDATIONS AS REQUIRED BY EXCAVATION CONTRACTOR.

PARTIAL EXISTING BASEMENT/FOUNDATION PLAN

3/16"=1'-0"

NOTES:

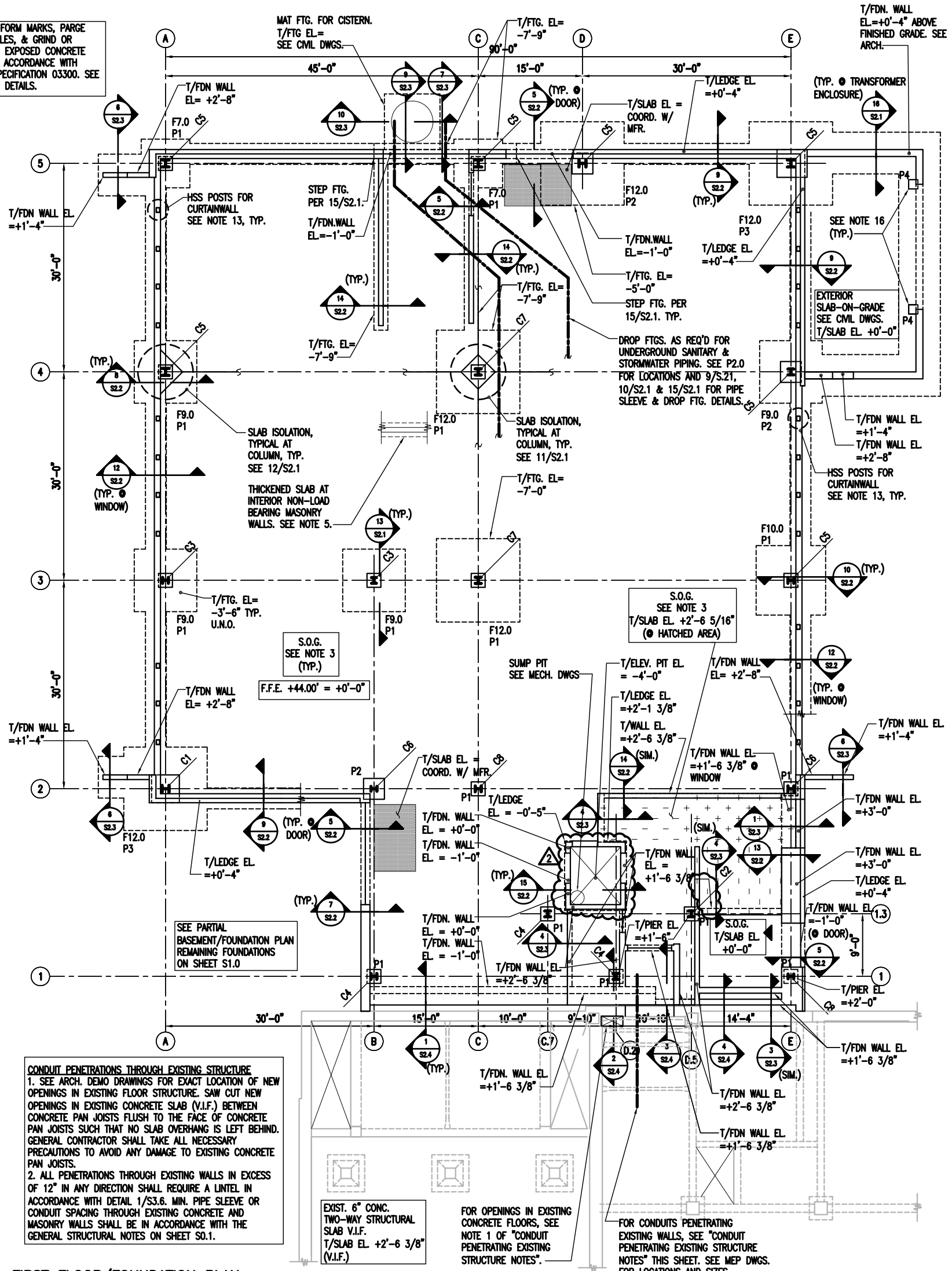
1. VERIFY ALL DIMENSIONS AND ELEVATIONS WITH ARCH. DWGS. PRIOR TO CONSTRUCTION.
2. SEE S0.1 & S0.2 FOR GENERAL STRUCTURAL NOTES.
3. SEE DETAILS 4/S2.1 AND 5/S2.1 FOR TYPICAL CONCRETE WALL REINF. DETAILING INFORMATION.
4. THICKEN SLAB-ON-GRADE AS INDICATED IN DETAIL 2/S2.2, 3/S2.2 OR 4/S2.2 AT ALL NON-LOAD BEARING MASONRY WALLS (U.N.O.). REFER TO ARCHITECTURAL FOR SCOPE AND EXTENTS. SEE DETAILS 2/S3.3, 3/S3.3 OR 4/S3.3 FOR TYPICAL BRACING AT TOP OF MASONRY WALLS.
5. PROVIDE 2-#4 x 4'-0" TOP AND BOTTOM OF CONCRETE SLAB-ON-GRADE AT ALL RE-ENTRANT CORNER LOCATIONS (TYP.).

6. SEE ARCH. AND MEP DRAWINGS FOR CURBS AND MECHANICAL EQUIPMENT PADS. SEE DETAIL 6/S2.1 AND 7/S2.1 FOR INFORMATION. FINAL LOCATIONS & SIZES SHALL BE COORDINATED W/MEP EQUIPMENT MANUFACTURER. VERIFY SIZE AND LOCATION OF SLAB DEPRESSIONS WITH THE ARCHITECTURAL DRAWINGS.
7. T/FTG. EL. = -9'-3 5/8" TO MATCH EXISTING (TYP. U.N.O.); T/FDN. WALL EL. = +2'-8" (TYP. U.N.O.)
8. "Fx" INDICATES CONCRETE FOOTING. SEE SCHEDULE ON SHT. S1.0
9. "Px" INDICATES CONCRETE PIER. SEE SCHEDULE ON SHEET S1.0.
10. SEE ARCH. DEMO DRAWINGS FOR EXACT LOCATION OF NEW OPENINGS IN EXISTING FLOOR STRUCTURE. AT THESE NEW OPENINGS GENERAL CONTRACTOR SHALL SAW CUT EXISTING CONCRETE SLAB (V.I.F.) BETWEEN CONCRETE PAN JOISTS FLUSH TO THE FACE OF CONCRETE PAN JOISTS SUCH THAT NO SLAB OVERHANG IS LEFT BEHIND. GENERAL CONTRACTOR SHALL TAKE ALL NECESSARY PRECAUTIONS TO AVOID ANY DAMAGE TO EXISTING CONCRETE PAN JOISTS.
11. ALL PENETRATIONS THROUGH EXISTING WALLS IN EXCESS OF 12" IN ANY DIRECTION SHALL REQUIRE A LINTEL IN ACCORDANCE WITH DETAIL 1/S3.6. MIN. PIPE SLEEVE OR CONDUIT SPACING THROUGH EXISTING CONCRETE WALLS SHALL BE IN ACCORDANCE WITH THE GENERAL STRUCTURAL NOTES ON SHEET S0.2.

DATE 01/13/12

SSK-18

REMOVE ALL FORM MARKS, PARGE FORM TIE HOLES, & GRIND OR SANDBLASTED EXPOSED CONCRETE SURFACES IN ACCORDANCE WITH CONCRETE SPECIFICATION 03300. SEE ARCH. FINISH DETAILS.



FIRST FLOOR/FOUNDATION PLAN

SCALE 1/8"=1'-0"

NOTES:

1. VERIFY ALL DIMENSIONS AND ELEVATIONS WITH ARCH. DWGS. PRIOR TO CONSTRUCTION.
2. SEE S0.1 & S0.2 FOR GENERAL STRUCTURAL NOTES.
3. S.O.G. INDICATES 5" CONCRETE SLAB-ON-GRADE W/4x4-W4.0xW4.0 WWF OVER VAPOR BARRIER OVER 2 1/2" ASTM C578 "XEPS" INSULATION OVER 6" GRANULAR FILL OVER ENGINEERED FILL AS REQUIRED IN SOIL REPORT. (TYP.) SEE TYPICAL DETAILS 1/S2.1, 2/S2.1 AND 3/S2.1. PROVIDE CONSTRUCTION/CONTROL JOINTS AT 15'-0" MAXIMUM IN EA. DIRECTION (TYP.). SUBMIT JOINT LAYOUT FOR REVIEW PRIOR TO PLACING SLAB-ON-GRADE. COORDINATE JOINT LOCATIONS WITH ARCH. DWGS. T/SLAB EL. +0'-0" U.N.O.
4. SEE DETAILS 4/S2.1 AND 5/S2.1 FOR TYPICAL CONCRETE WALL REINF. DETAILING INFORMATION.
5. THICKEN SLAB-ON-GRADE AS INDICATED IN DETAIL 2/S2.2, 3/S2.2 OR 4/S2.2 AT ALL NON-LOAD BEARING MASONRY WALLS (U.N.O.). REFER TO ARCHITECTURAL FOR SCOPE AND EXTENTS. SEE DETAILS 2/S3.3, 3/S3.3 AND 4/S3.3 FOR TYPICAL BRACING AT TOP OF MASONRY WALLS.
6. PROVIDE 2-#4 x 4'-0" TOP AND BOTTOM OF CONCRETE SLAB-ON-GRADE AT ALL RE-ENTRANT CORNER LOCATIONS (TYP.).
7. SEE ARCH. AND MEP DRAWINGS FOR CURBS AND MECHANICAL EQUIPMENT PADS. SEE DETAIL 6/S2.1 AND 7/S2.1 FOR INFORMATION. FINAL LOCATIONS & SIZES SHALL BE COORDINATED W/MEP EQUIPMENT MANUFACTURER. VERIFY SIZE AND LOCATION OF SLAB DEPRESSIONS WITH THE ARCHITECTURAL DRAWINGS.
8. [Hatched Area] INDICATES DEPRESSED SLAB. SEE 8/S2.1 FOR DETAIL. COORD. W/ARCH. DWG. FOR LOCATIONS. GENERAL CONTRACTOR TO COORDINATE WITH EQUIPMENT PROVIDERS FOR FINAL PLAN DIMENSIONS AND DEPTH OF DEPRESSIONS.
9. SEE MEP DRAWINGS FOR LOCATIONS AND ELEVATIONS OF FOUNDATION WALL PENETRATIONS. SEE DETAIL 9/S2.1 AND 10/S2.1 FOR ADD'L REINF. REQUIREMENT.
10. "Cx" INDICATES STEEL COLUMN. SEE S1.0 FOR COLUMN SCHEDULE. SEE ARCH. DWGS. FOR SIZE AND EXTENT OF FIREPROT. COLUMN ENCASEMENT.
11. VERTICAL & HORIZONTAL REBAR ALONG THE EXTERIOR FACE OF THE FOUNDATION WALL EXPOSED TO WEATHER SHALL BE EPOXY COAT.
12. T/FDN. WALL EL. = +2'-8" (TYP. U.N.O.); T/FDN. WALL EL. @ DOOR = -1'-0" (U.N.O.); T/FTG. EL. = -3'-6" (TYP. U.N.O.); T/LEDGE EL. +0'-4" (TYP. U.N.O.)
13. SEE SHEET S6.1 FOR WINDOW/WINDOW WALL SUPPORT FRAMING ELEVATIONS AND INFORMATION. SEE DETAIL 11/S2.2 FOR HSS POST CONNECTION TO FDN. WALL.
14. "Px" INDICATES CONCRETE PIER. SEE PIER SCHEDULE ON SHEET S1.0. T/PIER EL. -1'-0" (TYP. U.N.O.)
15. "Fx" INDICATES CONCRETE FOOTING. SEE FOOTING SCHEDULE ON SHEET S1.0. T/FTG. EL. -3'-6" (TYP. U.N.O.)
16. POSTS, PIER SIZES, AND FOOTINGS SHOWN ON PLAN FOR GATE POSTS ARE FOR BID PURPOSES ONLY. CONTRACTOR SHALL COORDINATE FINAL SIZES WITH GATE POST PROVIDER AND POUR CONCRETE PIERS FOR THE GATE POST INTEGRALLY WITH THE FOUNDATION WALL/FTG. SEE 1/S2.2 2/S2.3 FOR ADD'L INFORMATION. T/PIER EL. +0'-0".

MATRIX

Matrix Engineering Corporation
 Structural Engineers
 33 W. Jackson Blvd 4th floor
 Chicago Illinois 60604-3901
 v 312 427 1200
 f 312 427 4220

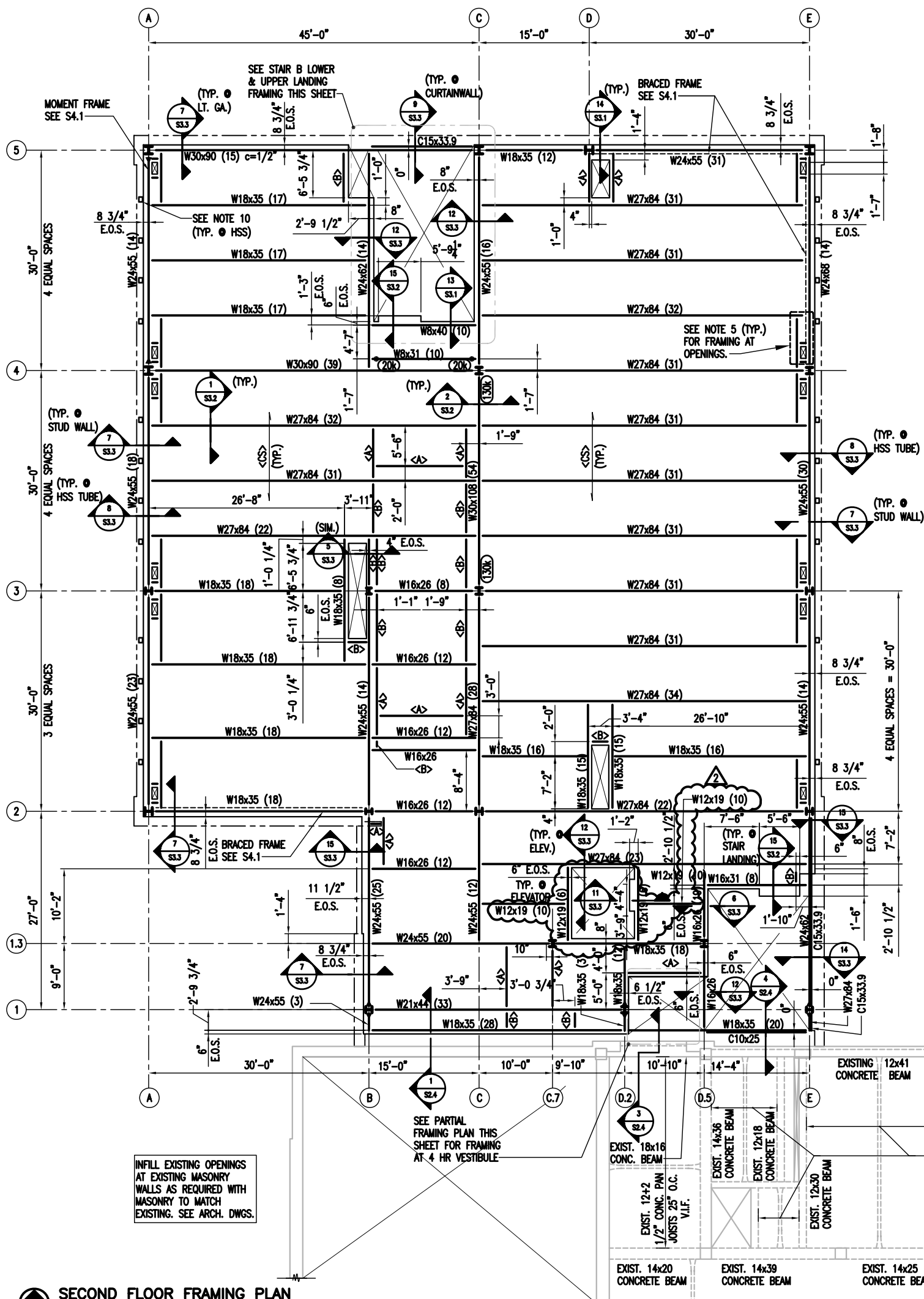
PROJECT: WILLIAM J. ONAHAN ELEMENTARY SCHOOL ANNEX 6634 W. RAVEN STREET CHICAGO, IL 60631
 MATRIX #: 11023

ISSUE: ADDENDUM 2
 TITLE: FIRST FLOOR/FOUNDATION PLAN
 REFERENCE: S1.1

COMMENTS: 1/8"=1'-0"

SSK-19

DATE 01/13/12



SECOND FLOOR FRAMING PLAN
1/8"=1'-0"

NOTES:

1. VERIFY ALL DIMENSIONS AND ELEVATIONS WITH ARCH. DWGS. PRIOR TO CONSTRUCTION. COORDINATE SIZE AND LOCATION OF ALL OPENINGS/PENETRATIONS WITH ARCHITECTURAL AND MECHANICAL DRAWINGS. TYPICAL SLAB EDGES AT SLAB OPENINGS/PENETRATIONS SHALL BE 6" OFF THE CENTERLINE OF STEEL FRAMES, U.N.O.
2. SEE S0.1 & S0.2 FOR GENERAL STRUCTURAL NOTES. FOR TYPICAL STEEL CONNECTIONS AND TYPICAL SLAB ON DECK CONSTRUCTION, SEE SHEETS S3.1 AND S3.2.
3. CS INDICATES 2"x18GA. GALV. COMPOSITE FLOOR DECK W/3 1/4" LIGHT WEIGHT CONCRETE (5 1/4" TOTAL THICKNESS) W/6x6 W1.4xW1.4 WWF.
4. T/SLAB EL.=+17'-1 1/2" U.N.O.
5. SEE DETAILS 12/S3.2, 13/S3.2 AND 14/S3.2 FOR TYPICAL FRAMING AT OPENINGS. COORDINATE SIZE AND LOCATION OF ALL OPENINGS/PENETRATIONS WITH ARCHITECTURAL AND MECHANICAL DRAWINGS.
6. <A> INDICATES W12x22 STEEL BEAM WITH SHEAR STUDS @ 1'-0" O.C. SEE DETAIL 1/S3.3 FOR ADDITIONAL INFORMATION AT NON-LOAD BEARING MASONRY WALLS ON DECK.
7. INDICATES W8x10 STEEL BEAM WITH SHEAR STUDS (WHERE APPLICABLE) @ 1'-0" AT NON-LOAD BEARING MASONRY WALLS ON DECK. SEE DETAIL 1/S3.3 FOR ADDITIONAL INFORMATION AT NON-LOADING BEARING MASONRY WALLS ON DECK.
8. COORDINATE EDGE OF CONCRETE SLAB AT STAIR SHAFT OPENING WITH STAIR MANUFACTURER TO ACCOMMODATE CLEARANCES AS INDICATED ON ARCH. DWGS. PLACE CONCRETE FILL IN THIS AREA AFTER STAIR ERECTION. CONNECT STAIR SUPPORT TO STEEL BEAM AS PIN CONNECTION (BY STAIR MANUFACTURER). SEE DETAIL 15/S3.2 FOR MORE INFORMATION.
9. SEE ARCH. AND MEP DRAWINGS FOR CURBS AND MECHANICAL EQUIPMENT PADS. SEE DETAIL 6/S2.1 AND 7/S2.1 FOR INFORMATION. FINAL LOCATIONS & SIZES SHALL BE COORDINATED W/MEP EQUIPMENT MANUFACTURER.
10. SEE SHEET S6.1 FOR WINDOW/WINDOW WALL SUPPORT FRAMING ELEVATIONS AND INFORMATION.
11. SEE DETAILS 2 THROUGH 6 ON SHEET S3.3 FOR TYPICAL CMU PARTITION WALL BRACING DETAILS.
12. SEE ARCH. DEMO DRAWINGS FOR EXACT LOCATION OF NEW OPENINGS IN EXISTING FLOOR STRUCTURE. SAW CUT NEW OPENINGS IN EXISTING CONCRETE SLAB (V.I.F.) BETWEEN CONCRETE PAN JOISTS FLUSH TO THE FACE OF CONCRETE PAN JOISTS SUCH THAT NO SLAB OVERHANG IS LEFT BEHIND. GENERAL CONTRACTOR SHALL TAKE ALL NECESSARY PRECAUTIONS TO AVOID ANY DAMAGE TO EXISTING CONCRETE PAN JOISTS.

STEEL BEAM KEY PLAN:

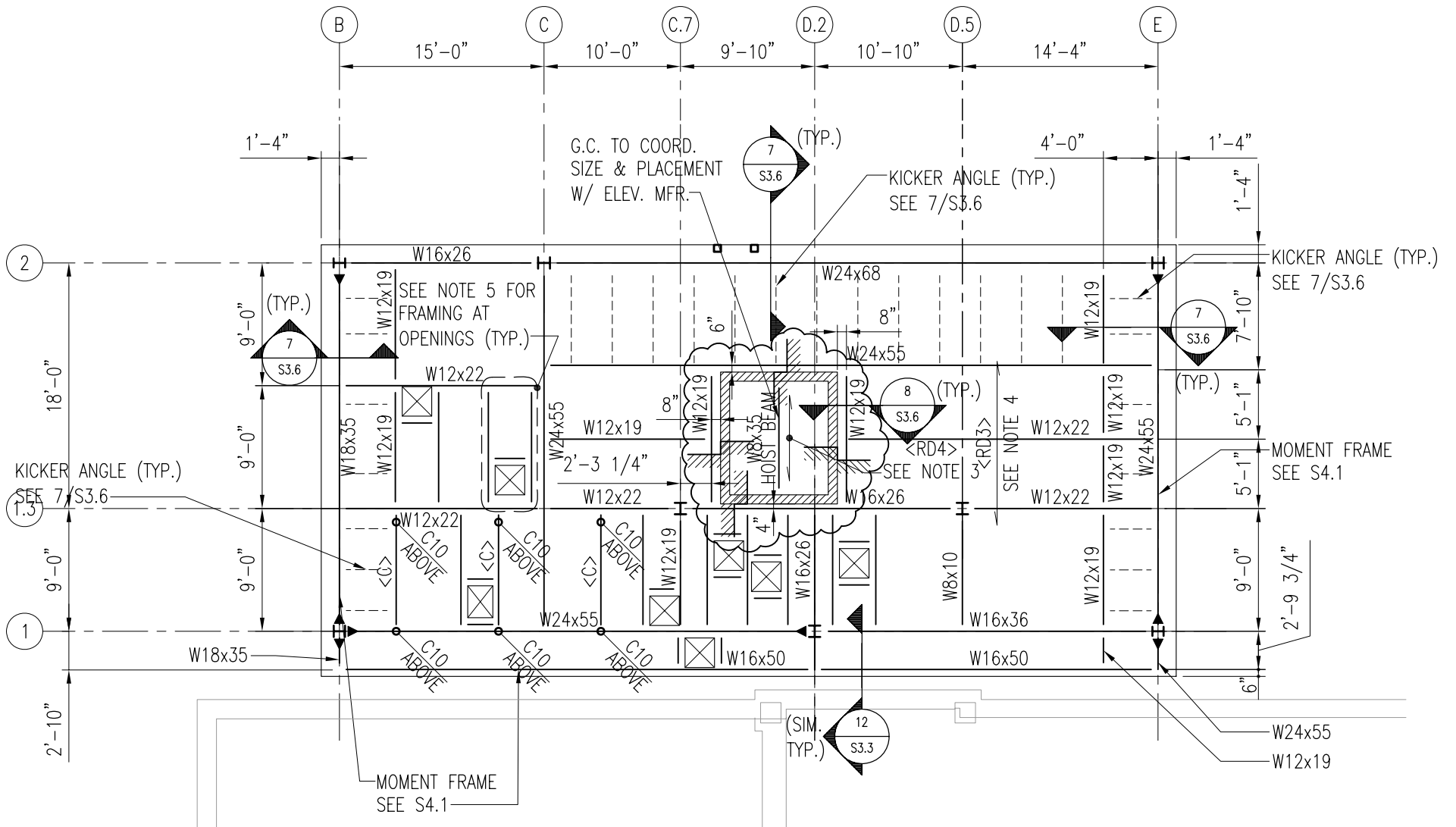
- REQUIRED CAMBER (NONE IF OMITTED)
- DEVIATION OF T/W SHAPE ELEV. FROM TYPICAL
- NUMBER OF SHEAR STUDS (SEE GENERAL NOTES IF NONE INDICATED)
- SIZE
- W18x40 (50) [-1-1/2"] c=1" XXXX
- INDICATES RIGID MOMENT CONNECTION
- INDICATES REQD. BOTTOM FLANGE BRACE
- END SHEAR REACTION IN KIPS (USE SCHEDULED REACTION IF NONE INDICATED)
- INDICATES BEAM PENETRATION. COORD LOCATION SIZE W/MEP
- DENOTES AXIAL AX-COMNECTION AXIAL FORCE IN KIP
- DENOTES RIGID TORSIONAL CONNECTION



PROJECT: WILLIAM J. ONAHAN ELEMENTARY SCHOOL ANNEX 6634 W. RAVEN STREET CHICAGO, IL 60631
 MATRIX #: 11023
 ISSUE: ADDENDUM 2
 TITLE: AS NOTED
 REFERENCE: S1.2
 COMMENTS: 1/16"=1'-0"

SSK-20

DATE 01/13/12



PENTHOUSE ROOF FRAMING PLAN ANNEX

1/8"=1'-0"

NOTES:

MATRIX

Matrix Engineering Corporation
Structural Engineers
33 W. Jackson Blvd 4th floor
Chicago Illinois 60604-3901
v 312 427 1200
f 312 427 4220

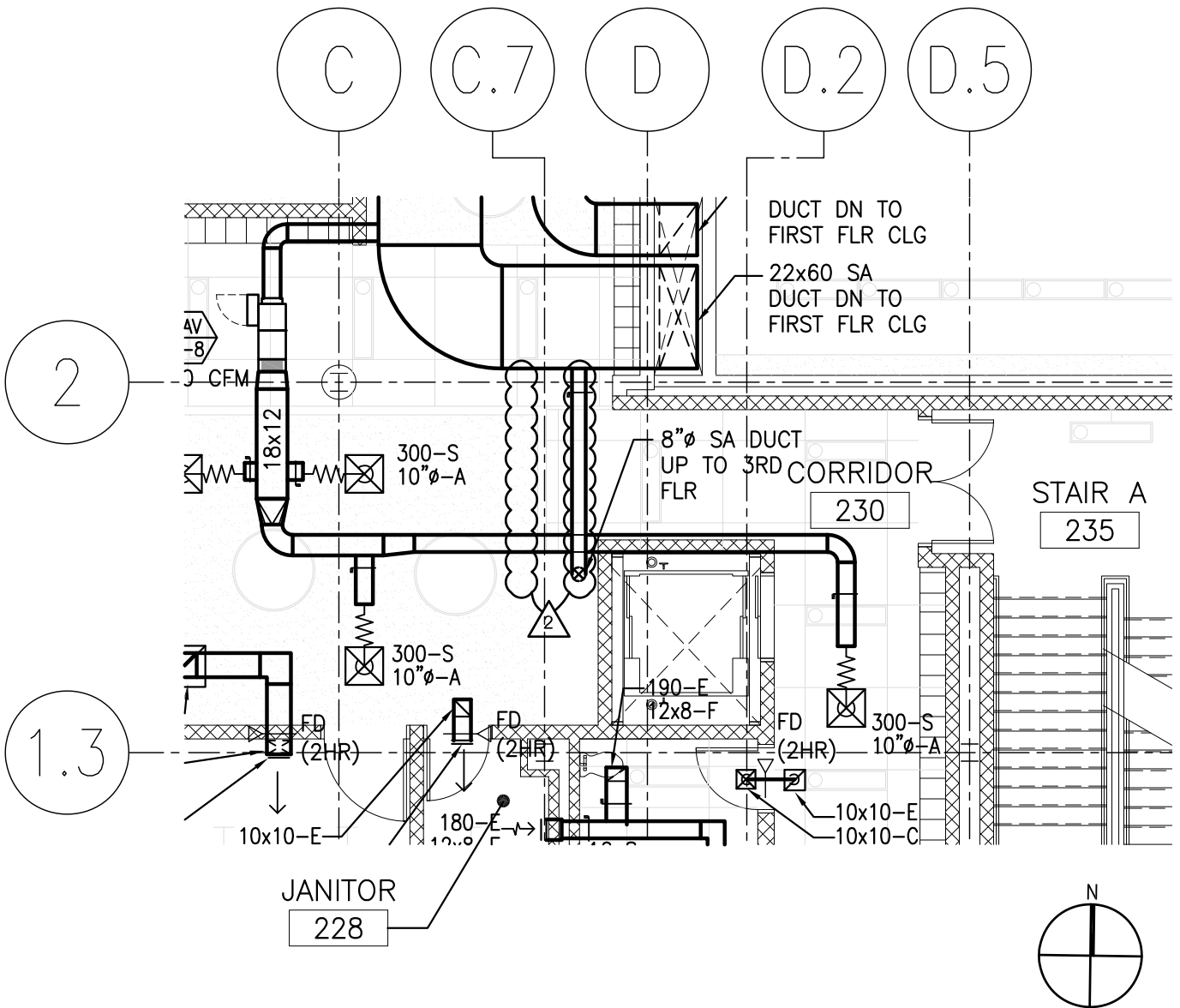
PROJECT: WILLIAM J. ONAHAN ELEMENTARY SCHOOL ANNEX 6634 W. RAVEN STREET CHICAGO, IL 60631
MATRIX #: 11023

ISSUE: ADDENDUM 2 2
TITLE: PENTHOUSE ROOF FRAMING PLAN ANNEX
REFERENCE: S1.3

COMMENTS: 3/32"=1'-0"

SSK-22

DATE: 01/13/12



DYNACEPT, INC.
ENGINEERS • CONSULTANTS

2250 E DEVON AVE, SUITE 218
DES PLAINES, ILLINOIS 60018-4509
TELE. (847) 299-4848
FAX. (847) 299-4858

William J. Onahan Elementary Annex

6634 W. RAVEN STREET
CHICAGO, IL 60631

Reference Sheet

M1.2A

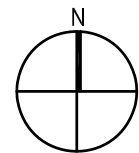
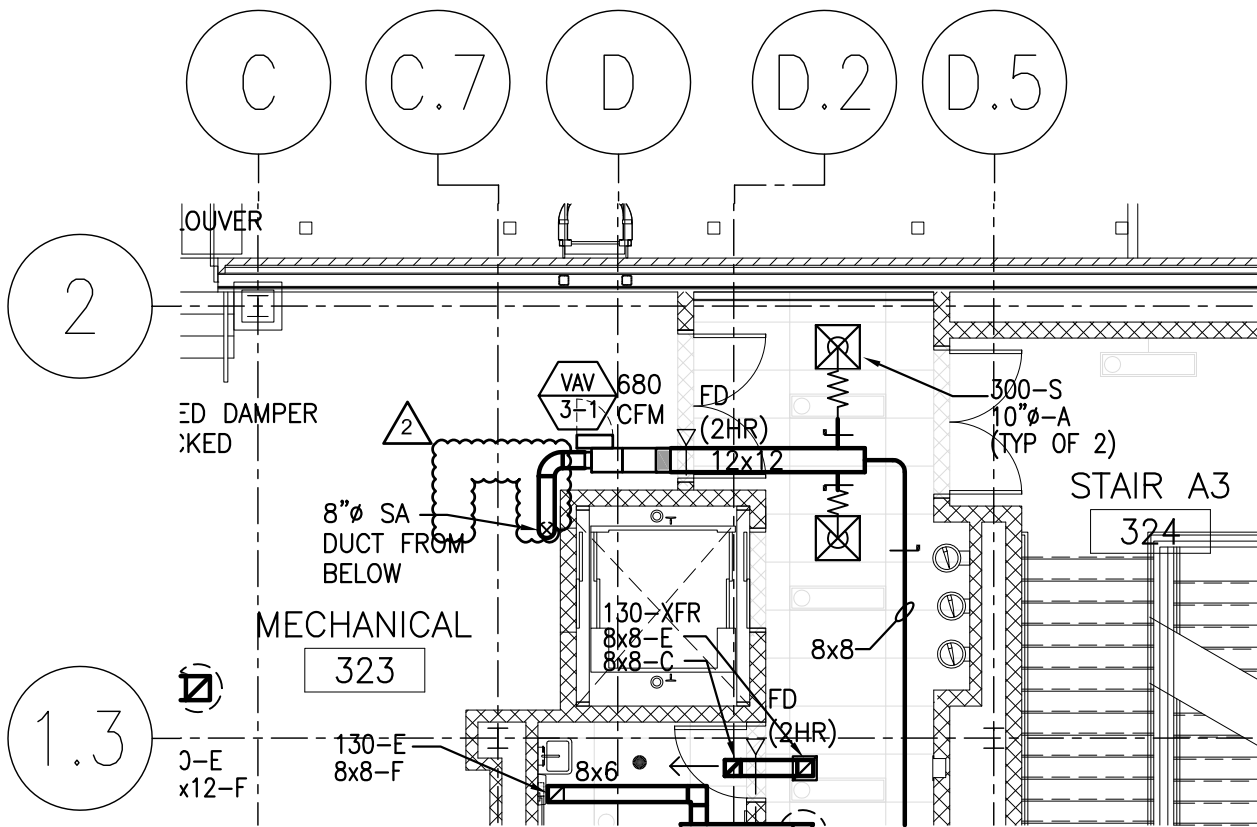
DATA: 01/13/11

SCALE: 1/8"-1'-0"

PBC Contract No. 05550

MSK-1

ADDENDUM #2



DYNACEPT, INC.
ENGINEERS • CONSULTANTS

2250 E DEVON AVE, SUITE 218
DES PLAINES, ILLINOIS 60018-4509
TELE. (847) 299-4848
FAX. (847) 299-4858

William J. Onahan Elementary Annex

6634 W. RAVEN STREET
CHICAGO, IL 60631

Reference Sheet

M1.3A

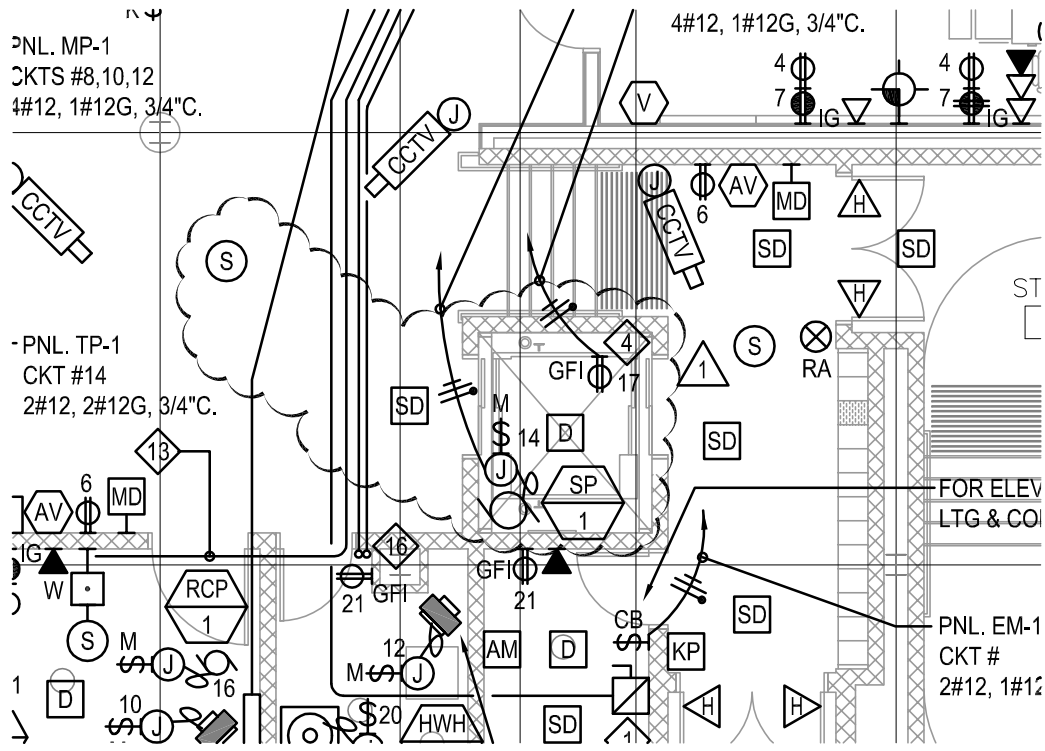
DATA: 01/13/11

SCALE: 1/8"-1'-0"

PBC Contract No. 05550

MSK-2

ADDENDUM #2



REFER TO SHEET E3.1

1 ADDENDUM 2 / ELEVATOR CHANGE

WILLIAM J. ONAHAN ELEMENTARY SCHOOL ANNEX
6634 W RAVEN STREET CHICAGO, IL 60631

FIRST FLOOR PLAN POWER &
SPECIAL SYSTEMS - NEW WORK

SHEET
NO.:

DRAWN
AA
CHECKED
AK

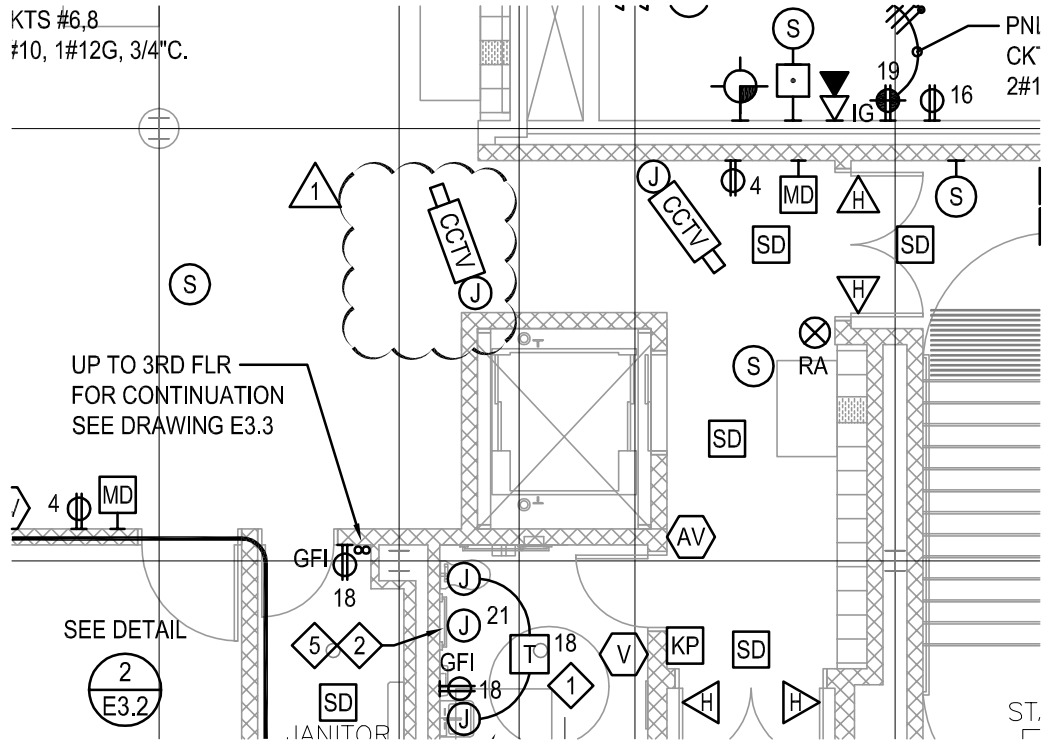
DATE
01/13/12
JOB NO.
7222



Henneman Engineering Inc.

Email: info@henneman.com
Website: http://www.henneman.com
© 2010 Henneman Engineering Inc.

ESK
05



REFER TO SHEET E3.2

1 ADDENDUM 2 / ELEVATOR CHANGE

WILLIAM J. ONAHAN ELEMENTARY SCHOOL ANNEX
6634 W RAVEN STREET CHICAGO, IL 60631

SECOND FLOOR PLAN POWER &
SPECIAL SYSTEMS - NEW WORK

SHEET
NO.:

DRAWN
AA
CHECKED
AK

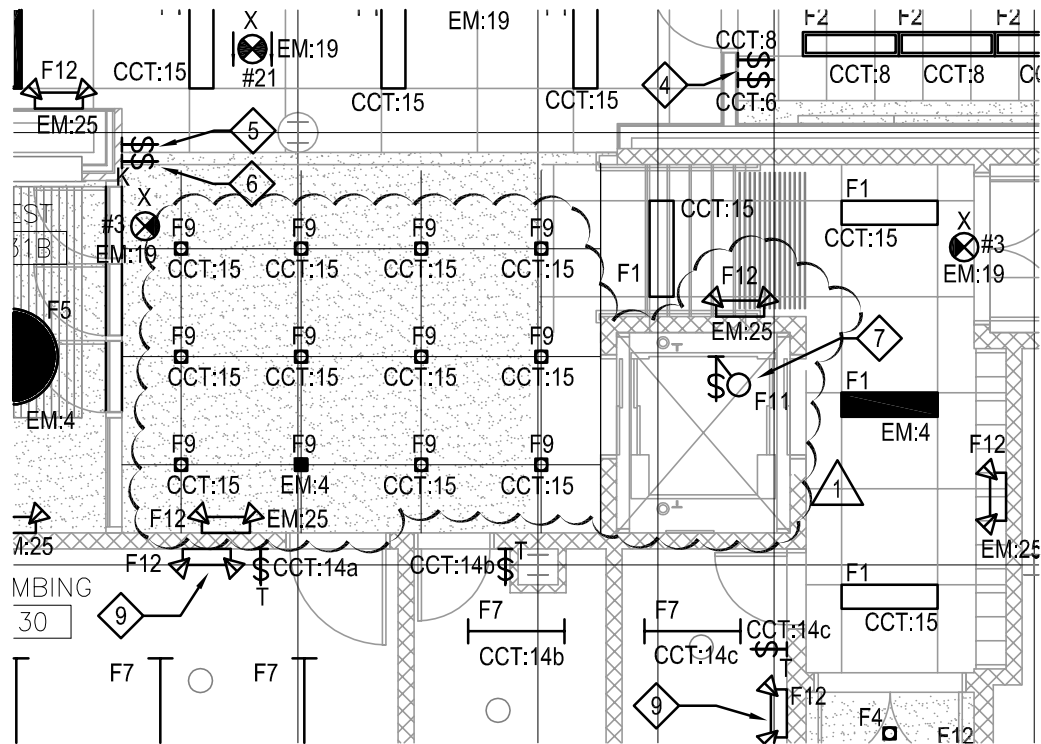
DATE
01/13/12
JOB NO.
7222



Henneman Engineering Inc.

Email: info@henneman.com
Website: http://www.henneman.com
© 2010 Henneman Engineering Inc.

ESK
06



REFER TO SHEET E4.1

△ ADDENDUM 2 / ELEVATOR CHANGE

WILLIAM J. ONAHAN ELEMENTARY SCHOOL ANNEX
6634 W RAVEN STREET CHICAGO, IL 60631

FIRST FLOOR PLAN
LIGHTING NEW WORK

SHEET
NO.:

DRAWN
AA
CHECKED
AK

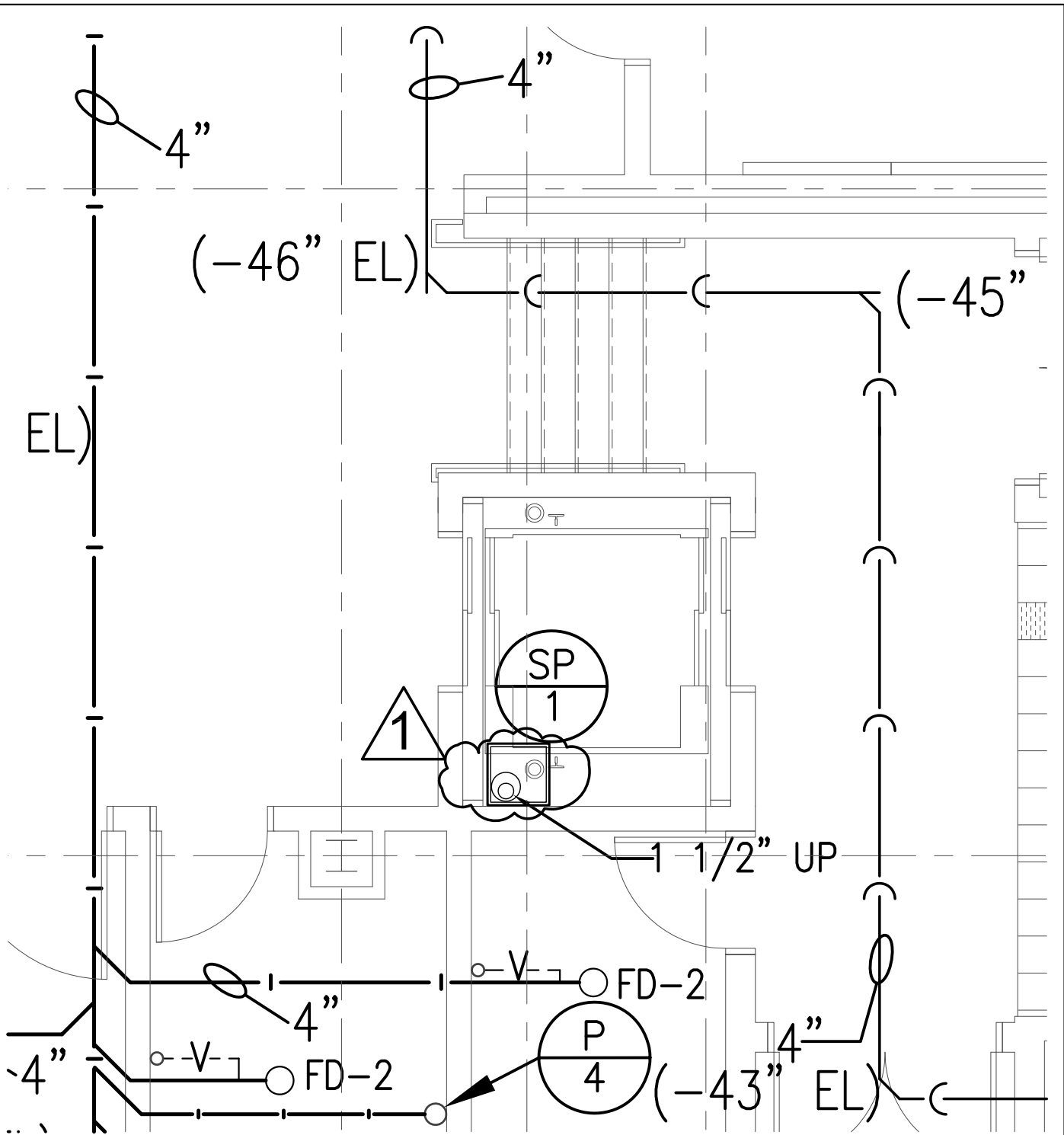
DATE
01/13/12
JOB NO.
7222



Henneman Engineering Inc.

Email: info@henneman.com
Website: http://www.henneman.com
© 2010 Henneman Engineering Inc.

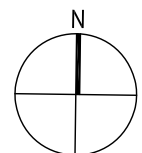
ESK
07



UNDERGROUND SANITARY AND STORM PLUMBING PLAN ANNEX

1
P1.0

SCALE: N.T.S.



ADDENDUM 2

WILLIAM J. ONAHAN ELEMENTARY

6634 W RAVEN ST.

CHICAGO IL

DATE

1/13/12

SKETCH NUMBER

PSK-1

DYNACEPT INC. ENGINEERS

2250 DEVON AVENUE

DES PLAINES, ILLINOIS 60018

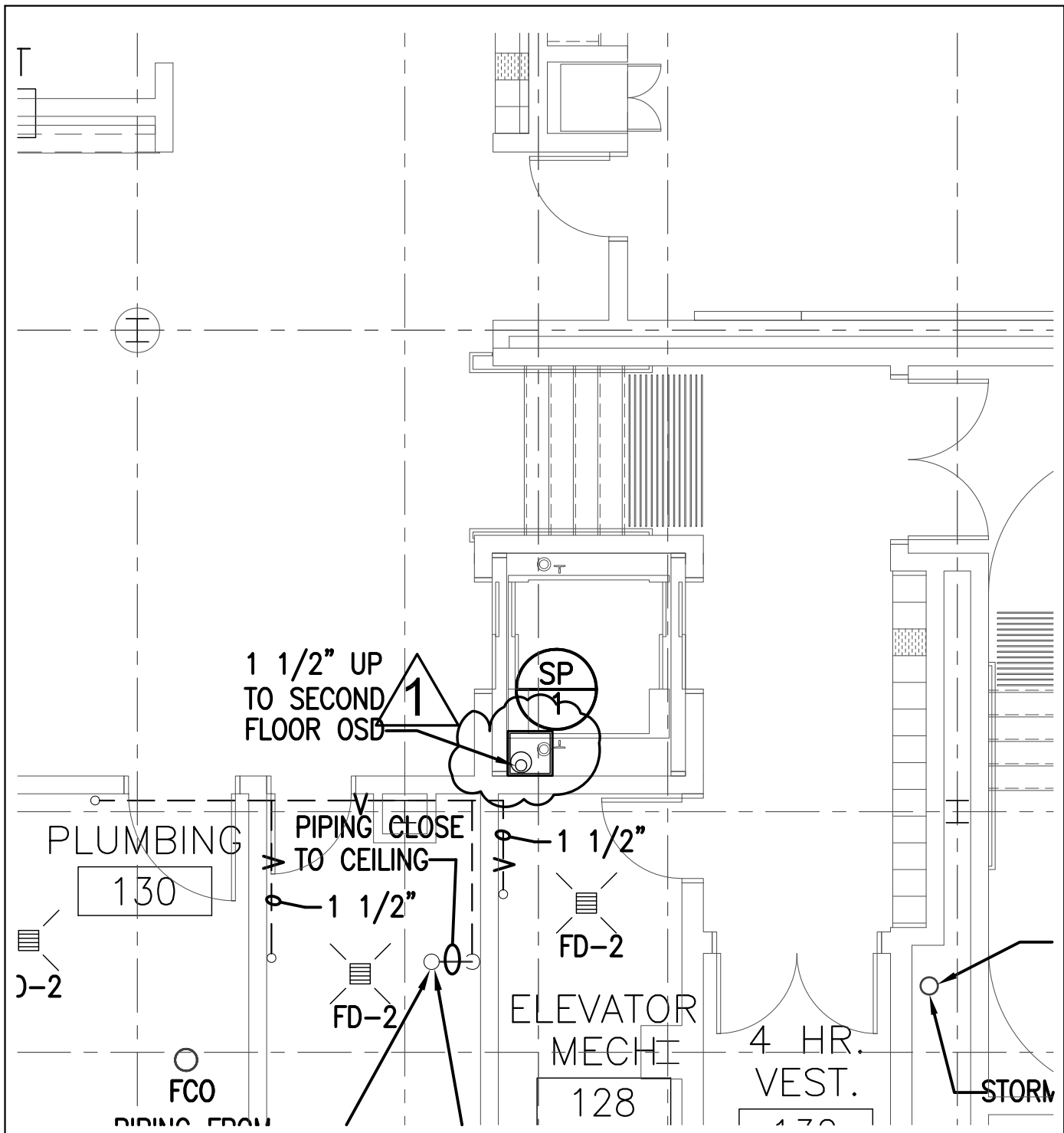
847-299-4848 (FAX: 847-299-4858)

SCALE

N.T.S.

REFERENCE DWG

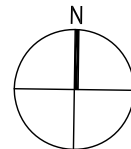
P1.0



FIRST FLOOR SANITARY AND STORM PLUMBING PLAN ANNEX

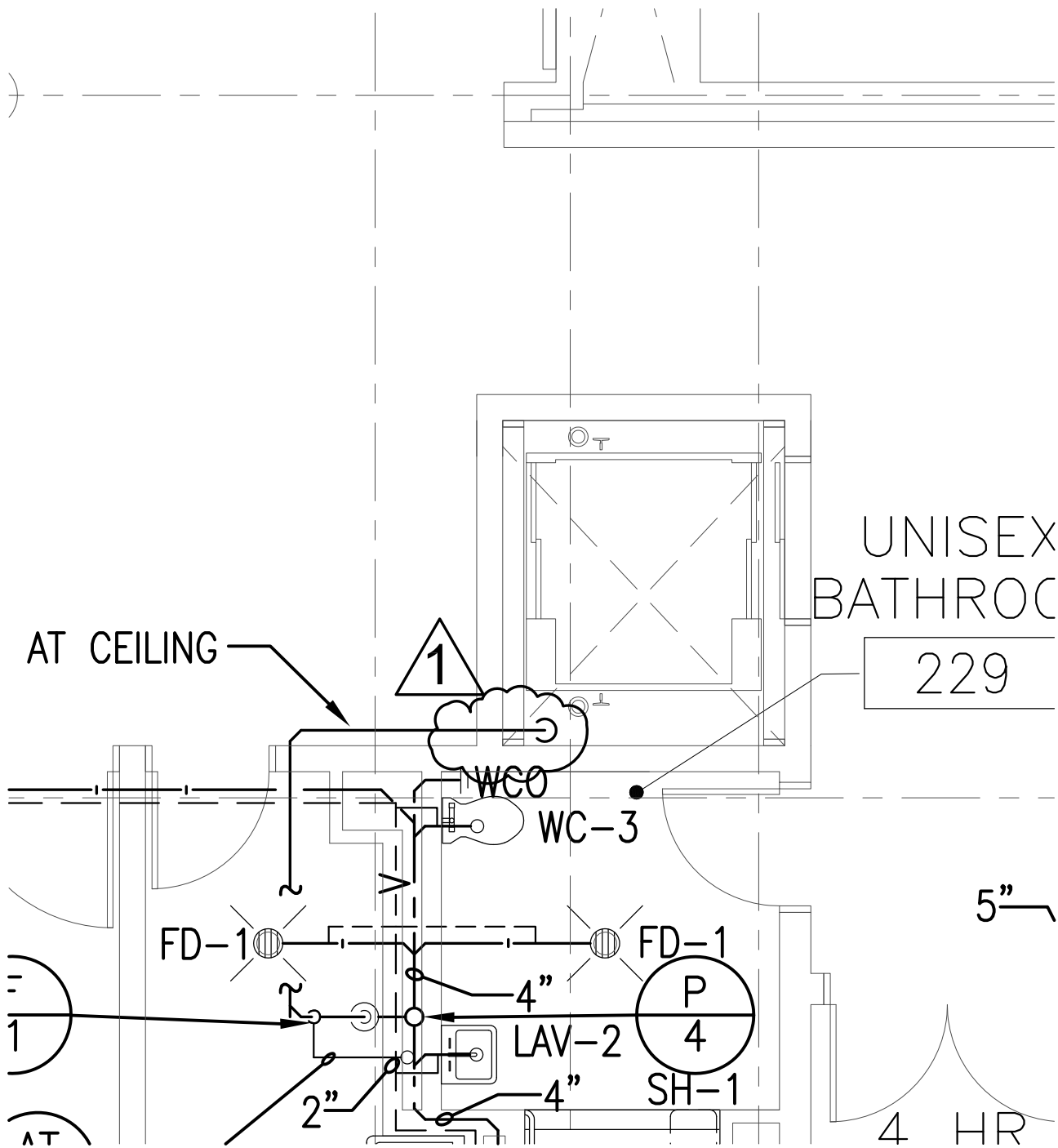
1
P1.1

SCALE: N.T.S.



ADDENDUM 2

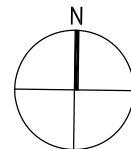
<p>WILLIAM J. ONAHAN ELEMENTARY 6634 W RAVEN ST. CHICAGO IL</p>	<p>DATE 1/13/12</p>	<p>SKETCH NUMBER PSK-2</p>
<p>DYNACEPT INC. ENGINEERS 2250 DEVON AVENUE DES PLAINES, ILLINOIS 60018 847-299-4848 (FAX: 847-299-4858)</p>	<p>SCALE N.T.S.</p>	<p>REFERENCE DWG P1.1</p>



SECOND FLOOR SANITARY AND STORM PLUMBING PLAN ANNEX

1
P1.2

SCALE: N.T.S.



ADDENDUM 2

<p>WILLIAM J. ONAHAN ELEMENTARY 6634 W RAVEN ST. CHICAGO IL</p>	<p>DATE 1/13/12</p>	<p>SKETCH NUMBER PSK-3</p>
<p>DYNACEPT INC. ENGINEERS 2250 DEVON AVENUE DES PLAINES, ILLINOIS 60018 847-299-4848 (FAX: 847-299-4858)</p>	<p>SCALE N.T.S.</p>	<p>REFERENCE DWG P1.2</p>