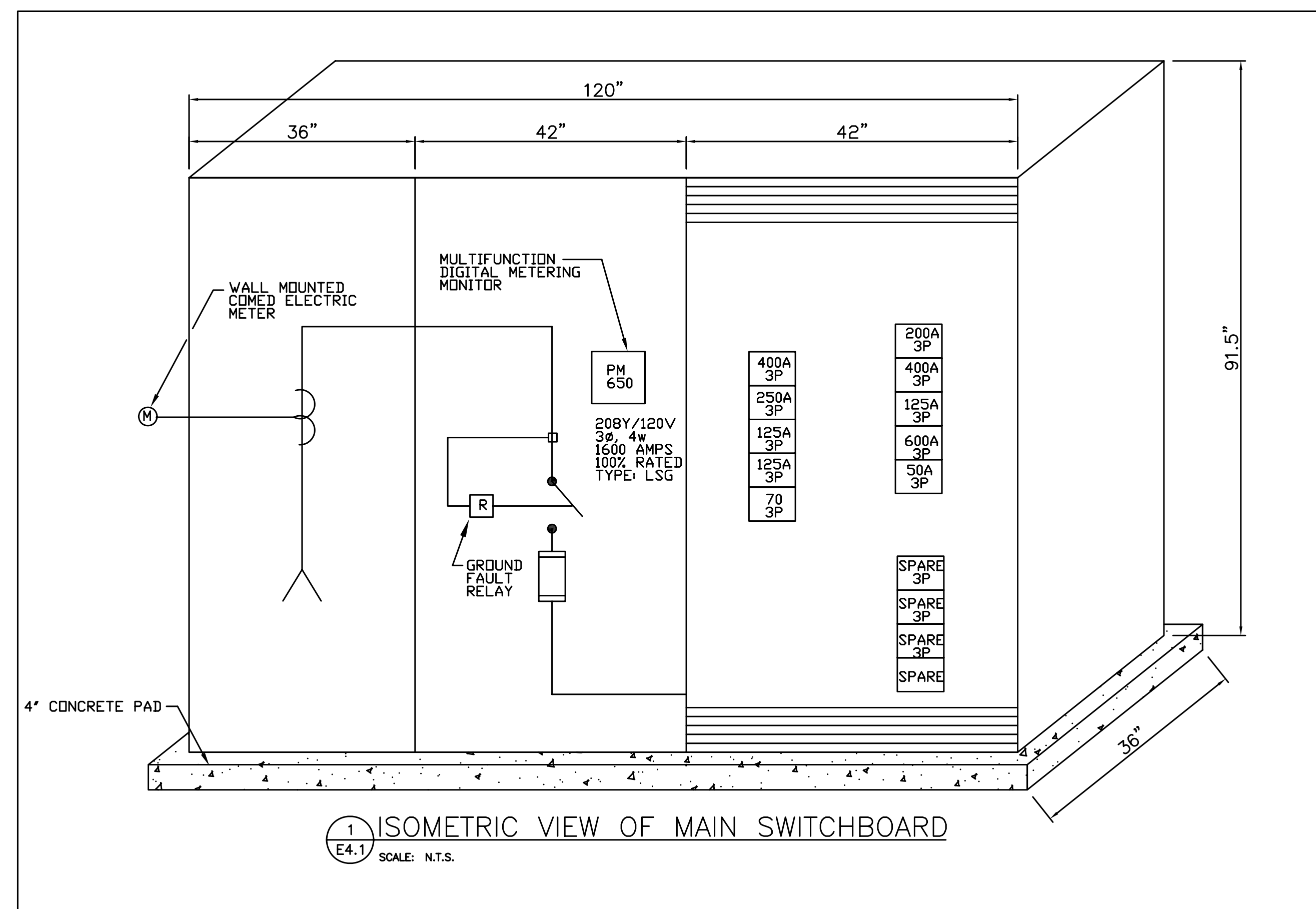
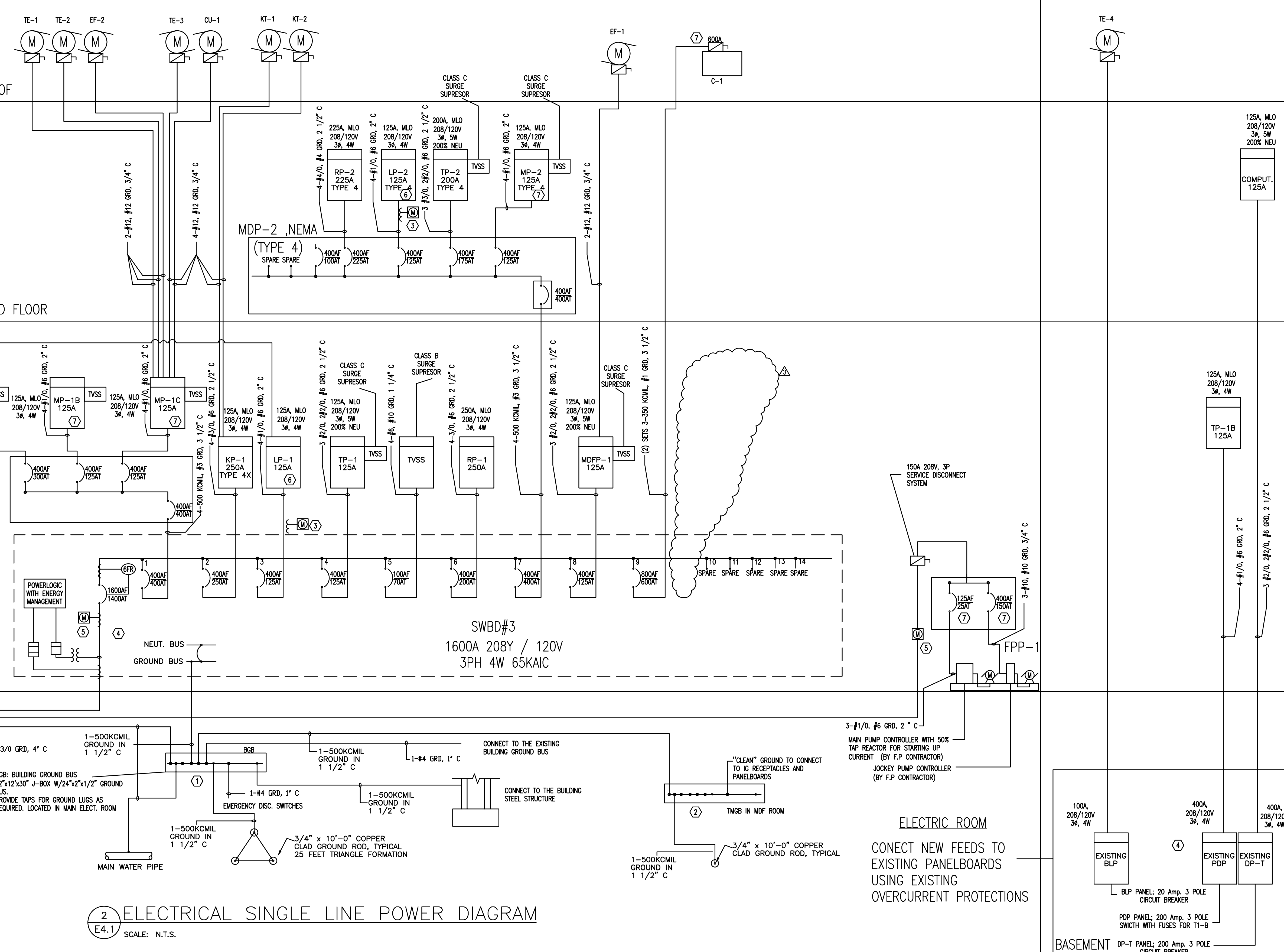


FEEDER SCHEDULE

TAG	MAXIMUM OCPD	FEEDER SIZE	TAG	MAXIMUM OCPD	FEEDER SIZE
2 WIRE + GROUND			5 WIRE, 200% NEUTRAL & GROUND		
2-12	20 A	2 #12, #12 GRD, 3/4" C	5-4	50 A	3 #4, #1/0 N, #8 GRD, 1 1/2" C
2-10	30 A	2 #10, #10 GRD, 3/4" C	5-3	60 A	3 #3, #1/0 N, #8 GRD, 1 1/2" C
2-8	50 A	2 #8, #8 GRD, 3/4" C	5-1	100 A	3 #1/0, 2#1/0 N, #6 GRD, 2" C
3 WIRE + GROUND			5 WIRE, 200% NEUTRAL, EQUIPMENT GROUND AND ISOLATED GROUND		
3-12	20 A	3 #12, #12 GRD, 3/4" C	5-3/0	150 A	3 #3/0, 2#2/0 N, #6 GRD, 2 1/2" C
3-10	30 A	3 #10, #10 GRD, 3/4" C	5-4/0	175 A	3 #4/0, 2#4/0 N, #4 GRD, 3" C
3-8	50 A	3 #8, #10 GRD, 3/4" C	5-25	200 A	3 #250 KCMIL, 2#250 KCMIL N, #4 GRD, 3" C
3-6	60 A	3 #6, #10 GRD, 1" C	5-35	250 A	3 #350 KCMIL, 2#350 KCMIL N, #4 GRD, 3 1/2" C
3-4	80 A	3 #4, #8 GRD, 1 1/4" C	5-50	300 A	3 #500 KCMIL, 2#500 KCMIL N, #3 GRD, 4" C
3-3	90 A	3 #3, #8 GRD, 1 1/4" C	25-25	400 A	(2) SETS: 3 #250 KCMIL, 2#250 KCMIL N, #2 GRD, 4" C
3-1	100 A	3 #1, #6 GRD, 1 1/2" C	25-35	500 A	(2) SETS: 3 #350 KCMIL, 2#350 KCMIL N, #1/0 GRD, 4" C
3-1/0	150 A	3 #1/0, #6 GRD, 1 1/2" C	25-50	600 A	(2) SETS: 3 #500 KCMIL, 2#500 KCMIL N, #1/0 GRD, 4" C
3-2/0	175 A	3 #2/0, #6 GRD, 2" C	35-50	800 A	(3) SETS: 3 #500 KCMIL, 2#500 KCMIL N, 2#2/0 GRD, 4" C
3-3/0	200 A	3 #3/0, #6 GRD, 2" C	45-50	1000 A	(4) SETS: 3 #500 KCMIL, 2#500 KCMIL N, #4/0 GRD, 4" C
3-4/0	225 A	3 #4/0, #4 GRD, 2" C			
3-25	250 A	3 250 KCMIL, #4 GRD, 2 1/2" C	5-4IG	50 A	3 #4, #1/0 N, 2#8 GRD, 1 1/2" C
3-35	300 A	3 350 KCMIL, #4 GRD, 3" C	5-3IG	60 A	3 #3, #1/0 N, 2#8 GRD, 1 1/2" C
3-50	400 A	3 500 KCMIL, #3 GRD, 3 1/2" C	5-1/0IG	100 A	3 #1/0, 2#1/0 N, 2#6 GRD, 2" C
23-25	500 A	(2) SETS: 3-250 KCMIL, #2 GRD, 2 1/2" C	5-2/0IG	125 A	3 #2/0, 2#2/0 N, 2#6 GRD, 2 1/2" C
23-35	600 A	(2) SETS: 3-350 KCMIL, #1 GRD, 3" C	5-3/0IG	150 A	3 #3/0, 2#2/0 N, 2#6 GRD, 2 1/2" C
23-50	800 A	(2) SETS: 3-500 KCMIL, #1/0 GRD, 3 1/2" C	5-4/0IG	175 A	3 #4/0, 2#4/0 N, 2#4 GRD, 3" C
33-50	1000 A	(3) SETS: 3-500 KCMIL, #2/0 GRD, 3 1/2" C	5-25IG	200 A	3 #250 KCMIL, 2#250 KCMIL N, 2#4 GRD, 3" C
43-35	1200 A	(4) SETS: 4-350 KCMIL, #3/0 GRD, 3" C	5-35IG	250 A	3 #350 KCMIL, 2#350 KCMIL N, 2#4 GRD, 3 1/2" C
4 WIRE + GROUND			5-50IG		
4-10	30 A	4 #10, #10 GRD, 3/4" C	25-25IG	400 A	(2) SETS: 3 #250 KCMIL, 2#250 KCMIL N, 2#2 GRD, 4" C
4-8	50 A	4 #8, #10 GRD, 1" C	25-35IG	500 A	(2) SETS: 3 #350 KCMIL, 2#350 KCMIL N, 2#1/0 GRD, 4" C
4-6	60 A	4 #6, #10 GRD, 1 1/4" C	25-50IG	600 A	(2) SETS: 3 #500 KCMIL, 2#500 KCMIL N, 2#1/0 GRD, 4" C
4-4	80 A	4 #4, #8 GRD, 1 1/4" C	35-50IG	800 A	(3) SETS: 3 #500 KCMIL, 2#500 KCMIL N, 2#2/0 GRD, 4" C
4-3	90 A	4 #3, #8 GRD, 1 1/4" C	45-50IG	1000 A	(4) SETS: 3 #500 KCMIL, 2#500 KCMIL N, 2#4/0 GRD, 4" C
4-1	100 A	4 #1, #8 GRD, 1 1/2" C			
4-1/0	150 A	4 #1/0, #6 GRD, 2" C			
4-2/0	175 A	4 #2/0, #6 GRD, 2" C			
4-3/0	200 A	4 #3/0, #6 GRD, 2 1/2" C			
4-4/0	225 A	4 #4/0, #4 GRD, 2 1/2" C			
4-25	250 A	4-250 KCMIL, #4 GRD, 3" C			
4-35	300 A	4-350 KCMIL, #4 GRD, 3 1/2" C			
4-50	400 A	4-500 KCMIL, #3 GRD, 3 1/2" C			
24-25	500 A	(2) SETS: 4-250 KCMIL, #2 GRD, 3 1/2" C			
24-35	600 A	(2) SETS: 4-350 KCMIL, #1 GRD, 3 1/2" C			
24-50	800 A	(2) SETS: 4-500 KCMIL, #1/0 GRD, 3 1/2" C			
34-50	1000 A	(3) SETS: 4-500 KCMIL, #2/0 GRD, 3 1/2" C			
44-35	1200 A	(4) SETS: 4-350 KCMIL, #3/0 GRD, 3 1/2" C			
44-45	1600 A	(4) SETS: 4-450 KCMIL, #2/0 GRD, 4" C			
4 WIRE (SERVICE)					
S1-1	100 A	4 #1, #8 GRD, 1 1/2" C			
S2-1/0	150 A	4 #1/0 #6 GRD, 2" C			
S3-4-50	1600 A	(4) SETS: 4-500 KCMIL, 4" C			



EQUIPMENT	ESTIMATED CIRCUIT LENGTH (1 WAY)	VOLTAGE DROP (%)	FEEDER SIZE
MP-1	72'	0.6	4-500 KCMIL, #3 GRD, 3 1/2" C
KP-1	47'	0.4	4-#3/0, #6 GRD, 2 1/2" C
LP-1	15'	0.1	4-#1/0, #6 GRD, 2" C
TP-1	15'	0.1	3-#2/0, 2#2/0, #6 GRD, 2 1/2" C
RP-1	15'	0.1	4-#3/0, #6 GRD, 2" C
MDP-1	18'	0.1	3-#2/0, 2#2/0, #6 GRD, 2 1/2" C
MDP-2	137'	1	4-500 KCMIL, #3 GRD, 3 1/2" C
C-1	118'	0.7	(2) SETS 3-350 KCMIL, #1 GRD, 3 1/2" C
NEW COMPUTER	72'	0.2	3 #2/0, 2#2/0, #6 GRD, 2 1/2" C
NEW TP-1B	61'	0.15	4-#1/0, #6 GRD, 2" C
MP-2	15'	0.1	4-#1/0, #6 GRD, 2" C
LP-2	15'	0.1	4-#1/0, #6 GRD, 2" C
TP-2	15'	0.1	3-#2/0, 2#2/0, #6 GRD, 2 1/2" C
RP-2	15'	0.1	4-#4/0, #4 GRD, 2 1/2" C
SERV-1 SVBD #3	165'	0.4	(4) SETS 4-500 KCMIL, #3/0 GRD, 4" C
SERV-2 FPP-1	226'	1.0	4-#1/0, #6 GRD, 2" C



- KEYED NOTES:**
- CONTINUOUS EQUIPMENT GROUNDING CONDUCTORS SHALL BE INSTALLED IN ALL CIRCUITS BOND TO ALL GROUND LUGS, BUSSES, SWITCHES, RECEPTACLES, EQUIPMENT FRAMES, ETC... PER CHICAGO BUILDING CODE/NEC. THE MAIN FACILITY GROUNDING FIELD ELECTRODE SYSTEM TO GROUND SHALL BE 5 OHMS OR LESS AND SHALL BE BURIED AT LEAST 30" BELOW GRADE. ALL RACEWAY SHALL HAVE GROUNDING BUSHING FOR GROUND CONTINUITY.
  - PROVIDE INDEPENDENT AND ISOLATED GROUND SYSTEM TO FEED MDP ROOM GROUND BUS. ISOLATED GROUND RECEPTACLES AND COMPUTER EQUIPMENT SHALL BE GROUNDING USING THIS SYSTEM.
  - PROVIDE C/T METERING OF FEEDERS FOR LIGHTING PANELS / PV PANELS FOR MEASUREMENT AND VERIFICATION.
  - BEFORE ADDING OR REMOVING ANY CONDUIT/CABLE IN THE EXISTING ELECTRICAL ROOM, A THOROUGH FIELD INSPECTION SHALL BE DONE TO AVOID POSSIBLE CLASHING MISTAKES. SCHOOL ENGINEER'S APPROVAL SHALL BE OBTAINED BEFORE WORK STARTS.
  - PROVIDE 210/120 V, 3P, 4W, 200 AMP METER SOCKET FOR COMED UTILITY METER.
  - PROVIDE TYPE SMD CIRCUIT BREAKERS FOR SWITCHING LIGHTING LOADS.
  - PROVIDE TYPE HACR CIRCUIT BREAKERS FOR HVAC AND FP PUMP EQUIPMENT.

- GENERAL NOTES:**
- ELECTRICAL SYSTEMS MAIN SERVICE EQUIPMENT SHALL BE DESIGNED WITH A 15 PERCENT SPARE AMPERAGE CAPACITY AND 30 PERCENT SPARE SPACE CAPACITY. PANELBOARDS SHALL BE DESIGNED UP TO 100 PERCENT OF CAPACITY AND BE PROVIDED WITH A MINIMUM OF 6 SPARE OVER CURRENT PROTECTION DEVICES. PROVIDE 10 SPARE SPACES IN BRANCH DISTRIBUTION PANELBOARDS AND 4-3 POLE SPACES ON THE MAIN DISTRIBUTION BOARD.
  - ELECTRICAL BRANCH CIRCUITS TO 5 HP, 3P, AND LARGER MOTOR FOR AIR HANDLING UNITS, EXHAUST FANS, PUMPS, CHILLERS, AND CONDENSING UNITS SHALL BE PROVIDED WITH PHASE LOSS PROTECTION. PHASE LOSS PROTECTION SHALL BE INTEGRATED TO STARTERS OR VARIABLE FREQUENCY DRIVES SERVING THE EQUIPMENT.
  - ELECTRICAL POWER MONITORING SHALL BE ACCOMPLISHED THROUGH THE BUILDING AUTOMATION SYSTEM.



EDISON PARK ELEMENTARY SCHOOL ANNEX  
6220 N. OLCOTT AVE  
CHICAGO, IL 60631  
CHICAGO PUBLIC SCHOOLS  
CITY OF CHICAGO, MAYOR RAHIM EMANUEL

THESE DRAWINGS HAVE BEEN PREPARED AT AND UNDER MY SUPERVISION AND TO THE BEST OF MY KNOWLEDGE AND BELIEF CONFORM AND COMPLY WITH THE REQUIREMENTS OF THE CHICAGO DEPARTMENT OF BUILDING.

ILLINOIS  
KATHLEEN O'DONNELL  
REGISTERED ARCHITECT  
001-016351  
EXPIRATION DATE: NOVEMBER 30, 2012

TRIPARTITE, INC  
Architecture Restoration Design  
4720 N. Virginia Ave.  
Chicago, Illinois 60625  
P: 773-681-0584  
www.tripartiteinc.com

MATRIX ENGINEERING CORPORATION  
33 W. JACKSON BLVD., 4TH FLOOR, CHICAGO, IL 60604  
STRUCTURAL ENGINEERING

SITE DESIGN GROUP, LTD.  
800 S. MICHIGAN AVE., SUITE 1001, CHICAGO, IL 60605  
LANDSCAPE DESIGN

TERRA ENGINEERING, LTD.  
225 W. OHIO STREET, 4TH FLOOR, CHICAGO, IL 60604  
CIVIL ENGINEERING

CALOR DESIGN GROUP, LTD.  
2017 N. WESTERN AVE., CHICAGO, IL 60647  
MECHANICAL, PLUMBING, FIRE PROTECTION

TECHKNOW ENGINEERING, LLC  
100 S. MICHIGAN AVE., SUITE 1100, CHICAGO, IL 60605  
QUALITY CONTROL, LOW VOLTAGE, SECURITY, FIRE ALARM

HJ KESSLER ASSOCIATES  
1800 LAKE SHORE DRIVE, SUITE 501, CHICAGO, IL 60613  
LEED CONSULTANT

EDGE ASSOCIATES, INC  
200 S. LAKE STREET, SUITE 303 / ADDISON, IL 60101  
FLOOD SERVICES

DOOR SECURITY SOLUTIONS  
114 KOSTER AVE., HENNEBELL, IL 60155  
HARDWARE CONSULTANT

PIN DROP ACOUSTICS  
201 W. LAKE STREET, #100, CHICAGO, IL 60606  
ACOUSTIC CONSULTANT

ISSUANCE

MARK	DESCRIPTION	DATE
1	ISSUE FOR PERMIT	12-18-12
2	ADDENDUM #3	01-23-13
3		
4		
5		
6		
7		
8		

SCALE: AS NOTED  
PLOT DATE: 1/22/2013

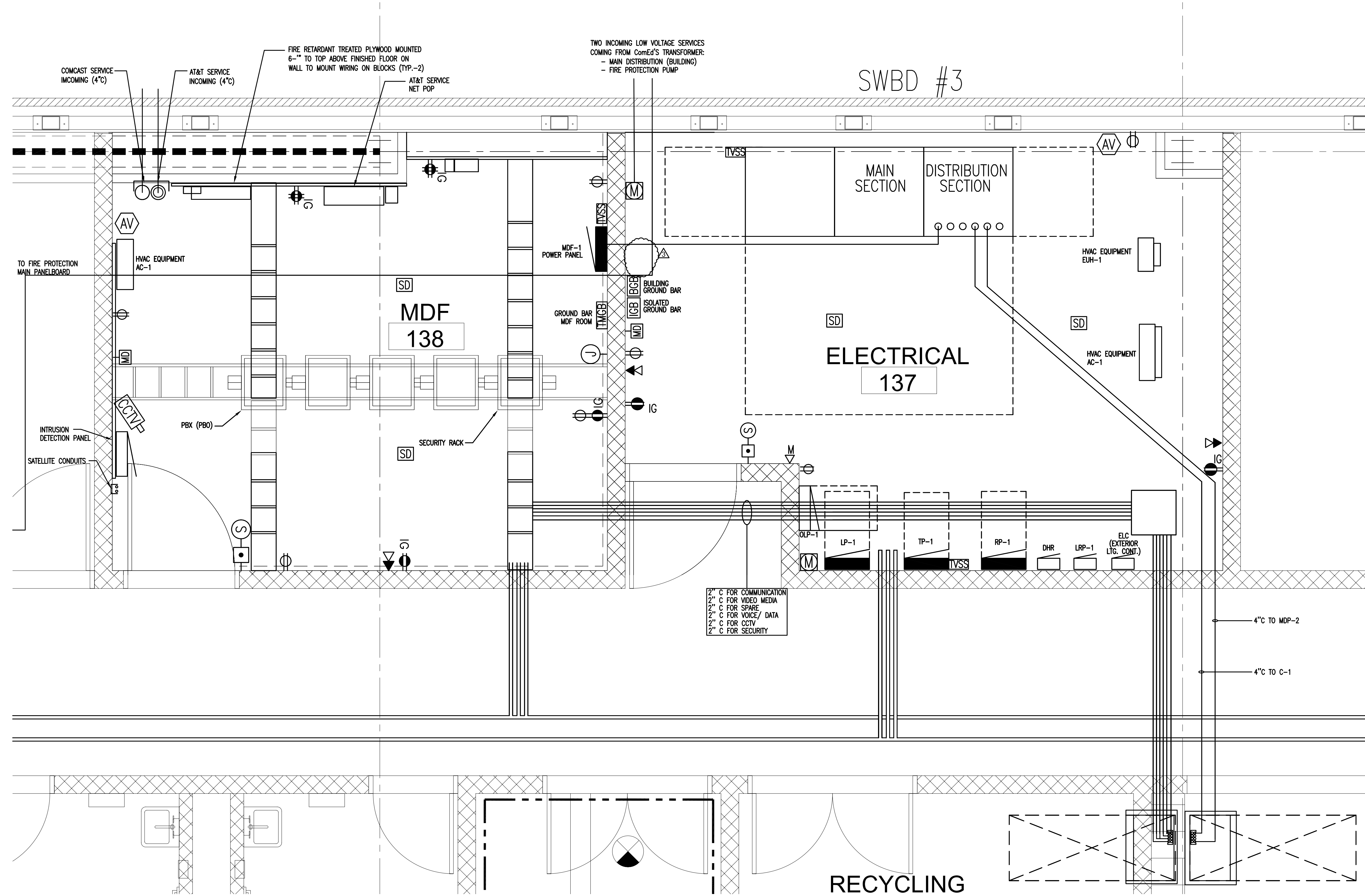
PROJECT NAME: EDISON PARK ELEMENTARY SCHOOL ANNEX  
PROJECT NO.: 05650

ASBESTOS-CONTAINING BUILDING MATERIALS ARE OR MAY BE PRESENT IN THE BUILDING. AN ASBESTOS MANAGEMENT PLAN IS AVAILABLE IN THE SCHOOL, FOR REVIEW UPON REQUEST. NO CONSTRUCTION SHALL BE PERMITTED UNLESS A LICENSED ASBESTOS WORKER OR CONSULTANT HAS BEEN NOTIFIED AND ACCORDANCE WITH SPECIFICATIONS CONTAINED IN THE PROJECT DOCUMENTS OR WITH FEDERAL, STATE AND LOCAL DEPARTMENT OF HEALTH RULES AND REGULATIONS.

ELECTRICAL SINGLE LINE POWER DIAGRAM

SHEET  
E4.1





01 ENLARGED MDF / ELECTRICAL ROOM  
SCALE: 1/16" = 1'-0"



EDISON PARK ELEMENTARY SCHOOL ANNEX  
6220 N. OLCOTT AVE  
CHICAGO, IL 60631  
CHICAGO PUBLIC SCHOOLS  
CITY OF CHICAGO, MAYOR RAHM EMANUEL

THESE DRAWINGS HAVE BEEN PREPARED AT AND / OR UNDER MY SUPERVISION AND TO THE BEST OF MY KNOWLEDGE AND BELIEF CONFORM AND COMPLY WITH THE REQUIREMENTS OF THE CHICAGO DEPARTMENT OF BUILDING.

ILLINOIS  
KATHLEEN O'DONNELL  
REGISTERED ARCHITECT  
001-016351  
EXPIRATION DATE: NOVEMBER 30, 2012

TRIPARTITE, INC  
Architecture Restoration Design  
4720 N. Virginia Ave.  
Chicago, Illinois 60625  
P: 773-581-0994  
www.tripartiteinc.com

MATRIX ENGINEERING CORPORATION  
3318 N. JACKSON BLVD. 4TH FLOOR / CHICAGO, IL 60654  
STRUCTURAL ENGINEERING

SITE DESIGN GROUP, LTD.  
608 N. MICHIGAN AVE. SUITE 1000 / CHICAGO, IL 60605  
LANDSCAPE DESIGN

TERRA ENGINEERING, LTD.  
225 W. OHIO STREET, 4TH FLOOR / CHICAGO, IL 60604  
CIVIL ENGINEERING

CALOR DESIGN GROUP, LTD.  
2017 N. WESTERN AVE. / CHICAGO, IL 60647  
MECHANICAL, PLUMBING, FIRE PROTECTION

TECHKNOW ENGINEERING, LLC  
131 E. ROBERT ST. SUITE 1100 / CHICAGO, IL 60603  
QUALITY CONTROL, LOW VOLTAGE, SECURITY, FIRE ALARM

HJ KESSLER ASSOCIATES  
1860 N. LAKE SHORE DRIVE, SUITE 501 / CHICAGO, IL 60613  
LEED CONSULTING

EDGE ASSOCIATES, INC  
220 S. LAKE STREET, SUITE 303 / AUBURN, IL 60101  
FOOD SERVICES

DOOR SECURITY SOLUTIONS  
119 KOSTER AVE. BENSenville, IL 60108  
HARDWARE CONSULTANT

PIN DROP ACOUSTICS  
201 W. LAKE STREET, #100 / CHICAGO, IL 60606  
ACOUSTIC CONSULTANT

ISSUANCE

MARK	DESCRIPTION	DATE
1	ISSUE FOR PERMIT	12-18-12
2	ADDENDUM #3	01-23-13
3		
4		
5		
6		
7		
8		

SCALE: AS NOTED  
PLOT DATE: 1/22/2013  
PROJECT NAME: EDISON PARK ELEMENTARY SCHOOL ANNEX  
PROJECT NO.: 05650

WARNING:  
ASBESTOS-CONTAINING BUILDING MATERIALS ARE OR MAY BE PRESENT IN THIS BUILDING. AN ASBESTOS MANAGEMENT PLAN IS AVAILABLE IN THE SCHOOL. FOR REVIEW UPON REQUEST. NO PERSON MAY REMOVE ASBESTOS-CONTAINING MATERIALS UNLESS THAT PERSON IS A LICENSED ASBESTOS WORKER OR CONDUCTS SUCH WORK IN ACCORDANCE WITH SPECIFICATIONS CONTAINED IN THE PROJECT DOCUMENTS AND IN COMPLIANCE WITH ILLINOIS DEPARTMENT OF HEALTH RULES AND REGULATIONS.

TITLE:  
ENLARGED MDF & ELECTRICAL ROOM PLAN

SHEET  
E7.1



**KEYED NOTES:**

- 1 ComEd TO INSTALL 2-6" BETWEEN SWITCHGEAR AND TRANSFORMER. SEE DETAIL 2 ON SHEET ES2.1 FOR DUCT DETAIL.
- 2 ComEd TO INSTALL NEW TRANSFORMER FOR ANNEX.
- 3 ELECTRICAL CONTRACTOR TO INSTALL TRANSFORMER PAD ACCORDING TO ComEd REQUIREMENTS.
- 4 ELECTRICAL CONTRACTOR TO INSTALL MAIN FEEDER (CONDUIT AND WIRES) AND TERMINATE AT NEW SWBD-3. REFER TO SINGLE LINE DIAGRAM.
- 5 ELECTRICAL CONTRACTOR TO INSTALL NEW EMERGENCY LIGHTING FEEDER AND TERMINATE AT SERVICE DISCONNECT SWITCH. REFER TO SINGLE LINE DIAGRAM.
- 6 ELECTRICAL CONTRACTOR TO INSTALL NEW EMERGENCY FIRE PROTECTION PUMP AND TERMINATE AT SERVICE DISCONNECT SWITCH. REFER TO SINGLE LINE DIAGRAM.
- 7 CONDUIT AND CABLES INSIDE THE PROPERTY BY CONTRACTOR.
- 8 ELECTRICAL CONTRACTOR TO INSTALL TWO-COMPARTMENT HANDHOLE FOR NEW AT&T AND COMCAST SERVICE. SEE DETAIL 7 ON SHEET ES2.1.
- 9 ELECTRICAL CONTRACTOR TO INSTALL TELEPHONE AND TV DUCT BANK, AS SHOWN IN DETAIL 3 ON SHEET ES2.1. AT&T AND COMCAST TO PULL CABLE UP TO THE MDF ROOM IN 4" AT&T AND 4" COMCAST.
- 10 CONTRACTOR TO INSTALL TRANSFORMER GROUNDING, ALL GROUNDING MATERIALS SUPPLIED BY COMED. CONTRACTOR SHALL FOLLOW COMED STANDARDS.

**GENERAL NOTES**

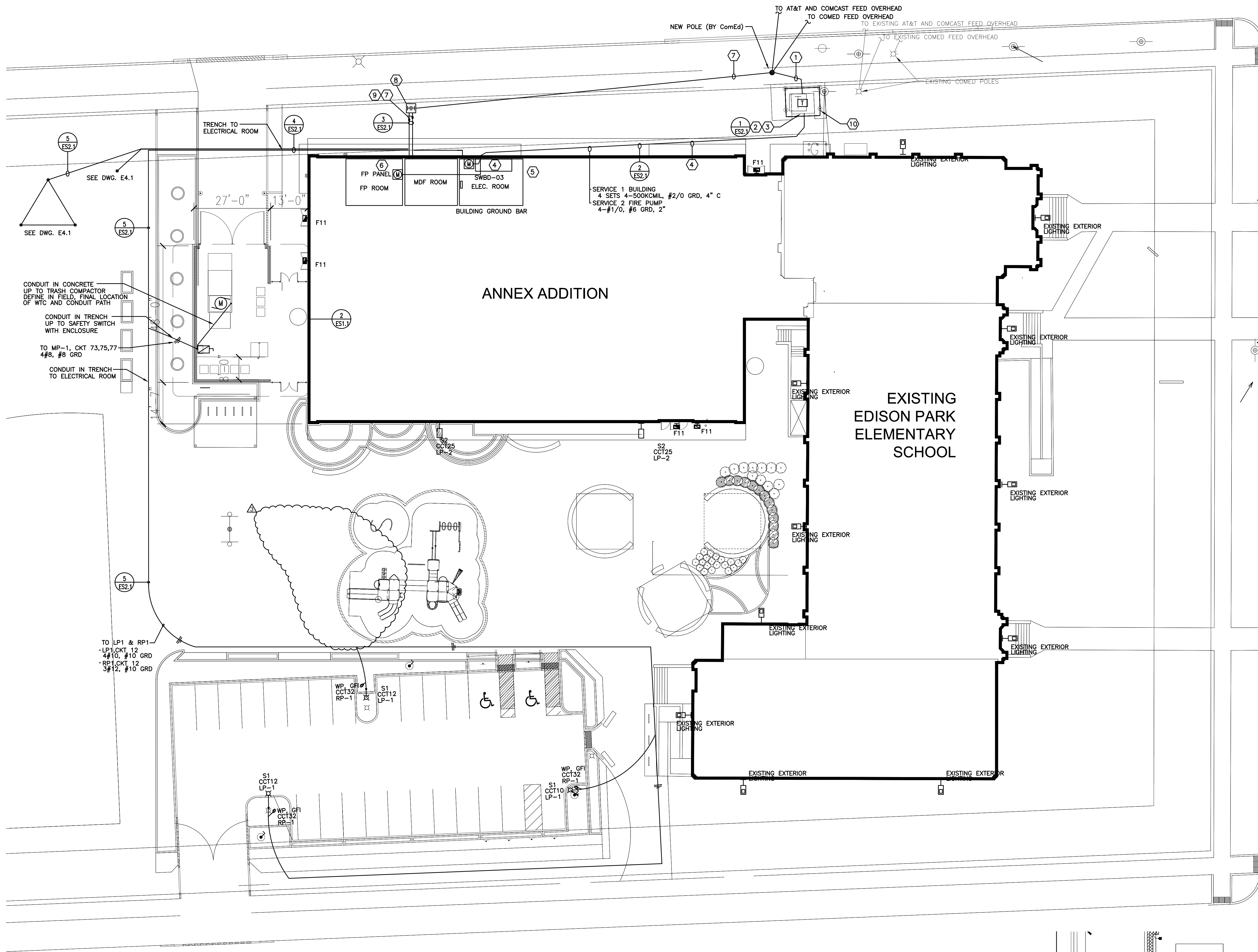
1. CONTRACTOR SHALL PROVIDE EXCAVATION, CONDUIT AND CONCRETE ENCASEMENT FOR TELEPHONE, CABLE TV, AND POWER UTILITY SERVICE DUCTS.
2. COORDINATE LIGHT FIXTURE STANDARDS WITH LANDSCAPE PLANS, CIVIL PLANS AND PAVING.
3. ROUTE SERVICE CONDUITS 10' FT. UP UTILITY POLE.
4. PROVIDE CECO. PRIMARY SERVICE CONDUITS AS SHOWN ON PLAN.
5. COORDINATE ALL EXISTING LIGHTING AND LOCATIONS WITH ARCHITECTURAL (ELEVATIONS) LANDSCAPING AND CIVIL DRAWINGS.
6. PROVIDE WATERTIGHT SEALS AROUND ALL CONDUIT PENETRATIONS THROUGH EXTERIOR WALLS.
7. ALL EMPTY CONDUIT PROVIDED FOR FUTURE USE SHALL BE PROVIDED WITH PULL ROPE LINES AND WATERTIGHT CAPS. MARK LOCATION OF CAPS.
8. DETAIL 4/ES1.1 SHALL TYPICALLY APPLY TO ALL UNDERGROUND CONDUIT RUNS UNLESS OTHERWISE INDICATED.
9. EXTERIOR LIGHTING WILL BE CONTROLLED WITH LOW VOLTAGE CONTROL RELAY SYSTEM. PHOTOCELL ON/TIME CLOCK OFF CONTROLS.
10. CONTRACTOR SHALL COORDINATE THE ELECTRICAL SERVICE INSTALLATION WITH COMED, VOICE/DATA SERVICE INSTALLATION WITH AT&T AND CATV SERVICE INSTALLATION WITH COMCAST.

**GENERAL NOTES**

1. CONTRACTOR SHALL PROVIDE EXCAVATION, CONDUIT AND CONCRETE ENCASEMENT FOR TELEPHONE, CABLE TV, AND POWER UTILITY SERVICE DUCTS.
2. COORDINATE LIGHT FIXTURE STANDARDS WITH LANDSCAPE PLANS, CIVIL PLANS AND PAVING.
3. CALL "DIGGER" PRIOR TO EXCAVATION.
4. ALL STUB-UPS SHALL BE RGS-HEAVY WALL. PROVIDE PVC/RSC ADAPTORS AND REDUCERS.
5. ALLOW ONE EVENING TO AIM FIXTURES AT NIGHT TO THE ARCHITECT'S SATISFACTION.

**SYMBOLS**

•	PROPOSED POLE
⊠	PROPOSED CECO PAD MTD TRANSFORMER
—	UTILITY DUCT
⊙ S1	POLE AND MOUNTED FIXTURE
⊙ S2	EXTERIOR LIGHT
⊙ F11	ENTRANCE FACADE LIGHT
WP, GF1	RECEPTACLE



W. MYRTLE AVENUE (TWO-WAY) ↕

N. OLCOTT AVENUE (TWO-WAY) ↕

01 ELECTRICAL SITE PLAN

SCALE: 1/16" = 1'-0"

CONDUIT IN CONCRETE UP TO TRASH COMPACTOR DEFINE IN FIELD. FINAL LOCATION OF WTC AND CONDUIT PATH

CONDUIT IN TRENCH UP TO SAFETY SWITCH WITH ENCLOSURE

TO WP-1, CKT 73,75,77 4#8, #8 GRD

CONDUIT IN TRENCH TO ELECTRICAL ROOM

02 ENLARGED TRASH COMPACTOR PLAN

SCALE: 1/8" = 1'-0"



EDISON PARK ELEMENTARY SCHOOL ANNEX

6220 N. OLCOTT AVE  
CHICAGO, IL 60631

CHICAGO PUBLIC SCHOOLS  
CITY OF CHICAGO, MAYOR RAHM EMANUEL

THESE DRAWINGS HAVE BEEN PREPARED AT AND FOR THE BEST OF MY SUPERVISION AND TO THE BEST OF MY KNOWLEDGE AND BELIEF CONFORM AND COMPLY WITH THE REQUIREMENTS OF THE CHICAGO DEPARTMENT OF BUILDING.

ILLINOIS  
KATHLEEN O'DONNELL  
REGISTERED ARCHITECT  
001-016351  
EXPIRATION DATE: NOVEMBER 30, 2012

TRIPARTITE, INC  
Architecture Restoration Design  
4720 N. Virginia Ave.  
Chicago, Illinois 60625  
P: 773-581-0894  
www.tripartiteinc.com

MATRIX ENGINEERING CORPORATION  
3318 N. JACKSON BLVD., 4TH FLOOR, CHICAGO, IL 60654  
STRUCTURAL ENGINEERING

SITE DESIGN GROUP, LTD.  
808 S. MICHIGAN AVE., SUITE 1001 CHICAGO, IL 60605  
LANDSCAPE DESIGN

TERRA ENGINEERING, LTD.  
225 W. OHIO STREET, 4TH FLOOR / CHICAGO, IL 60604  
CIVIL ENGINEERING

CALOR DESIGN GROUP, LTD.  
2017 N. WESTERN AVE. / CHICAGO, IL 60647  
MECHANICAL, PLUMBING, FIRE PROTECTION

TECHKNOW ENGINEERING, LLC  
1316 S. MICHIGAN ST., SUITE 1101 CHICAGO, IL 60605  
QUALITY CONTROL, LOW VOLTAGE, SECURITY, FIRE ALARM

HJ KESSLER ASSOCIATES  
1860 N. LAKE SHORE DRIVE, SUITE 501 / CHICAGO, IL 60613  
LEED CONSULTING

EDGE ASSOCIATES, INC  
205 S. LAKE STREET, SUITE 303 / AUBURN, IL 60011  
FOOD SERVICES

DOOR SECURITY SOLUTIONS  
119 KOSTER AVE., BENSenville, IL 60009  
HARDWARE CONSULTANT

PIN DROP ACOUSTICS  
2017 N. WESTERN AVE. #100 / CHICAGO, IL 60647  
ACOUSTIC CONSULTANT

**ISSUANCE**

MARK	DESCRIPTION	DATE
1	ISSUE FOR PERMIT	12-18-12
2	ADDENDUM #3	01-23-13
3		
4		
5		
6		
7		
8		

SCALE: AS NOTED

PLOT DATE: 1/22/2013

PROJECT NAME: EDISON PARK ELEMENTARY SCHOOL ANNEX

PBC CONTRACT NO.:

PROJECT NO.: 05650

WARNING: ASBESTOS-CONTAINING BUILDING MATERIALS ARE OR MAY BE PRESENT IN THIS BUILDING. AN ASBESTOS MANAGEMENT PLAN IS AVAILABLE IN THE SCHOOL. FOR REVIEW UPON REQUEST. NO PERSON MAY DISTURB ASBESTOS-CONTAINING MATERIALS UNLESS THAT PERSON IS A LICENSED ASBESTOS WORKER OR CONDUCTS SUCH WORK IN ACCORDANCE WITH SPECIFICATIONS CONTAINED IN THE PROJECT DOCUMENTS AND IN COMPLIANCE WITH ILLINOIS DEPARTMENT OF HEALTH RULES AND REGULATIONS.

TITLE:

ELECTRICAL  
SITE PLAN

SHEET  
ES1.1