



**ALBANY PARK
BRANCH LIBRARY**
3401 WEST FOSTER
CHICAGO, IL

CHICAGO PUBLIC LIBRARIES
CAPITAL PROGRAM - NEW CONSTRUCTION
CITY OF CHICAGO, MAYOR RAHM EMMANUEL

JACKSON HARLAN
ARCHITECTURE INTERIORS LEED

651 W. Washington Blvd. Ste. 206
Chicago, IL 60661
TEL. 312.627-1015
FAX. 312.627-1060
WWW.JACKSONHARLAN.COM

TGRWA, LLC
CHICAGO, IL
STRUCTURAL ENGINEER

dbHMS
CHICAGO, IL
MEP/PFP/GE/CHX ENGINEER

DAVID MASON & ASSOCIATES
CHICAGO, IL
CIVIL ENGINEER

TERRY GUEN DESIGN ASSOCIATES
CHICAGO, IL
LANDSCAPE, CIVIL ENGINEER

Mark	Description	Date
△	ADDENDUM 2	04-29-13
△	ADDENDUM 1	04-22-13
6	ISSUE FOR BID & PERMIT	03-21-13
5	100% PRE-BID REVIEW	03-13-13
4	90% CONST. DOCUMENTS	02-14-13
3	60% CONST. DOCUMENTS	11-30-12
2	DESIGN DEVELOPMENT	09-28-12
1	SCHEMATIC DESIGN	07-13-12

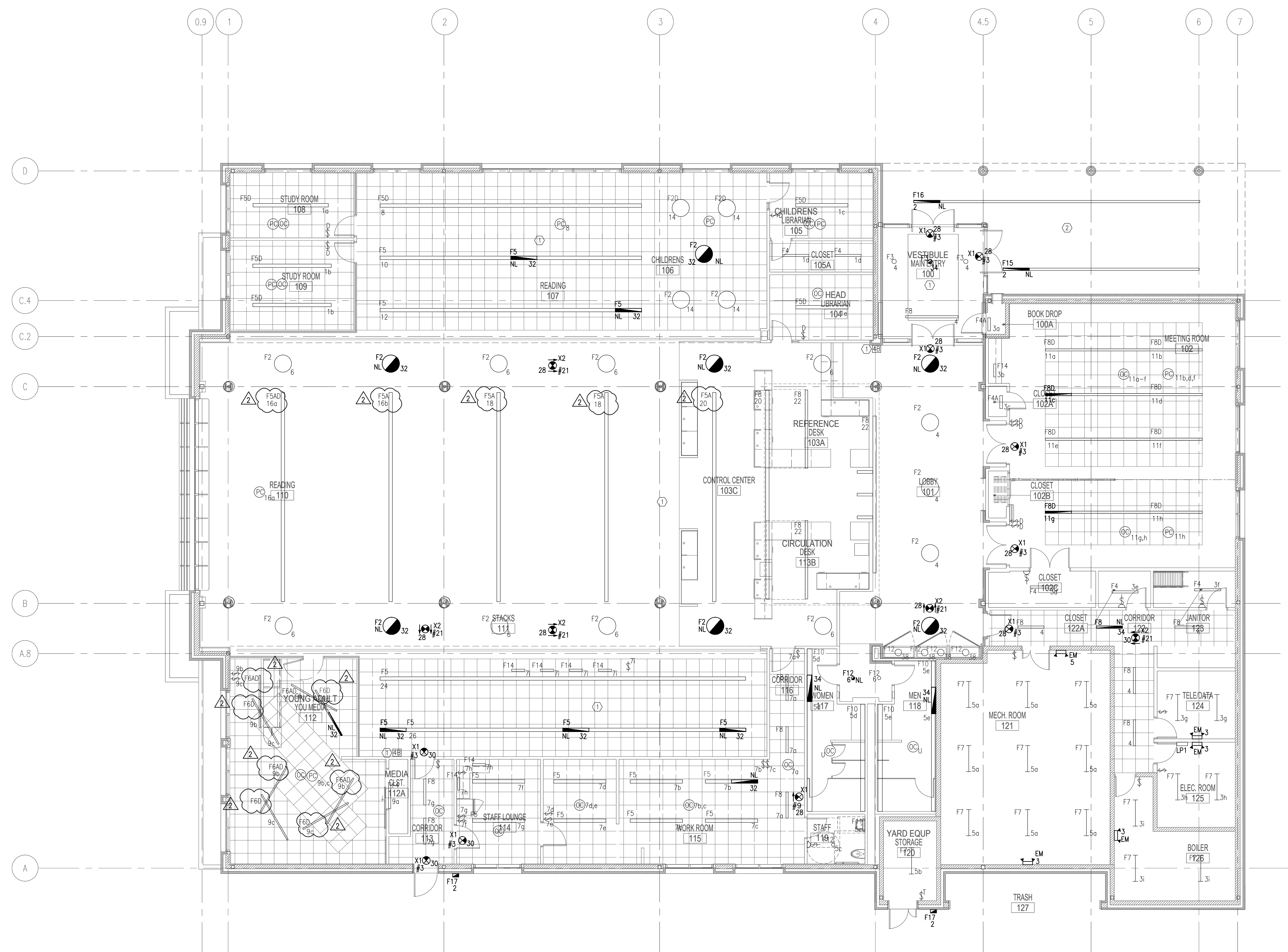
PBC Project Name: Albany Park Branch Library
PBC Project No.: 08130
ACR Project No.: 1203

Title
ELECTRICAL LIGHTING FLOOR PLAN

Sheet
E2.02

- GENERAL NOTES:
- REFER TO SHEET E2.01 FOR ELECTRICAL PANELBOARD LOCATIONS. ALL SHOWN CIRCUITS SHALL BE FED FROM PANEL LP1 UNLESS NOTED OTHERWISE.
 - EMERGENCY BATTERY WALL MOUNT PACK SHALL BE CONNECTED TO REGULAR LIGHT CIRCUIT IN THE AREA AHEAD OF SWITCH.
 - HALF HATCHED FIXTURES DESIGNATED FOR EMERGENCY LIGHTING SHALL BE EQUIPPED WITH CHICAGO APPROVED BATTERY BALLAST.
 - MANUAL OVERRIDE SWITCH (MASTER CONTROL) FOR READING AND STACK AREA SHALL BE LOCATED IN WORK/STAFF AREA.
 - LIGHT FIXTURES TAGGED WITH "NL" SHALL BE WIRED AHEAD OF LOCAL SWITCHING FOR NIGHT LIGHT APPLICATION.
 - LIGHTING CONTROL OF LIBRARY WILL CONSIST OF DAYLIGHT SENSORS, OCCUPANCY SENSORS, AND WALL MOUNTED SENSORS/SWITCHES.
 - PERIMETER OF BUILDING AND MAIN READING AREA WILL BE CONTROLLED BY DAYLIGHT SENSORS WITH DIMMABLE BALLASTS WHICH WILL ALLOW TO REDUCE LIGHTING INTENSITY DOWN TO 10% OF ITS FULL CAPACITY BASED ON AMBIENT LIGHT CONDITION OF THE SPACE. CONTRACTOR SHALL TEST AND CALIBRATE PHOTOCELLS TO MAINTAIN FOOT CANDLE THRESHOLD TO MEET IESNA RECOMMENDATIONS.
 - UNLESS NOTED OTHERWISE, ENCLOSED AREA WILL BE CONTROLLED WITH OCCUPANCY SENSOR TO MEET ENERGY CODE REQUIREMENT. DEFAULT TIME DELAY SHALL BE SET AT 15 MINUTES.
 - RESTROOMS WILL BE EQUIPPED WITH ULTRASONIC OCCUPANCY SENSORS. OTHERWISE, ALL OTHER OCCUPANCY SENSOR SHALL BE DUAL TECHNOLOGY.

- KEY NOTES:
- UNLESS NOTED OTHERWISE, ALL OPEN COMMON AREA LIGHTING SHALL BE CONTROLLED BY PHOTOCELL DAYLIGHT HARVESTING SENSORS. NETWORK OVERRIDE SWITCHES SHALL OVERRIDE DAYLIGHT HARVESTING SYSTEM FOR 2 HOUR MAXIMUM. CONTRACTOR SHALL COORDINATE WITH ARCHITECT/OWNER FOR EXACT LOCATION OF OVERRIDE SWITCHES.
 - UNLESS NOTED OTHERWISE, EXTERIOR FIXTURES SHALL BE CONTROLLED BY PHOTOCELL ON (LOCATED ON ROOF) AND TIME CLOCK OFF VIA TIME CLOCK.



1 ELECTRICAL LIGHTING FLOOR PLAN
SCALE: 1/8" = 1'

0 2' 4' 8'
SCALE: 1/8" = 1'