

## SECTION 129113

### CARTS

#### **PART 1 - GENERAL**

##### 1.1 SUMMARY

- A. Section Includes:
  - 1. Paper drying racks.
  - 2. Art storage carts.

##### 1.2 ACTION SUBMITTALS

- A. Product Data: For each type of product indicated.
- B. Samples for Verification: 12 inches square for cart panel finishes and 12 inches long for framing finishes.

#### **PART 2 - PRODUCTS**

##### 2.1 MATERIALS

- A. Steel: Finished with manufacturer's standard baked-enamel finish. Comply with the following:
  - 1. Steel Plates, Shapes, and Bars: ASTM A 36/A 36M.
  - 2. Cold-Finished Carbon-Steel Bars: ASTM A 108.
  - 3. Cold-Formed Steel Tubing: ASTM A 500, Grade A unless another grade is required by structural loads.
- B. Hardwood Plywood: HPVA HP-1, particleboard core except where veneer core is indicated.
- C. Steel Hardware: Manufacturer's standard thicknesses, galvanized after fabrication according to ASTM A 153/A 153M.
- D. Fasteners: Manufacturer's standard noncorroding type.

##### 2.2 PAPER DRYING RACKS

- A. **Manufacturer: Subject to compliance with requirements, provide products by one of the following:**
  - 1. **AWT.**
  - 2. **Saturn Rack Company.**
  - 3. **Virco.**
- B. Frames: Provide manufacturer's standard steel frames designed to accommodate 30" x 46" drying shelves.
- C. Shelves: Provide approximately 40 drying shelves with approximate opening mesh size 7-1/2" x 9-3/4".
- D. Frames: Fabricate platform frame, legs, and braces from cold-formed steel tubing.

- E. Casters: Provide manufacturer's standard heavy-duty casters designed to support cart loads, including not less than two swivel casters. Fabricate wheels from materials that will not damage or mark floors.

### 2.3 ART STORAGE CARTS

- A. **Manufacturer: Subject to compliance with requirements, provide products by one of the following:**

- 1. **Brodart.**
- 2. **KI.**
- 3. **Worden.**

- B. Panels: Provide manufacturer's standard panel construction with one of the following finishes and substrates, as indicated on Product Information Sheets:

- 1. Finish and Substrate: Maple plywood, or other species as approved by Architect.

- C. Hardware: Adjustable stainless steel shelf supports.

### 2.4 METAL FINISHES

- A. Comply with NAAMM's "Metal Finishes Manual for Architectural and Metal Products" for recommendations for applying and designating finishes.

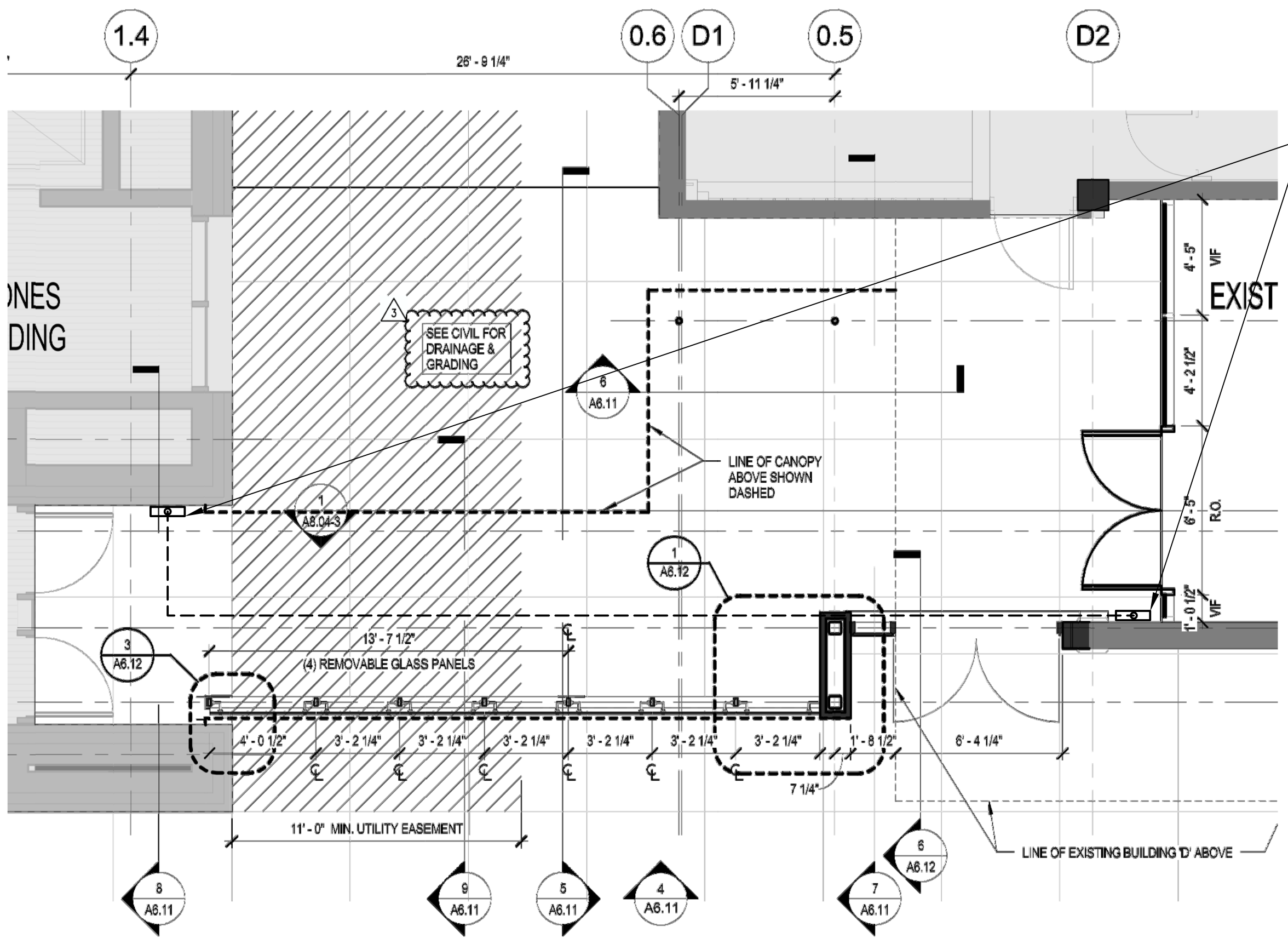
## **PART 3 - EXECUTION**

### 3.1 INSTALLATION

- A. Install carts in locations indicated according to manufacturer's written installation instructions.

END OF SECTION

2"  
1"  
0 1/2"



NEW WALL MOUNTED AI PHONE WITH ADA PUSH PLATE DOOR ACCESS CONTROLLER WITH CONDUIT CONNECTION FROM ABOVE ROUTED THRU CANOPY & CONNECTED BACK INTO NEW BUILDING

REFER TO ELECTRICAL DWGS FOR ADDITIONAL INFO & CONTINUATION

**PERKINS + WILL**

330 N. Wabash Ave.  
Suite 3600  
Chicago, IL 60611  
t 312.705.0770  
f 312.705.0775  
www.perkinswill.com



230 W. Monroe St.  
Suite 2205  
Chicago, IL 60606  
t 312.424.0390  
f 312.424.0181  
www.cps.edu



PBC Project #05267

**William Jones College  
Preparatory High School Renovation**

**Chicago Public Schools**

606 South State Street  
Chicago, Illinois

Copyright © 2013 Perkins+Will

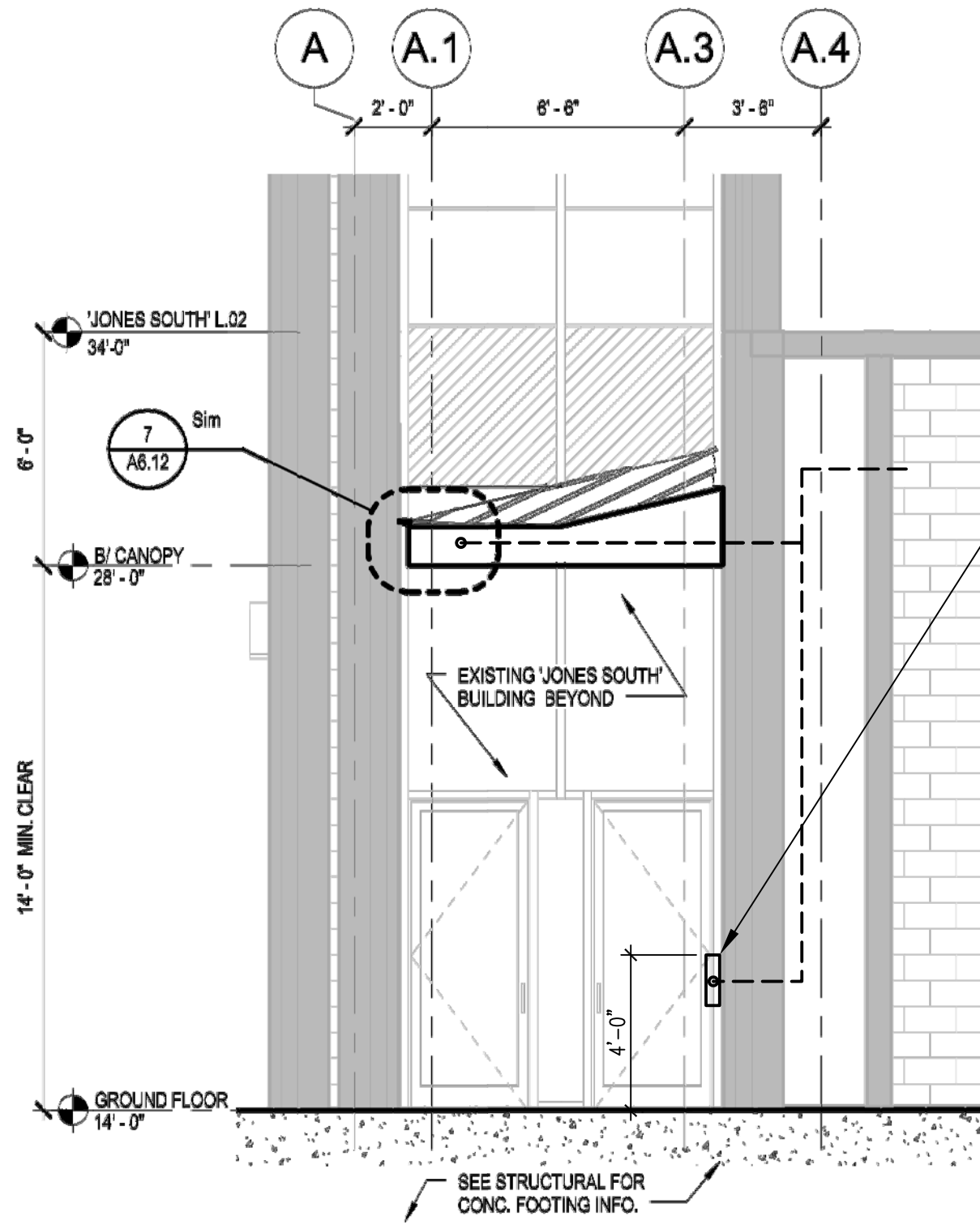
**Sheet Information**

Date	03 MAY, 2013
Job Number	022099.000
Scale	1/8"=1'0"
Drawn	JAG
Checked	JAG
Approved	JAG

**Building 'D' Level 01  
Exterior Canopy Link  
AI Phone Locations**

Sheet

ADDENDUM NO. 2 SKA611A-20130503



NEW WALL MOUNTED  
AI PHONE WITH ADA  
PUSH PLATE DOOR ACCESS  
CONTROLLER WITH CONDUIT  
CONNECTION FROM ABOVE  
ROUTED THRU CANOPY &  
CONNECTED BACK INTO  
NEW BUILDING

REFER TO ELECTRICAL DWGS  
FOR ADDITIONAL INFO &  
CONTINUATION

**8 SECTION**  
1/4" = 1'-0"

**PERKINS  
+ WILL**  
330 N. Wabash Ave.  
Suite 3600  
Chicago, IL 60611  
t 312.765.0770  
f 312.765.0775  
www.perkinswill.com



230 W. Monroe St.  
Suite 2205  
Chicago, IL 60606  
t 312.424.0390  
f 312.424.0111  
www.pbc.com



PBC Project #05267

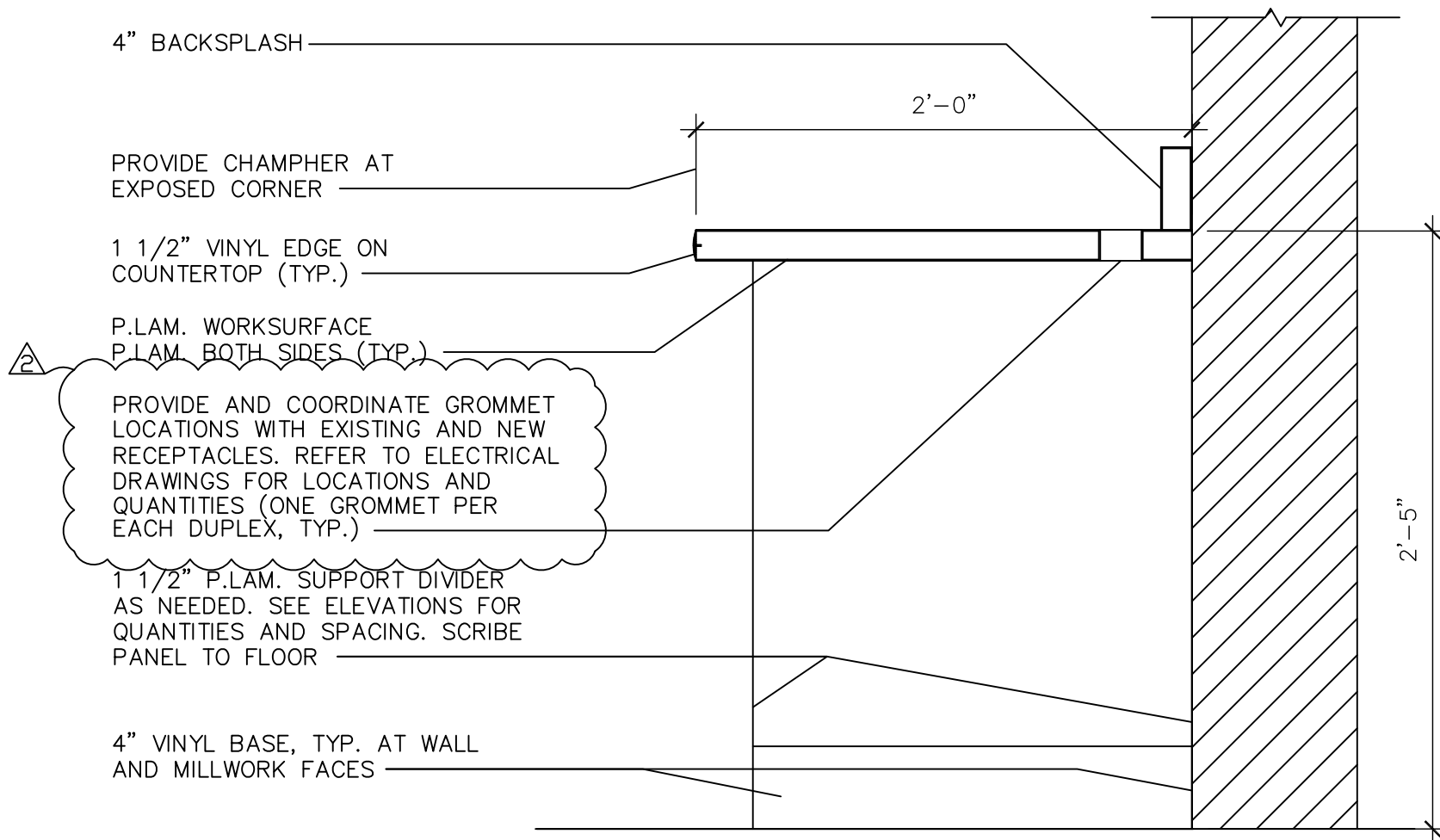
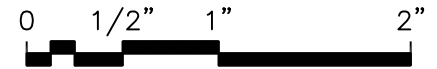
**William Jones College  
Preparatory High School Renovation**  
**Chicago Public Schools**  
606 South State Street  
Chicago, Illinois

Sheet Information	
Date	03 MAY, 2013
Job Number	022099.000
Scale	1/8"=1'-0"
Drawn	JAG
Checked	JAG
Approved	JAG

Title	
Building 'D' Level 01 Exterior Canopy Link AI Phone Locations	Sheet

Copyright © 2013 Perkins+Will

ADDENDUM NO. 2 SKA611B-20130503



9 SECTION — COUNTER  
SCALE: 1 1/2" = 1'-0"

**PERKINS  
+ WILL**

330 N. Wabash Ave.  
Suite 3600  
Chicago, IL 60611  
t: 312.755.0770  
f: 312.755.0775  
www.perkinswill.com



230 W. Monroe St.  
Suite 2205  
Chicago, IL 60606  
t: 312.424.0330  
f: 312.424.0111  
www.toeltd.com



PBC Project #05267

**William Jones College  
Preparatory High School Renovation**

**Chicago Public Schools**

606 South State Street  
Chicago, Illinois

Copyright © 2013 Perkins+Will

Sheet Information

Date	03 May, 2013
Job Number	022099.00
Scale	1 1/2" = 1'-0"
Drawn	ZZ
Checked	YJ
Approved	YJ

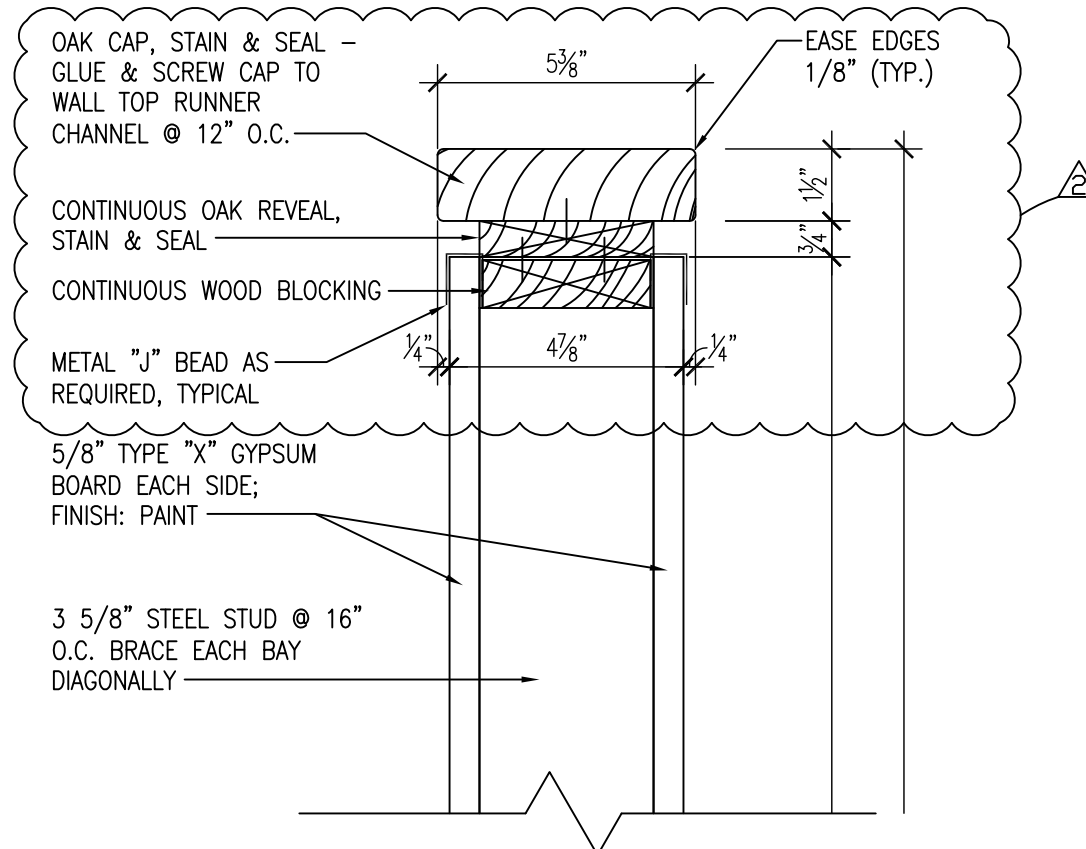
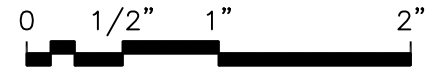
Addendum No. 2

Title

Building A 2nd Floor:  
Art Room 200-201  
Section - Counter

Sheet

SK\_TAEL\_ZZ\_A8.01-1  
DWG9\_20130503



2 DETAIL OF KNEE WALL  
SCALE: 3" = 1'-0"

**PERKINS  
+ WILL**

330 N. Wabash Ave.  
Suite 3600  
Chicago, IL 60611  
t: 312.755.0770  
f: 312.755.0775  
www.perkinswill.com



230 W. Monroe St.  
Suite 2205  
Chicago, IL 60606  
t: 312.424.0330  
f: 312.424.0111  
www.toeltd.com



PBC Project #05267

**William Jones College  
Preparatory High School Renovation**

**Chicago Public Schools**

606 South State Street  
Chicago, Illinois

Copyright © 2013 Perkins+Will

Sheet Information

Date	03 May, 2013
Job Number	022099.00
Scale	3" = 1'-0"
Drawn	ZZ
Checked	YJ
Approved	YJ

Addendum No. 2

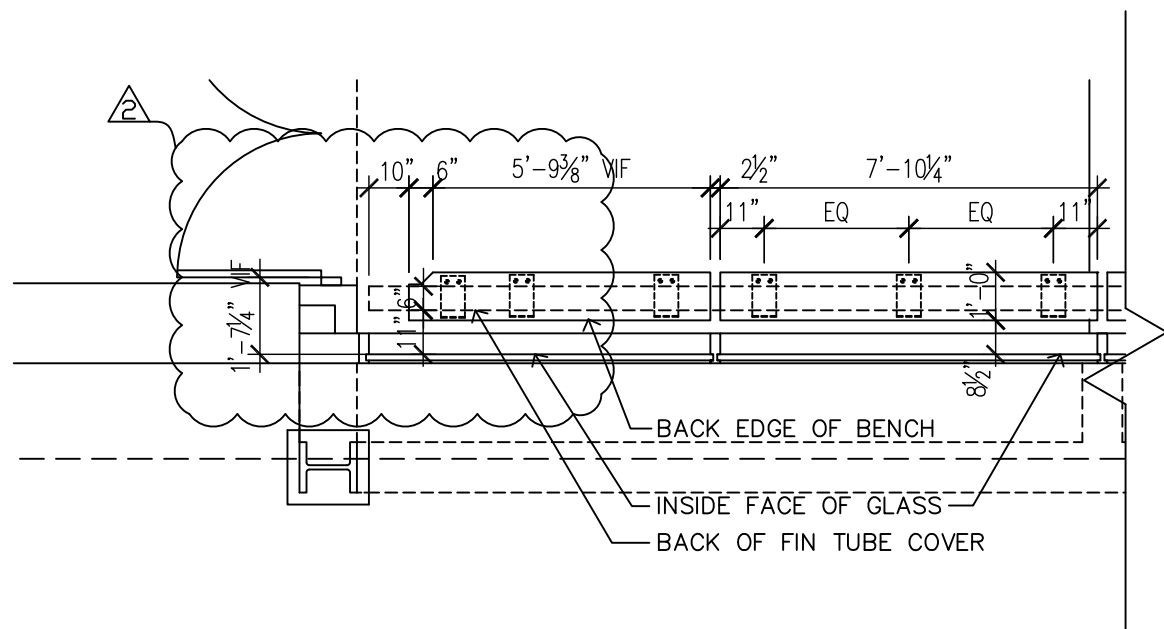
Title

Building A 5th Floor:  
Pre-Law 505  
New Construction Plan

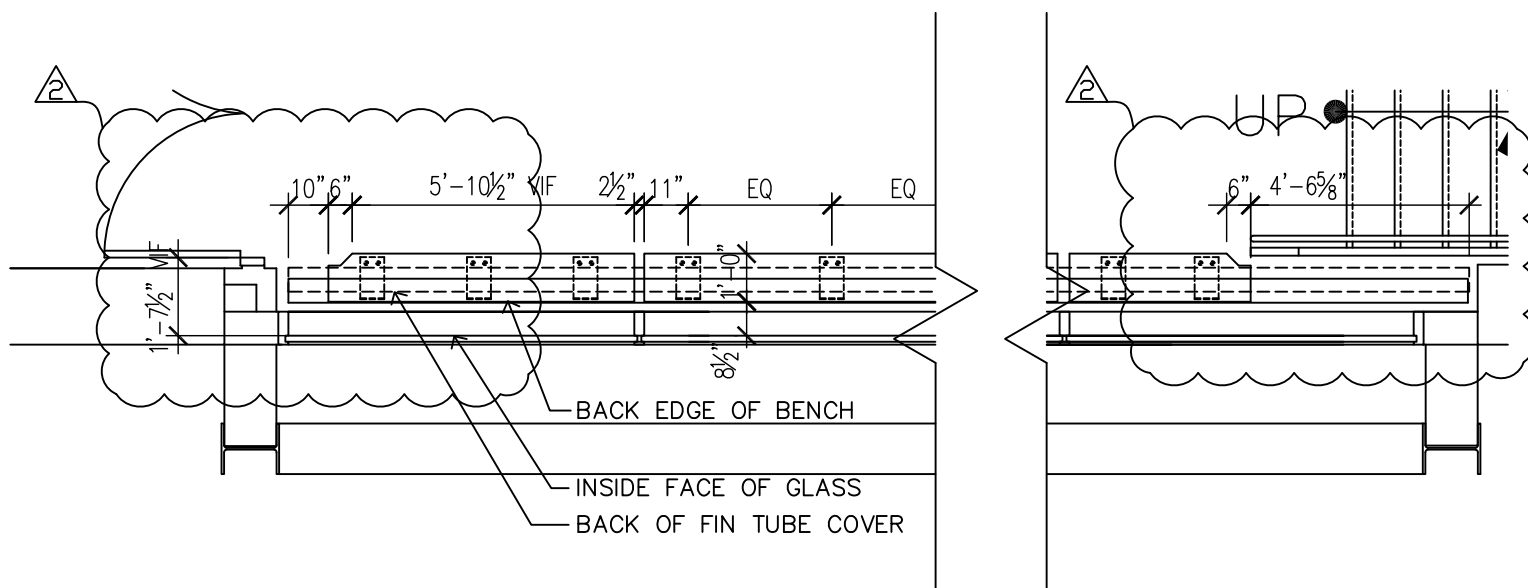
Sheet

SK\_TAEL\_ZZ\_A8.01-3  
DWG2\_20130503

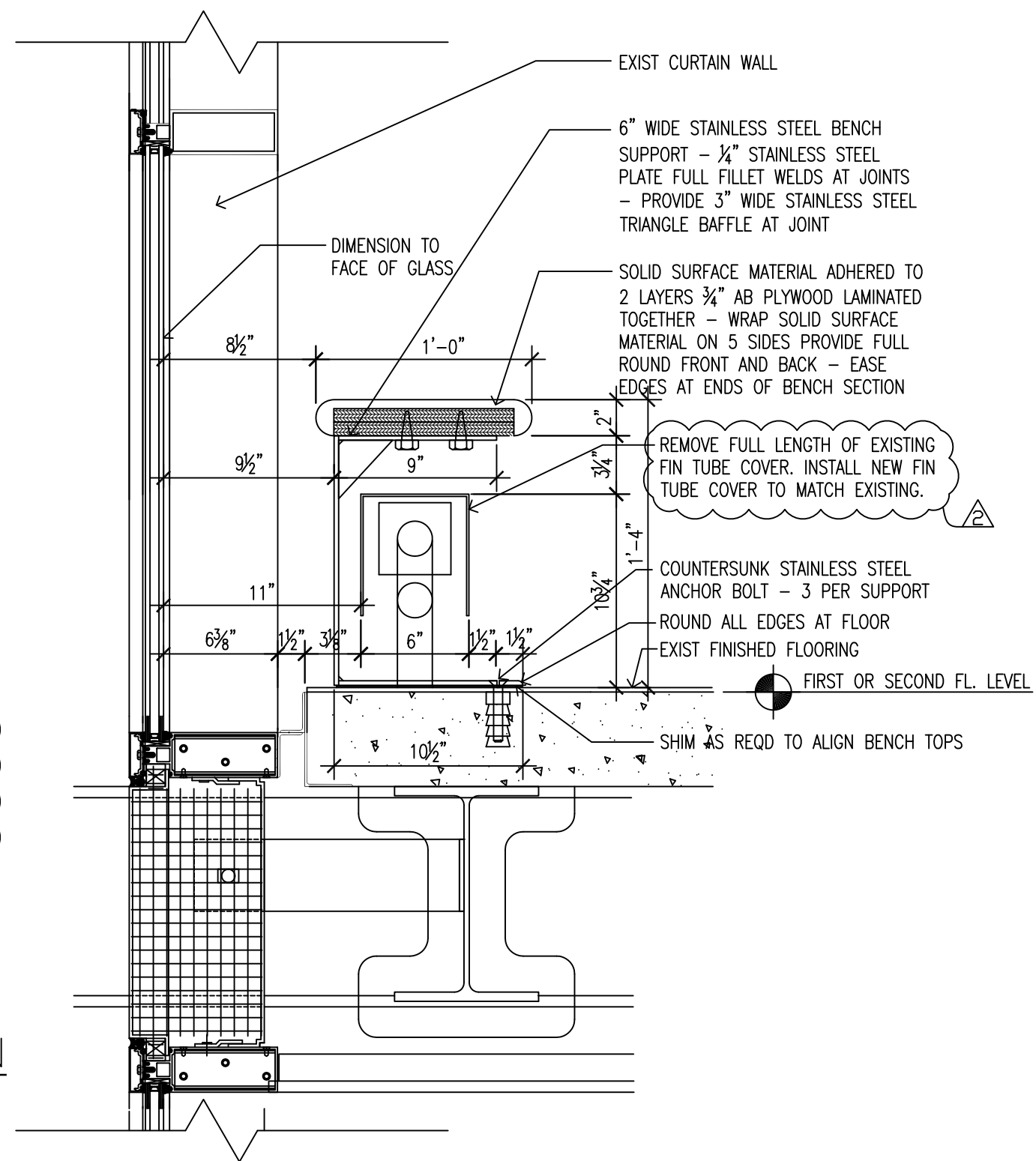
2"  
1"  
1/2"  
0



1 BLDG. C 1ST FLOOR - NEW BENCH CONST. PLAN  
SCALE: 1/4" = 1'-0"



2 BLDG. C 2ND FLOOR - NEW BENCH CONST. PLAN  
SCALE: 1/4" = 1'-0"



3 SECT THRU BENCH ABOVE FIN TUBE  
SCALE: 1 1/2" = 1'-0"

**PERKINS  
+WILL**  
330 N. Wabash Ave.  
Suite 3600  
Chicago, IL 60611  
t: 312.755.0770  
f: 312.755.0775  
www.perkinswill.com

230 W. Monroe St.  
Suite 2205  
Chicago, IL 60606  
t: 312.424.0330  
f: 312.424.0111  
www.toeltd.com

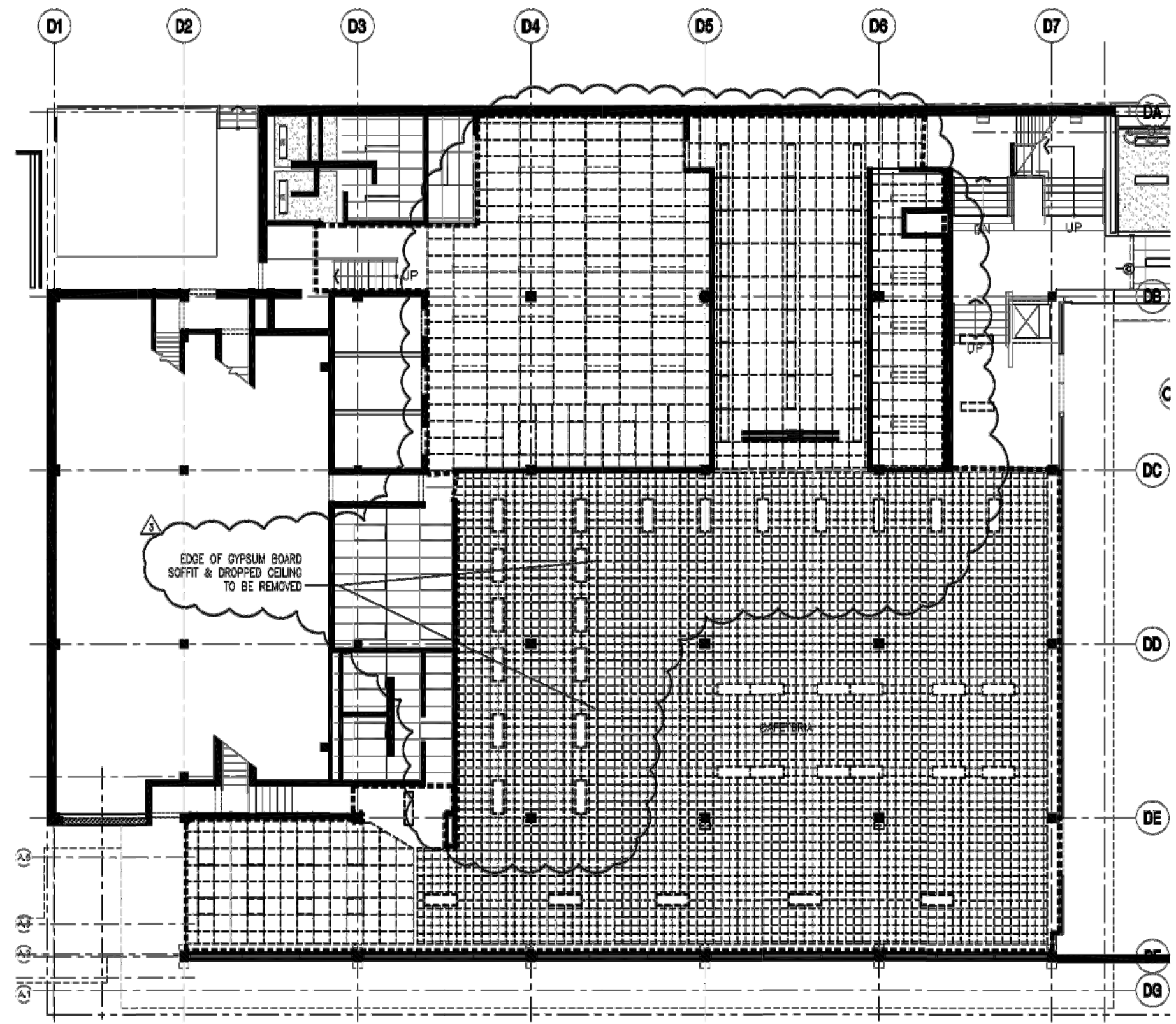
OF CHICAGO  
**BUILDING SCHOOLS  
ACROSS CHICAGO**  
CHICAGO PUBLIC SCHOOLS  
CPS  
PBC Project #05267

**William Jones College  
Preparatory High School Renovation**  
**Chicago Public Schools**  
606 South State Street  
Chicago, Illinois  
Copyright © 2013 Perkins+Will

Sheet Information	
Date	03 May, 2013
Job Number	022099.00
Scale	Varies
Drawn	ZZ
Checked	YJ
Approved	YJ

Addendum No. 2

Title  
Building C 1st & 2nd Floors:  
New Bench Construction  
Plan & Details  
Sheet  
SK\_TAE\_L\_ZZ\_A8.03  
DWGS1-2-3\_20130503



**1** BUILDING 'D' LEVEL 01 CAFETERIA DEMOLITION RC PLAN / PHASE I  
 1/8" = 1'-0" REFER TO SCOPE NOTES 4.1-4.8 & 5.1-5.3

**PERKINS  
+WILL**  
 330 N. Wabash Ave.  
 Suite 6600  
 Chicago, IL 60611  
 t 312.765.0770  
 f 312.765.0775  
 www.perkinswill.com

230 W. Monroe St.  
 Suite 2205  
 Chicago, IL 60606  
 t 312.424.0390  
 f 312.424.0181  
 www.pbc.com



PBC Project #05267

**William Jones College  
Preparatory High School Renovation**  
**Chicago Public Schools**  
 606 South State Street  
 Chicago, Illinois

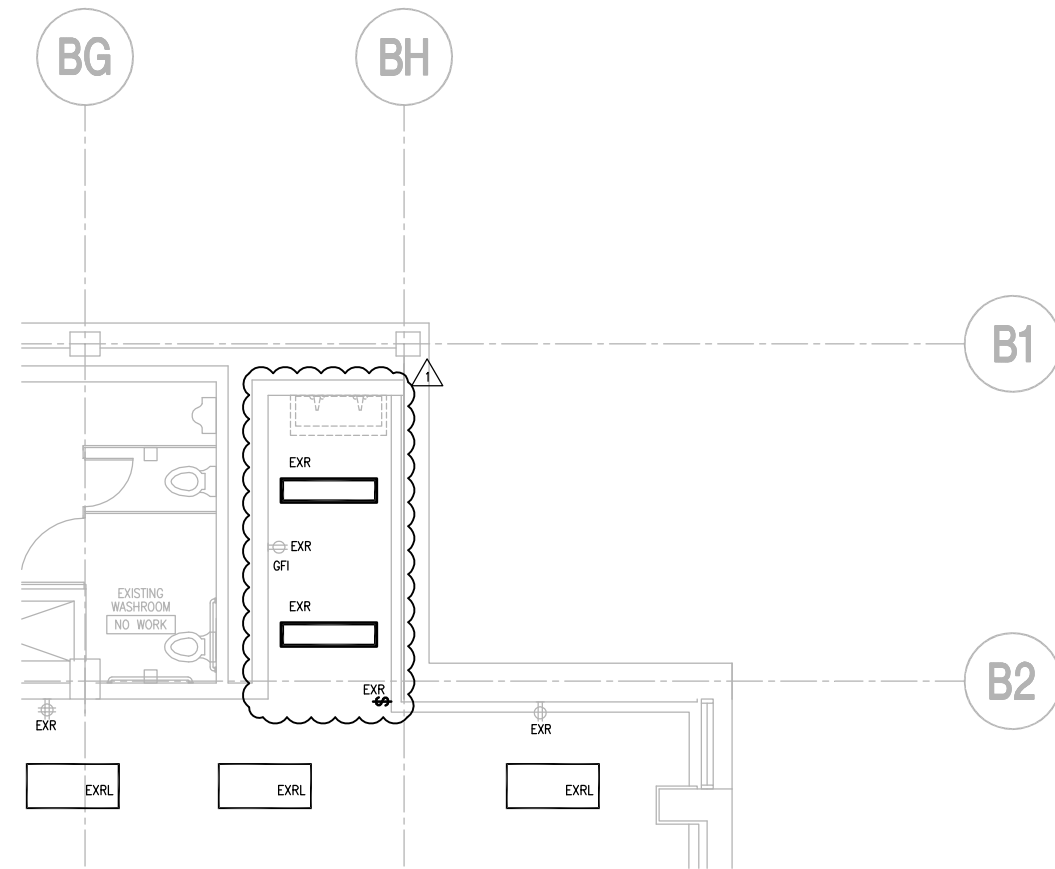
Copyright © 2013 Perkins+Will

Sheet Information	
Date	03 MAY, 2013
Job Number	022099.000
Scale	NONE
Drawn	JAG
Checked	JAG
Approved	JAG

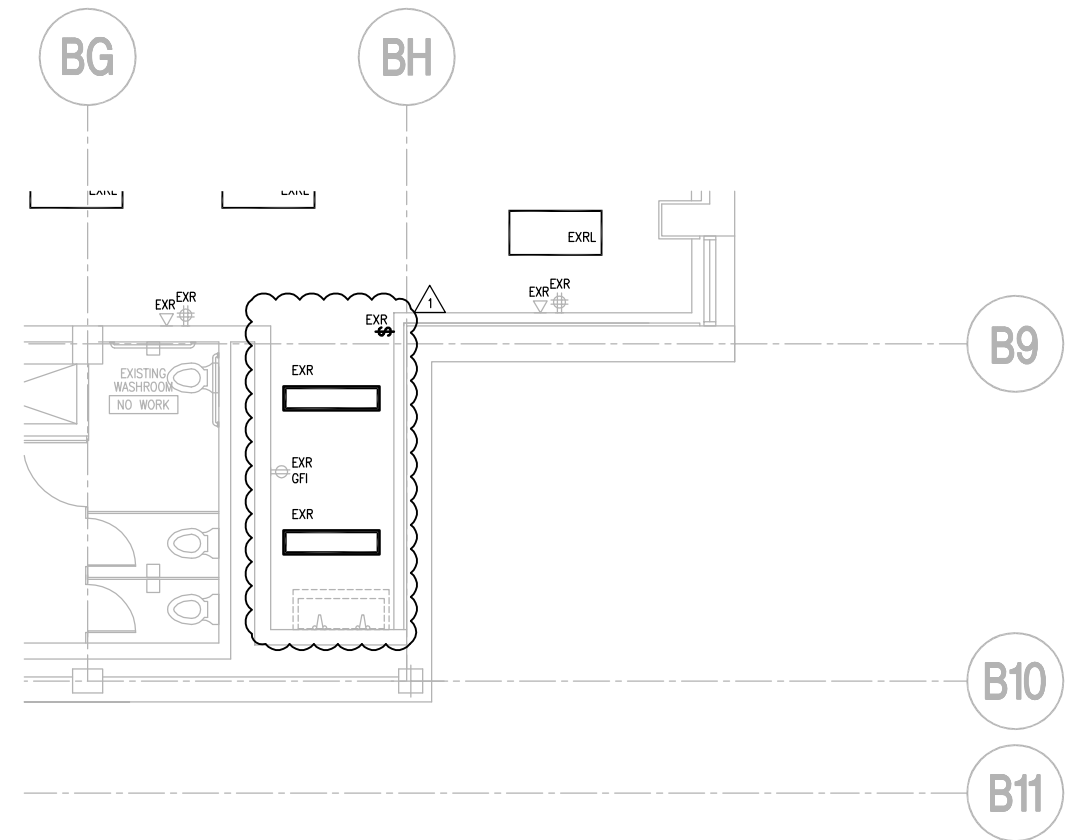
**Building 'D' Level 01  
Cafeteria Demolition  
Reflected Ceiling Plan**  
 Sheet

ADDENDUM NO. 2 SKA804A-20130503





**1 WEST STORAGE DEMOLITION PLAN**  
SCALE: 1/8" = 1'-0"



**2 EAST STORAGE DEMOLITION PLAN**  
SCALE: 1/8" = 1'-0"

**PERKINS  
+ WILL**  
330 N. Wabash Ave.  
Suite 3600  
Chicago, IL 60611  
t 312.765.0770  
f 312.765.0776  
www.perkinswill.com

  
230 W. Monroe St.  
Suite 2205  
Chicago, IL 60606  
t 312.424.0330  
f 312.424.0111  
www.cpsd.net

**OF CHICAGO**  
**BUILDING SCHOOLS  
ACROSS CHICAGO**  
  
**PBC Project #05267**

**William Jones College  
Preparatory High School Renovation**  
**Chicago Public Schools**  
606 South State Street  
Chicago, Illinois

Copyright © 2013 Perkins+Will

Sheet Information	
Date	05/03/2013
Job Number	22099.000
Scale	AS NOTED
Drawn	RP
Checked	LKF
Approved	LKF

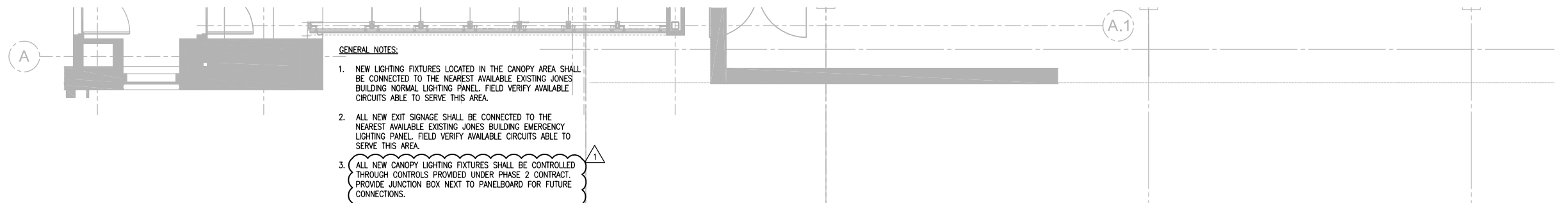
**BLDG B 2ND FLOOR  
ELECTRICAL DEMO PLAN  
REFERENCE DRAWING E12B**

Sheet

ESK-001

ISSUED FOR ADDENDUM NO. 2

2"  
1"  
1/2"  
0



LIGHTING FIXTURE SCHEDULE										
TAG	DESCRIPTION	MANUFACTURER	MODEL	LAMPS QTY.	TYPE	LAMP BALLAST	VOLTAGE	FIXTURE WATTS	MOUNTING	REMARKS
F24D	6" LENSED DOWNLIGHT HORIZONTAL LAMP WET LOCATION LABEL	LITHONIA WILLIAMS	AF-1/42TRT-6AR-LD-CGL-MVOLT-ADCF-WL PH60-142T-CS-AC/CGS-EB1-120MOD	1	CFTR42W/GX24Q/835	ELECTRONIC PHILIPS ADVANCE MATCH BALLAST MANUFACTURER AND EXACT MODEL NUMBER TO NEW JONES H.S. COORDINATE CONTRACTOR - ELITE ELECTRIC	120V	45W	RECESSED CEILING	COORDINATE FINISH WITH ARCHITECT

**1 LIGHTING FIXTURE SCHEDULE AND NOTES**  
SCALE: NTS

**PERKINS + WILL**  
330 N. Wabash Ave.  
Suite 3600  
Chicago, IL 60611  
t 312.765.0770  
f 312.765.0776  
www.perkinswill.com

230 W. Monroe St.  
Suite 2205  
Chicago, IL 60606  
t 312.424.0330  
f 312.424.0111  
www.cps.edu

**OF CHICAGO**  
**BUILDING SCHOOLS ACROSS CHICAGO**  
CHICAGO PUBLIC SCHOOLS CPS  
**PBC Project #05257**

**William Jones College Preparatory High School Renovation**  
**Chicago Public Schools**  
606 South State Street  
Chicago, Illinois

**Sheet Information**

Date	05/03/2013
Job Number	22099.000
Scale	AS NOTED
Drawn	RP
Checked	LKF
Approved	LKF

**1ST FLOOR NEW LINK ELECTRICAL LIGHTING PLAN REFERENCE DRAWING E3.1D**

Sheet

0 1/2" 1" 2"

LIGHTING FIXTURE SCHEDULE										
TAG	DESCRIPTION	MODEL	BALLAST/DRIVER TYPE	LAMPS QTY.	LAMP TYPE	VOLTAGE	FIXTURE WATTS	MOUNTING	REMARKS	
NRL	2'x4' AIR HANDLING 3" DEEP 18 CELL PARABOLIC LOUVER. PROGRAMMED START	EXISTING - VERIFY IN FIELD	EXISTING TO REMAIN	3	F32W/T8/835  MATCH LAMP MANUFACTURER AND EXACT MODEL NUMBER TO NEW JONES H.S. COORDINATE W/NEW JONES H.S. ELECTRICAL CONTRACTOR - ELITE ELECTRIC	120V	95	RECESSED CEILING	ALL LIGHTING FIXTURES TO BE RELOCATED IN EXISTING LOCATIONS. MAINTAIN BI-LEVEL WIRING	

**1 EXISTING LIGHTING FIXTURE SCHEDULE**  
SCALE: NTS

**PERKINS + WILL**  
330 N. Wabash Ave.  
Suite 3600  
Chicago, IL 60611  
t 312.765.0770  
f 312.765.0776  
www.perkinswill.com

  
230 W. Monroe St.  
Suite 2205  
Chicago, IL 60606  
t 312.424.0350  
f 312.424.0111  
www.cpsd.net

**OF CHICAGO**  
**BUILDING SCHOOLS ACROSS CHICAGO**  
CHICAGO PUBLIC SCHOOLS CPS  
**PBC Project #08267**

**William Jones College Preparatory High School Renovation**  
**Chicago Public Schools**  
606 South State Street  
Chicago, Illinois

Sheet Information	
Date	05/03/2013
Job Number	22099.000
Scale	AS NOTED
Drawn	RP
Checked	LKF
Approved	LKF

**Title**  
**BLDG A 1ST FLOOR ELECTRICAL LIGHTING PLAN REFERENCE DRAWING E3.2A**

**Sheet**

Copyright © 2013 Perkins+Will **ISSUED FOR ADDENDUM NO. 2**

ESK-003