

Proposed New Jones HS NIC

GENERAL NOTES

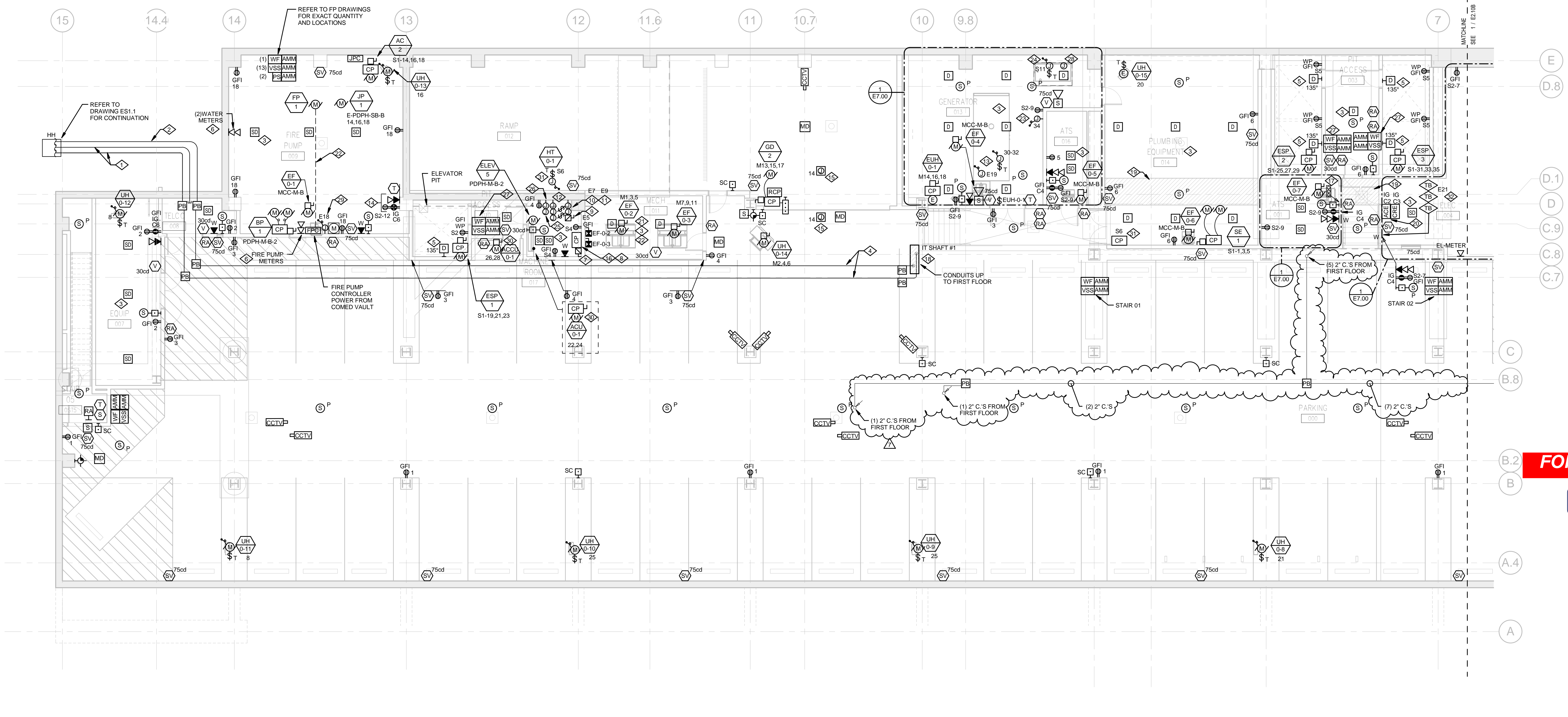
- ALL VISUAL FIRE ALARM DEVICES TO BE FURNISHED WITH FIELD ADJUSTABLE SETTINGS, INITIALLY SET AT VALUES AS INDICATED. ADJUST SETTINGS BASED ON FIELD TESTING AS REQUIRED.
- ALL ELEVATOR POWER, COMMUNICATIONS, AND MISCELLANEOUS SYSTEMS REQUIREMENTS SHALL BE COORDINATION WITH ELEVATOR SHOP DRAWINGS.
- ALL GENERAL RECEPTACLE AND 120V/1 ϕ , 208V/1 ϕ EQUIPMENT CIRCUITS WITH NO ALPHABETICAL PREFIX EMANATE FROM PANEL RP-CP-B, U.N.O.
- ALL 480V/3 ϕ AND 277V/1 ϕ MECHANICAL EQUIPMENT CIRCUITS DENOTED "MX" EMANATE FROM PANEL PPH-M-B, U.N.O.
- ALL EMERGENCY EQUIPMENT CIRCUITS DENOTED "EXX" EMANATE FROM PANEL E-LP-B, U.N.O.
- ALL 480V/3 ϕ AND 277V/1 ϕ STANDBY POWER EQUIPMENT CIRCUITS DENOTED "S1-XX" EMANATE FROM PANEL E-PPH-SB-B, U.N.O.
- ALL 120V/1 ϕ STANDBY POWER EQUIPMENT CIRCUITS DENOTED "S2-XX" EMANATE FROM PANEL E-RP-SB-B, U.N.O.
- ALL COMPUTER CIRCUITS DENOTED "CXX" EMANATE FROM PANEL RP-CP-B.
- ALL SECURITY CCTV CAMERAS SHALL BE SUSPENDED 1" HIGHER THAN THE BOTTOM OF THE LOWEST STRUCTURAL BEAM LOCATED WITHIN 36FT OF EACH DEVICE. ADJUST EXACT LOCATION AND FIELD OF VIEW FOR EACH CAMERA BASED ON ACTUAL OBSTRUCTIONS IN FIELD SO CAMERA'S FIELD OF VIEW IS NOT OBSTRUCTED.
- IN FINISHED AREAS CAMERAS SHALL BE CEILING MOUNTED.
- SEE ENLARGED ELECTRICAL PLANS SHEET E7.00 FOR ELECTRICAL EQUIPMENT (PANELBOARDS, DISTRIBUTION BOARDS, TRANSFORMERS, ETC.) LOCATED IN ELECTRICAL ROOMS.
- LOCATE INTERCOM PAGING SPEAKERS IN STAIRWELLS ON EVERY LANDING.

KEYED NOTES

- AT&T SERVICE ENTRANCE (2) 4" C'S FOR SERVICE ENTRANCE CABLES. FURNISHED AND INSTALLED BY SERVICE PROVIDER. PROVIDE INNER DUCT AND PULL STRING. CABLES SHALL BE ROUTED TO DEMARCATION POINT LOCATED IN 3RD FLOOR MDF ROOM. (1) SPARE CONDUIT SHALL BE STUBBED INTO TELCO ROOM AND CAPPED FOR FUTURE.
- COMCAST SERVICE ENTRANCE: PROVIDE (1) 3" C' FOR SERVICE ENTRANCE CABLES TO BE INSTALLED BY SERVICE PROVIDER. PROVIDE PULL STRING. CABLE SHALL BE ROUTED IN CONDUIT TO DEMARCATION POINT LOCATED IN 3RD FLOOR MDF ROOM.
- SMOKE AND HEAT DETECTORS TO BE INSTALLED IN EVERY BEAM POCKET. TYPICAL FOR ALL AREAS WITH OPEN CEILING.
- (1)3" AND (1)4" C'S FOR (1)AT&T AND CATV (COMCAST) SERVICES UP TO THIRD FLOOR MDF ROOM. INSTALL TIGHT TO CEILING BEAMS.
- MOUNT HEAT DETECTOR WITHIN 2' OF SPRINKLER HEAD. WALL MOUNT WHEN POSSIBLE.
- LOCATION OF WATER METERS. SEE DETAIL 4 ON SHEET E5.01 FOR GROUNDING REQUIREMENTS.
- FUSED ELEVATOR DISCONNECT SWITCH WITH AUXILIARY CONTACTS AS MANUFACTURED BY BUSSMANN OR APPROVED EQUAL. FINAL LOCATION SHALL BE COORDINATED WITH ELEVATOR SHOP DRAWINGS PRIOR TO INSTALLATION AND FEEDER CONDUIT ROUTING.
- ELEVATOR CONTROLLER FINAL LOCATION SHALL BE COORDINATED WITH ELEVATOR SHOP DRAWINGS.
- PROVIDE 120V, 1P, 20A CIRCUIT FROM LIFE SAFETY PANEL TO ELEVATOR CAB LIGHT AND FAN. PROVIDE 20A/1P LOCAL DISCONNECT SWITCH.
- PROVIDE 120V, 1P, 20A CIRCUIT FROM LIFE SAFETY PANEL FOR ELEVATOR INTERCOM SYSTEM. PROVIDE 20A/1P PANEL DISCONNECT SWITCH.
- PROVIDE 120V, 1P, 20A CIRCUIT FROM LIFE SAFETY PANEL FOR ELEVATOR SECURITY SYSTEM. PROVIDE 20A/1P PANEL DISCONNECT SWITCH.
- PROVIDE (3) ADDRESSABLE RELAY MODULES FOR INTERFACE WITH FIRE ALARM SYSTEM FOR THE FOLLOWING FUNCTIONS:
 - PRIMARY RECALL
 - ALTERNATE RECALL (SPARE)
 - NOTIFICATION ON FACP AND FAA (FIREMAN HAT)
- POWER FOR GENERATOR JACKET HEATER AND CONTROL PANEL.
- FINAL BAS LOCATIONS AND QUANTITY TO BE COORDINATED WITH BAS INSTALLER.
- JUNCTION BOX TO MOUNT SENSORS FOR AUTOMATIC DOOR OPENER. REFER TO DRAWING E2.11A FOR CONTROL PANEL LOCATION. DIV. 16 CONTRACTOR TO PROVIDE ALL CONDUIT, WIRING, AUXILIARY DEVICES ARE REQUIRED BY MANUFACTURER INSTALLATION INSTRUCTIONS FOR COMPLETE AND OPERATIONAL SYSTEM. REFER TO KEYED NOTE 10, DRAWING E2.11A.

KEYED NOTES

- PROVIDE (2) #12AWG-3/4" C FROM E-ATS-ELEV-B TO ELEVATOR CONTROLLER. UTILIZE 2-HOUR RATED C CABLE IN CONDUIT, WHEN INSTALLED OUTSIDE 2-HOUR RATED ENCLOSURE.
- FIRE ALARM RETURN RISERS FROM ABOVE.
- IT SHAFT #1: LOCATION OF CONDUIT SLEEVES STUB UP TO FIRST FLOOR FOR AT&T AND COMCAST SERVICE ENTRANCE CABLES, AND MISCELLANEOUS LOW VOLTAGE SYSTEMS CABLES SERVING BASEMENT. REFER TO DRAWING E2.11A FOR ROUTING CONTINUATION. ALL CABLEING TO BE INSTALLED IN CONDUIT.
- 2-HOURS FIRE RATED SOFFIT BY OTHERS FOR EMERGENCY POWER FEEDERS, FIRE ALARM AND MISCELLANEOUS SYSTEMS CONDUIT ROUTING. VERIFY EXACT LOCATION AND ELEVATION WITH ARCHITECTURAL DRAWINGS.
- ADMINISTRATIVE CONCENTRATOR ENCLOSURE TO BE FED FROM PANEL RP-CP-B. ACE TO SERVE ALL DATA VOICE OUTLETS IN BASEMENT LEVEL.
- ALL ELECTRICAL DEVICES, DISCONNECT SWITCHES, JUNCTION AND PULL BOXES LOCATED IN THIS ROOM, RESPECTIVE CONDUIT AND WIRING INSTALLATION SHALL COMPLY WITH CEC REQUIREMENTS FOR INSTALLATION IN AIR HANDLING SPACES. VERIFY EXACT EXTENT OF PLENUM RATED SPACES WITH DIV. 15 DRAWINGS.
- UNDERGROUND CONCRETE-ENCASED FEEDER. REFER TO RISER DIAGRAM DRAWING, E4.04.
- GENERATOR BATTERY CHARGER.
- FUEL TANK CONNECTION.
- FIRE ALARM SPEAKER CONNECTION. PROVIDE NOTIFICATION CIRCUIT FROM NEAREST POWER SUPPLY.
- PROVIDE "PLAIN OLD TELEPHONE SERVICE" (POTS) LINE CONNECTION TO PHONE, INSTALLED BY OTHER, IN ELEVATOR CAB.
- FOR ELEVATOR PIT.
- PROVIDE (1)1" C, WITH WIRING AS REQUIRED BY MANUFACTURER FOR LOW LEVEL FUEL ALARM. TERMINATE CONDUIT IN REMOTE LOW LEVEL FUEL ALARM PANEL LOCATED IN ENGINEER'S OFFICE, ROOM #174.
- 120V/1 ϕ CONTROL CIRCUIT FOR FIRE ALARM BELLS.
- PROVIDE (1)1" C, FROM ACU-0-1 TO ACQU-0-2 FOR CONTROL WIRING.
- HEAT TRACE CONTROL PANEL AND CONNECTION - EQUIPMENT AND CABLE FURNISHED BY DIV. 15. PROVIDE ALL POWER, CONTROLS CONDUIT AND WIRING. INSTALL HEATING CABLES AND MAKE FINAL CONNECTIONS FOR COMPLETE AND OPERATIONAL SYSTEM. COORDINATE WITH DIV. 15 CONTRACTOR. PROVIDE INTERFACE TO BMS.
- FIRE ALARM SPRINKLER SUPERVISORY TROUBLE BELLS. LOCATE ABOVE FIRE ALARM PANELS.



FOR REFERENCE ONLY

INFORMATION ONLY

NO	ISSUE	DATE
7	BULLETIN NO 52	04/17/13
6	ISSUED FOR PERMIT	05/25/11
5	ISSUED FOR GC BID	05/25/11
4	ISSUED FOR 90% CD	04/01/11
3	ISSUED FOR 60% CD	01/11/11
2	ISSUED FOR DESIGN DEVELOPMENT	10/28/10
1	ISSUED FOR SCHEMATIC DESIGN	08/24/10

Sheet Information	
Date	03/06/13
PBC Project	Wm Jones College Prep HS
PBC Contract No.	05285
Perkins+Will Job No.	022093.00
Drawn	DWM
Checked	DNT
Approved	RGL

BASEMENT FLOOR POWER AND SYSTEMS PLAN AREA A

Sheet
E2.10A

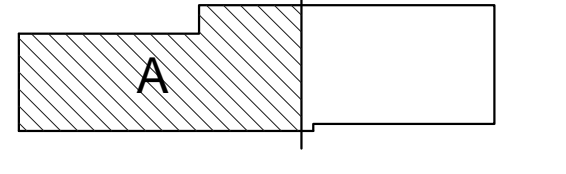


**William Jones
College Preparatory
High School**
700 South State Street
Chicago, IL 60605

**PERKINS
+ WILL**
330 North Wabash Ave.
Suite 3900
Chicago, IL 60611
312.755.0770
312.755.0775
www.perkinswill.com

The Architects Enterprise, Ltd.
230 West Monroe St.
Suite 2205
Chicago, IL 60606
312.424.0330
312.424.0311
www.taefd.com

- STRUCTURAL ENGINEER
Halvorson and Partners
Chicago, IL
- STRUCTURAL ENGINEER
Drucker Zajdel Structural Engineers
Naperville, IL
- MECHANICAL ENGINEER
Primera Engineers
Chicago, IL
- CIVIL ENGINEER
Terra Engineering
Chicago, IL
- LANDSCAPE ARCHITECT
Site Design Group, Ltd.
Chicago, IL
- VERTICAL TRANSPORTATION CONSULTANT
Jenkins & Huntington, Inc.
Wilmette, IL
- FOOD SERVICE CONSULTANT
Cini-Little International, Inc.
Naperville, IL
- THEATER DESIGN CONSULTANT
Schuler Shook
Chicago, IL
- ACOUSTIC / AUDIO-VISUAL CONSULTANT
Talaske
Oak Park, IL
- NATATORIUM CONSULTANT
Bill Robertson Pool Design/Built, Inc.
Northville, MI



Revisions

1 BASEMENT FLOOR POWER AND SYSTEMS PLAN - AREA A
1/8" = 1'-0"



Proposed New Jones HS NIC

GENERAL NOTES

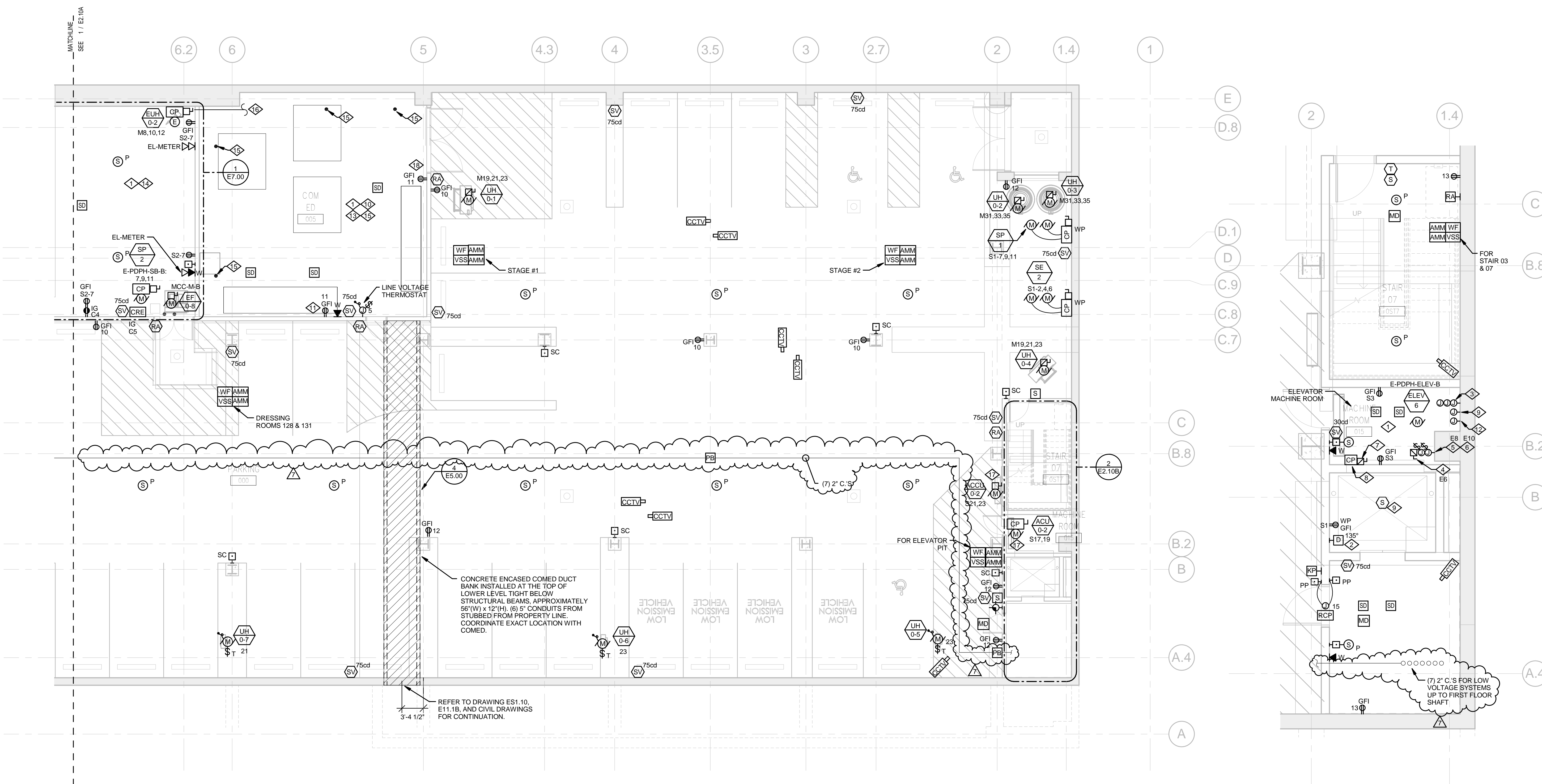
- ALL VISUAL FIRE ALARM DEVICES TO BE FURNISHED WITH FIELD ADJUSTABLE SETTINGS. INITIALLY SET AT VALUES AS INDICATED. ADJUST SETTINGS BASED ON FIELD TESTING AS REQUIRED.
- ALL ELEVATOR POWER, COMMUNICATIONS, AND MISCELLANEOUS SYSTEMS REQUIREMENTS SHALL BE COORDINATION WITH ELEVATOR SHOP DRAWINGS.
- ALL GENERAL RECEPTACLE AND 120V/1ϕ, 208V/1ϕ EQUIPMENT CIRCUITS WITH NO ALPHABETICAL PREFIX EMANATE FROM PANEL 'RP-GP-B', U.N.O.
- ALL 480/3ϕ AND 277/1ϕ MECHANICAL EQUIPMENT CIRCUITS DENOTED 'MX' EMANATE FROM PANEL 'PPH-M-B', U.N.O.
- ALL EMERGENCY EQUIPMENT CIRCUITS DENOTED 'EXX' EMANATE FROM PANEL 'E-LP-B', U.N.O.
- ALL 480/3ϕ AND 277/1ϕ STANDBY POWER EQUIPMENT CIRCUITS DENOTED 'S1-XX' EMANATE FROM PANEL 'E-PDPH-SB-B', U.N.O.
- ALL 120/1ϕ AND 208V/1ϕ STANDBY POWER EQUIPMENT CIRCUITS DENOTED 'S2-XX' EMANATE FROM PANEL 'E-RP-SB-B', U.N.O.
- ALL SECURITY CCTV CAMERAS SHALL BE SUSPENDED 1" HIGHER THAN THE BOTTOM OF THE LOWEST STRUCTURAL BEAM LOCATED WITHIN 35FT OF EACH DEVICE. ADJUST EXACT LOCATION AND FIELD OF VIEW FOR EACH CAMERA BASED ON ACTUAL OBSTRUCTIONS IN FIELD SO CAMERA FIELD OF VIEW IS NOT OBSTRUCTED.
- ALL ISOLATED GROUND COMPUTER CIRCUITS INDICATED AS 'CXX' EMANATE FROM PANEL 'RP-C-P'.
- ALL INTERIOR CCTV CAMERAS IN FINISHED AREAS SHALL BE CEILING MOUNTED WHERE POSSIBLE. REFER TO TYPICAL CCTV DETAILS, DRAWING E5.07.
- SEE ENLARGED ELECTRICAL PLANS SHEET E7.00 FOR ELECTRICAL EQUIPMENT (PANELBOARDS, DISTRIBUTION BOARDS, TRANSFORMERS, ETC.) LOCATED IN ELECTRICAL ROOMS.
- LOCATE INTERCOM PAGING SPEAKERS IN STAIRWELLS ON EVERY LANDING.

KEYED NOTES

- SMOKE AND HEAT DETECTORS TO BE INSTALLED IN EVERY BEAM POCKET.
- MOUNT HEAT DETECTOR WITHIN 2' OF SPRINKLER HEAD. WALL MOUNT WHEN POSSIBLE.
- PROVIDE (3) ADDRESSABLE RELAY MODULES PER ELEVATOR FOR INTERFACE WITH FIRE ALARM SYSTEM FOR THE FOLLOWING FUNCTIONS:
PRIMARY RECALL
- ALTERNATE RECALL (SPARE)
NOTIFICATION ON FACP AND FAA (FIREMAN HAT)
- PROVIDE 120V, 1P, 20A CIRCUIT FROM LIFE SAFETY PANEL TO ELEVATOR CONTROL PANEL FOR ELEVATOR CAB LIGHTS AND FAN. PROVIDE 20A/1P LOCAL DISCONNECT SWITCH.
- PROVIDE 120V, 1P, 20A CIRCUIT FROM LIFE SAFETY PANEL FOR ELEVATOR INTERCOM SYSTEM. PROVIDE 20A/1P LOCAL DISCONNECT SWITCH.
- PROVIDE 120V, 1P, 20A CIRCUIT FROM LIFE SAFETY PANEL FOR ELEVATOR SECURITY SYSTEM. PROVIDE 20A/1P LOCAL DISCONNECT SWITCH.
- FUSED ELEVATOR DISCONNECT SWITCH WITH AUXILIARY CONTACTS AS MANUFACTURED BY BUSSMANN OR APPROVED EQUAL. FINAL LOCATION SHALL BE COORDINATED WITH ELEVATOR SHOP DRAWINGS PRIOR TO INSTALLATION AND FEEDER CONDUIT ROUTING.
- ELEVATOR CONTROLLER FINAL LOCATION SHALL BE COORDINATED WITH ELEVATOR SHOP DRAWINGS.
- FIRE ALARM SPEAKER CONNECTION. PROVIDE NOTIFICATION CIRCUIT FROM NEAREST POWER SUPPLY.
- COMED VAULT FITOUT IS PROVIDED BY COMED, INCLUDING DISTRIBUTION EQUIPMENT TRANSFORMER AND ALL INTERCONNECTIONS. DIV. 16 CONTRACTOR SHALL COORDINATE INSTALLATION OF SMOKE DETECTORS, OTHER DEVICES WITH COMED EQUIPMENT LOCATIONS - DO NOT INSTALL ANY DEVICES DIRECTLY ABOVE OR BEHIND COMED EQUIPMENT. ALL LOCATIONS SHALL BE ACCESSIBLE FOR FUTURE MAINTENANCE.

KEYED NOTES

- COMBINATION DUPLEX 15 AMP, 125V/2ϕ, 3W, NEMA LS-15R25-15R GROUNDING TYPE RECEPTACLE (HUBBELL CAT. NO. 4752 OR EQUIVALENT) LOCATED 3'-0" ABOVE FLOOR.
- PROVIDE "PLAIN OLD TELEPHONE SERVICE" (POTS) LINE CONNECTION TO PHONE, INSTALLED BY OTHER, IN ELEVATOR CAB.
- SECONDARY SERVICE CONDUITS SHALL BE EXTENDED 3" MINIMUM INTO COMED VAULT. TERMINATE WITH GROUNDING TYPE INSULATION BUSHINGS (OZ TYPE BUSHINGS OR EQUIVALENT). CONCRETE ENVELOPE IS NOT REQUIRED. INSIDE COMED VAULT, SPARE CONDUITS TO BE THREADED AND CAPPED. USE 4" LONG RADIUS BEND WITH MAXIMUM TOTAL OF 250 DEGREES OF BENDS IN ONE CONDUIT RUN. PULL PROPER SIZE WIRE BRUSH THRU ALL DUCTS. LEAVE #8 GALVANIZED PULLING WIRE, NYLON CORD OR POLYPROPYLENE ROPE IN DESIGNATED BY COMED DUCTS. SEAL DUCTS TEMPORARILY.
- ALL SECONDARY SERVICE ENTRANCE CABLE AND/OR SECONDARY LUGS TO BE PROVIDED BY DIV. 16 CONTRACTOR. COORDINATE WITH COMED EXACT REQUIREMENTS.
- COMED VAULT GROUNDING: COORDINATE ALL WORK WITH COMED GROUNDING RODS FURNISHED BY COMED ARE TO BE INSTALLED BY THE DIV. 16 CONTRACTOR. CONNECT WITHIN 18"± OF 1/2" BARE COPPER CABLE IN 1-1/2" C. GROUND MUST MEET COMED REQUIREMENTS.
- 4/0-1/2" BARE COPPER CABLE IN 1-1/4" GALVANIZED STEEL CONDUIT WITH BUSHING TO BUILDING GROUND BUS FOR COMED GROUNDING PURPOSES. CONDUIT MUST BE BONDED TO CABLE AS SHOWN ON COMED STANDARDS CUT25 OR C0726. CABLE SHALL EXTEND 3' INTO VAULT. ALL GROUND RODS SHALL BE INTERCONNECTED TO THE GROUND CABLE.
- PROVIDE (1)11°C. FOR CONTROL WIRING FROM ACU-0-2 TO ACCU-0-2.



1 BASEMENT FLOOR POWER AND SYSTEMS PLAN - AREA B
1/8" = 1'-0"

2 ENLARGED BASEMENT FLOOR NORTH
1/4" = 1'-0"

FOR REFERENCE ONLY

INFORMATION ONLY

NO	ISSUE	DATE
7	BULLETIN NO 52	04/17/13
6	ISSUED FOR PERMIT	05/25/11
5	ISSUED FOR GC BID	05/25/11
4	ISSUED FOR 90% CD	04/01/11
3	ISSUED FOR 60% CD	01/11/11
2	ISSUED FOR DESIGN DEVELOPMENT	10/28/10
1	ISSUED FOR SCHEMATIC DESIGN	08/24/10

Sheet Information	
Date	03/06/13
PBC Project	Win Jones College Prep HS
PBC Contract No.	05285
Perkins+Will Job No.	022093.00
Drawn	DWM
Checked	DNT
Approved	RGL

Title
BASEMENT FLOOR POWER AND SYSTEMS PLAN AREA B

Sheet
E2.10B

Copyright © 2010 Perkins+Will

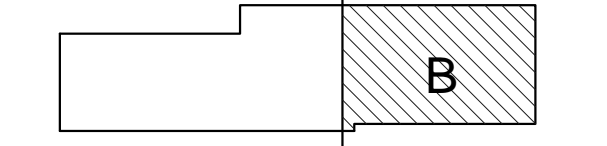


William Jones College Preparatory High School
700 South State Street
Chicago, IL 60605

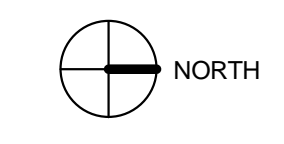
PERKINS + WILL
330 North Wabash Ave.
Suite 3900
Chicago, IL 60611
1312.755.0770
1312.755.0775
www.perkinswill.com

The Architects Enterprise, Ltd.
230 West Monroe St.
Suite 2205
Chicago, IL 60606
1312.424.0330
1312.424.0111
www.taefld.com

- STRUCTURAL ENGINEER
Halvorson and Partners
Chicago, IL
- STRUCTURAL ENGINEER
Drucker Zajdel Structural Engineers
Naperville, IL
- MECHANICAL ENGINEER
Primera Engineers
Chicago, IL
- CIVIL ENGINEER
Terra Engineering
Chicago, IL
- LANDSCAPE ARCHITECT
Site Design Group, Ltd.
Chicago, IL
- VERTICAL TRANSPORTATION CONSULTANT
Jenkins & Huntington, Inc.
Wilmette, IL
- FOOD SERVICE CONSULTANT
Cini-Little International, Inc.
Naperville, IL
- THEATER DESIGN CONSULTANT
Schuler Shook
Chicago, IL
- ACOUSTIC / AUDIO-VISUAL CONSULTANT
Talaske
Oak Park, IL
- NATATORUM CONSULTANT
Bill Robertson Pool Design/Build, Inc.
Northville, MI



Revisions



Proposed New Jones HS NIC

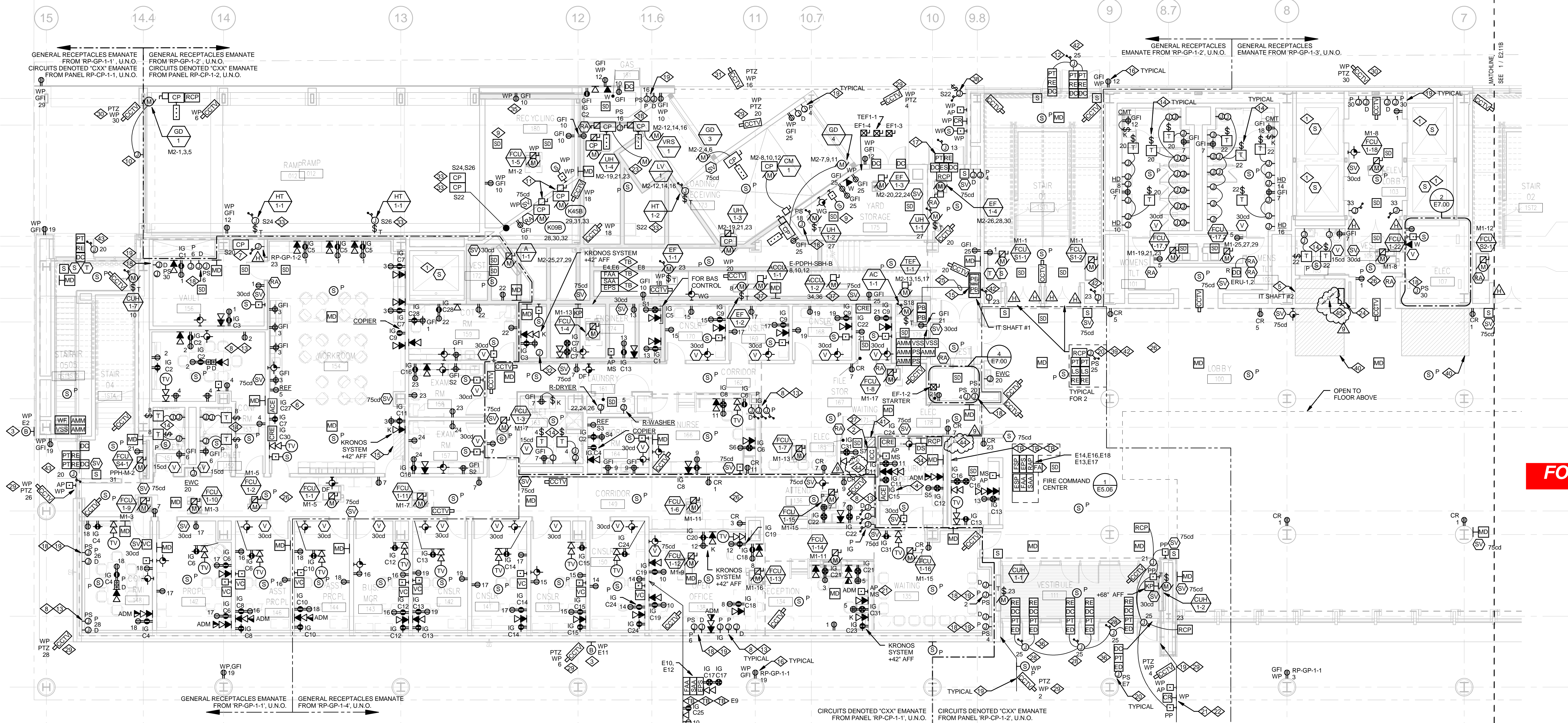
- GENERAL NOTES**
- ALL VISUAL FIRE ALARM DEVICES TO BE FURNISHED WITH FIELD ADJUSTABLE SETTINGS. INITIALLY SET AT VALUES AS INDICATED. ADJUST SETTINGS BASED ON FIELD TESTING AS REQUIRED.
 - SMOKE DETECTORS FOR DOOR HOLDERS RELEASE SHALL BE INSTALLED WITHIN 5' FROM THE CENTERLINE OF THE DOOR OPENING.
 - ALL EMERGENCY RECEPTACLE CIRCUITS DENOTED "EXX" EMANATE FROM PANEL E-1P-1-2, U.N.O.
 - ALL 480V/3Ø AND 277V/1Ø MECHANICAL EQUIPMENT CIRCUITS DENOTED "M1-XX" EMANATE FROM PANEL PPH-M-1-1, U.N.O.
 - ALL 480V/3Ø MECHANICAL EQUIPMENT CIRCUITS DENOTED "M2-XX" EMANATE FROM PANEL PPH-M-1-2, U.N.O.
 - ALL 120V/3Ø STAND BY RECEPTACLE CIRCUITS DENOTED "SXX" EMANATE FROM PANEL E-1P-SB-1, U.N.O.
 - ALL EXTERIOR CCTV CAMERAS SHALL BE SURFACE MOUNTED UNDER THE CANOPY OR WALL BRACKET MOUNTED AT 15' MINIMUM ABOVE FINISHED GRADE WHEN NO CANOPY EXISTS, U.N.O. COORDINATE EXACT MOUNTING HEIGHT WITH ARCHITECTURAL ELEVATIONS. REFER TO TYPICAL CCTV DETAILS DRAWING ES.07.
 - ALL INTERIOR CCTV CAMERAS SHALL BE CEILING MOUNTED WHERE POSSIBLE. REFER TO TYPICAL CCTV DETAILS DRAWING ES.07.
 - DIV. 16 CONTRACTOR SHALL PROVIDE STEP-DOWN TRANSFORMER 120V/240V FOR DOOR HARDWARE WHEN NOT FURNISHED BY DOOR HARDWARE MANUFACTURER. PROVIDE TRANSFORMER IN ENCLOSURE WITH REMOVABLE COVER AND SAFETY DISCONNECT SWITCH. INSTALL TRANSFORMER IN ACCESSIBLE LOCATION ABOVE THE CEILING. WHEN TRANSFORMER IS INSTALLED IN PLENUM RATED CEILING - PROVIDE CEC COMPLIANT PLENUM RATED ENCLOSURE.
 - SEE ENLARGED ELECTRICAL PLANS SHEET E7.00 FOR ELECTRICAL EQUIPMENT (PANELBOARDS, DISTRIBUTION BOARDS, TRANSFORMERS, ETC.) LOCATED IN ELECTRICAL ROOMS.
 - LOCATE INTERCOM PAGING SPEAKERS IN STAIRWELLS ON EVERY LANDING.

- KEYED NOTES**
- FIRE ALARM SPEAKER TO BE INSTALLED IN ELEVATOR CAB.
 - HEAD END INTERCOM SYSTEM EQUIPMENT. PROVIDE 120V/1Ø CIRCUIT FROM STANDBY POWER PANEL.
 - SPRINKLER SYSTEM ALARM BELL - PROVIDE 120V, 1Ø, CIRCUIT FROM LIFE SAFETY PANEL. VERIFY EXACT LOCATION AND MOUNTING HEIGHT WITH FIRE PROTECTION AND ARCHITECTURAL ELEVATIONS. PROVIDE INTERFACE TO FIRE ALARM CONTROL PANEL.
 - CONCENTRATOR TO SERVE ROOMS 134, 135, 136, 137, 138, 164, 166, 167, 168, 169, 170, 174, 175, 181, 185, AND SECURITY DESK.
 - LOW VOLTAGE SHAFT FOR VERTICAL ROUTING OF MISCELLANEOUS LOW VOLTAGE SYSTEMS CABLING IN CONDUIT FROM MDF ROOM TO FIRST, SECOND FLOORS NORTH, SIXTH, SEVENTH, EIGHTH FLOORS NORTH AND SOUTH.
 - CONCENTRATOR TO SERVE ROOMS 139, 141, 142, 143, 144, 146, 147, 148, 150, 153, 154, 156, 157, 158, 159.
 - PARKING GARAGE ENTRY CONTROL PANEL. PROVIDE 120V/1Ø CIRCUIT FROM STANDBY POWER PANEL.
 - PROVIDE WALL MOUNTED BOXES FOR POWER AND DATA CONNECTIONS TO CASEWORK OR POWERED FURNITURE. INSTALL CONDUITS IN THE FLOOR SLAB TO THE NEAREST WALL AND STUD IN ACCESSIBLE CEILING SPACE. INSTALL BOXES AT 12' AFF. COORDINATE IN FIELD EXACT LOCATIONS OF BOXES AND WHIPS INTO FURNITURE OR CASEWORK WITH LAYOUT. PROVIDE SEPARATE JUNCTION BOXES FOR NORMAL POWER AND ISOLATED GROUND COMPUTER GRADE POWER.
 - SMOKE OR HEAT DETECTOR TO BE LOCATED IN EACH BEAM POCKET.
 - MOTORIZED PARKING GARAGE DOOR AND ELECTRICAL SENSORS FOR ACCESS CONTROL. INSTALL PER MANUFACTURER'S SPECIFICATIONS. CONNECT TO CONTROL PANEL LOCATED IN VAULT ROOM 158 FOR A RISK ANALYSIS AND OPERATIONAL REQUIREMENTS.
 - PROVIDE (1)1/2" COOLER AND FREEZER CONTROL PANELS FOR CONTROL WIRING. PROVIDE WIRING AND MAKE FINAL CONNECTIONS BETWEEN CONDENSING UNITS AND COOLER/FREEZER EVAPORATIVE UNITS PER MANUFACTURER INSTALLATION INSTRUCTIONS.
 - LOCATE DOOR POWER SUPPLY IN VESTIBULE 177 IN ACCESSIBLE LOCATION.
 - PROVIDE COMPLETE POWER AND DATA SYSTEMS WITHIN CASEWORK OR FURNITURE, INCLUDING POWER/DATA OUTLETS, BACKBOXES, CONDUIT, AND WIRING. MAKE ALL FINAL CONNECTIONS, ALL DEVICES TYPE, LOCATION, CONDUIT, AND ROUTING SHALL BE COORDINATED WITH RESPECTIVE SUPPLIER.

- KEYED NOTES**
- AUTOMATIC PLUMBING FIXTURES, INCLUDING FAUCET OR FLUSH VALVE. INSTALL AND WIRE 120V/240V TRANSFORMERS FURNISHED BY DIV. 15 CONTRACTOR AS PART OF PLUMBING FIXTURE PACKAGE. PROVIDE SAFETY DISCONNECT SWITCHES. INSTALL TRANSFORMERS IN AN ENCLOSED JUNCTION BOXES IN ACCESSIBLE LOCATION ABOVE THE CEILING ACCESS PANELS. VERIFY EXACT LOCATION IN FIELD. PROVIDE ALL NECESSARY CONDUIT AND WIRING FOR COMPLETE AND OPERATIONAL SYSTEM. COORDINATE ACCESS PANEL WITH ARCHITECT AND GENERAL CONTRACTOR.
 - IT SHAFT #1: LOCATION OF CONDUIT SLEEVES STUBS UP TO SECOND FLOOR IN LOW VOLTAGE SHAFT FOR ROUTING OF MISCELLANEOUS LOW VOLTAGE SYSTEMS CABLING IN CONDUIT TO THIRD FLOOR MDF ROOM.
 - ALL EXTERIOR RECEPTACLES SHALL BE GFI, WEATHERPROOF WHILE IN USE, WITH LOCKABLE COVER.
 - UPON ACTIVATION OF FIRE ALARM DOOR REMAINS LOCKED - 'FAIL - SECURE'.
 - PROVIDE (1) 1/2" LISTED 120V TO 240V AC CCTV POWER SUPPLY FOR UP TO 3 OUTDOOR FIXED CAMERAS AND (1) POWER SUPPLY FOR EACH PTZ OUTDOOR CAMERA. EACH POWER SUPPLY OUTPUT SHALL BE RATED FOR 3.5 AMPS MINIMUM. POWER SUPPLY SHALL BE AS MANUFACTURED BY ALTRONIX ALTV24 SERIES OR APPROVED EQUAL. DISTANCE FROM POWER SUPPLY TO CAMERA SHALL NOT EXCEED 75 FT. INSTALL IN FINISHED SPACES IN ACCESSIBLE LOCATION ABOVE CEILING. COORDINATE EXACT LOCATIONS IN FIELD WITH ARCHITECT. WHEN POWER SUPPLY IS LOCATED ABOVE PLENUM RATED CEILING, PROVIDE CEC COMPLIANT PLENUM RATED ENCLOSURE - TYPICAL FOR ALL OUTDOOR CAMERAS.
 - PROVIDE (2) JUNCTION BOXES AND 3/4" SLEEVES FOR POWER AND DATA CONNECTIONS TO CCTV CAMERAS FROM CCTV POWER SUPPLY (PS) AND CCTV REMOTE ENCLOSURE (CRE). REFER TO TYPICAL CCTV DETAILS DRAWING ES.07. WHEN CEILING DRYWALL SOFFIT DOES NOT ALLOW MOUNTING OF BOXES RIGHT AT THE PERIMETER - LOCATED THEM AWAY FROM EXTERIOR WALL IN ACCESSIBLE CEILING SPACE - TYPICAL FOR ALL OUTDOOR CAMERAS.
 - POWER SUPPLY BY DOOR HARDWARE MANUFACTURER. TYPICAL COORDINATE WITH DOOR HARDWARE SUPPLIER.
 - DOOR ENTRY IS ALLOWED BY PRESENTING VALID ACCESS CARD OR BY UNLOCKING FROM THE OFFICE AREA. REFER TO VIDEO-ENTRY SYSTEM RISER DIAGRAM COORDINATE INTERFACE REQUIREMENTS WITH DOOR HARDWARE SUPPLIER.

- KEYED NOTES**
- PROVIDE INTERFACE BETWEEN CARD READER AND DOOR OPERATOR TO UNLOCK AND OPEN THE DOORS WHEN VALID ACCESS CARD IS PRESENTED. BOTH EXTERIOR AND INTERIOR DOORS SHALL OPEN SIMULTANEOUSLY WITH TIME DELAY. REFER TO "DOOR HARDWARE" SPECIFICATION SECTION 08710. REFER TO TYPICAL DOOR DETAIL DRAWING ES.03, DETAIL 3 AND 4.
 - DOCK LEVELER AND VEHICLE RESTRAINT SYSTEM. PROVIDE POWER AND CONTROL WIRING AS REQUIRED BY MANUFACTURER'S INSTALLATION INSTRUCTIONS. MAKE ALL FINAL CONNECTIONS FOR COMPLETE AND OPERATIONAL SYSTEM.
 - FIRE ALARM RISERS.
 - (1)3" AND (1)1/4" CONDUITS FOR AT&T AND COMCAST SERVICES FROM BASEMENT LEVEL UP TO THIRD FLOOR MDF ROOM. PROVIDE PULL BOXES AS REQUIRED TO MAINTAIN MINIMUM CABLE BENDS AT (6) DIAMETERS, NOT FURTHER THAN EACH 100'.
 - ALL ELECTRICAL DEVICES, DISCONNECT SWITCHES, JUNCTION AND PULL BOXES LOCATED ABOVE THE SUSPENDED CEILING RESPECTIVE CONDUIT AND WIRING INSTALLATION SHALL COMPLY WITH CEC REQUIREMENTS FOR INSTALLATION IN AIR HANDLING SPACES. VERIFY EXACT EXTENT OF SUCH SPACES WITH DIV. 15 DRAWINGS.
 - PROVIDE (1)2" C. FROM MDF ROOM.
 - CIRCUIT SHALL EMANATE FROM PANEL RP-GP-1-1.
 - CAMERAS SHALL BE SURFACE MOUNTED TO THE UNDERSIDE OF CANOPY. REFER TO DETAIL 10 DRAWING ES.07.
 - CAMERA TO BE WALL MOUNTED AT ELEVATION 15 TO 20' AFG.
 - CAMERA TO BE SURFACE MOUNTED AT ROOF SPANDREL.
 - REMOTE LOW FUEL LEVEL ALARM PANEL. CONNECT TO FUEL TANK IN GENERATOR ROOM. PROVIDE 1" C. AND WIRING AS REQUIRED BY MANUFACTURER.
 - HEAT TRACE CONTROL PANEL AND CONNECTION - EQUIPMENT AND CABLE FURNISHED BY DIV. 15. PROVIDE ALL POWER, CONTROLS CONDUIT AND WIRING. INSTALL HEATING CABLES AND MAKES FINAL CONNECTIONS FOR COMPLETE AND OPERATIONAL SYSTEM. COORDINATE WITH DIV. 15 CONTRACTOR. PROVIDE INTERFACE TO BMS.

- KEYED NOTES**
- REMOTE DOOR SWITCH CONTROL PANEL. SWITCHES TO UNLOCK/LOCK DESIGNATED DOORS. ALL FUNCTIONS OF THIS SYSTEM SHALL BE OVERRIDDEN BY FIRE ALARM DOOR RELEASE SYSTEM OR BY MANUAL SWITCH FROM FIRE COMMAND CENTER.
 - LOCATE RECEPTACLES +24" AFF. RECYCLING ONLY.
 - LOCATE DOOR POWER SUPPLIES FOR VESTIBULE DOORS IN RECEPTION AREA ABOVE ACCESSIBLE CEILING. COORDINATE EXACT LOCATION AND CONDUIT ROUTING WITH ARCHITECT.
 - PROVIDE (1)1" C. FOR CONTROL WIRING FROM ACU-2-1 TO ACU-1-1 AND FROM ACU-2-1 TO ACU-1-2. REFER TO DRAWINGS E2.12A AND E7.01 FOR LOCATIONS.
 - FUEL FILL SPILL BOX CONTROLLER.
 - DOOR TO BE UNLOCKED FROM REMOTE LOCATION. REFER TO KEYED NOTE 34.
 - ZONE ABOVE ACCESSIBLE CEILING FOR POWER AND LOW VOLTAGE SYSTEMS PULL BOXES TO ENTER/EXIT IT SHAFT AND ELECTRICAL ROOM.
 - SHAFT FOR LOW VOLTAGE CONDUIT ROUTING TO 2ND FLOOR CEILING.
 - CIRCUIT SHALL EMANATE FROM PANEL RP-GP-2-1.
 - CIRCUIT SHALL EMANATE FROM PANEL RP-GP-2-2.
 - (1)1" C. DOWN BASEMENT LEVEL FOR INTERCOM AND FA SYSTEM INTERFACE TO EXISTING JONES HS.
 - (5) 2" C. FOR LOW VOLTAGE SYSTEMS FROM MDF ROOM 347 DOWN TO BASEMENT.



FOR REFERENCE ONLY

INFORMATION ONLY

NO.	ISSUE	DATE
9	BULLETIN NO. 52	04/17/13
8	BULLETIN NO. 1	09/14/11
7	ADDENDUM 3	06/22/11
6	ISSUED FOR PERMIT	05/25/11
5	ISSUED FOR GC BID	05/25/11
4	ISSUED FOR 90% CD	04/01/11
3	ISSUED FOR 60% CD	01/11/11
2	ISSUED FOR DESIGN DEVELOPMENT	10/28/10
1	ISSUED FOR SCHEMATIC DESIGN	08/24/10

Sheet Information	
Date	03/06/13
PBC Project	Wm Jones College Prep HS
PBC Contract No.	05285
Perkins+Will Job No.	022093.00
Drawn	DWM
Checked	DNT
Approved	RGL

Title
GROUND FLOOR POWER AND SYSTEMS PLAN AREA A

Sheet
E2.11A

Copyright © 2010 Perkins+Will



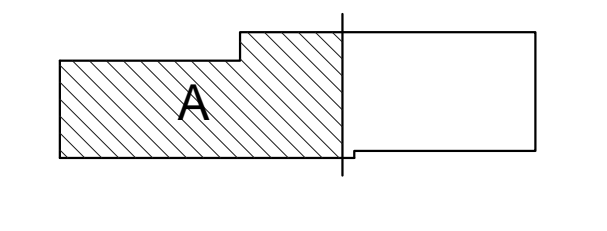
William Jones
College Preparatory High School
700 South State Street
Chicago, IL 60605

PERKINS + WILL

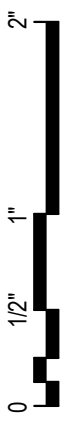
330 North Wabash Ave.
Suite 3900
Chicago, IL 60611
1312.765.0770
1312.758.0775
www.perkinswill.com

ASSOCIATE ARCHITECT
The Architects Enterprise, Ltd.
230 West Monroe St.
Suite 2205
Chicago, IL 60606
1312.424.0330
1312.424.0111
www.taefid.com

- STRUCTURAL ENGINEER
Halvorson and Partners
Chicago, IL
- STRUCTURAL ENGINEER
Drucker Zajdel Structural Engineers
Naperville, IL
- MECHANICAL ENGINEER
Primera Engineers
Chicago, IL
- CIVIL ENGINEER
Terra Engineering
Chicago, IL
- LANDSCAPE ARCHITECT
Site Design Group, Ltd.
Chicago, IL
- VERTICAL TRANSPORTATION CONSULTANT
Jenkins & Huntington, Inc.
Wilmette, IL
- FOOD SERVICE CONSULTANT
Cini-Little International, Inc.
Naperville, IL
- THEATER DESIGN CONSULTANT
Schuler Shook
Chicago, IL
- ACOUSTIC / AUDIO-VISUAL CONSULTANT
Talaske
Oak Park, IL
- NATATORUM CONSULTANT
Bill Robertson Pool Design/Build, Inc.
Northville, MI



Revisions



GENERAL NOTES

- ALL VISUAL FIRE ALARM DEVICES TO BE FURNISHED WITH FIELD ADJUSTABLE SETTINGS. INITIALLY SET AT VALUES AS INDICATED. ADJUST SETTINGS BASED ON FIELD TESTING AS REQUIRED.
- SMOKE DETECTORS FOR DOOR HOLDERS RELEASE SHALL BE INSTALLED WITHIN 5' FROM THE CENTERLINE OF THE DOOR OPENING.
- REFER TO EAX-XX SERIES DRAWINGS FOR LOCATIONS OF ALL AUDIO-VISUAL DEVICES. PROVIDE ALL CONDUIT AND BACKBOXES SHOWN ON THESE DRAWINGS.
- ALL POWER FOR AV EQUIPMENT SHALL BE ISOLATED GROUND, COMPUTER GRADE, WITH PERMANENT ENGRAVING ON THE COVER "AV ONLY". RECEPTACLES ARE DESIGNATED ON FLOOR PLAN WITH SUBSCRIPT "AV".
- ALL CIRCUITS INDICATED AS "AVXX" EMANATE FROM PANEL "RP-AV-2-1". REFER TO DRAWINGS E2.108 FOR PANEL LOCATION. SEE NOTE 4 FOR IDENTIFICATION REQUIREMENTS.
- ALL CIRCUITS INDICATED AS "E1-XX" EMANATE FROM EMERGENCY POWER PANEL "E-LP-AD-1-1", U.N.O.
- ALL GENERAL POWER CIRCUITS ON THIS DRAWING EMANATE FROM PANEL "RP-GP-1-3", UNLESS NOTED OTHERWISE. CIRCUIT NUMBERS ARE DESIGNATED WITH NO ALPHABETICAL PREFIX.
- ALL ISOLATED GROUND COMPUTER GRADE CIRCUITS INDICATED ON DRAWING AS "CXX" EMANATE FROM PANEL "RP-CP-1-2".
- ALL 480V/3Ø AND 277V/1Ø MECHANICAL EQUIPMENT CIRCUITS DENOTED "M1-XX" EMANATE FROM PANEL "PPH-M1-1-1", U.N.O.
- REFER TO ENLARGED PARTIAL PLANS DRAWING E7.00 FOR ELECTRICAL ROOM LAYOUT AND PANELS LOCATIONS.
- ALL CIRCUITS INDICATED AS "E2-XX" EMANATE FROM PANEL "E-LP-1-2", U.N.O.
- ALL EXTERIOR CCTV CAMERAS SHALL BE SURFACE MOUNTED UNDER THE CANOPY OR ARM MOUNTED AT 15' MINIMUM ABOVE FINISHED GRADE WHEN NO CANOPY EXISTS. AT 15' MINIMUM EXACT MOUNTING HEIGHT WITH ARCHITECTURAL ELEVATIONS. REFER TO TYPICAL CCTV DETAILS.
- ALL INTERIOR CCTV CAMERAS SHALL BE CEILING MOUNTED WHERE POSSIBLE. REFER TO TYPICAL CCTV DETAILS, DRAWING E5.07.

GENERAL NOTES

- DIV. 16 CONTRACTOR SHALL PROVIDE STEP DOWN TRANSFORMER 120V-240V FOR DOOR HARDWARE WHEN NOT FURNISHED BY DOOR HARDWARE MANUFACTURER. PROVIDE TRANSFORMER IN ENCLOSURE WITH REMOVABLE COVER AND SAFETY DISCONNECT SWITCH. INSTALL TRANSFORMER IN ACCESSIBLE LOCATION ABOVE THE CEILING. WHEN TRANSFORMER IS INSTALLED IN PLENUM RATED CEILING - PROVIDE CEC COMPLIANT PLENUM RATED ENCLOSURE.
- LOCATE INTERCOM PAGING SPEAKERS IN STAIRWELLS ON EVERY LANDING.

KEYED NOTES

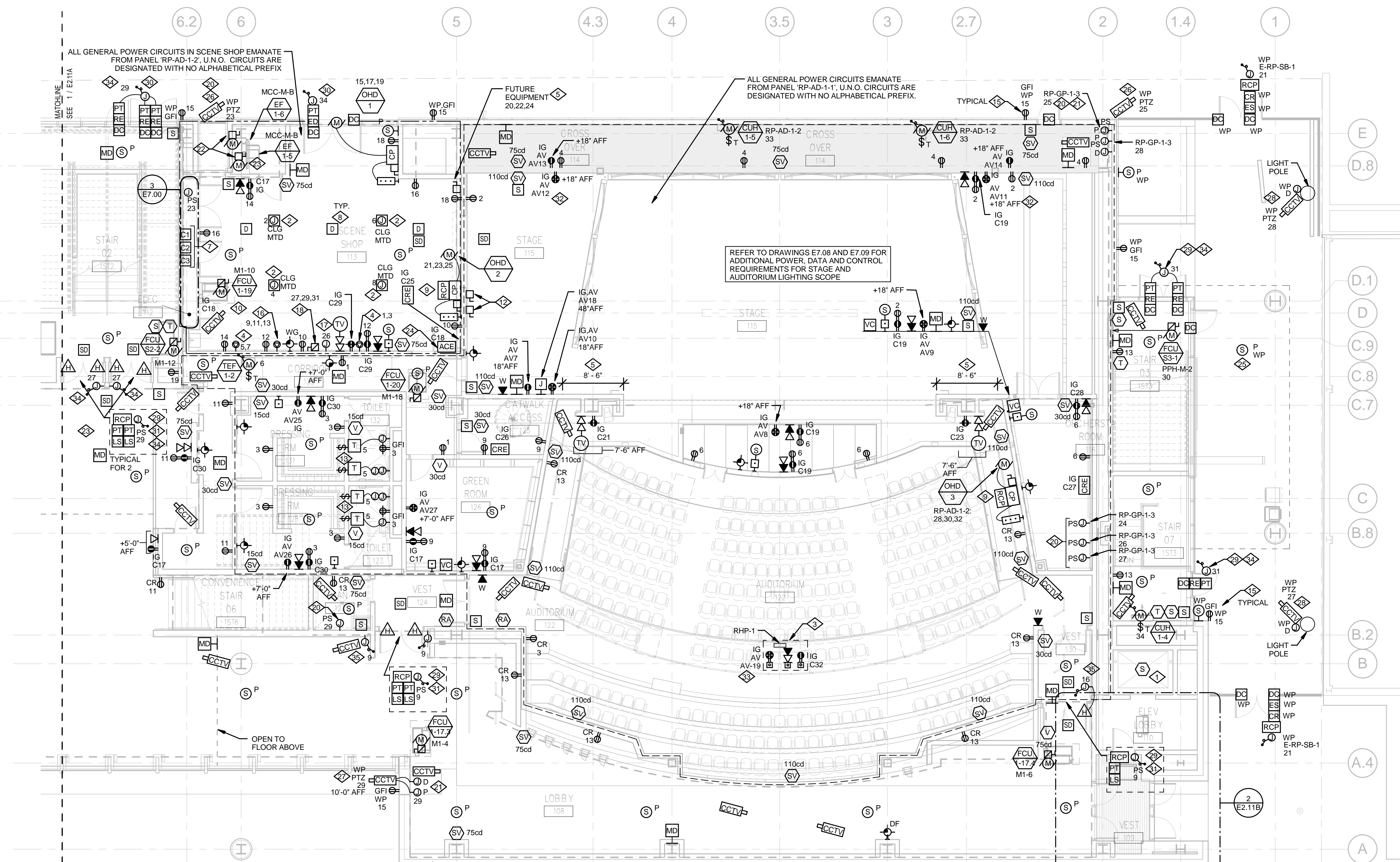
- SPEAKER TO BE INSTALLED IN ELEVATOR CAB.
- REEL CORD CEILING MOUNTED WITH NEMA 5-15R TWIST LOCK RECEPTACLE.
- PROVIDE IG/AV GRADE RECEPTACLE AND DATA OUTLETS. CIRCUIT NUMBER AS INDICATED. COORDINATE EXACT LOCATION WITH THEATER CONSULTANT DRAWINGS. OUTLETS TO BE LOCATED IN FLOOR POCKET NEXT TO POWER AND CONTROL CONNECTIONS FOR REHEARSAL PANEL "RHP-1".
- 30A, 208V, 1Ø, 3W TWIST LOCK OUTLET FOR SHOP EQUIPMENT. INSTALL 36" AFF. PROVIDE IDENTIFICATION LABEL, "FUTURE".
- 100A, 208V, 1Ø, 4W SAFETY DISCONNECT SWITCH IN NEMA 12 ENCLOSURE FOR FUTURE SHOP EQUIPMENT.
- SPRINKLER SYSTEM BELL. VERIFY EXACT LOCATION AND MOUNTING HEIGHT WITH FIRE PROTECTION DRAWINGS AND ARCHITECTURAL ELEVATIONS. PROVIDE 120V, 1Ø POWER FROM LIFE SAFETY PANEL. PROVIDE INTERFACE TO FIRE ALARM CONTROL PANEL AND ANNUNCIATOR.
- PROVIDE CONTACTORS TO CONTROL LIGHTING CIRCUITS FOR SX-1 TAGGED FIXTURES IN SCENE SHOP AND RECEPTACLE CIRCUITS IN RACEWAY ABOVE THE COUNTER IN GREEN ROOM. REFER TO DETAIL 8 DRAWING E5.09 AND DRAWINGS E7.07 AND E7.09.
- HEAT DETECTORS TO BE LOCATED IN EVERY BEAM POCKET.
- FIRE RATED DOOR. PROVIDE INTERFACE TO FIRE ALARM SYSTEM TO CLOSE THE DOOR IN CASE OF FIRE. SMOKE DETECTORS TO BE LOCATED WITHIN 5' FROM THE CENTERLINE OF DOOR OPENING.
- DOOR ENTRY IS ALLOWED BY PRESENTING VALID ACCESS CARD OR BY UNLOCKING FROM THE OFFICE AREA. REFER TO VIDEO-ENTRY SYSTEM RISER DIAGRAM. COORDINATE INTERFACE REQUIREMENTS WITH DOOR HARDWARE SUPPLIER.
- PROVIDE INTERFACE BETWEEN CARD READER AND DOOR LOCK TO UNLOCK DOORS WHEN VALID ACCESS CARD IS PRESENTED. REFER TO "DOOR HARDWARE" SPECIFICATION SECTION 08710.
- 100A, 208/120V, 3Ø, 5W AUDIO/VIDEO COMPANY SWITCH AND 400A, 208/120V, 3Ø, 5W STAGE LIGHTING COMPANY SWITCH. REFER TO RISER DIAGRAM DRAWING E4.00 FOR SPECIFICATION. COORDINATE EXACT LOCATION PER DRAWING E7.09.

KEYED NOTES

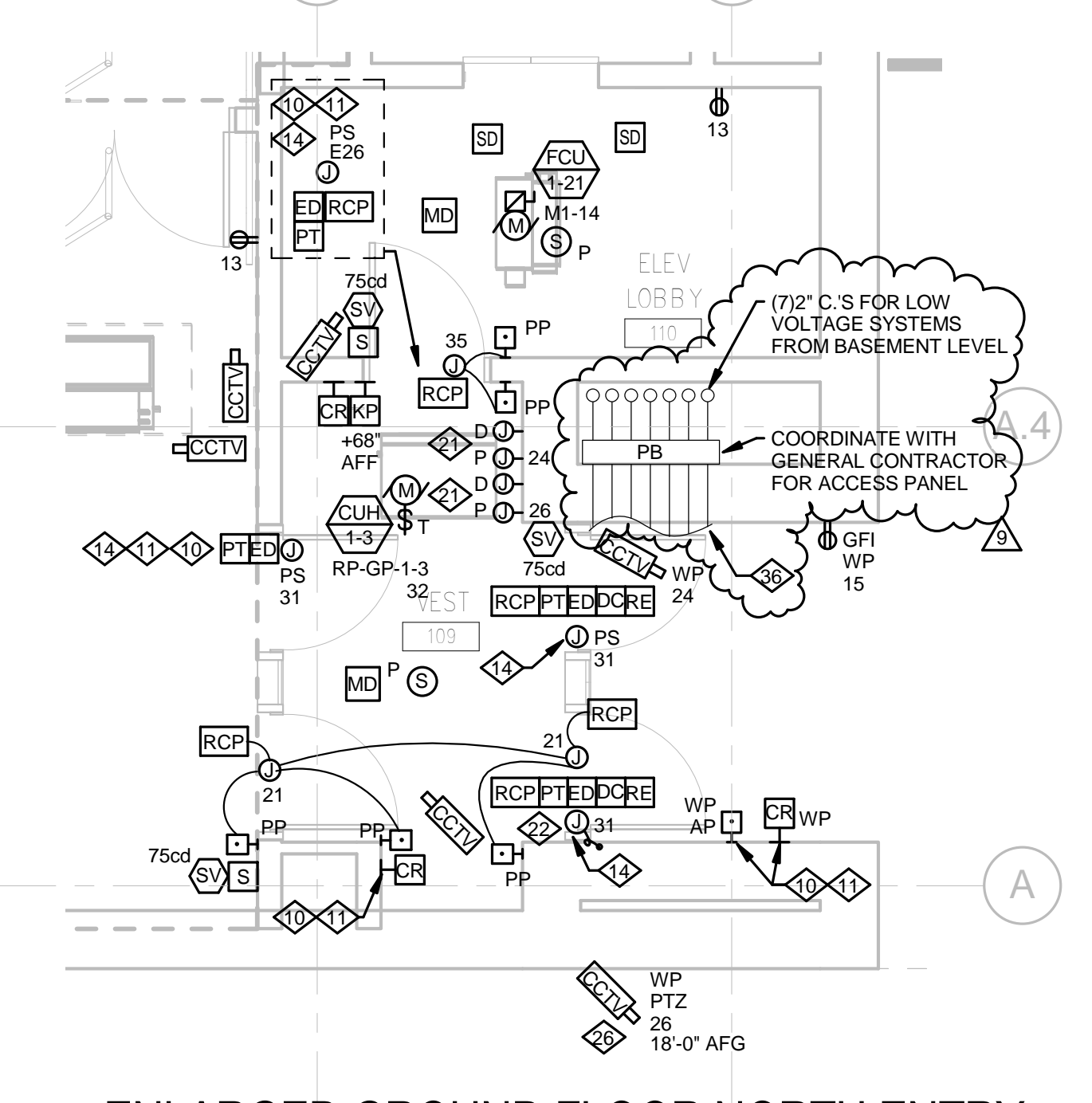
- AUTOMATIC PLUMBING FIXTURES, INCLUDING FAUCET OR FLUSH VALVE: INSTALL AND WIRE 120/24V TRANSFORMERS FURNISHED BY DIV. 15 CONTRACTOR AS PART OF PLUMBING FIXTURE PACKAGE. PROVIDE SAFETY DISCONNECT SWITCHES. INSTALL IN ACCESSIBLE LOCATION ABOVE JUNCTION BOXES IN ACCESSIBLE LOCATION ABOVE THE CEILING ACCESS PANELS. VERIFY EXACT LOCATION IN FIELD. PROVIDE ALL NECESSARY CONDUIT AND WIRING FOR COMPLETE AND OPERATIONAL SYSTEM. COORDINATE ACCESS PANEL WITH ARCHITECT AND GENERAL CONTRACTOR.
- POWER SUPPLY BY DOOR HARDWARE MANUFACTURER - TYPICAL. COORDINATE WITH DOOR HARDWARE SUPPLIER.
- ALL EXTERIOR RECEPTACLE SHALL BE GFI, WITH WEATHERPROOF, WHILE IN USE. PROVIDE LOCKABLE COVER.
- 30A, 208V, 3Ø, 4W TWIST LOCK OUTLET FOR SHOP EQUIPMENT. INSTALL 36" AFF.
- PROVIDE POWER CONNECTION FOR FUTURE EQUIPMENT JUNCTION BOX TO BE MOUNTED 80" AFF. TERMINATE CONDUCTORS IN 200/1P SAFETY DISCONNECT SWITCH IN NEMA 12 ENCLOSURE. PROVIDE BLANK COVER WITH IDENTIFICATION LABEL "VENT HOOD".
- PROVIDE 30AS/20AF/3Ø DISCONNECT SWITCH IN NEMA 12 ENCLOSURE FOR FUTURE DUST COLLECTION EQUIPMENT. PROVIDE IDENTIFICATION LABEL "DUST COLLECTION SYSTEM".
- NOT USED.
- PROVIDE (1) UL LISTED, "120V TO 24V AC" CCTV POWER SUPPLY FOR UP TO 4 OUTDOOR FIXED CAMERAS AND (1) POWER SUPPLY FOR EACH PTZ OUTDOOR CAMERA. EACH POWER SUPPLY OUTPUT SHALL BE RATED FOR 3.5 AMP MINIMUM. POWER SUPPLY SHALL BE AS MANUFACTURED BY ALTRONIX ALTYA SERIES OR APPROVED EQUAL. DISTANCE FROM POWER SUPPLY TO CAMERA SHALL NOT EXCEED 75 FT IN FINISHED SPACES. INSTALL IN ACCESSIBLE LOCATION ABOVE CEILING. COORDINATE EXACT LOCATIONS IN FIELD WITH ARCHITECT. WHEN POWER SUPPLY IS LOCATED ABOVE PLENUM RATED CEILING, PROVIDE CEC COMPLIANT PLENUM RATED ENCLOSURE. FROM EXTERIOR WALL IN ACCESSIBLE CEILING SPACE.
- PROVIDE (2) JUNCTION BOXES AND 3/4" SLEEVES FOR POWER AND DATA CONNECTIONS TO CCTV CAMERAS FROM CCTV POWER SUPPLY (PS) AND CCTV REMOTE ENCLOSURE (CRE). REFER TO TYPICAL CCTV DETAILS, DRAWING E5.07. WHEN CEILING DRYWALL SOFFIT DOES NOT ALLOW MOUNTING OF BOXES RIGHT AT THE PERIMETER, LOCATED THEM AWAY FROM EXTERIOR WALL IN ACCESSIBLE CEILING SPACE.
- INSTALL SAFETY DISCONNECT SWITCHES IN ACCESSIBLE LOCATION IN DIRECT VIEW OF FAN MOTORS. PROVIDE PLENUM RATED ENCLOSURES. REFER TO DRAWING E7.00 FOR STARTER'S LOCATIONS.
- ALL ELECTRICAL DEVICES, DISCONNECT SWITCHES, JUNCTION AND PULL BOXES LOCATED ABOVE THE SUSPENDED CEILING RESPECTIVE CONDUIT AND WIRING INSTALLATION SHALL COMPLY WITH CEC REQUIREMENTS FOR INSTALLATION IN AIR HANDLING SPACES. VERIFY EXACT EXTENT OF SUCH SPACES WITH DIV. 15 DRAWINGS.

KEYED NOTES

- ADMINISTRATIVE CONCENTRATOR (ACE) TO SERVE ROOMS 100, 107, 113, 115, 116, 122, 126, 128, 131, AND ORCHESTRA PIT.
- RECESSED WEATHERPROOF SPEAKER MOUNTED UNDERSIDE OF CANOPY.
- CAMERA TO BE WALL MOUNTED AT ELEVATION 15'-20" AFG, U.N.O.
- CAMERA TO BE SURFACE MOUNTED TO THE UNDERSIDE OF THE CANOPY. REFER TO DETAIL 10, DRAWING E5.07.
- CAMERA TO BE MOUNTED ON LIGHTING POLE AT 15' AFG. PROVIDE (2) 1" C. POWER AND DATA CONNECTIONS. POWER FEED SHALL NOT EXCEED 75' TOTAL ROUTING LENGTH. REFER TO DRAWING E5.10 FOR POLE LOCATION AND CONDUIT ROUTING.
- LOCATE DOOR POWER SUPPLY IN ORCHESTRA ROOM 116 IN ACCESSIBLE LOCATION.
- LOCATE DOOR POWER SUPPLY IN SCENE SHOP ROOM 113 IN ACCESSIBLE LOCATION.
- DOOR TO BE UNLOCKED FROM REMOTE LOCATION. REFER TO DRAWING E2.11A, KEYED NOTE 34.
- COORDINATE LOCATION OF DEVICES WITH ORCHESTRA SHELL.
- DELIVER TO AV DEVICE - SEE DRAWING E4.11B.
- CIRCUIT SHALL EMANATE FROM PANEL "RP-GP-2-2".
- CIRCUIT #9 EMANATE FROM PANEL "RP-GP-1-3".
- (7) 2" C.S. FOR LOW VOLTAGE SYSTEMS FROM BASEMENT LEVEL. STUB CONDUITS 1' FROM BUILDING TO UNDER THE CANOPY. PROVIDE WATERPROOFING AS REQUIRED. COORDINATE WITH ARCHITECT. WIRING WILL BE PULLED BY OTHERS. THIS CONTRACTOR TO MAKE FINAL CONNECTIONS.



Proposed New Jones HS NIC



1 GROUND FLOOR POWER AND SYSTEMS PLAN - AREA B
1/8" = 1'-0"

2 ENLARGED GROUND FLOOR NORTH ENTRY
1/4" = 1'-0"



William Jones
College Preparatory High School
700 South State Street
Chicago, IL 60605

PERKINS + WILL
330 North Wabash Ave.
Suite 3900
Chicago, IL 60611
1312.765.0770
1312.758.0775
www.perkinswill.com

ASSOCIATE ARCHITECT
The Architects Enterprise, Ltd.
230 West Monroe St.
Suite 2205
Chicago, IL 60606
1312.424.0330
1312.424.0311
www.taed.com

- STRUCTURAL ENGINEER
Halvorson and Partners
Chicago, IL
- STRUCTURAL ENGINEER
Drucker Zajdel Structural Engineers
Naperville, IL
- MECHANICAL ENGINEER
Primera Engineers
Chicago, IL
- CIVIL ENGINEER
Terra Engineering
Chicago, IL
- LANDSCAPE ARCHITECT
Site Design Group, Ltd.
Chicago, IL
- VERTICAL TRANSPORTATION CONSULTANT
Jenkins & Huntington, Inc.
Wilmette, IL
- FOOD SERVICE CONSULTANT
Cini-Little International, Inc.
Naperville, IL
- THEATER DESIGN CONSULTANT
Schuler Shook
Chicago, IL
- ACOUSTIC / AUDIO-VISUAL CONSULTANT
Talske
Oak Park, IL
- NATATORIUM CONSULTANT
Bill Robertson Pool Design/Build, Inc.
Northville, MI

FOR REFERENCE ONLY

INFORMATION ONLY

NO.	ISSUE	DATE
9	BULLETIN NO 52	04/17/13
8	BULLETIN NO. 1	09/14/11
7	ADDENDUM 3	06/22/11
6	ISSUED FOR PERMIT	05/25/11
5	ISSUED FOR GC BID	05/25/11
4	ISSUED FOR 90% CD	04/01/11
3	ISSUED FOR 60% CD	01/11/11
2	ISSUED FOR DESIGN DEVELOPMENT	10/28/10
1	ISSUED FOR SCHEMATIC DESIGN	08/24/10

Sheet Information	
Date	03/06/13
PBC Project	Wm Jones College Prep HS
PBC Contract No.	05285
Perkins+Will Job No.	022093.00
Drawn	DWM
Checked	DNT
Approved	RGL
Title GROUND FLOOR POWER AND SYSTEMS PLAN AREA B	

Sheet
E2.11B

Proposed New Jones HS NIC

GENERAL NOTES

- ALL VISUAL FIRE ALARM DEVICES TO BE FURNISHED WITH FIELD ADJUSTABLE SETTINGS, INITIALLY SET AT VALUES AS INDICATED. ADJUST SETTINGS BASED ON FIELD TESTING AS REQUIRED.
- SMOKE DETECTORS FOR DOOR HOLDERS RELEASE SHALL BE INSTALLED WITHIN 5' FROM THE CENTERLINE OF THE DOOR OPENING.
- ALL GENERAL POWER CIRCUITS ON THIS DRAWING DESIGNATED WITH NO ALPHABETICAL PREFIX, EMANATE FROM PANEL 'RP-GP-3-1' OR 'RP-GP-3-2' AS INDICATED BY DEMARCATION LINES.
- ALL COMPUTER CIRCUITS DENOTED 'CXX' EMANATE FROM PANELS 'RP-CP-3-2' OR 'RP-CP-3-1' AS INDICATED ON DRAWING BY DEMARCATION LINES.
- ALL EMERGENCY POWER DENOTED AS 'EXX' EMANATE FROM PANEL 'E-LP-3'.
- ALL EXTERIOR CCTV CAMERAS SHALL BE SURFACE MOUNTED UNDER THE CANOPY. REFER TO TYPICAL CCTV DETAILS.
- ALL INTERIOR CCTV CAMERAS SHALL BE CEILING MOUNTED WHERE POSSIBLE. REFER TO TYPICAL CCTV DETAILS, DRAWING E5.07.
- SEE ENLARGED ELECTRICAL PLANS SHEET E7.01 FOR ELECTRICAL EQUIPMENT (PANELBOARDS, DISTRIBUTION BOARDS, TRANSFORMERS, ETC.) LOCATED IN ELECTRICAL ROOMS.
- DIV. 16 CONTRACTOR SHALL PROVIDE STEP-DOWN TRANSFORMER 120V-240V FOR DOOR HARDWARE WHEN NOT FURNISHED BY DOOR HARDWARE MANUFACTURER. PROVIDE TRANSFORMER IN ENCLOSURE WITH REMOVABLE COVER AND SAFETY DISCONNECT SWITCH. INSTALL TRANSFORMER IN ACCESSIBLE LOCATION ABOVE THE CEILING, WHEN TRANSFORMER IS INSTALLED IN PLENUM RATED CEILING - PROVIDE CEC COMPLIANT PLENUM RATED ENCLOSURE.
- ALL CCTV CAMERAS LOCATED IN LIBRARY/MEDIA CENTER ARE CONNECTED DIRECTLY TO DVS RACKS IN MDF ROOM. NO CRE REQUIRED.
- ALL 480V OR 277V CIRCUITS DESIGNATED WITH CIRCUIT NUMBER 'XXX' EMANATE FROM PANEL 'M-3'.
- LOCATE INTERCOM PAGING SPEAKERS IN STAIRWELLS ON EVERY LANDING.
- REFER TO EA-XXX SERIES DRAWINGS FOR EXACT LOCATIONS OF AV DEVICES. PROVIDE ALL CONDUIT AND BACKBOXES AS SHOWN ON THESE DRAWINGS.

KEYED NOTES

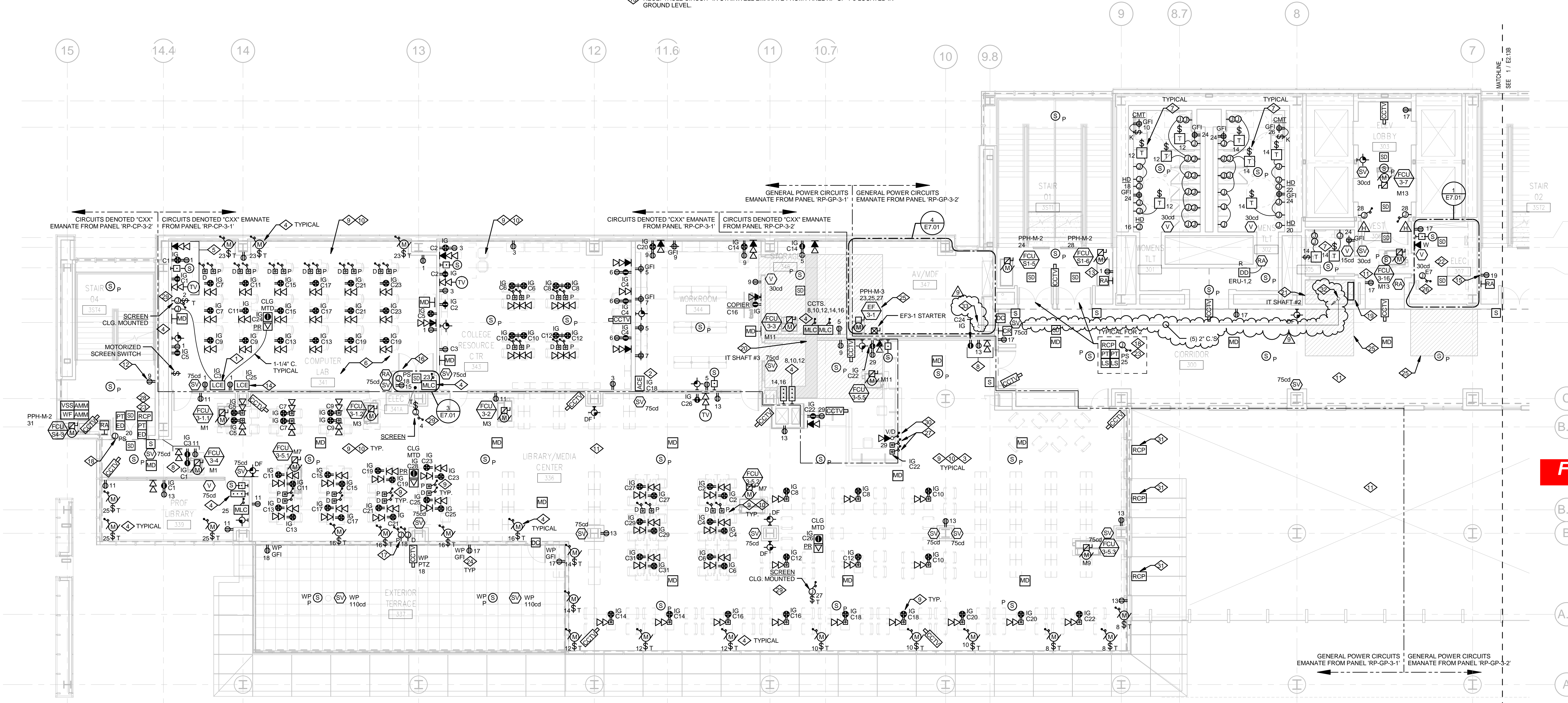
- IT CONCENTRATOR TO SERVE ROOM 341.
- IT CONCENTRATOR TO SERVE ROOMS 343, 344, 346 AND CIRCULATION DESK.
- CABLING FOR ALL VOICEDATA OUTLETS IN ROOM 336 (NORTH) TO BE ROUTED TO MDF DIRECTLY. NO CONCENTRATOR REQUIRED.
- MLC - MOTORIZED SHADES CONTROLLER. PROVIDE (1) 120V, 1 PHASE CIRCUIT. CONNECT TO PUSHBUTTON SWITCHES LOCATED BEHIND LIBRARIAN DESK IN MEDIA CENTER OR FOR OTHER ROOM LOCATIONS AS INDICATED ON FLOOR PLAN.
- INSTRUCTORS STATION POWER AND DATA DEVICE TO BE MOUNTED APPROXIMATELY 5'-0" FROM WALL. REFER TO DETAIL 'I' ON SHEET E5.03 FOR EXACT LOCATION. TYPICAL OF ALL CLASSROOMS, WORLD LANGUAGE AND ART CLASSROOMS.
- REFER TO DETAIL 1 AND 2 ON SHEET E5.03 FOR ELEVATIONS OF TYPICAL FRONT AND REAR WALL DEVICE LOCATIONS FOR ALL CLASSROOMS AND COMPUTER/WORLD LANGUAGE LABS.
- AUTOMATIC PLUMBING FIXTURES, INCLUDING FAUCET OR FLUSH VALVE: INSTALL AND WIRE 120/24V TRANSFORMERS FURNISHED BY DIV. 15 CONTRACTOR AS PART OF PLUMBING FIXTURE PACKAGE. PROVIDE SAFETY DISCONNECT SWITCHES. INSTALL TRANSFORMERS IN AN ENCLOSED JUNCTION BOXES IN ACCESSIBLE LOCATION ABOVE THE CEILING ACCESS PANELS. VERIFY EXACT LOCATION IN FIELD. PROVIDE ALL NECESSARY CONDUIT AND WIRING FOR COMPLETE AND OPERATIONAL SYSTEM. COORDINATE ACCESS PANEL WITH ARCHITECT AND GENERAL CONTRACTOR.
- BOOK DETECTION SYSTEM CONNECTION.
- PROVIDE FLUSH WITH FINISHED FLOOR BOXES FOR POWER AND DATA CONNECTIONS TO POWERED FURNITURE. INSTALL CONDUITS IN THE FLOOR SLAB TO THE NEAREST WALL AND STUB IN ACCESSIBLE CEILING SPACE. COORDINATE EXACT LOCATIONS OF THE BOXES WITH FURNITURE LAYOUT. WHEN FURNITURE IS LOCATED ADJACENT TO THE WALL, WALL MOUNTED BOXES LOCATED 12" AFF WITH WHP INHIBITED THE FURNITURE SHALL BE PROVIDED. PROVIDE SEPARATE COMPARTMENTS FOR DATA, NORMAL POWER, AND ISOLATED GROUND POWER.
- PROVIDE COMPLETE POWER AND DATA SYSTEMS WITHIN FURNITURE - INCLUDING POWER/DATA OUTLETS, BACKBOXES, CONDUIT, AND WIRING. MAKE ALL FINAL CONNECTIONS ALL DEVICES TYPE, LOCATION, CONDUIT, AND ROUTING SHALL BE COORDINATED WITH FURNITURE SUPPLIER.
- ALL ELECTRICAL DEVICES, DISCONNECT SWITCHES, JUNCTION AND PULL BOXES LOCATED ABOVE THE CEILING, RESPECTIVE CONDUIT AND WIRING INSTALLATION SHALL COMPLY WITH CEC REQUIREMENTS FOR INSTALLATION IN AIR HANDLING PLENUM SPACES. VERIFY EXACT EXTENT OF SUCH SPACES WITH DIVISION 15 DRAWINGS AND CONTRACTOR.
- RECEPTACLE CIRCUIT IN STAIRWELL EMANATE FROM PANEL RP-GP-4-3 LOCATED ON 4TH FLOOR.
- RECEPTACLE CIRCUIT IN STAIRWELL EMANATE FROM PANEL RP-GP-1-2 LOCATED IN GROUND LEVEL.
- IT CONCENTRATOR TO SERVE ROOMS 336 (SOUTH) AND 339.
- RECEPTACLE CIRCUIT IN STAIRWELL EMANATE FROM PANEL RP-GP-1-3 LOCATED IN GROUND LEVEL.

KEYED NOTES

- PROVIDE (1) UL LISTED 120V TO 24V AC CCTV POWER SUPPLY FOR UP TO 3 OUTDOOR FIXED CAMERAS AND (1) POWER SUPPLY FOR EACH PTZ OUTDOOR CAMERA. EACH OUTPUT SHALL BE RATED FOR 3.5 AMPS. POWER SUPPLY SHALL BE AS MANUFACTURED BY ALTRONIX ALTV24 SERIES OR APPROVED EQUAL. DISTANCE FROM POWER SUPPLY TO CAMERA SHALL NOT EXCEED 75 FT. COORDINATE EXACT LOCATIONS IN FIELD WITH ARCHITECT. WHEN POWER SUPPLY IS LOCATED ABOVE PLENUM RATED CEILING, PROVIDE CEC COMPLIANT PLENUM RATED ENCLOSURE.
- PROVIDE (2) JUNCTION BOXES AND 3/4" SLEEVES FOR POWER AND DATA CONNECTIONS TO CCTV CAMERAS FROM CCTV POWER SUPPLY (PS) AND CCTV REMOTE ENCLOSURE (CRE). REFER TO TYPICAL CCTV DETAILS, DRAWING E5.07. WHEN CEILING DRYWALL SOFFIT DOES NOT ALLOW MOUNTING OF BOXES RIGHT AT THE PERIMETER - LOCATED THEM AWAY FROM EXTERIOR WALL IN ACCESSIBLE CEILING SPACE.
- POWER SUPPLY BY DOOR HARDWARE MANUFACTURER - TYPICAL. COORDINATE WITH DOOR HARDWARE SUPPLIER.
- FIRE ALARM RETURN RISERS.
- LOW VOLTAGE SHAFT UP TO FOURTH AND FIFTH FLOOR FOR CONDUIT ROUTING TO SERVE FOURTH AND FIFTH SOUTH MISCELLANEOUS LOW VOLTAGE SYSTEMS.
- LOW VOLTAGE SHAFT FOR VERTICAL ROUTING OF MISCELLANEOUS LOW VOLTAGE SYSTEMS CABLING IN CONDUIT FROM MDF ROOM TO 1, 2 FLOORS NORTH, AND 6, 7, 8 FLOORS NORTH AND SOUTH.
- SMOKE DETECTORS TO BE LOCATED IN EVERY BEAM POCKET.
- DOOR TO BE UNLOCKED FROM REMOTE LOCATION. REFER TO DRAWING E2.11A, KEYED NOTE 34.
- RECEPTACLES TO BE MOUNTED HORIZONTALLY IN CURB.
- ZONE ABOVE ACCESSIBLE CEILING FOR POWER AND LOW VOLTAGE SYSTEMS PULL BOXES TO ENTER/EXIT IT SHAFT AND ELECTRICAL ROOM.
- 120V 1 PHASE CONNECTION TO FIRE ALARM POWER SUPPLY.
- TWO COMPARTMENT BOX: PROVIDE AT LOCATION OF EXISTING STUB UPS FLUSH WITH FLOOR BOX WITH REGULAR, AND ISOLATED GROUND (IG) POWER OUTLETS FOR LIBRARY DESK EQUIPMENT. COORDINATE COVER TRIMFINISH WITH ARCHITECTURAL FLOOR FINISHES IN THIS AREA.
- CIRCUIT SHALL EMANATE FROM PANEL RP-GP-2-1.
- MOTORIZED PROJECTION SCREEN AND CONTROL SWITCH. PROVIDE CONDUIT AND WIRING BETWEEN SCREEN CONTROLLER AND CONTROL SYSTEMS AS REQUIRED BY MANUFACTURER FOR COMPLETE AND OPERATIONAL SYSTEM. REFER TO EA-XX SERIES DRAWINGS. PROVIDE CONDUIT SIZE AS INDICATED. FOR CABLING TO AN EQUIPMENT RACK. PROVIDE ISOLATION BUSHINGS FOR CONDUIT ENTERING TO THE RACK.
- FIRE-RATED POKE DEVICE WITH VOICEDATA OUTLETS FOR LIBRARY DESK EQUIPMENT. COORDINATE COVER TRIMFINISH WITH ARCHITECTURAL FLOOR FINISHES IN THIS AREA. INSTALL 1" C. VOICEDATA CONDUIT IN CEILING SPACE BELOW. COORDINATE LOCATION OF THE FLOOR PENETRATION WITH STRUCTURAL ENGINEER.

KEYED NOTES

- PROVIDE ADDRESSABLE RELAY MODULE WITHIN 3' FROM SHUTTER CONTROLLER. PROVIDE INTERFACE TO BUILDING FIRE ALARM CONTROL PANEL TO RELEASE SHUTTERS IN CASE OF FIRE ALARM. UPDATE HARDWARE, SOFTWARE, AND ANNUNCIATOR AS REQUIRED.
- 2" C.S. FOR LOW VOLTAGE SYSTEMS. INTERFACE WITH EXISTING JONES HIGH SCHOOL DOWN TO BASEMENT. UTILIZE EXISTING SHAFT.
- MDF ROOM - HEADEND FOR IT SECURITY, CCTV, TV.



FOR REFERENCE ONLY

INFORMATION ONLY

NO	ISSUE	DATE
9	BULLETIN NO 52	04/17/13
8	BULLETIN NO. 1	09/14/11
7	ADDENDUM 3	06/22/11
6	ISSUED FOR PERMIT	05/25/11
5	ISSUED FOR GC BID	05/25/11
4	ISSUED FOR 90% CD	04/01/11
3	ISSUED FOR 60% CD	01/11/11
2	ISSUED FOR DESIGN DEVELOPMENT	10/28/10
1	ISSUED FOR SCHEMATIC DESIGN	08/24/10

Sheet Information	
Date	03/06/13
PBC Project	Wm Jones College Prep HS
PBC Contract No.	05285
Perkins+Will Job No.	022093.00
Drawn	DWM
Checked	DNT
Approved	RGL

Title
THIRD FLOOR
POWER AND
SYSTEMS PLAN
AREA A

Sheet
E2.13A

Copyright © 2010 Perkins+Will

OF CHICAGO
BUILDING SCHOOLS
ACROSS CHICAGO
 ARCHITECTURAL CONSULTANTS
 CPS

William Jones
College Preparatory
High School
 700 South State Street
 Chicago, IL 60605

ARCHITECT
PERKINS
+ WILL
 330 North Wabash Ave.
 Suite 3900
 Chicago, IL 60611
 1312.765.0770
 1312.758.0775
 www.perkinswill.com

ASSOCIATE ARCHITECT
The Architects Enterprise, Ltd.
 230 West Monroe St.
 Suite 2205
 Chicago, IL 60606
 1312.424.0330
 1312.424.0111
 www.taedf.com

STRUCTURAL ENGINEER
 Halvorson and Partners
 Chicago, IL

STRUCTURAL ENGINEER
 Drucker Zajdel Structural Engineers
 Naperville, IL

MECHANICAL ENGINEER
 Primera Engineers
 Chicago, IL

CIVIL ENGINEER
 Terra Engineering
 Chicago, IL

LANDSCAPE ARCHITECT
 Site Design Group, Ltd.
 Chicago, IL

VERTICAL TRANSPORTATION CONSULTANT
 Jenkins & Huntington, Inc.
 Willowbrook, IL

FOOD SERVICE CONSULTANT
 Cini-Little International, Inc.
 Naperville, IL

THEATER DESIGN CONSULTANT
 Schuler Shook
 Chicago, IL

ACOUSTIC / AUDIO-VISUAL CONSULTANT
 Talaske
 Oak Park, IL

NATATORIUM CONSULTANT
 Bill Robertson Pool Design/Built, Inc.
 Northville, MI