

ADDENDUM



Public Building Commission of Chicago • Richard J. Daley Center • 50 West Washington, Room 200 • Chicago, Illinois 60602 • Tel: 312-744-3090 • Fax: 312-744-8005

ADDENDUM NO.: 03
PROJECT NAME: Minnie Mars Jamieson Elementary School Annex and Renovation
PROJECT NO.: 05760
CONTRACT NO.: C1567
DATE OF ISSUE: May 20, 2015

NOTICE OF CHANGES, MODIFICATIONS, OR CLARIFICATIONS TO CONTRACT DOCUMENTS

The following changes, modifications, or clarifications are hereby incorporated and made an integral part of the Contract Documents. Unless clearly expressed otherwise by this Addendum, all terms and conditions defined in the original Contract Documents shall continue in full force and effect and shall have the same meaning in this Addendum.

- ITEM NO. 1: CHANGE TO BID OPENING DATE AND TIME**
Change 1. The Bid Opening Due Date and Time has been extended from Thursday, May 21, 2015 to Thursday, May 28, 2015 at 11:00a.m.
- ITEM NO. 2: CLARIFICATION TO REFERENCES IN ORIGINAL BID DOCUMENTS**
-None
- ITEM NO. 3: REVISIONS TO BOOK 1**
-None
- ITEM NO. 4: REVISIONS TO BOOK 2**
-None
- ITEM NO. 5: REVISIONS TO BOOK 3, DIVISIONS 01 - 49 SPECIFICATION SECTIONS**
Change 1. Specification Section 13 08 00 ACOUSTICAL PANEL ENCLOSURE:
ADD 2.10 MANUFACTURERS
A. Manufacturers: Subject to compliance with specification requirements and availability of product, provide products by one of the following:
1. Kinetics Noise Control
2. IAC Acoustics
3. IMI Acoustics Corporation
4. Industrial Inc. Noise Control
***NARRATIVE ONLY, SPECIFICATION NOT RE-ISSUED**

ITEM NO. 6: REVISIONS TO DRAWING SHEETS

- Change 1. Drawing Sheet A6.0 ENLARGED PLAN KEYNOTES AND TYPICAL CONSTRUCTION:**
ADD Keynotes
ADD Revision 3 mark and dated 05/19/2015, attached.
- Change 2. Drawing Sheet S1.2A SECOND FLOOR FRAMING PLAN:**
REVISE Keynote 1 to define (20 GA) thickness for composite steel deck.
REVISE Keynote 3 to define (20 GA) thickness for composite steel deck.
ADD Revision 3 mark and dated 05/19/2015
***NARRATIVE ONLY, DRAWING NOT RE-ISSUED**
- Change 3. Drawing Sheet S1.3A THIRD FLOOR FRAMING PLAN:**
REVISE Keynote 1 to define (20 GA) thickness for composite steel deck.
REVISE Keynote 2 to define (20 GA) thickness for composite steel deck.
***NARRATIVE ONLY, DRAWING NOT RE-ISSUED**

ITEM NO. 7: REQUESTS FOR INFORMATION

- RFI-1** On Sheet A6.1 – details 1-3, 4-5 and 8 show a keynote 107-X. There is no 107-X keynote on sheet A6.0. Please advise.

RESPONSE: Information for Keynote 107-V, 107-W, and 107-X have been added to drawing A6.0.

- RFI-2** Drawing A9.2 detail 13 shows electrical box insulation in rated walls with fire stop putty pads. It also calls for "non-rated" walls to be wrapped with an acoustical putty wrap. Are ALL non-rated walls receiving this treatment, or just classrooms?

RESPONSE: Yes. All non-rated wall outlet boxes shall receive the treatment as noted, except where located in a one-sided GWB wall.

List of Attachments and Drawings:

Attachment(s) and Drawing(s) can be found on Cushing's Online Plan room at: <http://dfs.cushingco.com/pbc.htm>.

- 1 Drawing Sheet A6.0, ENLARGED PLAN KEYNOTES AND TYPICAL CONSTRUCTION, dated 05.19.2015

END OF ADDENDUM NO.3

CAUTION: This drawing may have been reproduced or altered in any form without the written authorization of ARCHITRAVE LTD. All rights reserved. No part of this document may be reproduced or transmitted in any form or by any means, electronic or mechanical, including photocopying, recording, or by any information storage and retrieval system, without the written authorization of ARCHITRAVE LTD.

WARNING: ASBESTOS-CONTAINING BUILDING MATERIALS ARE OR MAY BE PRESENT IN THIS BUILDING. AN ASBESTOS MANAGEMENT PLAN IS AVAILABLE IN THE SCHOOL FOR REVIEW UPON REQUEST. NO PERSON MAY DISTURB ASBESTOS-CONTAINING MATERIALS UNLESS THAT PERSON IS A LICENSED ASBESTOS WORKER OR CONDUCTS SUCH WORK IN ACCORDANCE WITH SPECIFICATIONS(S) CONTAINED IN THE PROJECT DOCUMENTS AND IN COMPLIANCE WITH ILLINOIS DEPARTMENT OF HEALTH RULES AND REGULATIONS.

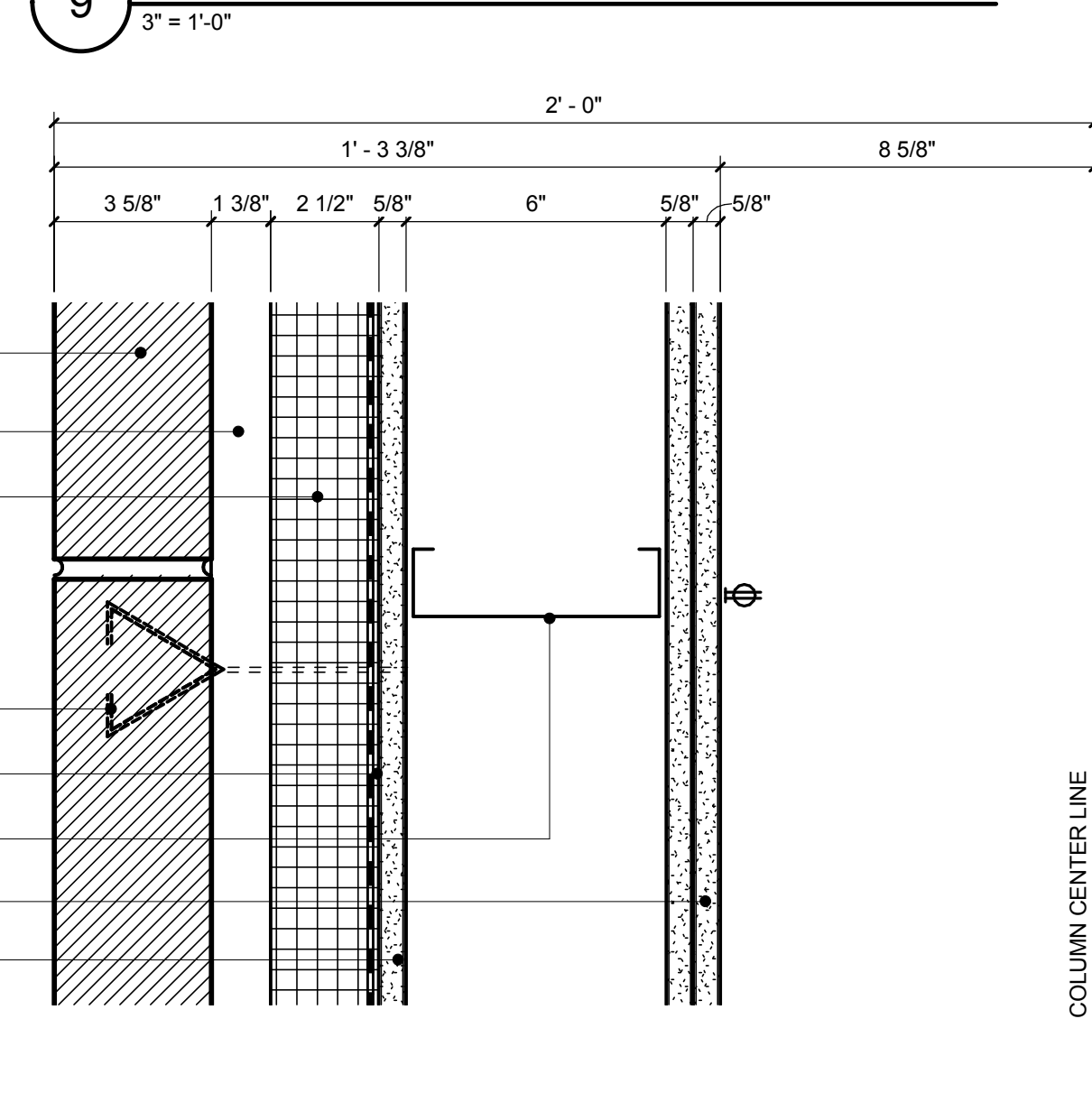
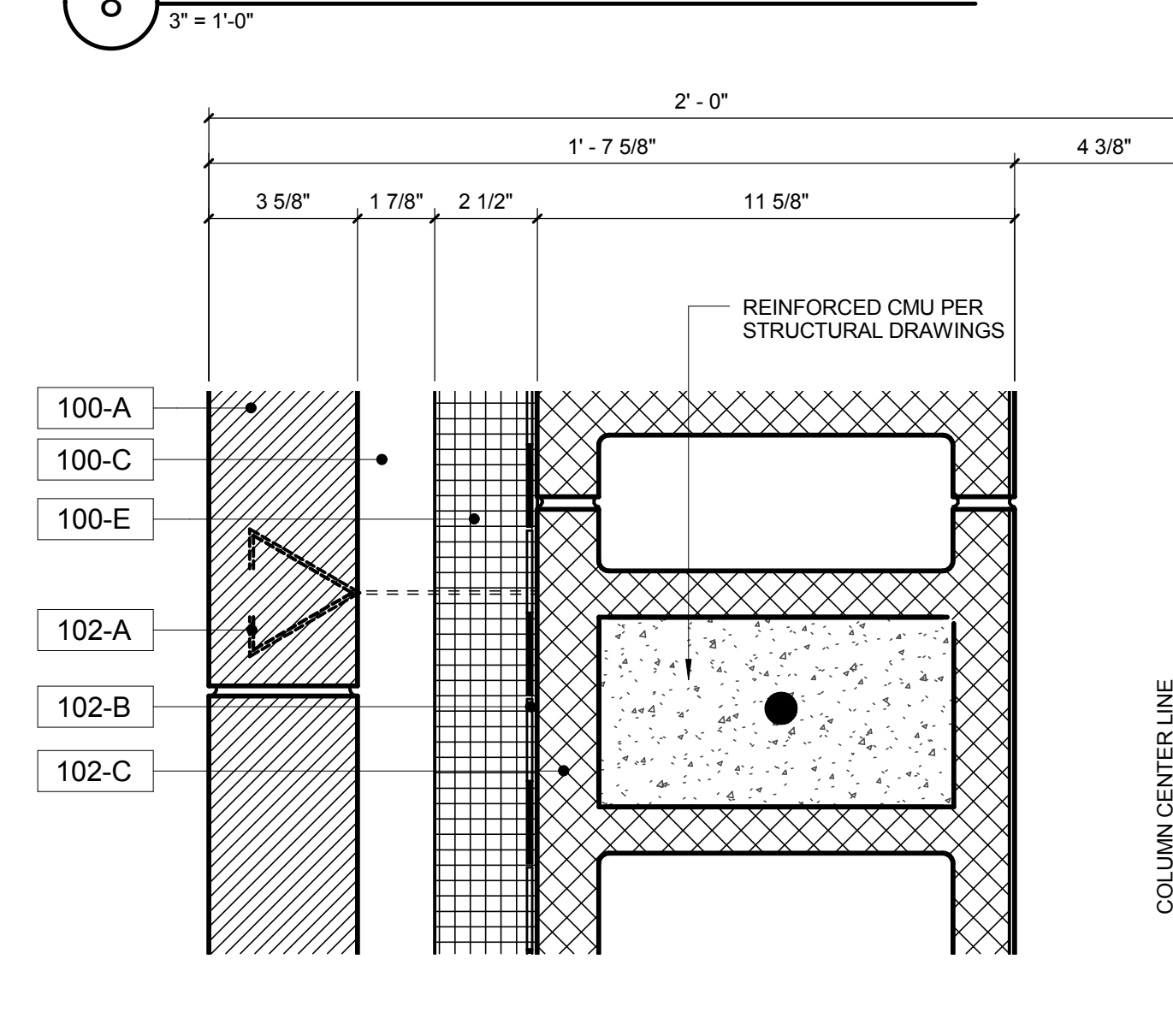
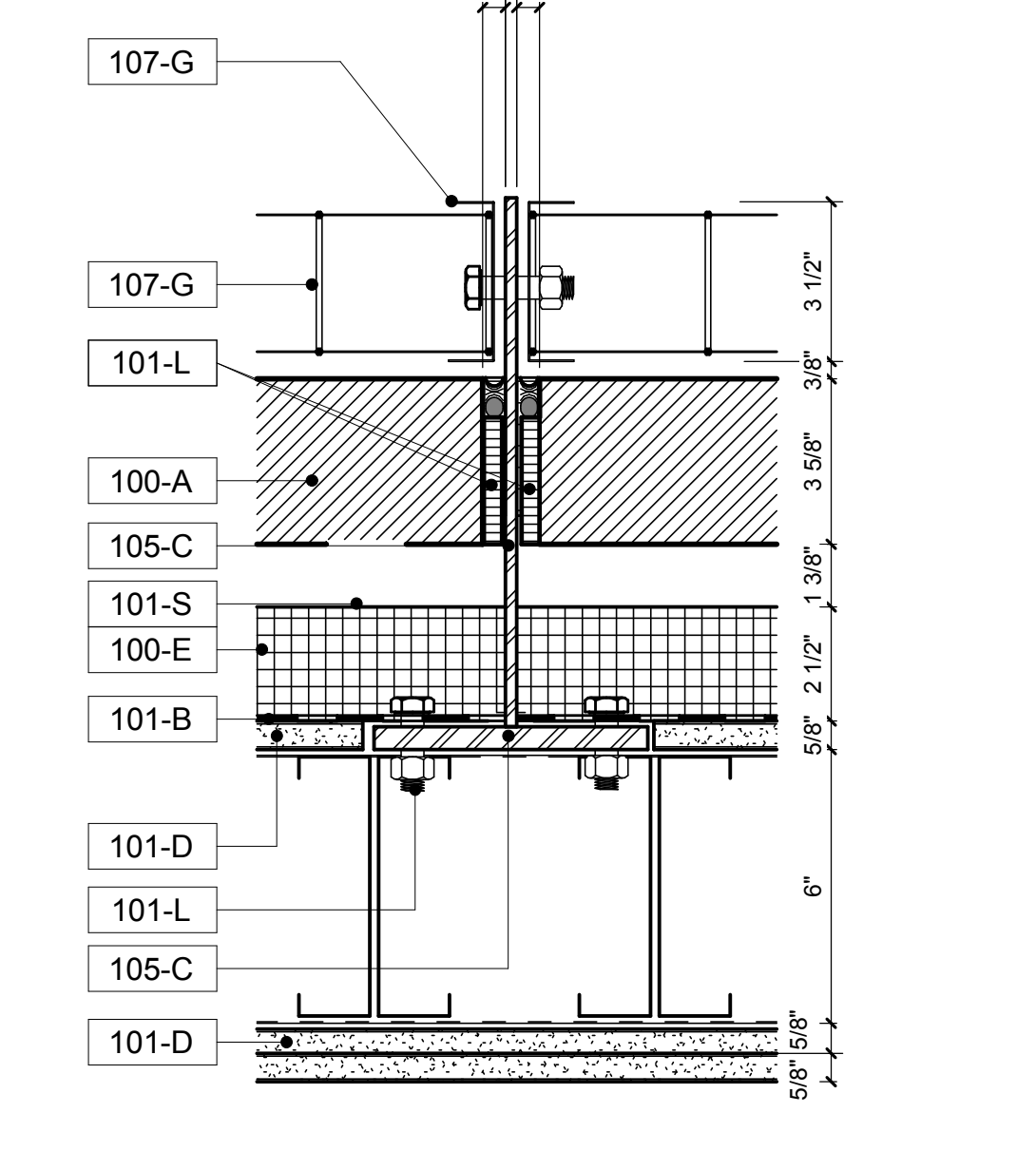
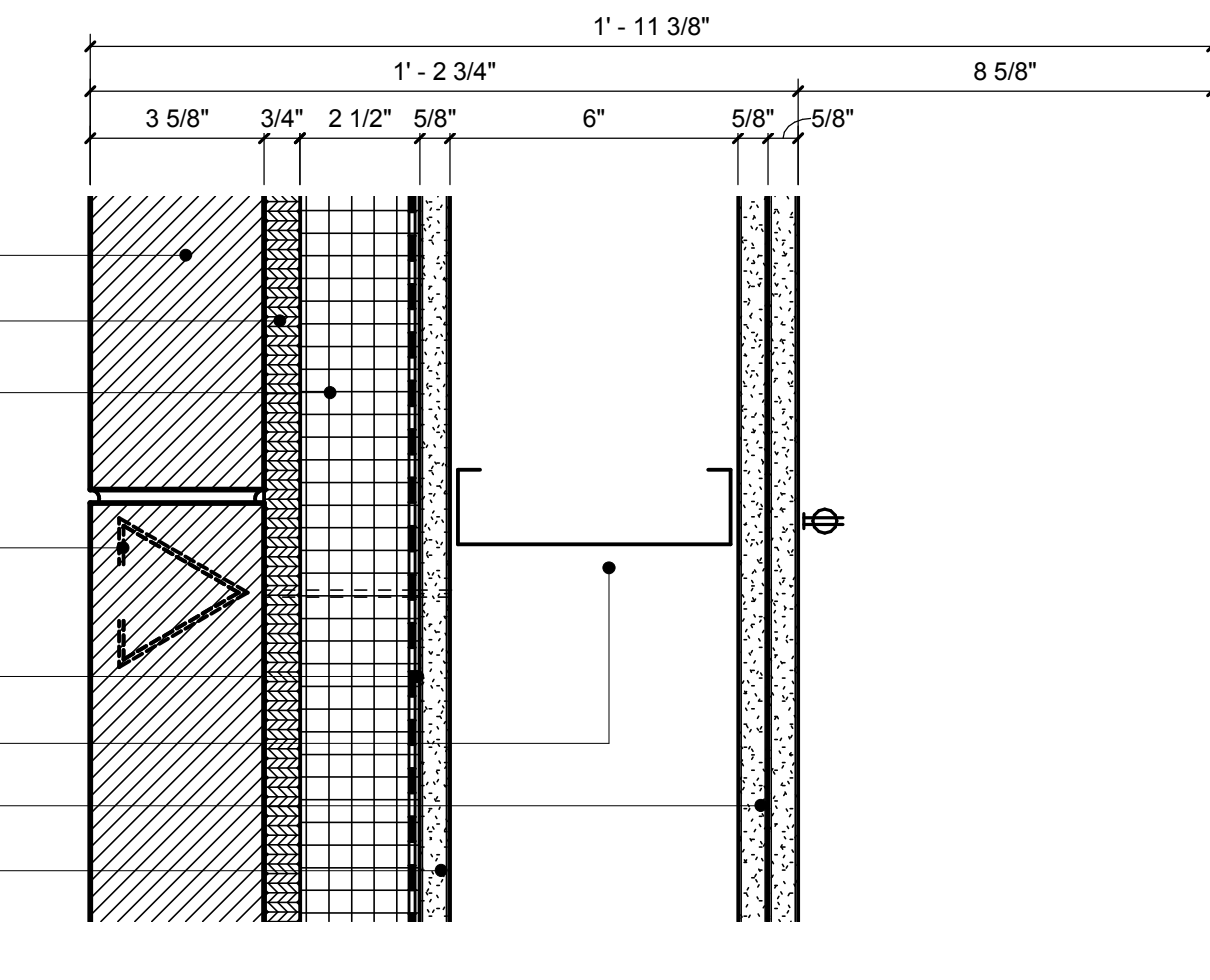
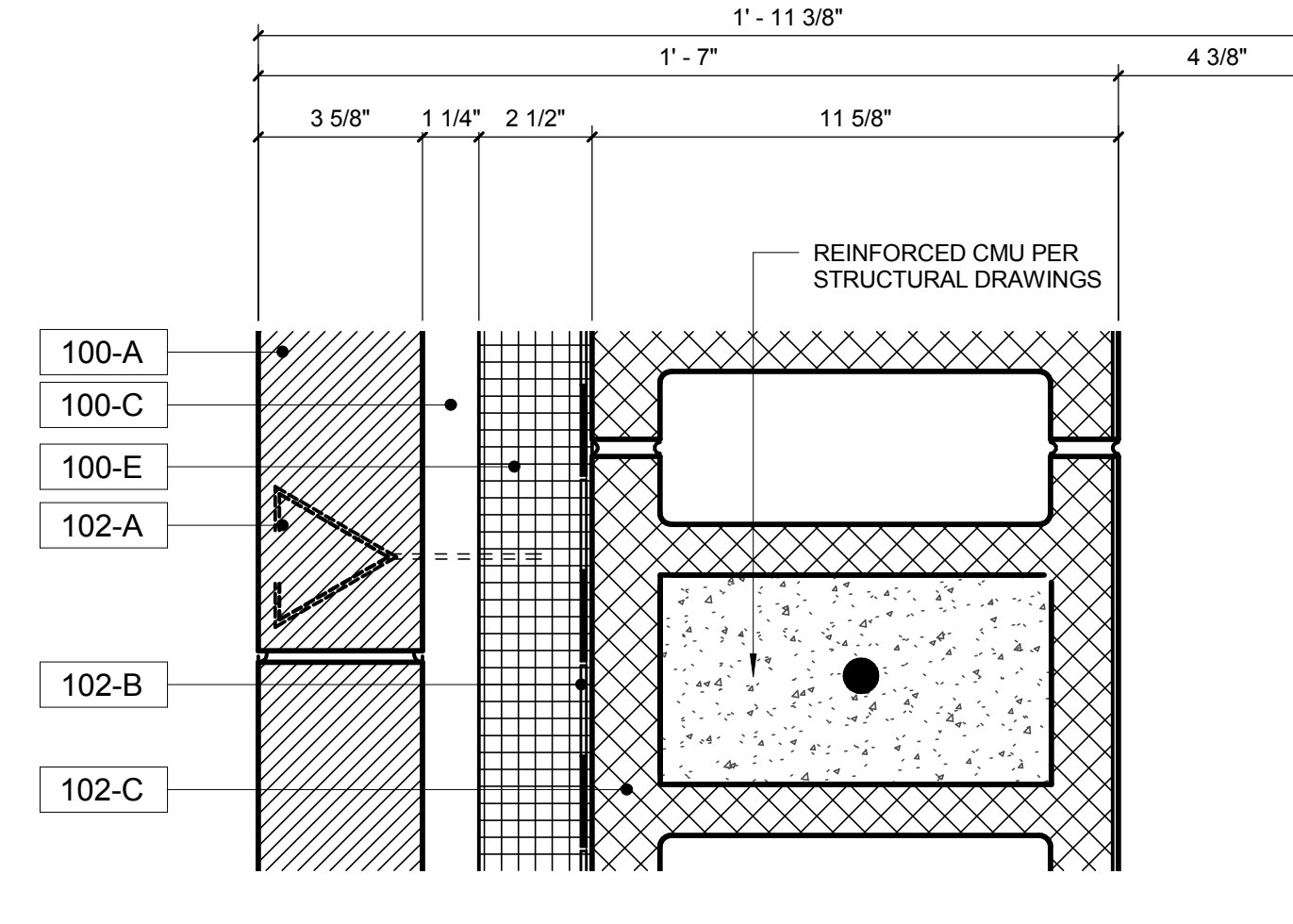
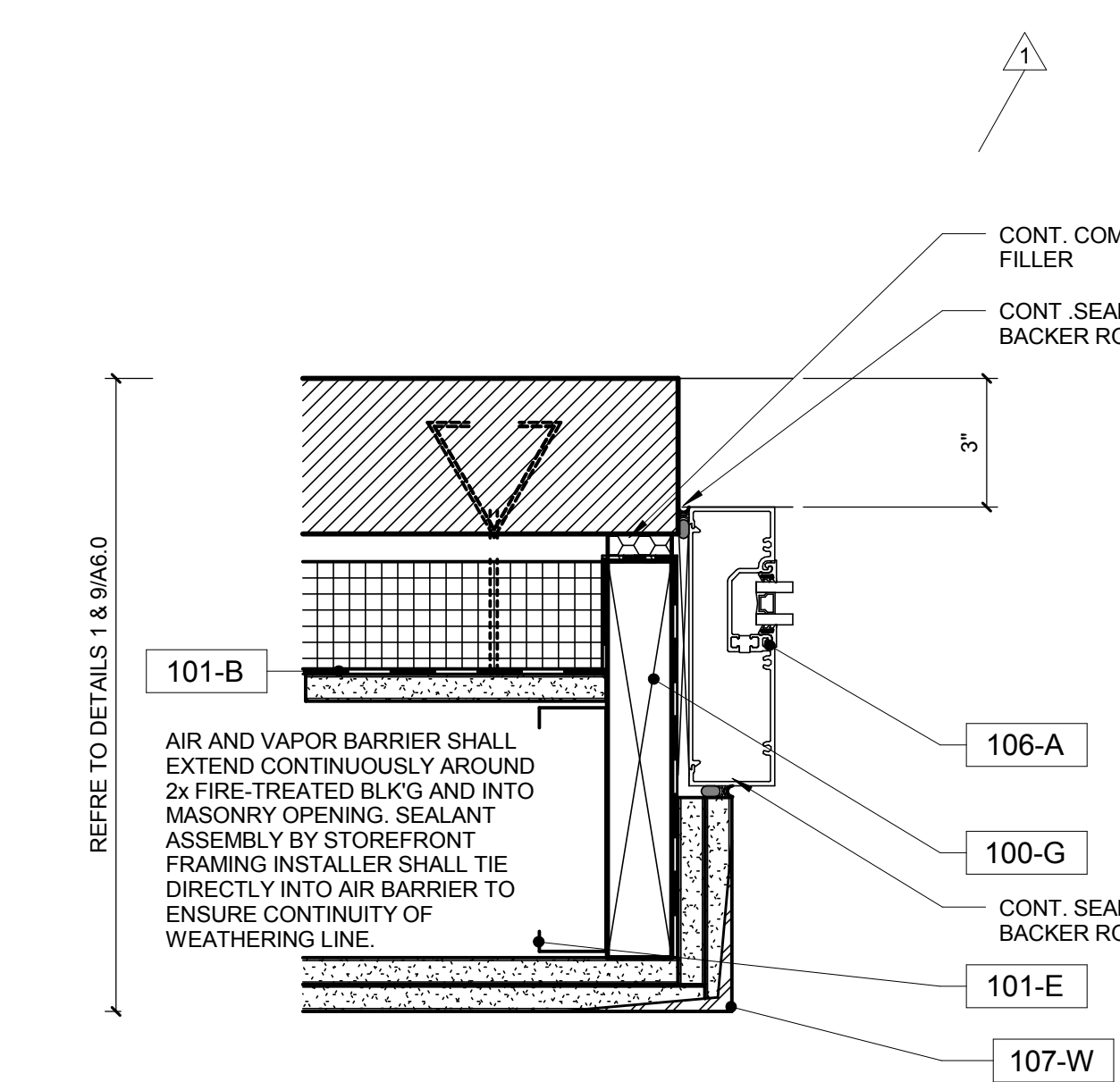
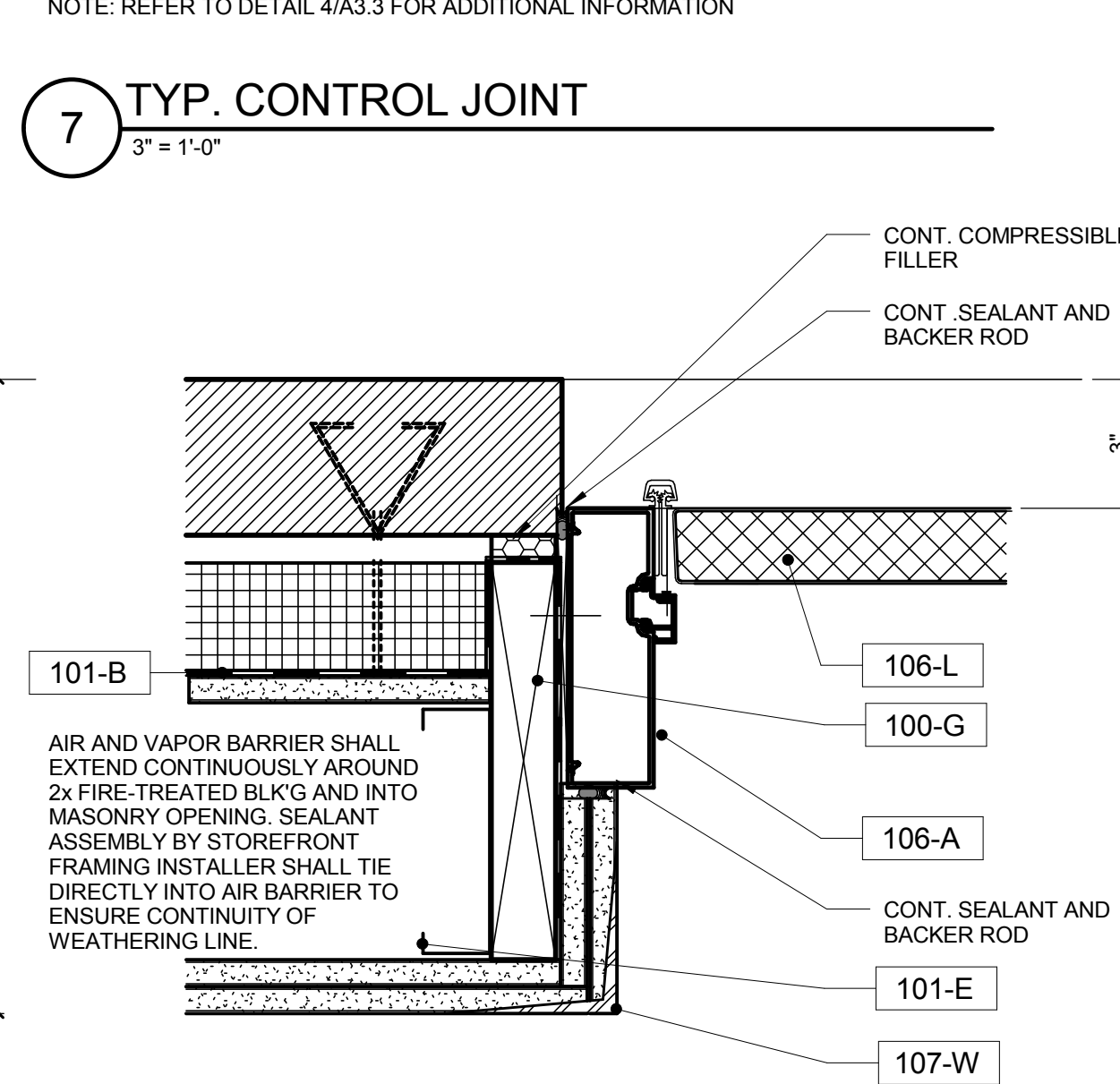
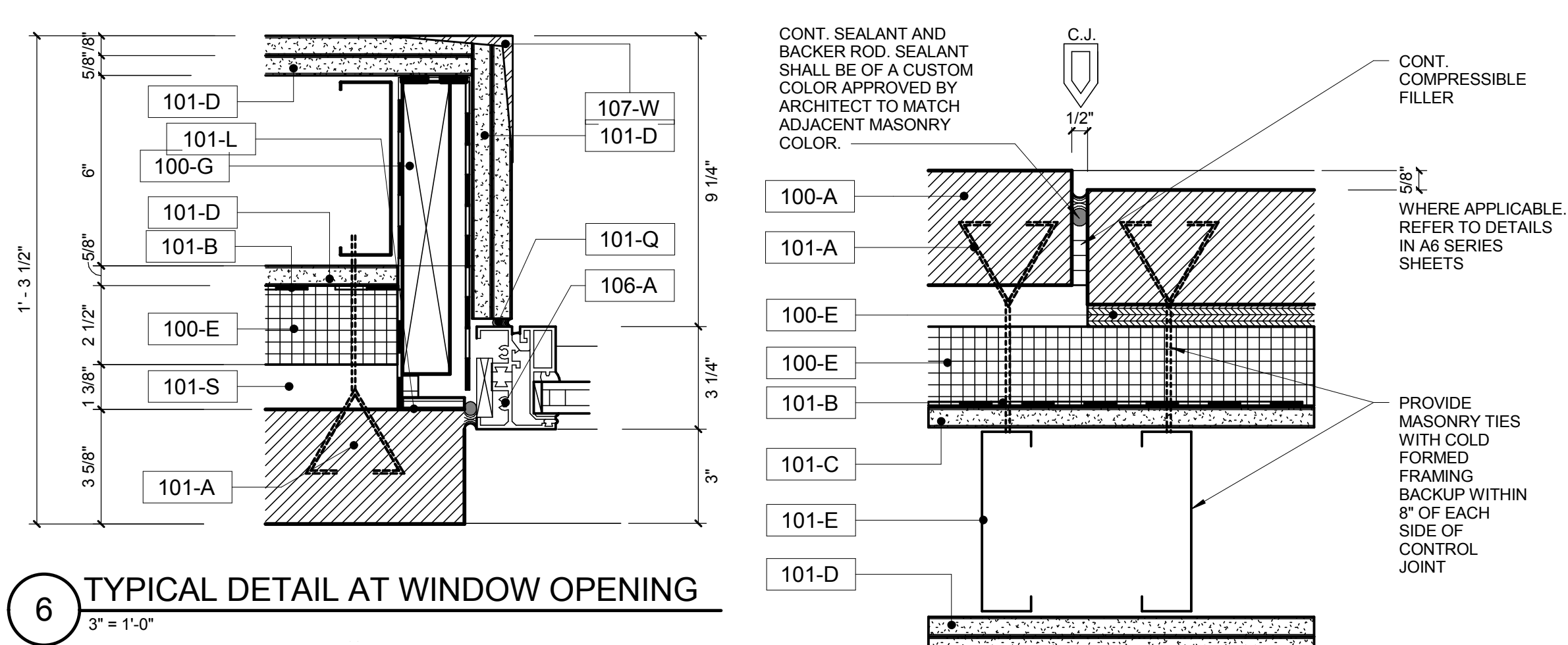
WARNING: LEAD-BASED PAINT MAY BE PRESENT WITHIN THE BUILDING. IT IS THE RESPONSIBILITY OF THE CONTRACTOR TO TAKE APPROPRIATE SAFETY MEASURES IN ACCORDANCE WITH APPLICABLE FEDERAL, STATE, AND LOCAL RULES AND REGULATIONS INCLUDING OSHA (1926.62) COMPLIANCE. ALL WORK WITH SURFACES CONTAINING LEAD-BASED PAINT SHALL BE DONE IN ACCORDANCE WITH SECTION 02.85.13.

100-A	UTILITY FACE BRICK, TYPE "X" OR "F" AS SCHEDULED, NOM. 4" x 8" x 12", COORDINATE TYPES WITH BUILDING ELEVATIONS AND SPECIFICATION SECTION 04.20
100-B	STONE SILL, SLOPED TO DRAIN WITH CONTINUOUS DRAIN EDGE. RISE ALL HEAD JOINTS AND INSTALL BACKER ROD + SEALANT. TYP. AT ALL WINDOW OPENINGS U.N.O. SET WITH TYPE 304 SST DOWELS AND/OR CRAMP ANCHORS (MIN. 2 PER PIECE). INSTALL CORNUSE FLASHING WITH DOWN-SLOPE SEALING PENETRATION WATER-TIGHT. PROVIDE COTTON SASH ROPE WEEPS, 24" O.C., MIN. (2) PER SILL. REFER TO SPECIFICATION SECTION 04.20.00 FOR ADDITIONAL INFORMATION.
100-C	WALL CAVITY (AIR SPACE): MAINTAIN CLEAR OF MORTAR. PROVIDE CLEAR DRAINAGE PATH TO CONVEY INFILTRATING WATER TO THE EXTERIOR WALL VENTS OR WEEPS. INSTALL CONTINUOUS MORTAR COLLECTION DEVICE AT BASE OF WALL AT ALL HORIZONTAL WALL OFFSETS AND ABOVE ALL THRU-WALL FLASHING. (REFER TO ALSO SEE NOTE 101-E)
100-D	2-1/2" EXTRUDED POLYSTYRENE BOARD CAVITY INSULATION (1.5" MIN.) REFER TO SPECIFICATION SECTION 04.20.00 FOR INTERIOR, INTSL. BOARD AND MORTAR CAVITY DRAINAGE MATTING WHERE NOTED.
100-E	MORTAR COLLECTION DEVICE: PROVIDE AIR BARRIER THROUGH AND ABOVE ALL THRU-WALL FLASHING IN THICKNESS AS REQUIRED FOR FRICTION FIT. ADDITIONALLY PROVIDE BETWEEN BACK OF MASONRY VENEER AND INTERIOR FINISH. PROVIDE AIR BARRIER THROUGH AND ABOVE ALL THRU-WALL FLASHING. LOCATE AS TO PREVENT LOGS FROM CAVITY MORTAR DROPPINGS AND TO CONVEY INFILTRATING WATER TO THE EXTERIOR VIA WEEP CELL VENTILATION OR ROOF WEEPS.
100-F	THRU-WALL SUBMITTED SPANFLY SHEET FLASHING WITH PREFABRICATED PRE-FORMED CORNER BOOTS AT ALL END DAMS, ALL OUTSIDE CORNERS + ALL BREAKS. EXTEND UP WALL MIN. 2" AND SEAL TO AIR BARRIER FOR CONTINUITY OF AIR BARRIER. PROVIDE STAINLESS STEEL OVER EDGE ALL EXPOSED SIZES. REFER TO SPECIFICATION SECTION 04.20.00 FOR CONTINUOUS FIRE-TREATED WOOD BLOCKING SECURED TO COLD-FORMED FRAMING.
100-G	EXTERIOR LOOSE STEEL LINTEL (REFERENCE STRUCTURAL DRAWINGS); GALVANIZED, CLEANED, SHOP PRIME AND FIELD PAINTED TO MATCH EXTERIOR BRICK COLOR, TYP. U.N.O.
100-H	EXTERIOR LOOSE STEEL LINTEL (REFERENCE STRUCTURAL DRAWINGS); GALVANIZED, CLEANED, SHOP PRIME AND FIELD PAINTED TO MATCH EXTERIOR BRICK COLOR, TYP. U.N.O.
100-I	OPEN NUMBER (NOT USED) 03
100-J	STRUCTURAL STEEL SHELF ANGLE + STIFFENER PLATES (REFERENCE STRUCTURAL DRAWINGS); GALVANIZED, CLEANED, SHOP PRIME ALL SHELF ANGLES. FIELD PAINT ALL EXPOSED SURFACES.
100-K	1/2" JOINT BETWEEN 1" W.D. BLOCKING + BARRIER + BRICK VENEER. OMIT MORTAR AND INSTALL COMPRESSIBLE FILLER. COMPATIBLE WITH ALL ADJACENT MATERIALS. SEALANT COLOR SHALL BE CUSTOM COLOR TO MATCH CONTINUOUS SEAL. + CONFORM TO ADHESION REQUIREMENTS.
100-M	OMIT MORTAR AND FRICTION FIT WEEP-HOLE VENTILATOR IN HEAD JOINTS AT 24" O.C. (MAX.).
100-N	3/4" RELIEF VENT DEFLECTION JOINT WITH CONT. COMPRESSIBLE FILLER + SEALANT. CONTRACTOR SHALL ENSURE COMPATIBILITY OF SEALANT WITH ALL ADJACENT MATERIALS. SEALANT COLOR SHALL BE CUSTOM COLOR TO MATCH ADJACENT FACE BRICK AND STONE. REFER ALSO TO SPECIFICATION SECTION 07.02.00.
100-P	STEEL BENT PLATE LINTEL WITH EXP. ANCHORS INTO CMU BOND BEAM. REFER TO STRUCTURAL DRAWINGS. SHOP PRIME ALL LINTELS. FIELD PAINT ALL EXPOSED SURFACES.
100-Q	CUSTOM LIP STRETCHER FACE BRICK SHOP FABRICATED FOR 3/4" RELIEF JOINT. TYPICAL BELOW ALL SHELF ANGLES. SUBMIT SHOP DRAWING FOR APPROVAL.
100-R	STONE HEAD ACCENT BAND. SLOPED TO DRAIN WITH CONTINUOUS DRAIN EDGE. INSTALL ON THRU-WALL FLASHING WITH END DAMS. SEAL FLASHING PENETRATIONS WATER-TIGHT. PROVIDE COTTON SASH ROPE WEEPS, 24" O.C., MIN. (2) PER HEAD. REFER TO SPECIFICATION SECTION 04.20.00 FOR ADDITIONAL INFORMATION.
100-S	STONE BUILDING BASE. TYPICAL LINTLS NOM. 1" x 10" x 2" (7/8" x 2") SET WITH TYPE 304 SST CRAMP ANCHORS AND DOWELS. PROVIDE MIN. 3/16" THICK CRAMP ANCHORS AND 3/8" DIA. DOWELS ALSO. PROVIDE COTTON SASH ROPE WEEPS, 24" O.C. REFER TO SPECIFICATION SECTION 04.20.00 FOR ADDITIONAL INFORMATION.
101-A	HOT-DIP GALVANIZED TWO-PIECE ADJUSTABLE MASONRY VENEER ANCHORS SECURED TO COLD-FORMED FRAMING THROUGH ROOF INSULATION AND PROVIDED WITH POLYETHYLENE FOAM TAPE. SPACE ANCHORS NO FURTHER THAN 16" HORIZONTALLY AND 16" VERTICALLY (MAX. ONE PER 2.5 FT. OF WALL AREA). COORDINATE ANCHOR PLACEMENT WITH COLD-FORMED STEEL FRAMING AND PENETRATION LAYOUT AS NOTED. DO NOT BRIDGE BRICK EXPANSION JOINTS WITH BRICK TIES.
101-B	CONTINUOUS SELF-ADHERING SHEET AIR AND VAPOR BARRIER. PROVIDE RETURNS AT JAMBS, HEADS, AND SILLS OF ALL OPENINGS AND BRANGLS LAP AND SEAL AT ALL JOINTS, PENETRATIONS, AND TERMINATIONS TO ADJACENT ASSEMBLIES TO ENSURE FULL CONTINUITY OF WEATHERING LINE AT BUILDING ENCLOSURE. PROVIDE FULLY COMPATIBLE TRANSITION PILES AT ALL JOINTS, PENETRATIONS, AND TERMINATIONS. REFER TO SPECIFICATION SECTION 07.02.01 AND TYPICAL DETAILS ON SHEET 463.
101-C	ONE (1) LAYER OF 5/8" TYPE "X" EXTERIOR GLASS-MAT GYPSUM SHEATHING, TAPE AND SEAL ALL JOINTS AND PENETRATIONS AS REQUIRED TO MEET A U.L. DESIGN FOR 1-HOUR RATED EXTERIOR ASSEMBLY. REFER TO SPECIFICATION SECTION 08.14.43.
101-D	TWO (2) LAYER OF 5/8" TYPE "X" GYPSUM BOARD. OUTER LAYER ABUSE RESISTANT WHERE NOTED. TAPE AND SEAL ALL JOINTS AND PENETRATIONS AS REQUIRED TO MEET A U.L. DESIGN FOR 1-HOUR RATED EXTERIOR ASSEMBLY. REFER TO SPECIFICATION SECTION 08.14.43.
101-E	COLD-FORMED LIGHT GAUGE METAL FRAMING SPACED AT 16" O.C. (MAX.) IF DEPTH U.N.O. STRUCTURAL PERFORMANCE, GAUGE OF MEMBERS AND CONNECTIONS TO PRIMARY STRUCTURAL FRAME SHALL BE DESIGNED BY THE INSTALLER UNDER THE DIRECT SUPERVISION OF A LICENSED STRUCTURAL ENGINEER REGISTERED IN THE STATE OF ILLINOIS. REFER TO STRUCTURAL DRAWINGS AND SPECIFICATION SECTION 04.20.00.
101-F	ONE (1) LAYER 5/8" TYPE "X" INTERIOR GYPSUM BOARD TAPED AND SANDED W/ JOINT COMPOUND, PRIME AND PAINTED FINISH AT ALL EXPOSED SURFACES. PRIME TOP AND SMOKE SEAL. ALL PENETRATIONS AND TERMINATIONS WITH MIN. 1-1/2" RATED FIRE-STOPPING SYSTEM. PROVIDE HIGH-STRENGTH CORNER ON ALL EXPOSED OUTSIDE WALL CORNERS IN AREAS WITHOUT SOLID SURFACE WAINSCOT. PROVIDE A BEAD AT ALL TERMINATIONS. INSTALL BACKER ROD AND SEALANT TO ADJACENT SURFACES WHETHER OR NOT EXPOSED TO VIEW (TYP. U.N.O.) PAINT ALL EXPOSED FACES. PROVIDE MOISTURE AND ABUSE RESISTANT GYPSUM BOARD TO 8'-0" A.F.F. IN ALL AREAS EXPOSED TO VIEW EA. FLR.
101-G	OPEN NUMBER (NOT USED) 04
101-H	COLD-FORMED LINTEL MEMBER SIZING AND GAUGE BY COLD-FORMED FRAMING INSTALLER. FRICTION FIT 4" MIN. CONTINUOUS MINERAL FIBER INSULATION IN TRACK BETWEEN STUDS AND IN ALL HEADERS (TYP.).
101-I	DEFLECTION TRACK ANCHORAGE OF COLD-FORMED FRAMING TO BUILDING STRUCTURE. MEMBER SIZING AND GAUGE BY COLD-FORMED FRAMING INSTALLER. DELEGATED DESIGN ENGINEER. DESIGN CRITERIA: 1/2" DEFLECTION ALONG PERIMETER OF BUILDING AND 1" AT THE INTERIOR OF THE BUILDING. REFERENCE STRUCTURAL DRAWINGS FOR ADDITIONAL DESIGN CRITERIA.
101-K	BRACING ANCHORAGE OF COLD-FORMED FRAMING TO BUILDING STRUCTURE. MEMBER SIZING AND GAUGE BY COLD-FORMED FRAMING INSTALLER. DELEGATED DESIGN ENGINEER. ANTICIPATE 1/2" DEFLECTION AT BUILDING PERIMETER PRIMARY STRUCTURAL FRAME. REFERENCE STRUCTURAL DRAWINGS FOR ADDITIONAL DESIGN CRITERIA.
101-L	FIRE-RATED MOVEMENT JOINT. 1/2" MAX. FILL WITH MINERAL FIBER INSULATION AND INSTALL FLEXIBLE SEALANT (1-HR REQUIRED), TYP.

101-M	CONTINUOUS INTERIOR FLASHING VAPOR BARRIER, STEGO WRAP 15 MIL, WRAP 4" UP BEHIND INTERIOR GWB MIN. 4" AND EXTEND 4" HORIZONTALLY BELOW FINISH FLOORING. CONTRACTOR SHALL PROVIDE CONTINUOUS LIGHT GA. BACKER PLATE FOR ANCHORAGE OF VAPOR BARRIER.
101-N	4" CONTINUOUS MINERAL FIBER INSULATION FRICTION FIT BETWEEN STUDS + TRACKS AT ALL COLD-FORMED FRAMING HEADERS, SILLS + JAMBS. BASE OF WALL TYP. BUTT JOINTS TIGHT.
101-O	STRUCTURAL STEEL BENT PLATE WELDED TO SPANFLY FRAMING. REFERENCE STRUCTURAL DRAWINGS.
101-Q	1/2" HORIZONTAL 1-HR RATED CONTROL JOINT IN GWB SHEATHING. PROVIDE CONTINUOUS BACKER ROD + RATED SEALANT.
101-R	CONTINUOUS MINERAL FIBER INSULATION FRICTION FIT BETWEEN STUDS + TRACKS AT ALL COLD-FORMED FRAMING HEADERS, SILLS + JAMBS. + BASE OF WALL, TYP. BUTT JOINTS TIGHT.
102-A	HOT-DIP GALVANIZED TWO-PIECE ADJUSTABLE 1" x 10" x 2" (7/8" x 2") MASONRY TIE AT 24" O.C. VERTICALLY TO LATERALLY BRACE BRICK VENEER TO INTERIOR CMU W/ TAPE. STOP LADDERS PERMITTED ON EITHER SIDE OF THE MASONRY CONTROL JOINTS WITH BRICK TIES. REFER TO SPECIFICATION SECTION 04.20.00 AND TYPICAL DETAILS.
102-B	CONTINUOUS FLUID APPLIED AIR AND VAPOR BARRIER. PROVIDE RETURNS AT JAMBS, HEADS, AND SILLS OF ALL OPENINGS AND BRANGLS LAP AND SEAL AT ALL JOINTS, PENETRATIONS, AND TERMINATIONS TO ADJACENT ASSEMBLIES TO ENSURE FULL CONTINUITY OF WEATHERING LINE AT BUILDING ENCLOSURE. PROVIDE FULLY COMPATIBLE TRANSITION PILES AT ALL JOINTS, PENETRATIONS, AND TERMINATIONS. REFER TO SPECIFICATION SECTION 07.02.01 AND TYPICAL DETAILS ON SHEET 463.
102-C	1" NOMINAL REINFORCED CONCRETE MASONRY UNITS. REFER TO STRUCTURAL DRAWINGS FOR ADDITIONAL INFORMATION.
102-D	1" NOMINAL PREMANUFACTURED CONCRETE MASONRY BALKANCE SILL UNIT. TYPICAL AT ALL OUTSIDE CMU SILLS AND CORNERS. ALL EXPOSED FACES SHALL BE PRIME AND PAINTED. REFER TO SPECIFICATION SECTION 07.02.00 AND TYPICAL DETAILS ON SHEET 463.
102-E	REINFORCED BOND BEAM OR STEEL AND CMU LINTEL AS SCHEDULED. REFER TO STRUCTURAL DRAWINGS. SHOP PRIME AND FIELD PAINT ALL SURFACES EXPOSED TO VIEW.
102-F	BACKER ROD: PREMANUFACTURED CONCRETE MASONRY BALKANCE SILL UNIT. TYPICAL AT ALL OUTSIDE CMU SILLS AND CORNERS. ALL EXPOSED FACES SHALL BE PRIME AND PAINTED. REFER TO SPECIFICATION SECTION 07.02.00 AND TYPICAL DETAILS ON SHEET 463.
102-G	1" NOMINAL PREMANUFACTURED CONCRETE MASONRY BALKANCE SILL UNIT. TYPICAL AT ALL OUTSIDE CMU SILLS AND CORNERS. ALL EXPOSED FACES SHALL BE PRIME AND PAINTED. REFER TO SPECIFICATION SECTION 07.02.00 AND TYPICAL DETAILS ON SHEET 463.
102-H	1" NOMINAL PREMANUFACTURED CONCRETE MASONRY BALKANCE SILL UNIT. TYPICAL AT ALL OUTSIDE CMU SILLS AND CORNERS. ALL EXPOSED FACES SHALL BE PRIME AND PAINTED. REFER TO SPECIFICATION SECTION 07.02.00 AND TYPICAL DETAILS ON SHEET 463.
103-A	DALVANIZED METAL ROOF DECKING, SLOPED TO DRAIN (U.N.O.). REFER TO STRUCTURAL DRAWINGS FOR ROOF DECK / STRUCTURAL METALTY. REFER TO SPECIFICATION SECTION 05.21.23 "METAL DECKING"
103-B	5/8" ROOFING SUBSTRATE BOARD THERMAL BARRIER, TYPE "X" CLASS MATED WATER-RESISTANT FACTORY PRIME GYPSUM BOARD. REFER TO SPECIFICATION SECTION 07.02.00.
103-C	CONTINUOUS ROOFING SYSTEM MULTI-PLY BASE SHEET MEMBRANE (TEMPORARY ROOF VAPOR RETARDER); REFER TO SPECIFICATION SECTION 07.02.00 FOR MORE INFORMATION.
103-D	2" MINIMUM THICKNESS POLYISOCYANURATE BOARD ROOFING INSULATION, (2) LAYERS OF 2-1/2" WITH SLOPPED JOINTS. REFER TO SPECIFICATION SECTION 07.02.00.
103-E	THERMAL POLYISOCYANURATE INSULATION BARRIERS, CONFIGURED TO ACHIEVE A MINIMUM POSITIVE ROOF SLOPE OF 1/2" PER FOOT IN ALL DIRECTIONS. REFER TO ROOF PLANS DRAWINGS FOR PROPOSED GENERAL ROOF SLOPE. COMPARISON ON CONTRACTOR'S RESPONSIBILITY FOR COORDINATING ALL ROOF PENETRATIONS AND EQUIPMENT INSTALLATIONS WITH SLOPED INSULATION INSTALLATIONS TO ENSURE THAT ALL AREAS OF ROOF HAVE POSITIVE DRAINAGE WITH MINIMUM SLOPED INSULATION. REFER TO SPECIFICATION SECTION 07.02.00.
103-F	1/2" ROOF INSULATION COVER BOARD, TYPE "X" CLASS MATED WATER-RESISTANT FACTORY PRIME GYPSUM BOARD. REFER TO SPECIFICATION SECTION 07.02.00.
103-G	MULTIPLY SBS MODIFIED BITUMINOUS ROOFING MEMBRANE WITH GRANULATED CAP SHEET AND ROOF COATING. EXTEND ROOFING MEMBRANE UP PARAPET AND OVER THE FULL DEPTH OF PARAPET. LAP OVER FRONT FACE OF PARAPET AND AIR AND VAPOR BARRIER BY 2" MIN. REFER TO SPECIFICATION SECTION 07.02.00 FOR MORE INFORMATION.
103-H	CONTINUOUS 3" INSULATION GANT STRIP, TYP.
103-I	OPEN NUMBER (NOT USED) 01
103-J	OPEN NUMBER (NOT USED) 02
103-K	CONTINUOUS PREFINISHED ALUMINUM COPING CAP WITH CONDENSED DRAINAGE PLATES AND FRONT AND BACK GLETS AND COMPRESSION BAR. ALL CORNER AND END PIECES SHALL BE PRE-FABRICATED WITH FULLY WELDED SEAMS. REFER TO SPECIFICATION SECTION 07.02.01.
103-L	(3) LAYERS OF 3/4" TREATED PLYWOOD. GLUED AND SCREWED TOGETHER SECURED TO WALL STRUCTURE. AT COLD-FORMED FRAMING: SECURE THROUGH SINGLE LAYER OF 5/8" TREATED PLYWOOD AND TO TOP TRACK OF COLD-FORMED METAL FRAMING WITH COUNTERSINK GALVANIZED SCREWS @ 24" O.C. AND @ 12" O.C. WITHIN 12" OF BUILDING CORNERS - AT CMU / BOND-BEAM: INSTALL PLYWOOD WITH ANCHOR BOLTS SET INTO CMU BOND BEAM AT 24" O.C. AND 12" O.C. WITHIN 12" OF BUILDING CORNERS. COUNTERSINK SCREWS TO PERMIT FLUSH INSTALLATION OF WALL STRUCTURE.
103-N	STRUCTURAL W/ JOINT. REFER TO STRUCTURAL DRAWINGS AND SPECIFICATIONS, TYP.
103-O	STRUCTURAL ROOF FRAMING. REFER TO STRUCTURAL DRAWINGS AND SPECIFICATIONS, TYP.
103-P	CONTINUOUS LOW-RISE SPRAY POLYURETHANE FOAM INSULATION BETWEEN COLD-FORMED FRAMING + FILLING ALL GAPS, TYP. MIN. 12" HI. REFER TO SPECIFICATION SECTION 07.21.16.
103-Q	OPEN NUMBER (NOT USED) 05
103-R	STRUCTURAL STEEL BENT PLATE WELDED TO ROOF BEAM + DECK FRAMING. COORDINATE ANGLE SIZING AND LOCATIONS WITH COLD-FORMED FRAMING DELEGATED DESIGN ENGINEER.
103-T	OPEN NUMBER (NOT USED) 06

104-A	FINISHED GRADE, SLOPE AT A MINIMUM OF 1/4" PER FOOT TO DRAIN AWAY FROM BUILDING. REFER TO CIVIL AND LANDSCAPE DRAWINGS FOR ADDITIONAL INFORMATION.
104-B	REINFORCED CONCRETE FOUNDATION WALL AND FOOTING. REFER TO STRUCTURAL DRAWINGS FOR ALL CONCRETE REINFORCEMENT DETAILS AND ADDITIONAL INFORMATION. TYP. CONTRACTOR SHALL COORDINATE TOP OF FOUNDATION COMPRESSIVE STRENGTH WITH FINISH FLOORING. REFER TO SPECIFICATION SECTION 05.21.00 FOR ADDITIONAL INFORMATION.
104-C	BITUMINOUS DAMP-PROOFING AND PROTECTION COATING ON EXTERIOR FACE OF ALL EXTERIOR WALLS IN ALL BELOW GRADE LOCATIONS. EXTEND FROM BOTTOM OF WALL FOOTINGS TO FINISHED GRADE.
104-D	REINFORCED CONCRETE FLOOR SLAB THICKENED SLAB AT PERIMETER AND WHERE REQUIRED FOR SUPPORT OF NON-BEARING INTERIOR WALLS. REFER TO STRUCTURAL DRAWINGS FOR REINFORCEMENT AND DETAILS. UTILIZE CHAIRS TO ENSURE PROPER PLACEMENT OF ALL SLAB REINFORCEMENT.
104-E	CONCRETE VAPOR RETARDER (DOWN SLOPED), LAYERS PER MANUFACTURER'S REQUIREMENTS. TURN UP AT PERIMETER AND SEAL ALL PENETRATIONS AND TERMINATIONS. REFER TO SPECIFICATION SECTION 05.21.00 FOR FURTHER INFORMATION.
104-F	COMPACTED SMALL-GRAN FILL (ENGINEERED FILL). REFER TO STRUCTURAL DRAWINGS AND SPECIFICATIONS.
104-G	CONTINUOUS 2" THICK (5-10 MIN) POLYISOCYANURATE PERIMETER BOARD INSULATION EXTENDS FROM BOTTOM OF THICKENED FLOOR SLAB DOWN TO TOP OF FOOTING. BUTT TIGHTLY AT JOINTS AND PROTECT FROM DAMAGE. REFER TO SPECIFICATION SECTION 05.21.00 FOR ADDITIONAL INFORMATION.
104-H	CONTINUOUS 1/2" EXPANSION JOINT FILLER. REFER TO SPECIFICATION SECTION 03.30.00.
105-A	REINFORCED LIGHTWEIGHT CONCRETE - METAL DECK COMPOSITE SLAB. REFER TO STRUCTURAL DRAWINGS AND SPECIFICATION FOR ADDITIONAL INFORMATION.
105-B	CONCRETE DECK EDGE. REFER TO STRUCTURAL DRAWINGS AND SPECIFICATIONS FOR LOCATIONS, SIZES AND ADDITIONAL DETAILS.
105-C	STRUCTURAL STEEL BENT PLATE OR ANGLE AS DETAILED ON STRUCTURAL DRAWINGS. REFER TO STRUCTURAL DRAWINGS FOR ADDITIONAL INFORMATION.
105-D	STRUCTURAL STEEL BEAM. REFER TO STRUCTURAL DRAWINGS FOR SIZES AND LOCATIONS. TYP.
105-E	STRUCTURAL STEEL COLUMN. REFER TO STRUCTURAL DRAWINGS FOR LOCATIONS, TYPES.
105-F	CEMENTITIOUS PREPREGGING (SPRAY APPLIED FIRE RESISTIVE MATERIAL) APPLIED TO ACHIEVE REQUIRED FIRE RATINGS. REFER TO CODE MATRIX AND FIRE RATING REQUIREMENTS ON G2 DRAWING SHEETS TO DETERMINE REQUIRED LOCATIONS. REFER TO SPECIFICATION SECTION 07.14 FOR ADDITIONAL INFORMATION.
105-G	RATED FLOOR SLAB PERIMETER FIRE BARRIER SYSTEM: INTERTEK ACE 421-19, 4" MINERAL FIBER INSULATION FRICTION FIT BETWEEN THE FRAMING MEMBERS WITH MIN. 2" OF FIRESTOP JOINT SPRAY. APPLIED IN THICKNESS AS SPECIFIED IN APPROVED ASSEMBLY DRAWINGS. REFER ALSO TO SPECIFICATION SECTION 07.14.13.
105-H	SPRAY-INSTALLED GLASS FIBER INSULATION, 4" MINIMUM THICKNESS (R = 16.0 MIN). REFER TO SPECIFICATION SECTION 07.21.00.
106-A	PRE-FINISHED THERMALLY BROKEN ALUMINUM STORE FRONT WINDOW + ENTRY SYSTEM WITH 1" INSULATED GLAZING. REFER TO DRAWING A3.2 FOR GLAZING LEGEND. REFER ALSO TO SPECIFICATION SECTION 08.41.13.
106-B	PRE-FINISHED ALUMINUM 2-PIECE SNIP ON INTERIOR TRIM WITH CONDENSED FASTENERS BY STORE FRONT MANUFACTURER.
106-C	PRE-FINISHED THERMALLY BROKEN ALUMINUM WINDOW WITH 1" INSULATED GLAZING. MFR PROVIDED ANCHOR STRAPS, WINDOW SUB-SILL + SILL PANS, LIPSESS SNIP-TIGHT RECEIVER SYSTEM, AND INSERT SCREENS. PROVIDE A 3/8" SNIP ON INTERIOR PERIMETER TRIM AT JAMBS, HEAD + SILL. PRE-FINISHED TO MATCH WINDOW FRAMES + FULLY CONDENSED FASTENERS. REFER TO DRAWING A3.1 FOR WINDOW CONFIGURATION + GLAZING LEGEND. ALL OPERABLE UNITS SHALL BE FULLY ACCESSIBLE AS PER SPECIFICATION SECTION 08.51.13. WINDOWS SHALL BE PRE-FINISHED IN CUSTOM COLOR AS PER SELECTION AND APPROVAL BY ADR.
106-D	SOLID SURFACE SILL, 1/2" THICK, RADIUS ALL ENDS TO ELIMINATE SHARP EDGES. PROVIDE BACKER ROD AND SEALANT AT ALL JOINTS TO ADJACENT GWB AND WINDOW ASSEMBLY.
106-E	PRE-FINISHED ALUMINUM LOUVERS, 6" DEEP, WITH INSET SCREENS. OPENINGS SHALL MEET PERFORMANCE REQUIREMENTS AS SCHEDULED ON MECHANICAL DRAWINGS. LOUVERS SHALL BE PRE-FINISHED IN CUSTOM COLOR AS PER SELECTION AND APPROVAL BY ADR. REFER ALSO TO SPECIFICATION SECTION 08.91.00.
106-F	SHIMS AND FIRE-TREATED BLOCKING.
106-G	CONTINUOUS EXTERIOR BACKER ROD AND SEALANT AT FULL PERIMETER OF MASONRY OPENING ASSEMBLY. CONTRACTOR SHALL COORDINATE LOCATION OF AIR AND VAPOR BARRIER TRANSITION TO BACKER ROD AND SEALANT SO AS TO ENSURE FULL CONTINUITY OF WEATHERING LINE AT ALL OPENINGS. CONTRACTOR SHALL COORDINATE FULL COMPATIBILITY OF SEALANT WITH ALL ADJACENT MATERIALS. SEALANT SHALL BE CUSTOM COLOR TO MATCH ADJACENT FINISHES AND PER SELECTION AND APPROVAL BY ADR. REFER ALSO TO SPECIFICATION SECTION 07.02.00.
106-H	CONTINUOUS INTERIOR BACKER ROD AND SEALANT AT FULL PERIMETER OF MASONRY OPENING ASSEMBLY AT INTERIOR SNIP ON INTERIOR TRIM LOCATIONS. CONTRACTOR SHALL PROVIDE AN ADDITIONAL LINE OF SEALANT BETWEEN TRIM AND ADJACENT FINISH. TYP. REFER ALSO TO SPECIFICATION SECTION 07.02.00.
106-I	PRE-FINISHED THERMALLY BROKEN ALUMINUM STORE FRONT HEAD RECEPTOR. REFER TO SPECIFICATION SECTION 08.41.13.
106-K	PRE-FINISHED THERMALLY BROKEN ALUMINUM WINDOW WITH 1" INSULATED GLAZING. MFR PROVIDED ANCHOR STRAPS, WINDOW SUB-SILL + SILL PANS, LIPSESS SNIP-TIGHT RECEIVER SYSTEM, AND INSERT SCREENS. PROVIDE A 3/8" SNIP ON INTERIOR PERIMETER TRIM AT JAMBS, HEAD + SILL. PRE-FINISHED TO MATCH WINDOW FRAMES + FULLY CONDENSED FASTENERS. REFER TO DRAWING A3.1 FOR WINDOW CONFIGURATION + GLAZING LEGEND. ALL OPERABLE UNITS SHALL BE FULLY ACCESSIBLE AS PER SPECIFICATION SECTION 08.51.13. WINDOWS SHALL BE PRE-FINISHED IN CUSTOM COLOR AS PER SELECTION AND APPROVAL BY ADR.
106-L	FIBERGLASS REINFORCED POLYESTER ENTRY DOORS. REFER TO SPECIFICATION SECTION 08.15.00 WITH INSUL. GLAZING. REFER TO GLAZING SCHEDULE ON SHEET A3.2 AND DOOR SCHEDULE ON A3.2. ALUM. DOOR FRAME WITH THERMALLY BROKEN FINISHES BY ALUM. FRAMED ENTRANCE AND FRAMING SYSTEM MANUFACTURER. REFER TO SPECIFICATION 08.41.13; PERIMETER GAUGH.
107-A	VINYL TILE. REFER TO FINISH PLANS AND SPECIFICATION SECTION 09.60.20 FOR COLORS, PATTERNS AND TYPES, AND ADDITIONAL INSTALLATION DETAILS.
107-B	CERAMIC TILE. REFER TO FINISH PLANS AND SPECIFICATION SECTION 09.30.00 FOR COLORS, PATTERNS AND TYPES, AND ADDITIONAL INSTALLATION DETAILS.
107-C	STAIR TREADS + RISERS. REFER TO FINISH PLANS AND SPECIFICATION SECTION 09.60.30 FOR COLORS, PATTERNS AND TYPES, AND ADDITIONAL INSTALLATION DETAILS.
107-D	CONCRETE TILE. REFER TO FINISH PLANS AND SPECIFICATION SECTION 09.60.13 FOR COLORS, PATTERNS AND TYPES, AND ADDITIONAL INSTALLATION DETAILS.

107-F	EPOXY FLOOR COATING. REFER TO FINISH PLANS AND SPECIFICATION SECTION 09.97.24 FOR ADDITIONAL DETAILS.
107-G	TRELLAGE (GREEN WALL). REFER TO SPECIFICATION SECTION 10.02.00. REFER TO DETAIL SAK.6 FOR TYPICAL MOUNTING.
107-H	PLUMBING. REFER TO PLUMBING DRAWINGS.
107-J	4" VINYL BASE. ADHERE DIRECTLY TO FINISHED WALL SURFACE. REFER TO FINISH PLANS AND SPECIFICATION SECTION 09.13.00 FOR COLORS, TYPES, AND ADDITIONAL INSTALLATION DETAILS.
107-K	ACoustical PANEL CEILING. REFER TO REFLECTED CEILING PLANS FOR INSTALLATION ELEVATIONS, TILE SIZES AND ORIENTATIONS. REFER TO REFLECTED CEILING PLANS AND MEP/FP DRAWINGS FOR LOCATIONS OF LIGHTING FIXTURES, MECHANICAL DIFFUSERS, SPRINKLER HEADS AND SIMILAR DEVICES AND FIXTURES TO BE COORDINATED WITH CEILING GRID LAYOUT. REFER TO SPECIFICATION SECTION 09.13.13.
107-L	SUSPENDED CYLINDRICAL CEILING, TAPED AND SANDED WITH JOINT COMPOUND, PRIME AND PAINTED FINISH (TYP. U.N.O.). REFER TO RISERS AND MEP/FP DRAWINGS FOR INSTALLATION ELEVATIONS AND LAYOUT OF MECHANICAL DIFFUSERS, SPRINKLER HEADS, LIGHTING AND OTHER ELECTRICAL FIXTURES, AND SIMILAR DEVICES AND FIXTURES. REFER TO SPECIFICATION SECTION 09.13.13.
107-M	MECHANICAL EQUIPMENT. REFER TO MECHANICAL DRAWINGS.
107-N	ACoustical FABRIC-WRAPPED PANELS. COLOR SHALL BE AS PER SELECTION AND APPROVAL BY ADR OR REFER TO SPECIFICATION SECTION 09.13.23.
107-O	SOLID SURFACE WALL PANELS + WALL BASE, 1/2" MATERIAL. REFER TO SPECIFICATION SECTION 09.60.60.00 FOR LIGHT GAUGE METAL FRAMING AT 1/4" O.C. MAX. REFER TO PARTITION TAGS ON ALL FLOOR PLANS AND PARTITION TYPE SPECIFICATION SECTION 09.22.16 FOR OTHER REQUIREMENTS.
107-R	ROLLER SHADE WITH FULL LENGTH CONTINUOUS PREFINISHED METAL FASCIA MOUNTED WITH FINISHED WINDOW OPENING. REFER TO SPECIFICATION SECTION 12.24.13. PROVIDE ONE PER VERTICAL GLAZED WINDOW UNITS. ALSO REFER TO ELECTRICAL DRAWINGS FOR LOCATIONS OF AUTOMATIC OPERATED UNITS.
107-S	ORNAMENTAL FENCE. SEE ARCHITECTURAL SITE DRAWINGS.
107-T	6" x 6" x 10" INTERIOR GYPSUM WALL BOARD. TAPE + PAINTED FINISH. PROVIDE TAPE LAYERS AS SHOWN IN DETAIL AND AS REQUIRED TO CONTRACT W/ WALL ASSEMBLIES AS TAGGED ON FLOOR PLANS (AT SERIES DRAWINGS) AND DETAILED ON SHEET A3.1 WITH WALL ASSEMBLY. FIRE RATINGS AS NOTED ON G2 SERIES DRAWINGS. PROVIDE CONTINUOUS J-BEAD CONTINUOUS BACER POD + SEALANT AT TOP, BOTTOM, AND ALL TERMINATIONS. WEARING LAYER SHALL BE MOISTURE AND ABUSE-RESISTANT GYPSUM IN ALL EXPOSED AREAS TO A HEIGHT OF 8'-0" A.F.F. EA. FLR.
107-U	MECHANICAL DIFFUSERS. REFER TO MECHANICAL DRAWINGS.
107-V	HIGH STRENGTH CORNER BEAD TO BE USED BY SEFT FORME OR APPROVAL EQUAL. PROVIDE HIGH-STRENGTH CORNERS ON ALL EXPOSED OUTSIDE WALL CORNERS.
107-W	ELECTRICAL FIXTURES. REFER TO ELECTRICAL DRAWINGS. FIXTURES + INSTALLATION SHOWN DIAGRAMMATICALLY ONLY.
107-X	CLOSE THE VOID BETWEEN PARTITION AND UNDERSIDE OF DECK WITH MINERAL WOOL (SAFING INSULATION) AND FIRE BARRIER SEALANT WITH AN 1-HOUR RATING U.L. APPROVED SYSTEM.



Minnie Mars Jamieson Elementary School Annex & Renovation
5500 North Mozart Street
Chicago, IL 60646

Chicago Public Schools
CITY OF CHICAGO, MAYOR RAHM EMANUEL

Architect of Record:
ARCHITRAVE LTD.

ARCHITRAVE

ADDRESS: 1128 W. Chicago Avenue
2nd Floor
Chicago, IL 60642
PHONE: 312.642.2600
FAX: 312.642.6916
WEB: www.architraveltd.com

KJWW
Chicago, IL
Structural & MEP/FP Engineers

TERRA ENGINEERING LTD.
Chicago, IL
Civil Eng. & Landscape Architects

SHINER + ASSOCIATES
Chicago, IL
Acoustics Consultant

EDGE CONSULTANTS, INC.
Addison, IL
Food Service Consultant

HJ KESSLER ASSOCIATES
Chicago, IL
LEED Consultant

ILLINOIS ROOF CONSULTING ASSOC.
McHenry, IL
Roof Consultant

AECOM
Chicago, IL
Owner Environmental Consultant

UNITED ANALYTICAL SERVICES
Downers Grove, IL
Owner Interior Environmental Consultant

Issuance	Mark	Description	Date
1	1	ISSUE FOR PERMIT	04/17/2015
2	2	ISSUE FOR BID	04/22/2015
3	3	ADDENDUM A1	05/08/2015
4	4	ADDENDUM A3	05/19/2015

PBC Project Name: Minnie Mars Jamieson Elementary School Annex & Renovation
PBC Contract No.: P52040
Project No.: 05760

Title: ENLARGED PLAN KEYNOTES AND TYPICAL CONSTRUCTION

Sheet: **A6.0**