


# INFORMATION

---

## APPLICANTS

PBC: —  
ALDERMAN: SANDI JACKSON  
INSTITUTIONAL PD# —

## ZONING

EXISTING ZONING: IPD — INSTITUTION PLAN DEVELOPMENT   
MAX BLDG. HEIGHT: 60 FEET  
MIN REQ'D SETBACKS: —  
MAX % SITE COVER: —  
FLOOR AREA RATIO: 1.1  
GROSS SITE AREA: 106,044 SF (2.43 AC)  
NET SITE AREA: 130,354 SF  
PUBLIC R.O.W. AREA: —  
AREA OF VACATION: —

## PROJECT INFORMATION

BUILDING AREA: 104,486 SF  
STUDENTS 900  
MIN OFF STREET  
PARKING 30  
H.C. PARKING 2

## SURVEY

EXISTING SURVEY: TECMA INC.  
DATE: 10.10.06  
CONSOLIDATED SURVEY —  
WITH UTILITIES: —  
ENVIRONMENTAL: —  
PHASE I: —  
PHASE II: —



**POWELL REPLACEMENT  
ELEMENTARY SCHOOL**  
7511 S. SHORE DRIVE  
CHICAGO, IL 60649



**InterActive Design**

308 W. Erie Street, Suite 506  
Chicago, Illinois 60654  
P: 312-482-8866 F: 312-482-9904

DATE: 04/16/09

SHEET  
REFERENCE: G1.1

SKETCH  
NUMBER: ASK-001

General Building Requirements per Chicago Zoning Ordinance (CZO) 2007 Edition and Chicago Building Code (CBC) 2008 Edition

Project Name: Powell Elementary School

Project Address: 7511 S. Shore Drive, Chicago, IL

Updated: March 27, 2008

ITEM	ISSUE	CHAPTER/ARTICLE	Ordinance Requirements	Actual	Requirement	Location/ SHT #	Agency/ Test #	Rem
<b>ZONING REQUIREMENTS</b>								
1.01	Zoning District:		DNA					
1.02	Lot Area:		DNA					
1.03	Maximum Floor Area Ratio:		DNA					
	a. Allowable Floor Area:		DNA					
1.04	Total Building Area:							
	Actual Site Area:		0	104,695 S.F.				
1.05	Building Height: No. of Floors	8.6A-1.4		105,987.28 S.F.				
1.06	Minimum Yards:		DNA	54'-8" / 3				
	a. Front		DNA	22'-5"				
	b. Side		DNA	25'-11 3/4" / 158'-3 3/4"				
	c. Rear		DNA	33'-11 1/4"				
1.07	Grade Elevation:		DNA	10.2 C.C.D.				SEE
1.08	Off Street Loading:	8.10-4	DNA					
1.09	Off Street Parking:	8.11	DNA	30				
	a. Calculation:	8.11-2.2	DNA					
	b. Size:	8.11(4)	8' X 19'	8' X 19'				

IPD - INSTITUTION PLAN DEVELOPMENT

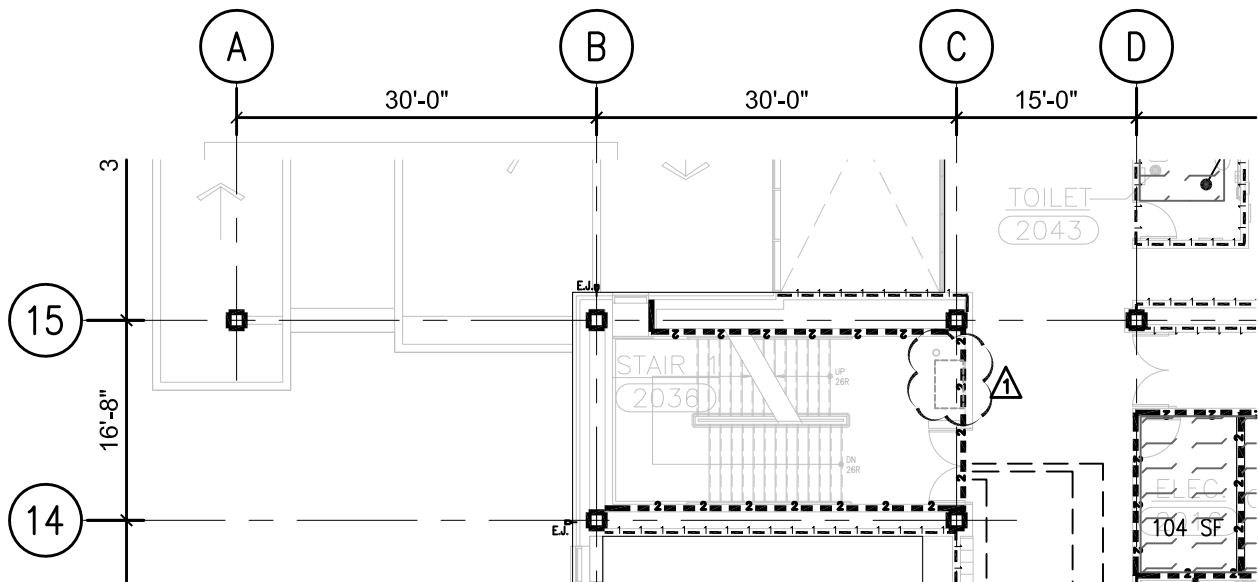


**POWELL REPLACEMENT  
ELEMENTARY SCHOOL**  
7511 S. SHORE DRIVE  
CHICAGO, IL 60649



**Interactive Design**  
308 W. Erie Street, Suite 606  
Chicago, Illinois 60654  
P: 312-482-8888 F: 312-482-9904

DATE: 04/16/09  
SHEET REFERENCE: G2.1  
SKETCH NUMBER: ASK-002



2
G2.2
**SECOND FLOOR**  
 1/16" = 1'-0"

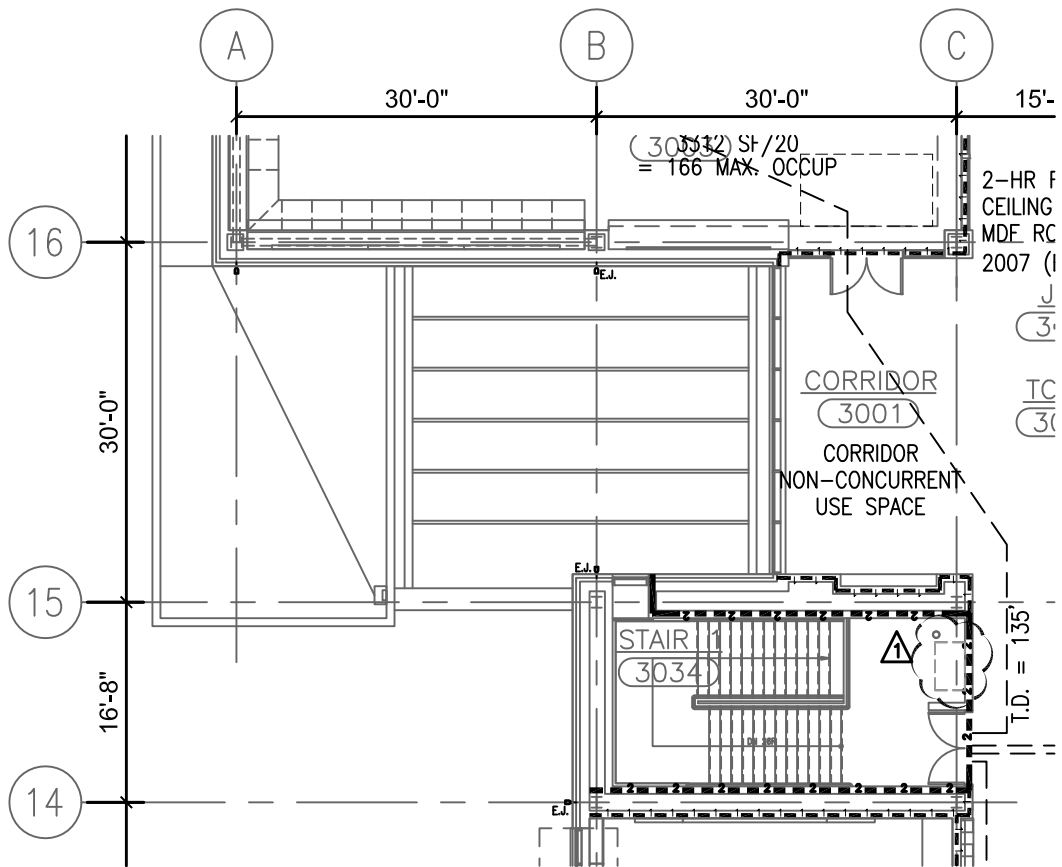


**POWELL REPLACEMENT  
 ELEMENTARY SCHOOL**  
 7511 S. SHORE DRIVE  
 CHICAGO, IL 60649



**InterActive Design**  
 308 W. Erie Street, Suite 506  
 Chicago, Illinois 60654  
 P: 312-482-8866 F: 312-482-9904

DATE: 04/16/09  
 SHEET REFERENCE: G2.2  
 SKETCH NUMBER: **ASK-003**



1 THIRD FLOOR  
G2.3 1/16" = 1'-0"

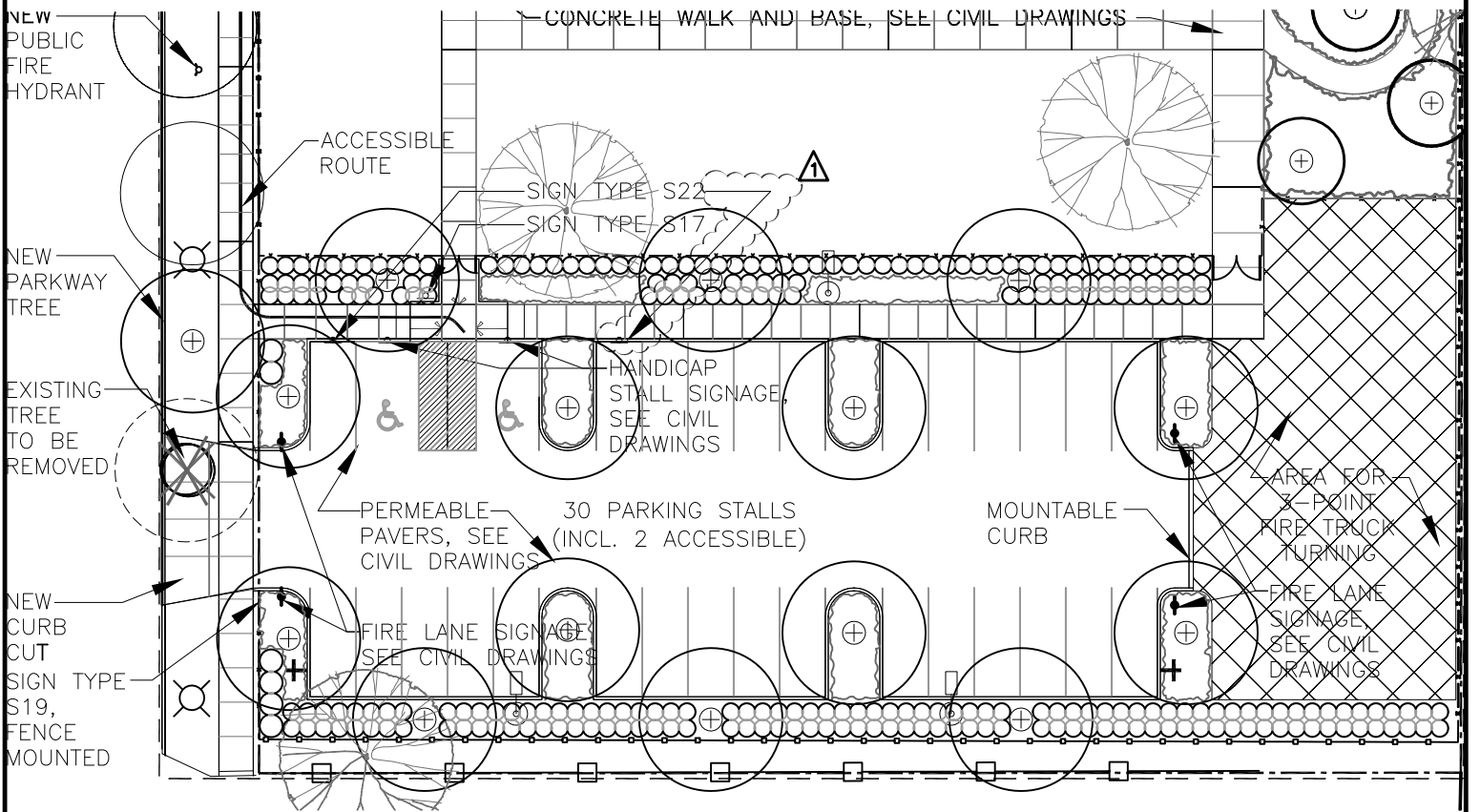
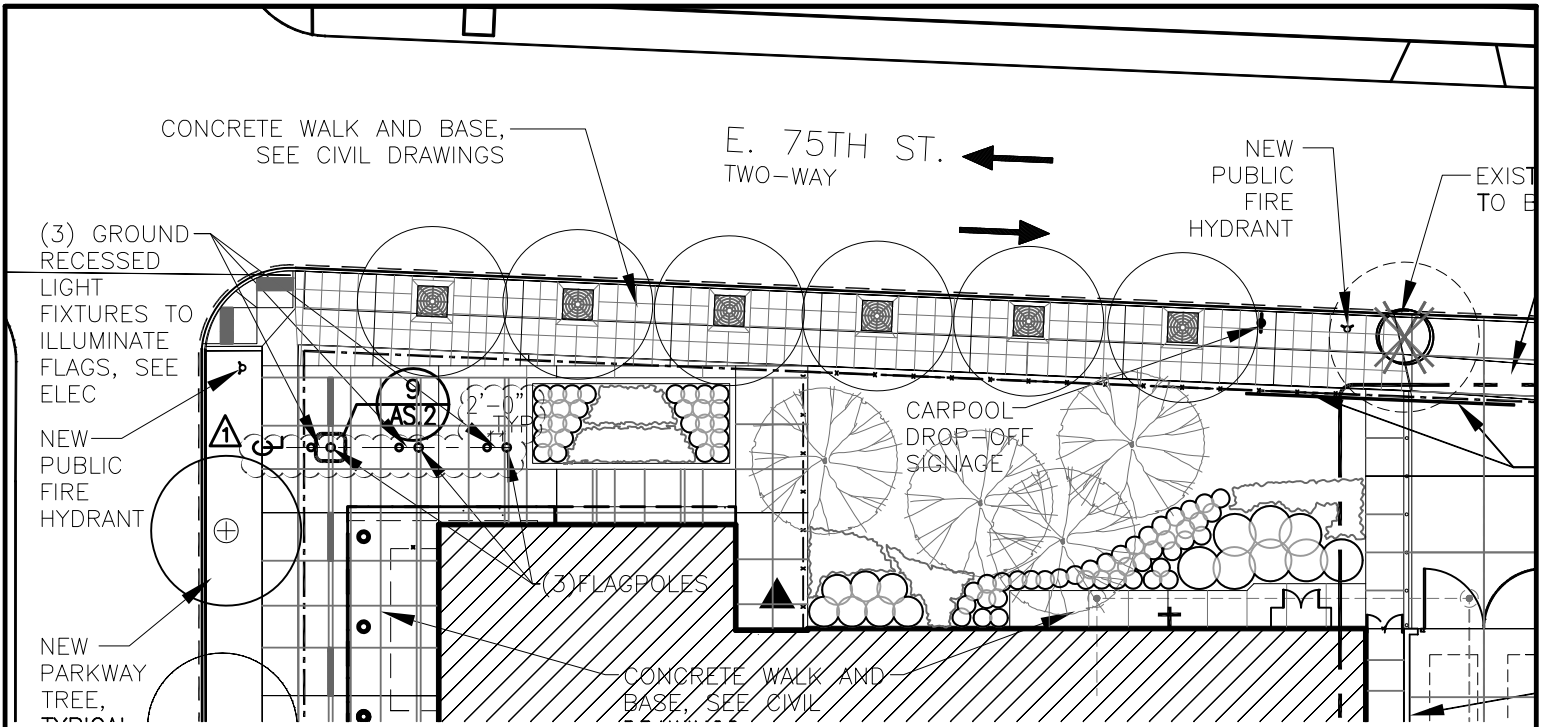


**POWELL REPLACEMENT  
ELEMENTARY SCHOOL**  
7511 S. SHORE DRIVE  
CHICAGO, IL 60649



**InterActive Design**  
308 W. Erie Street, Suite 506  
Chicago, Illinois 60654  
P: 312-482-8866 F: 312-482-9904

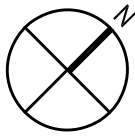
DATE: 04/16/09  
SHEET REFERENCE: G2.3  
SKETCH NUMBER: ASK-004



1  
AS.1

# SITE PLAN

1/32" = 1'-0"



**POWELL REPLACEMENT  
ELEMENTARY SCHOOL**  
7511 S. SHORE DRIVE  
CHICAGO, IL 60649

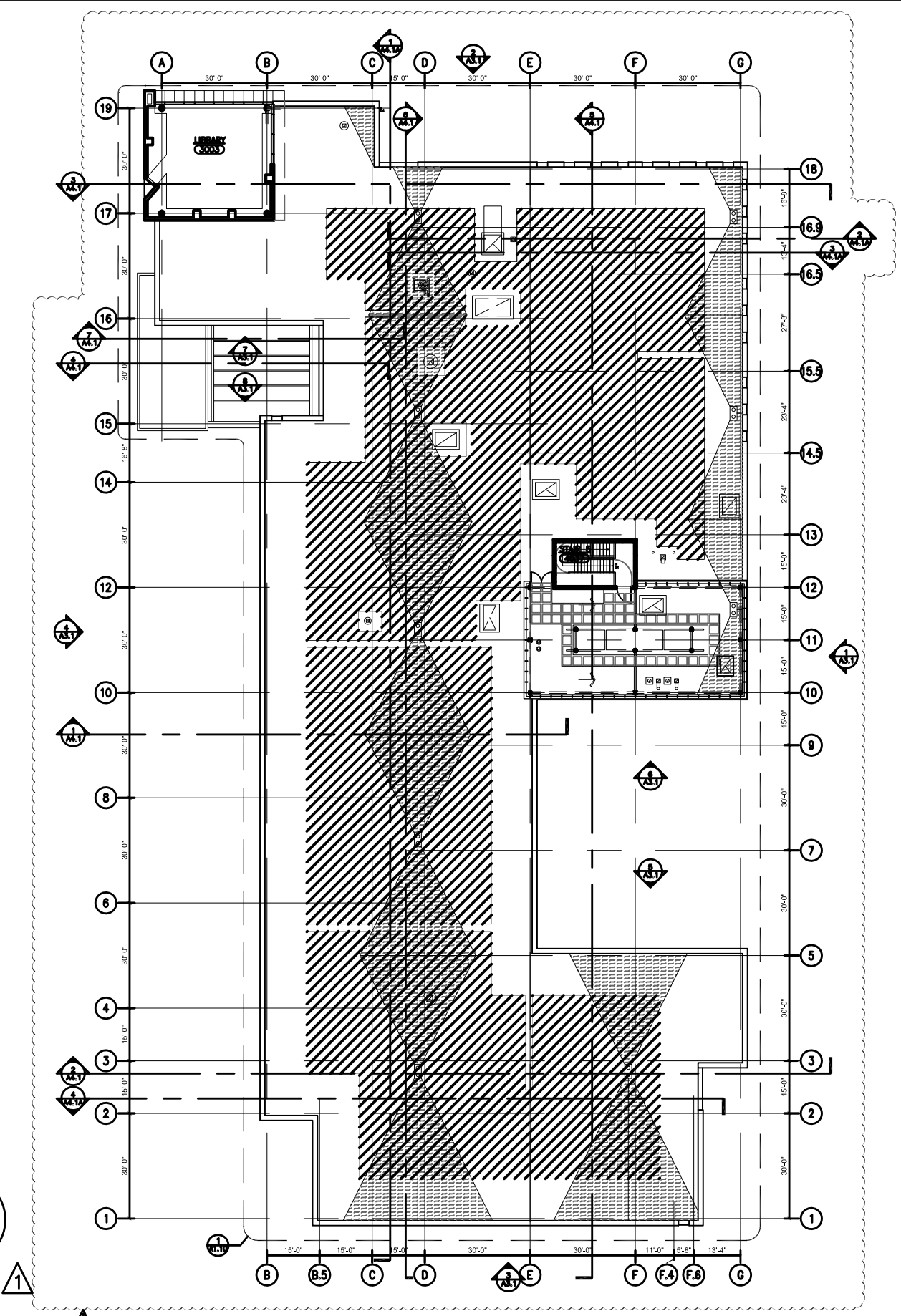


**InterActive Design**  
308 W. Erie Street, Suite 506  
Chicago, Illinois 60654  
P: 312-482-8866 F: 312-482-9904

DATE: 04/16/09  
SHEET REFERENCE: AS.1  
SKETCH NUMBER: ASK-005

# FOURTH FLOOR ROOF PLAN

2  
A1.2

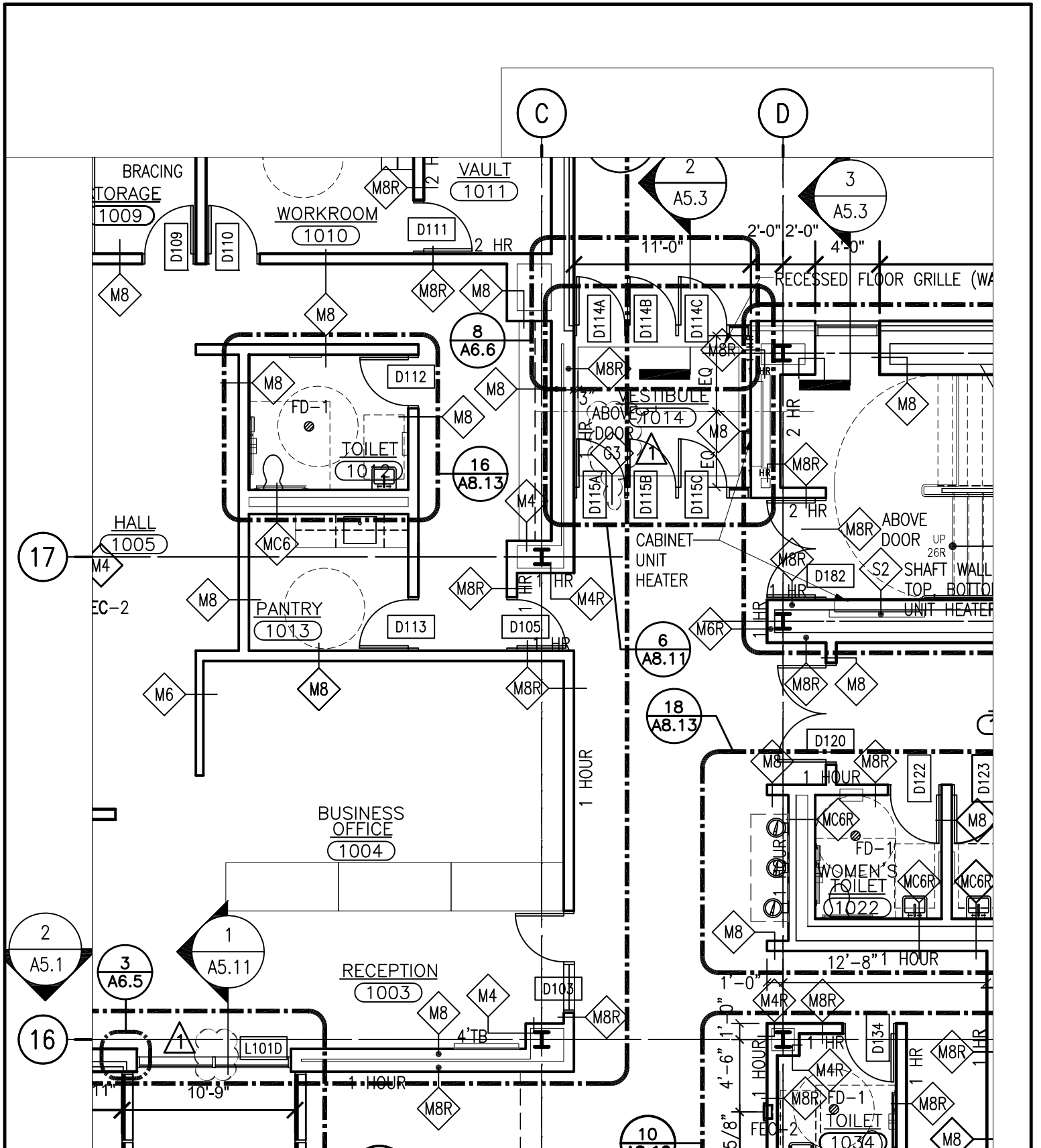


**POWELL REPLACEMENT  
ELEMENTARY SCHOOL**  
7511 S. SHORE DRIVE  
CHICAGO, IL 60649

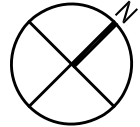


**InterActive Design**  
308 W. Erie Street, Suite 506  
Chicago, Illinois 60654  
P: 312-482-8866 F: 312-482-9904

**DATE:** 04/16/09  
**SHEET REFERENCE:** A1.2  
**SKETCH NUMBER:** ASK-006



1 PARTIAL FIRST FLOOR PLAN  
 A1.3 1/8" = 1'-0"

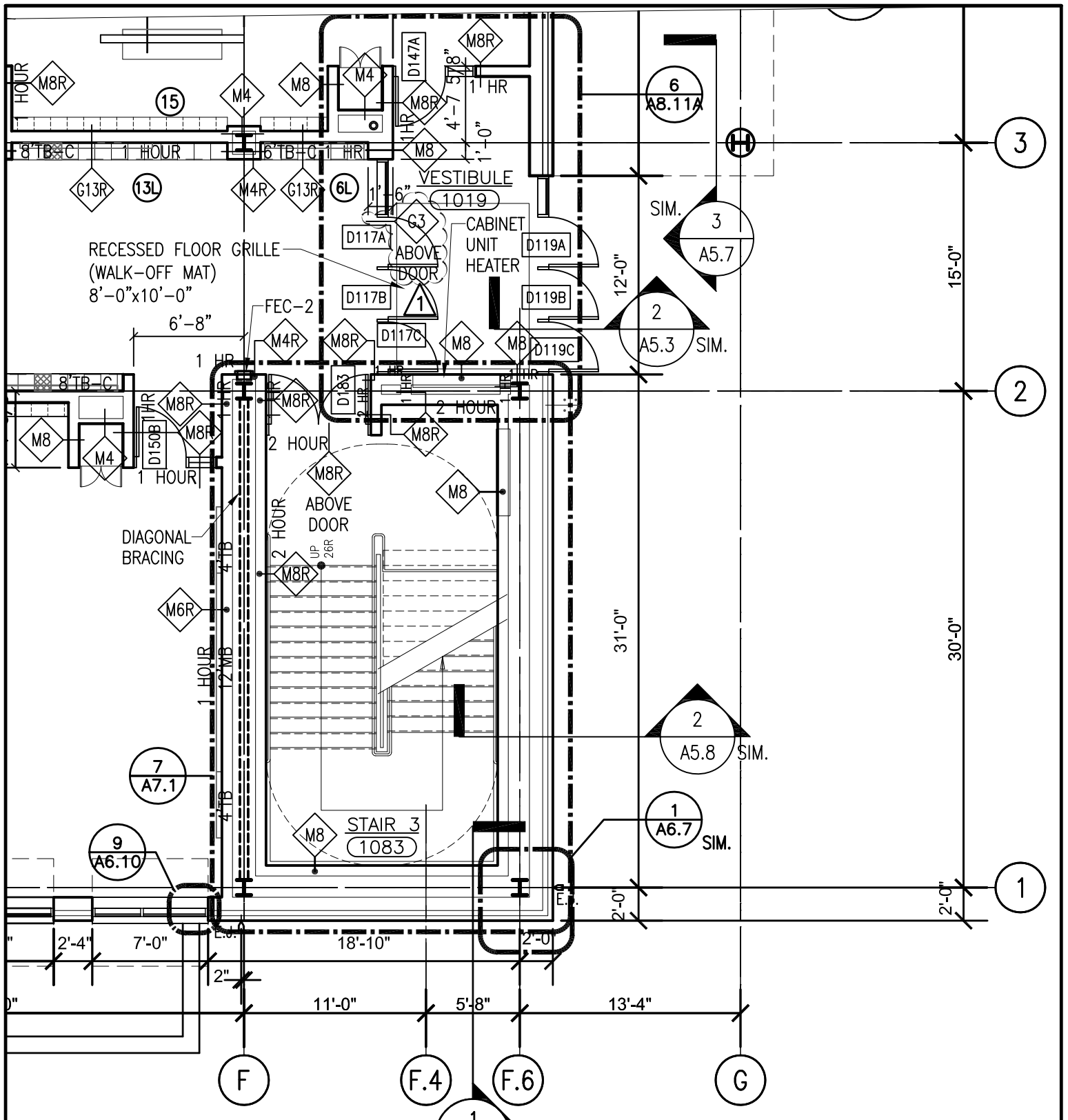


**POWELL REPLACEMENT  
 ELEMENTARY SCHOOL**  
 7511 S. SHORE DRIVE  
 CHICAGO, IL 60649



**InterActive Design**  
 308 W. Erie Street, Suite 506  
 Chicago, Illinois 60654  
 P: 312-482-8866 F: 312-482-9904

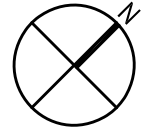
**DATE:** 04/16/09  
**SHEET REFERENCE:** A1.3  
**SKETCH NUMBER:** ASK-007



1  
A1.4

# PARTIAL FIRST FLOOR PLAN

1/8" = 1'-0"



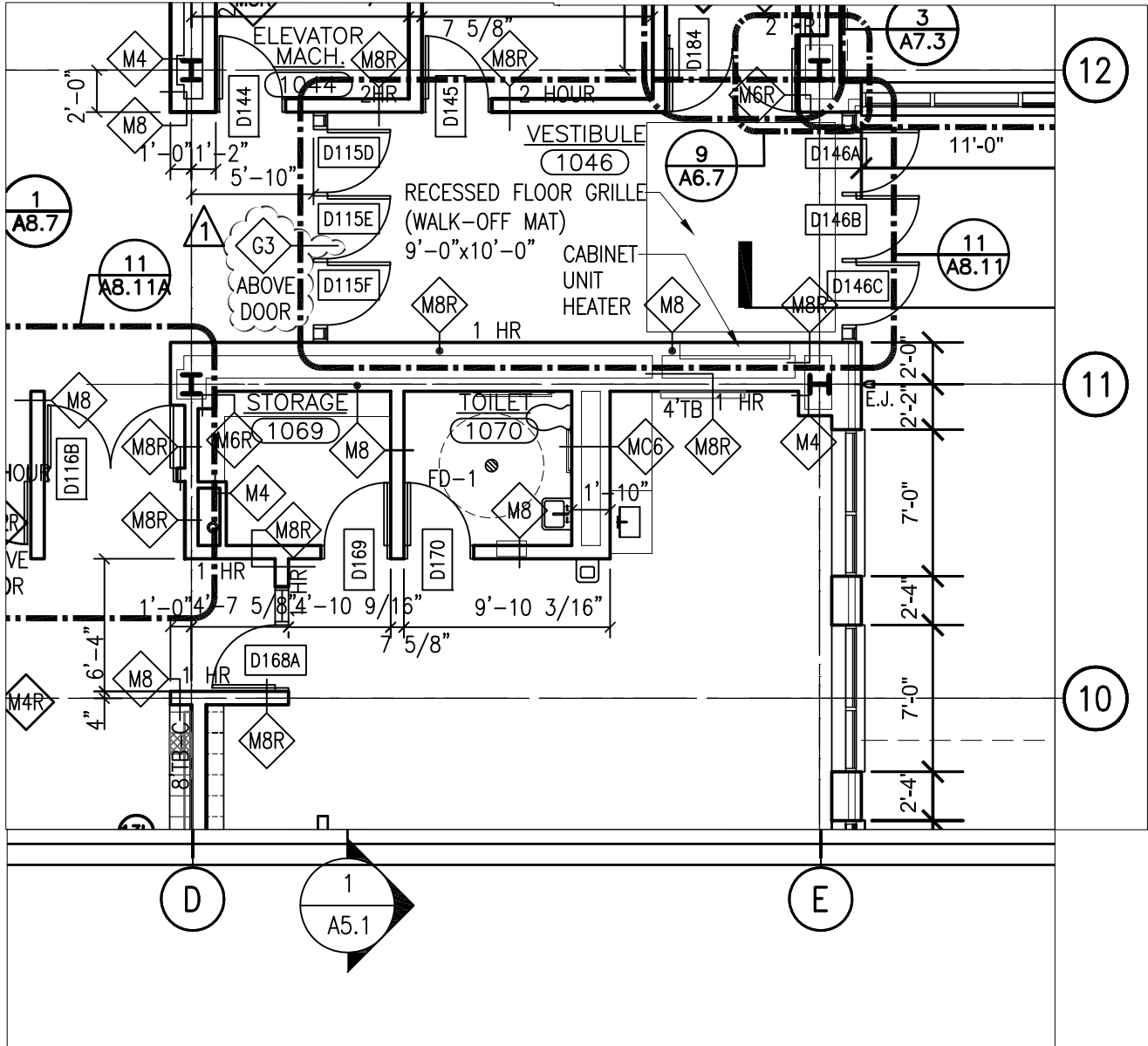
**POWELL REPLACEMENT  
ELEMENTARY SCHOOL**  
7511 S. SHORE DRIVE  
CHICAGO, IL 60649



**InterActive Design**  
308 W. Erie Street, Suite 506  
Chicago, Illinois 60654  
P: 312-482-8866 F: 312-482-9904

DATE: 04/16/09  
SHEET REFERENCE: A1.4  
SKETCH NUMBER: ASK-008

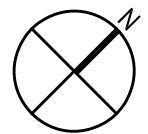




1  
A1.4

# PARTIAL FIRST FLOOR PLAN

1/8" = 1'-0"



## POWELL REPLACEMENT ELEMENTARY SCHOOL

7511 S. SHORE DRIVE  
CHICAGO, IL 60649



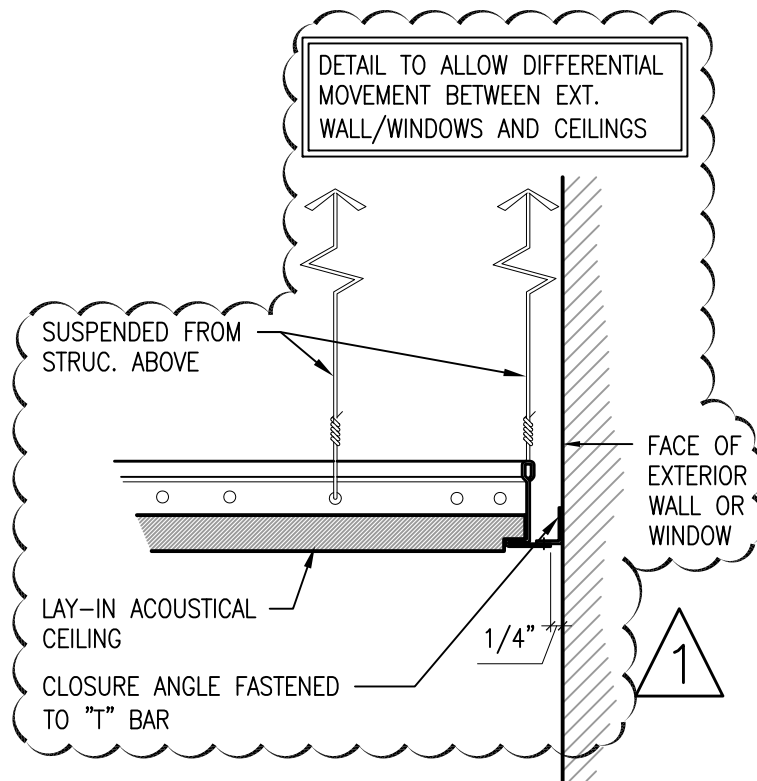
### InterActive Design

308 W. Erie Street, Suite 506  
Chicago, Illinois 60654  
P: 312-482-8866 F: 312-482-9904

DATE: 04/16/09

SHEET  
REFERENCE: A1.4

SKETCH  
NUMBER: ASK-009



13  
A2.3

**CLNG. @ PERIMETER WALL**

3" = 1'-0"



**POWELL REPLACEMENT  
ELEMENTARY SCHOOL**  
7511 S. SHORE DRIVE  
CHICAGO, IL 60649



**InterActive Design**  
308 W. Erie Street, Suite 506  
Chicago, Illinois 60654  
P: 312-482-8866 F: 312-482-9904

DATE: 04/16/09  
SHEET REFERENCE: A2.3  
SKETCH NUMBER: ASK-010