

1 PARTIAL FIRST FLOOR REFLECTED CEILING PLAN
 A2.4 1/8" = 1'-0"

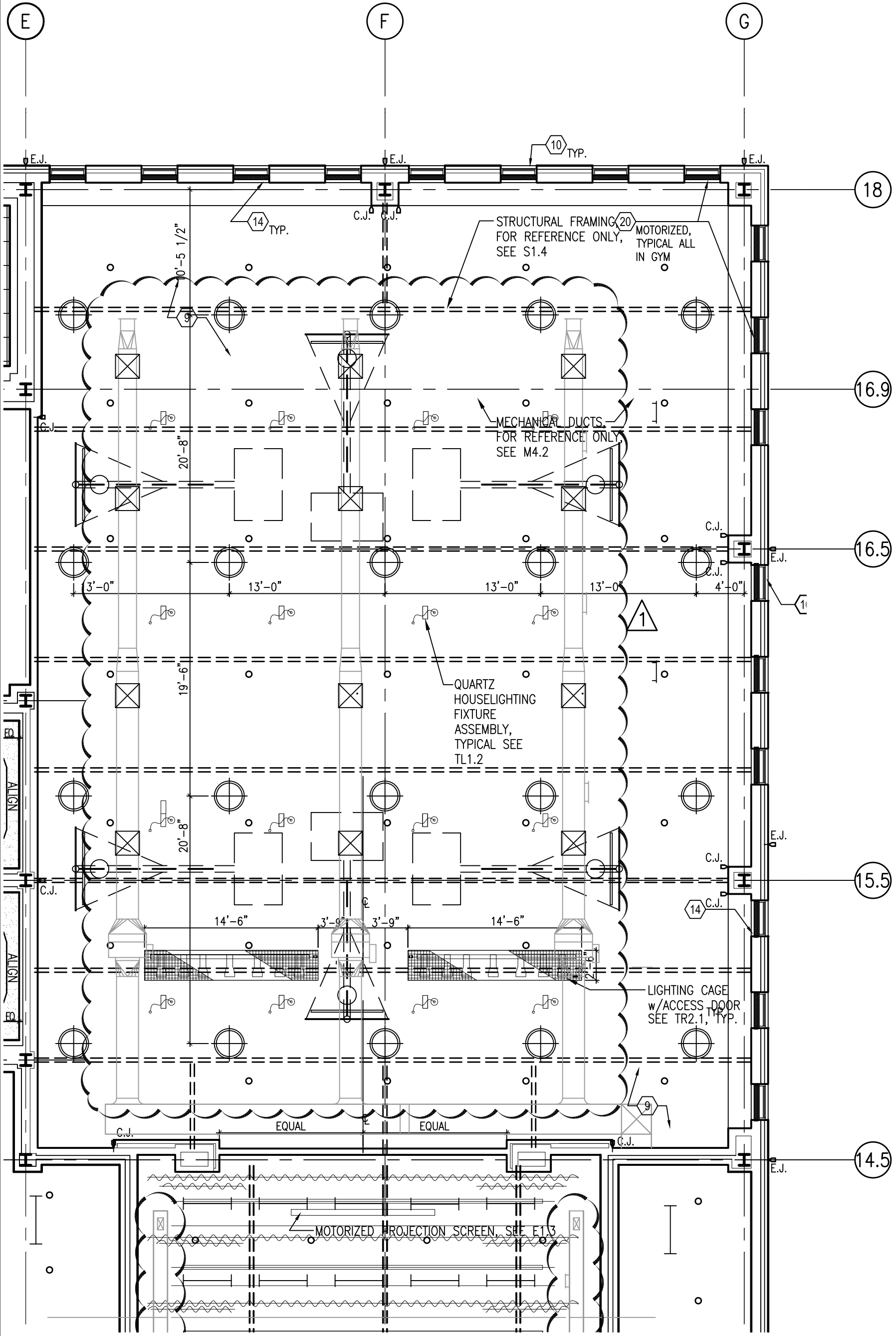


**POWELL REPLACEMENT
 ELEMENTARY SCHOOL**
 7511 S. SHORE DRIVE
 CHICAGO, IL 60649



InterActive Design
 308 W. Erie Street, Suite 506
 Chicago, Illinois 60654
 P: 312-482-8866 F: 312-482-9904

DATE: 04/16/09
 SHEET REFERENCE: A2.4
 SKETCH NUMBER: ASK-011



1 PARTIAL THIRD FLOOR RCP
 A2.7 1/8" = 1'-0"

14
A6.4

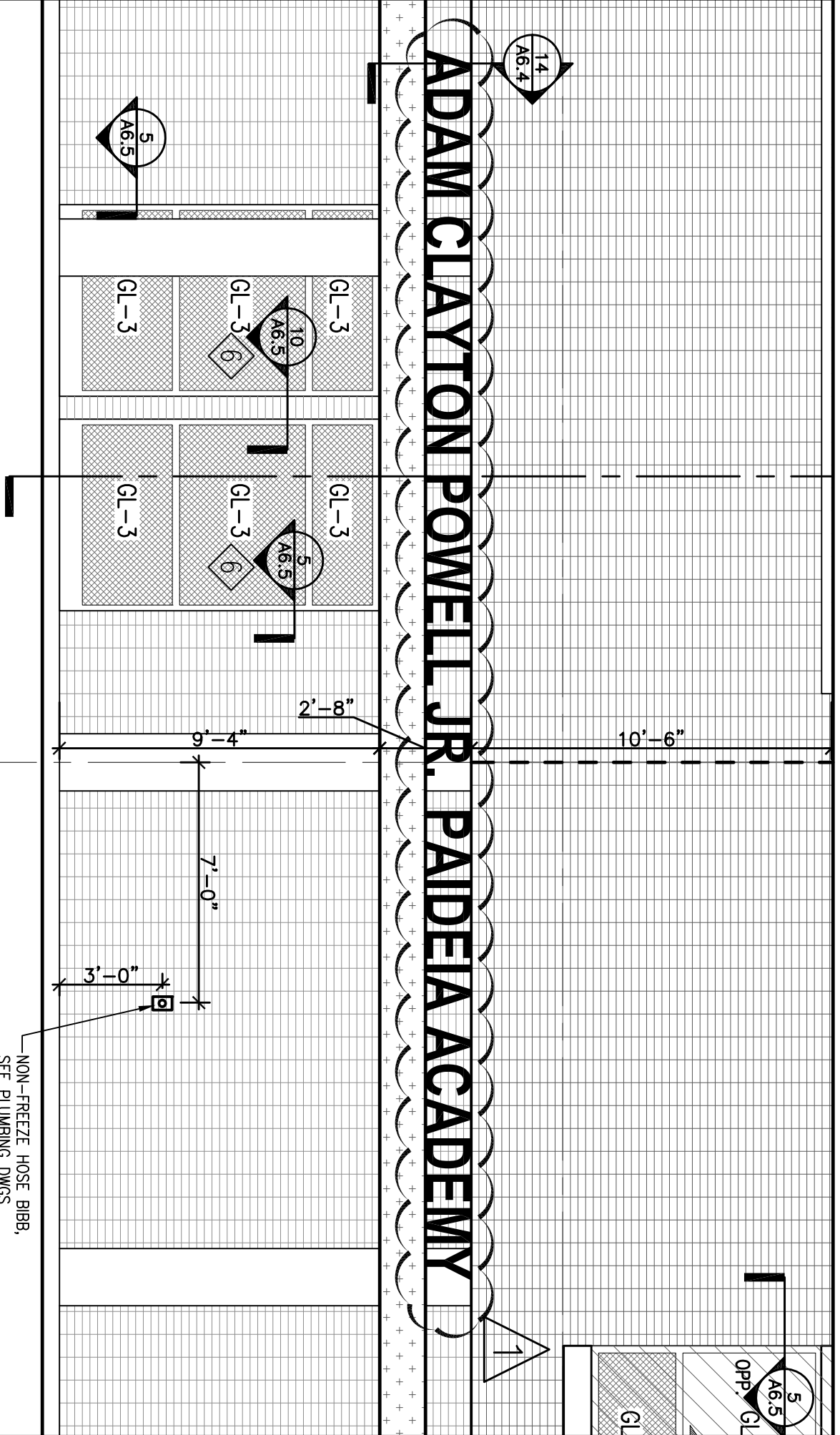
5
A6.5

10
A6.5
6

5
A6.5
6

5
A6.5
Opp. GL

ADAM CLAYTON POWELL JR. PAIDEIA ACADEMY



1 ENLARGED ELEVATION

1
A3.2

1/4" = 1'-0"

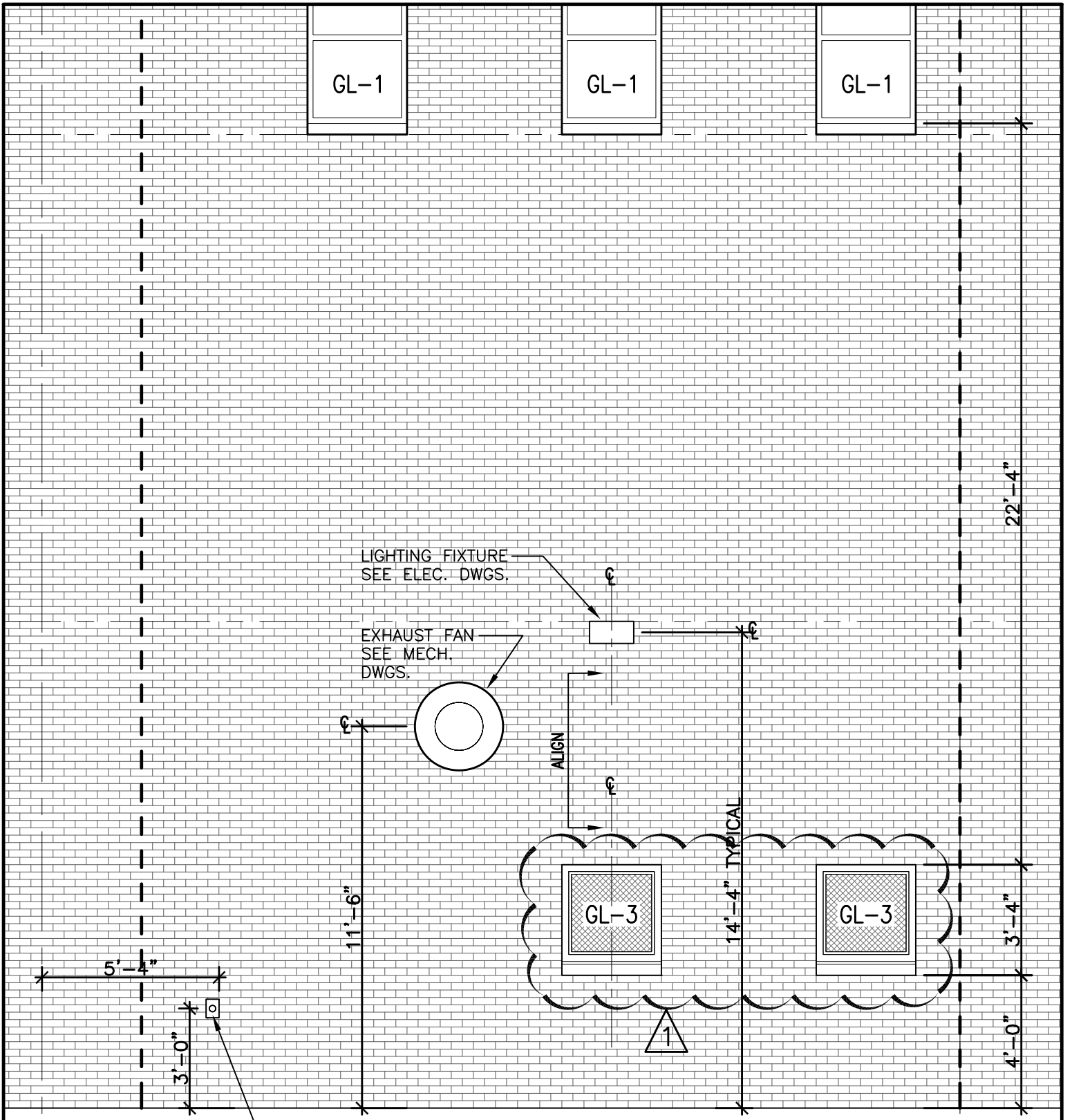


**POWELL REPLACEMENT
ELEMENTARY SCHOOL**
7511 S. SHORE DRIVE
CHICAGO, IL 60649



InterActive Design
308 W. Erie Street, Suite 506
Chicago, Illinois 60654
P: 312-482-9886 F: 312-482-9904

DATE: 04/16/09
SHEET REFERENCE: A3.2
SKETCH NUMBER: ASK-013



NON-FREEZE HOSE BIBB,
SEE PLUMBING DWGS.

4
A3.5

ENLARGED ELEVATION

1/4" = 1'-0"

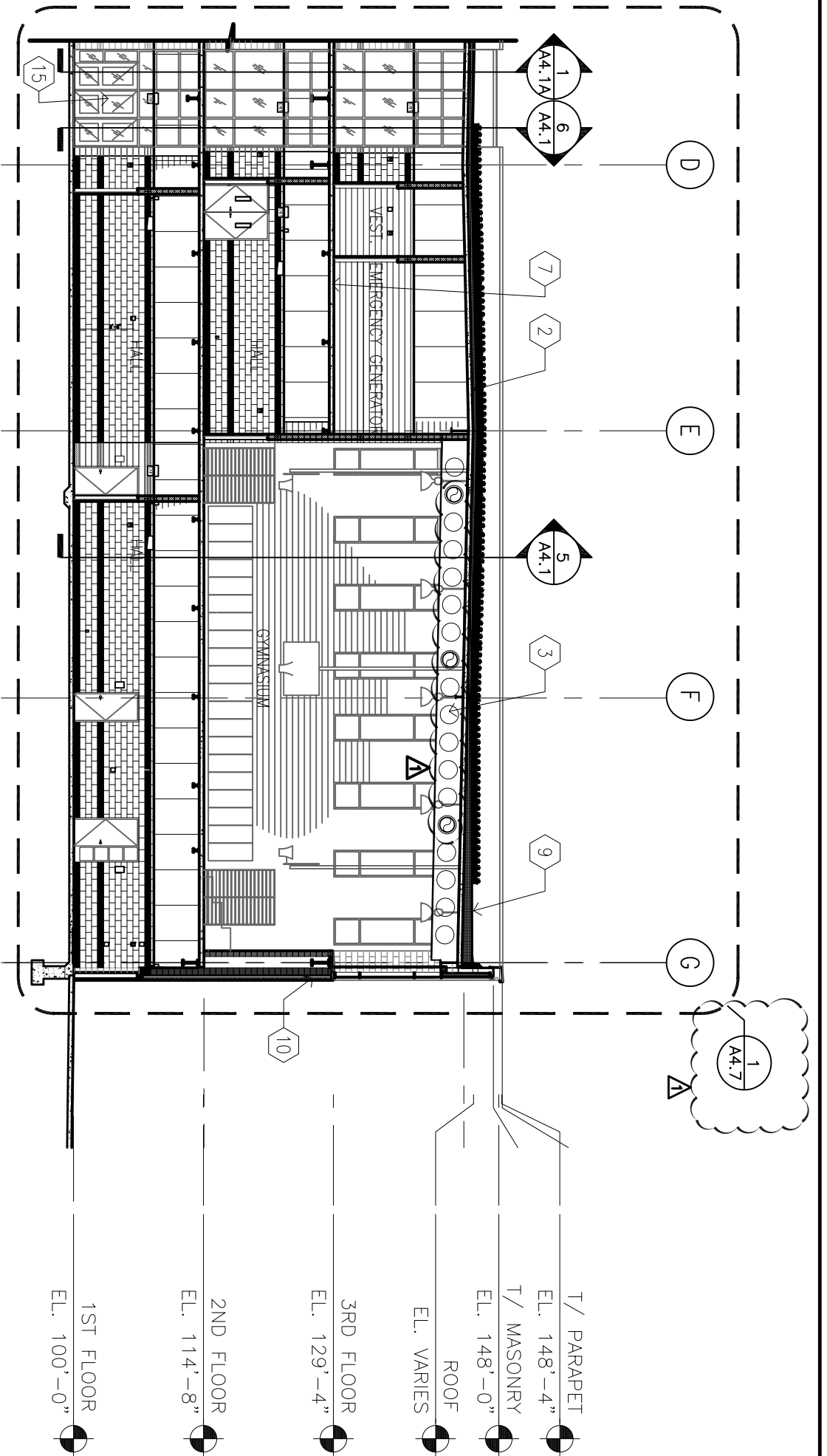


**POWELL REPLACEMENT
ELEMENTARY SCHOOL**
7511 S. SHORE DRIVE
CHICAGO, IL 60649



InterActive Design
308 W. Erie Street, Suite 506
Chicago, Illinois 60654
P: 312-482-8866 F: 312-482-9904

DATE: 04/16/09
SHEET REFERENCE: A3.5
SKETCH NUMBER: ASK-014



2 EAST/WEST BUILDING SECTION-LOOKING NORTH
 A4.1A 1/16" = 1'-0"

- T/ PARAPET
- EL. 148'-4"
- T/ MASONRY
- EL. 148'-0"
- ROOF
- EL. VARIES
- 3RD FLOOR
- EL. 129'-4"
- 2ND FLOOR
- EL. 114'-8"
- 1ST FLOOR
- EL. 100'-0"

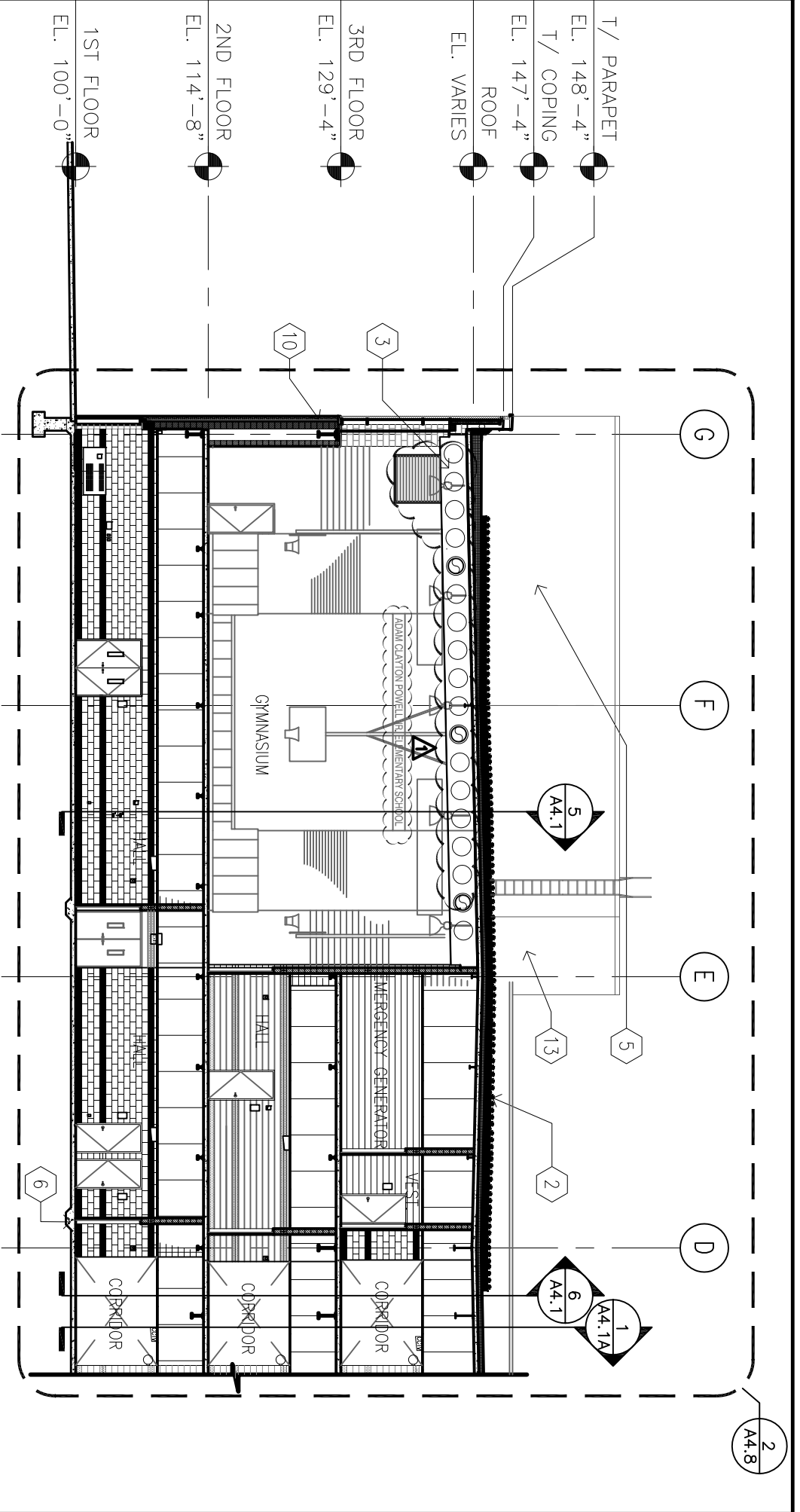


Chicago Public Schools

**POWELL REPLACEMENT
 ELEMENTARY SCHOOL**
 7511 S. SHORE DRIVE
 CHICAGO, IL 60649



InterActive Design DATE: 04/16/09
 308 W. Erie Street, Suite 506
 Chicago, Illinois 60654
 P: 312-482-9886 F: 312-482-9904
 SHEET REFERENCE: A4.1A
 SKETCH NUMBER: ASK-015



3 EAST/WEST BUILDING SECTION-LOOKING SOUTH
 A4.1A 1/16" = 1'-0"



**POWELL REPLACEMENT
 ELEMENTARY SCHOOL**
 7511 S. SHORE DRIVE
 CHICAGO, IL 60649



InterActive Design DATE: 04/16/09
 308 W. Erie Street, Suite 506
 Chicago, Illinois 60654
 P: 312-482-9886 F: 312-482-9904
 SHEET REFERENCE: A4.1A
 SKETCH NUMBER: ASK-016

3RD FLOOR
EL. 129'-4"

2ND FLOOR
EL. 114'-8"

1ST FLOOR
EL. 100'-0"

ANODIZED
ALUM. CURTAIN
WALL

18

17

G

E.L.

G

G

VESTIBULE 1014

EXIT

STAIRS

1
A6.3

DRINKING F
HEIGHTS

1
A4.4

N/S BLDG SECTION-LOOKING EAST

3/16" = 1'-0"

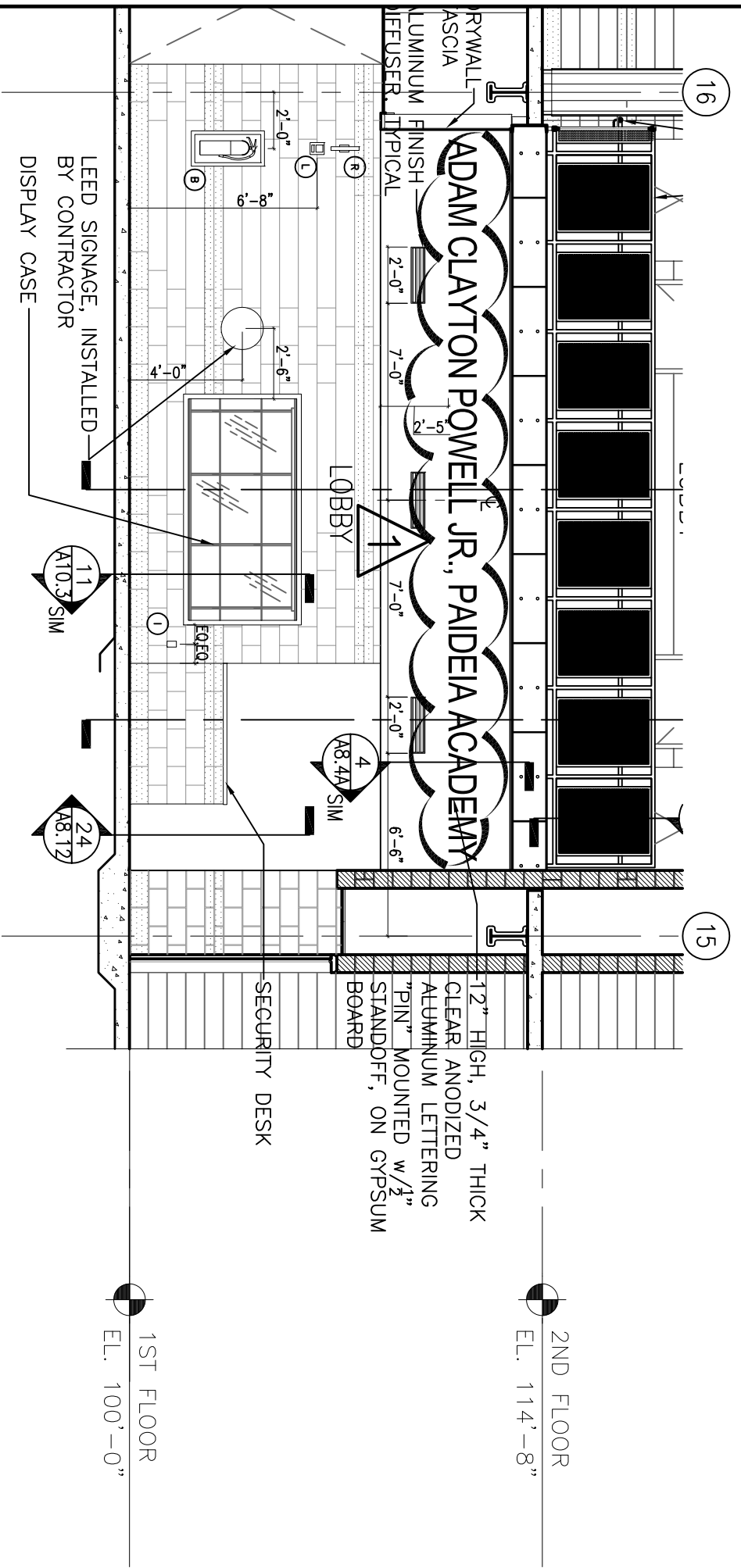


**POWELL REPLACEMENT
ELEMENTARY SCHOOL**
7511 S. SHORE DRIVE
CHICAGO, IL 60649



InterActive Design
308 W. Erie Street, Suite 506
Chicago, Illinois 60654
P: 312-482-8866 F: 312-482-9904

DATE: 04/16/09
SHEET REFERENCE: A4.4
SKETCH NUMBER: ASK-017



2
A4.5 3/16" = 1'-0"

BUILDING SECTION - LOBBY LOOKING EAST



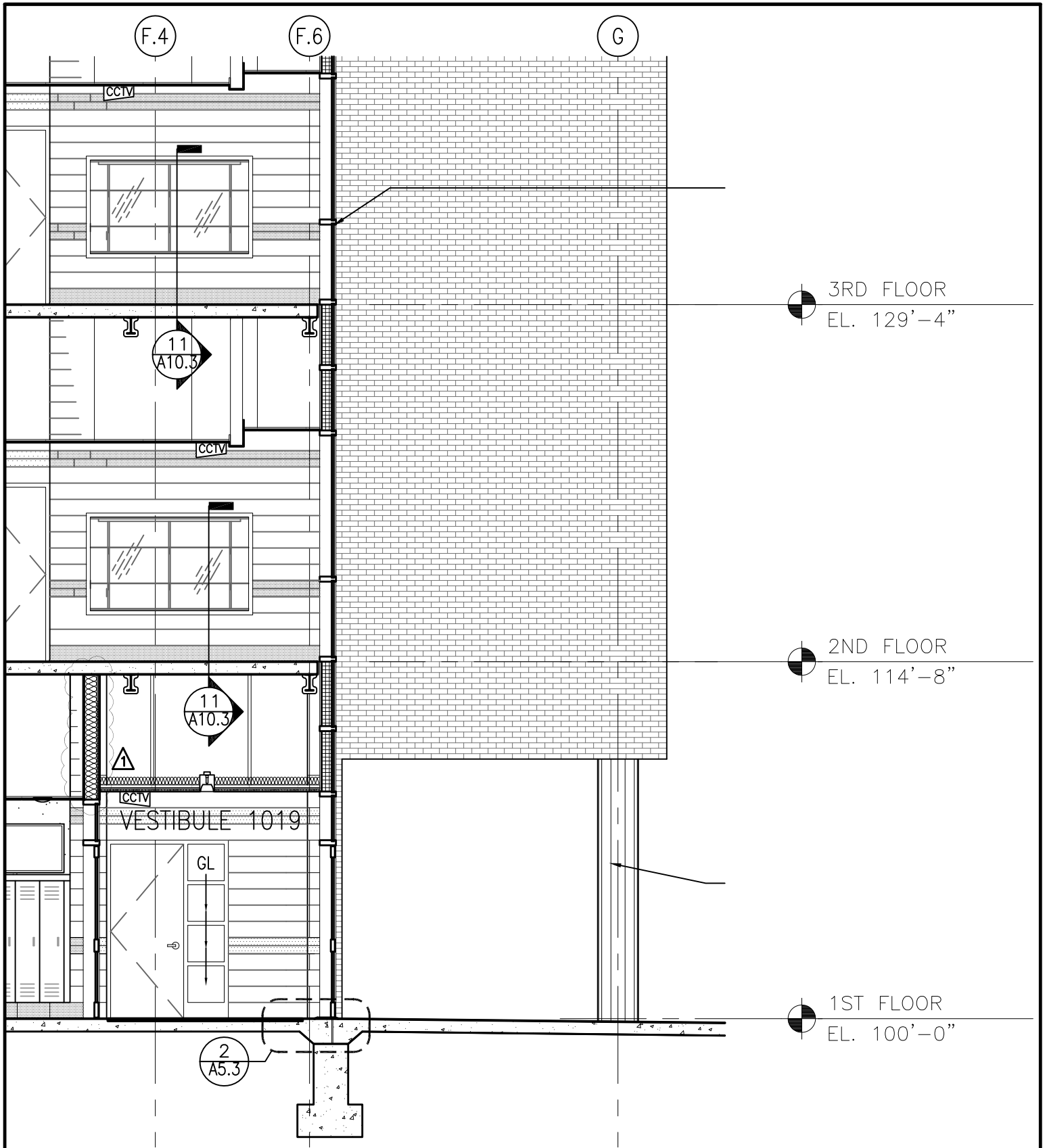
POWELL REPLACEMENT
ELEMENTARY SCHOOL
7511 S. SHORE DRIVE
CHICAGO, IL 60649



InterActive Design DATE: 04/16/09
308 W. Erie Street, Suite 506
Chicago, Illinois 60654
P: 312-482-9886 F: 312-482-9904
SHEET REFERENCE: A4.5
SKETCH NUMBER: ASK-018

1ST FLOOR
EL. 100'-0"

2ND FLOOR
EL. 114'-8"



1 E/W BLDG SECTION—LOOKING NORTH
 A4.6 3/16" = 1'-0"

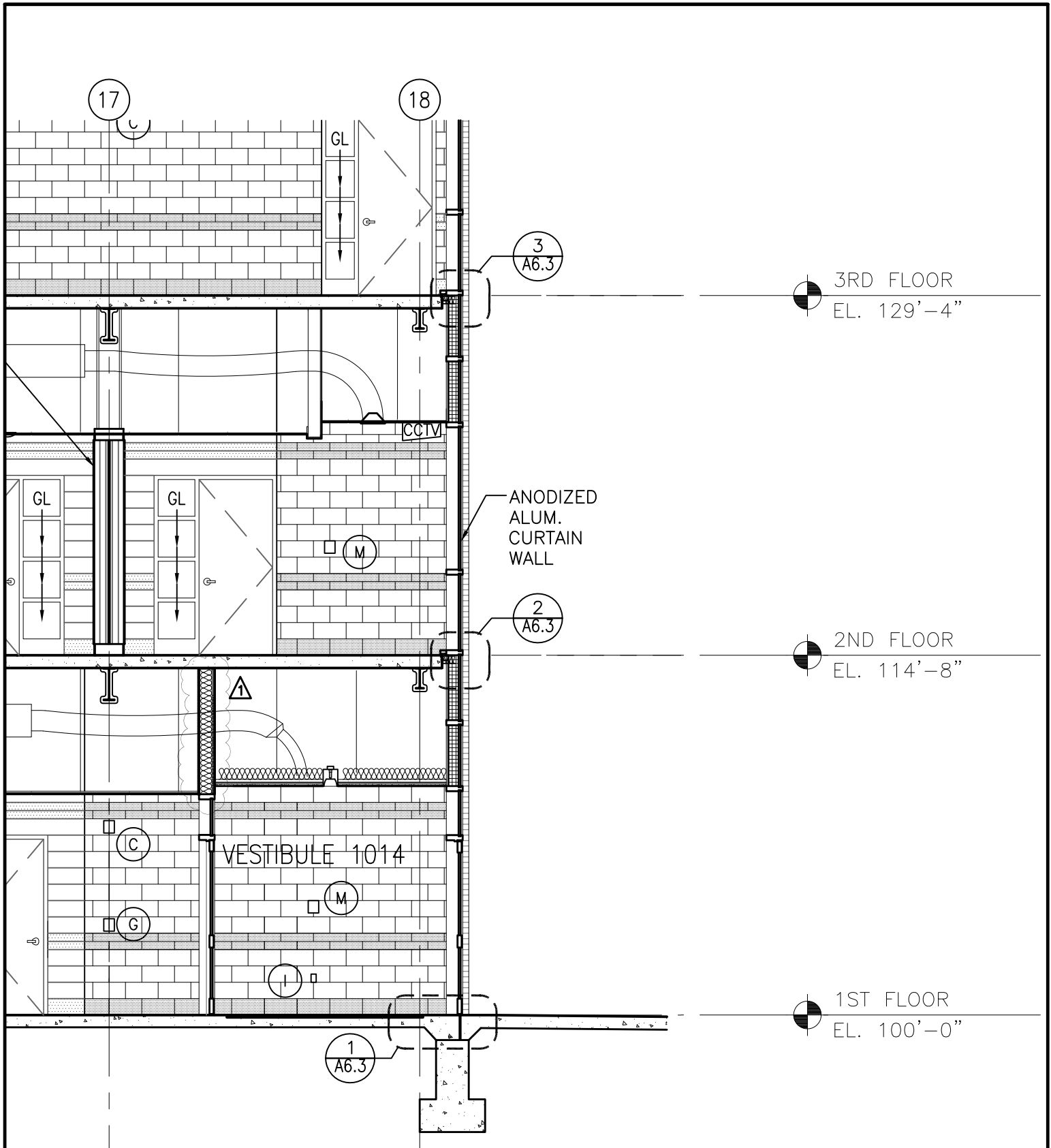


**POWELL REPLACEMENT
 ELEMENTARY SCHOOL**
 7511 S. SHORE DRIVE
 CHICAGO, IL 60649



InterActive Design
 308 W. Erie Street, Suite 506
 Chicago, Illinois 60654
 P: 312-482-8866 F: 312-482-9904

DATE: 04/16/09
 SHEET REFERENCE: A4.6
 SKETCH NUMBER: ASK-019



2 N/S BLDG SECTION—LOOKING WEST
 A4.7 3/16" = 1'-0"



**POWELL REPLACEMENT
 ELEMENTARY SCHOOL**
 7511 S. SHORE DRIVE
 CHICAGO, IL 60649



InterActive Design
 308 W. Erie Street, Suite 506
 Chicago, Illinois 60654
 P: 312-482-8866 F: 312-482-9904

DATE: 04/16/09
SHEET REFERENCE: A4.7
SKETCH NUMBER: ASK-020