

T/ PARAPET
EL. 148'-4"

4TH FLOOR/ROOF
EL. VARIES

3RD FLOOR
EL. 129'-4"

2ND FLOOR
EL. 114'-8"

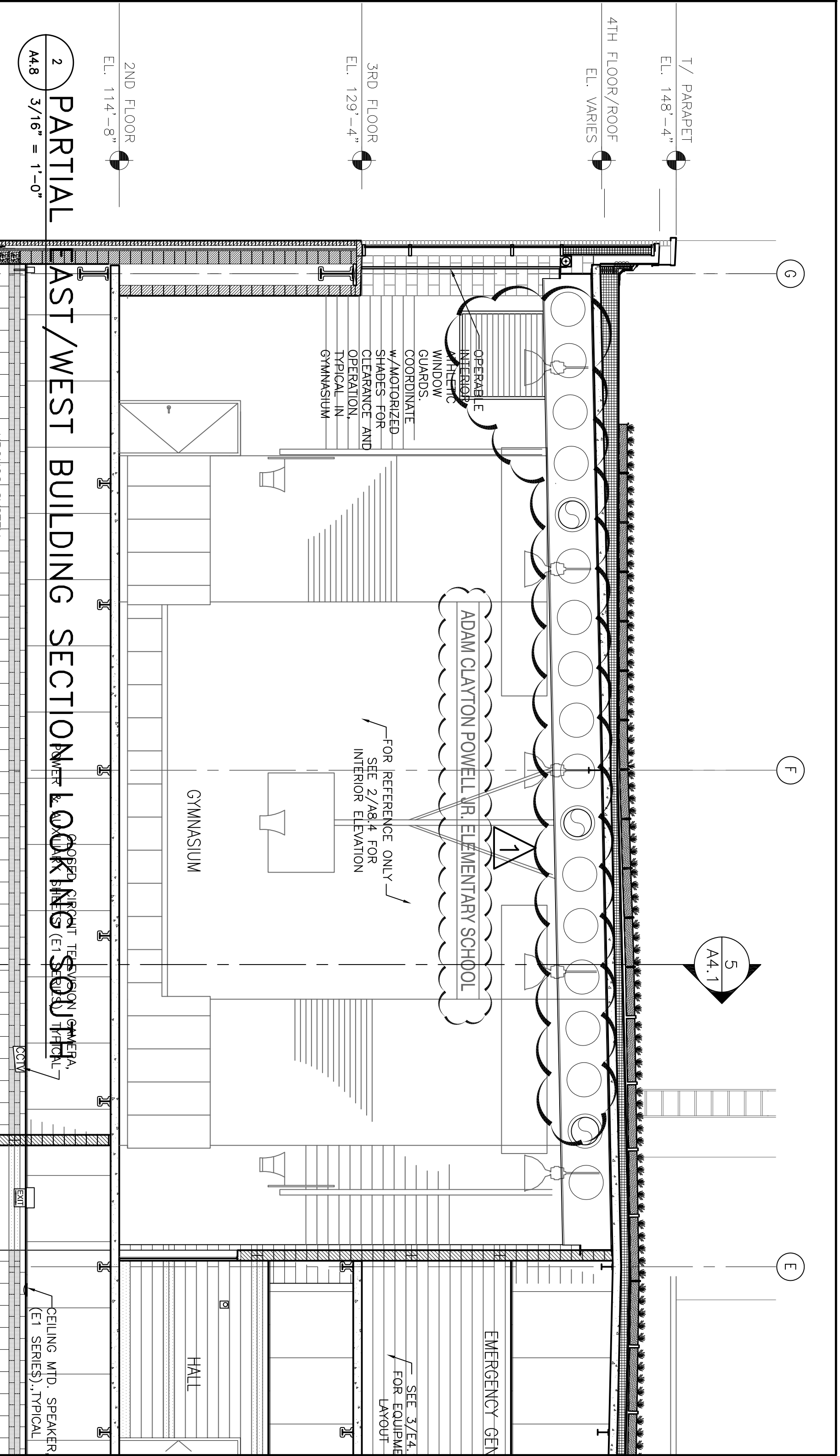
PARTIAL SECTION - LOOKING NORTH

A4.8 3/16" = 1'-0"

**POWELL REPLACEMENT
ELEMENTARY SCHOOL**
7511 S. SHORE DRIVE
CHICAGO, IL 60649



Interactive Design DATE: 04/16/09
308 W. Erie Street, Suite 606
Chicago, Illinois 60654
P: 312-482-8866 F: 312-482-9004
SHEET REFERENCE: A4.8
SKETCH NUMBER: ASK-021



T/ PARAPET
EL. 148'-4"

4TH FLOOR/ROOF
EL. VARIES

3RD FLOOR
EL. 129'-4"

2ND FLOOR
EL. 114'-8"

2 PARTIAL
A4.8 3/16" = 1'-0"

EAST/WEST BUILDING SECTION
LOOKING SOUTH

OPERABLE INTERIOR ATHLETIC WINDOW GUARDS. COORDINATE W/MOTORIZED SHADES FOR CLEARANCE AND OPERATION, TYPICAL IN GYMNASIUM

ADAM CLAYTON POWELL JR. ELEMENTARY SCHOOL

FOR REFERENCE ONLY SEE 2/A8.4 FOR INTERIOR ELEVATION

GYMNASIUM

EMERGENCY GEN

SEE 3/E4. FOR EQUIPMENT LAYOUT

HALL

CEILING MTD. SPEAKER (E1 SERIES), TYPICAL

CCTV

EXIT

5
A4.1

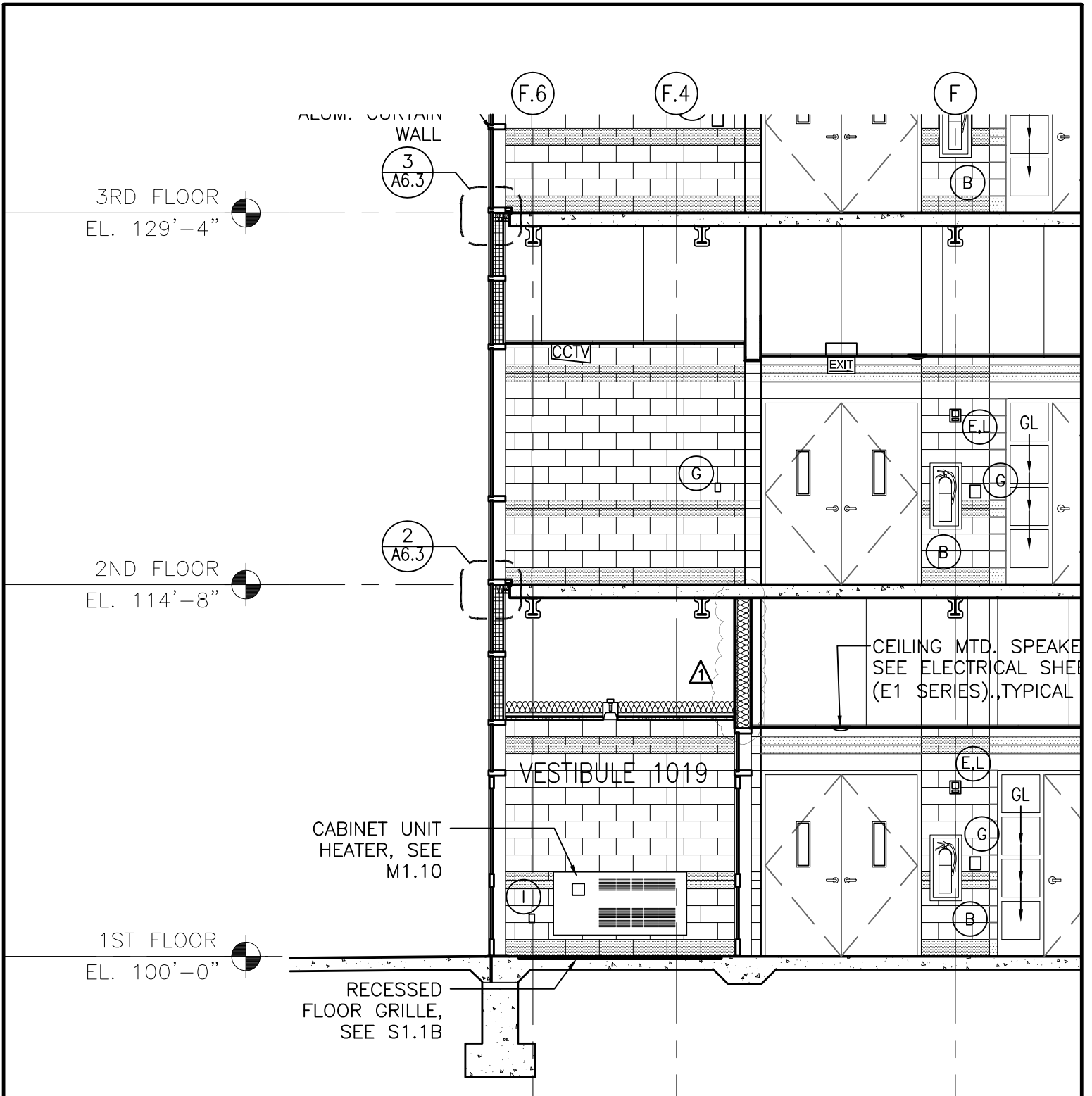


Chicago Public Schools

**POWELL REPLACEMENT
ELEMENTARY SCHOOL**
7511 S. SHORE DRIVE
CHICAGO, IL 60649



Interactive Design DATE: 04/16/09
308 W. Erie Street, Suite 606
Chicago, Illinois 60654
P: 312-482-8866 F: 312-482-9904
SHEET REFERENCE: A4.8
SKETCH NUMBER: ASK-022



1 E/W BLDG SECTION—LOOKING SOUTH
 A4.9 3/16" = 1'-0"

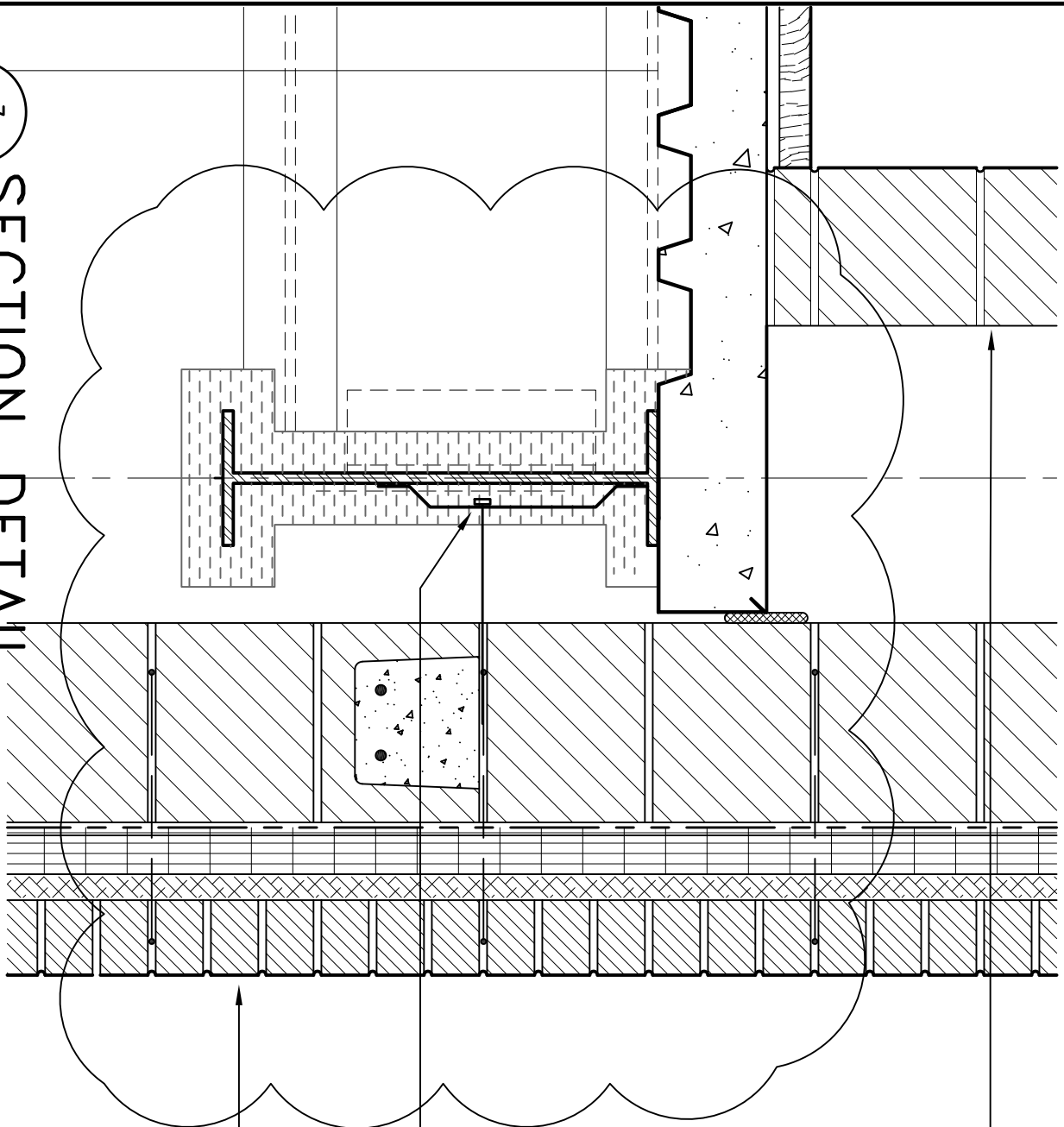


**POWELL REPLACEMENT
 ELEMENTARY SCHOOL**
 7511 S. SHORE DRIVE
 CHICAGO, IL 60649



InterActive Design
 308 W. Erie Street, Suite 506
 Chicago, Illinois 60654
 P: 312-482-8866 F: 312-482-9904

DATE: 04/16/09
 SHEET REFERENCE: A4.9
 SKETCH NUMBER: ASK-023



7
A6.4

SECTION DETAIL
1-1/2" = 1'-0"

8" NOMINAL CMU - SEE STRUCT. DWGS.

GALV. MASONRY ANCHOR - SEE STRUCT DWGS.

TYPICAL MASONRY CAVITY WALL ASSEMBLY -
SEE NOTES ON SHEET A6-1, DETAIL 5

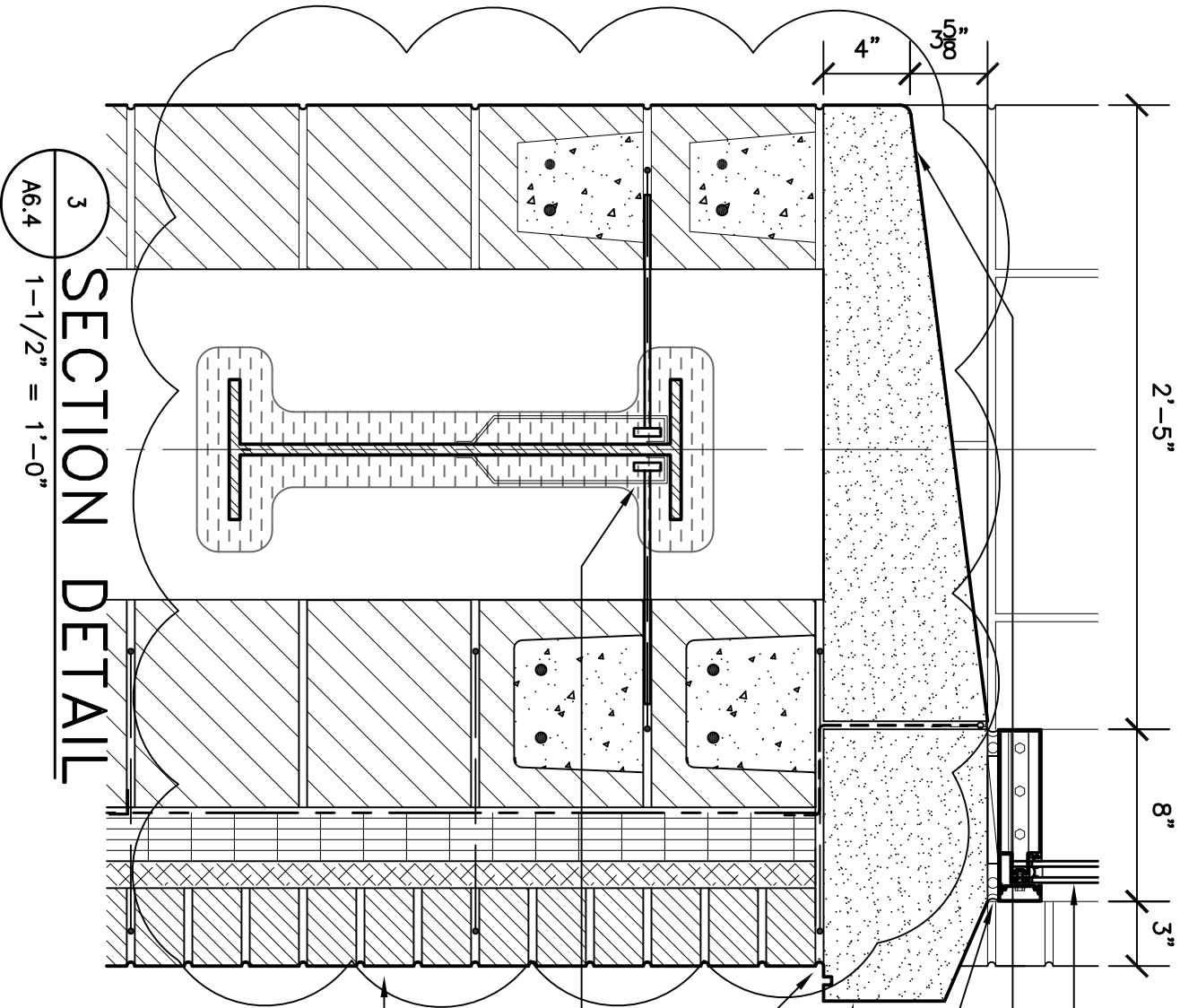


**POWELL REPLACEMENT
ELEMENTARY SCHOOL**
7511 S. SHORE DRIVE
CHICAGO, IL 60649



Interactive Design DATE: 04/16/09
SHEET REFERENCE: A6.4
SKETCH NUMBER: ASK-024

308 W. Erie Street, Suite 506
Chicago, Illinois 60654
P: 312-482-9886 F: 312-482-9904



3
A6.4
SECTION DETAIL
1'-1 1/2" = 1'-0"

TYPICAL MASONRY CAVITY WALL ASSEMBLY -
SEE NOTES ON SHEET A6-1, DETAIL 5

GALV. MASONRY ANCHOR - SEE STRUCT DWGS.

THROUGH-WALL FLASHING w/S.S. DRIP-EDGE -
TURN UP AT BACK OF SILL AND PROVIDE END
DAMS.

LIMESTONE SILL w/COPEd TOP & CONT. DRIP
EDGE.

BACKER ROD AND SEALANT,
INTERIOR & EXTERIOR

LIMESTONE SILL w/ EASED EDGE

1" INSULATED GLAZING WITH LOW-E COATING



Chicago Public Schools

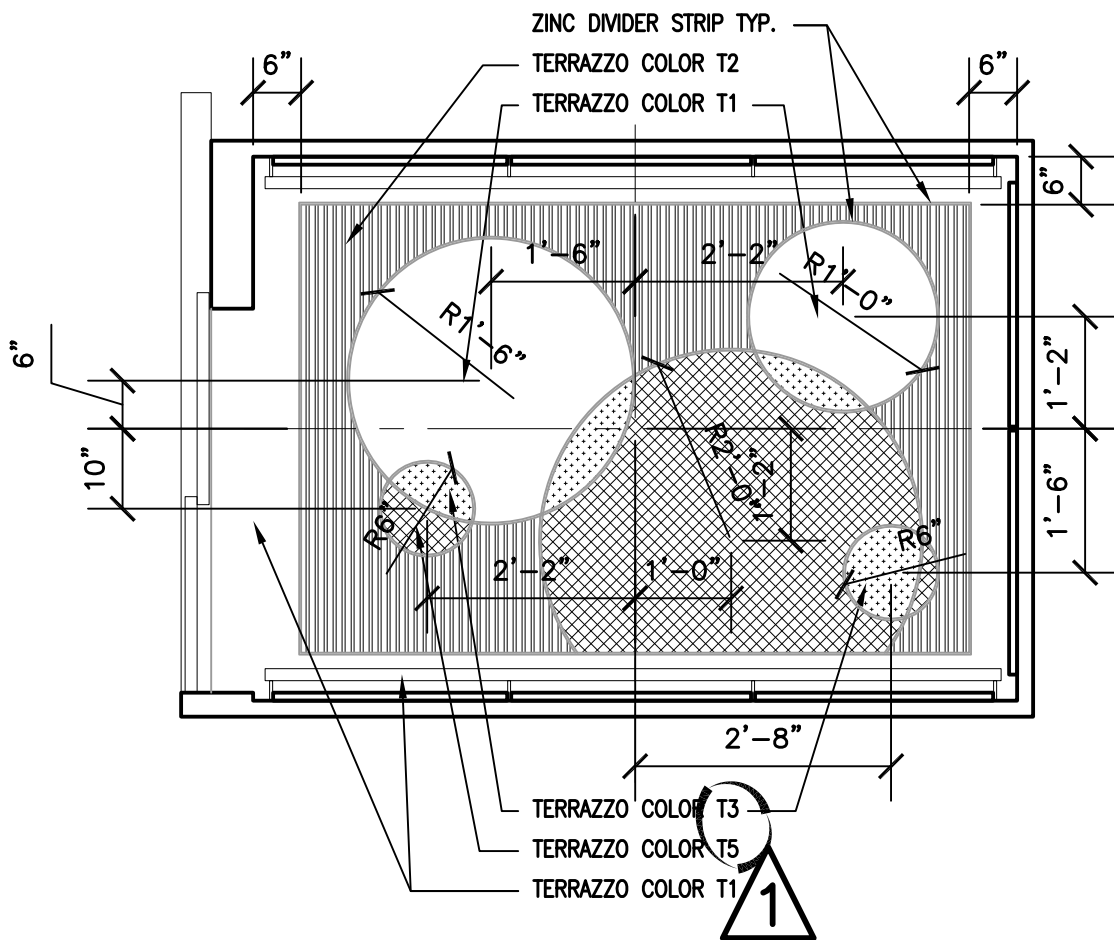
**POWELL REPLACEMENT
ELEMENTARY SCHOOL**
7511 S. SHORE DRIVE
CHICAGO, IL 60649



PUBLIC BUILDING COMMISSION
of Chicago

InterActive Design DATE: 04/16/09
308 W. Erie Street, Suite 506
Chicago, Illinois 60654
P: 312-482-9886 F: 312-482-9904

SHEET REFERENCE: A6.4
SKETCH NUMBER: ASK-025



11 CAB FLOOR PATTERN
 A7.5 1/2" = 1'-0"

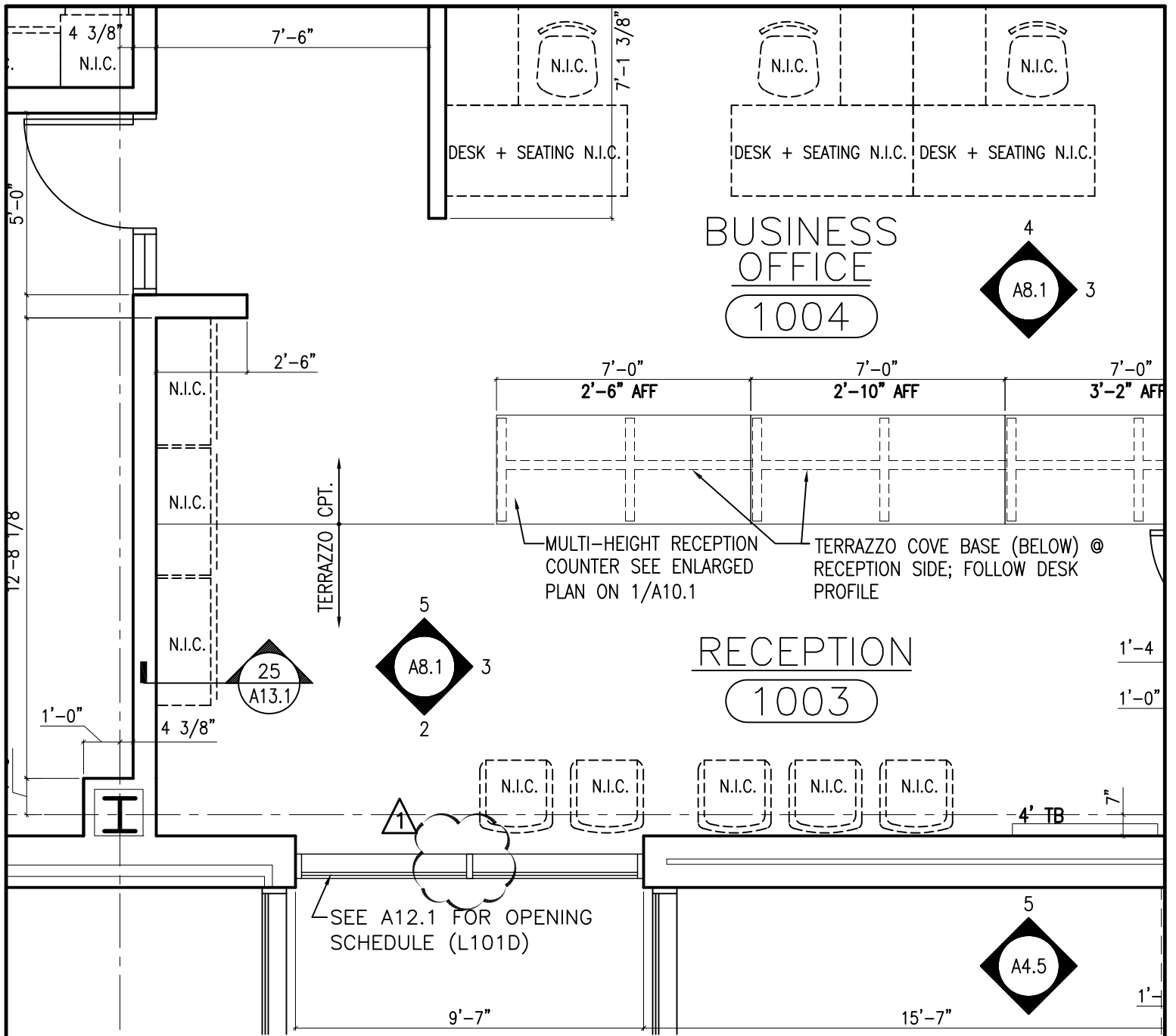


**POWELL REPLACEMENT
 ELEMENTARY SCHOOL**
 7511 S. SHORE DRIVE
 CHICAGO, IL 60649



InterActive Design
 308 W. Erie Street, Suite 506
 Chicago, Illinois 60654
 P: 312-482-8866 F: 312-482-9904

DATE: 04/16/09
 SHEET REFERENCE: A7.5
 SKETCH NUMBER: ASK-026



1
A8.1

ENLARGED PLAN-ADMINISTRATION

1/4" = 1'-0"

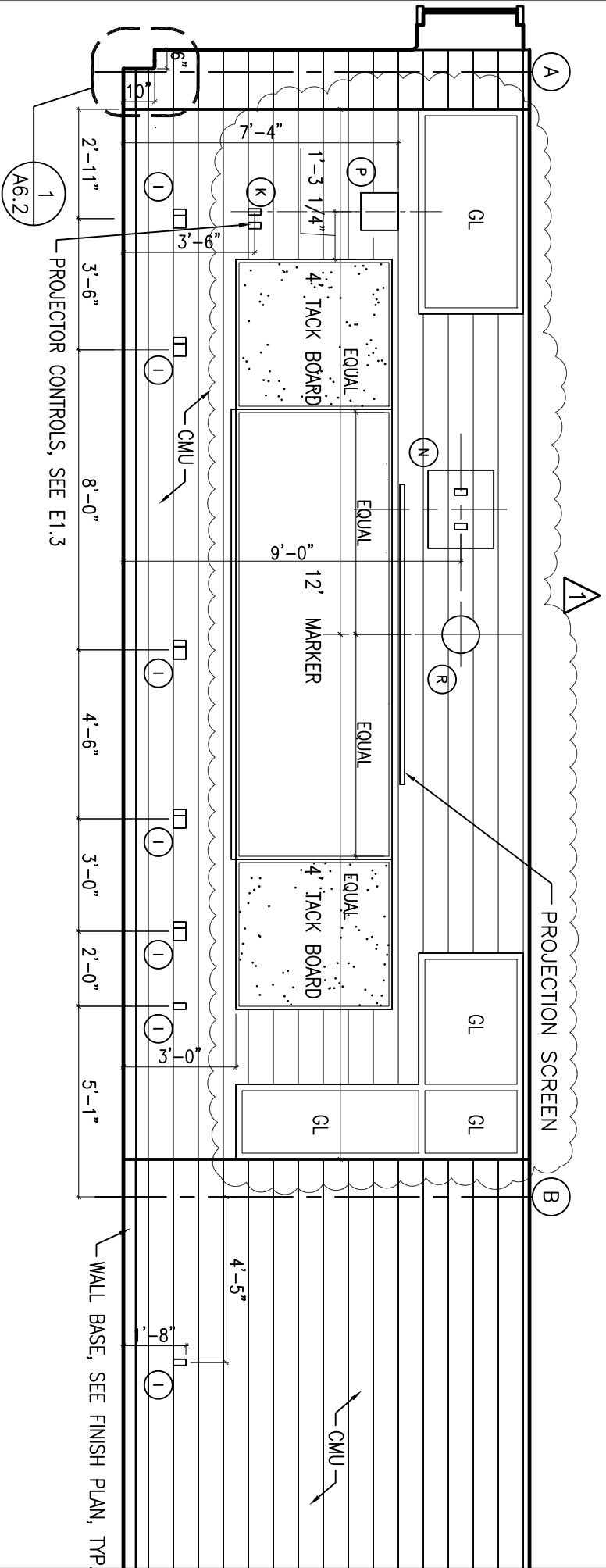


**POWELL REPLACEMENT
ELEMENTARY SCHOOL**
7511 S. SHORE DRIVE
CHICAGO, IL 60649



InterActive Design
308 W. Erie Street, Suite 506
Chicago, Illinois 60654
P: 312-482-8866 F: 312-482-9904

DATE: 04/16/09
SHEET REFERENCE: A8.1
SKETCH NUMBER: ASK-027



INTERIOR ELEVATION-SCIENCE LAB 1

2
A8.3
1/4" = 1'-0"



**POWELL REPLACEMENT
ELEMENTARY SCHOOL**
7511 S. SHORE DRIVE
CHICAGO, IL 60649

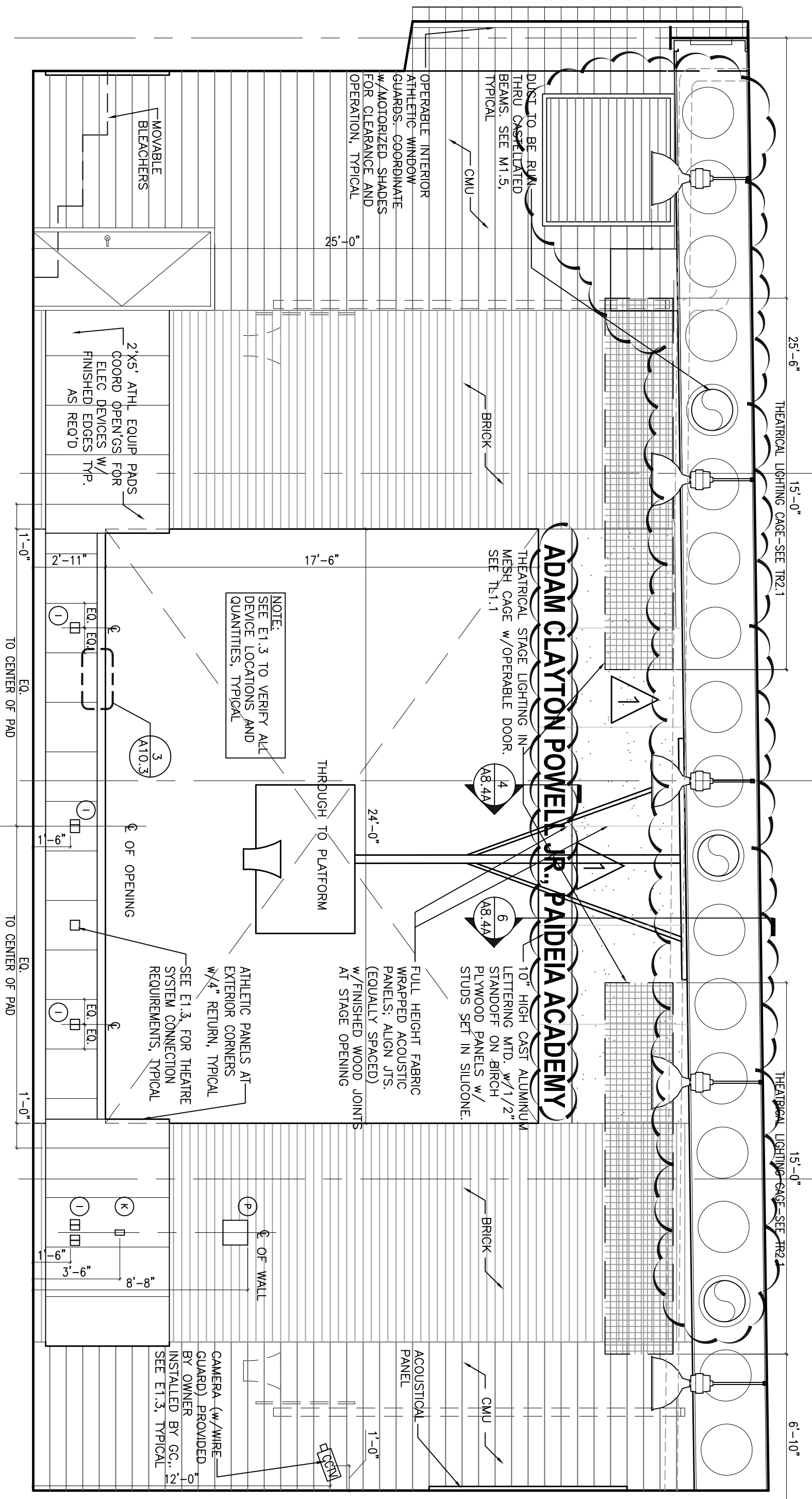


Interactive Design DATE: 04/16/09
308 W. Erie Street, Suite 506
Chicago, Illinois 60654
P: 312-482-9886 F: 312-482-9904
SHEET REFERENCE: A8.3
SKETCH NUMBER: ASK-028

G

F

E



3
A8.4

INTERIOR ELEVATION - GYMNASIUM

1/4" = 1'-0"



**POWELL REPLACEMENT
ELEMENTARY SCHOOL**
7511 S. SHORE DRIVE
CHICAGO, IL 60649



Interactive Design DATE: 04/16/09
308 W. Erie Street, Suite 606
Chicago, Illinois 60654
P: 312-482-8866 F: 312-482-9904
SHEET REFERENCE: A8.4
SKETCH NUMBER: ASK-030