

15.5

14.5

13

FRONT STAGE LIGHTING IN WIRE CAGE ENCLOSURE. SEE TL1.1, TYPICAL

6  
A8.4A

MECHANICAL DUCTS; SEE M4.2

CONNECTION TO STRUCTURAL BEAM BY COLD-FORMED FRAMING INSTALLER

(2) LAYERS 5/8" TYPE 'X' GMB ON ALL SIDES OF MTL FRAMING (PTD.)

6" COLD FORMED (LIGHT GAGE) METAL FRAMING AT 16" O.C.

MOTORIZED SCREEN AND HOUSING; 9'x12' SCREEN w/BLACK MATERIAL TO ALLOW SCREEN TO EXTEND TO 36" ABOVE

STAGE: COORD. ELEC. SUPPLY AS REQ'D. INSTALLING CONTRACTOR TO PROVIDE AND INSTALL NECESSARY SUPPORT AND CONNECTIONS TO STRUCTURAL STEEL MEMBERS IN ACCORDANCE w/MFR. REQ'FS. CONTRACTOR TO COORDINATE THESE CONNECTIONS w/ALL RELATED WORK AS REQ'D. TYPICAL. SEE E1.3 FOR ELECTRICAL CONNECTIONS, OPERATOR LOCATIONS.

STAGE RIGGING FOR REFERENCE ONLY - SEE 'TL' SERIES DRAWINGS

WHEEL CHAIR LIFT OPERATOR, SEE E1.3

BRICK

ACUSTICAL PANELS 1/2" ABOVE WOOD PANEL  
10" HIGH CAST-ALUMINUM LETTERING MTD. w/1/2" STANDOFF ON BIRCH PLYWOOD PANELS w/ STUDS SET IN SILICONE. PROVIDE BLOCKING FOR 3" DEEP MOUNTING STUDS OF LETTERS.

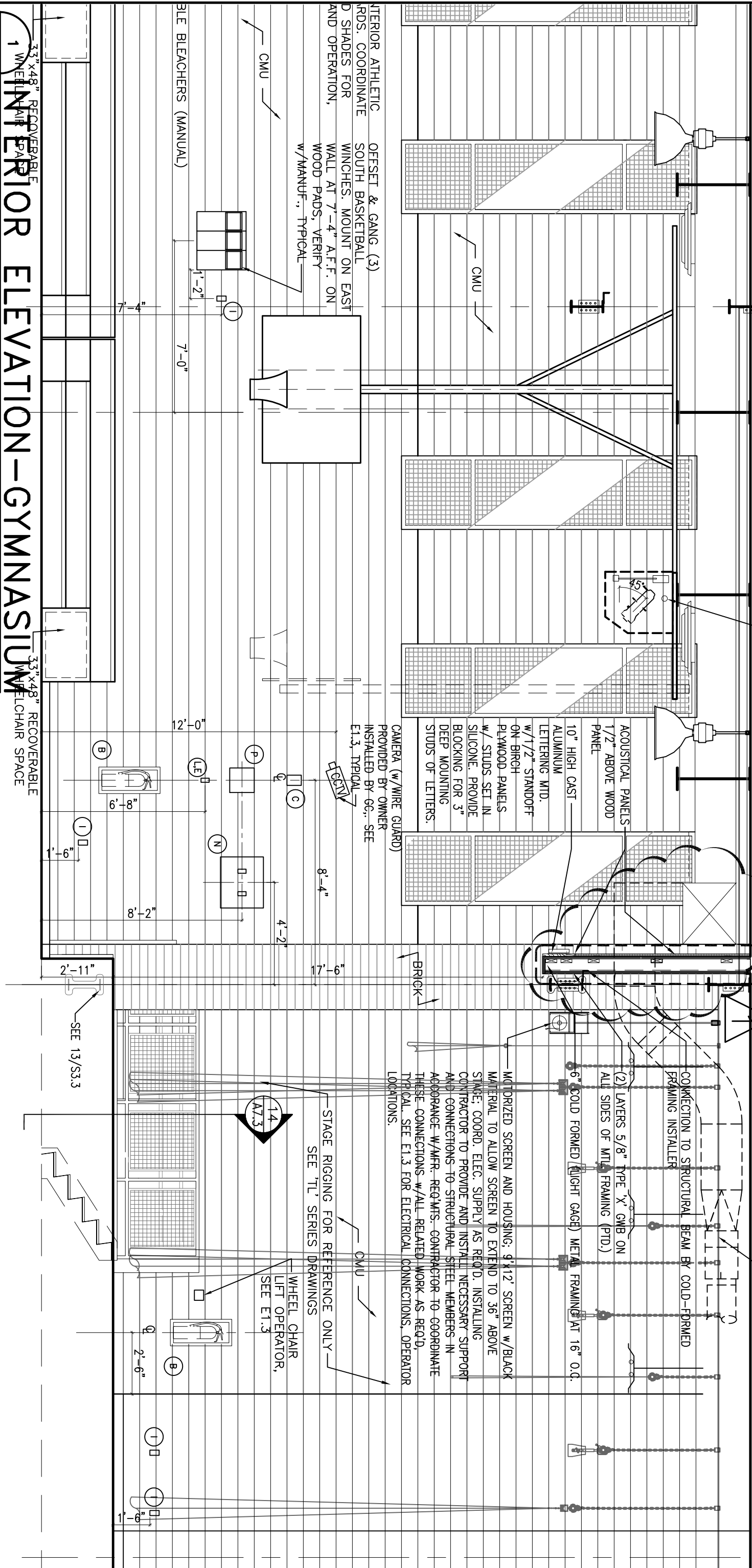
CAMERA (w/WIRE GUARD) PROVIDED BY OWNER INSTALLED BY GC. SEE E1.3, TYPICAL

INTERIOR ATHLETIC RDS. COORDINATE D SHADES FOR AND OPERATION,  
OFFSET & GANG (3) SOUTH BASKETBALL WINCHES. MOUNT ON EAST WALL AT 7'-4" A.F.F. ON WOOD PADS, VERIFY w/MANUF., TYPICAL

BLEACHERS (MANUAL)

33" x 48" RECOVERABLE WHEELCHAIR SPACE  
33" x 48" RECOVERABLE WHEELCHAIR SPACE

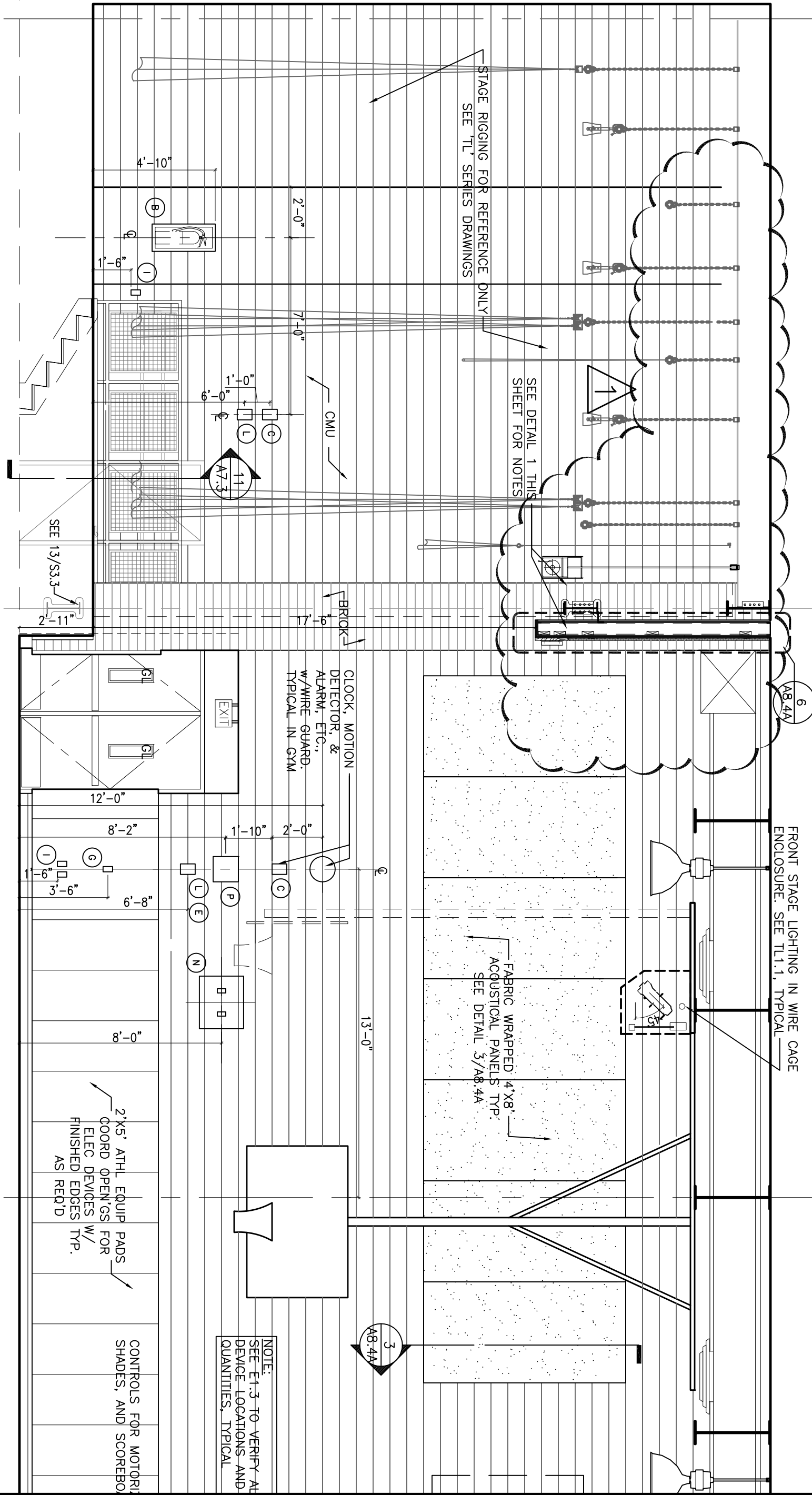
A8.4A 1/4" = 1'-0"



POWELL REPLACEMENT  
ELEMENTARY SCHOOL  
7511 S. SHORE DRIVE  
CHICAGO, IL 60649



Interactive Design DATE: 04/16/09  
SHEET REFERENCE: A8.4A  
SKETCH NUMBER: ASK-031



**2** INTERIOR ELEVATION-GYMNASIUM  
 A8.4A 1/4" = 1'-0"

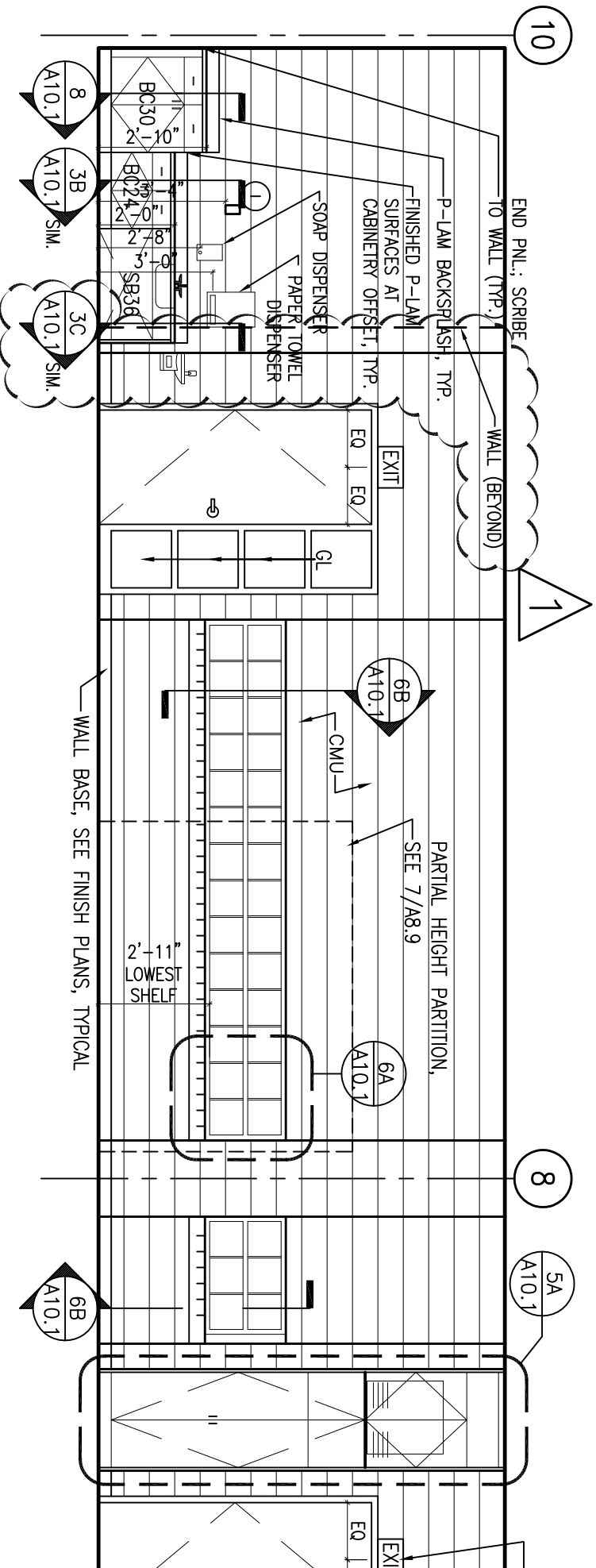


**POWELL REPLACEMENT  
 ELEMENTARY SCHOOL**  
 7511 S. SHORE DRIVE  
 CHICAGO, IL 60649



**Interactive Design** DATE: 04/16/09  
 SHEET REFERENCE: A8.4A  
 SKETCH NUMBER: ASK-032

308 W. Erie Street, Suite 606  
 Chicago, Illinois 60654  
 P: 312-482-8866 F: 312-482-9004



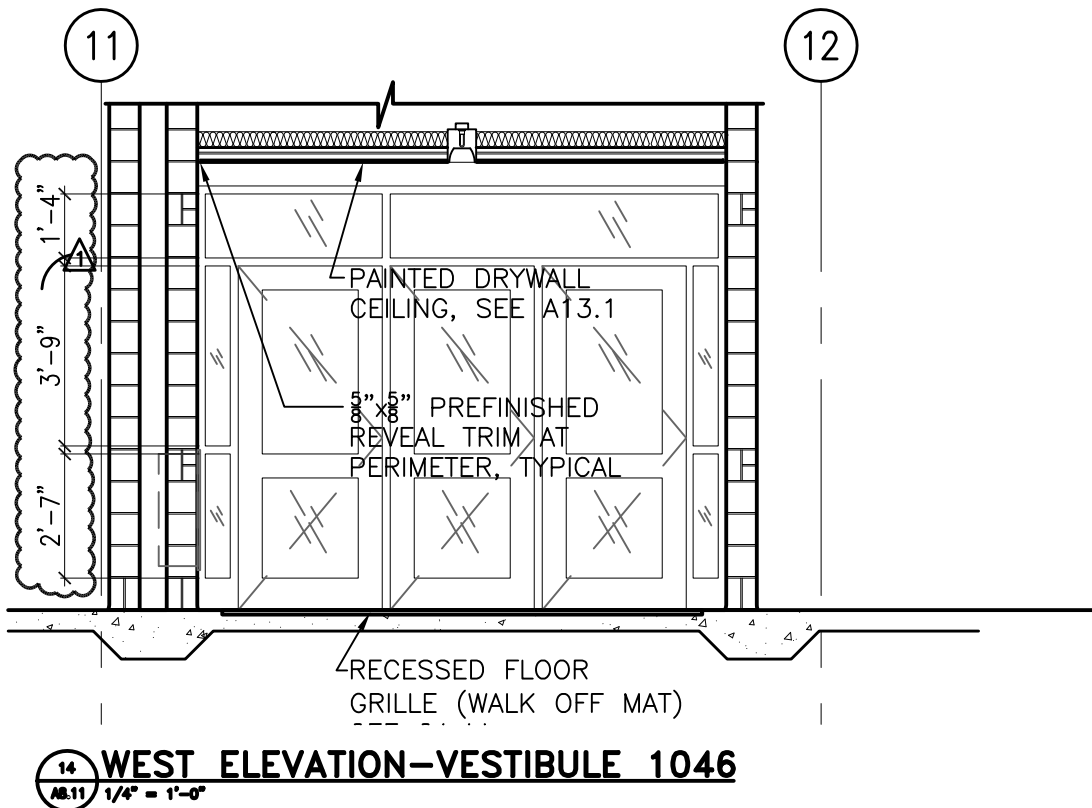
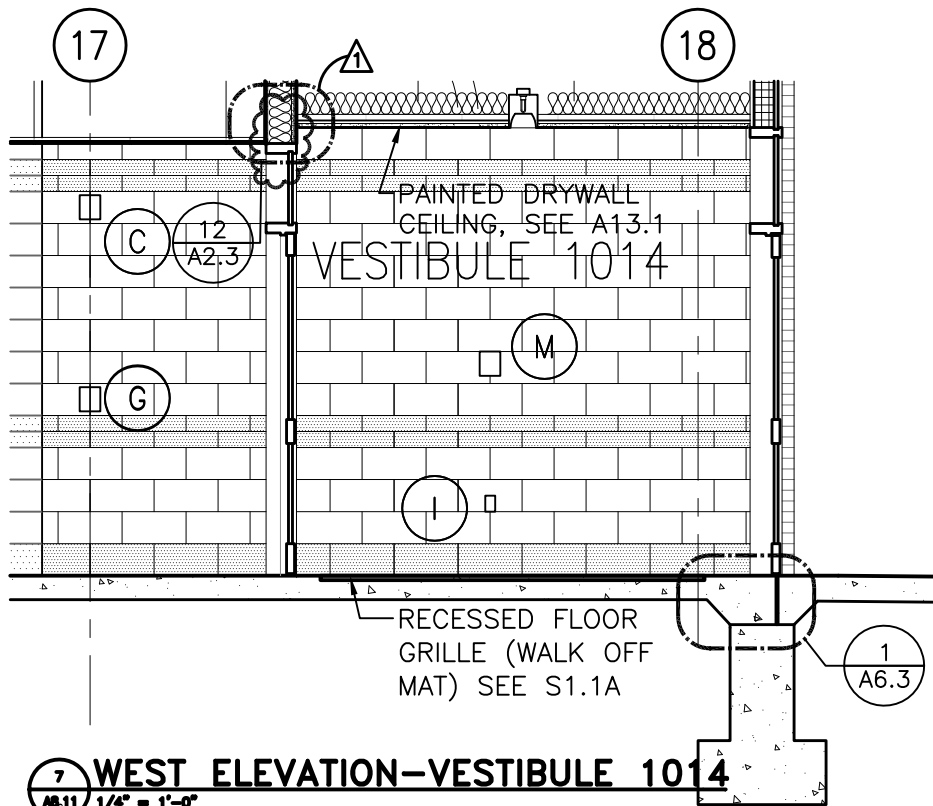
4 INTERIOR ELEVATION--CLASSROOM PRE-K/K

A8.9 1/4" = 1'-0"

**POWELL REPLACEMENT  
ELEMENTARY SCHOOL**  
7511 S. SHORE DRIVE  
CHICAGO, IL 60649



**InterActive Design** DATE: 04/16/09  
308 W. Erie Street, Suite 506  
Chicago, Illinois 60654  
P: 312-482-2886 F: 312-482-9904  
SHEET REFERENCE: A8.9  
SKETCH NUMBER: ASK-033

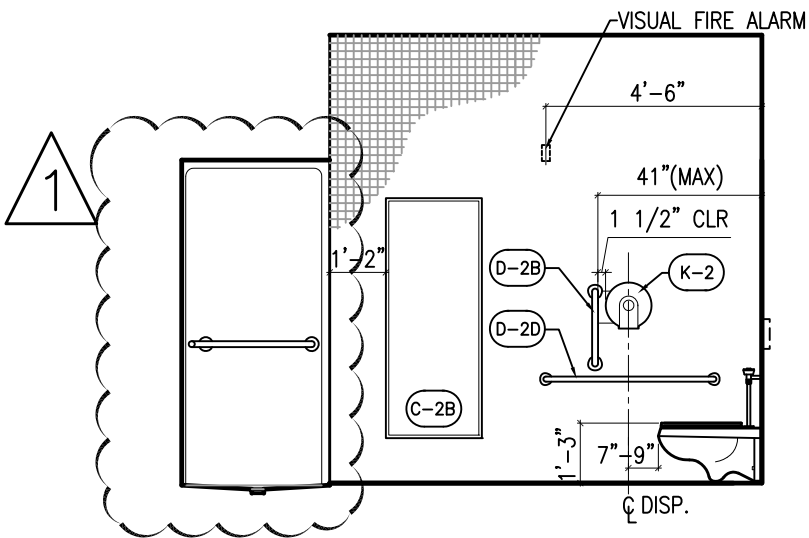


**POWELL REPLACEMENT  
ELEMENTARY SCHOOL**  
7511 S. SHORE DRIVE  
CHICAGO, IL 60649



**InterActive Design**  
308 W. Erie Street, Suite 506  
Chicago, Illinois 60654  
P: 312-482-8866 F: 312-482-9904

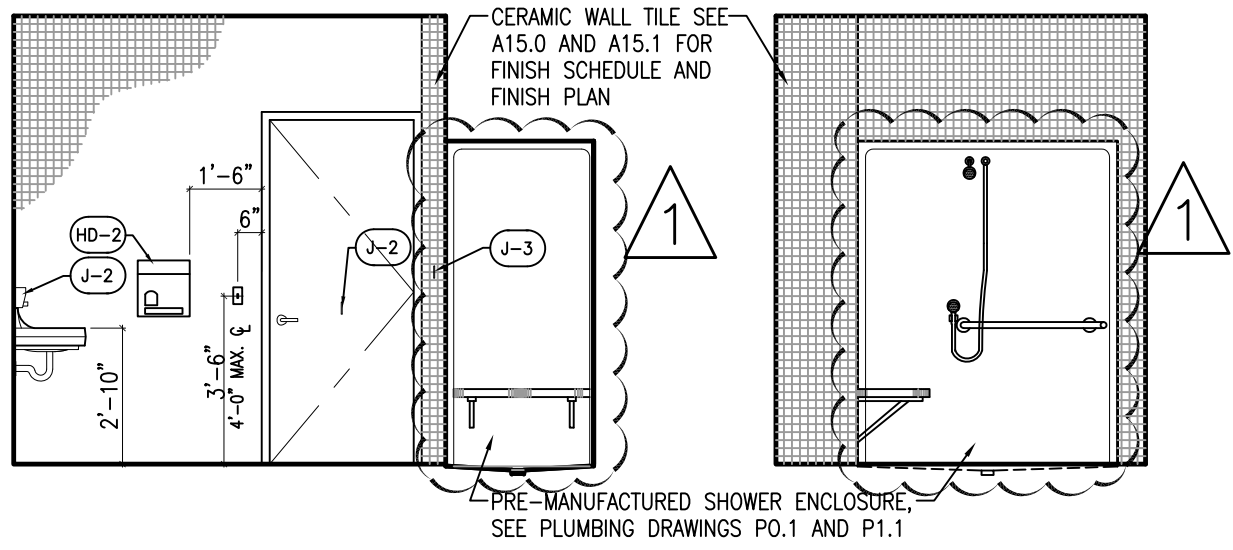
DATE: 04/16/09  
SHEET  
REFERENCE: A8.11  
SKETCH  
NUMBER: ASK-034



# NURSE TOILET ROOM 1072

23  
A8.13

1/4" = 1'-0"



# NURSE TOILET ROOM 1072

21  
A8.13

1/4" = 1'-0"

# NURSE TOILET ROOM 1072

20  
A8.13

1/4" = 1'-0"

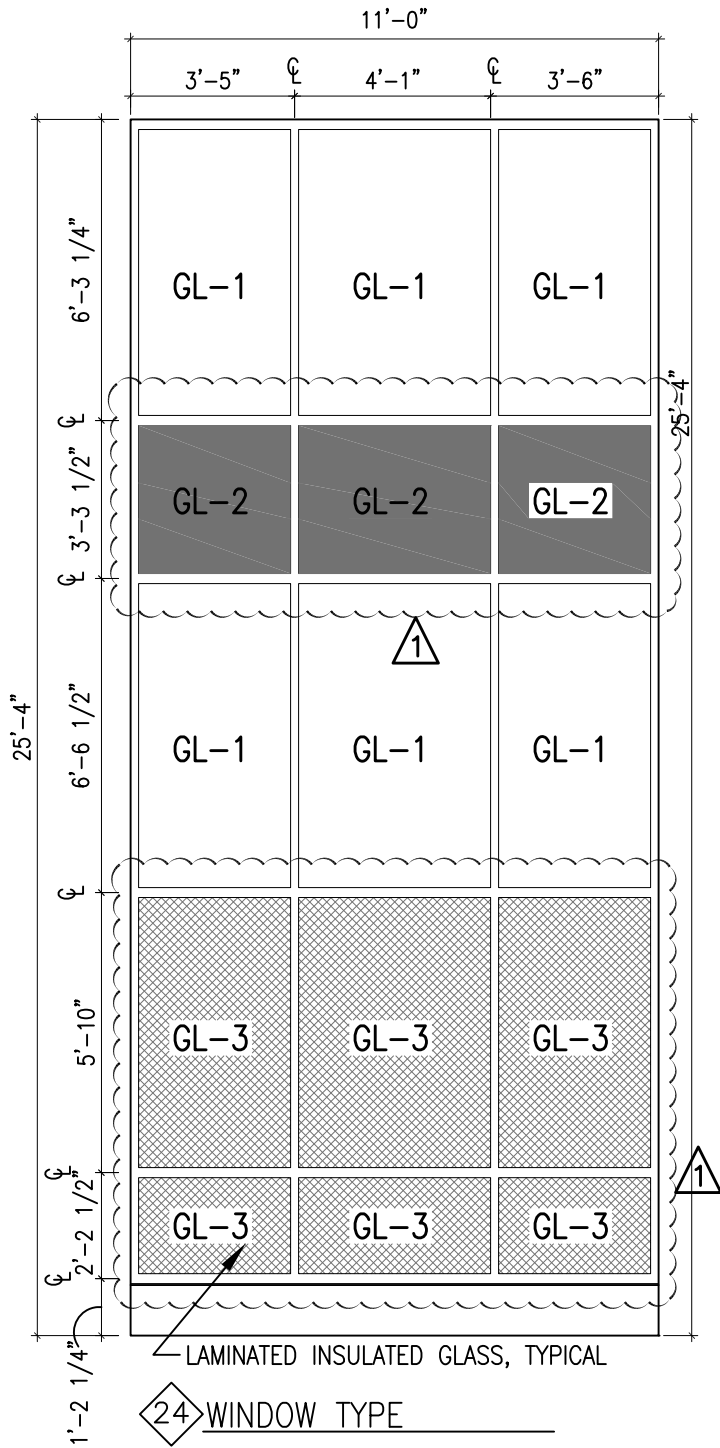


**POWELL REPLACEMENT  
ELEMENTARY SCHOOL**  
7511 S. SHORE DRIVE  
CHICAGO, IL 60649



**InterActive Design**  
308 W. Erie Street, Suite 506  
Chicago, Illinois 60654  
P: 312-482-8866 F: 312-482-9904

DATE: 04/16/09  
SHEET REFERENCE: A8.13  
SKETCH NUMBER: ASK-035



**POWELL REPLACEMENT  
ELEMENTARY SCHOOL**

7511 S. SHORE DRIVE  
CHICAGO, IL 60649



**InterActive Design**

308 W. Erie Street, Suite 506  
Chicago, Illinois 60654  
P: 312-482-8866 F: 312-482-9904

DATE: 04/16/09

SHEET  
REFERENCE: A12.2

SKETCH  
NUMBER: ASK-036

		00205-GLITTERING
CP-6	CARPET TILE	COUNSELOR OFFICE DESIGNWEAVE L0118-RAZZLE, 00175-COLORFUL
CT-1	CERAMIC MOSAIC FLOOR TILE	AMERICAN OLEAN 2"X2" A89 CHIRO SAND
CT-2	CERAMIC MOSAIC FLOOR TILE	AMERICAN OLEAN 2"X2" A09 SAPPHIRE SKY SPECKLED
		COLOR & MATERIAL SAME AS ADJACENT
PT 9	PAINT	ROADBURY GARNETT 10-42, BENJAMIN MOORE SEMI-GLOSS SHEEN LEVEL (INTERIOR STEEL DOORS)
COL PT 10	PAINT	EXTERIOR CONCRETE COLUMNS COLOR TO MATCH GREY OWL, OC-52, BENJAMIN MOORE
PT 11	PAINT	TBD, BENJAMIN MOORE SEMI-GLOSS SHEEN LEVEL (STEEL STAIRS + STAIR COMPONENTS AND GUARD RAILS, TYP. UNLESS NOTED OTHERWISE)
PT 12	PAINT	DAYS END #2133-30, BENJAMIN MOORE, EGGSHELL FINISH (STAGE WALLS AND DUCTWORK)
PT 13	PAINT	SYMPHONEY-BLUE #2060-10, BENJAMIN MOORE SEMI-GLOSS SHEEN LEVEL (HM DOOR FRAMES TYP. UNLESS NOTED OTHERWISE)

ALTERNATE:  
 PROVIDE ALTERNATE PRICE FOR DESIGNWEAVE I0112 -  
 ASSEMBLY, 12929 - HERD, TO BE INSTALLED IN LIEU OF  
 THE SPECIFIED CARPET.

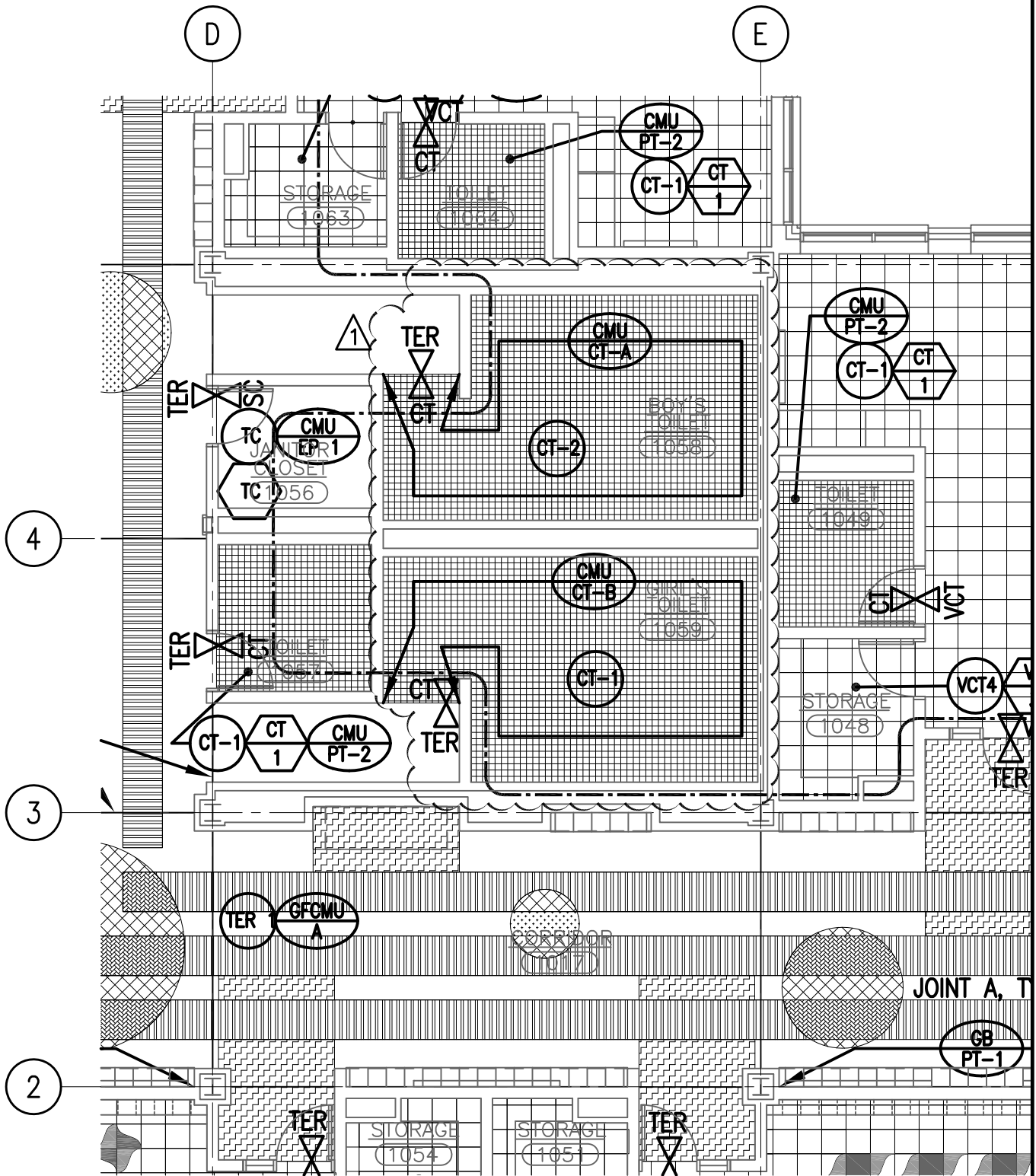


**POWELL REPLACEMENT  
 ELEMENTARY SCHOOL**  
 7511 S. SHORE DRIVE  
 CHICAGO, IL 60649



**InterActive Design**  
 308 W. Erie Street, Suite 506  
 Chicago, Illinois 60654  
 P: 312-482-8866 F: 312-482-9904

DATE: 04/16/09  
 SHEET  
 REFERENCE: A13.1  
 SKETCH  
 NUMBER: ASK-037



# 1 PARTIAL FIRST FLOOR FINISH PLAN

A13.5 1/8" = 1'-0"

TYPICAL WALL TILE TERMINATIONS FOR ALL BOY'S AND GIRLS TOILET ROOMS



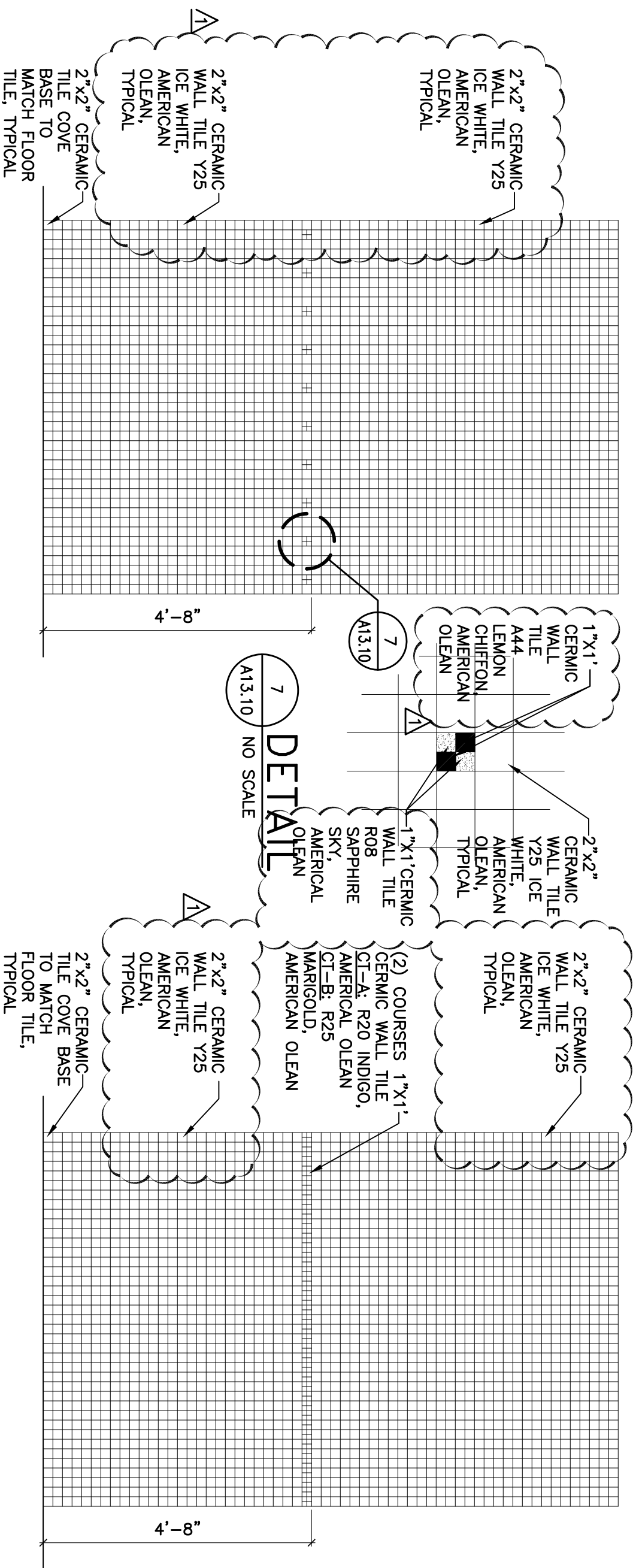
**POWELL REPLACEMENT  
ELEMENTARY SCHOOL**  
7511 S. SHORE DRIVE  
CHICAGO, IL 60649



**InterActive Design**  
308 W. Erie Street, Suite 506  
Chicago, Illinois 60654  
P: 312-482-8866 F: 312-482-9904

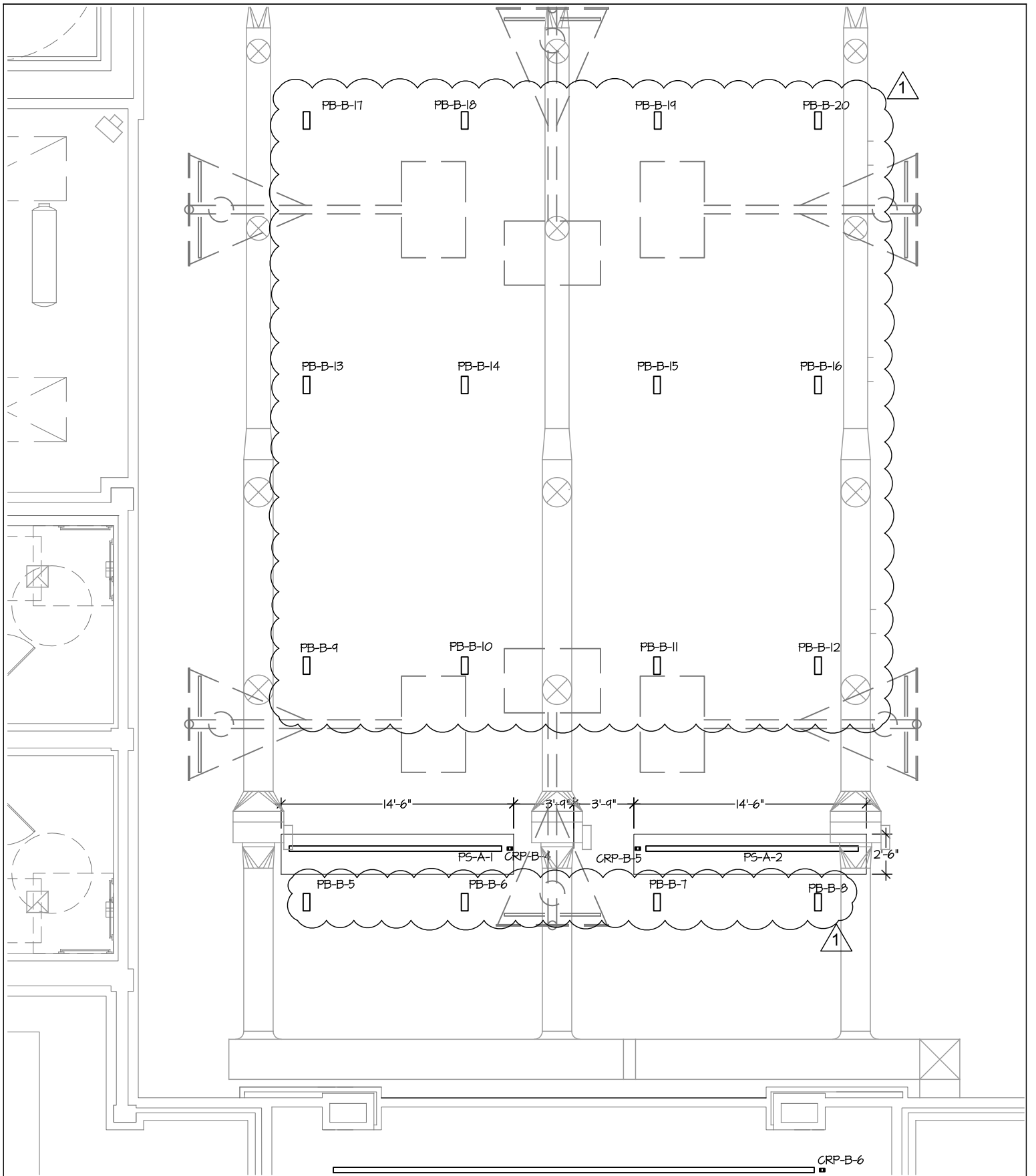
DATE: 04/16/09  
SHEET REFERENCE: A13.5  
SKETCH NUMBER: ASK-038





8  
 A13.10 **CT-C**  
 $1/2" = 1'-0"$

6  
 A13.10 **CT-A AND CT-B**  
 $1/2" = 1'-0"$



AI REFLECTED CEILING PLAN - THEATRE PANELS - REVISED  
 TSK 001 SCALE: 1/8" = 1'-0"

1 ADDENDUM 3

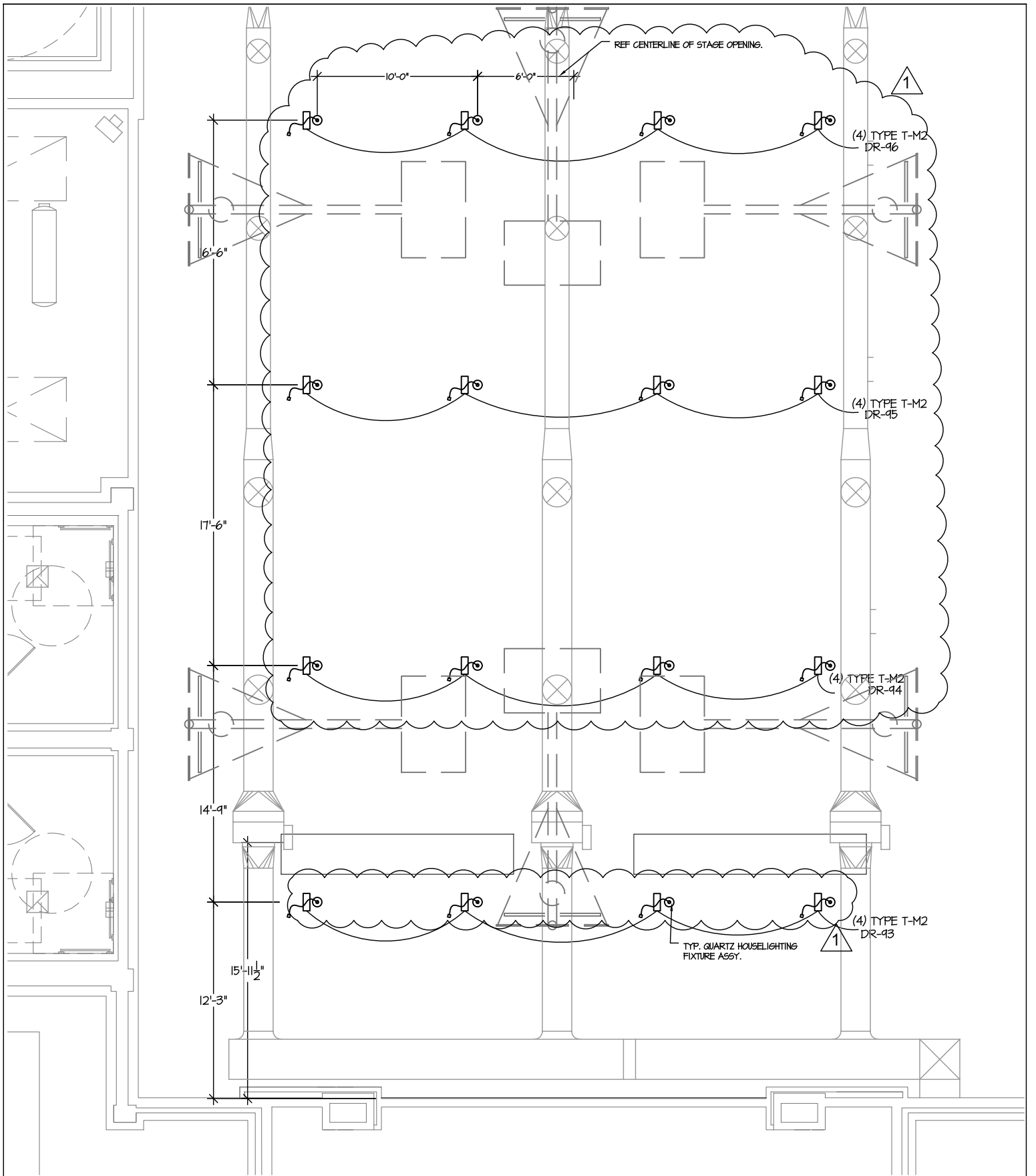


**POWELL REPLACEMENT  
 ELEMENTARY SCHOOL**  
 7511 S. SHORE DRIVE  
 CHICAGO, IL 60649



**InterActive Design**  
 308 W. Erie Street, Suite 506  
 Chicago, Illinois 60654  
 P: 312-482-8866 F: 312-482-9904

DATE: 4/16/09  
 SHEET REFERENCE: TL1.1  
 SKETCH NUMBER: **TSK-001**



AI REFLECTED CEILING PLAN - LIGHTING- REVISED  
 TSK 002 SCALE: 1/8" = 1'-0"

1 ADDENDUM 3



**POWELL REPLACEMENT  
 ELEMENTARY SCHOOL**  
 7511 S. SHORE DRIVE  
 CHICAGO, IL 60649



**InterActive Design**  
 308 W. Erie Street, Suite 506  
 Chicago, Illinois 60654  
 P: 312-482-8866 F: 312-482-9904

DATE: 4/16/09  
 SHEET REFERENCE: TL1.2  
 SKETCH NUMBER: **TSK-002**