



CHICAGO PARK DISTRICT
541 NORTH FABRICKS
CHICAGO, ILLINOIS 60611

BOOTH HANSEN

Architectural - Interior - Planning
333 South Dear Place Street
Chicago, Illinois 60681

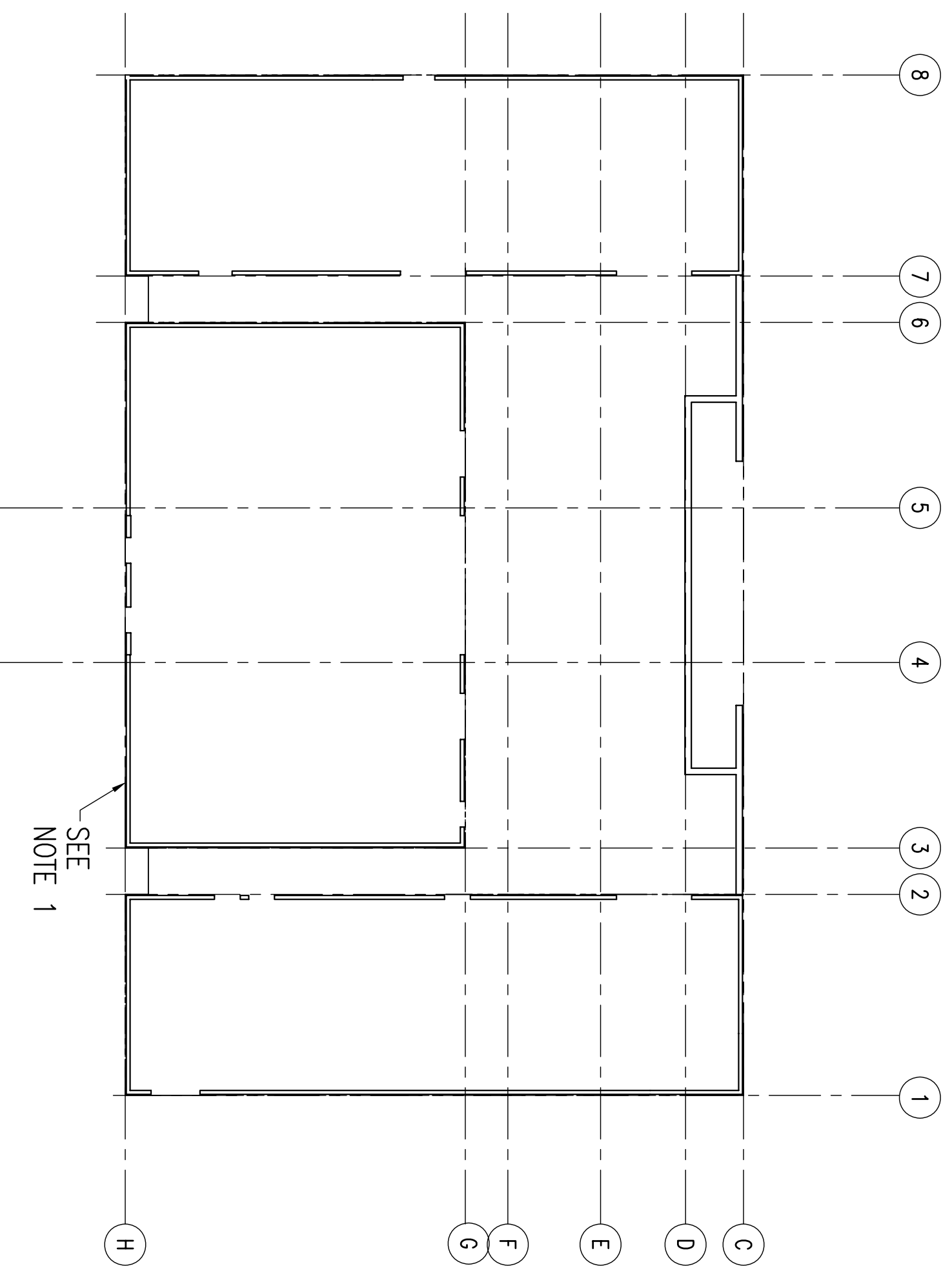
MATRIX
2140 Lawrence Street, Suite 200
Chicago, Illinois 60628
Tel: 312.467.2000
Fax: 312.467.2001
www.matrixinc.com

ISSUED FOR ADDENDUM #1 08/27/09
ISSUED FOR BID 08/05/09
ISSUED FOR CONST. DOCUMENTS 100% 07/22/09
ISSUED FOR CONST. DOCUMENTS 100% 06/28/09
ISSUED FOR CONST. DOCUMENTS 60% 06/05/09
ISSUED FOR DESIGN DEVELOPMENT 05/15/09
ISSUED FOR SCHEMATIC DESIGN 03/19/09
REVISIONS DATE

PROJECT MANAGER
DIRECTOR OF ENGINEERING
PROJ. MGR.: GM
DESIGNER: JTM/B
DRAWN: MB
CHECKED: JTM/B
SCALE: AS NOTED
DATE: AUGUST, 2009
SPEC. NO.: XXX-XX
MEC. JOB NO.: 08009.00

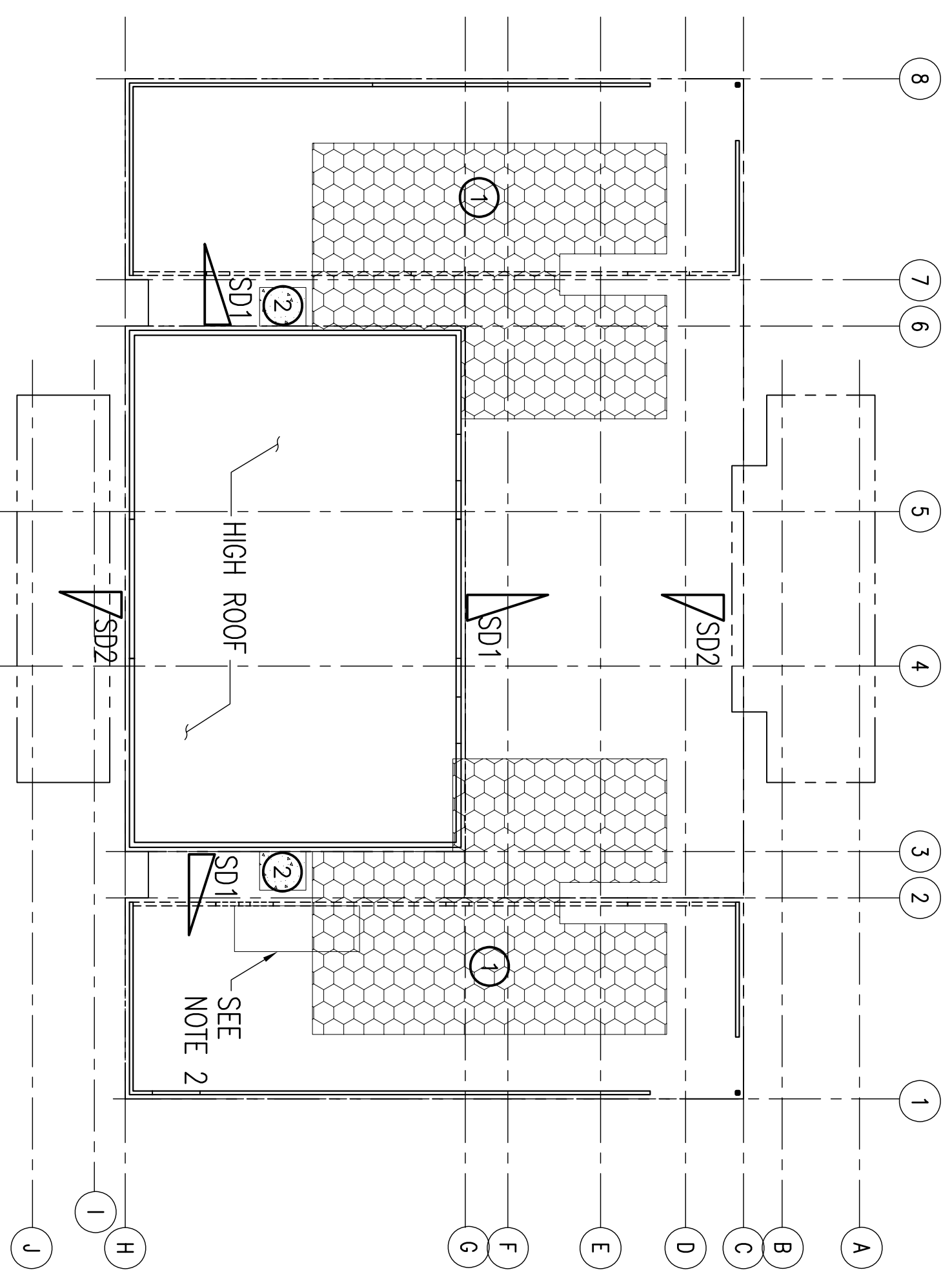
SHEET INFORMATION
Chicago Park District - Fieldhouse
WALTER PEARCE PARK
7700 S. PULASKI
CHICAGO, IL 60628

PARK NO./PROJECT NO.: BH#0824.00 MEC#09009
CURB DIAGRAM AND LOAD DIAGRAM AND SCHEDULE
DRAWING NO. S002



PLAN CURB LAYOUT DIAGRAM AT FIRST FLOOR

NOTES:
1) CURBS ARE SHOWN FOR REFERENCE ONLY. REFER TO ARCHITECTURAL DRAWINGS FOR SIZE AND LOCATIONS OF ALL CURBS, SEE STRUCTURAL PLANS AND DETAILS FOR REQUIRED CURB REINFORCING.



PLAN LOW/HIGH ROOF LOAD DIAGRAM

LOAD DIAGRAM SCHEDULE			
SYMBOL	HATCH	LOAD LOCATION	REMARKS
①		GREEN ROOF	SUPER IMPOSED DEAD LOAD (PSF) 30 PSF SNOW LOAD / ROOF LIVE LOAD (PSF) 25 PSF NOTE 1
②		2" PRECAST CONC. DRAIN PADS	25 PSF NOTE 1
③		LOW ROOF	25 PSF NOTE 1
④		HIGH ROOF	25 PSF NOTE 1

NOTES:
1) ROOF LOADS SHALL INCLUDE SNOW DRIFT LOADS WHERE APPLICABLE. SEE SNOW DRIFT SCHEDULE BELOW (SNOW DRIFT SCHEDULE DOES NOT INCLUDE BALANCED SNOW LOAD).
2) RTU-1 = 1350LBS MAX. SEE MEP DRAWINGS FOR SIZE AND LOCATION OF UNIT/SUPPORTS.

SNOW DRIFT SCHEDULE		
DRIFT TYPE	Pdrlft	Wdrlft
SD1	48 PSF	11'-0"
SD2	38 PSF	8'-8"

