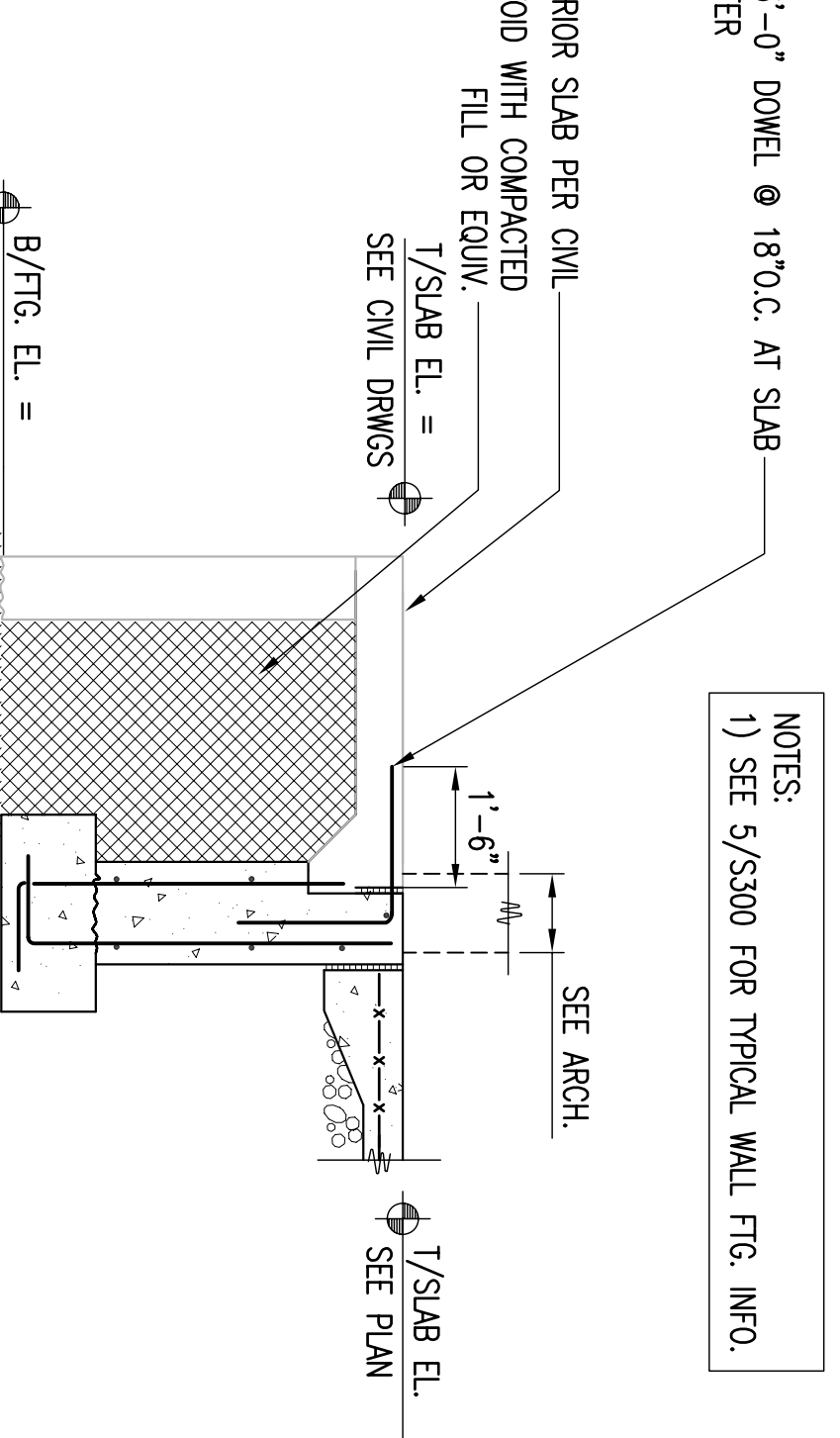
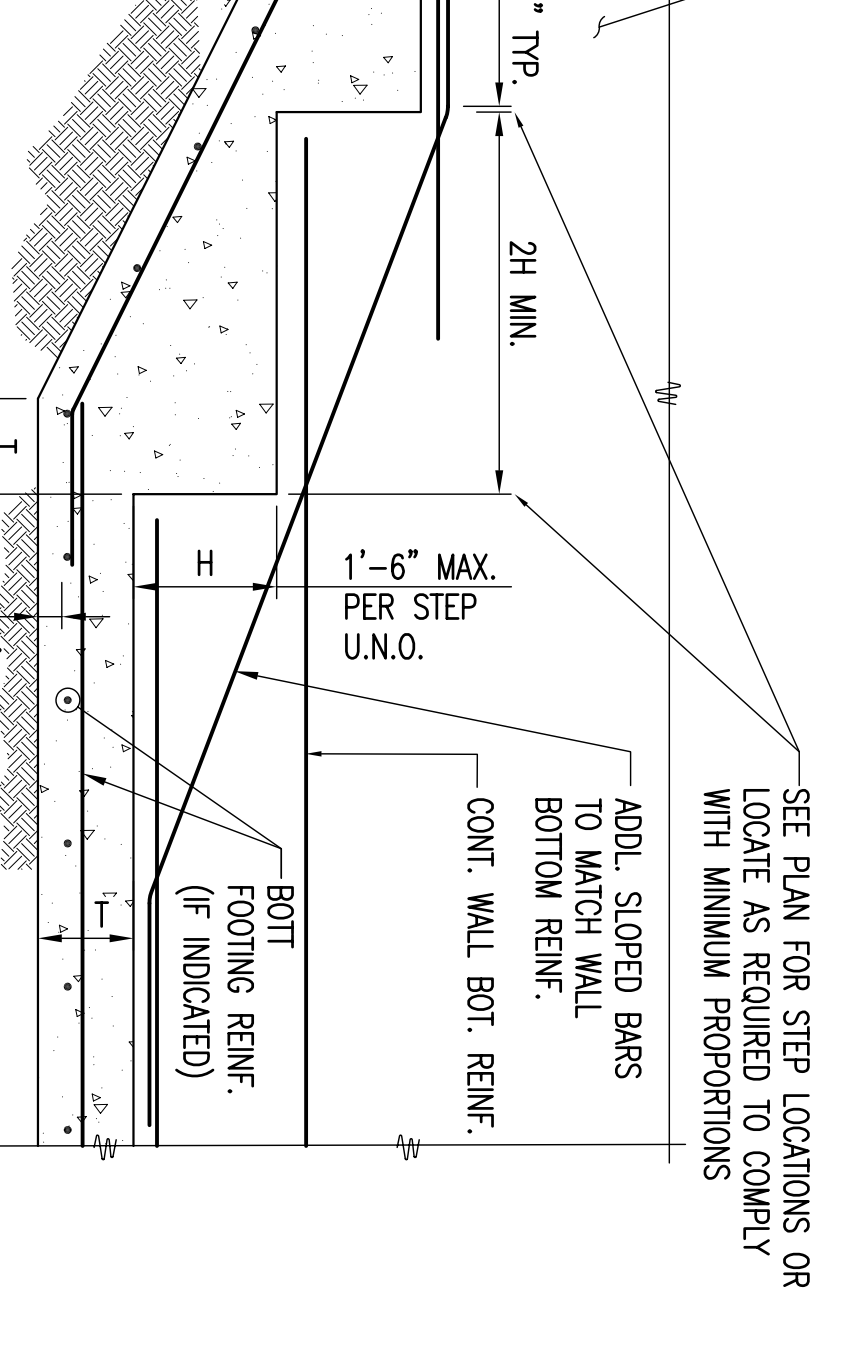
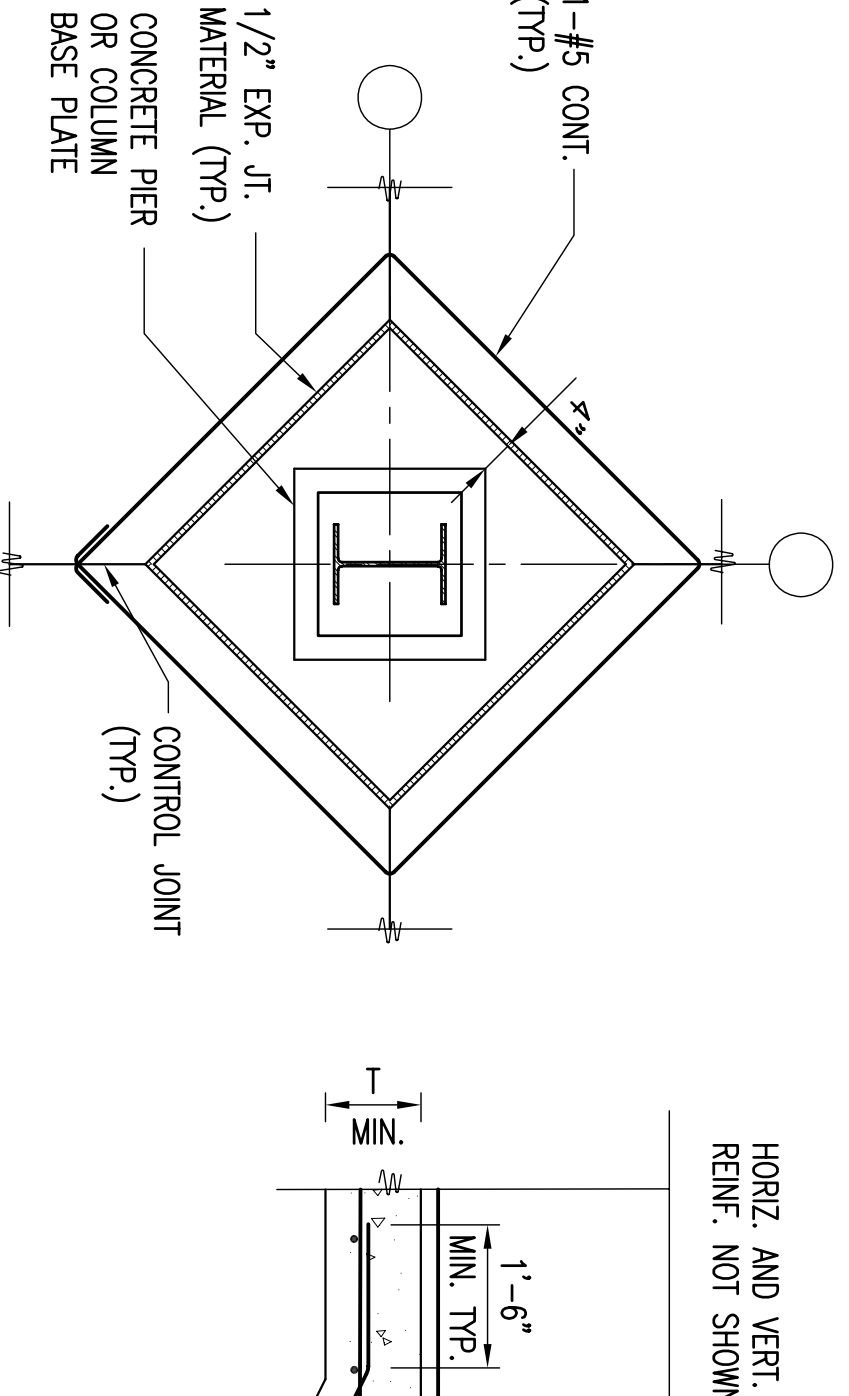
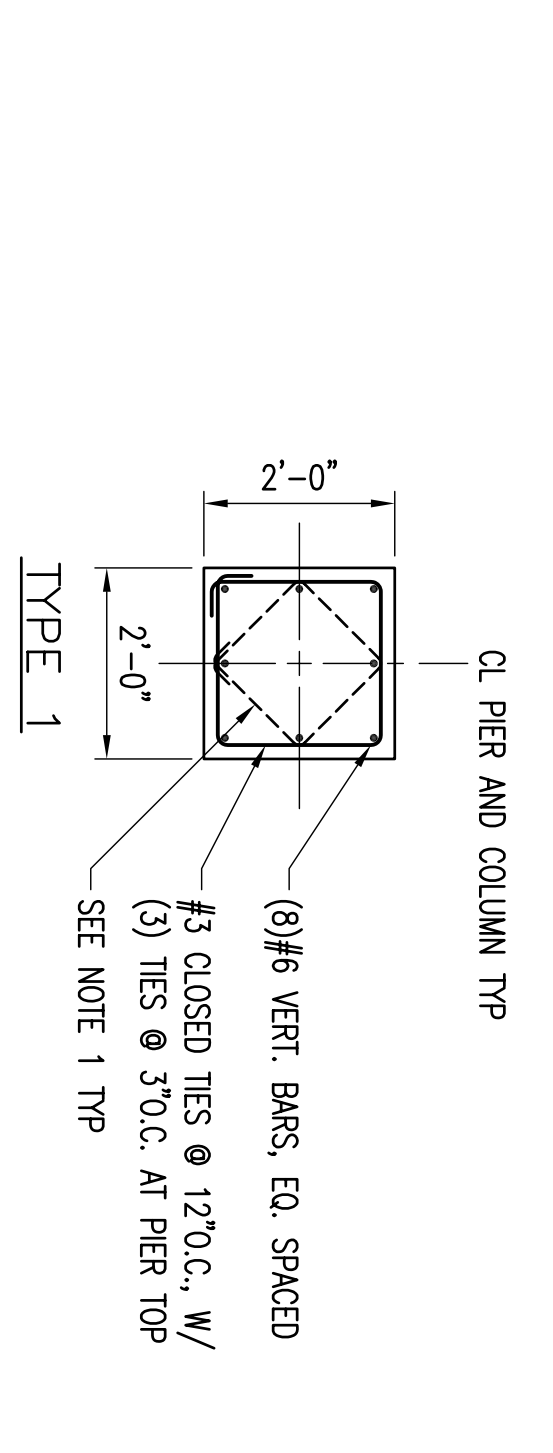


NOTE:  
1. DETAILER SHALL CONFIGURE TIES PER LATEST ACI CRITERIA AND COORDINATE THE LAYOUT SO AS NOT TO CONFLICT WITH ANCHOR BOLT LAYOUT.  
2. HORIZONTAL AND VERTICAL REINFORCEMENT SHALL BE CONTINUOUS THROUGH PIER.

NOTE:  
WHERE THE SOIL AT THIS ELEVATION IS NOT CAPABLE OF SUPPORTING THE REQUIRED BEARING CAPACITY, EXCAVATE TO A SUITABLE BEARING ELEVATION, REPLACE THE UNSUITABLE SOIL WITH APPROVED FILL OR LEAN CONCRETE. SEE GENERAL NOTES.

NOTE:  
WHERE COLUMN IS IN EXTERIOR CONDITION, COAT ALL EXPOSED STEEL BELOW GRADE WITH COAL TAR EPOXY.

NOTE:  
1) SEE 5/S300 FOR TYPICAL WALL FTG. INFO.



CHICAGO PARK DISTRICT  
541 NORTH FABRANKS  
CHICAGO, ILLINOIS 60611

BOOTH HANSEN

Architectural - Interior - Exterior  
333 South Dear Paines Street  
Chicago, Illinois 60601

MATRIX  
333 South Dear Paines Street  
Chicago, Illinois 60601

ISSUED FOR APPENDIX #1	08/27/09
ISSUED FOR BID	08/05/09
ISSUED FOR CONST. DOCUMENTS 100%	07/22/09
ISSUED FOR CONST. DOCUMENTS 60%	06/28/09
ISSUED FOR DESIGN	05/15/09
ISSUED FOR SCHEMATIC DESIGN	03/19/09
REVISIONS DATE	
PROJECT NUMBER	
PROJECT NAME	
DIRECTOR OF ENGINEERING	
PREL. MGR.:	GM
DESIGNER:	JIMB
DRAWN:	MB
CHECKED:	JIMB
SCALE:	AS NOTED
DATE:	AUGUST, 2009
SPEC. NO.:	XXXX-XX
MEC. JOB NO.:	09009.00
SHEET INFORMATION	

Chicago Park District - Fieldhouse

WALTER PIERCE PARK 7700 S. MICHIGAN CHICAGO, IL 60635

PARK NO./PROJECT NO. BH#092410 MEC#09009 FOUNDATION DETAILS AND SECTIONS

DRAWING NO. S300