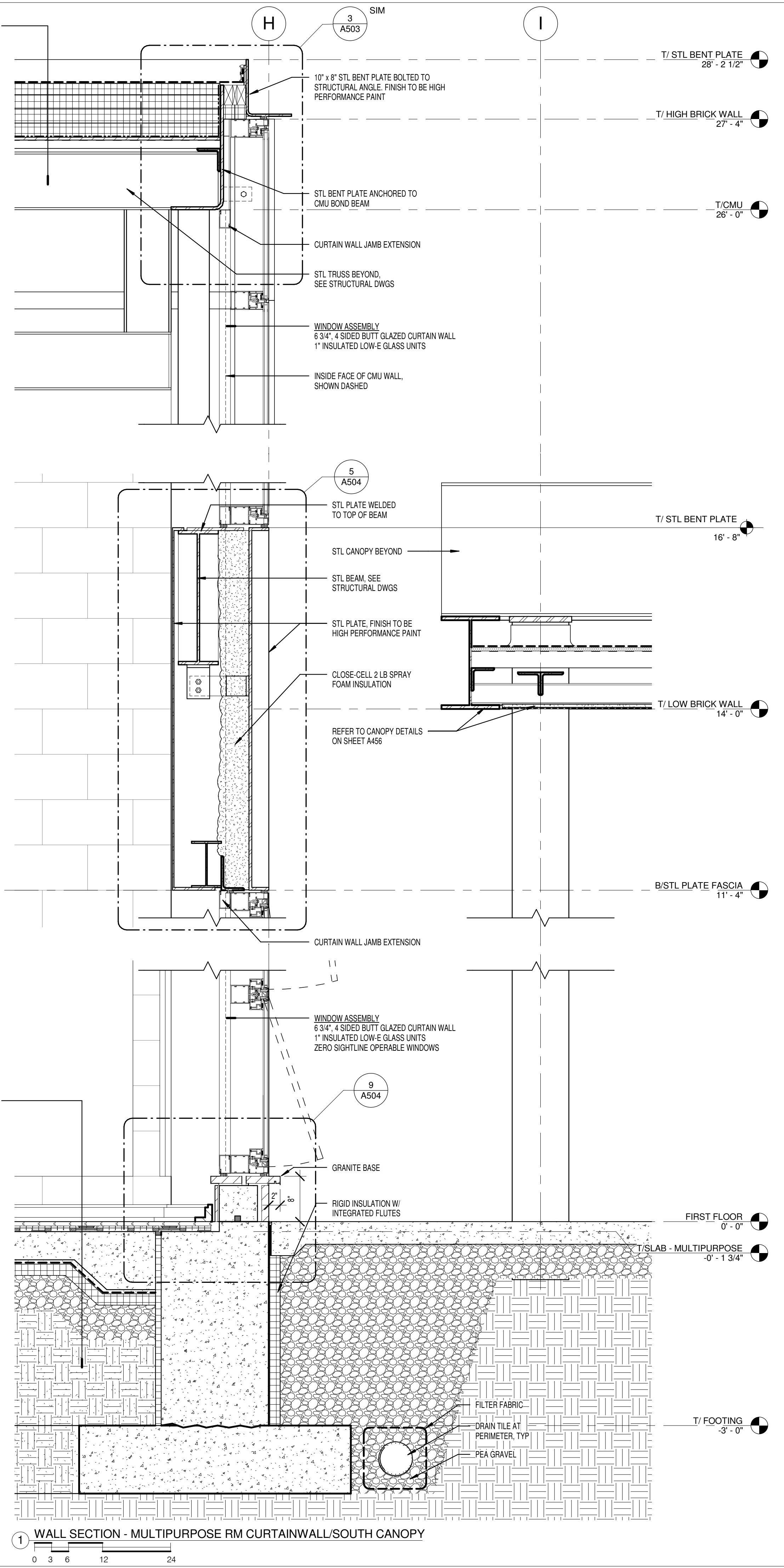


ROOF ASSEMBLY (AT MULTIPURPOSE RM)
 80 MIL SINGLE PLY FULLY ADHERED PVC ROOFING MEMBRANE
 TAPERED INSULATION WHERE REQ'D
 (2) LAYERS POLYISOCYANURATE INSULATION W/ STAGGERED JOINTS, 5 1/2" TOTAL, R-31
 SELF-ADHESIVE VAPOR RETARDER MEMBRANE
 5/8" ROOF SHEATHING
 1 1/2" METAL DECK
 SLOPED BAR JOISTS (SEE STRUCT DWGS)



3 WALL SECTION - TYP INTERIOR LOAD-BEARING CORRIDOR WALL

2 3D DETAIL - MULTIPURPOSE RM CURTAINWALL/SOUTH CANOPY

1 WALL SECTION - MULTIPURPOSE RM CURTAINWALL/SOUTH CANOPY



CHICAGO PARK DISTRICT
 541 NORTH FAIRBANKS
 Chicago, Illinois 60611

BOOTH HANSEN

Architecture - Interiors - Planning
 338 South Des Plaines Street
 Chicago, Illinois 60661

| | |
|--------------------------------------|----------|
| ISSUED FOR ADDENDUM #1 | 08/27/09 |
| ISSUED FOR BID | 08/05/09 |
| ISSUED FOR CONST. DOCUMENTS 100% | 07/22/09 |
| ISSUED FOR CONST. DOCS. 90% / PERMIT | 06/26/09 |
| ISSUED FOR CONST. DOCUMENTS 60% | 06/05/09 |
| ISSUED FOR DESIGN DEVELOPMENT | 05/18/09 |
| ISSUED FOR SCHEMATIC DESIGN | 03/13/09 |

REVISIONS DATE

| | |
|-------------------------|--|
| PROJECT MANAGER | |
| PROJECT MANAGER | |
| DIRECTOR OF ENGINEERING | |

| | |
|-------------|-------------|
| PROJ. MGR.: | GH |
| DESIGNER: | LB/SC/BB |
| DRAWN: | SC/BB |
| CHECKED: | LB/GH/CS |
| SCALE: | NOTED |
| DATE: | AUGUST 2009 |
| SPEC. NO.: | XXXX-XX |
| JOB NO.: | 0824.00 |

SHEET INFORMATION

Chicago Park District - Fieldhouse

VALLEY FORGE PARK
 7001 W. 59TH STREET
 CHICAGO, IL 60638
 PARK #371

PARK NO./PROJECT NO.
 0824.00

WALL SECTIONS

A454
 DRAWING NO.