



CHICAGO PARK DISTRICT

541 NORTH FAIRBANKS  
Chicago, Illinois  
60611

BOOTH HANSEN

Architecture • Interiors • Planning  
333 South Des Plaines Street  
Chicago, Illinois 60661



ISSUED FOR ADDENDUM #1 08/27/09

ISSUED FOR BID 08/05/09

ISSUED FOR CONST. DOCUMENTS 100% 07/22/09

ISSUED FOR CONST. DOCS. 90% / PERMIT 06/26/09

ISSUED FOR CONST. DOCUMENTS 60% 06/05/09

ISSUED FOR DESIGN DEVELOPMENT 05/15/09

ISSUED FOR SCHEMATIC DESIGN 03/13/09

REVISIONS DATE

PROJECT MANAGER

PROJ. MGR.: JK

DESIGNER: JK/KK/NC

DRAWN: JK/KK/NC

CHECKED: EMB

SCALE: AS NOTED

DATE: AUGUST 2009

SPEC. NO.: XXXX-XX

JOB NO.: 0824.00

SHEET INFORMATION

Chicago Park District - Fieldhouse

VALLEY FORGE PARK

7001 W. 59TH STREET  
CHICAGO, IL 60638  
PARK #371

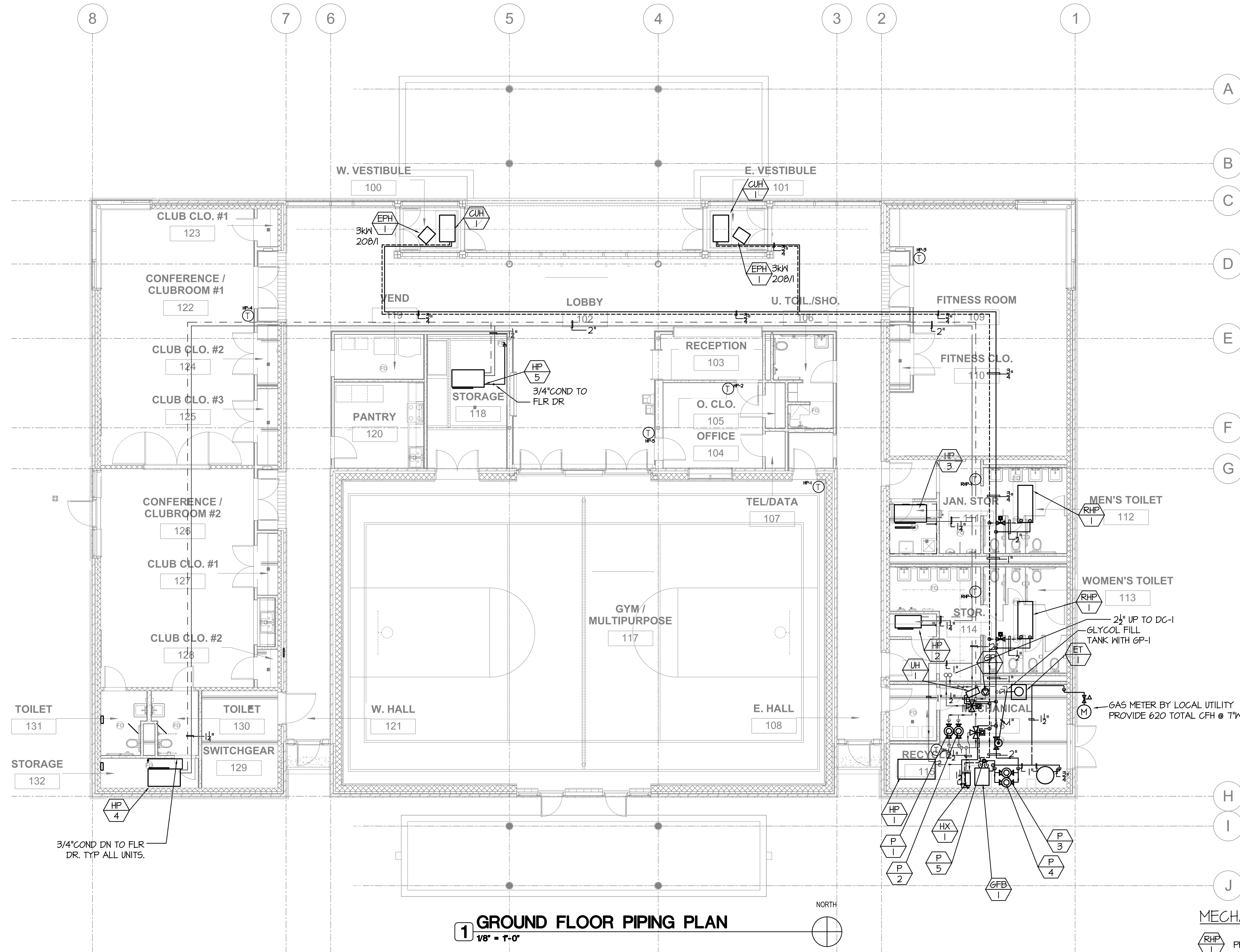
PARK NO./PROJECT NO.

0824.00

MECHANICAL GROUND FLOOR PIPING PLAN

M101.1

DRAWING NO.



1 GROUND FLOOR PIPING PLAN  
1/8" = 1'-0"

MECHANICAL CONSTRUCTION KEY NOTES

- RHP PRICE MODEL RPM HOT WATER RADIANT HEATING PANELS. (1) 24" X 24" PIPED WITH (1) 24" X 36" TO MAKE A 24" X 60" PANEL. TOTAL BTU/HR = 474, 0.5 GPM, 1/2" COPPER TUBES, ALUMINUM CEILING TILES, ALUMINUM HEAT SINKS, AND FIELD PIPED TOGETHER ABOVE CEILING. CONTROL IS A 2-POSITION VALVE WITH A LINE VOLTAGE THERMOSTAT ON THE WALL.
- GFB SEE SHEET M004.1 FOR ENLARGED SCALE MECHANICAL ROOM PLAN
- BOILER IS CONDENSING TYPE, PIPE 3/4" CONDENSATE DRAIN TO FLOOR DRAIN USING TYPE K COPPER PIPING. SEE DETAIL #6 ON SHEET M-003.1