



CHICAGO PARK DISTRICT

541 NORTH FAIRBANKS
Chicago, Illinois
60611

BOOTH HANSEN

Architecture • Interiors • Planning
333 South Des Plaines Street
Chicago, Illinois 60661



ISSUED FOR ADDENDUM #1 08/27/09

ISSUED FOR BID 08/05/09

ISSUED FOR CONST. DOCUMENTS 100% 07/22/09

ISSUED FOR CONST. DOCS. 90% / PERMIT 06/26/09

ISSUED FOR CONST. DOCUMENTS 60% 06/05/09

ISSUED FOR DESIGN DEVELOPMENT 05/15/09

ISSUED FOR SCHEMATIC DESIGN 03/13/09

REVISIONS DATE

PROJECT MANAGER

PROJ. MGR.: JK

DESIGNER: JK/KK/NC

DRAWN: JK/KK/NC

CHECKED: EMB

SCALE: AS NOTED

DATE: AUGUST 2009

SPEC. NO.: XXXX-XX

JOB NO.: 0824.00

SHEET INFORMATION

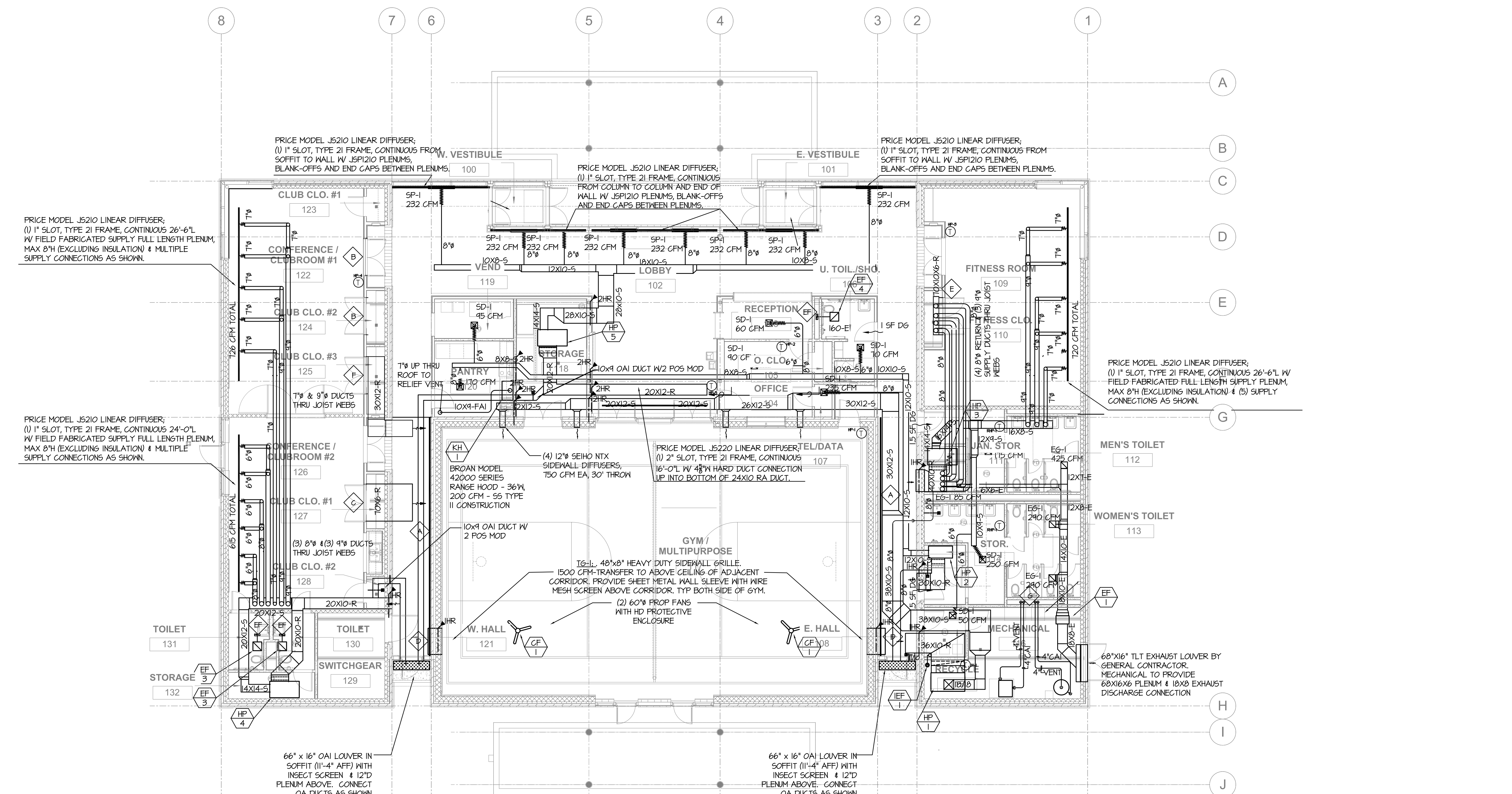
Chicago Park District - Fieldhouse

VALLEY FORGE PARK
7001 W. 59TH STREET
CHICAGO, IL 60638
PARK #371

PARK NO./PROJECT NO.
0824.00

MECHANICAL GROUND FLOOR VENT PLAN

M101.2
DRAWING NO.



1 GROUND FLOOR VENT PLAN
1/8" = 1'-0"

MECHANICAL CONSTRUCTION KEY NOTES

- A PRICE MODEL J5215 LINEAR DIFFUSER, (2) 15" SLOTS, TYPE 21 FRAME, CONTINUOUS SLOT DIFFUSER THE FULL LENGTH OF THE MULTIPURPOSE ROOM HALLWAY, OPEN TO THE RA CEILING PLENUM ABOVE W/ SIGHT Baffle.
B PRICE MODEL LBP LINEAR BAR 10"X4"4", CORE 15B, T50 FLANGED FRAME, SECURED TO TOP DOOR FRAME OPENING WITH SHEET METAL BLANK-OFF PANEL IN CLOSET.
C PRICE MODEL LBP LINEAR BAR 10"X4"4", CORE 15B, T50 FLANGED FRAME, SECURED TO TOP DOOR FRAME OPENING FOR RETURN AIR. CONNECT 10X6 RA TRANSFER DUCT FROM BACK OF FRAME TO THROUGH THE CORRIDOR WALL INTO RA PLENUM AS SHOWN.
D PRICE MODEL LBP LINEAR BAR 48"X8"4", CORE 15B, 125 NARROW FRAME BORDER, SECURED BETWEEN BLOCKS WITH MORTAR. EXTEND 48X8 RA TRANSFER DUCT TO RA PLENUM AS SHOWN WITH 1 HR FD IN WALL.
E PRICE MODEL LBP LINEAR BAR 10"X4"4", CORE 15B, T50 FLANGED FRAME, SECURED TO TOP DOOR FRAME OPENING FOR RETURN AIR. CONNECT 10X6 RA TRANSFER DUCT FROM BACK OF FRAME AND EXTEND 10' CREATING RA PLENUM FOR (4) TOP 8" DUCT CONNECTIONS.
F PRICE MODEL LBP LINEAR BAR 10"X4"4", CORE 15B, T50 FLANGED FRAME, SECURED TO TOP DOOR FRAME OPENING FOR RETURN AIR. CONNECT 10X6 RA TRANSFER DUCT FROM BACK OF FRAME TO 30X12 TRANSFER DUCT AND EXTEND TO RA PLENUM AS SHOWN.
G 4" CATEGORY IV VENT & 4" PVC COMBUSTION AIR INTAKE DUCTS EXTEND UP AND THROUGH THE ROOF WITH VENT TERMINATION KITS. TYPICAL FOR BOTH THE BOILER AND DOMESTIC WATER HEATER.
H ALL DUCTS LISTED TO BE STUBBED THROUGH THE CORRIDOR WALL, AND LEFT OPEN TO THE RA PLENUM ABOVE THE CORRIDOR CEILING ARE TO BE PROVIDED WITH 1/4"X 1/4" SCREEN OVER OPEN RA DUCT IN PLENUM & 1 HR FD. ALL RETURN AIR DUCTS RUNNING THROUGH THE JOIST WEBS ARE ABOVE ALL SUPPLY DUCTS AND SUSPENDED EQUIPMENT.
I ALL CEILING EXHAUST FANS WILL HAVE THE DISCHARGE DUCTS EXTENDED UP THROUGH THE ROOF AND TERMINATED WITH A GOOSENECK FOR RELIEF. (3.25" X 10", SIZE VARIES PER UNIT MANUFACTURER) SEE DETAIL #16 ON SHEET M003.2 SEE SHEET M004.2 FOR ENLARGED SCALE MECHANICAL ROOM PLAN