

Issuance

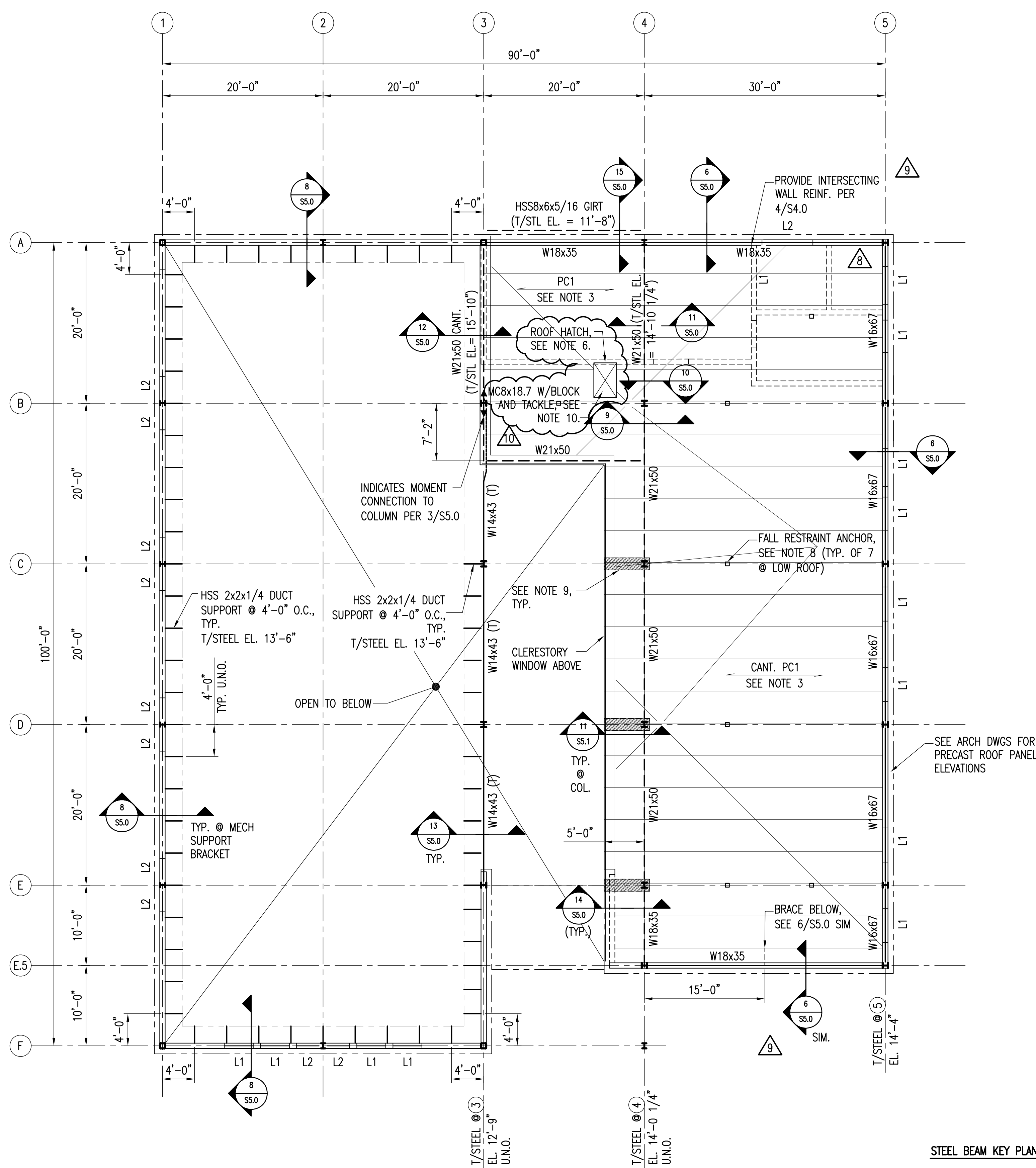
Mark	Description	Date
3	DESIGN DEVELOPMENT	4/15/09
4	60% CD DEVELOPMENT	5/29/09
5	PERMIT	7/01/09
6	BID	7/23/09
7	RE-ISSUE FOR BID	8/24/09
8	BID ADDENDUM 01	9/15/09
9	BID ADDENDUM 02	9/16/09
10	BID ADDENDUM 03	9/22/09

PBC Project Name: Greater Grand Crossing Branch Library
PBC Project No.: 08060
AOR Project No.: 08350
MEC Project No.: 08050.2

Title
ROOF FRAMING PLANS

Sheet

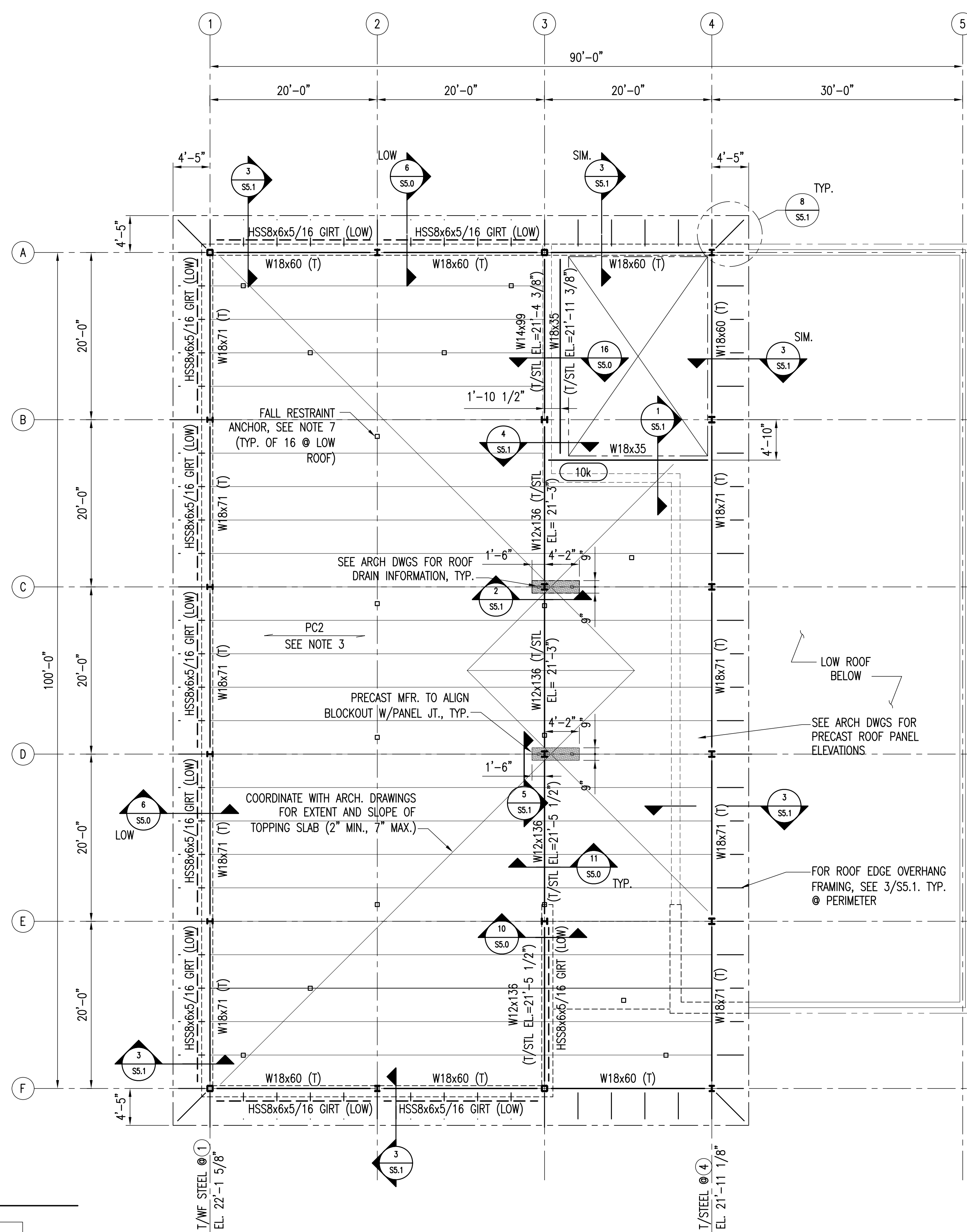
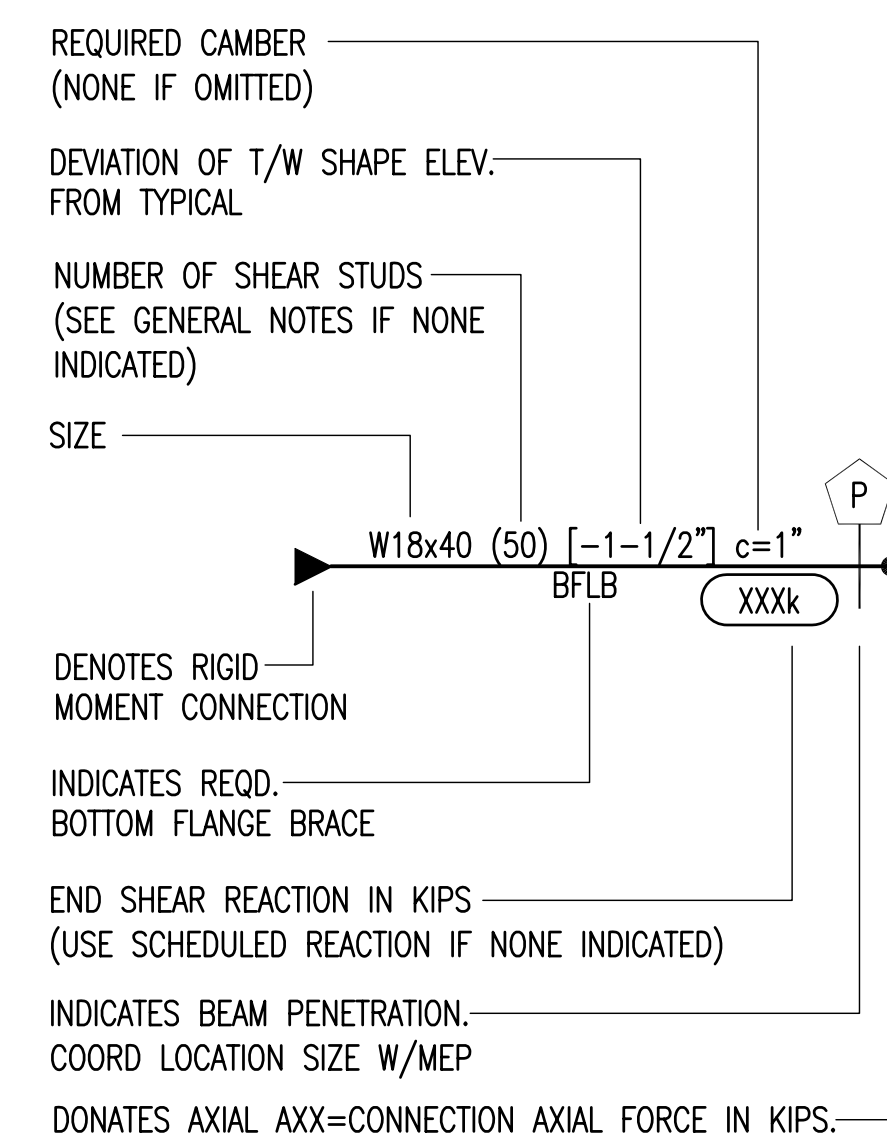
S1.2



LOW ROOF FRAMING PLAN
1/8"=1'-0"

- NOTES:
- VERIFY ALL DIMENSIONS AND ELEVATIONS WITH ARCH. DWGS. PRIOR TO CONSTRUCTION.
 - SEE S0.1 FOR STRUCTURAL GENERAL NOTES.
 - PC1 INDICATES 10" PRECAST PRESTRESSED HOLLOW CORE CONCRETE SLAB WITH SLOPED LIGHTWEIGHT CONCRETE (110 PCF MAX.) TOPPING (2" MIN., 7" MAX.) W/WWF 6x6-W1.4xW1.4.
 - T/STEEL EL. = SEE PLAN
 - "LX" INDICATES STEEL LINTEL BELOW. SEE SCHEDULE ON SHT. S4.0.
 - PRECAST MANUFACTURER TO DESIGN & PROVIDE HEADERS AS REQUIRED AT MEP OPENINGS, COORDINATE W/MEP DWGS FOR SIZE & LOCATIONS OF ALL OPENINGS.
 - (T) INDICATES END TORSION CONNECTION REQUIRED, SEE 7/SS.1.
 - FALL RESTRAINT ANCHOR, COORDINATE WITH ARCH. DWGS. FOR LOCATIONS. SEE 12/SS.1 FOR INFORMATION.
 - PROVIDE LT. GAGE POUR STOP AS REQ'D, INFILL W/STRUCT. CONCRETE.
 - PROVIDE MC8x18.7 ACROSS ROOF HATCH OPENING FOR BLOCK AND TACKLE ASSEMBLY BELOW, SEE 14/SS.1 FOR SUPPORT INFORMATION AND ARCH DWGS FOR CHANNEL LOCATION. PRECAST MANUFACTURER TO DESIGN FOR 500LBS EA END OF MC8 SUPPORT BEAM.

STEEL BEAM KEY PLAN:



HIGH ROOF FRAMING PLAN
1/8"=1'-0"

- NOTES:
- VERIFY ALL DIMENSIONS AND ELEVATIONS WITH ARCH. DWGS. PRIOR TO CONSTRUCTION.
 - SEE S0.1 FOR STRUCTURAL GENERAL NOTES.
 - PC2 INDICATES 12" PRECAST PRESTRESSED HOLLOW CORE CONCRETE SLAB WITH SLOPED LIGHTWEIGHT CONCRETE (110 PCF MAX.) TOPPING (2" MIN., 7" MAX.) W/WWF 6x6-W1.4xW1.4.
 - T/STEEL EL. = SEE PLAN.
 - (T) INDICATES END TORSION CONNECTION REQUIRED, SEE 7/SS.1.
 - T/HSS GIRT EL. = 16'-3 1/2"
 - FALL RESTRAINT ANCHOR, COORDINATE WITH ARCH. DWGS. FOR LOCATIONS. SEE 12/SS.1 & 13/SS.1 FOR INFORMATION.