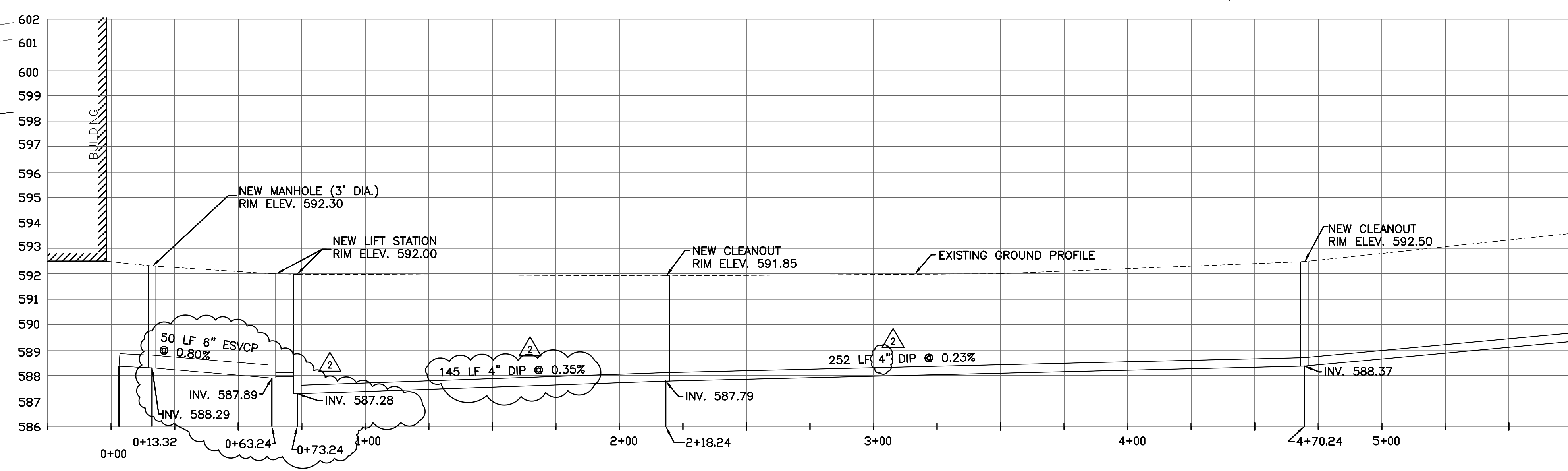
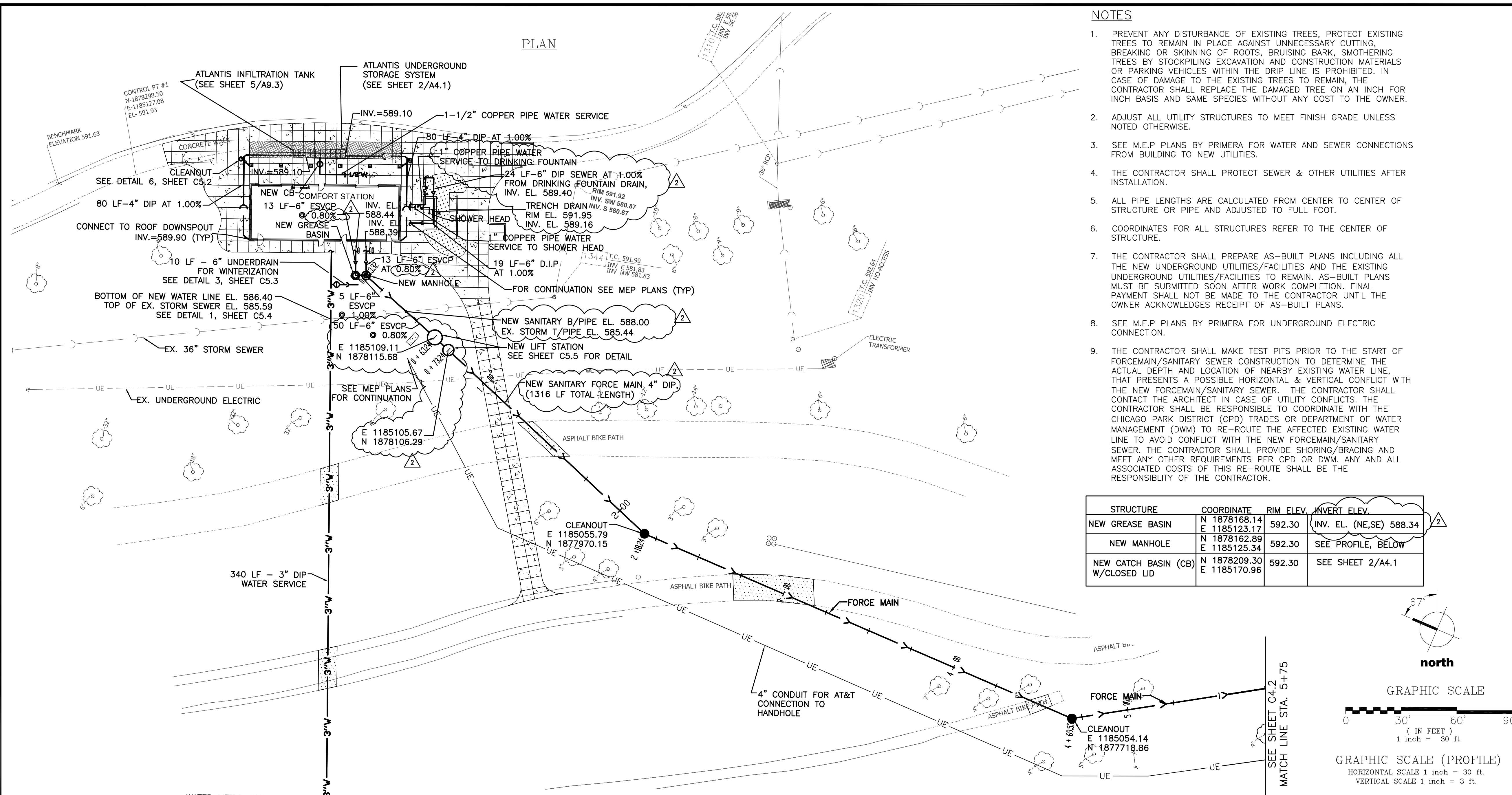
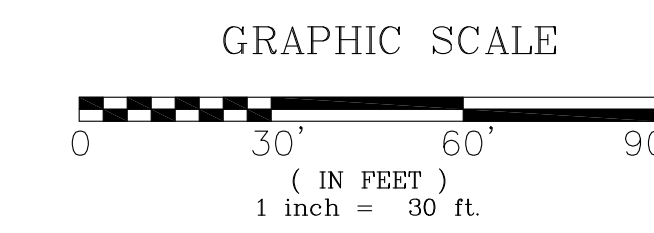
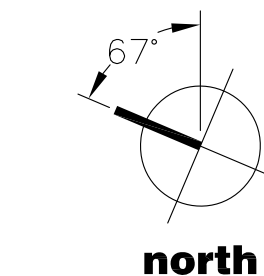


NOTES

1. PREVENT ANY DISTURBANCE OF EXISTING TREES, PROTECT EXISTING TREES TO REMAIN IN PLACE AGAINST UNNECESSARY CUTTING, BREAKING OR SKINNING OF ROOTS, BRUISING BARK, SMOTHERING TREES BY STOCKPILING EXCAVATION AND CONSTRUCTION MATERIALS OR PARKING VEHICLES WITHIN THE DRIP LINE IS PROHIBITED. IN CASE OF DAMAGE TO THE EXISTING TREES TO REMAIN, THE CONTRACTOR SHALL REPLACE THE DAMAGED TREE ON AN INCH FOR INCH BASIS AND SAME SPECIES WITHOUT ANY COST TO THE OWNER.
2. ADJUST ALL UTILITY STRUCTURES TO MEET FINISH GRADE UNLESS NOTED OTHERWISE.
3. SEE M.E.P PLANS BY PRIMERA FOR WATER AND SEWER CONNECTIONS FROM BUILDING TO NEW UTILITIES.
4. THE CONTRACTOR SHALL PROTECT SEWER & OTHER UTILITIES AFTER INSTALLATION.
5. ALL PIPE LENGTHS ARE CALCULATED FROM CENTER TO CENTER OF STRUCTURE OR PIPE AND ADJUSTED TO FULL FOOT.
6. COORDINATES FOR ALL STRUCTURES REFER TO THE CENTER OF STRUCTURE.
7. THE CONTRACTOR SHALL PREPARE AS-BUILT PLANS INCLUDING ALL THE NEW UNDERGROUND UTILITIES/FACILITIES AND THE EXISTING UNDERGROUND UTILITIES/FACILITIES TO REMAIN. AS-BUILT PLANS MUST BE SUBMITTED SOON AFTER WORK COMPLETION. FINAL PAYMENT SHALL NOT BE MADE TO THE CONTRACTOR UNTIL THE OWNER ACKNOWLEDGES RECEIPT OF AS-BUILT PLANS.
8. SEE M.E.P PLANS BY PRIMERA FOR UNDERGROUND ELECTRIC CONNECTION.
9. THE CONTRACTOR SHALL MAKE TEST PITS PRIOR TO THE START OF FORCEMAIN/SANITARY SEWER CONSTRUCTION TO DETERMINE THE ACTUAL DEPTH AND LOCATION OF NEARBY EXISTING WATER LINE, THAT PRESENTS A POSSIBLE HORIZONTAL & VERTICAL CONFLICT WITH THE NEW FORCEMAIN/SANITARY SEWER. THE CONTRACTOR SHALL CONTACT THE ARCHITECT IN CASE OF UTILITY CONFLICTS. THE CONTRACTOR SHALL BE RESPONSIBLE TO COORDINATE WITH THE CHICAGO PARK DISTRICT (CPD) TRADES OR DEPARTMENT OF WATER MANAGEMENT (DWM) TO RE-ROUTE THE AFFECTED EXISTING WATER LINE TO AVOID CONFLICT WITH THE NEW FORCEMAIN/SANITARY SEWER. THE CONTRACTOR SHALL PROVIDE SHORING/BRACING AND MEET ANY OTHER REQUIREMENTS PER CPD OR DWM. ANY AND ALL ASSOCIATED COSTS OF THIS RE-ROUTE SHALL BE THE RESPONSIBILITY OF THE CONTRACTOR.

STRUCTURE	COORDINATE	RIM ELEV.	INVERT ELEV.
NEW GREASE BASIN	N 1878168.14 E 1185123.17	592.30	(INV. EL. (NE,SE) 588.34)
NEW MANHOLE	N 1878162.89 E 1185125.34	592.30	SEE PROFILE, BELOW
NEW CATCH BASIN (CB) W/CLOSED LID	N 1878209.30 E 1185170.96	592.30	SEE SHEET 2/A4.1



- LEGEND**
- UE — UNDERGROUND ELECTRIC
 - 3"W — WATER SERVICE
 - - - - UNDERDRAIN
 - - - - STORM SEWER
 - - - - SANITARY LINE
 - - - - EXISTING SANITARY LINE
 - - - - EXISTING WATER LINE
 - ⊙ MANHOLE, DETAIL 3, SHEET C5.2
 - ⊙ GREASE BASIN, DETAIL 2, SHEET C5.2
 - ⊙ WATER VALVE BOX, DETAIL 5, SHEET C5.1
 - CLEANOUT, DETAIL 1, SHEET C5.2
 - CATCH BASIN
 - LIFT STATION, DETAIL SHEET C5.5
 - ⊠ WATER METER VAULT, DETAIL 2, SHEET C5.4
 - CLEANOUT, SEE DETAIL 6, SHEET C5.2

6	10.21.2009	ISSUED FOR ADDENDUM #2
5	10.20.2009	ISSUED FOR ADDENDUM #1
4	9.25.2009	ISSUED FOR BID
3	9.21.2009	ISSUED FOR PERMIT/95% DESIGN
2	9.04.2009	ISSUED FOR 90% DESIGN
1	3.31.2009	ISSUED FOR 30% DESIGN

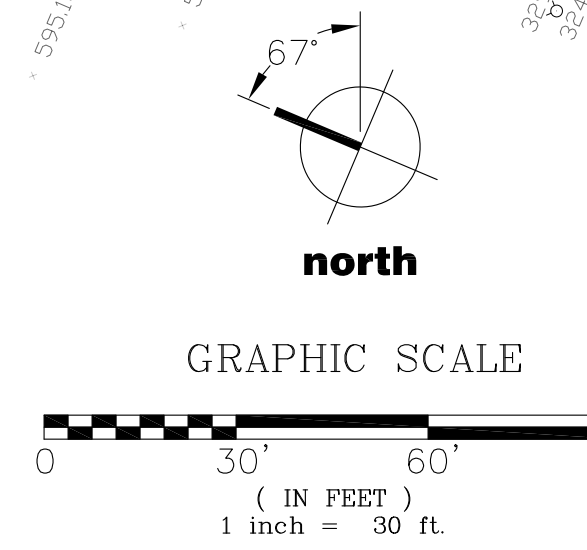
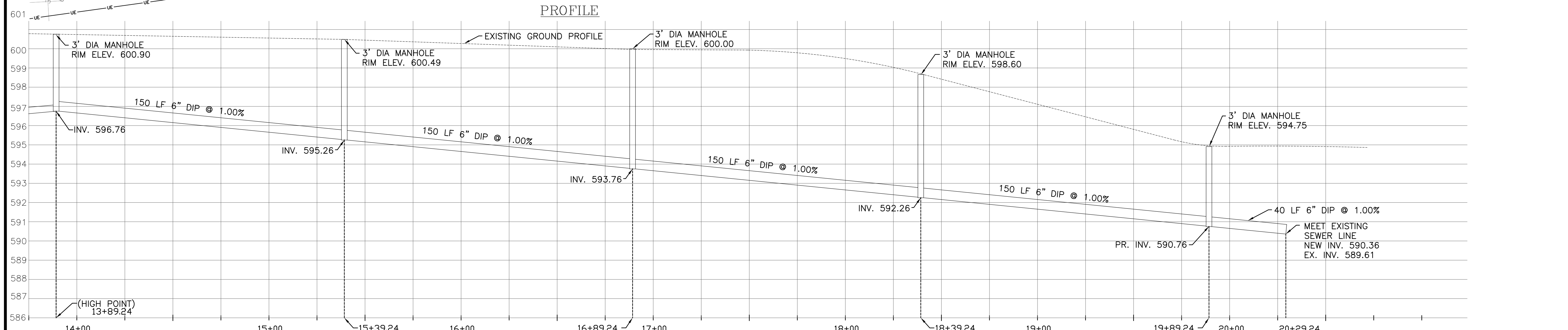
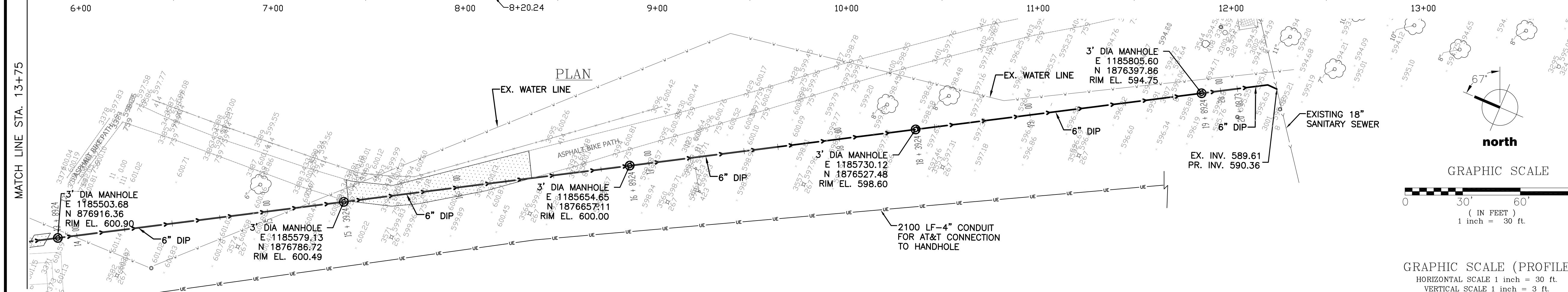
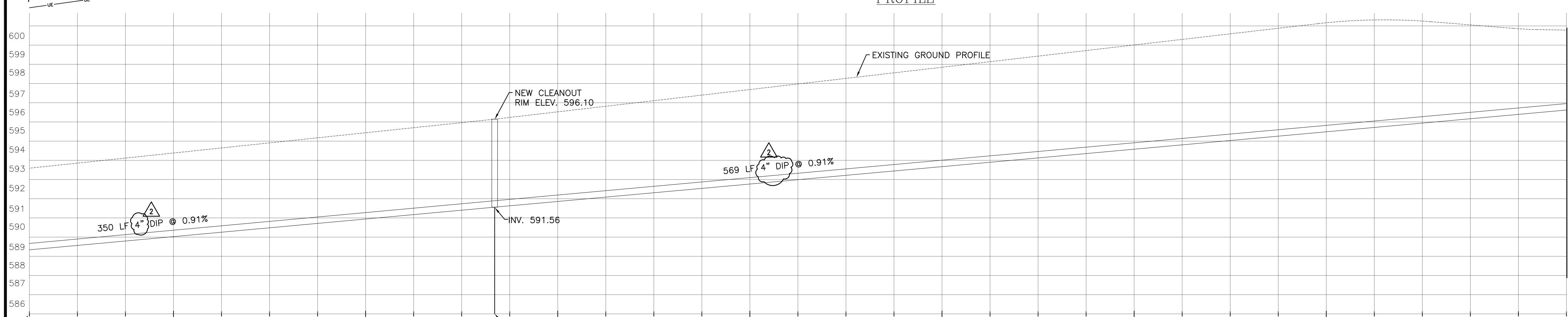
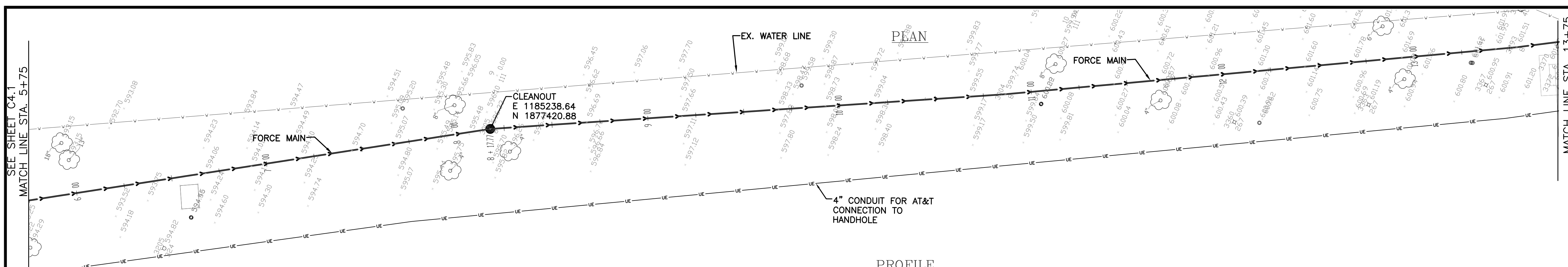
PROJECT
40TH STREET COMFORT STATION
CHICAGO, IL

SHEET TITLE
UTILITY PLAN AND PROFILE

DRAWN: RP
 CHECKED: HG
 APPROVED:
 JOB NO. 09.01.08

SHEET NO.
C4.1

© 2005, Muller & Muller, Ltd.
 Muller & Muller, Ltd. expressly reserves its common law copyright and other property rights in these plans. These plans are not to be reproduced, changed or copied in any form or manner whatsoever, nor are they to be assigned to any third party, without first obtaining the expressed written consent of Muller & Muller, P.C., Ltd.

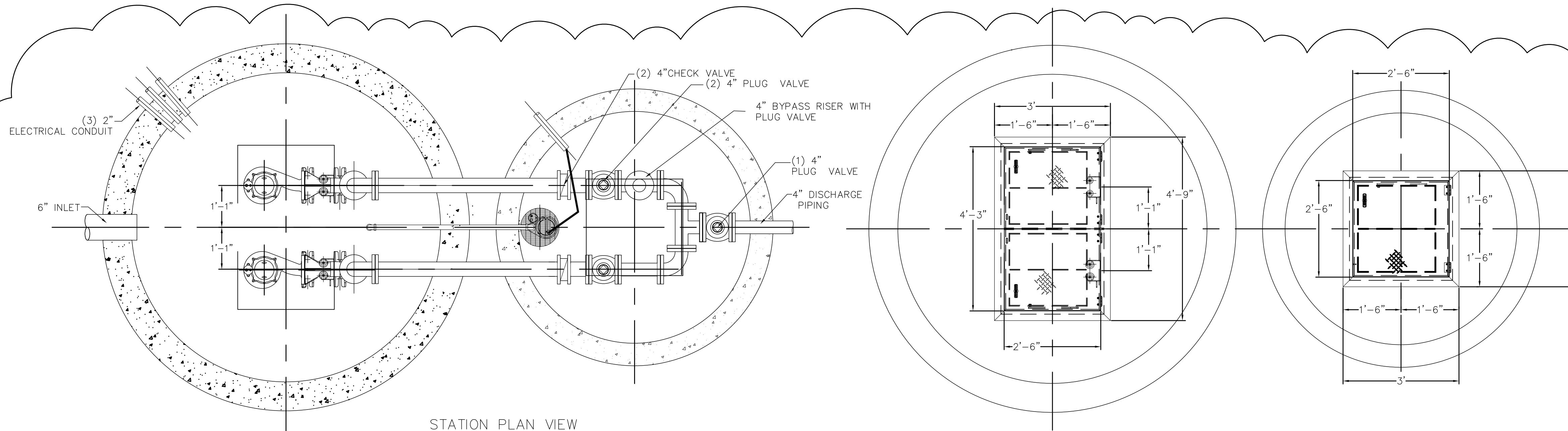


6	10.21.2009	ISSUED FOR ADDENDUM #2
5	10.20.2009	ISSUED FOR ADDENDUM #1
4	9.25.2009	ISSUED FOR BID
3	9.21.2009	ISSUED FOR PERMIT/95% DESIGN
2	9.04.2009	ISSUED FOR 90% DESIGN
1	3.31.2009	ISSUED FOR 30% DESIGN

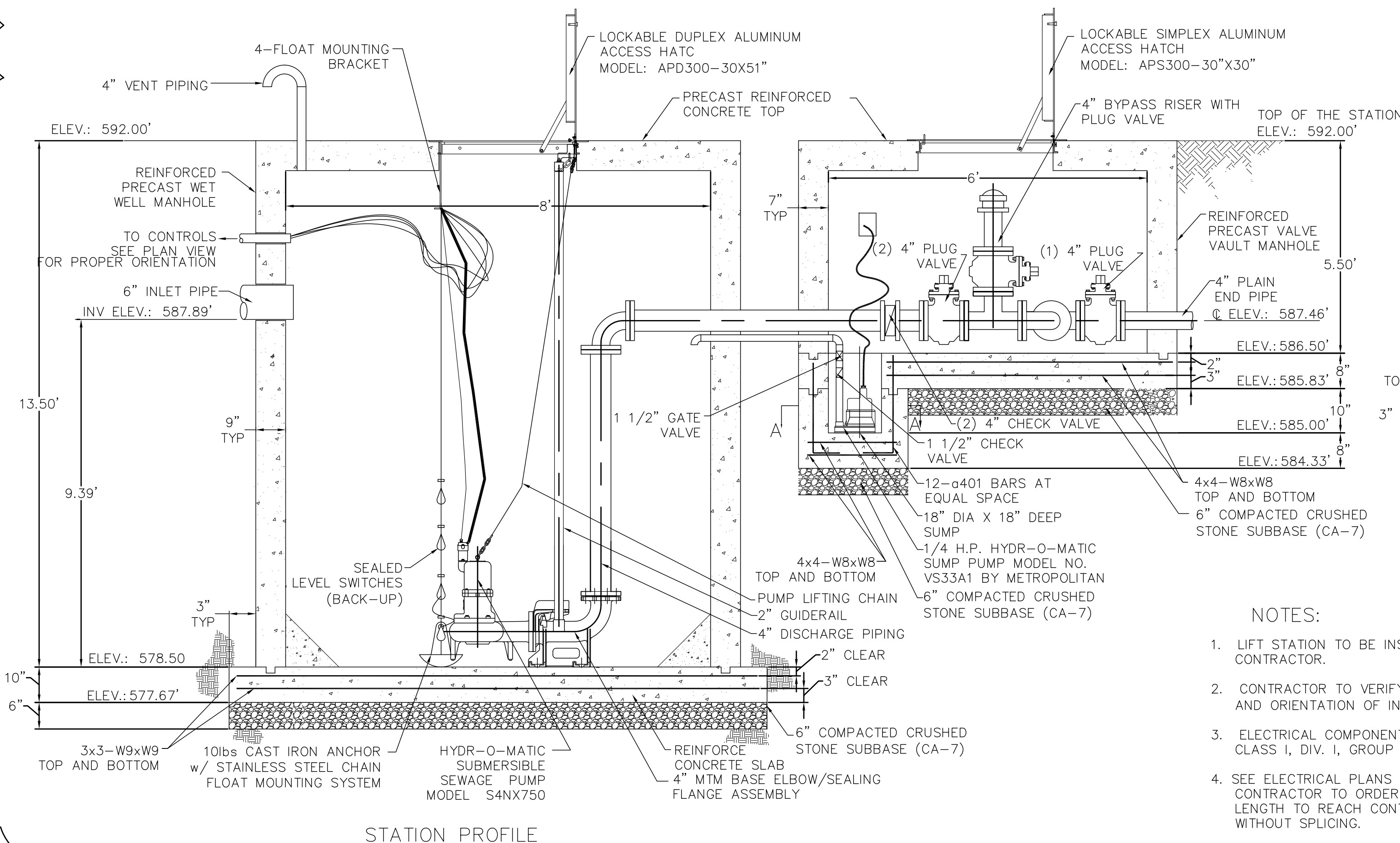
PROJECT
**40TH STREET
 COMFORT STATION
 CHICAGO, IL**

SHEET TITLE
UTILITY PLAN AND PROFILE

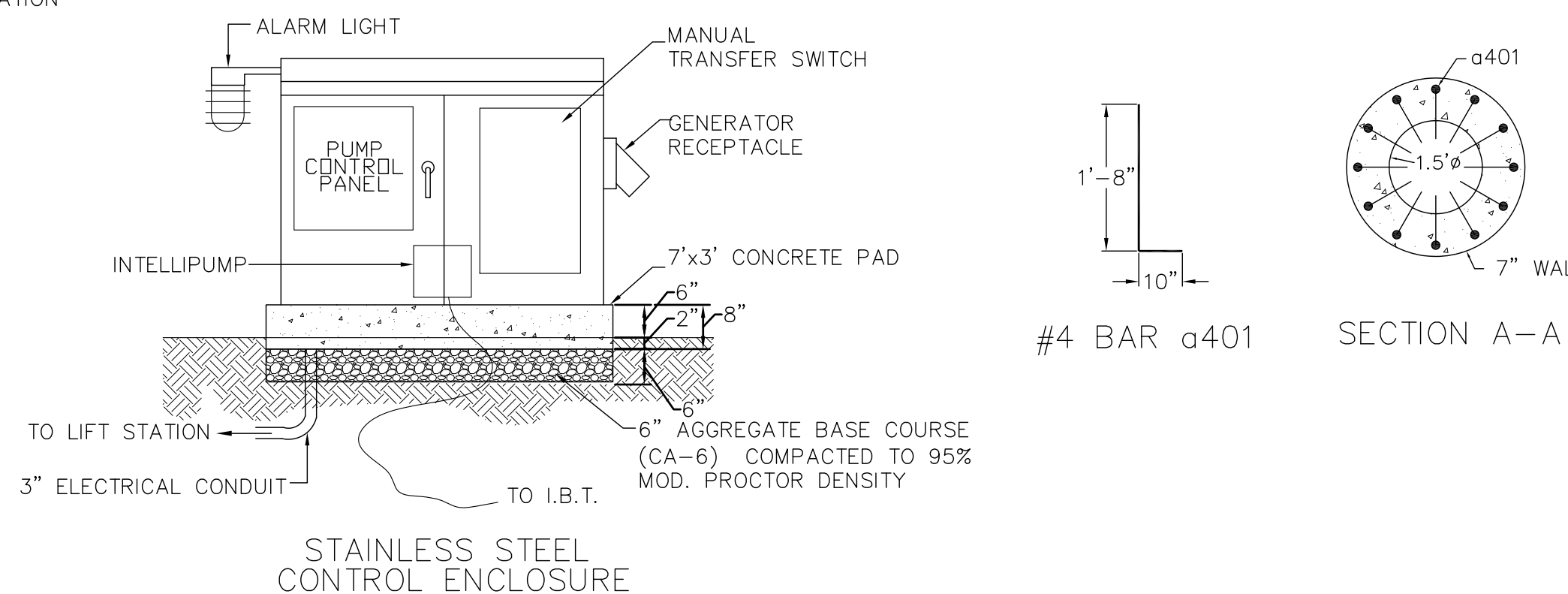
DRAWN: RP	SHEET NO.
CHECKED: HG	C4.2
APPROVED:	
JOB NO. 09.01.08	



STATION PLAN VIEW



STATION PROFILE



STAINLESS STEEL CONTROL ENCLOSURE

FLOAT SWITCH ELEVATIONS

HIGH LEVEL ALARM	ELEV.: 584.00
TWO PUMPS ON (OVERRIDE)	ELEV.: 583.00
ONE PUMP ON	ELEV.: 582.00
PUMPS OFF	ELEV.: 580.50

NOTES:

- LIFT STATION TO BE INSTALLED BY AN EXPERIENCED AND QUALIFIED CONTRACTOR.
- CONTRACTOR TO VERIFY ALL DIMENSIONS, ELEVATIONS, PIPING LAYOUT, AND ORIENTATION OF INLET(S), DISCHARGE AND CONDUIT(S).
- ELECTRICAL COMPONENTS IN THE WET WELL SHALL BE RATED FOR CLASS I, DIV. I, GROUP C & D LOCATIONS
- SEE ELECTRICAL PLANS FOR DETAILS AND LOCATION OF CONTROL PANEL. CONTRACTOR TO ORDER CONTROL AND POWER CORDS OF SUFFICIENT LENGTH TO REACH CONTROL PANEL FROM POINT OF ORIGIN ON PUMPS WITHOUT SPLICING.
- REINFORCED PRECAST MANHOLE SECTIONS SHALL BE MANUFACTURED IN ACCORDANCE WITH ASTM C-478.
- PROVIDE LADDER RUNGS IN THE WET WELL MANHOLE AND VALVE VAULT MANHOLE.
- USE CAST-IN-PLACE REINFORCED CONCRETE SLAB OR PRECAST CONCRETE SLAB.
 CONCRETE : f_c = 4000 PSI @ 28 DAYS
 REINFORCEMENT: f_y = 60,000 PSI

6	10.21.2009	ISSUED FOR ADDENDUM #2
5	10.20.2009	ISSUED FOR ADDENDUM #1
4	9.25.2009	ISSUED FOR BID
3	9.21.2009	ISSUED FOR PERMIT/95% DESIGN
2	9.04.2009	ISSUED FOR 90% DESIGN
1	3.31.2009	ISSUED FOR 30% DESIGN

PROJECT
**40TH STREET
 COMFORT STATION
 CHICAGO, IL**

SHEET TITLE
CIVIL DETAILS

DRAWN: RP	SHEET NO.
CHECKED: HG	C5.5
APPROVED:	
JOB NO. 09.01.08	