

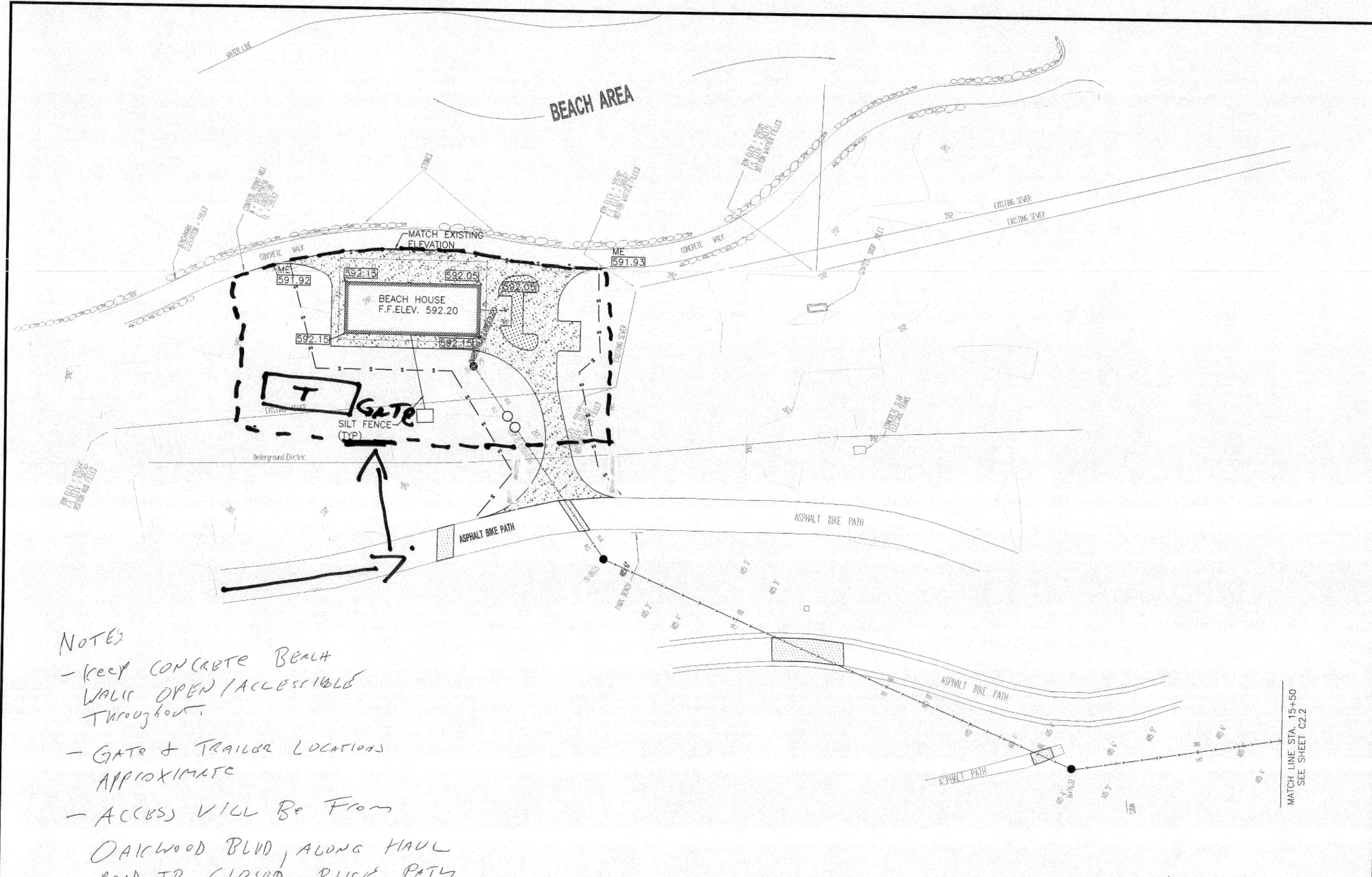
FOR REFERENCE ONLY  
ADDENDUM 4  
10/27/2009

1 07.07.2009 ISSUED FOR 90% CHECK SET

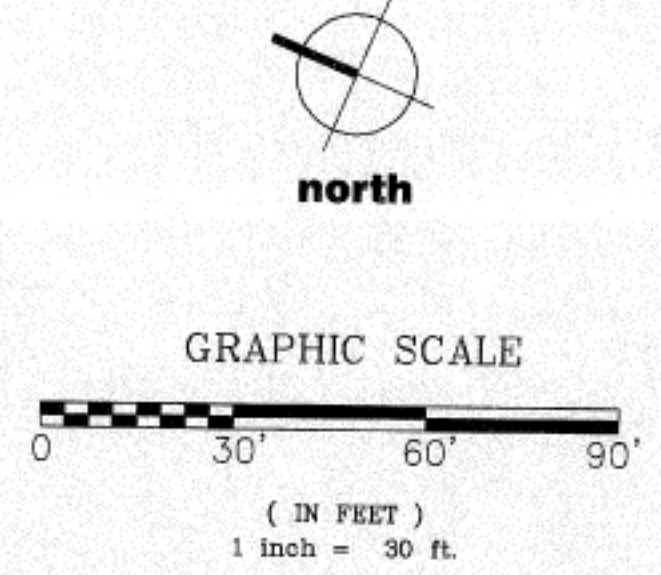
PROJECT  
**40TH STREET COMFORT STATION CHICAGO, IL**

SHEET TITLE  
**SOIL EROSION AND SEDIMENT CONTROL PLAN**

DRAWN: AV	SHEET NO.
CHECKED: HG	<b>C0.3</b>
APPROVED:	
JOB NO. 09.01.08	



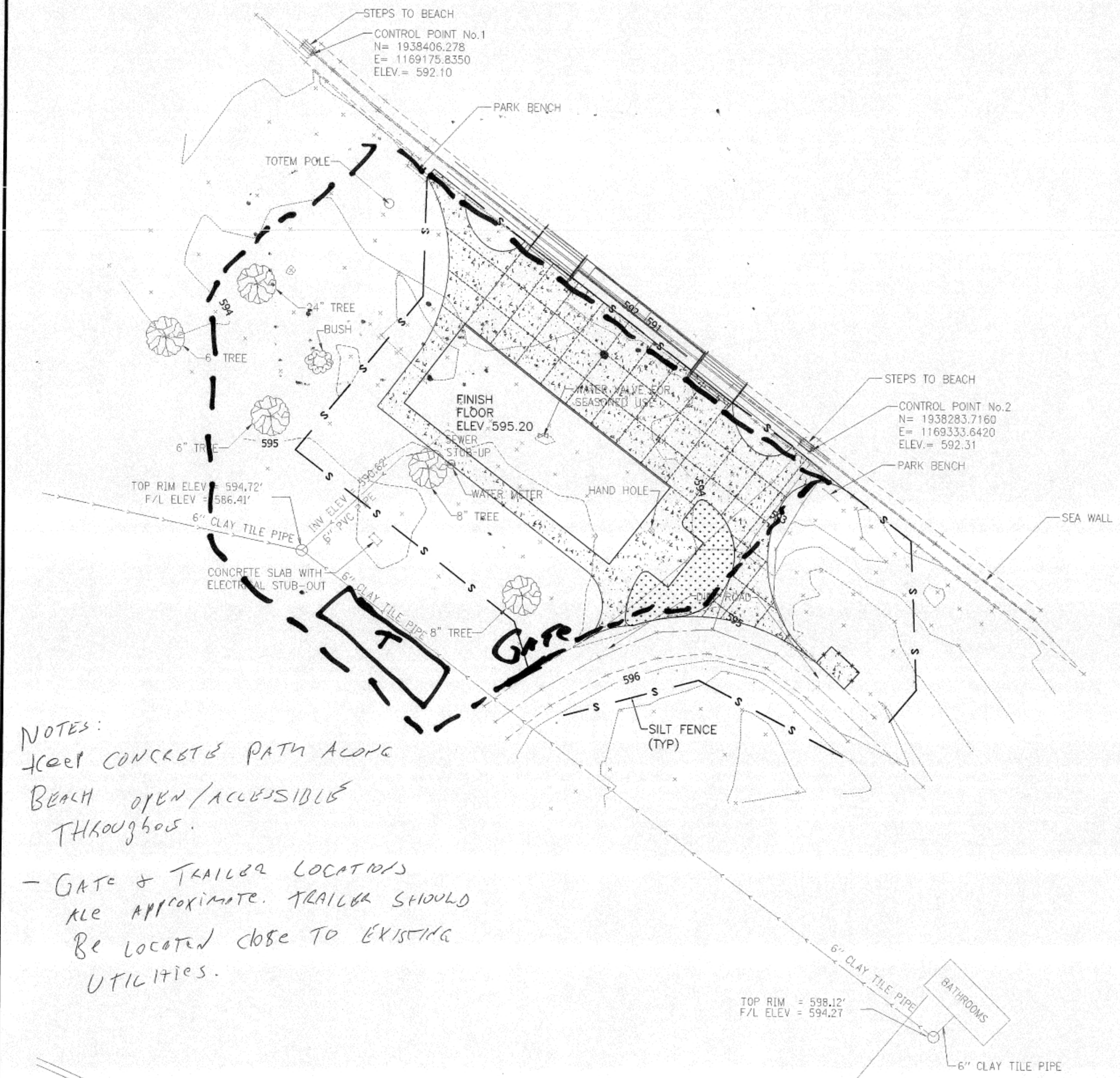
NOTES  
 - KEEP CONCRETE BEACH WALK OPEN / ACCESSIBLE THROUGHOUT.  
 - GATE & TRAILER LOCATIONS APPROXIMATE  
 - ACCESS WILL BE FROM OAKWOOD BLVD, ALONG HAUL ROAD TO CLOSED BIKE PATH.





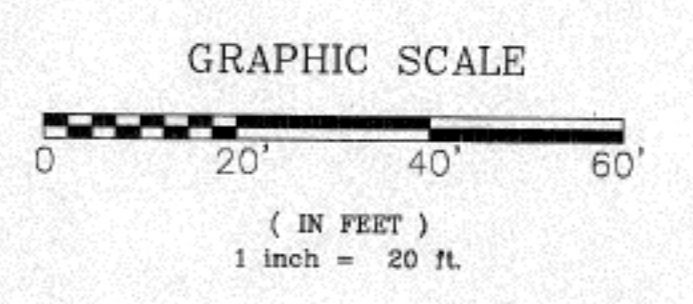
Muller & Muller, Ltd. expressly reserves its common law copyright and other property rights in these plans. These plans are not to be reproduced, changed or copied in any form or manner whatsoever, nor are they to be assigned to any third party, without first obtaining the expressed written consent of Muller & Muller, P.C., Ltd.

**FOR REFERENCE ONLY**  
**ADDENDUM 4**  
**10/27/2009**



**NOTES:**  
 KEEP CONCRETE PATH ALONG BEACH OPEN/ACCESSIBLE THROUGHOUT.  
 - GATE & TRAILER LOCATIONS ARE APPROXIMATE. TRAILER SHOULD BE LOCATED CLOSE TO EXISTING UTILITIES.

- LEGEND**
- Bush
  - Tree
  - Water Valve
  - Water Meter
  - Hand Hole



1 07.07.2009 ISSUED FOR 90% CHECK SET

PROJECT  
**OSTERMAN BEACH COMFORT STATION CHICAGO, IL**

SHEET TITLE  
**SOIL EROSION AND SEDIMENT CONTROL PLAN**

DRAWN: LC	SHEET NO.
CHECKED: HG	<b>C03</b>
APPROVED:	
JOB NO. 09.02.09	