

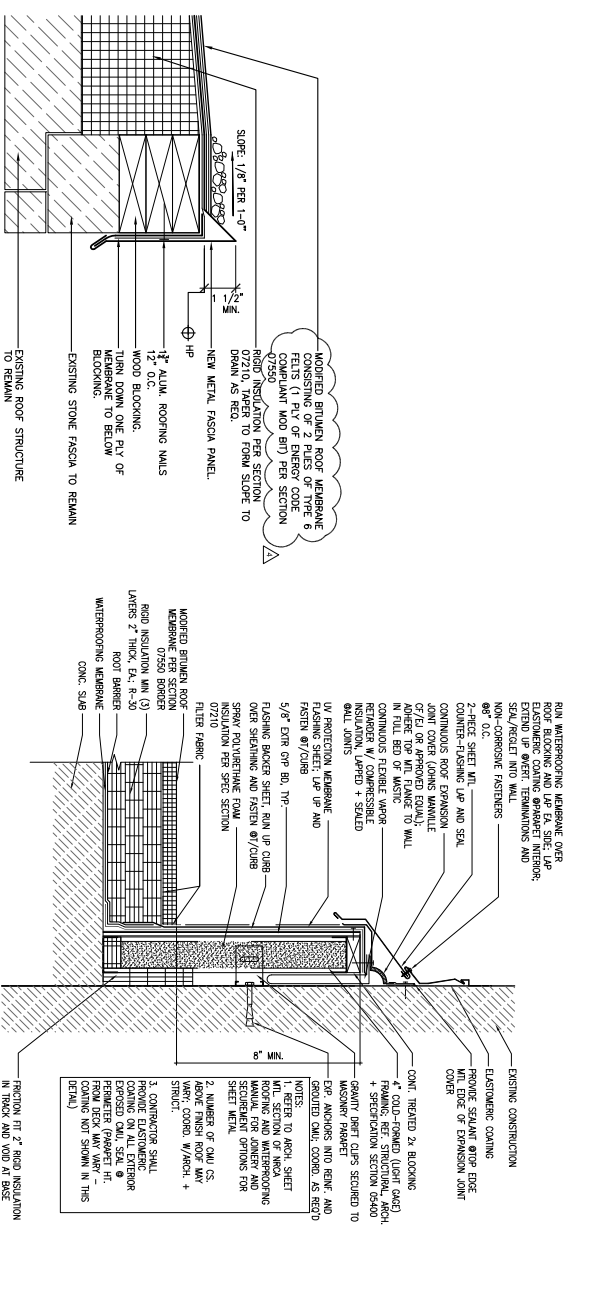
**ENVIRONMENTAL WARNINGS**

THE PRC HAS EMPLOYED AN ENVIRONMENTAL CONSULTANT TO PREPARE AN ENVIRONMENTAL SCOPING DOCUMENT AND MANAGEMENT PLAN. THIS DOCUMENT IS CLARIFYING AND NOT A GUARANTEE. NO ASSURANCE IS MADE THAT THE INFORMATION CONTAINED HEREIN IS COMPLETELY ACCURATE. THE CONSULTANT HAS BEEN GIVEN BY PRC AND THE OWNER'S ENVIRONMENTAL CONSULTANT.

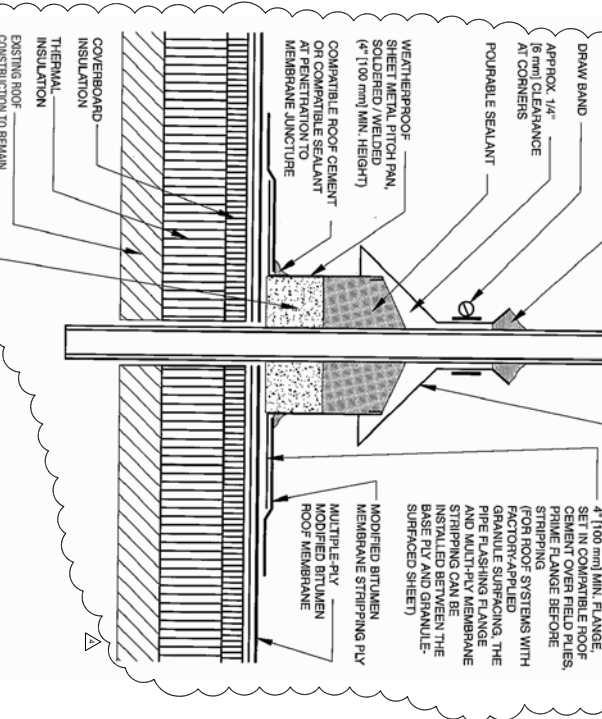
THE FOLLOWING STATEMENTS WILL BE INCLUDED WITH ANY NECESSARY CORRECTIONS TO DEFINE ENVIRONMENTAL ISSUES AND BE INCLUDED HEREIN FOR GENERAL REFERENCE ONLY.

WARNING: ASBESTOS CONTAINING MATERIALS AND LEAD PAINT MAY BE PRESENT IN THE BUILDING. AN ASBESTOS MANAGEMENT PLAN IS AVAILABLE IN THE SCHOOL FOR REVIEW UPON REQUEST AND PERSONALITY ASBESTOS CONTAINING MATERIALS UNLESS THEY ARE BY A LICENSED ASBESTOS ABATEMENT CONTRACTOR IN COMPLIANCE WITH THE DEPARTMENT OF HEALTH SERVICES AND REGULATIONS.

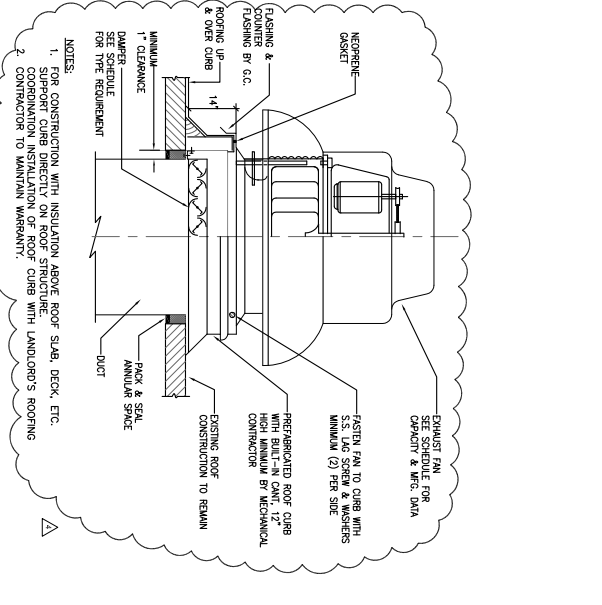
- ROOF PLAN NOTES:**
1. METALLIC GABLE EDGE STOP AND FINISH.
  2. REMOVE AND REPAIR EXISTING EXTERIOR GABLE ROOF AND COUNTER FLASHING PER SECTIONS 0710 AND 0711.
  3. REMOVE AND REPLACE EXISTING ROOF PER SECTIONS 0710 AND 0711.
  4. REMOVE AND REPLACE BASE FLASHING SECTIONS 0710 AND 0711.
  5. REMOVE AND REINSTALL ROOF TOP EQUIPMENT AND PROVIDE NEW EQUIPMENT CURBS PER SECTIONS 0710 AND 0711.
  6. REMOVE AND REINSTALL LIGHTING ASBESTOS SYSTEM ROOF TOP EQUIPMENT PER SECTION 0710.
  7. REMOVE AND REPLACE FLASHING AND GABLE STOPS PER SECTIONS 0710 AND 0711.



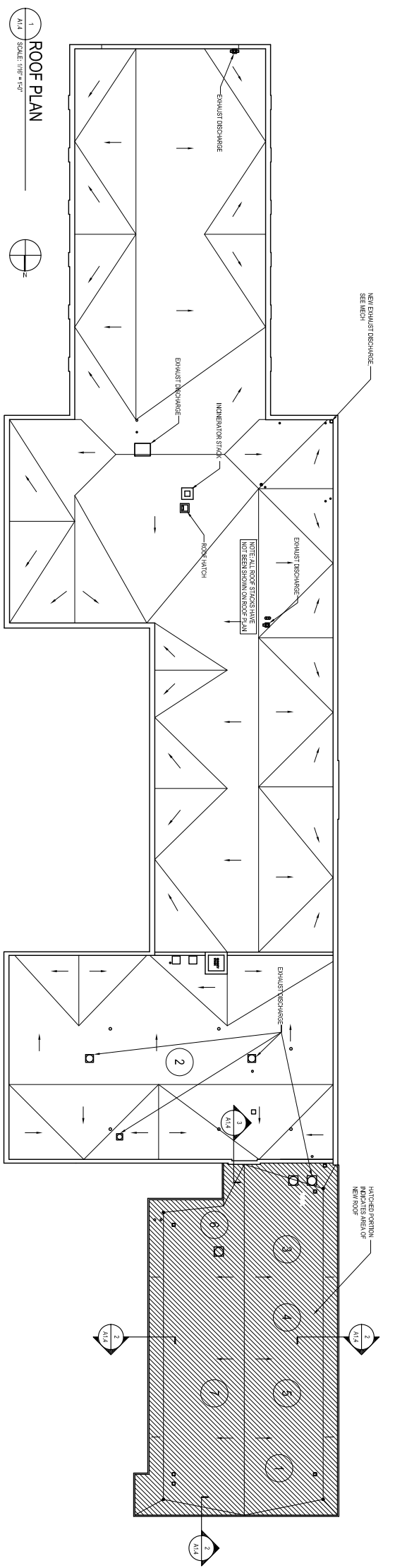
2 DETAIL @ EXST PARAPET  
SCALE: 3/4\"/>



4 TYP. PITCH POCKET DTL. @ MOD. BIT. ROOF  
SCALE: 3/4\"/>



3 DETAIL @ ROOF EXHAUST FAN  
SCALE: 1/2\"/>



1 ROOF PLAN  
SCALE: 1/8\"/>

**SMNG-A**  
SCHOOL RENOVATION  
3000 N. MANAGO AVE CHICAGO, IL 60634  
CHICAGO PUBLIC SCHOOLS  
CITY OF CHICAGO, WATER RESOURCES DEPARTMENT

**UrbanWorks**  
ARCHITECTURE INTERIORS PLANNING  
213 W. Hubbard Street, Suite 710  
Chicago, IL 60610  
P: 312.202.2000  
F: 312.202.2002

**Terra Engineering**  
2201 N. Lincoln Street, Suite 100  
Chicago, IL 60614

**Matrix Engineering Corp**  
331 W. Addison Street, Suite 800  
Chicago, IL 60610

**Dynarept, Inc.**  
2201 N. Lincoln Street, Suite 100  
Chicago, IL 60614

**Henneman Engineering Inc**  
200 S. Wacker Drive, Suite 800  
Chicago, IL 60606

**Edge Associates**  
2201 N. Lincoln Street, Suite 100  
Chicago, IL 60614



**WELLINGTON ELEMENTARY SCHOOL RENOVATION**  
3000 N. MANAGO AVE CHICAGO, IL 60634  
CHICAGO PUBLIC SCHOOLS  
CITY OF CHICAGO, WATER RESOURCES DEPARTMENT

PRC Contract No.: 1513  
PRC Project No.: 05801  
SMNG-A Project No.: 1004 / UWI Project No.: P-1005

Mark	Description	Date
▲	ADDENDUM #4	06.01.10

Reference Sheet **A1.4** Sheet **ASK-2**

**REVISED ROOF PLAN & DETAILS**