

**1 LIFE SAFETY DIAGRAM @ AREA B**  
SCALE 1/16" = 1'-0"

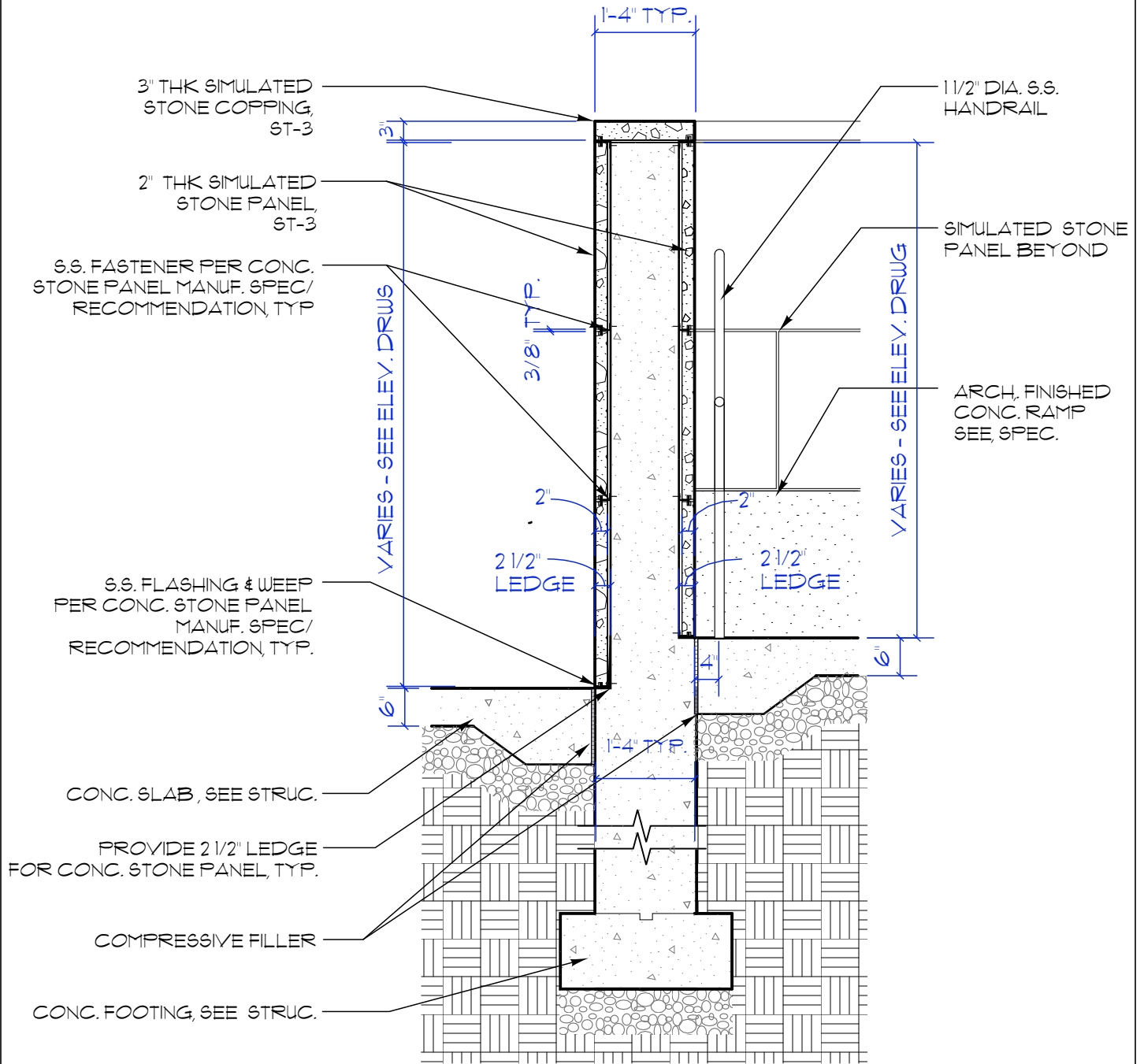


**SOUTHWEST AREA HIGH SCHOOL**  
7651 SOUTH HOMAN  
CHICAGO, IL 60652  
**CHICAGO PUBLIC SCHOOLS**  
CAPITAL PROGRAM NEW CONSTRUCTION  
CITY OF CHICAGO  
MAYOR RICHARD M. DALEY

**STR** | **nia**  
COLLABORATIVE  
**STR PARTNERS LLC**  
350 WEST ONTARIO, SUITE 200  
CHICAGO ILLINOIS 60654  
P. 312.464.1444  
**NIA ARCHITECTS INC**  
1130 SOUTH WABASH, SUITE 200  
CHICAGO ILLINOIS 60605  
P. 312.431.9515

Date: 06/04/2010  
Ref: Sheet G2.0  
PBC Contract No: 05140  
STR Project No: 09014

Sketch Title:  
**LOWER LEVEL LIFE SAFETY DIAGRAM AREA B**  
Sketch No: **AD01-A01**



**9** **WALL SECTION @ RAMP E-02**  
 SCALE 1/2" = 1'-0"



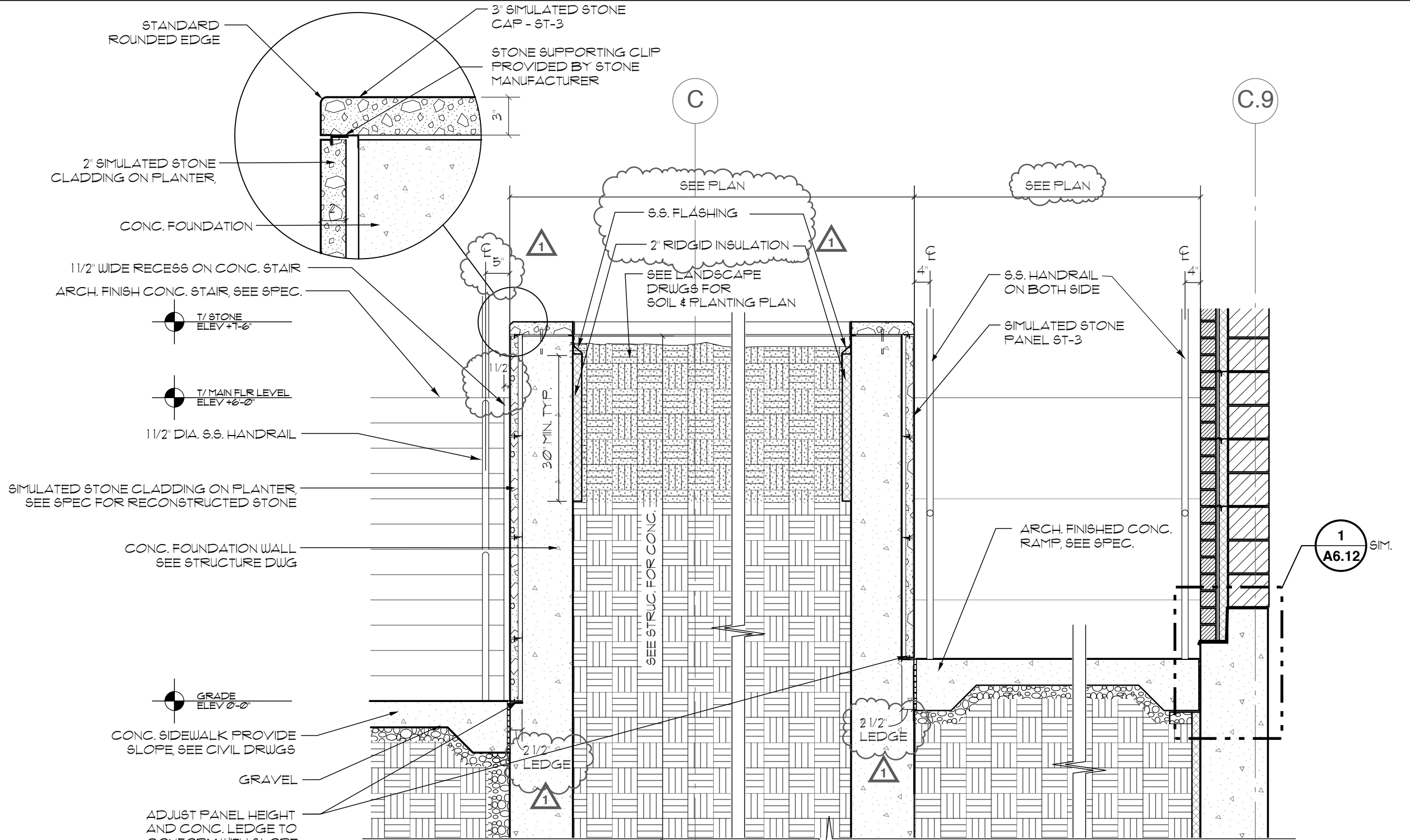
**SOUTHWEST AREA  
 HIGH SCHOOL**  
 7651 SOUTH HOMAN  
 CHICAGO, IL 60652  
**CHICAGO PUBLIC SCHOOLS**  
 CAPITAL PROGRAM NEW  
 CONSTRUCTION  
 CITY OF CHICAGO  
 MAYOR RICHARD M. DALEY

**STR** | **nia**  
 COLLABORATIVE  
**STR PARTNERS LLC**  
 350 WEST ONTARIO, SUITE 200  
 CHICAGO ILLINOIS 60654  
 P. 312.464.1444  
**NIA ARCHITECTS INC**  
 1130 SOUTH WABASH, SUITE 200  
 CHICAGO ILLINOIS 60605  
 P. 312.431.9515

Date: 06/04/2010  
 Ref: Sheet A0.3a  
 PBC Contract No: 05140  
 STR Project No: 09014

Sketch Title:  
**WALL SECTION AT  
 RAMP E-02**

Sketch No: **AD01-  
 A02**



**8 READING GARDEN PLANTER SECTION**  
 SCALE 1/2" = 1'-0"



**SOUTHWEST AREA HIGH SCHOOL**  
 7651 SOUTH HOMAN  
 CHICAGO, IL 60652  
 CHICAGO PUBLIC SCHOOLS  
 CAPITAL PROGRAM NEW CONSTRUCTION  
 CITY OF CHICAGO, MAYOR RICHARD M. DALEY

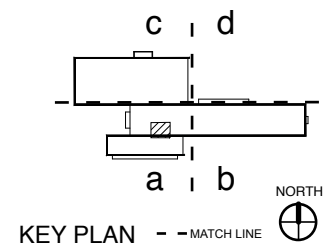
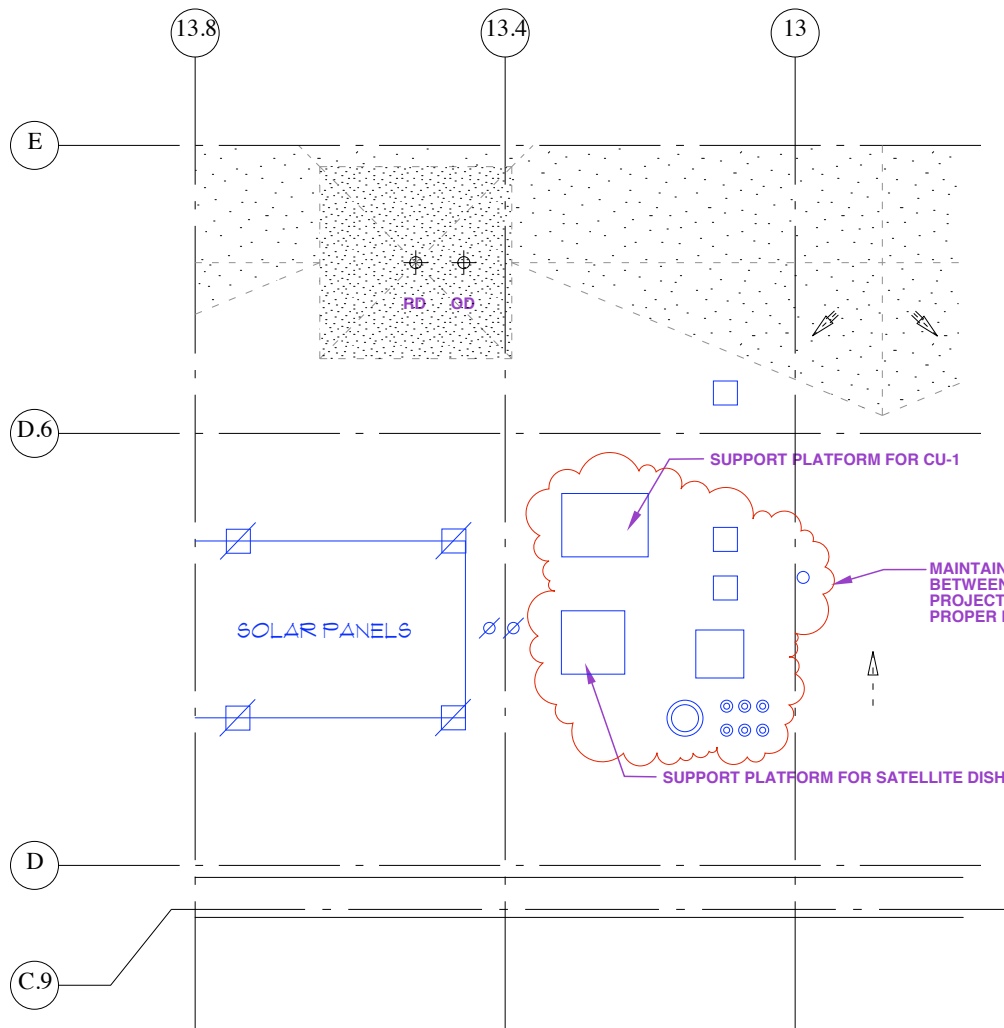


**STR PARTNERS LLC**  
 350 WEST ONTARIO, SUITE 200  
 CHICAGO ILLINOIS 60654  
 P. 312.464.1444  
**NIA ARCHITECTS INC**  
 1130 SOUTH WABASH, SUITE 200  
 CHICAGO ILLINOIS 60605  
 P. 312.431.9515

Date: 06/04/2010  
 Ref: Sheet A0.4  
 PBC Contract No: 05140  
 STR Project No: 09014

Sketch Title:  
**READING GARDEN PLANTER SECTION**

Sketch No:  
**AD01-A03**



**SOUTHWEST AREA  
HIGH SCHOOL**  
7651 SOUTH HOMAN  
CHICAGO, IL 60652  
**CHICAGO PUBLIC SCHOOLS**  
CAPITAL PROGRAM NEW CONSTRUCTION  
CITY OF CHICAGO  
MAYOR RICHARD M. DALEY

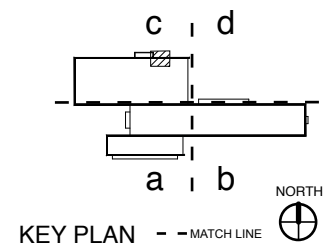
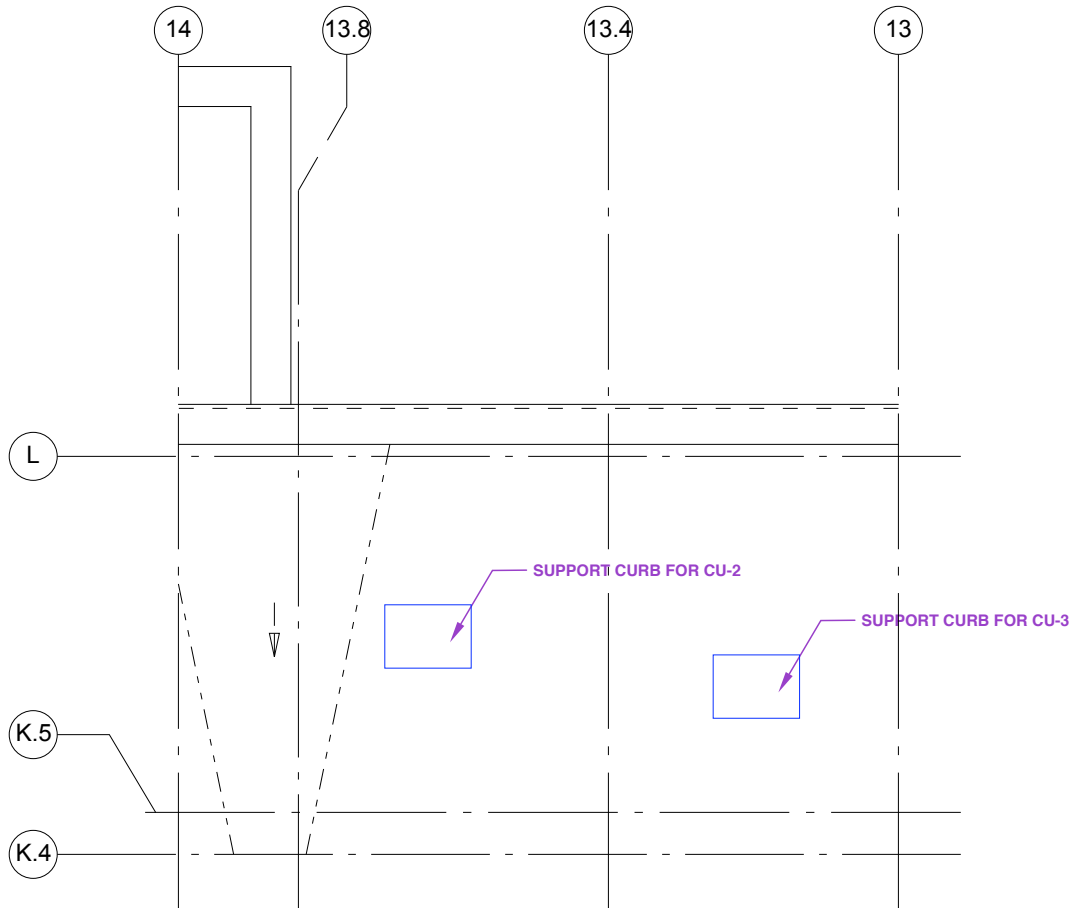
**STR** | **nia**  
COLLABORATIVE  
**STR PARTNERS LLC**  
350 WEST ONTARIO, SUITE 200  
CHICAGO ILLINOIS 60654  
P. 312.464.1444  
**NIA ARCHITECTS INC**  
1130 SOUTH WABASH, SUITE 200  
CHICAGO ILLINOIS 60605  
P. 312.431.9515

Date: 06/04/2010  
Ref: Sheet A1.4a  
PBC Contract No: 05140  
STR Project No: 09014

Sketch Title:  
**PARTIAL  
ROOF PLAN AREA A**

Sketch No:

**AD01-  
A04**



**SOUTHWEST AREA  
HIGH SCHOOL**  
7651 SOUTH HOMAN  
CHICAGO, IL 60652  
**CHICAGO PUBLIC SCHOOLS**  
CAPITAL PROGRAM NEW CONSTRUCTION  
CITY OF CHICAGO  
MAYOR RICHARD M. DALEY

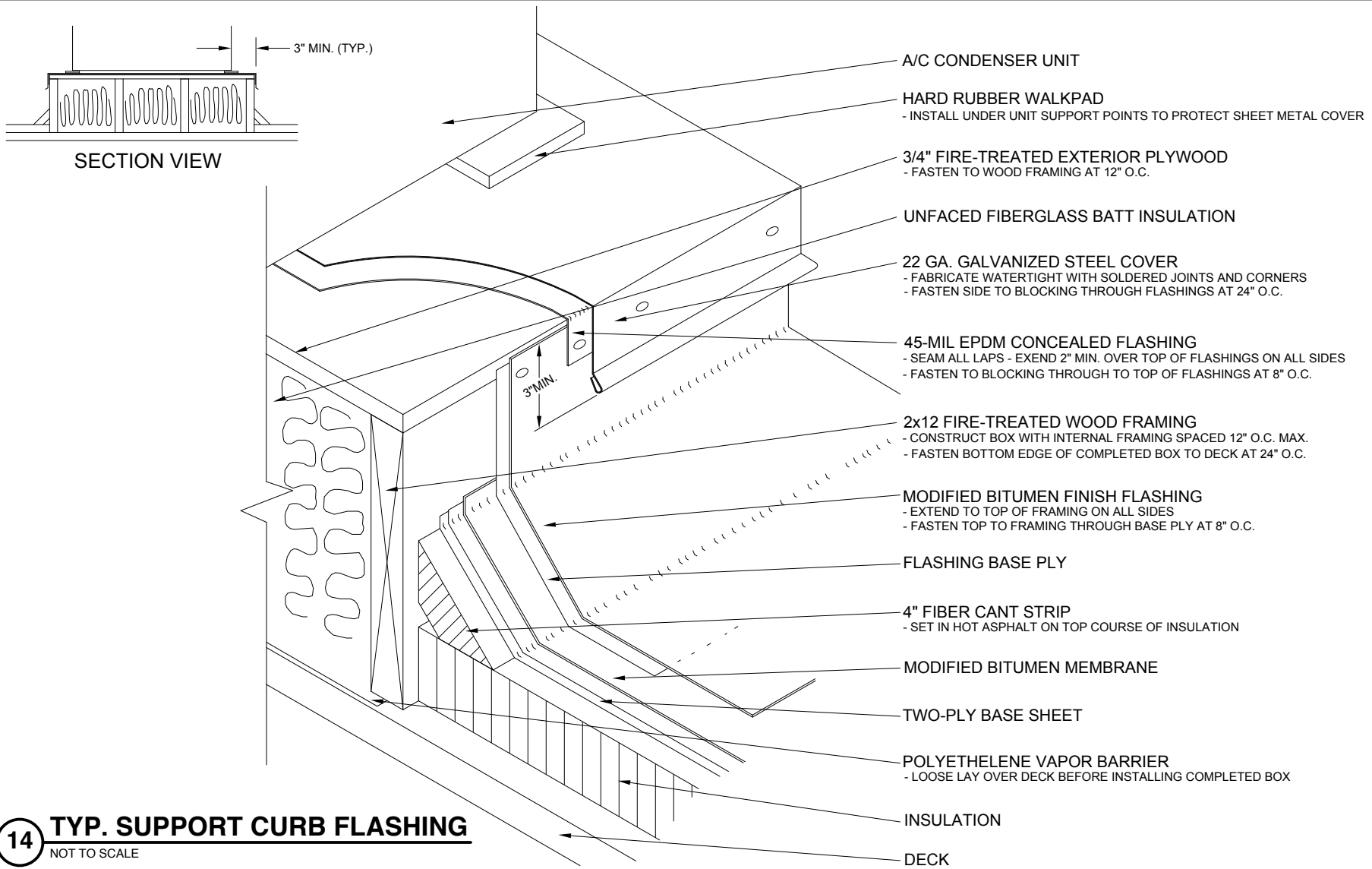
**STR** | **nia**  
COLLABORATIVE  
**STR PARTNERS LLC**  
350 WEST ONTARIO, SUITE 200  
CHICAGO ILLINOIS 60654  
P. 312.464.1444  
**NIA ARCHITECTS INC**  
1130 SOUTH WABASH, SUITE 200  
CHICAGO ILLINOIS 60605  
P. 312.431.9515

Date: 06/04/2010  
Ref: Sheet A1.4c  
PBC Contract No: 05140  
STR Project No: 09014

Sketch Title:  
**PARTIAL  
ROOF PLAN AREA C**

Sketch No:

**AD01-  
A05**



**14 TYP. SUPPORT CURB FLASHING**  
NOT TO SCALE



**SOUTHWEST AREA HIGH SCHOOL**  
7651 SOUTH HOMAN  
CHICAGO, IL 60652

**CHICAGO PUBLIC SCHOOLS**  
CAPITAL PROGRAM NEW CONSTRUCTION  
CITY OF CHICAGO  
MAYOR RICHARD M. DALEY

**STR** | **nia**  
COLLABORATIVE

**STR PARTNERS LLC**  
350 WEST ONTARIO, SUITE 200  
CHICAGO ILLINOIS 60654  
P. 312.464.1444

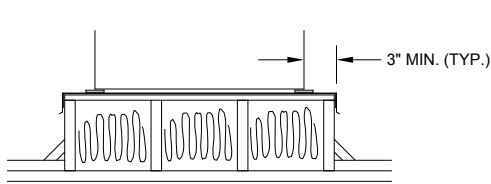
**NIA ARCHITECTS INC**  
1130 SOUTH WABASH, SUITE 200  
CHICAGO ILLINOIS 60605  
P. 312.431.9515

Date: 06/04/2010  
Ref: Sheet A1.8

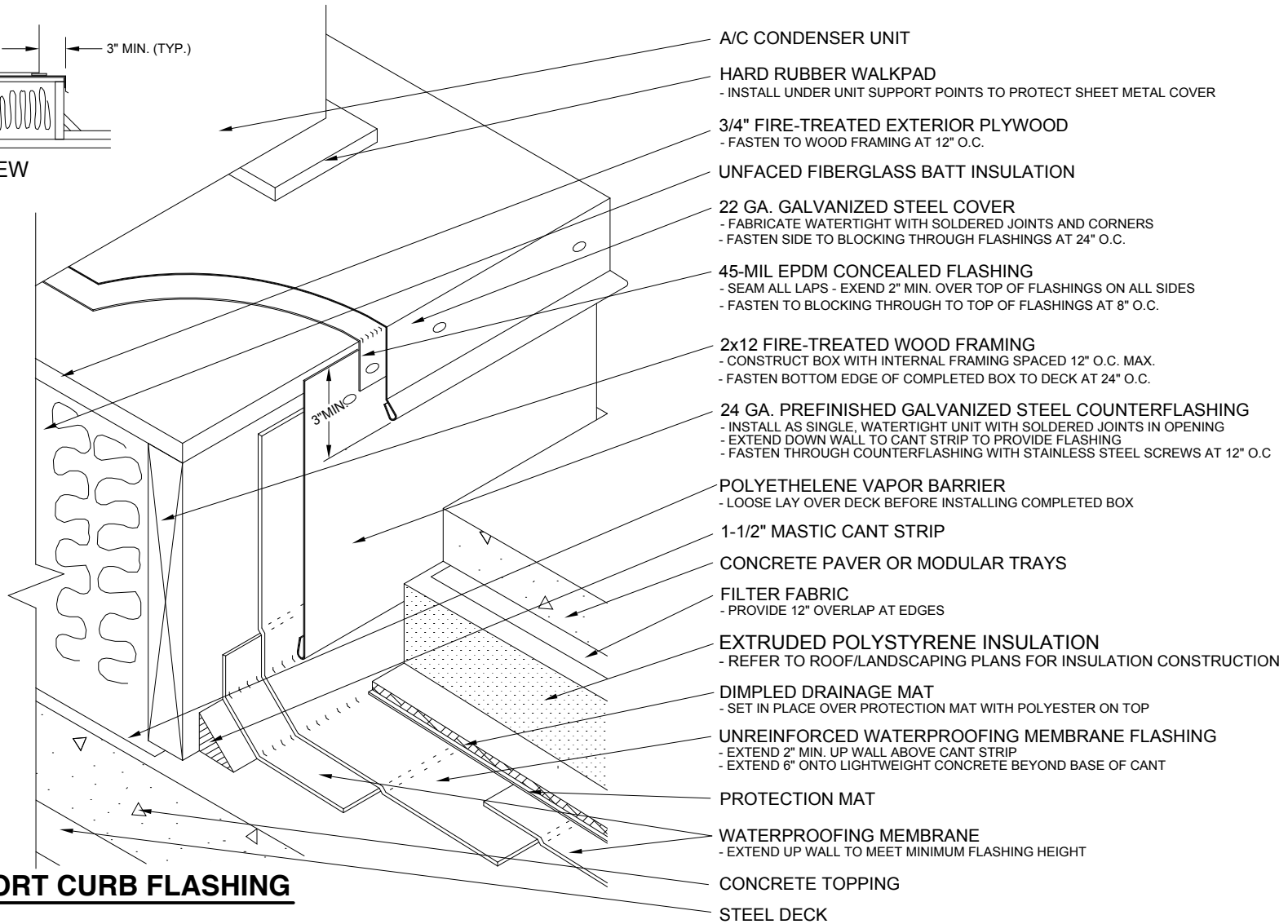
PBC Contract No: 05140  
STR Project No: 09014

Sketch Title:  
**SUPPORT CURB FLASHING DETAIL**

Sketch No:  
**AD01-A06**



SECTION VIEW



- A/C CONDENSER UNIT
- HARD RUBBER WALKPAD  
- INSTALL UNDER UNIT SUPPORT POINTS TO PROTECT SHEET METAL COVER
- 3/4" FIRE-TREATED EXTERIOR PLYWOOD  
- FASTEN TO WOOD FRAMING AT 12" O.C.
- UNFACED FIBERGLASS BATT INSULATION
- 22 GA. GALVANIZED STEEL COVER  
- FABRICATE WATERTIGHT WITH SOLDERED JOINTS AND CORNERS  
- FASTEN SIDE TO BLOCKING THROUGH FLASHINGS AT 24" O.C.
- 45-MIL EPDM CONCEALED FLASHING  
- SEAM ALL LAPS - EXEND 2" MIN. OVER TOP OF FLASHINGS ON ALL SIDES  
- FASTEN TO BLOCKING THROUGH TO TOP OF FLASHINGS AT 8" O.C.
- 2x12 FIRE-TREATED WOOD FRAMING  
- CONSTRUCT BOX WITH INTERNAL FRAMING SPACED 12" O.C. MAX.  
- FASTEN BOTTOM EDGE OF COMPLETED BOX TO DECK AT 24" O.C.
- 24 GA. PREFINISHED GALVANIZED STEEL COUNTERFLASHING  
- INSTALL AS SINGLE, WATERTIGHT UNIT WITH SOLDERED JOINTS IN OPENING  
- EXTEND DOWN WALL TO CANT STRIP TO PROVIDE FLASHING  
- FASTEN THROUGH COUNTERFLASHING WITH STAINLESS STEEL SCREWS AT 12" O.C.
- POLYETHELENE VAPOR BARRIER  
- LOOSE LAY OVER DECK BEFORE INSTALLING COMPLETED BOX
- 1-1/2" MASTIC CANT STRIP
- CONCRETE PAVER OR MODULAR TRAYS
- FILTER FABRIC  
- PROVIDE 12" OVERLAP AT EDGES
- EXTRUDED POLYSTYRENE INSULATION  
- REFER TO ROOF/LANDSCAPING PLANS FOR INSULATION CONSTRUCTION
- DIMPLED DRAINAGE MAT  
- SET IN PLACE OVER PROTECTION MAT WITH POLYESTER ON TOP
- UNREINFORCED WATERPROOFING MEMBRANE FLASHING  
- EXTEND 2" MIN. UP WALL ABOVE CANT STRIP  
- EXTEND 6" ONTO LIGHTWEIGHT CONCRETE BEYOND BASE OF CANT
- PROTECTION MAT
- WATERPROOFING MEMBRANE  
- EXTEND UP WALL TO MEET MINIMUM FLASHING HEIGHT
- CONCRETE TOPPING
- STEEL DECK

**15 TYP. SUPPORT CURB FLASHING**  
NOT TO SCALE



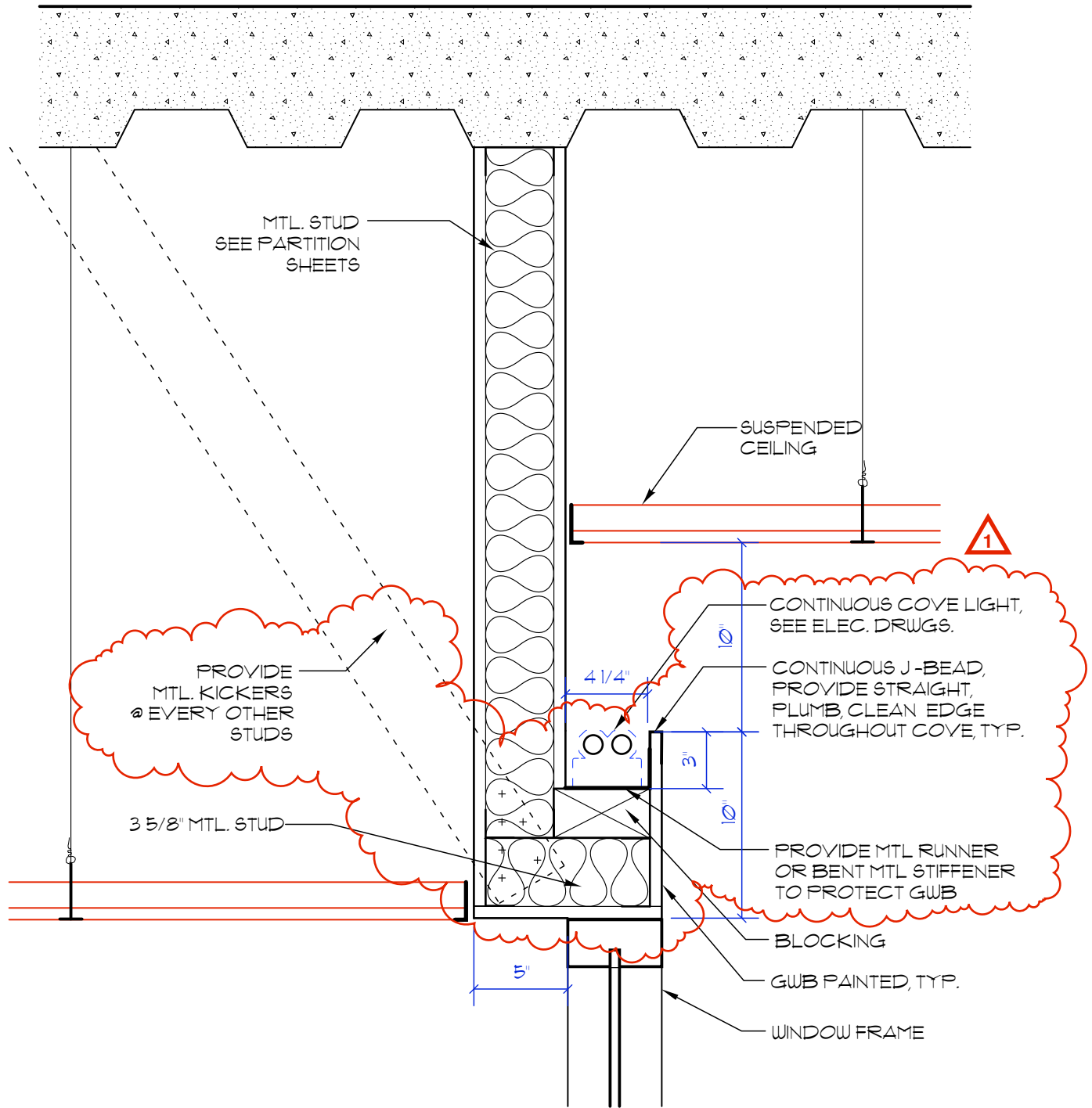
**SOUTHWEST AREA HIGH SCHOOL**  
7651 SOUTH HOMAN  
CHICAGO, IL 60652  
**CHICAGO PUBLIC SCHOOLS**  
CAPITAL PROGRAM NEW CONSTRUCTION  
CITY OF CHICAGO  
MAYOR RICHARD M. DALEY

**STR** | **nia**  
COLLABORATIVE  
**STR PARTNERS LLC**  
350 WEST ONTARIO, SUITE 200  
CHICAGO ILLINOIS 60654  
P. 312.464.1444  
**NIA ARCHITECTS INC**  
1130 SOUTH WABASH, SUITE 200  
CHICAGO ILLINOIS 60605  
P. 312.431.9515

Date: 06/04/2010  
Ref: Sheet A1.8  
PBC Contract No: 05140  
STR Project No: 09014

Sketch Title:  
**SUPPORT CURB FLASHING DETAIL**

Sketch No:  
**AD01-A07**



**5 LIGHT COVE DETAIL**  
SCALE 1 1/2" = 1'-0"



**SOUTHWEST AREA  
HIGH SCHOOL**  
7651 SOUTH HOMAN  
CHICAGO, IL 60652  
**CHICAGO PUBLIC SCHOOLS**  
CAPITAL PROGRAM NEW  
CONSTRUCTION  
CITY OF CHICAGO  
MAYOR RICHARD M. DALEY

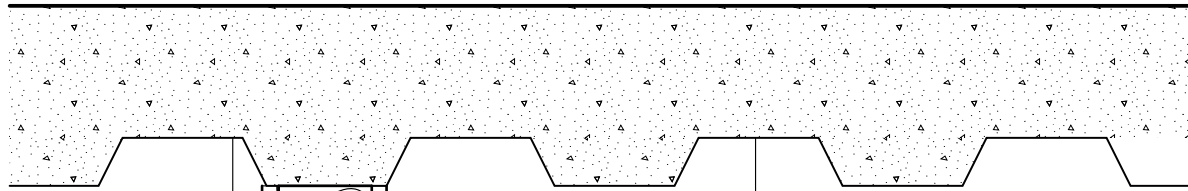
**STR** | **nia**  
COLLABORATIVE  
**STR PARTNERS LLC**  
350 WEST ONTARIO, SUITE 200  
CHICAGO ILLINOIS 60654  
P. 312.464.1444  
**NIA ARCHITECTS INC**  
1130 SOUTH WABASH, SUITE 200  
CHICAGO ILLINOIS 60605  
P. 312.431.9515

Date: 06/04/2010  
Ref: Sheet A2.4  
PBC Contract No: 05140  
STR Project No: 09014

Sketch Title:  
**LIGHT COVE DETAIL**

Sketch No: **AD01-  
A08**





CONTINUOUS COVE LIGHT,  
SEE ELEC. DRUGS.

PROVIDE MTL RUNNER  
OR BENT MTL STIFFENER  
TO PROTECT GWB

CONTINUOUS J-BEAD,  
PROVIDE STRAIGHT,  
PLUMB, CLEAN EDGE  
THROUGHOUT COVE, TYP.

1

PROVIDE MTL RUNNER  
OR BENT MTL STIFFENER  
TO PROTECT GWB

PROVIDE  
MTL KICKERS  
@ EVERY OTHER  
STUDS

6X6 SUSPENDED  
ACOUSTIC  
CEILING TILE  
SYSTEM, EXTEND  
OVER BAMBOO  
CEILING

SIGNAGE

BLOCKING

GWB PAINTED,  
TYP.

ALUMINUM  
ANGLE  
ATTACHED TO  
BAMBOO TRIM

PROVIDE ACOUSTIC  
BATT INSULATION BETWEEN  
BAMBOO CEILING AND GWB  
SOFFIT

SEE RCP FOR STARTING POINT

PRE-FINISHED  
BAMBOO TRIM  
PER  
MANUFACTURER

WALL BEYOND

2X2 VECTOR  
BAMBOO  
CEILING  
TILE SYSTEM,  
SEE SPECS, TYP.

# ENTRY BAMBOO LIGHT COVE DETAIL

8

SCALE 1 1/2" = 1'-0"



**SOUTHWEST AREA  
HIGH SCHOOL**  
7651 SOUTH HOMAN  
CHICAGO, IL 60652  
**CHICAGO PUBLIC SCHOOLS**  
CAPITAL PROGRAM NEW  
CONSTRUCTION  
CITY OF CHICAGO  
MAYOR RICHARD M. DALEY

**STR** | **nia**  
COLLABORATIVE  
STR PARTNERS LLC  
350 WEST ONTARIO, SUITE 200  
CHICAGO ILLINOIS 60654  
P. 312.464.1444  
NIA ARCHITECTS INC  
1130 SOUTH WABASH, SUITE 200  
CHICAGO ILLINOIS 60605  
P. 312.431.9515

Date: 06/04/2010

Ref: Sheet A2.4

PBC Contract No: 05140

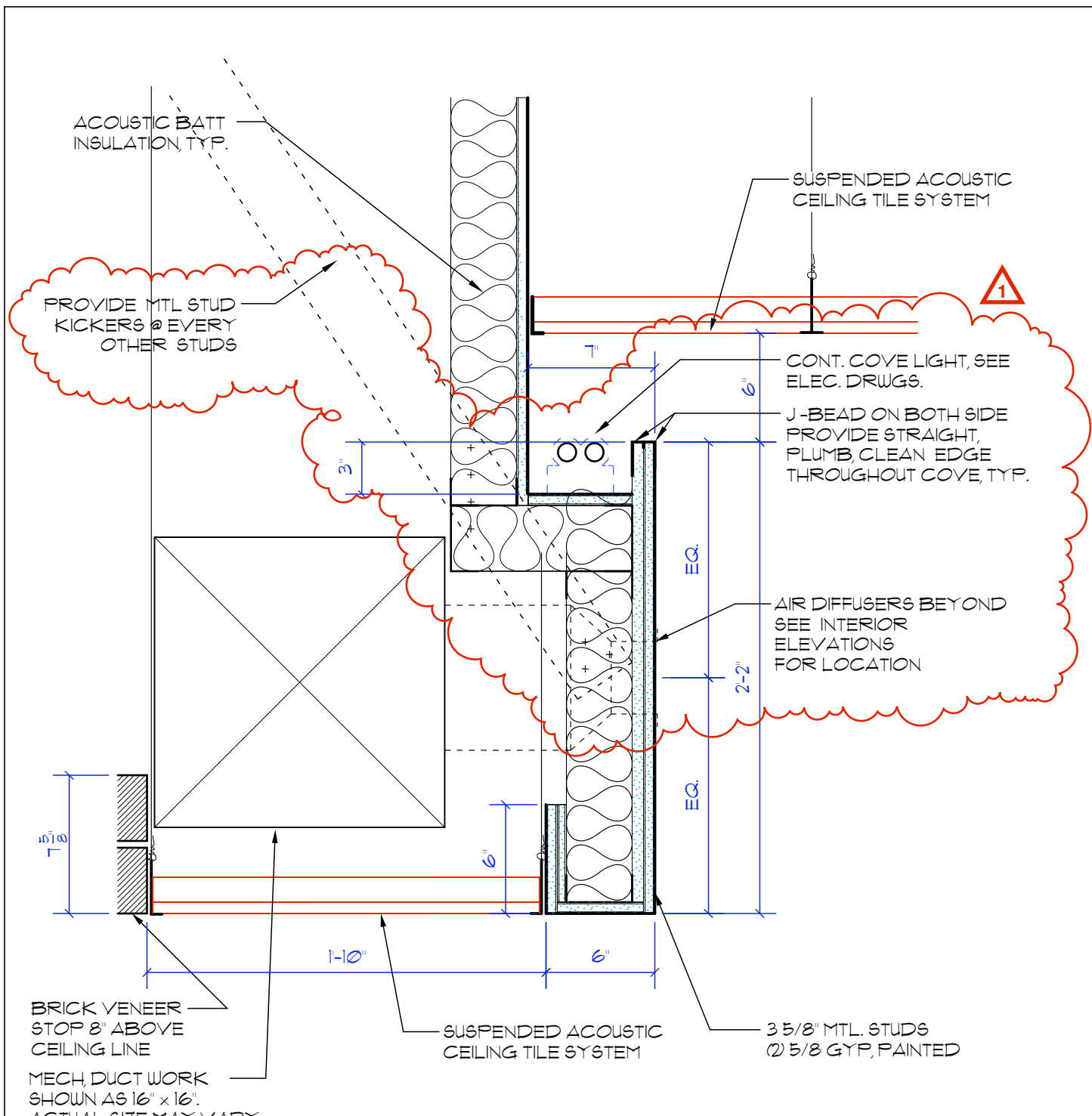
STR Project No: 09014

Sketch Title:

**ENTRY BAMBOO  
LIGHT COVE DETAIL**

Sketch No:

**AD01-  
A09**



**16** **DINING COVE / SOFFIT**  
 SCALE 1 1/2" = 1'-0"

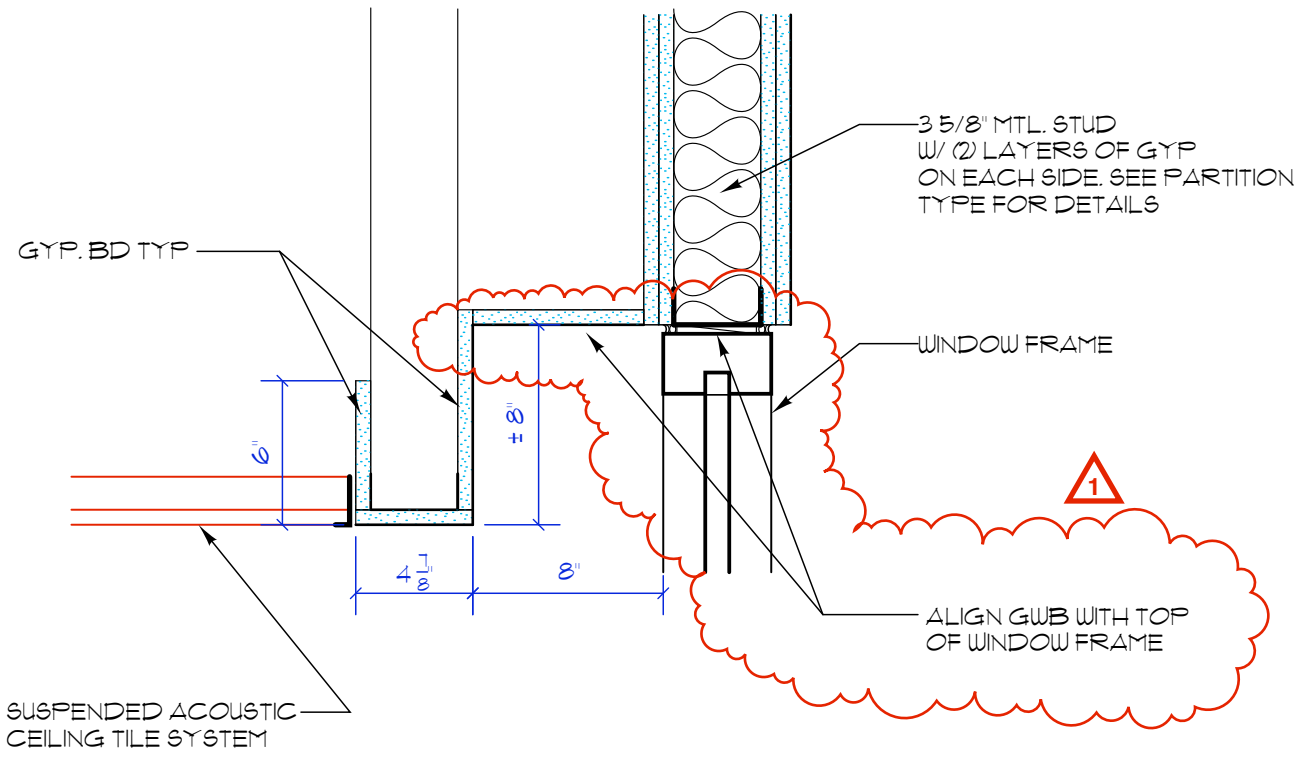


**SOUTHWEST AREA  
 HIGH SCHOOL**  
 7651 SOUTH HOMAN  
 CHICAGO, IL 60652  
**CHICAGO PUBLIC SCHOOLS**  
 CAPITAL PROGRAM NEW  
 CONSTRUCTION  
 CITY OF CHICAGO  
 MAYOR RICHARD M. DALEY

**STR** | **nia**  
 COLLABORATIVE  
**STR PARTNERS LLC**  
 350 WEST ONTARIO, SUITE 200  
 CHICAGO ILLINOIS 60654  
 P. 312.464.1444  
**NIA ARCHITECTS INC**  
 1130 SOUTH WABASH, SUITE 200  
 CHICAGO ILLINOIS 60605  
 P. 312.431.9515

Date: 06/04/2010  
 Ref: Sheet A2.4  
 PBC Contract No: 05140  
 STR Project No: 09014

Sketch Title:  
**DINING COVE/SOFFIT**  
 Sketch No:  
**AD01-  
 A10**



## 2 COMPUTER LAB SOFFIT DETAIL

SCALE 1 1/2" = 1'-0"

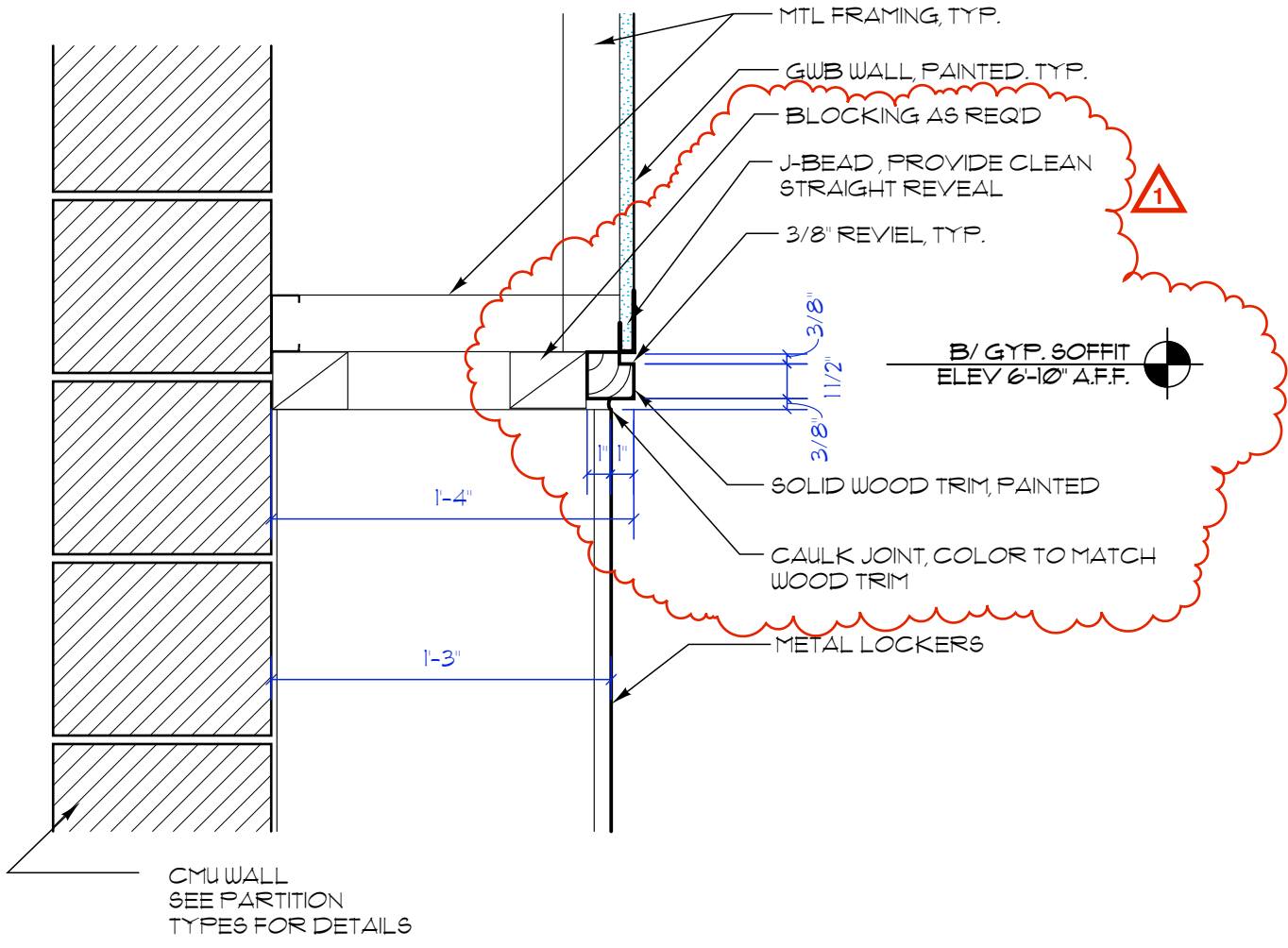


**SOUTHWEST AREA  
HIGH SCHOOL**  
7651 SOUTH HOMAN  
CHICAGO, IL 60652  
**CHICAGO PUBLIC SCHOOLS**  
CAPITAL PROGRAM NEW  
CONSTRUCTION  
CITY OF CHICAGO  
MAYOR RICHARD M. DALEY

**STR** | **nia**  
COLLABORATIVE  
**STR PARTNERS LLC**  
350 WEST ONTARIO, SUITE 200  
CHICAGO ILLINOIS 60654  
P. 312.464.1444  
**NIA ARCHITECTS INC**  
1130 SOUTH WABASH, SUITE 200  
CHICAGO ILLINOIS 60605  
P. 312.431.9515

Date: 06/04/2010  
Ref: Sheet A2.4  
PBC Contract No: 05140  
STR Project No: 09014

Sketch Title:  
**COMPUTER LAB  
SOFFIT DETAIL**  
Sketch No: **AD01-  
A11**



**4 LOCKER SOFFIT DETAIL**  
 SCALE 1 1/2" = 1'-0"

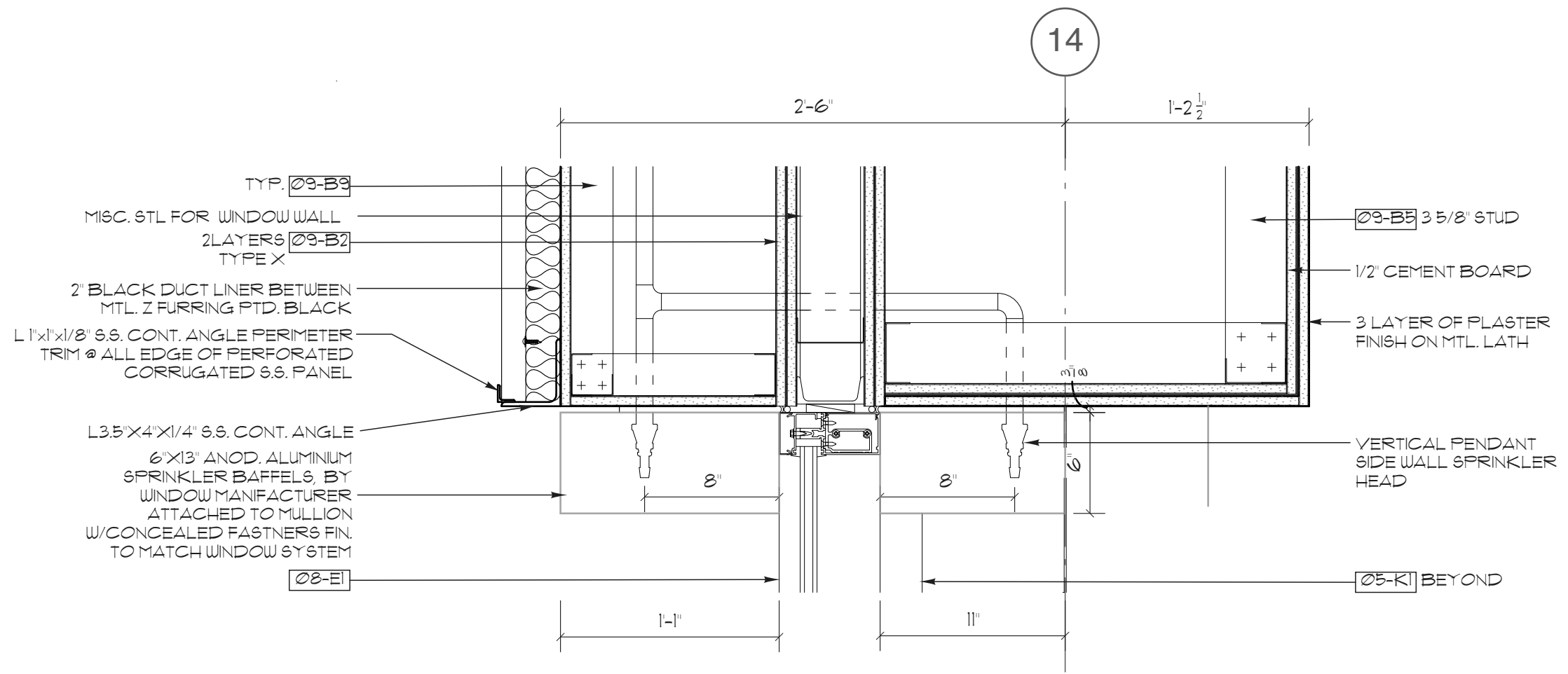


**SOUTHWEST AREA HIGH SCHOOL**  
 7651 SOUTH HOMAN  
 CHICAGO, IL 60652  
**CHICAGO PUBLIC SCHOOLS**  
 CAPITAL PROGRAM NEW CONSTRUCTION  
 CITY OF CHICAGO  
 MAYOR RICHARD M. DALEY

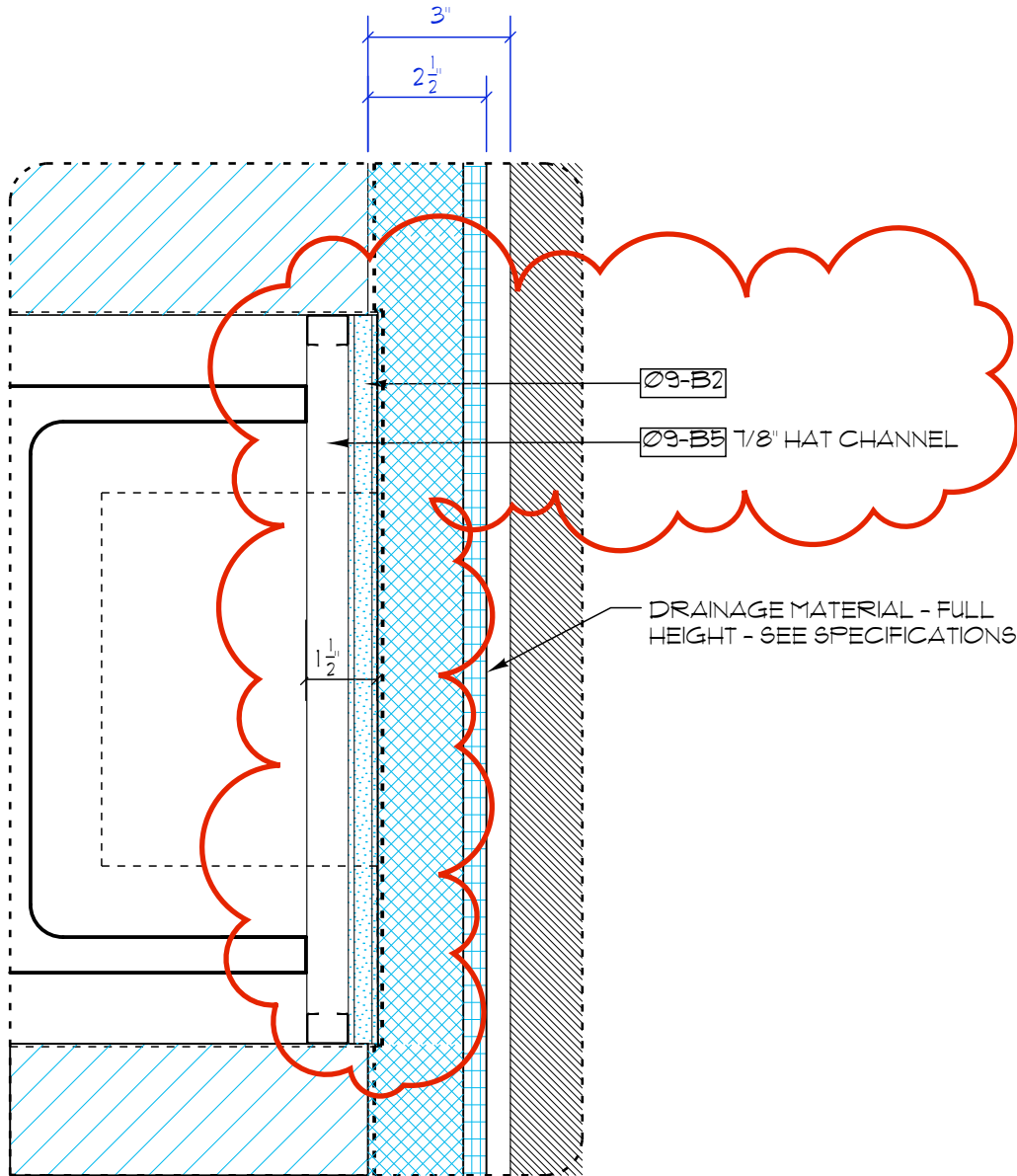
**STR** | **nia**  
 COLLABORATIVE  
**STR PARTNERS LLC**  
 350 WEST ONTARIO, SUITE 200  
 CHICAGO ILLINOIS 60654  
 P. 312.464.1444  
**NIA ARCHITECTS INC**  
 1130 SOUTH WABASH, SUITE 200  
 CHICAGO ILLINOIS 60605  
 P. 312.431.9515

Date: 06/04/2010  
 Ref: Sheet A2.4  
 PBC Contract No: 05140  
 STR Project No: 09014

Sketch Title:  
**LOCKER SOFFIT DETAIL**  
 Sketch No:  
**AD01-A12**



**6 SOFFIT DETAIL**  
 SCALE 1 1/2" = 1'-0"



**B**

**8 PLAN DETAIL**  
SCALE 3" = 1'-0"



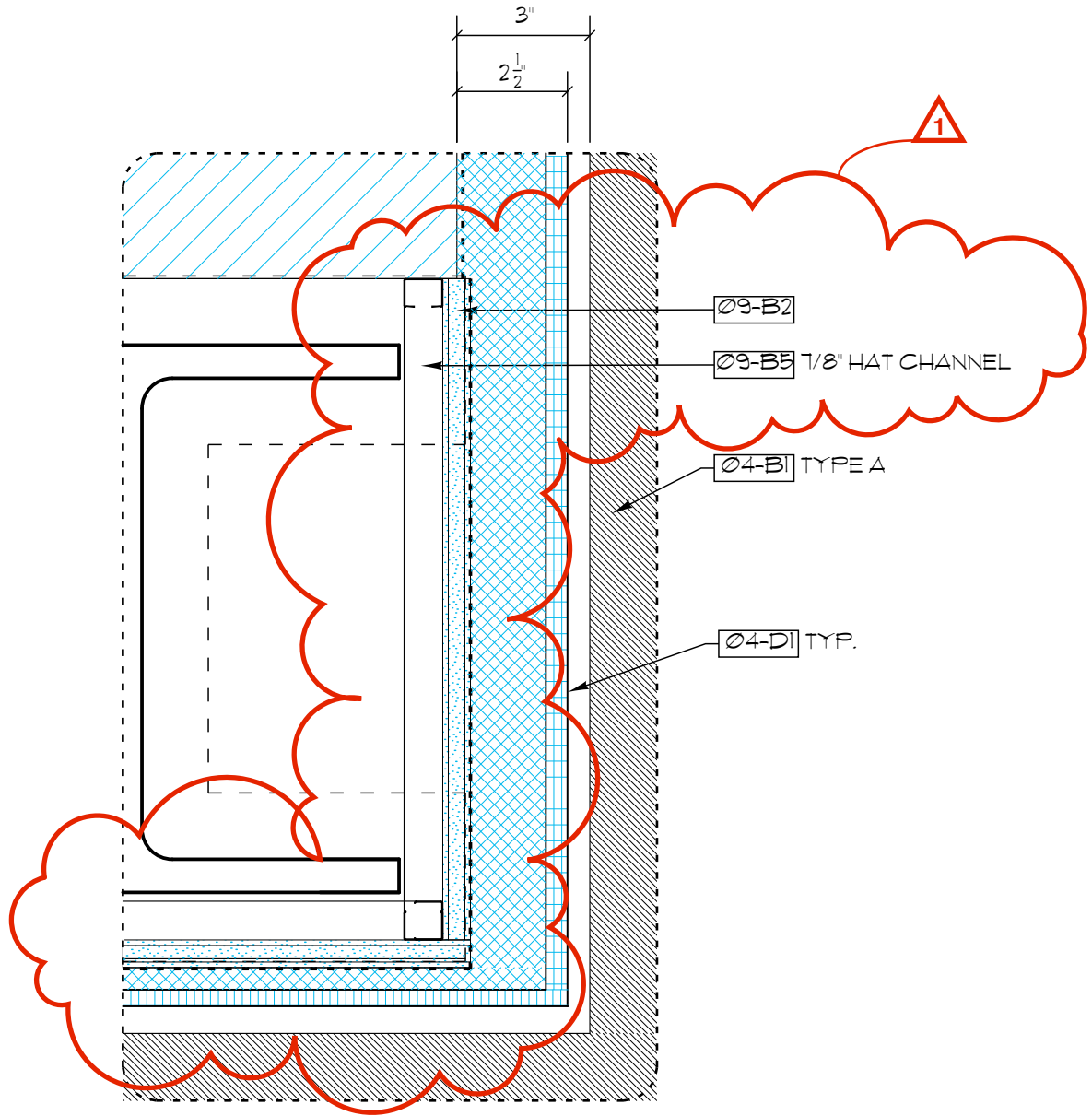
**SOUTHWEST AREA HIGH SCHOOL**  
7651 SOUTH HOMAN  
CHICAGO, IL 60652  
**CHICAGO PUBLIC SCHOOLS**  
CAPITAL PROGRAM NEW CONSTRUCTION  
CITY OF CHICAGO  
MAYOR RICHARD M. DALEY

**STR** | **nia**  
COLLABORATIVE  
**STR PARTNERS LLC**  
350 WEST ONTARIO, SUITE 200  
CHICAGO ILLINOIS 60654  
P. 312.464.1444  
**NIA ARCHITECTS INC**  
1130 SOUTH WABASH, SUITE 200  
CHICAGO ILLINOIS 60605  
P. 312.431.9515

Date: 06/04/2010  
Ref: Sheet A6.9a  
PBC Contract No: 05140  
STR Project No: 09014

Sketch Title:  
**PLAN DETAIL**

Sketch No: **AD01-A14**



**B**

**9 PLAN DETAIL**  
SCALE 3" = 1'-0"



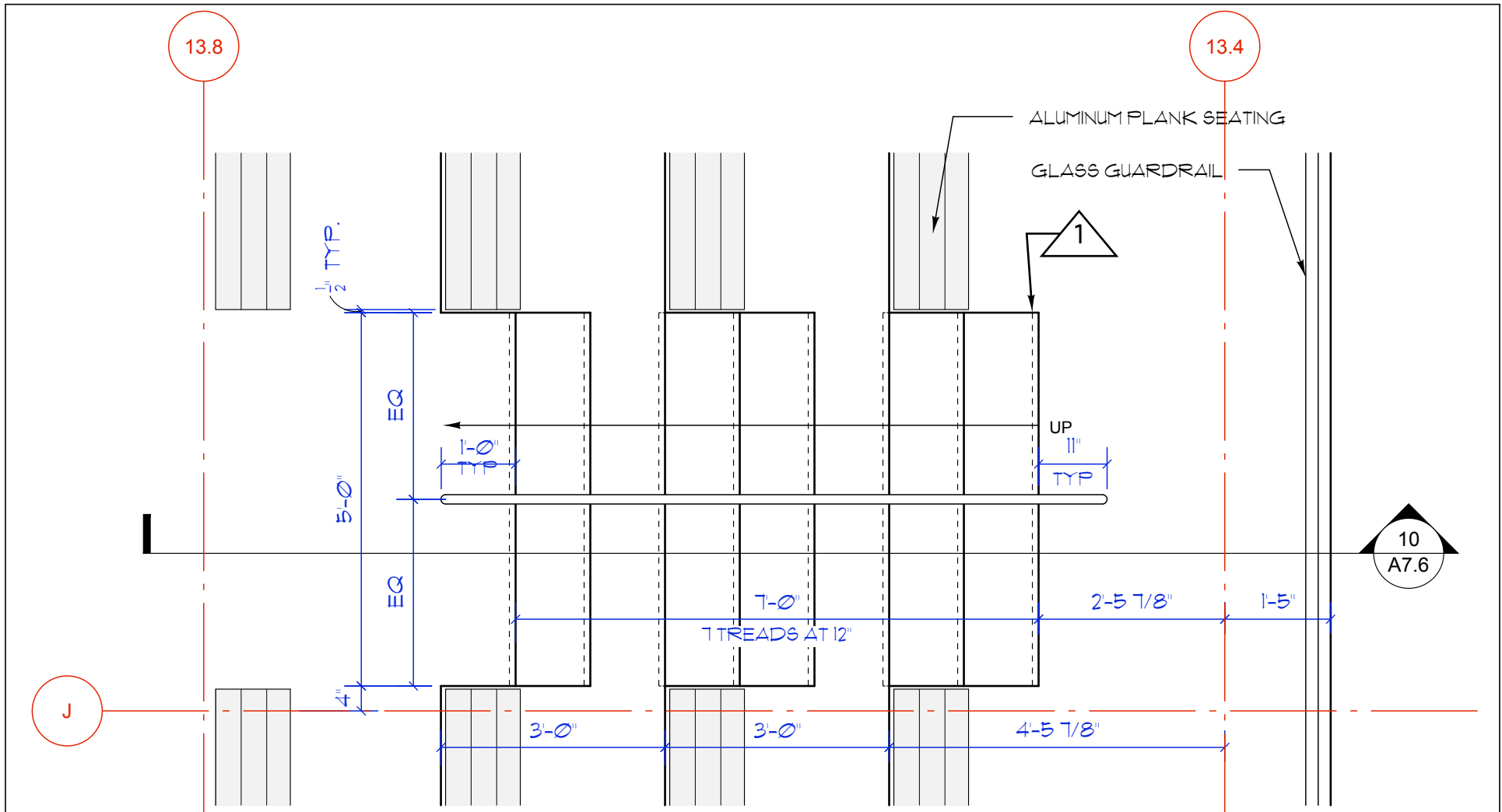
**SOUTHWEST AREA HIGH SCHOOL**  
7651 SOUTH HOMAN  
CHICAGO, IL 60652  
**CHICAGO PUBLIC SCHOOLS**  
CAPITAL PROGRAM NEW  
CONSTRUCTION  
CITY OF CHICAGO  
MAYOR RICHARD M. DALEY

**STR** | **nia**  
COLLABORATIVE  
**STR PARTNERS LLC**  
350 WEST ONTARIO, SUITE 200  
CHICAGO ILLINOIS 60654  
P. 312.464.1444  
**NIA ARCHITECTS INC**  
1130 SOUTH WABASH, SUITE 200  
CHICAGO ILLINOIS 60605  
P. 312.431.9515

Date: 06/04/2010  
Ref: Sheet A6.9a  
PBC Contract No: 05140  
STR Project No: 09014

Sketch Title:  
**PLAN DETAIL**

Sketch No: **AD01-A15**



**9 STAIR @ POOL OBSERVATION C-111 - MAIN LEVEL PLAN**

SCALE 1/2" = 1'-0"



**SOUTHWEST AREA HIGH SCHOOL**  
 7651 SOUTH HOMAN  
 CHICAGO, IL 60652  
**CHICAGO PUBLIC SCHOOLS**  
 CAPITAL PROGRAM NEW CONSTRUCTION  
 CITY OF CHICAGO  
 MAYOR RICHARD M. DALEY

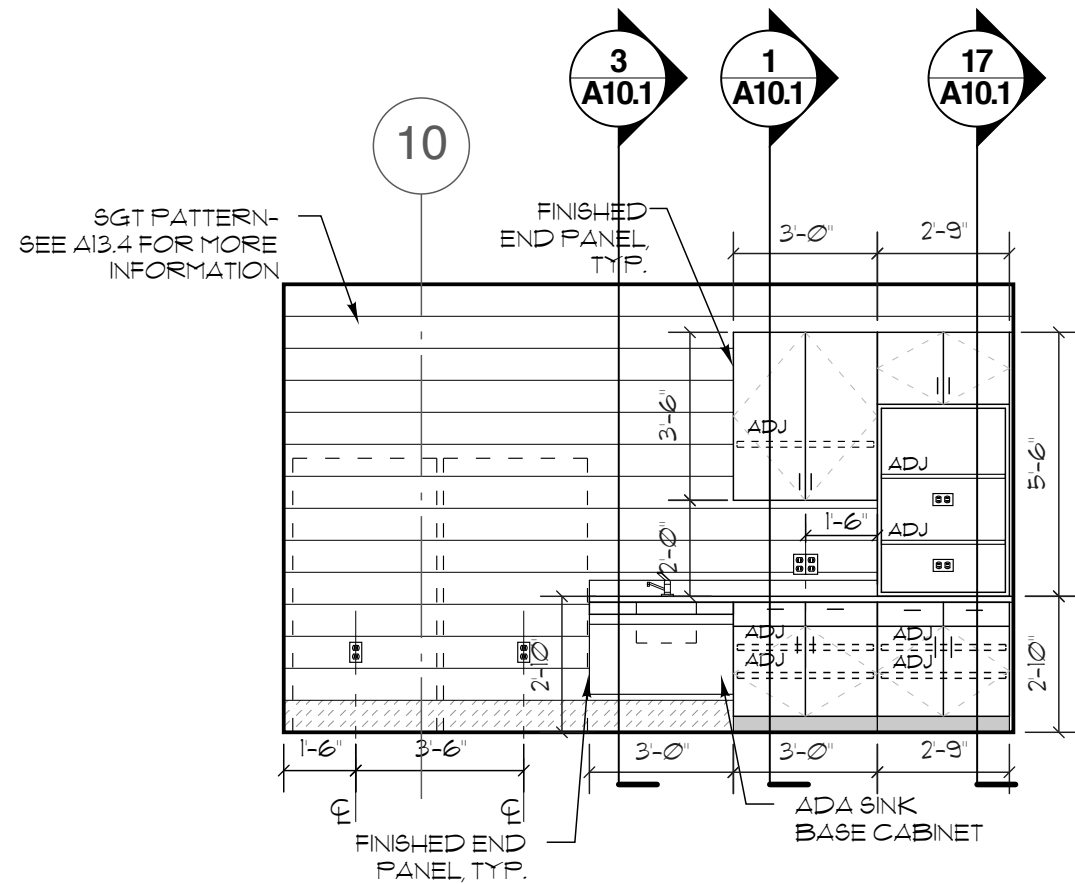
**STR nia**  
 COLLABORATIVE  
**STR PARTNERS LLC**  
 350 WEST ONTARIO, SUITE 200  
 CHICAGO ILLINOIS 60654  
 P. 312.464.1444  
**NIA ARCHITECTS INC**  
 1130 SOUTH WABASH, SUITE 200  
 CHICAGO ILLINOIS 60605  
 P. 312.431.9515

Date: 06/04/2010  
 Ref: Sheet A7.6  
 PBC Contract No: 05140  
 STR Project No: 09014

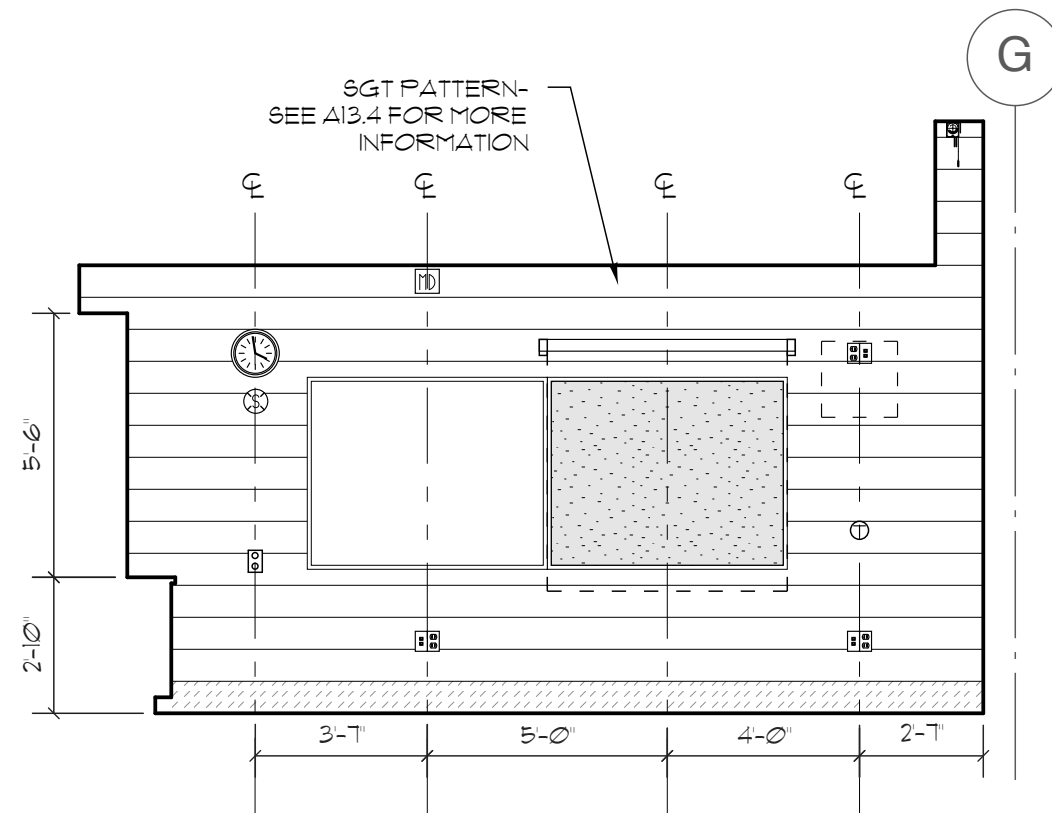
Sketch Title:  
**STAIR @ POOL OBSERVATION**

Sketch No:  
**AD01-A16**

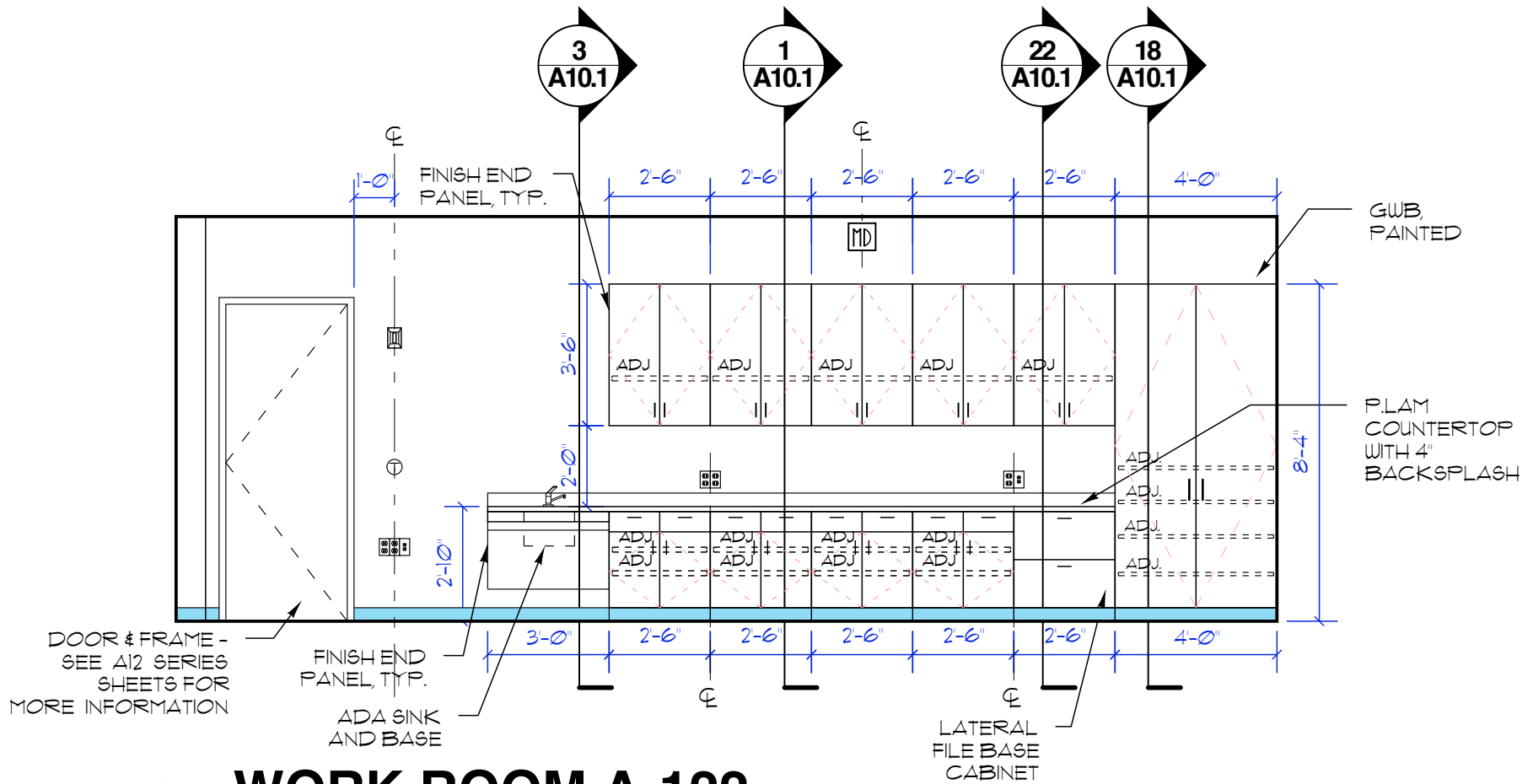




**11** **FACULTY DINING-B106**  
SCALE 1/4" = 1'-0"



**10** **FACULTY DINING-B106**  
SCALE 1/4" = 1'-0"



# WORK ROOM A-122

6

SCALE 1/4" = 1'-0"



**SOUTHWEST AREA HIGH SCHOOL**  
 7651 SOUTH HOMAN  
 CHICAGO, IL 60652  
**CHICAGO PUBLIC SCHOOLS**  
 CAPITAL PROGRAM NEW CONSTRUCTION  
 CITY OF CHICAGO  
 MAYOR RICHARD M. DALEY



Date: 06/04/2010  
 Ref: Sheet A8.18b  
 PBC Contract No: 05140  
 STR Project No: 09014

Sketch Title:  
**WORK ROOM ELEVATION**

Sketch No:

**AD01-A18**

**LOWER LEVEL: CIRCULATION**

Qty	Location	Sign Type	See Sheet	Mounting Type	O.C. Height A.F.F.
1	Elev A	Elevator Set	1/G1.2	Wall	60"
1	Elev B	Elevator Set	1/G1.2	Wall	60"
2	Stair A	Stair Sign	A15.2	Wall	60"
1	Stair A	ARA Sign with Instructions for Use	A15.2	Wall	60"
1	Stair D	Stair Sign	A15.2	Wall	60"
1	Stair D	ARA Sign with Instructions for Use	A15.2	Wall	60"
1	Stair E	Stair Sign	A15.2	Wall	60"
1	Stair E	ARA Sign with Instructions for Use	A15.2	Wall	60"
3	Stair F	Stair Sign	A15.2	Wall	60"
2	Stair F	ARA Sign with Instructions for Use	A15.2	Wall	60"
2	Stair G	Stair Sign	A15.2	Wall	60"
1	Stair G	ARA Sign with Instructions for Use	A15.2	Wall	60"
1	Stair H	ARA Sign with Instructions for Use	A15.2	Wall	60"
1	Stair L	Stair Sign	A15.2	Wall	60"
1	Stair L	ARA Sign with Instructions for Use	A15.2	Wall	60"
1	Corridor C-009	Unisex Toilet Directional Sign	A15.2	Wall	60"
1	Corridor A-001	Unisex Toilet Directional Sign	A15.2	Wall	60"
1	Natatorium C-030	Unisex Toilet Directional Sign	A15.2	Wall	60"
1	Gymnasium C-002	Accessible Stage Access	A15.2	Wall	60"
2	Gymnasium C-002	Map of Aisle Seats, ADA seats*	-	Wall	60"
1	TBD	Assistance Sign Type TDD	A15.2	Wall	60"
1	TBD	Assistance Sign Type HL	A15.2	Wall	60"

**MAIN LEVEL: CIRCULATION**

Qty	Location	Sign Type	See Sheet	Mounting Type	O.C. Height A.F.F.
1	Elev A	Elevator Set	A15.2	Wall	60"
1	Elev B	Elevator Set	A15.2	Wall	60"
1	Stair B	Stair Sign	A15.2	Wall	60"
1	Stair B	Exit Sign	A15.2	Wall	60"
1	Stair C	Stair Sign	A15.2	Wall	60"
2	Stair C	ARA Sign with Instructions for Use	A15.2	Wall	60"
2	Stair D	Stair Sign	A15.2	Wall	60"
2	Stair D	Exit Sign	A15.2	Wall	60"
2	Stair E	Stair Sign	A15.2	Wall	60"
1	Stair E	Exit Sign	A15.2	Wall	60"
2	Stair K	Stair Sign	A15.2	Wall	60"
2	Stair K	ARA Sign with Instructions for Use	A15.2	Wall	60"
1	Stair L	Stair Sign	A15.2	Wall	60"
1	Natatorium C-030	Map of Aisle Seats, ADA seats*	-	Wall	60"
2	Gymnasium C-002	Map of Aisle Seats, ADA seats*	-	Wall	60"
1	Library A120	Unisex Toilet Directional Sign	A15.2	Wall	60"
1	TBD	Assistance Sign Type TDD	A15.2	Wall	60"
1	TBD	Assistance Sign Type HL	A15.2	Wall	60"

\* Provide 12" x 12" acrylic map of room indicating locations of ADA seating, companion seating, and aisle seats with removable armrests. Where applicable, locate map adjacent to the assisted listening sign.



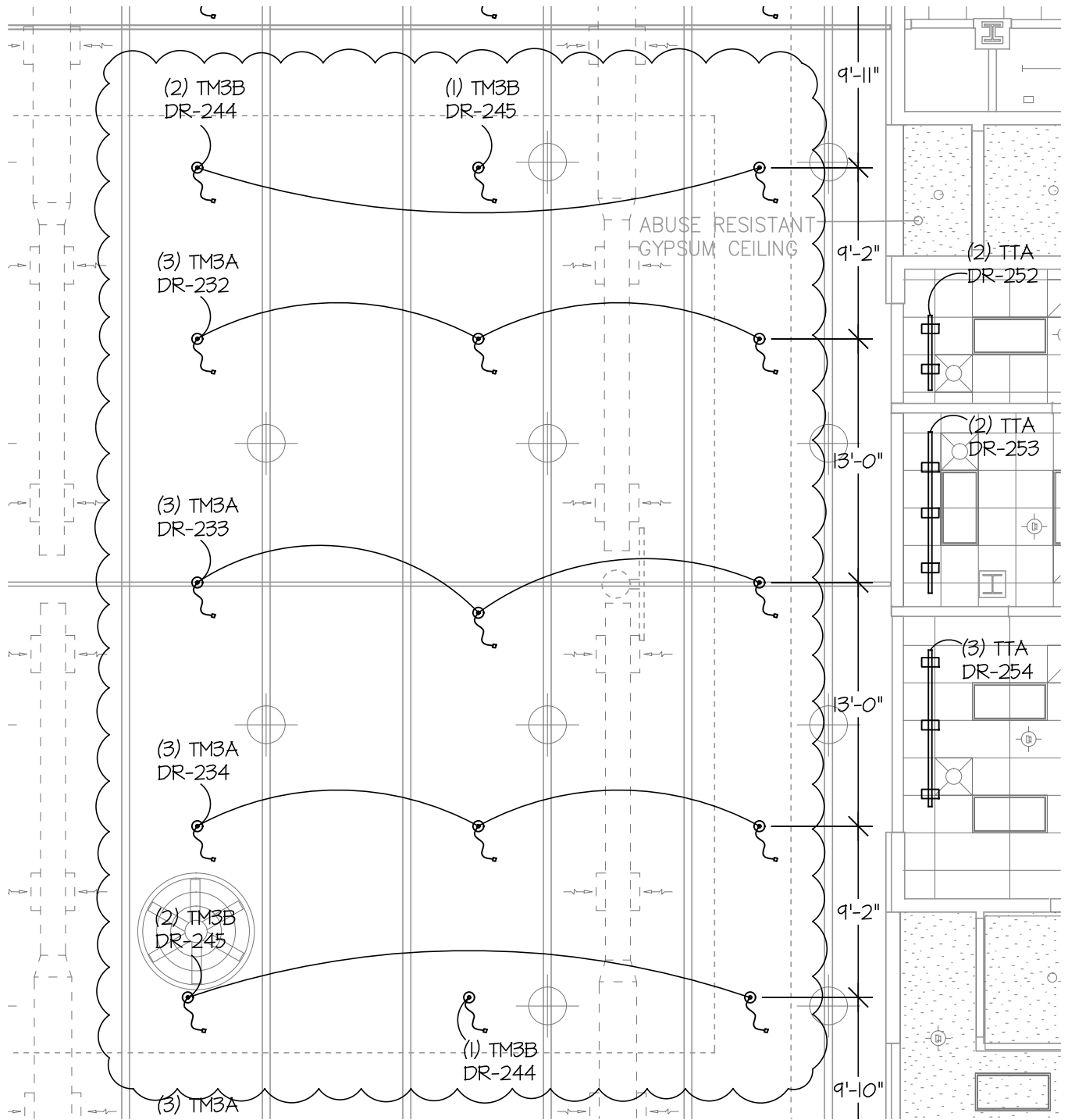
**SOUTHWEST AREA  
HIGH SCHOOL**  
7651 SOUTH HUMAN  
CHICAGO, IL 60652  
**CHICAGO PUBLIC SCHOOLS**  
CAPITAL PROGRAM NEW  
CONSTRUCTION  
CITY OF CHICAGO  
MAYOR RICHARD M. DALEY



Date: 06/04/2010  
Ref: Sheet A15.2  
PBC Contract No: 05140  
STR Project No: 09014

Sketch Title:  
**PARTIAL SIGNAGE  
SCHEDULE**

Sketch No: **AD01-  
A19**



**E5** THEATRE LIGHTING - CEILING REVISIONS  
 AD01-TH01 SCALE: 1/8" = 1' - 0"



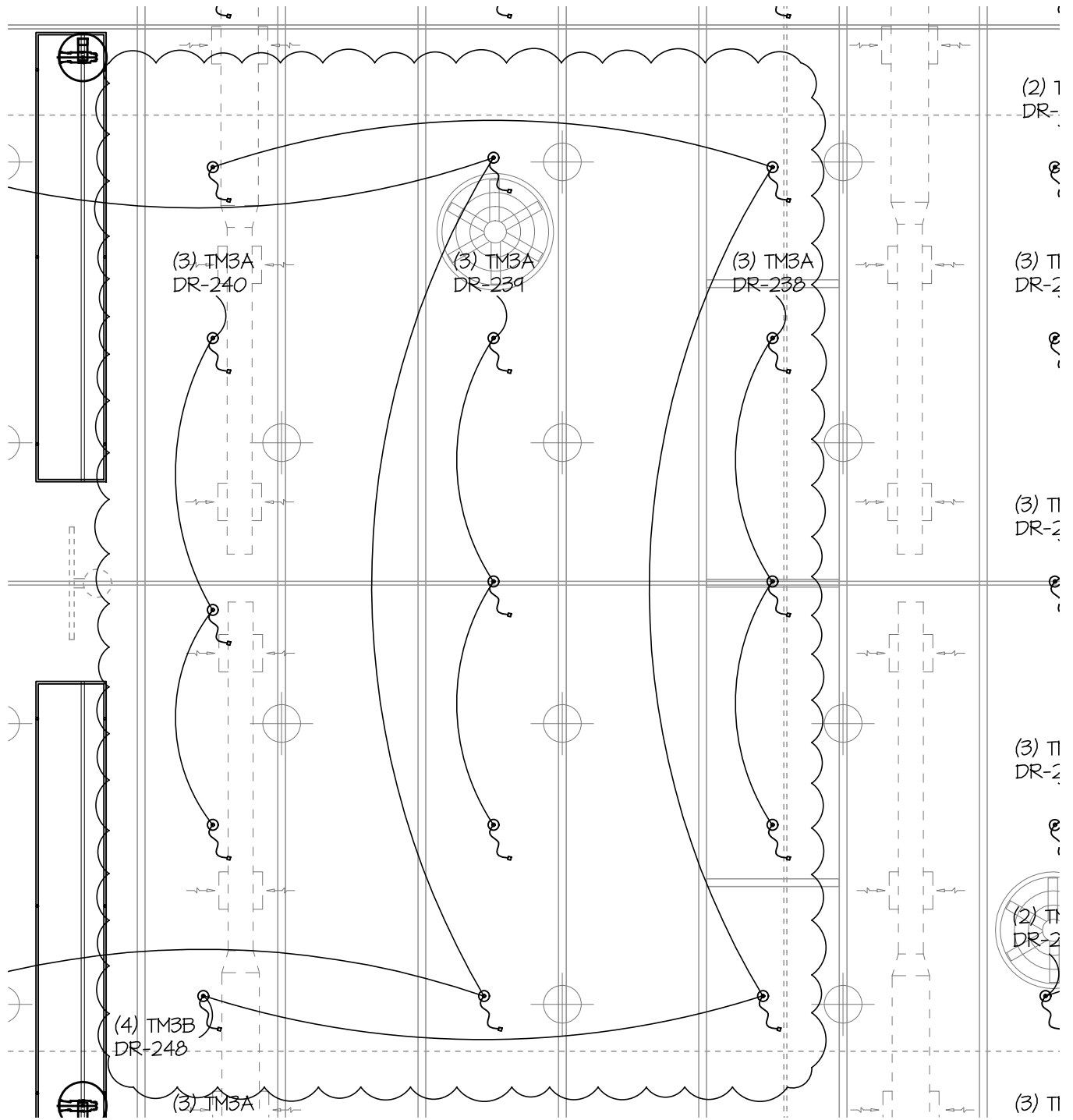
**SOUTHWEST AREA  
 HIGH SCHOOL**  
 7651 SOUTH HUMAN  
 CHICAGO, IL 60652  
**CHICAGO PUBLIC SCHOOLS**  
 CAPITAL PROGRAM NEW  
 CONSTRUCTION  
 CITY OF CHICAGO  
 MAYOR RICHARD M. DALEY



Date: 06/04/2010  
 Ref: Sheet E5/TH1.03  
 PBC Contract No: 05140  
 STR Project No: 09014

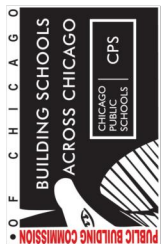
Sketch Title:  
**THEATRE LIGHTING  
 CEILING REVISIONS**

Sketch No:  
**AD01-  
 TH01**



**E5** THEATRE LIGHTING - CEILING REVISIONS  
 AD01-TH02

SCALE: 1/8" = 1' - 0"



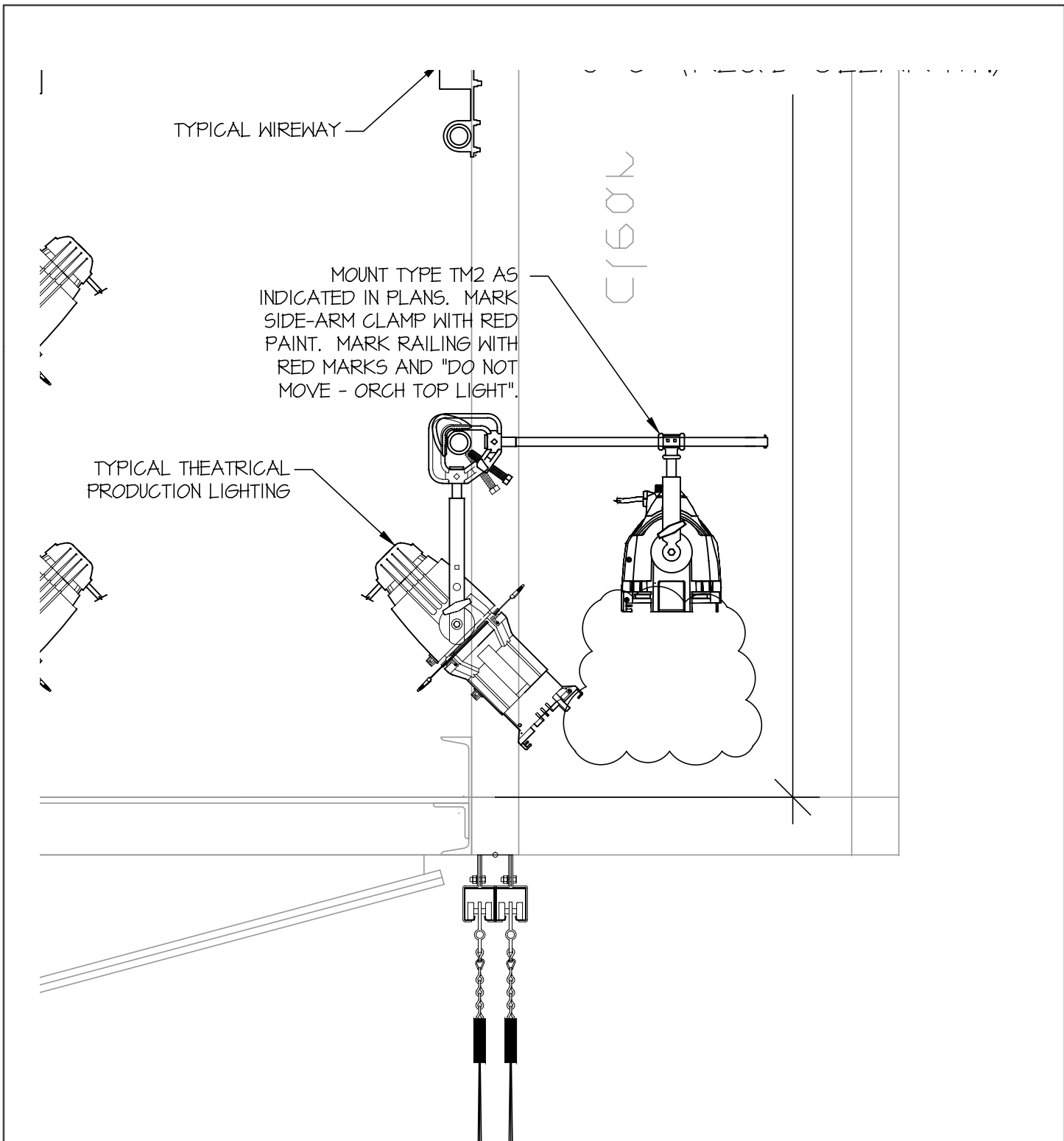
**SOUTHWEST AREA  
 HIGH SCHOOL**  
 7651 SOUTH HUMAN  
 CHICAGO, IL 60652  
**CHICAGO PUBLIC SCHOOLS**  
 CAPITAL PROGRAM NEW  
 CONSTRUCTION  
 CITY OF CHICAGO  
 MAYOR RICHARD M. DALEY



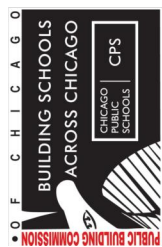
Date: 06/04/2010  
 Ref: Sheet E5/TH 1.03  
 PBC Contract No: 05140  
 STR Project No: 09014

Sketch Title:  
**THEATRE LIGHTING  
 CEILING REVISIONS**

Sketch No:  
**AD01-  
 TH02**



**B3** STAGE CATWALK DETAIL (PARTIAL)  
 AD01-TH03 SCALE: NONE



**SOUTHWEST AREA HIGH SCHOOL**  
 7651 SOUTH HOMAN  
 CHICAGO, IL 60652  
**CHICAGO PUBLIC SCHOOLS**  
 CAPITAL PROGRAM NEW CONSTRUCTION  
 CITY OF CHICAGO  
 MAYOR RICHARD M. DALEY

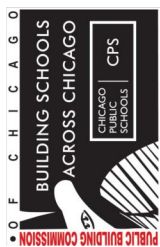
**STR** | **nia**  
 COLLABORATIVE  
**STR PARTNERS LLC**  
 350 WEST ONTARIO, SUITE 200  
 CHICAGO ILLINOIS 60654  
 P. 312.464.1444  
**NIA ARCHITECTS INC**  
 1130 SOUTH WABASH, SUITE 200  
 CHICAGO ILLINOIS 60605  
 P. 312.431.9515

Date: 06/042010  
 Ref: Sheet B3/TH1.04  
 PBC Contract No: 05140  
 STR Project No: 09014

Sketch Title:  
**THEATRE LIGHTING STAGE CATWALK DET.**  
 Sketch No:  
**AD01-TH03**

223	DEDICATED ORCH DOWN CAT 3		DIMMER	575	TYPE TM2
224	DEDICATED ORCH DOWN CAT 3		DIMMER	575	TYPE TM2
225	AUDIO CONTROL FL	EM	NON-DIM		SEE ELEC DWG
226	LIGHTING CONTROL FL	EM	NON-DIM		SEE ELEC DWG
227	FOLLOWSPOT FL	EM	NON-DIM		SEE ELEC DWG
228	ADA SEATING C-106	EM	NON-DIM		SEE ELEC DWG
229	CATWALK WORK LIGHTS	EM	NON-DIM	728	TYPE TG1
230	SIDE DOWN LIGHTS	EM	NON-DIM	1246	TYPE TF
231	HOUSE LIGHTS		DIMMER	1725	PB-C-12; C-21; C-30
232	HOUSE LIGHTS		DIMMER	1725	PB-C-14; C-23; C-32
233	HOUSE LIGHTS		DIMMER	1725	PB-C-15; C-24; C-33
234	HOUSE LIGHTS		DIMMER	1725	PB-C-16; C-25; C-34
235	HOUSE LIGHTS		DIMMER	1725	PB-C-18; C-27; C-36
236	HOUSE LIGHTS		DIMMER	1725	PB-C-39; C-48; C-57
237	HOUSE LIGHTS		DIMMER	1725	PB-C-45; C-54; C-63
238	HOUSE LIGHTS		DIMMER	1725	PB-C-41; C-42; C-43
239	HOUSE LIGHTS		DIMMER	1725	PB-C-50; C-51; C-52
240	HOUSE LIGHTS		DIMMER	1725	PB-C-59; C-60; C-61
241	HOUSE LIGHTS		DIMMER	1725	PB-C-66; C-67; C-68
242	SPARE		DIMMER		
243	AISLE LIGHTS	EM	DIMMER	1125	PB-C-11; C-28; C-29
244	AISLE LIGHTS	EM	DIMMER	1125	PB-C-13; C-26; C-31
245	AISLE LIGHTS	EM	DIMMER	1125	PB-C-17; C-22; C-35
246	AISLE LIGHTS	EM	DIMMER	1125	PB-C-19; C-20; C-37
247	AISLE LIGHTS	EM	DIMMER	1125	PB-C-38; C-55; C-56
248	AISLE LIGHTS	EM	DIMMER	1125	PB-C-44; C-48; C-58; C-62
249	AISLE LIGHTS	EM	DIMMER	1125	PB-C-49; C-53; C61; C-65
250	AISLE LIGHTS	EM	DIMMER	1125	PB-C46; C47; C64
251	BACKSTAGE RUNNING LIGHTS		DIMMER	480	TYPE TG2
252	CONTROL BOOTH RUNNING LTS		DIMMER	150	TYPE TTA
253	CONTROL BOOTH RUNNING LTS		DIMMER	225	TYPE TTA
254	CONTROL BOOTH RUNNING LTS		DIMMER	225	TYPE TTA
255	FRONT OF HOUSE HOIST SL		NON-DIM		PS-A-1
256	FRONT OF HOUSE HOIST SL		NON-DIM		PS-A-1
257	FRONT OF HOUSE HOIST SL		NON-DIM		PS-A-1
258	FRONT OF HOUSE HOIST SL		NON-DIM		PS-A-1
259	FRONT OF HOUSE HOIST SL		NON-DIM		PS-A-1

**A1** THEATRE LIGHTING - DIMMER SCHEDULE  
 AD01-TH04 SCALE: NONE



**SOUTHWEST AREA  
 HIGH SCHOOL**  
 7651 SOUTH HOMAN  
 CHICAGO, IL 60652  
**CHICAGO PUBLIC SCHOOLS**  
 CAPITAL PROGRAM NEW  
 CONSTRUCTION  
 CITY OF CHICAGO  
 MAYOR RICHARD M. DALEY



Date: 06/04/2010  
 Ref: Sheet A1/TH1.21  
 PBC Contract No: 05140  
 STR Project No: 09014

Sketch Title:  
**THEATRE LIGHTING  
 DIMMER SCHEDULE**  
 Sketch No:  
**AD01-  
 TH04**

**SOUTHWEST AREA  
 HIGH SCHOOL**  
 7651 SOUTH HOMAN  
 CHICAGO, IL 60652  
**CHICAGO PUBLIC SCHOOLS**  
 CAPITAL PROGRAM NEW  
 CONSTRUCTION  
 CITY OF CHICAGO  
 MAYOR RICHARD M. DALEY

**STR** **nia**  
 COLLABORATIVE  
 STR PARTNERS LLC  
 350 WEST ONTARIO, SUITE 200  
 CHICAGO ILLINOIS 60654  
 P. 312.464.1444  
 NIA ARCHITECTS INC  
 1130 SOUTH WABASH, SUITE 200  
 CHICAGO ILLINOIS 60605  
 P. 312.431.9515

Date:	06/01/2010
Ref:	Sheet S0.01
PBC Contract No:	05140
STR Project No:	09014

Sketch Title:  
**MASONRY GENERAL  
 NOTES**

Sketch No:  
**AD01-  
 S01**

MS.06 PROVIDE SOLID GROUTED MASONRY UNITES FOR 3 COURSES DEEP BY 32" WIDE, MINIMUM, UNDER ALL BEAM AND INTEL BEARING, UNLESS SHOWN OTHERWISE.

MS.07 ALL ANCHOR BOLTS CAST IN MASONRY SHALL BE ASTM A307. ALL EXPANSION BOLTS IN MASONRY SHALL BE MANUFACTURED BY HILTI OR EQUAL.

MS.08 ALL REINFORCING STEEL IN MASONRY SHALL BE HIGH STRENGTH NEW BILLET STEEL CONFORMING TO THE LATEST EDITION OF ASTM A615, GRADE 60.

MS.09 ALL REINFORCING STEEL TO BE PLACED IN FULLY GROUTED CELLS OF MASONRY UNIT.

MS.10 MASONRY WALL UNIT LOADS ARE AS FOLLOWS:  
 4" + 10" CMU 112 PSF  
 10" CMU 67 PSF  
 8" CMU 54 PSF

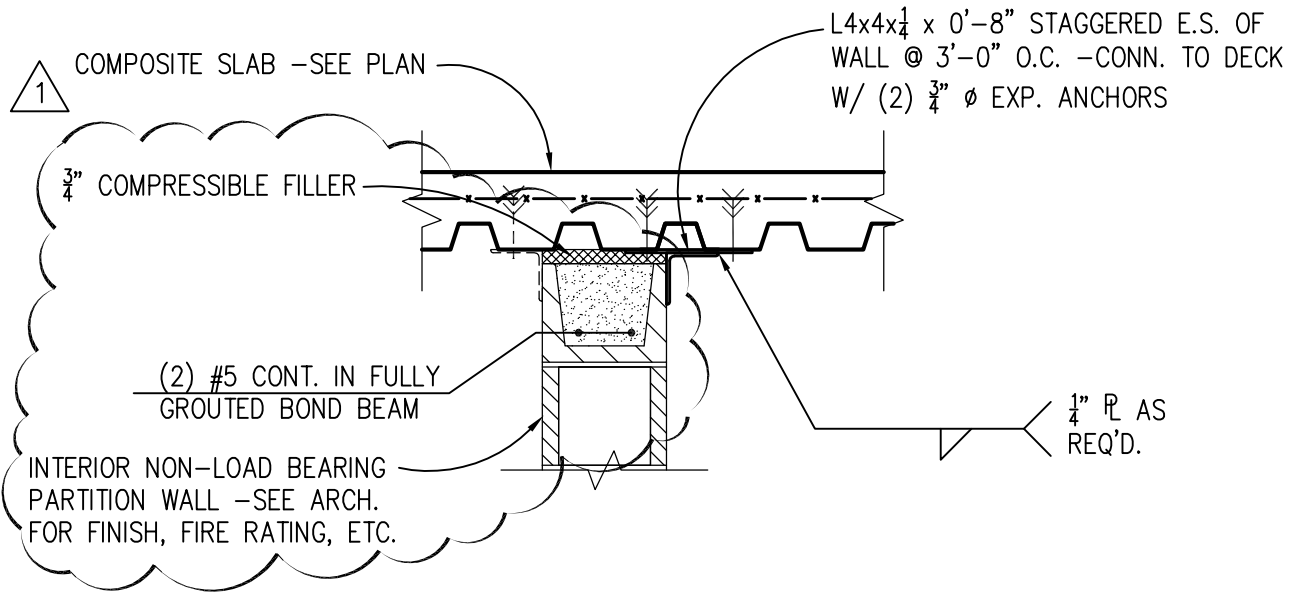
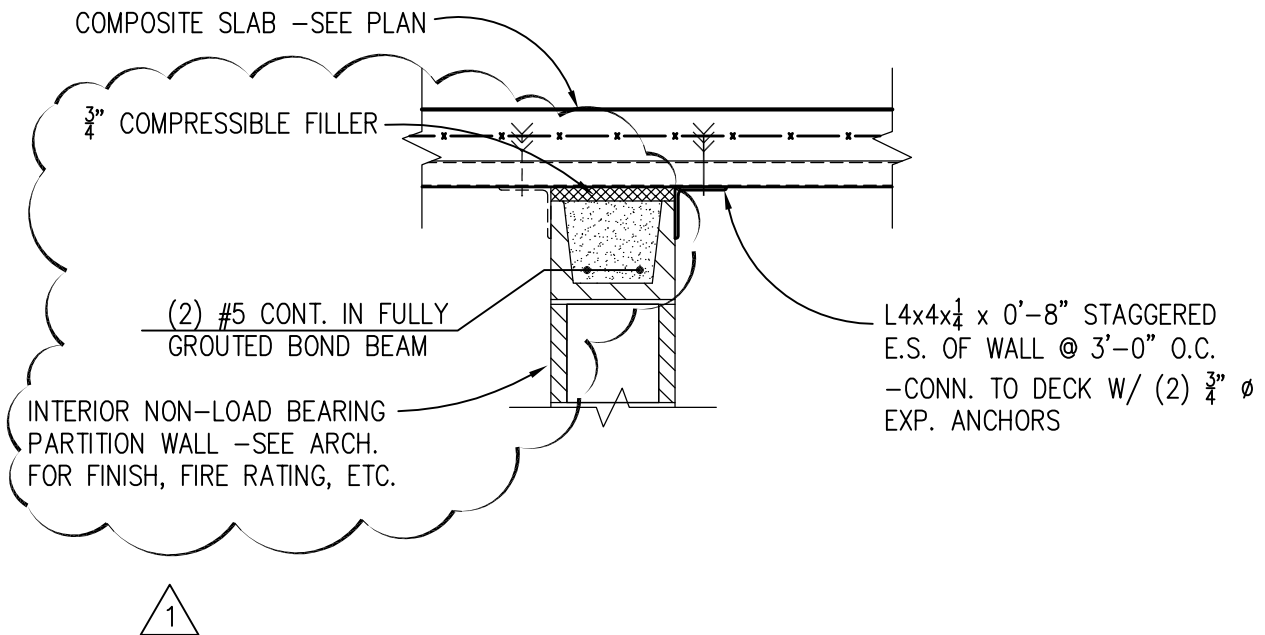
MS.11 REINFORCE ALL EXTERIOR CMU WALLS WITH #5 @ 32" O.C. MIN. FULL HEIGHT, IN SOLID GROUTED CELLS. PROVIDE A VERTICAL REINFORCING BAR AT WALL INTERSECTIONS, AT ENDS OF WALLS, AND AT EDGES OF OPENINGS GREATER THAN 2'-0" IN WIDTH.

MS.12 PROVIDE MIN. #5 @ 32" O.C. HOOKED DOWELS INTO FRAMED CONCRETE SLABS AT ALL EXTERIOR MASONRY WALLS - 2'-4" PROJECTION WITH 6" HOOK.

MS.13 PROVIDE MIN. #4 @ 48" O.C. HOOKED DOWELS INTO ALL CONCRETE SLABS AT ALL INTERIOR MASONRY WALLS - 2'-4" PROJECTION WITH 6" HOOK.

MS.14 PROVIDE #5 @ 32" O.C. MASONRY DOWELS INTO FOUNDATION WALLS AT ALL EXTERIOR MASONRY WALLS - 3'-0" EMBED. INTO FOUNDATION WALL & 2'-4" PROJECTION INTO MASONRY WALL.

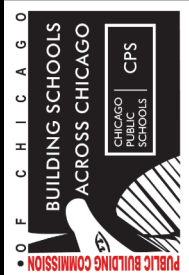




# TYP. NON-LOAD BEARING WALL STABILIZING ANGLE DETAIL

11  
S4.08

SCALE: 3/4"=1'-0"



**SOUTHWEST AREA HIGH SCHOOL**  
7651 SOUTH HOMAN  
CHICAGO, IL 60652

**CHICAGO PUBLIC SCHOOLS**  
CAPITAL PROGRAM NEW CONSTRUCTION  
CITY OF CHICAGO  
MAYOR RICHARD M. DALEY

**STR** | **nia**

COLLABORATIVE

STR PARTNERS LLC  
350 WEST ONTARIO, SUITE 200  
CHICAGO ILLINOIS 60654  
P. 312.464.1444

NIA ARCHITECTS INC  
1130 SOUTH WABASH, SUITE 200  
CHICAGO ILLINOIS 60605  
P. 312.431.9515

Date: 06/01/2010

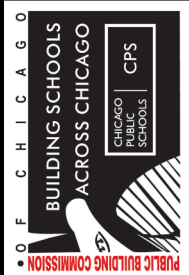
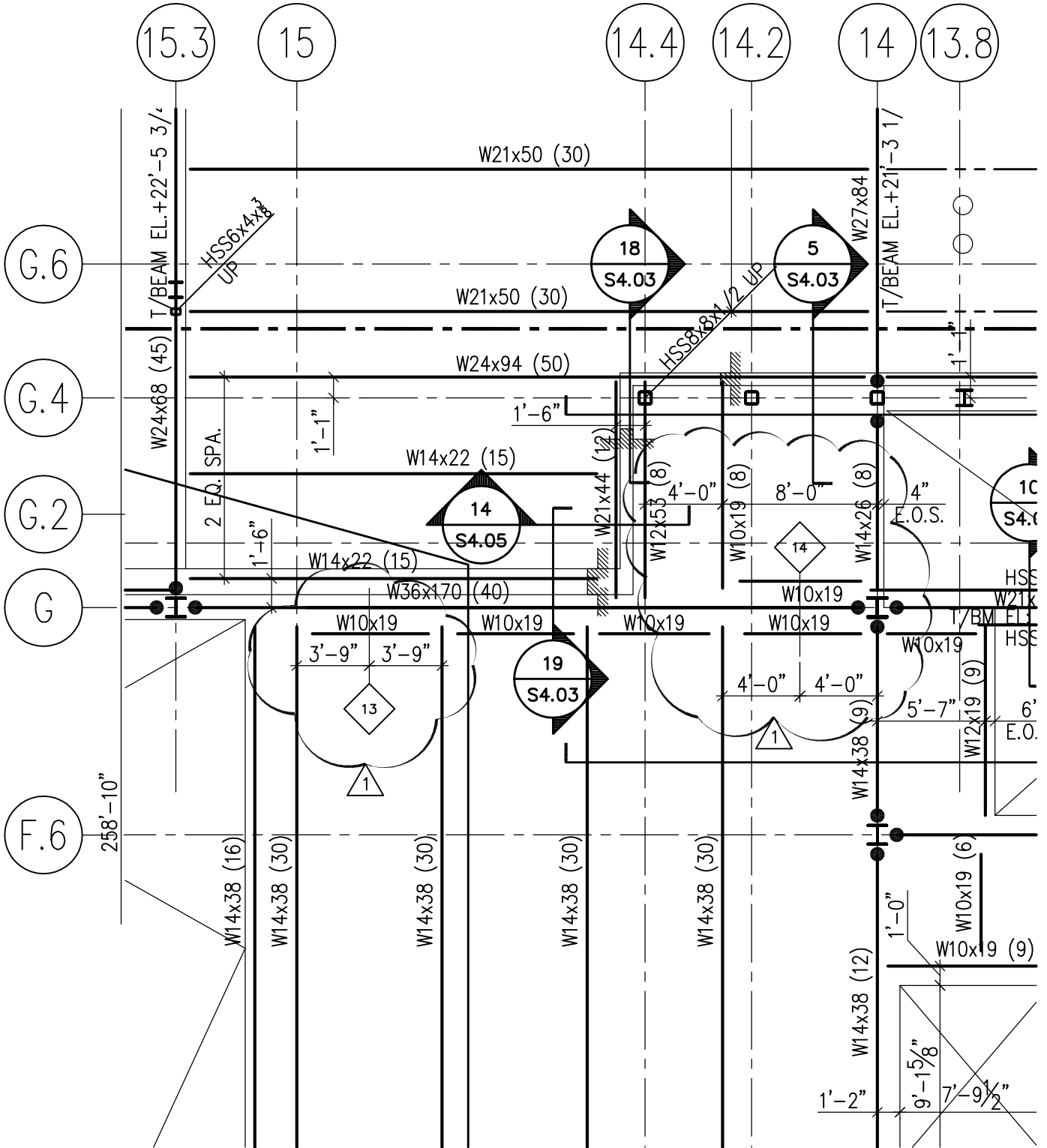
Ref: Sheet S4.08

PBC Contract No: 05140

STR Project No: 09014

Sketch Title: TYP. NON-LOAD BRG. WALL STABILIZING ANGLE DETAIL

Sketch No: **AD01-S02**

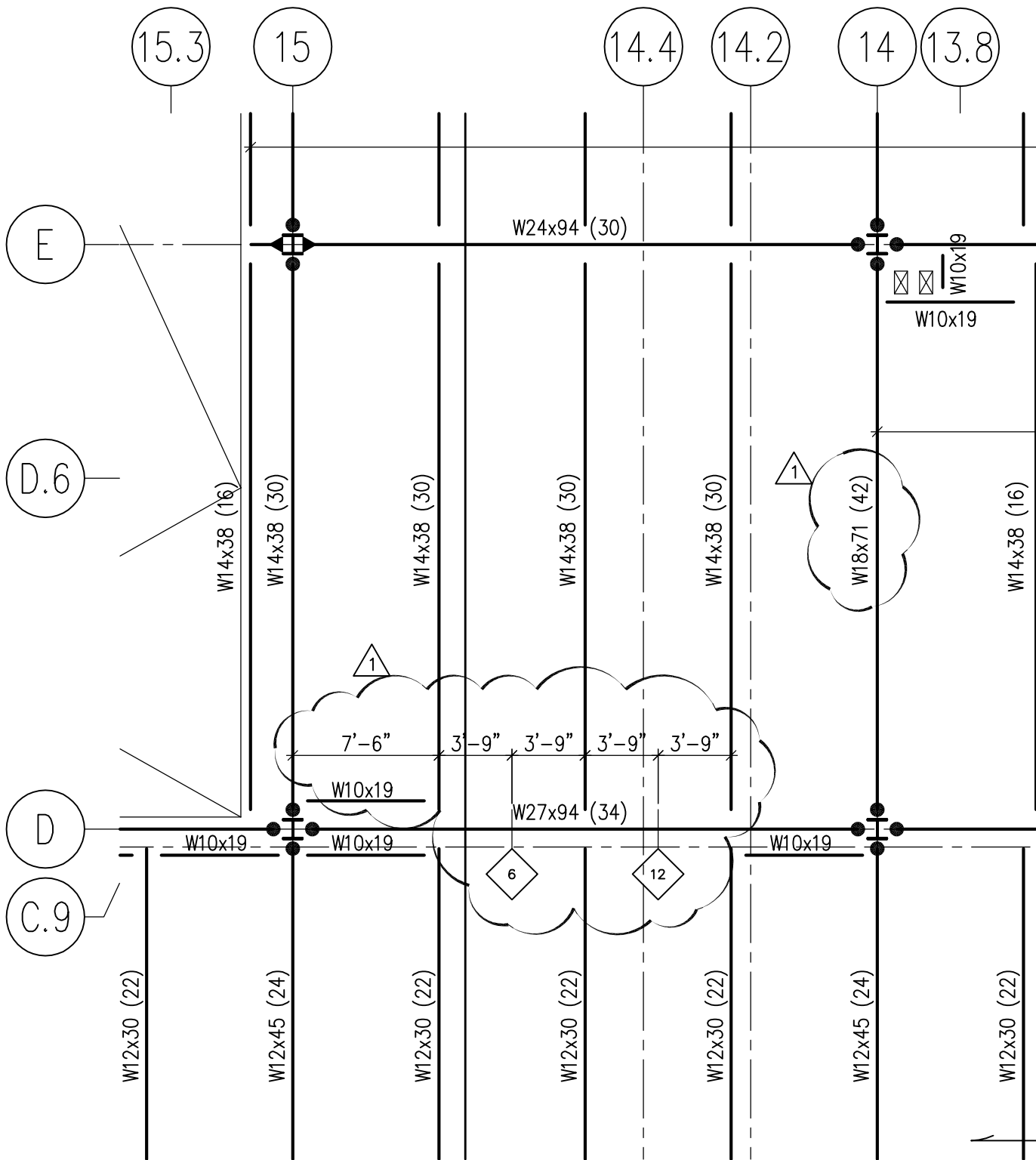


**SOUTHWEST AREA HIGH SCHOOL**  
 7651 SOUTH HOMAN  
 CHICAGO, IL 60652  
**CHICAGO PUBLIC SCHOOLS**  
 CAPITAL PROGRAM NEW CONSTRUCTION  
 CITY OF CHICAGO  
 MAYOR RICHARD M. DALEY

**STR** | **nia**  
 COLLABORATIVE  
 STR PARTNERS LLC  
 350 WEST ONTARIO, SUITE 200  
 CHICAGO ILLINOIS 60654  
 P. 312.464.1444  
 NIA ARCHITECTS INC  
 1130 SOUTH WABASH, SUITE 200  
 CHICAGO ILLINOIS 60605  
 P. 312.431.9515

Date: 06/01/2010  
 Ref: Sheet S1.02a  
 PBC Contract No: 05140  
 STR Project No: 09014

Sketch Title:  
**2ND FLOOR FRAMING PLAN**  
 Sketch No: **AD01-S03**



**SOUTHWEST AREA HIGH SCHOOL**  
 7651 SOUTH HOMAN  
 CHICAGO, IL 60652  
**CHICAGO PUBLIC SCHOOLS**  
 CAPITAL PROGRAM NEW CONSTRUCTION  
 CITY OF CHICAGO  
 MAYOR RICHARD M. DALEY

**STR** | **nia**  
 COLLABORATIVE  
 STR PARTNERS LLC  
 350 WEST ONTARIO, SUITE 200  
 CHICAGO ILLINOIS 60654  
 P. 312.464.1444  
 NIA ARCHITECTS INC  
 1130 SOUTH WABASH, SUITE 200  
 CHICAGO ILLINOIS 60605  
 P. 312.431.9515

Date: 06/01/2010  
 Ref: Sheet S1.02a  
 PBC Contract No: 05140  
 STR Project No: 09014

Sketch Title:  
**2ND FLOOR FRAMING PLAN**  
 Sketch No: **AD01-S04**

MK	SIZE OF OPNG. W x H OR $\phi$	MIN. RADIUS, R	X=D/2, U.N.O.	REMARKS
1	12"x10"	$\frac{3}{4}$ "	-	
2	16"x16"	$\frac{3}{4}$ "	-	
3	30"x16"	$\frac{3}{4}$ "	-	
4	30"x16"	$\frac{3}{4}$ "	-	
5	30"x16"	$\frac{3}{4}$ "	-	
6	20"x16"	$\frac{3}{4}$ "	-	
7	20"x14"	$\frac{3}{4}$ "	19"	
8	28"x14"	$\frac{3}{4}$ "	19"	
9	14" $\phi$	N/A	-	
10	14"x12"	$\frac{3}{4}$ "	-	
11	16"x12"	$\frac{3}{4}$ "	-	
12	26"x16"	$\frac{3}{4}$ "	-	
13	18"x16"	$\frac{3}{4}$ "	19 $\frac{1}{2}$ "	
14	20"x16"	$\frac{3}{4}$ "	19 $\frac{1}{2}$ "	

**NOTES:**

1. NO CONCENTRATED LOAD MAY BE APPLIED OVER THE OPENING.
2. NO CONCENTRATED LOAD MAY BE APPLIED WITHIN D OF EITHER EDGE OF THE OPENING UNLESS BEARING STIFFENERS ARE PROVIDED.

1

1

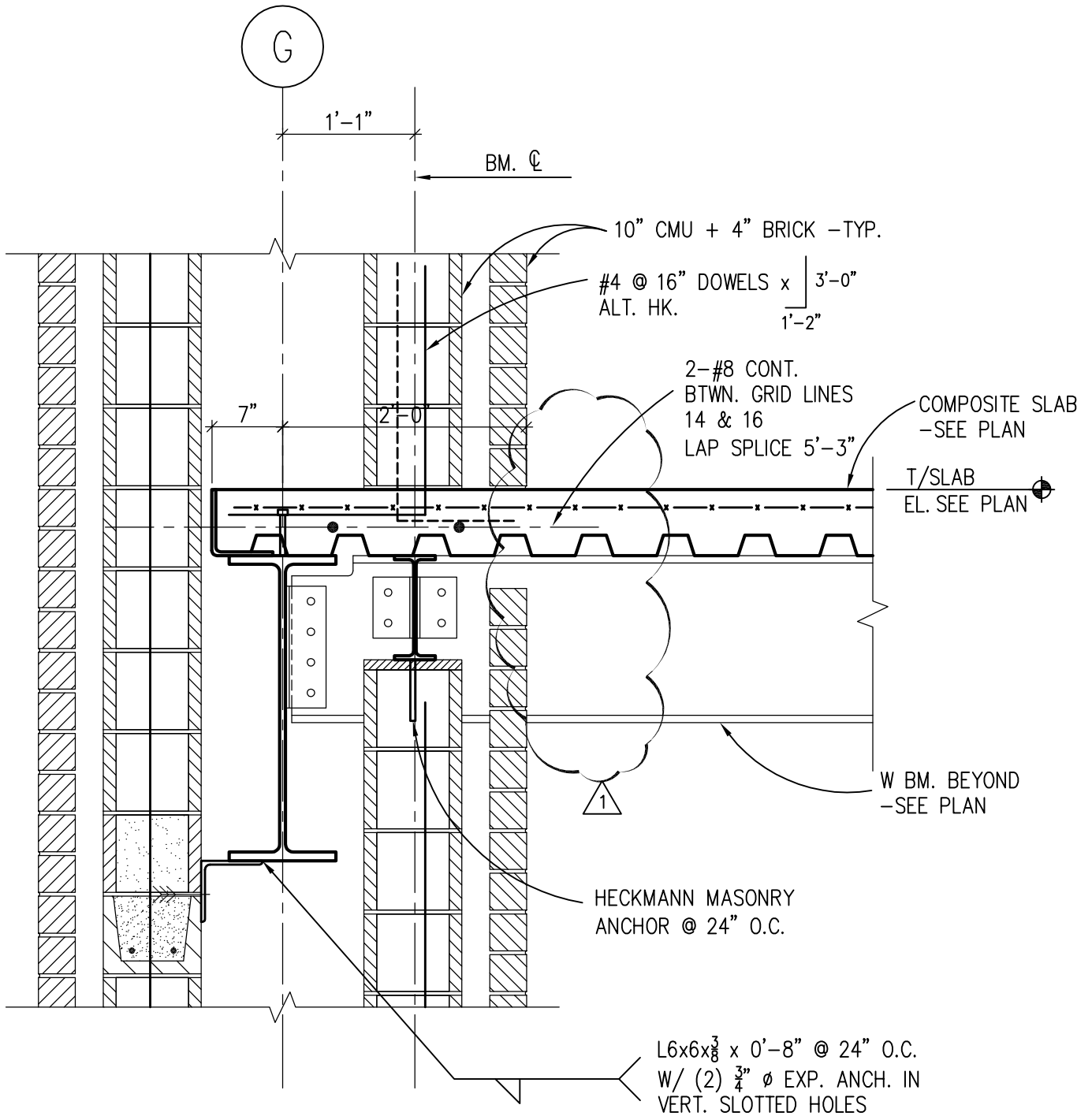


**SOUTHWEST AREA HIGH SCHOOL**  
 7651 SOUTH HOMAN  
 CHICAGO, IL 60652  
**CHICAGO PUBLIC SCHOOLS**  
 CAPITAL PROGRAM NEW  
 CONSTRUCTION  
 CITY OF CHICAGO  
 MAYOR RICHARD M. DALEY

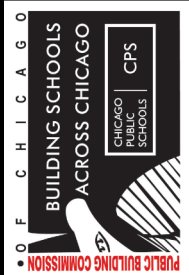
**STR** | **nia**  
 COLLABORATIVE  
 STR PARTNERS LLC  
 350 WEST ONTARIO, SUITE 200  
 CHICAGO ILLINOIS 60654  
 P. 312.464.1444  
 NIA ARCHITECTS INC  
 1130 SOUTH WABASH, SUITE 200  
 CHICAGO ILLINOIS 60605  
 P. 312.431.9515

Date: 06/01/2010  
 Ref: Sheet S4.02  
 PBC Contract No: 05140  
 STR Project No: 09014

Sketch Title:  
**DETAIL 10 - BEAM WEB  
 OPENING SCHED.**  
 Sketch No: **AD01-S05**



**15** **FRAMING DETAIL**  
**S4.05** SCALE: 3/4"=1'-0"

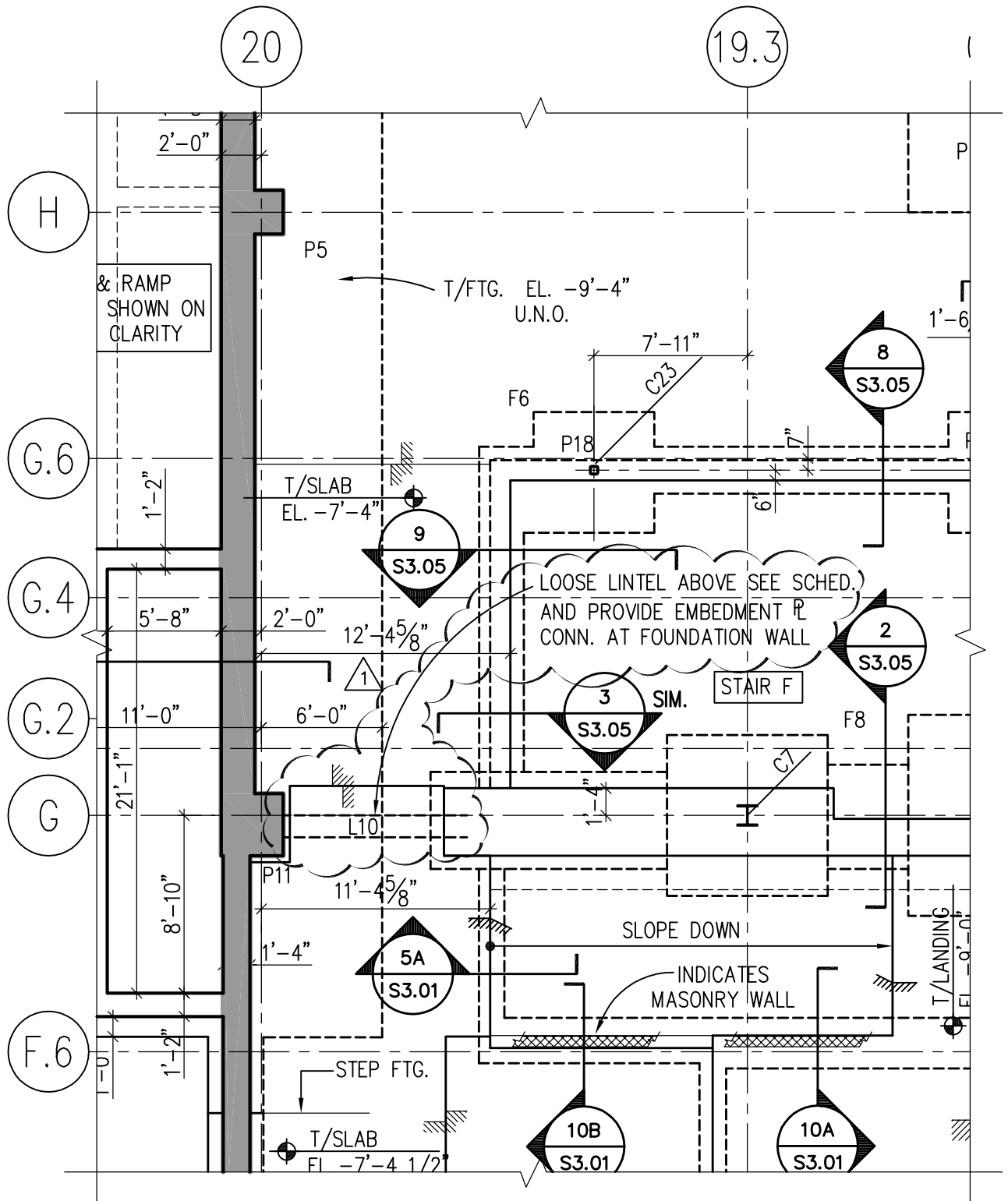


**SOUTHWEST AREA HIGH SCHOOL**  
 7651 SOUTH HOMAN  
 CHICAGO, IL 60652  
**CHICAGO PUBLIC SCHOOLS**  
 CAPITAL PROGRAM NEW CONSTRUCTION  
 CITY OF CHICAGO  
 MAYOR RICHARD M. DALEY

**STR** **nia**  
 COLLABORATIVE  
 STR PARTNERS LLC  
 350 WEST ONTARIO, SUITE 200  
 CHICAGO ILLINOIS 60654  
 P. 312.464.1444  
 NIA ARCHITECTS INC  
 1130 SOUTH WABASH, SUITE 200  
 CHICAGO ILLINOIS 60605  
 P. 312.431.9515

Date: 06/01/2010  
 Ref: Sheet S4.05  
 PBC Contract No: 05140  
 STR Project No: 09014

Sketch Title: **DETAIL 15 - FRAMING DETAIL**  
 Sketch No: **AD01-S06**



**SOUTHWEST AREA HIGH SCHOOL**  
 7651 SOUTH HOMAN  
 CHICAGO, IL 60652  
**CHICAGO PUBLIC SCHOOLS**  
 CAPITAL PROGRAM NEW CONSTRUCTION  
 CITY OF CHICAGO  
 MAYOR RICHARD M. DALEY

**STR nia**  
 COLLABORATIVE  
 STR PARTNERS LLC  
 350 WEST ONTARIO, SUITE 200  
 CHICAGO ILLINOIS 60654  
 P. 312.464.1444  
 NIA ARCHITECTS INC  
 1130 SOUTH WABASH, SUITE 200  
 CHICAGO ILLINOIS 60605  
 P. 312.431.9515

Date: 06/02/2010  
 Ref: Sheet S1.00a  
 PBC Contract No: 05140  
 STR Project No: 09014

Sketch Title:  
**FOUNDATION PLAN - AREA A**  
 Sketch No: **AD01-S07**

**ASSUMED EXCAVATION/CONSTRUCTION SEQUENCE**  
**CRITICAL SHEET PILE DESIGN CASE**

1. Excavate to Basement Level – EL. -11.83'
2. Dry Excavation Maintained Handling Surface Water & Any Infiltration
3. Drive Sheet piling to Minimum Tip Elevations – Elevations Vary
4. Excavate to Bottom of Base Building Footings
5. Continue Maintaining Dry Excavations
6. Construct Interior and Ext. Wall Footings and Stems
7. Assumed Backfill Placed Front of Wall Footing to Grade – EL. 0.0'
8. Excavate to EL. -25.0 ±' to Install Pool Base Fill & Drainage Layer
9. Sheet piling Left-In-Place and Used as Forms for Pool Concrete Walls

**THE ABOVE-REFERENCED PROCEDURES FOR INSTALLATION OF THE EARTH RETENTION SYSTEM ARE PROVIDED FOR REFERENCE ONLY. THESE WERE INCLUDED AS PART OF THE DESIGN DOCUMENTS AND CALCULATIONS SUBMITTED TO THE OFFICE OF UNDERGROUND COORDINATION FOR THE EXPRESS PURPOSE OF OBTAINING A BUILDING PERMIT. THE CONTRACTOR IS NOT OBLIGATED TO FOLLOW THESE PROCEDURES; HOWEVER, ANY ALTERNATE PROCEDURES MUST BE APPROVED BY THE OFFICE OF UNDERGROUND COORDINATION AND MUST COMPLY WITH THE FOLLOWING CRITERIA:**

CONTRACTOR MAY ELECT AN ALTERNATE SEQUENCE OF CONSTRUCTION. CONTRACTOR'S ALTERNATE SEQUENCE OF CONSTRUCTION SHALL NOT RESULT IN ANY INCREASE IN SHEET PILE WALL LOADING, INCLUDING TEMPORARY CONSTRUCTION SURCHARGES, ABOVE THAT WHICH WAS ASSUMED IN THE CONSTRUCTION SEQUENCE FOR THE CRITICAL SHEET PILE DESIGN CASE. IN ADDITION TO MAINTAINING DRY EXCAVATIONS FROM SURFACE WATER AND ANY OTHER WATER INFILTRATION, THAT CASE ASSUMED THE SHEET PILE WOULD BE DRIVEN FROM THE BASEMENT GRADE AT EL. -11.83', AND THAT BUILDING INTERIOR AND EXTERIOR FOOTINGS AND STEMS WOULD THEN BE CONSTRUCTED. THE WALL FOOTING ALONG ROW 11, IN THE CRITICAL DESIGN CASE, IS SHOWN IN SECTION C ON DRAWING ERS-2, AND IT WAS ASSUMED THAT THE BACKSIDE OF THE WALL WOULD BE BACKFILLED TO GRADE, EL. 0.0'. EXCAVATION FOR THE INTERIOR POOL AREA WOULD THEN TAKE PLACE FOR CONSTRUCTION OF THE POOL CONCRETE SLAB AND WALLS. ANY ALTERNATE SEQUENCE OF CONSTRUCTION THAT WOULD RESULT IN GREATER LOADING OF THE SHEET PILE WALL WILL REQUIRE THE CONTRACTOR TO PREPARE AND SUBMIT A SUBMITTAL TO THE AOR AND THE OUC FOR APPROVAL PRIOR TO IMPLEMENTATION, AT NO COST TO THE OWNER.



**SOUTHWEST AREA  
HIGH SCHOOL**  
 7651 SOUTH HOMAN  
 CHICAGO, IL 60652

**CHICAGO PUBLIC SCHOOLS**  
 CAPITAL PROGRAM NEW  
 CONSTRUCTION  
 CITY OF CHICAGO  
 MAYOR RICHARD M. DALEY



Date: 06/04/2010  
 Ref: Sheet ERS1.0

---

PBC Contract No: 05140  
 STR Project No: 09014

Sketch Title:  
**SHEET PILING  
 CONST. SEQUENCE**

---

Sketch No: **AD01-  
 ERS01**