



Public Building Commission of Chicago

Board Meeting
August 20, 2013





Board Meeting
August 20, 2013

Recent Events



Enrico Tonti Elementary School Kindergarten Modular Opening August 5, 2013

Board Meeting
August 20, 2013



- The Modular buildings provided are constructed offsite in five sections and assembled onsite to create four classroom modular buildings (modulars).
- The color of each modular was selected to match the existing school.
- The Modular buildings are approximately 70' X 70' (4,780 sf each) placed on concrete foundations at grade.
- The modulars have full restroom facilities, are fully sprinklered, and each classroom is separately heated and air-conditioned.



CPS-Full Day Kindergarten Initiative Modular Program

Board Meeting
August 20, 2013

- William P. Gray Elementary School (August 9, 2013)
- Enrico Tonti Elementary School (August 9, 2013)
- Mary Lyon Elementary School (August 16, 2013)
- Everett McKinley Dirksen Elementary School (August 16, 2013)
- Josephine C. Locke Elementary School (August 21, 2013)
- Little Village Elementary School (August 21, 2013)





Back of the Yards Campus- CPS College Preparatory High School & CPL Branch Library Opening August 8, 2013

Board Meeting
August 20, 2013





Back of the Yards Campus- CPS College Preparatory High School & CPL Branch Library Opening August 8, 2013

Board Meeting
August 20, 2013





Board Meeting
August 20, 2013

Back of the Yards Campus- CPS College Preparatory High School & CPL Branch Library Opening August 8, 2013



- By working together, CPS and CPL can maximize their resources to meet the needs of students and community residents. The campus has been designed so that independent access can be granted to the library and athletic amenities when school is not in session.
- The campus has been designed to be high-tech with both wired and wireless internet access, sustainably designed to achieve LEED Silver Certification and fully accessible to people with disabilities.
- College preparatory high school with space to serve 1,200 students
The new high school will offer a “wall-to-wall” International Baccalaureate Program (IB).



Board Meeting
August 20, 2013

Back of the Yards Campus- CPS College Preparatory High School & CPL Branch Library Opening August 8, 2013



- 26 Standard Academic Classrooms
 - 5 Computer Labs
 - 6 Science Labs
 - 2 Visual Arts Classrooms
 - 2 Performing Arts Classrooms
 - Scene Shop, Dressing Rooms & Green Room
 - College Resource Center
 - Library/Media Resource Center
 - Gymnasium (Two Station)
 - 1 Natatorium with 6 Lane Pool
 - Multipurpose Room/Athletic Studio
 - Fitness/Weight Room
- Exterior amenities for the campus include combination soccer and football field with bleachers, softball diamond, tennis courts, parking lot, entry plaza and an outdoor reading garden.



Board Meeting
August 20, 2013

Back of the Yards Campus- CPS College Preparatory High School & CPL Branch Library Opening August 8, 2013



- As part of the campus, Chicago Public Library will also open a full-service public library branch to serve the community.
- The branch will also offer teen-focused collections and digital learning and community services. The new branch features adult, teen and children collections and reading areas, teen media lab, community room, 25 computers and reading garden.



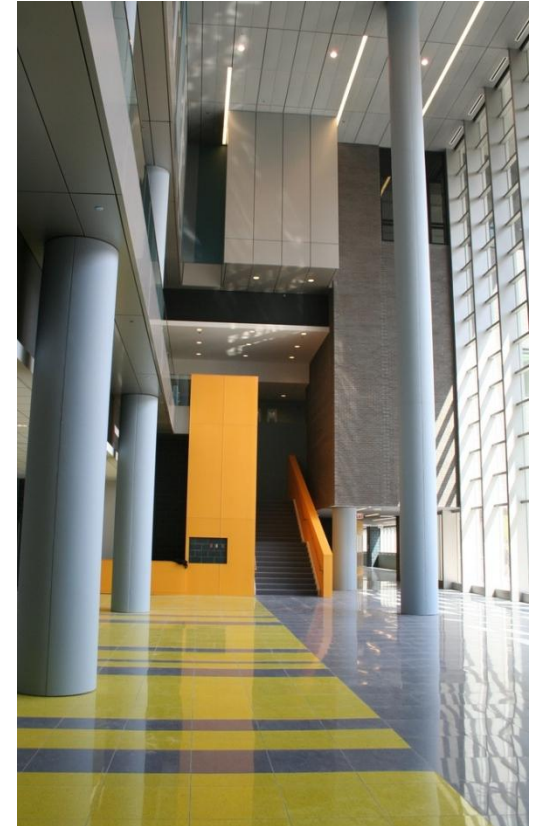
Board Meeting
August 20, 2013

William Jones College Preparatory High School Opening August 20, 2013

- 278,000 Square Feet
- 7-Floors plus Lower Level
- Steel Frame Construction
- Capacity: 1700 Students (including freshman campus)

New Building Features

- 26 Standard Academic Classrooms
- 5 Computer Labs
(including a distance learning lab)
- 6 Science Labs
- 1 Pre-Engineering Lab
- 2 Visual Arts Classrooms
- 2 Performing Arts Classrooms
- 4 OSES Classrooms
- Auditorium
- Scene Shop, Dressing Rooms & Green Room
- College Resource Center
- Library/Media Resource Center
- Gymnasium (Two Station)
- 1 Natatorium with 6 Lane Pool
- Multipurpose Room/Athletic Studio
- Fitness/Weight Room
- Administrative Suite
- Nurse and Student Support Service
- Kitchen and Dining Facilities






Board Meeting
August 20, 2013

Reports

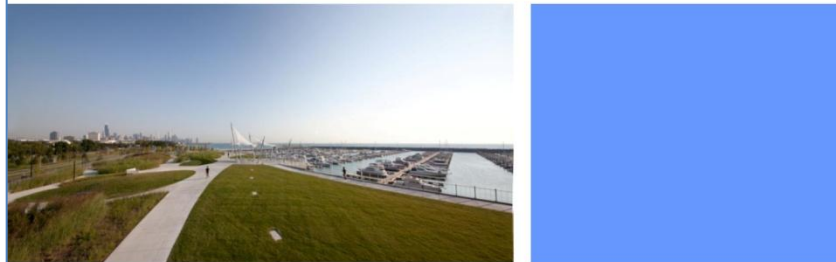


Board Meeting
August 20, 2013

2013 Q2 Staff Reports



Public Building Commission of Chicago
Quarterly Staff Reports
2013: Second Quarter





Board Meeting
August 20, 2013

Q2 2013 Staff Reports

1. **Letter from Executive Director & Executive Summary Report**
The details included in the 2013 Q2 Staff Report are intended to communicate project status, analyze market trends and communicate performance metrics.
2. **Program Forecast Report**
This report has been developed for distribution to the Board, clients and MBE/WBE Assistance Agencies as well as prospective bidders to share upcoming opportunities and milestones for projects in Planning, Design, and Construction.
3. **Market Conditions Report**
This graphic illustrates comparative costs of like buildings, thereby tracking market trends.



Board Meeting
August 20, 2013

Q2 2013 Staff Reports

4. Program Cost Status Report

As of June 30, 2013, current multi-year program authority exceeds \$2.6B in project development cost. Currently, projects are under budget by 7.20%, representing a variance of \$187.8MM under the original undertaking budgets. A limited number of budget revisions have been authorized due to changes in project scope. Including these revisions projects are under budget by 7.58%, representing a variance of \$199MM under the revised undertaking budgets.

The PBC works closely with User Agency Staff throughout the development of a project to ensure that only the funds necessary to complete a project are raised.



Board Meeting
August 20, 2013

Q2 2013 Staff Reports

5. Program Cost Effectiveness Report

Recognizing the need to be good stewards of the public fund, in addition to getting competitive construction bids and managing projects to approved budgets, additional areas of focus include managing change orders and indirect project costs:

Open Projects Construction Change Order Q2 2013 Report

The approved change order % for construction projects is 3.0%. The projected change order % for all construction contracts is 5.0%, including potential change orders and those in process. These rates are **within the industry standard change order percentage** for new municipal and educational construction work at **3-5%**.

Indirect Costs as a Percentage of Construction Costs

The PBC tracks all project costs throughout the life of a project, including all Indirect Costs, also known as “soft costs” (Planning, Environmental Testing & Consulting, Design, and Program and Project Management) and all Construction Costs, also known as “hard costs” (Demolition, Site Prep, Utility Relocation and General Construction).

The PBC’s Indirect Costs average **16.48%** of Construction costs. The PBC’s Indirect Costs are particularly cost effective on large scale projects and programs, averaging 12.35% of construction costs on projects where construction is \$50M or higher. **This is consistently below the industry average of 25%.**



Board Meeting
August 20, 2013

Q2 2013 Staff Reports

6. Monthly Project Status Report

This report provides an individual detailed snapshot of every active PBC project.

7. Sustainable Development Q2 2013 Status Report

This report provides a detailed snapshot of the PBC's LEED certified projects and metrics. Through Q2 2013, the PBC has achieved LEED Certification on 57 municipally owned projects, with an additional 21 registered projects. The City of Chicago has more LEED certified municipally owned facilities than any other city in the nation.



Board Meeting
August 20, 2013

Q2 2013 Staff Reports

8. M/WBE Commitment Reports

M/WBE Construction Contract Commitment Report for Projects Awarded in 2013
Through Q2 2013, six contracts for General Construction (GC) projects were awarded, work orders on six Job Order Contract (JOC) were issued and one design-build contract was awarded. Below are the M/WBE Commitments at award:

Type	Total Contract Value	MBE Commitment	MBE Value (At Award)	WBE Commitment	WBE Value (At Award)
General Construction	\$41,437,082.00	25.58%	\$10,599,235.00	4.47%	\$1,850,613.00
JOC	\$7,151,986.72	22.02%	\$1,574,516.00	17.21%	\$1,231,188.00
Design Build	\$12,493,000.00	28.92%	\$3,612,585.36	8.84%	\$1,104,768.00
Total	\$61,082,068.72	25.84%	\$15,786,336.36	6.85%	\$4,186,569.00

M/WBE Professional Services Commitment Report for Projects Awarded in 2013
(AOR, Environmental Consultant-Category A, B, & C, Environmental Consultant-Reno & Demo, Traffic Study, Geotechnical Consultant, Commissioning Authority, Material Testing Service, Surveyor Service, Construction Signage and Comprehensive Printing Services)

Through Q2 2013, professional consulting services on three construction projects have been awarded. Below are the M/WBE Commitments at award:

Type	Total Contract Value	MBE Commitment	MBE Value (At Award)	WBE Commitment	WBE Value (At Award)
Professional Services	\$5,102,273.63	28.69%	\$1,463,860.43	22.92%	\$1,169,394.76



Board Meeting
August 20, 2013

Q2 2013 Staff Reports

9. M/WBE Compliance Reports

M/WBE & EEO Construction Contract Compliance Report for Projects Completed in 2013

Through Q2 2013, two construction projects were completed. Below is the M/WBE participation achieved on the projects as of Q2 2013:

Type	Total Contract Value	Total Paid to Date	MBE Participation Achieved	MBE Value Paid to Date	WBE Participation Achieved	WBE Value Paid to Date
General Construction	\$17,793,000.00	\$16,476,353.14	52.80%	\$8,669,019.94	4.86%	\$801,152.79

M/WBE Professional Services Compliance Report for 2013 Professional Service Contract Awards

(AOR, Environmental Consultant-Category A, B, & C, Environmental Consultant-Reno & Demo, Traffic Study, Geotechnical Consultant, Commissioning Authority, Material Testing Service, Surveyor Service, Construction Signage and Comprehensive Printing Services)

Type	Total Paid to Date	MBE Participation Achieved	MBE Value Paid to Date	WBE Participation Achieved	WBE Value Paid to Date
Professional Services	\$2,179,172.91	47.43%	\$1,033,647.15	9.70%	\$211,311.67



Board Meeting
August 20, 2013

Q2 2013 Staff Reports

10. Specialty Consultant Q2 2013 Award and Commitment Report

In the 2nd quarter of 2013, thirteen (13) task orders valuing \$1,111,254.38 were issued against the Specialty Consultant term contracts (Surveying, Commissioning, Environmental Categories A, B and C, Environmental Renovation / Demolition, Geotechnical, Traffic Study, and Construction Inspection and Material Testing.) Below are the M/WBE Commitments for these task orders at award:

Type	Total Contract Value	MBE Commitment	MBE Value (at Award)	WBE Commitment	WBE Value (at Award)
Specialty Consultant Awards	\$1,111,254.38	13%	\$140,120.08	27%	\$296,022.12

Brennan ES	
Brentano ES	
Chappell ES	
McCuthcheon & Branch ES	
McPherson ES	
Schurz HS	
Senn HS	
Stockton ES	
Taft HS	1
Lincoln Park HS	
Marshall MS	
Northwest MS	2
Chopin ES	
Clemente HS	
De Diego ES	
Jenner ES	
Lewis ES	
Morton ES	
Ryan ES	3
Beidler ES	
W. Brown ES	
Collier ES	
Chalmers ES	
Crane HS	
Faraday ES	
Herbert ES	
Jensen ES	
Juarez HS	
Otis ES	
Smyth ES	4
Delano ES	
Ellington ES	
Gregory ES	
Haffner ES	
May ES	5
Tilton ES	
Charles Hughes ES	
Johnson ES	
Lawndale ES	6
Summer ES	
Cardenas ES	
Castellanos ES	
Farragut HS	
Hammond ES	
Kennedy HS	
Talpochalli ES	7
Beethoven ES	
Bronzeville/DuSable HS	
Burke ES	
Mayo ES	
Mollison ES	
Pershing West MS	
Reavis ES	
Robinson ES	
Williams MS	8
Carter ES	
Dewey ES	
Harte ES	
Holmes ES	
Hope HS	
Roy ES	
Sexton ES	9
Sherwood ES	
Carnegie ES	
Dulles ES	
Dumas ES	
FermiES/South Shore FA	
Hyde Park HS	
O'Keeffe ES	10
Banneker ES	
Bass ES	
Bond ES	
Goodlow ES	
Harvard ES	
Nicholson ES	
O'Toole ES	11
Altgeld ES	
Barton ES	
Fr. Dearborn ES	12
Joplin ES	
Gresham ES	13
Ryder ES	
Ashe ES	
Bowen HS	14
Lawrence ES	
Barnard ES	
Cullen ES	
Langston Hughes ES	
Lavizzo ES	
Mt. Vernon ES	15
Reverse ES	
Carliss HS	
Curtis ES	
Haley ES	16
Aldridge ES	
Carver ES	
Esmond ES	
Gompers ES	17



SIP: School Investment Program

warm • dry • cool • secure • welcoming • inclusive • high-tech • purpose-built

2013 School Investment Program

As of August 13, 2013

Brennan ES	
Brentano ES	
Chappell ES	
McCullough & Branch ES	
McPherson ES	
Schurz HS	
Senn HS	
Stockton ES	
Taft HS	1
Lincoln Park HS	
Marshall HS	
Northwest MS	2
Chopin ES	
Clemente HS	
De Diego ES	
Jenner ES	
Lewis ES	
Morton ES	
Ryerson ES	3
Beidler ES	
W. Brown ES	
Collier ES	
Chalmers ES	
Crane HS	
Faraday ES	
Herbert ES	
Jensen ES	
Juarez HS	
Ortiz ES	
Smyth ES	4
Delano ES	
Ellington ES	
Gregory ES	
Haffner ES	
May ES	
Tilton ES	5
Charles Hughes ES	
Johnson ES	
Lawndale ES	
Summer ES	6
Cordenas ES	
Castellanos ES	
Farragut HS	
Hammond ES	
Kennedy HS	
Talpochalli ES	7
Beethoven ES	
Bronzeville/DuSable HS	
Burke ES	
Mayo ES	
Mollison ES	
Pershing West MS	
Reavis ES	
Robinson ES	
Williams MS	8
Carter ES	
Dewey ES	
Harte ES	
Holmes ES	
Hope HS	
Ray ES	
Sexton ES	
Sherwood ES	9
Carnegie ES	
Dulles ES	
Dumas ES	
Fermi/ES/South Shore FA	
Hyde Park HS	
O'Keefe ES	10
Banneker ES	
Bass ES	
Bond ES	
Goodlow ES	
Harvard ES	
Nicholson ES	
O'Toole ES	11
Altgeld ES	
Barton ES	
Fr. Dearborn ES	12
Joplin ES	
Gresham ES	13
Ryder ES	
Ashie ES	
Bowen HS	
Lawrence ES	14
Barnard ES	
Cullen ES	
Langston Hughes ES	
Lavizzo ES	
Mt. Vernon ES	15
Revere ES	
Carliss HS	
Curtis ES	
Haley ES	16
Aldridge ES	
Carver ES	
Esmond ES	
Gompers ES	17



SIP: School Investment Program

warm • dry • cool • secure • welcoming • inclusive • high-tech • purpose-built

Authority:

- PBC approved undertaking for the CPS 2013 School Investment Program (SIP) on 4/9/13. Pending CPS board action on school closings on April 24, 2013 and end of school year June 21, 2013.

Business Participation Outreach:

- Published RFQ requires 30% MBE participation and 5% WBE participation (higher than usual 24% MBE and 4% WBE)
- National Organization of Minority Architects (NOMA) and Engineers (NOME) 4/10/13
- Contractor outreach and networking session at Kennedy King College 4/12/13
- Chatham Business Association at the QBG foundation 4/16/13
- Building Trades Council 4/16/13
- Urban League 4/17/13, 4/23/13, 4/25/13

Brennan ES	
Brentano ES	
Chappell ES	
McCullough & Branch ES	
McPherson ES	
Schurz ES	
Senn HS	
Stockton ES	
Taft HS	1
Lincoln Park HS	
Marshall HS	
Northwest MS	2
Chopin ES	
Clemente HS	
De Diego ES	
Jenner ES	
Lewis ES	
Morton ES	
Ryerson ES	3
Beidler ES	
W. Brown ES	
Collier ES	
Chalmers ES	
Crane HS	
Faraday ES	
Herbert ES	
Jensen ES	
Juarez HS	
Otis ES	
Smyth ES	4
Delano ES	
Ellington ES	
Gregory ES	
Haffner ES	
May ES	
Tilton ES	5
Charles Hughes ES	
Johnson ES	
Lawndale ES	
Summer ES	6
Cordenas ES	
Castellanos ES	
Farragut HS	
Hammond ES	
Kennedy HS	
Talpochalli ES	7
Beethoven ES	
Bronzeville/DuSable HS	
Burke ES	
Mayo ES	
Mollison ES	
Pershing West MS	
Reavis ES	
Robinson ES	
Williams MS	8
Carter ES	
Dewey ES	
Harte ES	
Holmes ES	
Hope HS	
Roy ES	
Sexton ES	
Sherwood ES	9
Carnegie ES	
Dulles ES	
Dumas ES	
FermiES/South Shore FA	
Hyde Park HS	
O'Keefe ES	10
Banneker ES	
Bass ES	
Bond ES	
Goodlow ES	
Harvard ES	
Nicholson ES	
O'Toole ES	11
Altgeld ES	
Barton ES	
Fr. Dearborn ES	
Joplin ES	12
Gresham ES	
Ryder ES	13
Ashe ES	
Bowen HS	
Lawrence ES	14
Barnard ES	
Cullen ES	
Langston Hughes ES	
Lavizzo ES	
Mt. Vernon ES	15
Revere ES	
Carliss HS	
Curtis ES	
Haley ES	16
Aldridge ES	
Carver ES	
Esmond ES	
Gompers ES	17



SIP: School Investment Program

warm • dry • cool • secure • welcoming • inclusive • high-tech • purpose-built

Job Fairs:

Published RFQ required City Residency (50%) Community Hiring (7.5%) in addition to workforce diversity goals.

- Malcolm X College 5/31/13
- Salvation 6/4/13
- Truman College 6/7/13
- Salvation Army 6/11/13
- Plaza Arms 6/17/13
- Public Building Commission 7/1/13

Brenneman ES	
Brentano ES	
Chappell ES	
McCullough & Branch ES	
McPherson ES	
Schurz HS	
Senn HS	
Stockton ES	
Taft HS	1
Lincoln Park HS	
Marshall HS	
Northwest MS	2
Chopin ES	
Clemente HS	
De Diego ES	
Jenner ES	
Lewis ES	
Morton ES	
Ryerson ES	3
Beidler ES	
W. Brown ES	
Collier ES	
Chalmers ES	
Crane HS	
Faraday ES	
Herbert ES	
Jansen ES	
Juarez HS	
Orti ES	
Smyth ES	4
Delano ES	
Ellington ES	
Gregory ES	
Haffner ES	
May ES	
Tilton ES	5
Charles Hughes ES	
Johnson ES	
Lawndale ES	
Summer ES	6
Cordenas ES	
Castellanos ES	
Farragut HS	
Hammond ES	
Kennedy HS	
Telpochalli ES	7
Beethoven ES	
Bronzeville/DuSable HS	
Burke ES	
Mayo ES	
Mollison ES	
Pershing West MS	
Reavis ES	
Robinson ES	
Williams MS	8
Carter ES	
Dewey ES	
Harte ES	
Holmes ES	
Hope HS	
Ray ES	
Sexton ES	
Sherwood ES	9
Carnegie ES	
Dulles ES	
Dumas ES	
FermiES/South Shore FA	
Hyde Park HS	
O'Keefe ES	10
Banneker ES	
Bass ES	
Bond ES	
Goodlow ES	
Harvard ES	
Nicholson ES	
O'Toole ES	11
Altgeld ES	
Barton ES	
Fr. Dearborn ES	
Joplin ES	12
Gresham ES	
Ryder ES	13
Ashie ES	
Bowen HS	
Lawrence ES	
Barnard ES	
Cullen ES	
Langston Hughes ES	
Lavizzo ES	
Mt. Vernon ES	15
Rivers ES	
Carliss HS	
Curtis ES	
Haley ES	16
Aldridge ES	
Carver ES	
Esmond ES	
Gompers ES	17



SIP: School Investment Program

warm • dry • cool • secure • welcoming • inclusive • high-tech • purpose-built

Program Schedule & Scope:

PBC approved seventeen Design-Build Agreements for the SIP Program at 5/14/13 Board Meeting. 17 separate agreements to execute work at 98 schools.

Complete 8/12/13-Punchlist Ongoing

- Excess of 2,000 classrooms and labs (engineering, computer and media) received new or upgraded air conditioning (over 2,400 air conditioners)
- 54 Welcoming Schools received new wireless upgrades (over 1,600 wireless access points)
- Hundreds of classrooms, along with auxiliary spaces (gymnasiums, cafeterias, corridors, etc.) received painting and refinishing
- 33 schools received food service upgrades (including existing kitchen renovations, new serving lines, new equipment, etc.)
- New or upgraded electrical service provided on 8 schools.
- Electrical, mechanical, and plumbing system upgrades provided to make the facilities functional and support the renovations and new educational programs

Brennan ES	
Brentano ES	
Chappell ES	
McCullough & Branch ES	
McPherson ES	
Schurz HS	
Senn HS	
Stockton ES	
Taft HS	1
Lincoln Park HS	
Marshall HS	
Northwest MS	2
Chopin ES	
Clemente HS	
De Diego ES	
Jenner ES	
Lewis ES	
Morton ES	
Ryerson ES	3
Beidler ES	
W. Brown ES	
Collier ES	
Chalmers ES	
Crane HS	
Faraday ES	
Herbert ES	
Jensen ES	
Juarez HS	
Otis ES	
Smyth ES	4
Delano ES	
Ellington ES	
Gregory ES	
Haffner ES	
May ES	
Tilton ES	5
Charles Hughes ES	
Johnson ES	
Lawndale ES	
Summer ES	6
Cardenas ES	
Castellanos ES	
Farragut HS	
Hammond ES	
Kennedy HS	
Talpochalli ES	7
Beethoven ES	
Bronzeville/DuSable HS	
Burke ES	
Mayo ES	
Mollison ES	
Pershing West MS	
Reavis ES	
Robinson ES	
Williams MS	8
Carter ES	
Dewey ES	
Harte ES	
Holmes ES	
Hope HS	
Roy ES	
Sexton ES	9
Sherwood ES	
Carnegie ES	
Dulles ES	
Dumas ES	
FermiES/South Shore FA	
Hyde Park HS	
O'Keefe ES	10
Banneker ES	
Bass ES	
Bond ES	
Goodlow ES	
Harvard ES	
Nicholson ES	
O'Toole ES	11
Altgeld ES	
Barton ES	
Fr. Dearborn ES	12
Joplin ES	
Gresham ES	13
Ryder ES	
Ashie ES	
Bowen HS	
Lawrence ES	14
Barnard ES	
Cullen ES	
Langston Hughes ES	
Lavizzo ES	
Mt. Vernon ES	15
Rivers ES	
Carliss HS	
Curtis ES	16
Haley ES	
Aldridge ES	
Carver ES	
Esmond ES	
Gompers ES	17



SIP: School Investment Program

warm • dry • cool • secure • welcoming • inclusive • high-tech • purpose-built

Program Schedule & Scope (Continued):

- 23 new International Baccalaureate Science Labs
- Over 40 schools received new or renovated computer labs totaling over 1,000 new computers installed
- 18 new or renovated science labs constructed
- 13 new or renovated art classrooms constructed
- 10 schools received a new or renovated engineering lab
- 10 new or renovated media labs constructed
- 11 schools received a new or renovated library
- Envelope (masonry, restoration and windows) and roof repairs at over 60 schools
- Site improvements at over 20 schools
- New or renovated lockers at over 15 schools
- By year end, 13 schools will receive 11 new elevators and 14 new accessible lifts

- Brennen ES
- Brentano ES
- Chappell ES
- McCulghoon & Branch ES
- McPherson ES
- Schurz HS
- Senn HS
- Stockton ES
- Taft HS
- 1
- Lincoln Park HS
- Marshall HS
- Northwest MS
- 2
- Chopin ES
- Clemente HS
- De Diego ES
- Janner ES
- Lewis ES
- Morton ES
- Ryerson ES
- 3
- Beidler ES
- W. Brown ES
- Collier ES
- Chalmers ES
- Crane HS
- Faraday ES
- Herbert ES
- Jansen ES
- Juarez HS
- Otis ES
- Smyth ES
- 4
- Delano ES
- Ellington ES
- Gregory ES
- Haffner ES
- May ES
- Tilton ES
- 5
- Charles Hughes ES
- Johnson ES
- Lawndale ES
- 6
- Sumner ES
- Cardenas ES
- Castellanos ES
- Farragut HS
- Hammond ES
- Kennedy HS
- Talpochalli ES
- 7
- Beethoven ES
- Bronzeville/DuSable HS
- Burke ES
- Mayo ES
- Mollison ES
- Pershing West MS
- Reavis ES
- Robinson ES
- Williams MS
- 8
- Carter ES
- Dewey ES
- Harte ES
- Holmes ES
- Hope HS
- Ray ES
- Sexton ES
- 9
- Sherwood ES
- Carnegie ES
- Dulles ES
- Dumas ES
- FermiES/South Shore FA
- Hyde Park HS
- O'Keefe ES
- 10
- Banneker ES
- Bass ES
- Bond ES
- Goodlow ES
- Harvard ES
- Nicholson ES
- O'Toole ES
- 11
- Altgeld ES
- Barton ES
- Fi. Dearborn ES
- Joplin ES
- 12
- Gresham ES
- Ryder ES
- 13
- Ashe ES
- 14
- Bowen HS
- Lawrence ES
- Barnard ES
- Cullen ES
- Langston Hughes ES
- Lavizzo ES
- 15
- Mt. Vernon ES
- Revere ES
- Carliss HS
- Curtis ES
- 16
- Haley ES
- 17
- Aldridge ES
- Carver ES
- Esmond ES
- Gompers ES



SIP: School Investment Program

warm • dry • cool • secure • welcoming • inclusive • high-tech • purpose-built



Nicholson:
Before

Excess of 2,000 classrooms and labs (engineering, computer and media) received new or upgraded air conditioning (over 2,400 air conditioners)



Nicholson:
After

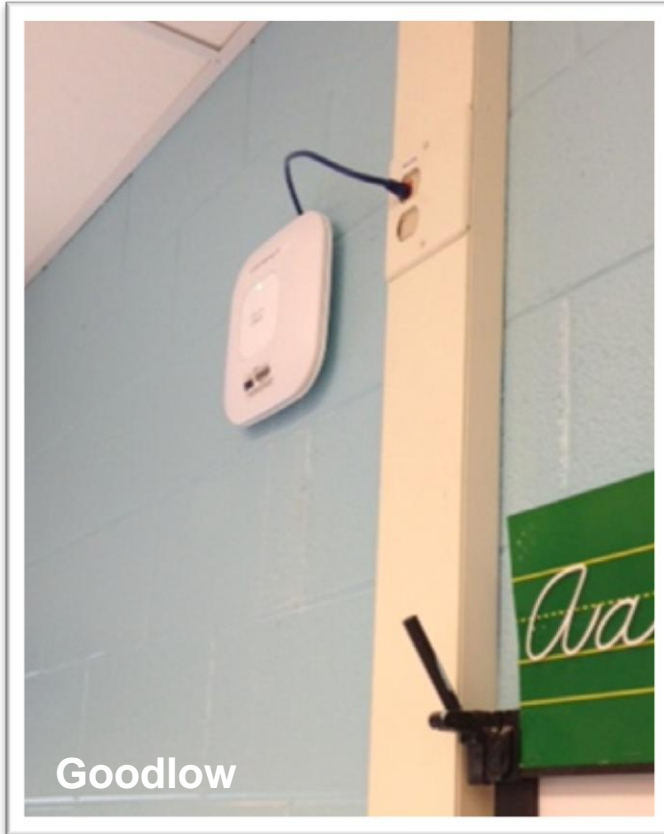
Air conditioning

- Brennan ES
- Brentano ES
- Chappell ES
- McCulhoun & Branch ES
- McPherson ES
- Schurz HS
- Senn HS
- Stockton ES
- Taft HS
- 1
- Lincoln Park HS
- Marshall MS
- Northwest MS
- 2
- Chopin ES
- Clamente HS
- De Diego ES
- Janner ES
- Lewis ES
- Morton ES
- Ryerson ES
- 3
- Beidler ES
- W. Brown ES
- Collier ES
- Chalmers ES
- Crane HS
- Faraday ES
- Herbert ES
- Jensen ES
- Juarez HS
- Otis ES
- Smyth ES
- 4
- Delano ES
- Ellington ES
- Gregory ES
- Haffner ES
- May ES
- Tilton ES
- 5
- Charles Hughes ES
- Johnson ES
- Lawndale ES
- 6
- Sumner ES
- Cardenas ES
- Castellanos ES
- Farragut HS
- Hammond ES
- Kennedy HS
- 7
- Talpochalli ES
- Beethoven ES
- Bronzeville/DuSable HS
- Burke ES
- Mayo ES
- Mollison ES
- Pershing West MS
- 8
- Reavis ES
- Robinson ES
- Williams MS
- Carter ES
- Dewey ES
- Harte ES
- Holmes ES
- Hope HS
- Ray ES
- Sexton ES
- 9
- Sherwood ES
- Carnegie ES
- Dulles ES
- Dumas ES
- FermiES/South Shore FA
- Hyde Park HS
- 10
- O'Keeffe ES
- Banneker ES
- Bass ES
- Bond ES
- Goodlow ES
- Harvard ES
- Nicholson ES
- 11
- O'Toole ES
- Altgeld ES
- Barton ES
- Fr. Dearborn ES
- 12
- Joplin ES
- Gresham ES
- 13
- Ryder ES
- Ashie ES
- 14
- Bowen HS
- Lawrence ES
- Barnard ES
- Cullen ES
- Langston Hughes ES
- Lavizzo ES
- Mt. Vernon ES
- 15
- Rivers ES
- Carliss HS
- Curtis ES
- 16
- Haley ES
- Aldridge ES
- Carver ES
- Esmond ES
- Gompers ES
- 17



SIP: School Investment Program

warm • dry • cool • secure • welcoming • inclusive • high-tech • purpose-built



Goodlow



Tilton



McPherson

Data ports

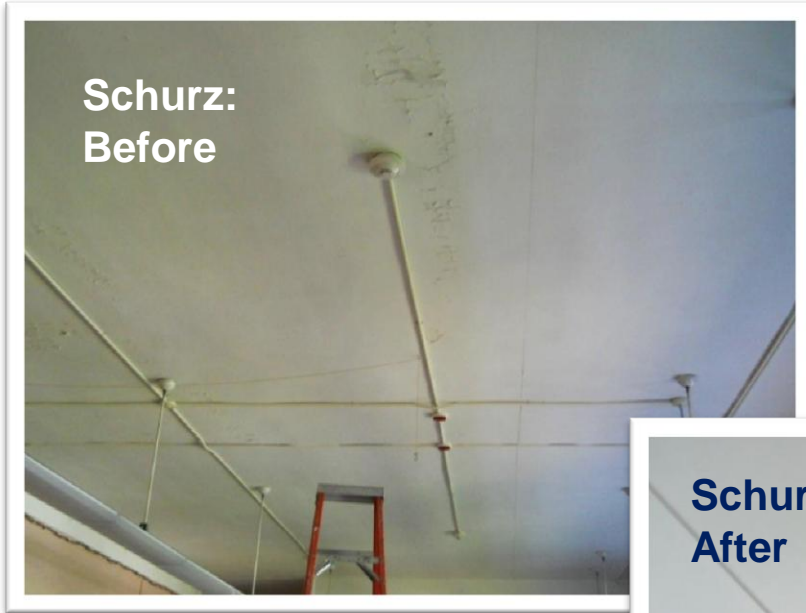
54 Welcoming Schools received new wireless upgrades (over 1,600 wireless access points)

- Brennen ES
- Brentano ES
- Chappell ES
- McCuthern & Branch ES
- McPherson ES
- Schurz HS
- Senn HS
- Stockton ES
- Taff HS
- 1
- Lincoln Park HS
- Marshall HS
- Northwest MS
- 2
- Chopin ES
- Clemente HS
- De Diego ES
- Jenner ES
- Lewis ES
- Morton ES
- Ryerson ES
- 3
- Beidler ES
- W. Brown ES
- Collier ES
- Chalmers ES
- Crane HS
- Faraday ES
- Herbert ES
- Jensen ES
- Juarez HS
- Otis ES
- Smyth ES
- 4
- Delano ES
- Ellington ES
- Gregory ES
- Haffner ES
- May ES
- Tilton ES
- 5
- Charles Hughes ES
- Johnson ES
- Lawndale ES
- 6
- Summer ES
- Cardenas ES
- Castellanos ES
- Farragut HS
- Hammond ES
- Kennedy HS
- 7
- Talpochalli ES
- Beethoven ES
- Bronzeville/DuSable HS
- Burke ES
- Mayo ES
- Mollison ES
- Pershing West MS
- 8
- Reavis ES
- Robinson ES
- Williams MS
- Carter ES
- Dewey ES
- Harte ES
- Holmes ES
- Hope HS
- Ray ES
- Sexton ES
- 9
- Sherwood ES
- Carnegie ES
- Dulles ES
- Dumas ES
- FermiES/South Shore FA
- Hyde Park HS
- 10
- O'Keefe ES
- Banneker ES
- Bass ES
- Bond ES
- Goodlow ES
- Harvard ES
- Nicholson ES
- O'Toole ES
- 11
- Altgeld ES
- Barton ES
- Fr. Dearborn ES
- 12
- Joplin ES
- Gresham ES
- 13
- Ryder ES
- Ashe ES
- 14
- Bowen HS
- Lawrence ES
- Barnard ES
- Cullen ES
- Langston Hughes ES
- Lavizzo ES
- 15
- Mt. Vernon ES
- Revere ES
- 16
- Carliss HS
- Curtis ES
- Haley ES
- 17
- Aldridge ES
- Carver ES
- Esmond ES
- Gompers ES



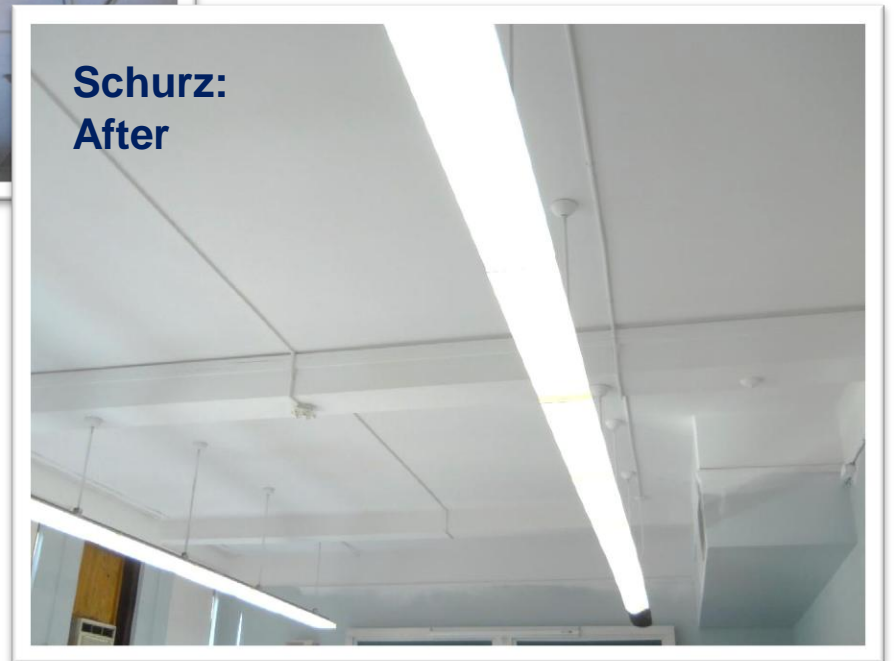
SIP: School Investment Program

warm • dry • cool • secure • welcoming • inclusive • high-tech • purpose-built



Schurz:
Before

Painting



Schurz:
After

Hundreds of classrooms, along with auxiliary spaces (gymnasiums, cafeterias, corridors, etc.) received painting and refinishing

Brennan ES	
Brentano ES	
Chappell ES	
McCulghoon & Branch ES	
McPherson ES	
Schurz HS	
Senn HS	
Stockton ES	
Taft HS	1
Lincoln Park HS	
Marshall MS	
Northwest MS	2
Chopin ES	
Clamente HS	
De Diego ES	
Jenner ES	
Lewis ES	
Morton ES	
Ryerson ES	3
Beidler ES	
W. Brown ES	
Collier ES	
Chalmers ES	
Crane HS	
Faraday ES	
Herbert ES	
Jensen ES	
Juarez HS	
Ohio ES	
Smyth ES	4
Delano ES	
Ellington ES	
Gregory ES	
Haffner ES	
May ES	
Tilton ES	5
Charles Hughes ES	
Johnson ES	
Lawndale ES	
Summer ES	6
Córdova ES	
Castellanos ES	
Farragut HS	
Hammond ES	
Kennedy HS	
Telpochalli ES	7
Beethoven ES	
Bronzeville/DuSable HS	
Burke ES	
Mayo ES	
Mollison ES	
Pershing West MS	
Reavis ES	
Robinson ES	
Williams MS	8
Carter ES	
Dewey ES	
Harte ES	
Holmes ES	
Hope HS	
Ray ES	
Sexton ES	9
Sherwood ES	
Carnegie ES	
Dulles ES	
Dumas ES	
FermiES/South Shore FA	
Hyde Park HS	
O'Keefe ES	10
Banneker ES	
Bass ES	
Bond ES	
Goodlow ES	
Harvard ES	
Nicholson ES	
O'Toole ES	11
Altgeld ES	
Barlow ES	
Fr. Dearborn ES	
Joplin ES	12
Gresham ES	
Ryder ES	13
Ashe ES	
Bowen HS	
Lawrence ES	
Barnard ES	
Cullen ES	
Langston Hughes ES	
Lavizzo ES	
Mt. Vernon ES	
Revere ES	15
Carliss HS	
Curtis ES	
Haley ES	16
Aldridge ES	
Carver ES	
Esmond ES	
Gompers ES	17

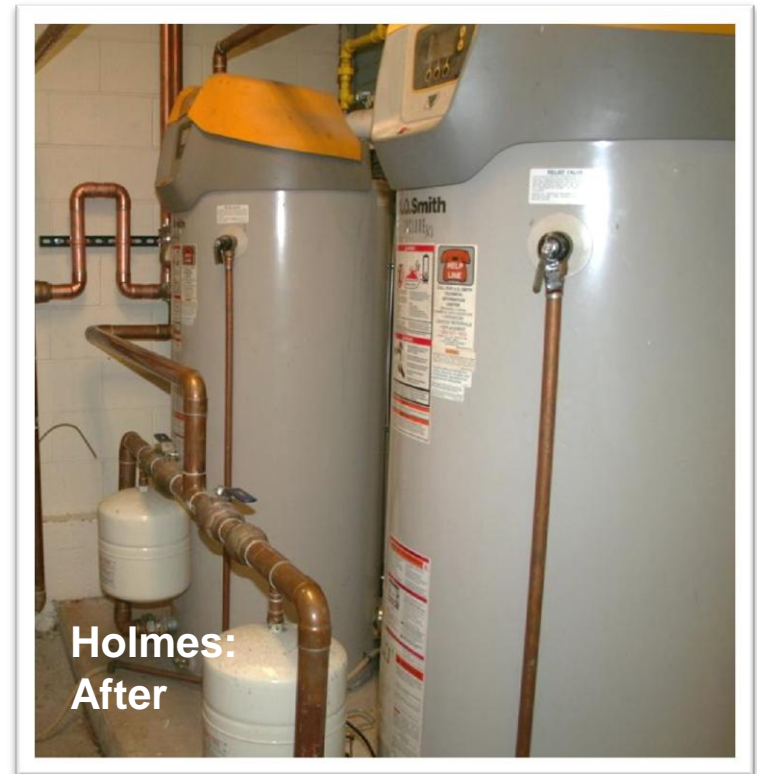
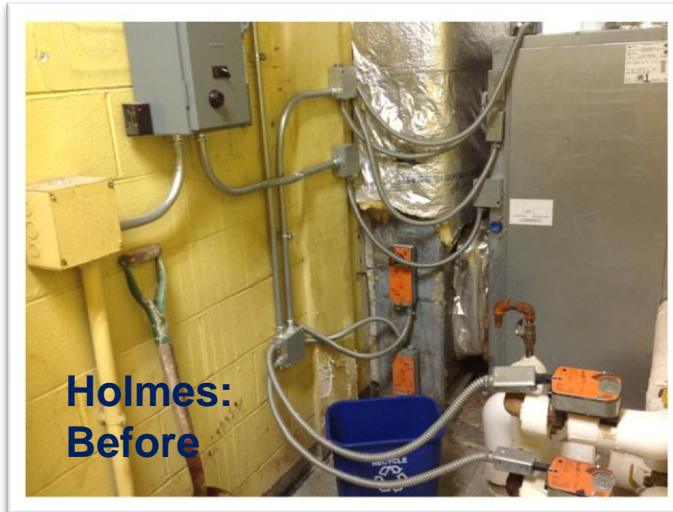


SIP: School Investment Program

warm • dry • cool • secure • welcoming • inclusive • high-tech • purpose-built

Electrical, mechanical, and plumbing system upgrades provided to make the facilities functional and support the renovations and new educational programs

Electrical, Mechanical & Plumbing



- Brennan ES
- Brentano ES
- Chappell ES
- McCuthbert & Branch ES
- McPherson ES
- Schurz HS
- Senn HS
- Stockton ES
- Taft HS
- 1
- Lincoln Park HS
- Marshall HS
- Northwest MS
- 2
- Chopin ES
- Clemente HS
- De Diego ES
- Janner ES
- Lewis ES
- Morton ES
- Ryerson ES
- 3
- Beidler ES
- W. Brown ES
- Collier ES
- Chalmers ES
- Crane HS
- Faraday ES
- Herbert ES
- Jensen ES
- Juarez HS
- Otis ES
- Smyth ES
- 4
- Delano ES
- Ellington ES
- Gregory ES
- Haffner ES
- May ES
- 5
- Tilton ES
- Charles Hughes ES
- Johnson ES
- Lawndale ES
- 6
- Sumner ES
- Cardenas ES
- Castellanos ES
- Farragut HS
- Hammond ES
- 7
- Kennedy HS
- Talpochalli ES
- Beethoven ES
- Bronzeville/DuSable HS
- Burke ES
- Mayo ES
- Mollison ES
- Pershing West MS
- Reavis ES
- Robinson ES
- Williams MS
- 8
- Carter ES
- Dewey ES
- Harte ES
- Holmes ES
- Hope HS
- Ray ES
- Sexton ES
- 9
- Sherwood ES
- Carnegie ES
- Dulles ES
- Dumas ES
- FermiES/South Shore FA
- Hyde Park HS
- 10
- O'Keefe ES
- Banneker ES
- Bass ES
- Bond ES
- Goodlow ES
- Harvard ES
- Nicholson ES
- O'Toole ES
- 11
- Altgeld ES
- Barton ES
- Fr. Dearborn ES
- 12
- Joplin ES
- Gresham ES
- 13
- Ryder ES
- Ashe ES
- 14
- Bowen HS
- Lawrence ES
- Barnard ES
- Cullen ES
- Langston Hughes ES
- Lavizzo ES
- 15
- Mt. Vernon ES
- Rivers ES
- Carliss HS
- Curtis ES
- 16
- Haley ES
- Aldridge ES
- 17
- Carver ES
- Esmond ES
- Gompers ES

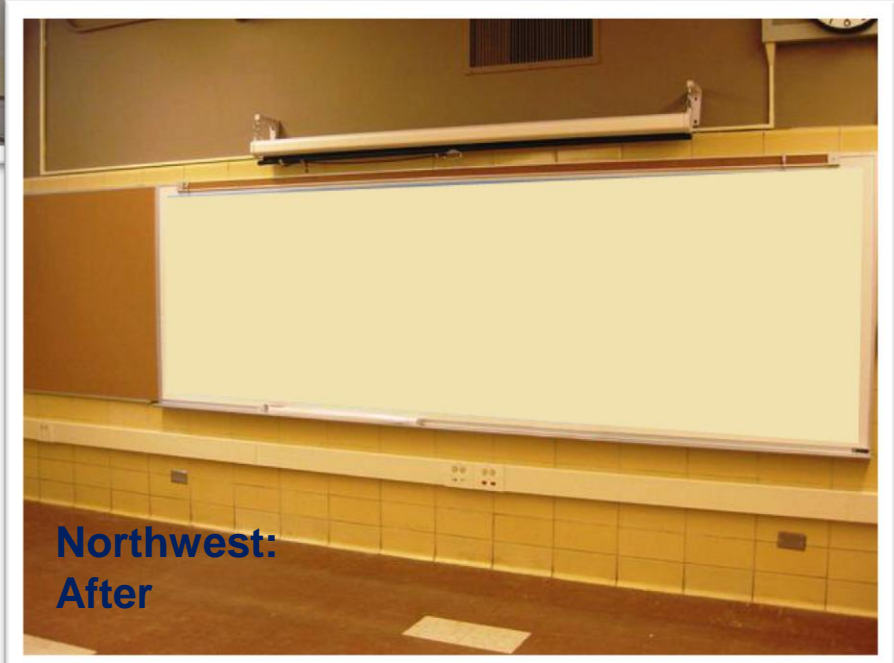


SIP: School Investment Program

warm • dry • cool • secure • welcoming • inclusive • high-tech • purpose-built



Northwest:
Before



Northwest:
After

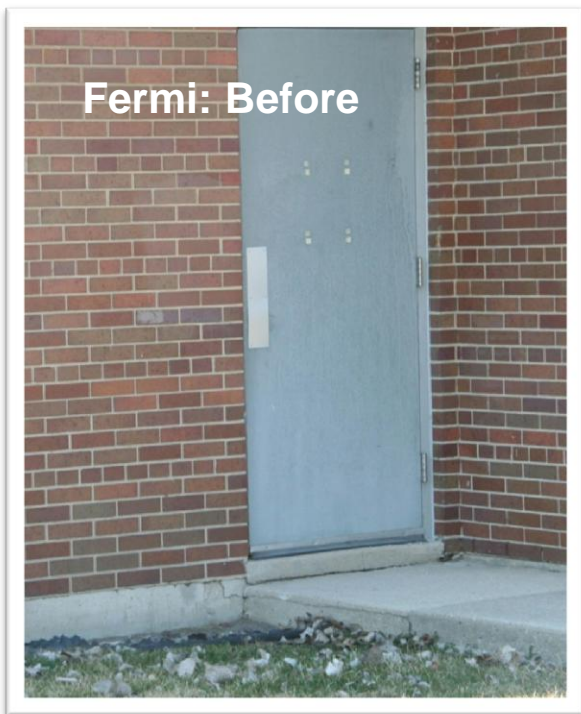
Marker Boards

Brennen ES	
Brentano ES	
Chappell ES	
McCulghoon & Branch ES	
McPherson ES	
Schurz HS	
Senn HS	
Stockton ES	
Taft HS	1
Lincoln Park HS	
Marshall MS	
Northwest MS	2
Chopin ES	
Clemente HS	
De Diego ES	
Jenner ES	
Lewis ES	
Morton ES	
Ryerson ES	3
Beidler ES	
W. Brown ES	
Collier ES	
Chalmers ES	
Crane HS	
Faraday ES	
Herbert ES	
Jensen ES	
Juarez HS	
Otis ES	
Smyth ES	4
Delano ES	
Ellington ES	
Gregory ES	
Haffner ES	
May ES	
Tilton ES	5
Charles Hughes ES	
Johnson ES	
Lawndale ES	
Summer ES	6
Cardenas ES	
Castellanos ES	
Farragut HS	
Hammond ES	
Kennedy HS	
Talpochalli ES	7
Beethoven ES	
Bronzeville/DuSable HS	
Burke ES	
Mayo ES	
Mollison ES	
Pershing West MS	
Reavis ES	
Robinson ES	
Williams MS	8
Carter ES	
Dewey ES	
Harte ES	
Holmes ES	
Hope HS	
Ray ES	
Sexton ES	
Sherwood ES	9
Carnegie ES	
Dulles ES	
Dumas ES	
FermiES/South Shore FA	
Hyde Park HS	
O'Keefe HS	10
Banneker ES	
Bass ES	
Bond ES	
Goodlow ES	
Harvard ES	
Nicholson ES	
O'Toole ES	11
Altgeld ES	
Barton ES	
Fr. Dearborn ES	
Joplin ES	12
Gresham ES	
Ryder ES	13
Ashe ES	
Bowen HS	
Lawrence ES	
Barnard ES	
Cullen ES	
Langston Hughes ES	
Lavizzo ES	
Mt. Vernon ES	15
Reverse ES	
Carliss HS	
Curtis ES	
Haley ES	16
Aldridge ES	
Carver ES	
Esmond ES	
Gompers ES	17



SIP: School Investment Program

warm • dry • cool • secure • welcoming • inclusive • high-tech • purpose-built



Security Doors

- Brennon ES
- Brentano ES
- Chappell ES
- McCulghoon & Branch ES
- McPherson ES
- Schurz HS
- Senn HS
- Stockton ES
- Taft HS
- 1
- Lincoln Park HS
- Marshall MS
- Northwest MS
- 2
- Chopin ES
- Clamente HS
- De Diego ES
- Jenner ES
- Lewis ES
- Morton ES
- Ryerson ES
- 3
- Beidler ES
- W. Brown ES
- Colther ES
- Chalmers ES
- Crane HS
- Faraday ES
- Herbert ES
- Jensen ES
- Juarez HS
- Ohl ES
- Smyth ES
- 4
- Delano ES
- Ellington ES
- Gregory ES
- Hefferan ES
- May ES
- Tilton ES
- 5
- Charles Hughes ES
- Johnson ES
- Lawndale ES
- Summer ES
- 6
- Cardenas ES
- Castellanos ES
- Farragut HS
- Hammond ES
- Kennedy HS
- Talpochalli ES
- 7
- Beethoven ES
- Bronzeville/DuSable HS
- Burke ES
- Mayo ES
- Mollison ES
- Pershing West MS
- Reavis ES
- Robinson ES
- Williams MS
- 8
- Carter ES
- Dewey ES
- Harte ES
- Holmes ES
- Hope HS
- Ray ES
- Sexton ES
- 9
- Sherwood ES
- Carnegie ES
- Dulles ES
- Dumas ES
- FermiES/South Shore FA
- Hyde Park HS
- O'Keefe ES
- 10
- Banneker ES
- Bass ES
- Bond ES
- Goodlow ES
- Harvard ES
- Nicholson ES
- O'Toole ES
- 11
- Altgeld ES
- Barton ES
- Fr. Dearborn ES
- Joplin ES
- 12
- Gresham ES
- Ryder ES
- 13
- Ashe ES
- 14
- Bowen HS
- Lawrence ES
- Barnard ES
- Cullen ES
- Langston Hughes ES
- Lavizzo ES
- 15
- Mt. Vernon ES
- Revere ES
- 16
- Carliss HS
- Curtis ES
- Haley ES
- 17
- Aldridge ES
- Carver ES
- Esmond ES
- Gompers ES



SIP: School Investment Program

warm • dry • cool • secure • welcoming • inclusive • high-tech • purpose-built



Mayo:
Before

Painting and
Refinishing



Mayo:
After

Hundreds of classrooms, along with auxiliary spaces (gymnasiums, cafeterias, corridors, etc.) received painting and refinishing

- Brennan ES
- Brentano ES
- Chappell ES
- McCulghoon & Branch ES
- McPherson ES
- Schurz HS
- Senn HS
- Stockton ES
- Taft HS
- 1
- Lincoln Park HS
- Marshall MS
- Northwest MS
- 2
- Chopin ES
- Clamente HS
- De Diego ES
- Jenner ES
- Lewis ES
- Morton ES
- Ryerson ES
- 3
- Beidler ES
- W. Brown ES
- Cothran ES
- Chalmers ES
- Crane HS
- Faraday ES
- Herbert ES
- Jensen ES
- Juarez HS
- Ohls ES
- Smyth ES
- 4
- Delano ES
- Ellington ES
- Gregory ES
- Haffner ES
- May ES
- Tilton ES
- 5
- Charles Hughes ES
- Johnson ES
- Lawndale ES
- 6
- Sumner ES
- Cardenas ES
- Castellanos ES
- Farragut HS
- Hammond ES
- 7
- Kennedy HS
- Talpochalli ES
- Beethoven ES
- Bronzeville/DuSable HS
- Burke ES
- Mayo ES
- Mollison ES
- Pershing West MS
- Reavis ES
- Robinson ES
- Williams MS
- 8
- Carter ES
- Dewey ES
- Harte ES
- Holmes ES
- Hope HS
- Ray ES
- Sexton ES
- 9
- Sherwood ES
- Carnegie ES
- Dulles ES
- Dumas ES
- FermiES/South Shore FA
- Hyde Park HS
- O'Keeffe ES
- 10
- Banneker ES
- Bass ES
- Bond ES
- Goodlow ES
- Harvard ES
- Nicholson ES
- O'Toole ES
- 11
- Altgeld ES
- Barton ES
- Fr. Dearborn ES
- Joplin ES
- 12
- Gresham ES
- Ryder ES
- 13
- Ashe ES
- 14
- Bowen HS
- Lawrence ES
- Barnard ES
- Cullen ES
- Langston Hughes ES
- Lavizzo ES
- 15
- Mt. Vernon ES
- 16
- Revere ES
- Carliss HS
- Curtis ES
- Haley ES
- 17
- Aldridge ES
- Carver ES
- Esmond ES
- Gompers ES



SIP: School Investment Program

warm • dry • cool • secure • welcoming • inclusive • high-tech • purpose-built



Marshall:
Before



Marshall:
After

Science Labs

18 new or renovated
science labs constructed

- Brennen ES
- Brentano ES
- Chappell ES
- McCullough & Branch ES
- McPherson ES
- Schurz HS
- Senn HS
- Stockton ES
- Taft HS
- 1
- Lincoln Park HS
- Marshall HS
- Northwest MS
- 2
- Chopin ES
- Clemente HS
- De Diego ES
- Janner ES
- Lewis ES
- Morton ES
- Ryerson ES
- 3
- Beidler ES
- W. Brown ES
- Collier ES
- Chalmers ES
- Crane HS
- Faraday ES
- Herbert ES
- Jensen ES
- Juarez HS
- Otis ES
- Smyth ES
- 4
- Delano ES
- Ellington ES
- Gregory ES
- Haffner ES
- May ES
- Tilton ES
- 5
- Charles Hughes ES
- Johnson ES
- Lawndale ES
- 6
- Summer ES
- Cardenas ES
- Castellanos ES
- Farragut HS
- Hammond ES
- Kennedy HS
- Talpochalli ES
- 7
- Beethoven ES
- Bronzeville/DuSable HS
- Burke ES
- Mayo ES
- Mollison ES
- Pershing West MS
- Reavis ES
- Robinson ES
- Williams MS
- 8
- Carter ES
- Dewey ES
- Harte ES
- Holmes ES
- Hope HS
- Ray ES
- Sexton ES
- 9
- Sherwood ES
- Carnegie ES
- Dulles ES
- Dumas ES
- FermiES/South Shore FA
- Hyde Park HS
- O'Keeffe ES
- 10
- Banneker ES
- Bass ES
- Bond ES
- Goodlow ES
- Harvard ES
- Nicholson ES
- O'Toole ES
- 11
- Altgeld ES
- Barton ES
- Fr. Dearborn ES
- Joplin ES
- 12
- Gresham ES
- Ryder ES
- 13
- Ashe ES
- 14
- Bowen HS
- Lawrence ES
- Barnard ES
- Cullen ES
- Langston Hughes ES
- Lavizzo ES
- 15
- Mt. Vernon ES
- 16
- 17
- Revere ES
- Carliss HS
- Curtis ES
- Haley ES
- Aldridge ES
- Carver ES
- Esmond ES
- Gompers ES



SIP: School Investment Program

warm • dry • cool • secure • welcoming • inclusive • high-tech • purpose-built



Hyde Park:
Before



Hyde Park:
After

Computer Labs

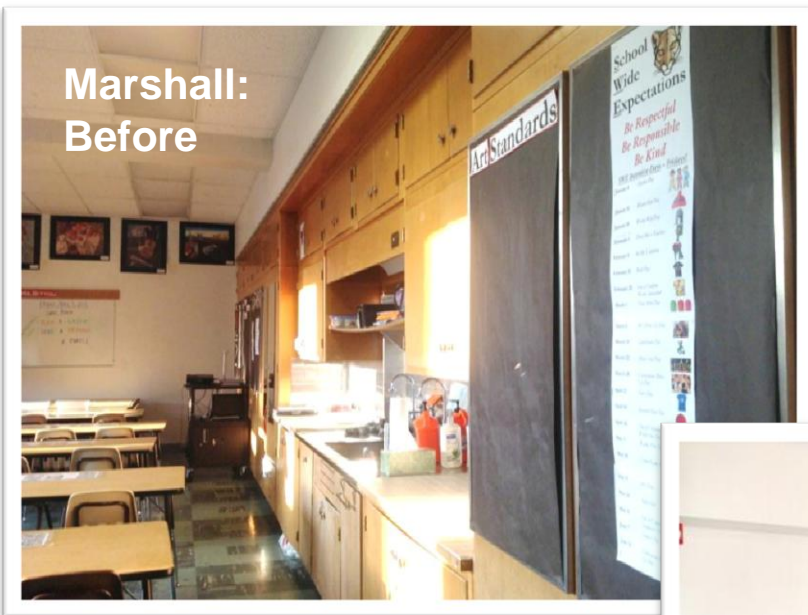
Over 40 schools received new or renovated computer labs totaling over 1,000 new computers installed

- Brennem ES
- Brentano ES
- Chappell ES
- McCulghoon & Branch ES
- McPherson ES
- Schurz HS
- Senn HS
- Stockton ES
- Taft HS
- 1
- Lincoln Park HS
- Marshall MS
- Northwest MS
- 2
- Chopin ES
- Clemente HS
- De Diego ES
- Janner ES
- Lewis ES
- Morton ES
- Ryerson ES
- 3
- Beidler ES
- W. Brown ES
- Colther ES
- Chalmers ES
- Crane HS
- Faraday ES
- Herbert ES
- Jansen ES
- Juarez HS
- Onis ES
- Smyth ES
- 4
- Delano ES
- Ellington ES
- Gregory ES
- Haffner ES
- May ES
- Tilton ES
- 5
- Charles Hughes ES
- Johnson ES
- Lawndale ES
- 6
- Summer ES
- Cardenas ES
- Castellanos ES
- Farragut HS
- Hammond ES
- Kennedy HS
- Talpochalli ES
- 7
- Beethoven ES
- Bronzeville/DuSable HS
- Burke ES
- Mayo ES
- Mollison ES
- Pershing West MS
- Reavis ES
- Robinson ES
- Williams MS
- 8
- Carter ES
- Dewey ES
- Harte ES
- Holmes ES
- Hope HS
- Ray ES
- Sexton ES
- 9
- Sherwood ES
- Carnegie ES
- Dulles ES
- Dumas ES
- FermiES/South Shore FA
- Hyde Park HS
- 10
- O'Keefe ES
- Banneker ES
- Bass ES
- Bond ES
- Goodlow ES
- Harvard ES
- Nicholson ES
- O'Toole ES
- 11
- Altgeld ES
- Barton ES
- 12
- 13
- 14
- 15
- 16
- 17



SIP: School Investment Program

warm • dry • cool • secure • welcoming • inclusive • high-tech • purpose-built



13 new or renovated art classrooms constructed



Art Classrooms

Marshall:
After

- Brennan ES
- Brentano ES
- Chappell ES
- McCulghoon & Branch ES
- McPherson ES
- Schurz HS
- Senn HS
- Stockton ES
- Taft HS
- 1
- Lincoln Park HS
- Marshall HS
- Northwest MS
- 2
- Chopin ES
- Clamente HS
- De Diego ES
- Janner ES
- Lewis ES
- Morton ES
- Ryerson ES
- 3
- Beidler ES
- W. Brown ES
- Collier ES
- Chalmers ES
- Crane HS
- Faraday ES
- Herbert ES
- Jensen ES
- Juarez HS
- Ohl ES
- Smyth ES
- 4
- Delano ES
- Ellington ES
- Gregory ES
- Hefferan ES
- May ES
- Tilton ES
- 5
- Charles Hughes ES
- Johnson ES
- Lawndale ES
- 6
- Sumner ES
- Cardenas ES
- Castellanos ES
- Farragut HS
- Hammond ES
- Kennedy HS
- Talpochalli ES
- 7
- Beethoven ES
- Bronzeville/DuSable HS
- Burke ES
- Mayo ES
- Mollison ES
- Pershing West MS
- Reavis ES
- Robinson ES
- Williams MS
- 8
- Carter ES
- Dewey ES
- Harte ES
- Holmes ES
- Hope HS
- Ray ES
- Sexton ES
- 9
- Sherwood ES
- Carnegie ES
- Dulles ES
- Dumas ES
- FermiES/South Shore FA
- Hyde Park HS
- O'Keefe ES
- 10
- Banneker ES
- Bass ES
- Bond ES
- Goodlow ES
- Harvard ES
- Nicholson ES
- O'Toole ES
- 11
- Altgeld ES
- Barton ES
- Fi. Dearborn ES
- Joplin ES
- 12
- Gresham ES
- Ryder ES
- 13
- Ashie ES
- 14
- Bowen HS
- Lawrence ES
- Barnard ES
- Cullen ES
- Langston Hughes ES
- Lavizzo ES
- 15
- Mt. Vernon ES
- Rivers ES
- Carliss HS
- Curtis ES
- 16
- Haley ES
- 17
- Aldridge ES
- Carver ES
- Esmond ES
- Gompers ES



SIP: School Investment Program

warm • dry • cool • secure • welcoming • inclusive • high-tech • purpose-built



Hefferan:
Before

Engineering Labs



Hefferan:
After

10 schools received a new or renovated engineering lab

- Brennen ES
- Brentano ES
- Chappell ES
- McCuthbertson & Branch ES
- McPherson ES
- Schurz HS
- Senn HS
- Stockton ES
- Taft HS
- 1
- Lincoln Park HS
- Marshall MS
- Northwest MS
- 2
- Chopin ES
- Clemente HS
- De Diego ES
- Jenner ES
- Lewis ES
- Morton ES
- Ryerson ES
- 3
- Beidler ES
- W. Brown ES
- Collier ES
- Chalmers ES
- Crane HS
- Faraday ES
- Herbert ES
- Jensen ES
- Juarez HS
- Otis ES
- Smyth ES
- 4
- Delano ES
- Ellington ES
- Gregory ES
- Haffner ES
- May ES
- Tilton ES
- 5
- Charles Hughes ES
- Johnson ES
- Lawndale ES
- 6
- Sumner ES
- Cardenas ES
- Castellanos ES
- Farragut HS
- Hammond ES
- Kennedy HS
- Talpochalli ES
- 7
- Beethoven ES
- Bronzeville/DuSable HS
- Burke ES
- Mayo ES
- Mollison ES
- Pershing West MS
- Reavis ES
- Robinson ES
- Williams MS
- 8
- Carter ES
- Dewey ES
- Harte ES
- Holmes ES
- Hope HS
- Ray ES
- Sexton ES
- 9
- Sherwood ES
- Carnegie ES
- Dulles ES
- Dumas ES
- FermiES/South Shore FA
- Hyde Park HS
- O'Keefe ES
- 10
- Banneker ES
- Bass ES
- Bond ES
- Goodlow ES
- Harvard ES
- Nicholson ES
- O'Toole ES
- 11
- Altgeld ES
- Barton ES
- Fr. Dearborn ES
- 12
- Joplin ES
- Gresham ES
- Ryder ES
- 13
- Ashe ES
- 14
- Bowen HS
- Lawrence ES
- Barnard ES
- Cullen ES
- Langston Hughes ES
- Lavizzo ES
- Mt. Vernon ES
- 15
- Renaissance ES
- Carliss HS
- Curtis ES
- 16
- Haley ES
- 17
- Aldridge ES
- Carver ES
- Esmond ES
- Gompers ES



SIP: School Investment Program

warm • dry • cool • secure • welcoming • inclusive • high-tech • purpose-built



**Tilton:
Before**



**Tilton:
After**

Media Labs

10 new or renovated media labs constructed

- Brennen ES
- Brentano ES
- Chappell ES
- McCulghoon & Branch ES
- McPherson ES
- Schurz HS
- Senn HS
- Stockton ES
- Taft HS
- 1**
- Lincoln Park HS
- Marshall MS
- Northwest MS
- Chopin ES
- Clemente HS
- De Diego ES
- Janner ES
- Lewis ES
- Morton ES
- Ryerson ES
- 3**
- Beidler ES
- W. Brown ES
- Cothran ES
- Chalmers ES
- Crane HS
- Faraday ES
- Herbert ES
- Jansen ES
- Juarez HS
- Otis ES
- Smyth ES
- Delano ES
- Ellington ES
- Gregory ES
- Haffner ES
- May ES
- Tilton ES
- Charles Hughes ES
- Johnson ES
- Lawndale ES
- Sumner ES
- 6**
- Cardenas ES
- Castellanos ES
- Farragut HS
- Hammond ES
- Kennedy HS
- Talpochalli ES
- Beethoven ES
- Bronzeville/DuSable HS
- Burke ES
- Mayo ES
- Mollison ES
- Pershing West MS
- Reavis ES
- Robinson ES
- Williams MS
- 8**
- Carter ES
- Dewey ES
- Harte ES
- Holmes ES
- Hope HS
- Roy ES
- Sexton ES
- Sherwood ES
- 9**
- Carnegie ES
- Dulles ES
- Dumas ES
- FermiES/South Shore FA
- Hyde Park HS
- O'Keeffe ES
- 10**
- Banneker ES
- Bass ES
- Bond ES
- Goodlow ES
- Harvard ES
- Nicholson ES
- O'Toole ES
- 11**
- Altgeld ES
- Barton ES
- Fr. Dearborn ES
- Joplin ES
- Gresham ES
- Ryder ES
- Ashie ES
- 13**
- Bowen HS
- Lawrence ES
- Barnard ES
- Cullen ES
- Langston Hughes ES
- Lavizzo ES
- Mt. Vernon ES
- 15**
- Reverse ES
- Carliss HS
- Curtis ES
- Haley ES
- 16**
- Aldridge ES
- Carver ES
- Esmond ES
- Gompers ES
- 17**



SIP: School Investment Program

warm • dry • cool • secure • welcoming • inclusive • high-tech • purpose-built



**Hammond:
Before**

Envelope and
Roof Repairs



**Hammond:
After**

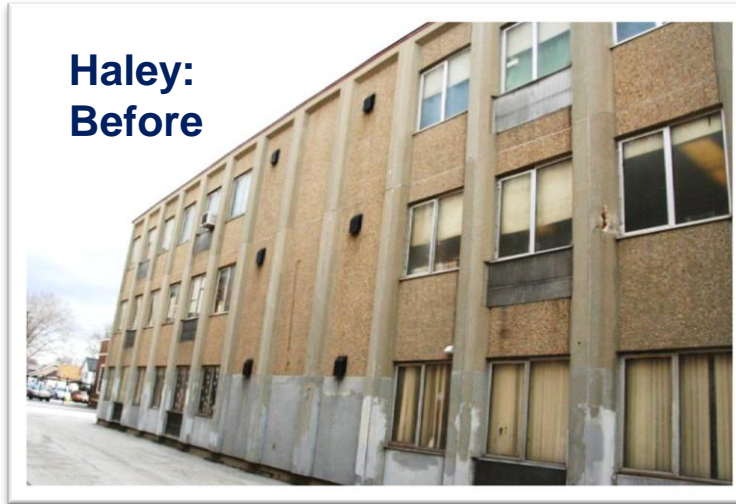
Envelope (masonry,
restoration and windows)
and roof repairs at over
60 schools

- Brenneman ES
- Brentano ES
- Chappell ES
- McCullough & Branch ES
- McPherson ES
- Schurz HS
- Senn HS
- Stockton ES
- Taft HS
- 1
- Lincoln Park HS
- Marshall MS
- Northwest MS
- 2
- Chopin ES
- Clemente HS
- De Diego ES
- Janner ES
- Lewis ES
- Morton ES
- Ryerson ES
- 3
- Beidler ES
- W. Brown ES
- Collier ES
- Chalmers ES
- Crane HS
- Faraday ES
- Herbert ES
- Jensen ES
- Juarez HS
- Otis ES
- Smyth ES
- 4
- Delano ES
- Ellington ES
- Gregory ES
- Halferan ES
- May ES
- 5
- Tilton ES
- Charles Hughes ES
- Johnson ES
- Lawndale ES
- 6
- Sumner ES
- Cardenas ES
- Castellanos ES
- Farragut HS
- Hammond ES
- Kennedy HS
- 7
- Talpochalli ES
- Beethoven ES
- Bronzeville/DuSable HS
- Burke ES
- Mayo ES
- Mollison ES
- Pershing West MS
- Reavis ES
- Robinson ES
- Williams MS
- 8
- Carter ES
- Dewey ES
- Harte ES
- Holmes ES
- Hope HS
- Ray ES
- Sexton ES
- 9
- Sherwood ES
- Carnegie ES
- Dulles ES
- Dumas ES
- FermiES/South Shore FA
- Hyde Park HS
- 10
- O'Keeffe ES
- Banneker ES
- Bass ES
- Bond ES
- Goodlow ES
- Harvard ES
- Nicholson ES
- O'Toole ES
- 11
- Altgeld ES
- Barton ES
- 12
- 13
- 14
- 15
- 16
- 17



SIP: School Investment Program

warm • dry • cool • secure • welcoming • inclusive • high-tech • purpose-built



**Haley:
Before**

Exterior Repairs
and New Windows



**Haley:
After**

- Brenneman ES
- Brentano ES
- Chappell ES
- McCuthern & Branch ES
- McPherson ES
- Schurz HS
- Senn HS
- Stockton ES
- Taft HS
- 1
- Lincoln Park HS
- Marshall MS
- Northwest MS
- 2
- Chopin ES
- Clemente HS
- De Diego ES
- Janner ES
- Lewis ES
- Morton ES
- Ryerson ES
- 3
- Beidler ES
- W. Brown ES
- Collier ES
- Chalmers ES
- Crane HS
- Faraday ES
- Herbert ES
- Jensen ES
- Juarez HS
- Otis ES
- Smyth ES
- 4
- Delano ES
- Ellington ES
- Gregory ES
- Haffner ES
- May ES
- Tilton ES
- 5
- Charles Hughes ES
- Johnson ES
- Lawndale ES
- 6
- Summer ES
- Cardenas ES
- Castellanos ES
- Farragut HS
- Hammond ES
- Kennedy HS
- Telpochalli ES
- 7
- Beethoven ES
- Bronzeville/DuSable HS
- Burke ES
- Mayo ES
- Mollison ES
- Pershing West MS
- Reavis ES
- Robinson ES
- Williams MS
- 8
- Carter ES
- Dewey ES
- Harte ES
- Holmes ES
- Hope HS
- Ray ES
- Sexton ES
- 9
- Sherwood ES
- Carnegie ES
- Dulles ES
- Dumas ES
- FermiES/South Shore FA
- Hyde Park HS
- O'Keefe ES
- 10
- Banneker ES
- Bass ES
- Bond ES
- Goodlow ES
- Harvard ES
- Nicholson ES
- O'Toole ES
- 11
- Altgeld ES
- Barton ES
- Fr. Dearborn ES
- 12
- Joplin ES
- Gresham ES
- 13
- Ryder ES
- Ashe ES
- 14
- Bowen HS
- Lawrence ES
- Barnard ES
- Cullen ES
- Langston Hughes ES
- Lavizzo ES
- 15
- Mt. Vernon ES
- Revere ES
- 16
- Carliss HS
- Curtis ES
- Haley ES
- 17
- Aldridge ES
- Carver ES
- Esmond ES
- Gompers ES

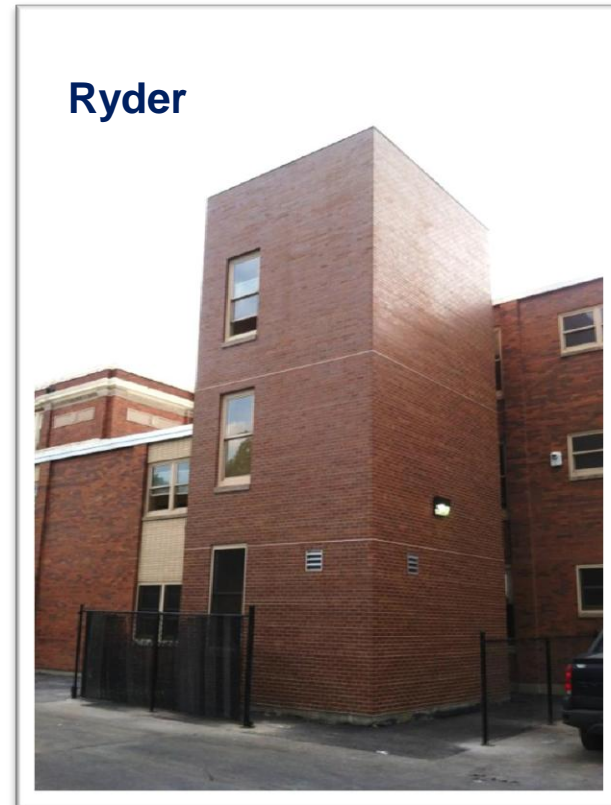


SIP: School Investment Program

warm • dry • cool • secure • welcoming • inclusive • high-tech • purpose-built



Elevators & Lifts



11 new elevators and
14 new accessible lifts

Brennemore ES	
Brentano ES	
Chappell ES	
McCullough & Branch ES	
McPherson ES	
Schurz HS	
Senn HS	
Stockton ES	
Taft HS	1
Lincoln Park HS	
Marshall HS	
Northwest MS	2
Chopin ES	
Clamente HS	
De Diego ES	
Jenner ES	
Lewis ES	
Morton ES	
Ryerson ES	3
Beidler ES	
W. Brown ES	
Colther ES	
Chalmers ES	
Crane HS	
Faraday ES	
Herbert ES	
Jensen ES	
Juarez HS	
Ohl ES	
Smyth ES	4
Delano ES	
Ellington ES	
Gregory ES	
Haffner ES	
May ES	
Tilton ES	5
Charles Hughes ES	
Johnson ES	
Lawndale ES	6
Summer ES	
Cardenas ES	
Castellanos ES	
Farragut HS	
Hammond ES	
Kennedy HS	7
Telpochalli ES	
Beethoven ES	
Bronzeville/DuSable HS	
Burke ES	
Mayo ES	
Mollison ES	
Pershing West MS	
Reavis ES	
Robinson ES	
Williams MS	8
Carter ES	
Dewey ES	
Harte ES	
Holmes ES	
Hope HS	
Ray ES	
Sexton ES	9
Sherwood ES	
Carnegie ES	
Dulles ES	
Dumas ES	
FermiES/South Shore FA	
Hyde Park HS	10
O'Keefe ES	
Banneker ES	
Bass ES	
Bond ES	
Goodlow ES	
Harvard ES	
Nicholson ES	
O'Toole ES	11
Altgeld ES	
Barton ES	
Fr. Dearborn ES	12
Joplin ES	
Gresham ES	13
Ryder ES	
Ashie ES	
Bowen HS	14
Lawrence ES	
Barnard ES	
Cullen ES	
Langston Hughes ES	
Lavizzo ES	
Mt. Vernon ES	15
Rivers ES	
Carliss HS	
Curtis ES	16
Haley ES	
Aldridge ES	
Carver ES	
Esmond ES	
Gompers ES	17



SIP: School Investment Program

warm • dry • cool • secure • welcoming • inclusive • high-tech • purpose-built

Economic Sustainability Provisions

Business Participation:

- 14 of the 17 contracts (82%) have M/WBE as lead members of the design build team.
- **Goals:**
 - MBE: 30%
 - WBE: 5%
- **Commitment:**
 - MBE: 39.42% (\$71,450,195)
 - WBE: 6.87% (\$12,461,450)

Workforce Requirements & Goals

- **Residency Requirements**
 - Residency requirement: 50% of construction work hours to be performed by City of Chicago residents
 - Community hiring requirement: 7.5% of construction work hours to be performed by residents of the project community for each project.
- **Minority Workforce Goals**
 - Journeyworkers: 25%
 - Laborers: 40%
 - Apprentices: 25%
- **Female Workforce Goals**
 - Journeyworkers: 7%
 - Laborers: 10%
 - Apprentices: 7%