



PUBLIC BUILDING COMMISSION OF CHICAGO

Southeast Area Elementary School

Remarks

JOHN POPE

10TH WARD ALDERMAN, CITY OF CHICAGO



PUBLIC BUILDING COMMISSION OF CHICAGO

Southeast Area Elementary School

Agenda

- Team Introductions
- Building Design
- Q & A



PUBLIC BUILDING COMMISSION OF CHICAGO

Southeast Area Elementary School

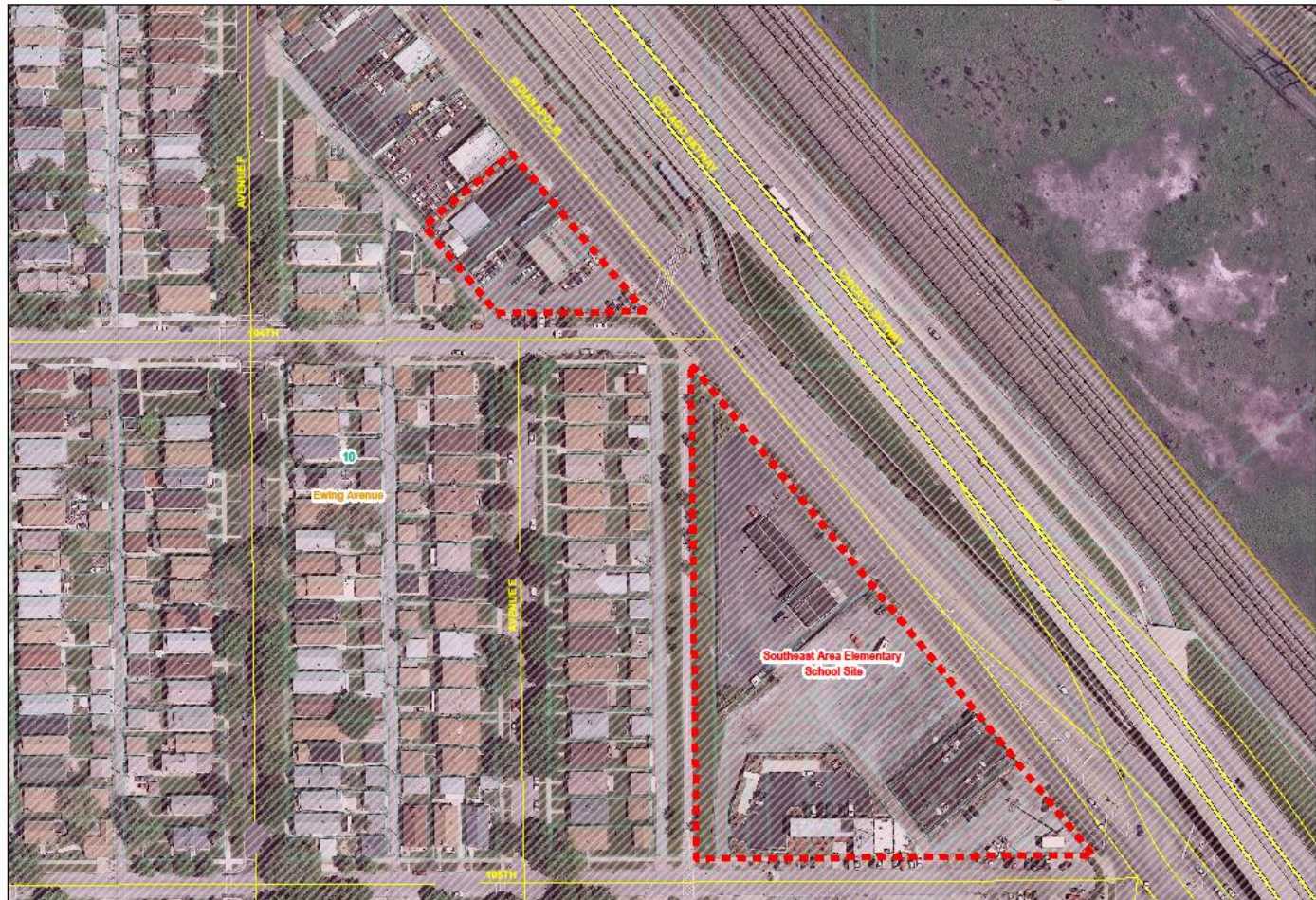
Building Design

ERIN LAVIN CABONARGI,
EXECUTIVE DIRECTOR, PBC

PUBLIC BUILDING COMMISSION OF CHICAGO

Southeast Area Elementary School

Southeast Area Elementary School
 10350 S. Indianapolis Blvd.
 Offsite Parking



Southeast Area
 Elementary School
 Project Site



TIF Area



Ward Boundary





PUBLIC BUILDING COMMISSION OF CHICAGO

Southeast Area Elementary School

Recent Projects



PUBLIC BUILDING COMMISSION OF CHICAGO

Southeast Area Elementary School



Adam Clayton Powell, Jr. Paideia Academy



PUBLIC BUILDING COMMISSION OF CHICAGO

Southeast Area Elementary School



Federico Garcia Lorca Elementary School



PUBLIC BUILDING COMMISSION OF CHICAGO

Southeast Area Elementary School



Calmecca Academy of Fine Arts & Dual Language



PUBLIC BUILDING COMMISSION OF CHICAGO

Southeast Area Elementary School



Mariano Azuela Elementary School



PUBLIC BUILDING COMMISSION OF CHICAGO

Southeast Area Elementary School



Irene C. Hernandez Middle School for the Advancement of the Sciences



PUBLIC BUILDING COMMISSION OF CHICAGO

Southeast Area Elementary School



Lab at Azuela Elementary School



PUBLIC BUILDING COMMISSION OF CHICAGO

Southeast Area Elementary School



Pre-Kindergarten / Kindergarten Classroom at Powell Academy



PUBLIC BUILDING COMMISSION OF CHICAGO

Southeast Area Elementary School



Standard Academic Classroom at Powell Academy

PUBLIC BUILDING COMMISSION OF CHICAGO

Southeast Area Elementary School



Gymnasium at Calmecca Academy



PUBLIC BUILDING COMMISSION OF CHICAGO

Southeast Area Elementary School



Playground at Powell Academy



PUBLIC BUILDING COMMISSION OF CHICAGO

Southeast Area Elementary School



Music Classroom at Lorca Elementary School



PUBLIC BUILDING COMMISSION OF CHICAGO

Southeast Area Elementary School

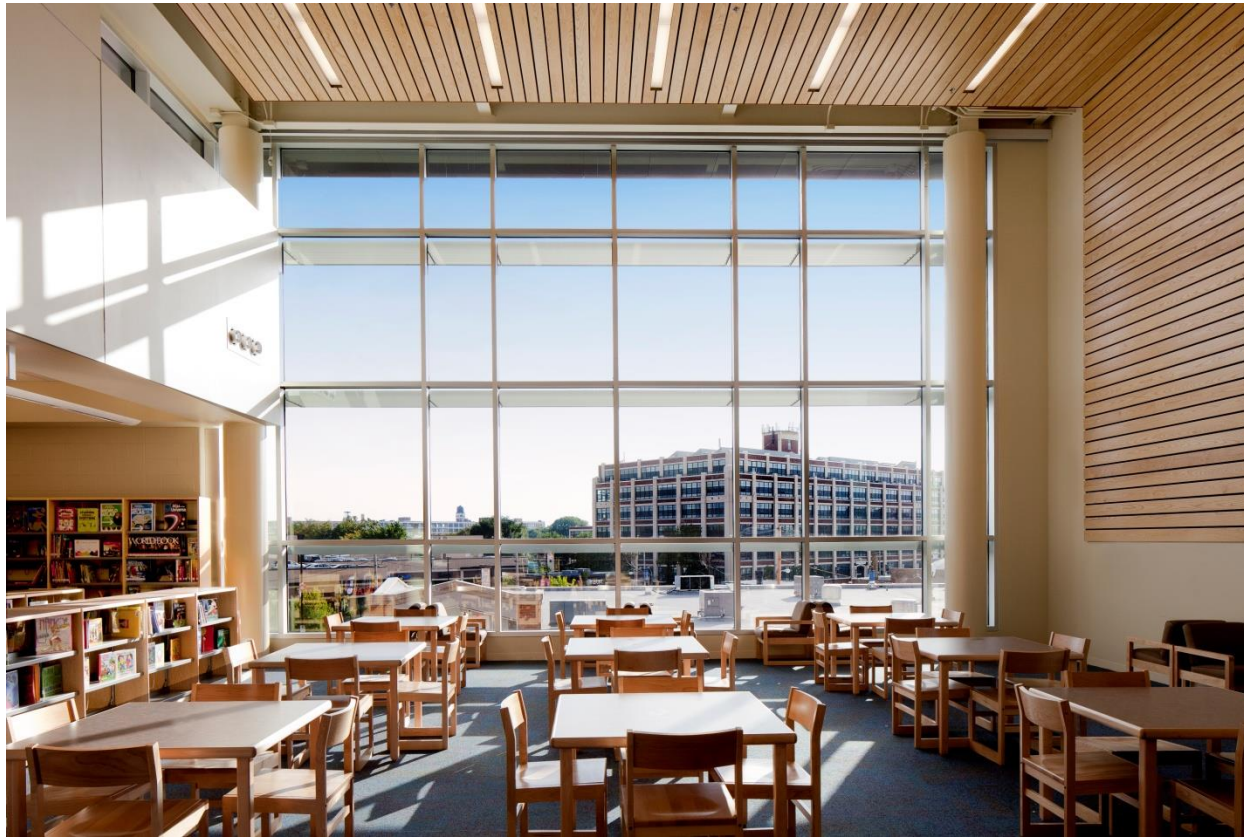


Art Classroom at Calmecca Academy



PUBLIC BUILDING COMMISSION OF CHICAGO

Southeast Area Elementary School



Library at Lorca Elementary School



PUBLIC BUILDING COMMISSION OF CHICAGO

Southeast Area Elementary School

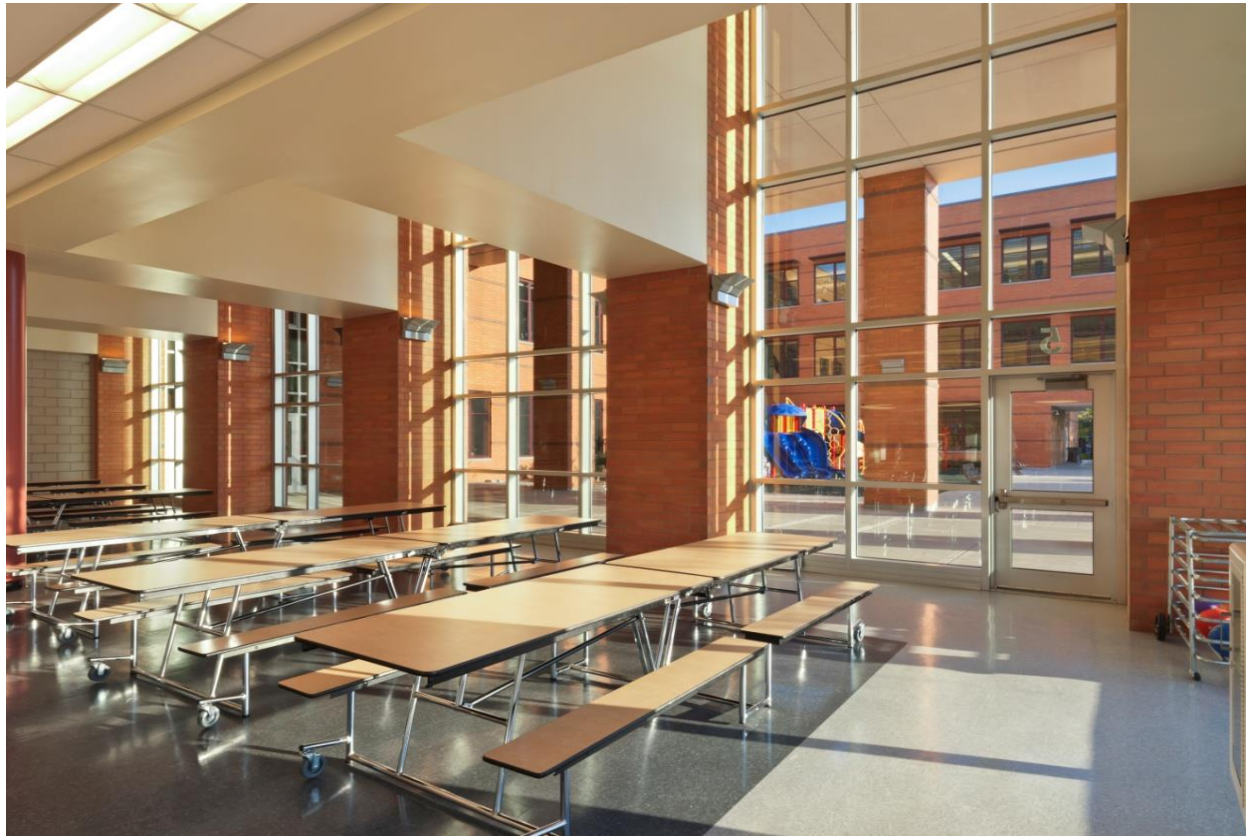


Library at Powell Academy



PUBLIC BUILDING COMMISSION OF CHICAGO

Southeast Area Elementary School



Kitchen and Dining Facilities at Lorca Elementary School



PUBLIC BUILDING COMMISSION OF CHICAGO

Southeast Area Elementary School



Kitchen and Dining Facilities at Calmecca Academy



PUBLIC BUILDING COMMISSION OF CHICAGO

Southeast Area Elementary School

Tentative Project Program

Building Features

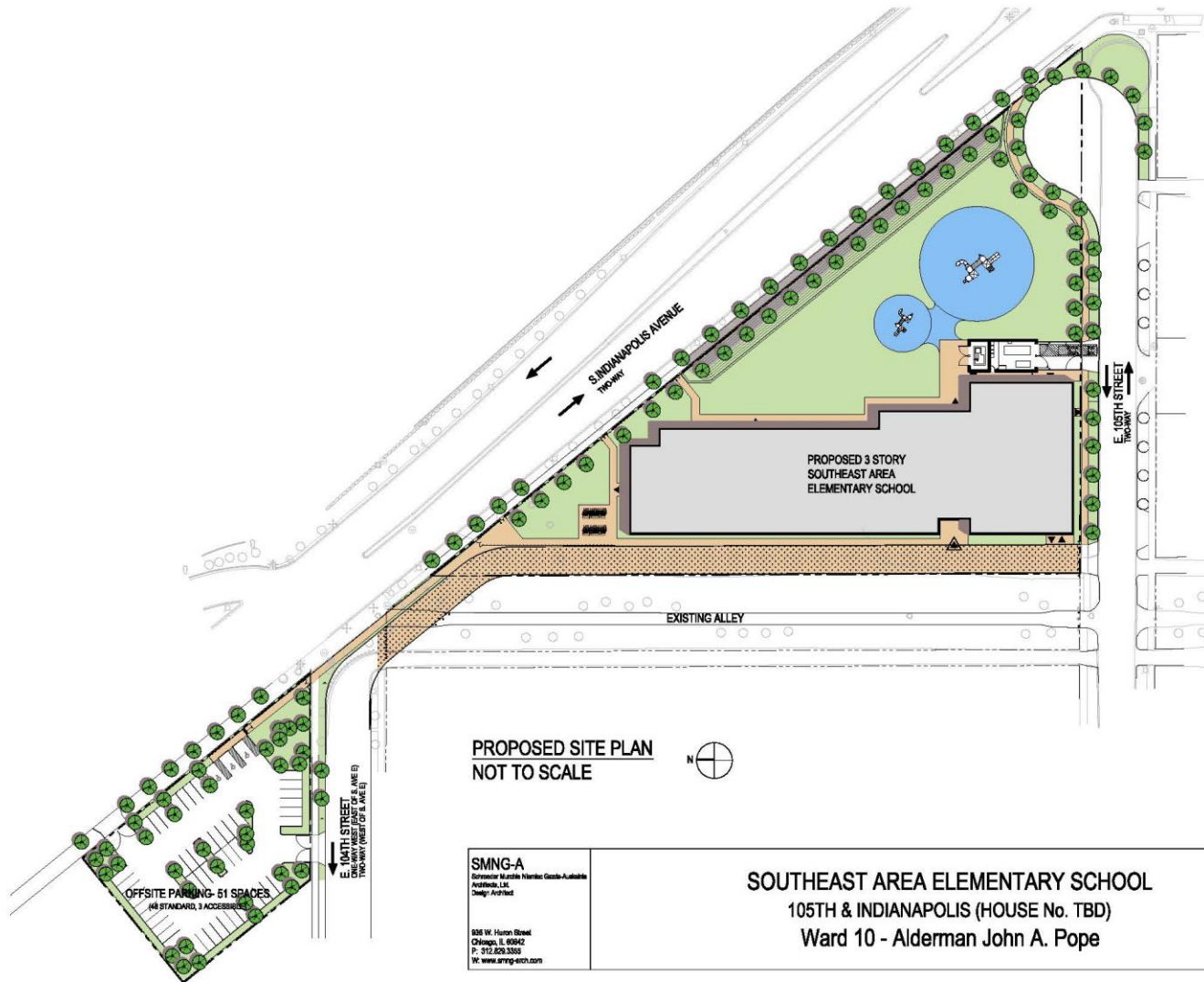
- 110,000 Square Feet (Appx.)
- 3-floor Steel Frame and Masonry Construction
- Fully Accessible to People with Disabilities
- Capacity: 1200 Students
- 44 Standard Academic Classrooms
- 2 Computer Labs
- 3 Science Classrooms
- 3 Art/Science Classrooms
- 2 Music Room
- 1 Library
- 1 Gymnasium
- 1 Administrative Suite and 1 Social Service Suite
- Kitchen and Dining Facilities
- State-of-the-art Computer Network
- Central Air Conditioning

Exterior Amenities

- Reflective Roof
- 2 Playlots
- Parking Lot

PUBLIC BUILDING COMMISSION OF CHICAGO

Southeast Area Elementary School



SMNG-A
 Corporation Marlene Hinkle-Gentle-Aubert
 Architects, Ltd.
 Chief Architect
 886 W. Huron Street
 Chicago, IL 60642
 P: 312.828.3300
 W: www.smng-arch.com

SOUTHEAST AREA ELEMENTARY SCHOOL
 105TH & INDIANAPOLIS (HOUSE No. TBD)
 Ward 10 - Alderman John A. Pope



PUBLIC BUILDING COMMISSION OF CHICAGO

Southeast Area Elementary School

Construction/Project Development Schedule:

NOVEMBER 2008	CPS APPROVAL TO BEGIN PLANNING, ACQUISITION & SITE CONTROL
NOVEMBER 2013	PLANNING, ACQUISITION AND SITE CONTROL COMPLETE
NOVEMBER 2013	CPS APPROVAL TO UNDERTAKE DESIGN & CONSTRUCTION
MARCH 2014	PROGRAM AND SCOPE CONFIRMATION
MAY 2014	DESIGN KICK-OFF
JANUARY 2015	BID DOCUMENTS ISSUED
MARCH 2015	CONSTRUCTION MOBILIZATION START
JULY 2016	CONSTRUCTION COMPLETE
SEPTEMBER 2016	OPENING OF NEW SCHOOL



PUBLIC BUILDING COMMISSION OF CHICAGO

Southeast Area Elementary School

Commitment to Sustainable Development for the Environment

- Diversion of construction waste from landfills
- Utilization of durable and recycled materials in construction
- Reflective roofs
- Occupancy light sensors/controls
- High efficiency heating and cooling systems
- Low flow/low consumption water usage
- Native and adaptive landscape species
- Aggressive storm water management



PUBLIC BUILDING COMMISSION OF CHICAGO

Southeast Area Elementary School

Commitment to Economic Sustainability Programs for the Community

- Programs Include:
 - Bid incentives for the employment of apprentices
 - Bid incentives for the employment of minority and female workers
 - Contract provisions that require at least 50% of the labor force be residents of the City of Chicago
 - Contract provisions with regard for community hiring, helping to employ those closest to the work at hand
 - Contract provisions for student hiring opportunities
 - Contract provisions that require minority- and women-owned business participation
 - Contract provisions for local business participation



PUBLIC BUILDING COMMISSION OF CHICAGO

Southeast Area Elementary School

Comments & Concerns

- Point of Contact:
 - Molly Sullivan, Deputy Director,
Media and Public Information, PBC
 - 312-744-9277
 - Molly.Sullivan@cityofchicago.org



PUBLIC BUILDING COMMISSION OF CHICAGO

Southeast Area Elementary School

QUESTION & ANSWER