



# PUBLIC BUILDING COMMISSION OF CHICAGO

Minnie Mars Jamieson Elementary School Annex

December 2, 2014

WELCOME

ROBERT BAUGHMAN,  
*PRINCIPAL,*

*MINNIE MARS JAMIESON ELEMENTARY SCHOOL*



# PUBLIC BUILDING COMMISSION OF CHICAGO

Minnie Mars Jamieson Elementary School Annex

December 2, 2014

## REMARKS

PATRICK J. O'CONNOR,  
*40<sup>TH</sup> WARD ALDERMAN, CITY OF CHICAGO*



# PUBLIC BUILDING COMMISSION OF CHICAGO

Minnie Mars Jamieson Elementary School Annex

December 2, 2014

## PBC PRESENTATION ON BUILDING DESIGN

ERIN LAVIN CABONARGI,  
*EXECUTIVE DIRECTOR, PBC*



# PUBLIC BUILDING COMMISSION OF CHICAGO

Minnie Mars Jamieson Elementary School Annex

December 2, 2014





# PUBLIC BUILDING COMMISSION OF CHICAGO

Minnie Mars Jamieson Elementary School Annex

December 2, 2014

## Recent Projects





# PUBLIC BUILDING COMMISSION OF CHICAGO

Minnie Mars Jamieson Elementary School Annex

December 2, 2014



Sauganash Elementary School Addition



# PUBLIC BUILDING COMMISSION OF CHICAGO

Minnie Mars Jamieson Elementary School Annex

December 2, 2014



Sauganash Elementary School Addition





# PUBLIC BUILDING COMMISSION OF CHICAGO

Minnie Mars Jamieson Elementary School Annex

December 2, 2014



Garvy Elementary School Addition





# PUBLIC BUILDING COMMISSION OF CHICAGO

Minnie Mars Jamieson Elementary School Annex

December 2, 2014



Garvy Elementary School Addition



# PUBLIC BUILDING COMMISSION OF CHICAGO

Minnie Mars Jamieson Elementary School Annex

December 2, 2014



Classroom at Garvy Elementary School Addition



# PUBLIC BUILDING COMMISSION OF CHICAGO

Minnie Mars Jamieson Elementary School Annex

December 2, 2014



Classroom at Sauganash Elementary School Addition





# PUBLIC BUILDING COMMISSION OF CHICAGO

Minnie Mars Jamieson Elementary School Annex

December 2, 2014



Music Classroom at Alexander Graham Bell Elementary School



# PUBLIC BUILDING COMMISSION OF CHICAGO

Minnie Mars Jamieson Elementary School Annex

December 2, 2014



Science Classroom at Edgebrook Elementary School Addition





# PUBLIC BUILDING COMMISSION OF CHICAGO

Minnie Mars Jamieson Elementary School Annex

December 2, 2014



Kitchen and Dining Facilities at Edgebrook Elementary School Addition





# PUBLIC BUILDING COMMISSION OF CHICAGO

Minnie Mars Jamieson Elementary School Annex

December 2, 2014



Kitchen and Dining Facilities at Sauganash Elementary School Addition



# PUBLIC BUILDING COMMISSION OF CHICAGO

Minnie Mars Jamieson Elementary School Annex

December 2, 2014

## Proposed Project Program

### Existing Building:

- 30 classrooms

### Renovations:

- Renovation of existing kitchen into a classroom
- Installation of new ramp to provide access to 6 classrooms at existing 2<sup>nd</sup> floor
- Conversion of existing classroom and toilet room adjacent to ramp to new teacher's lounge and toilet room
- IT improvements including Wireless Access Points
- Intercom system replacement
- Expansion of existing fire alarm system
- ADA Improvements

### New Annex:

- 14 classrooms
- 1 kitchen and lunchroom
- 1 science classroom
- 1 music classroom
- Administrative office

### Exterior Amenities:

- New playlot
- Modular removal
- New sod area

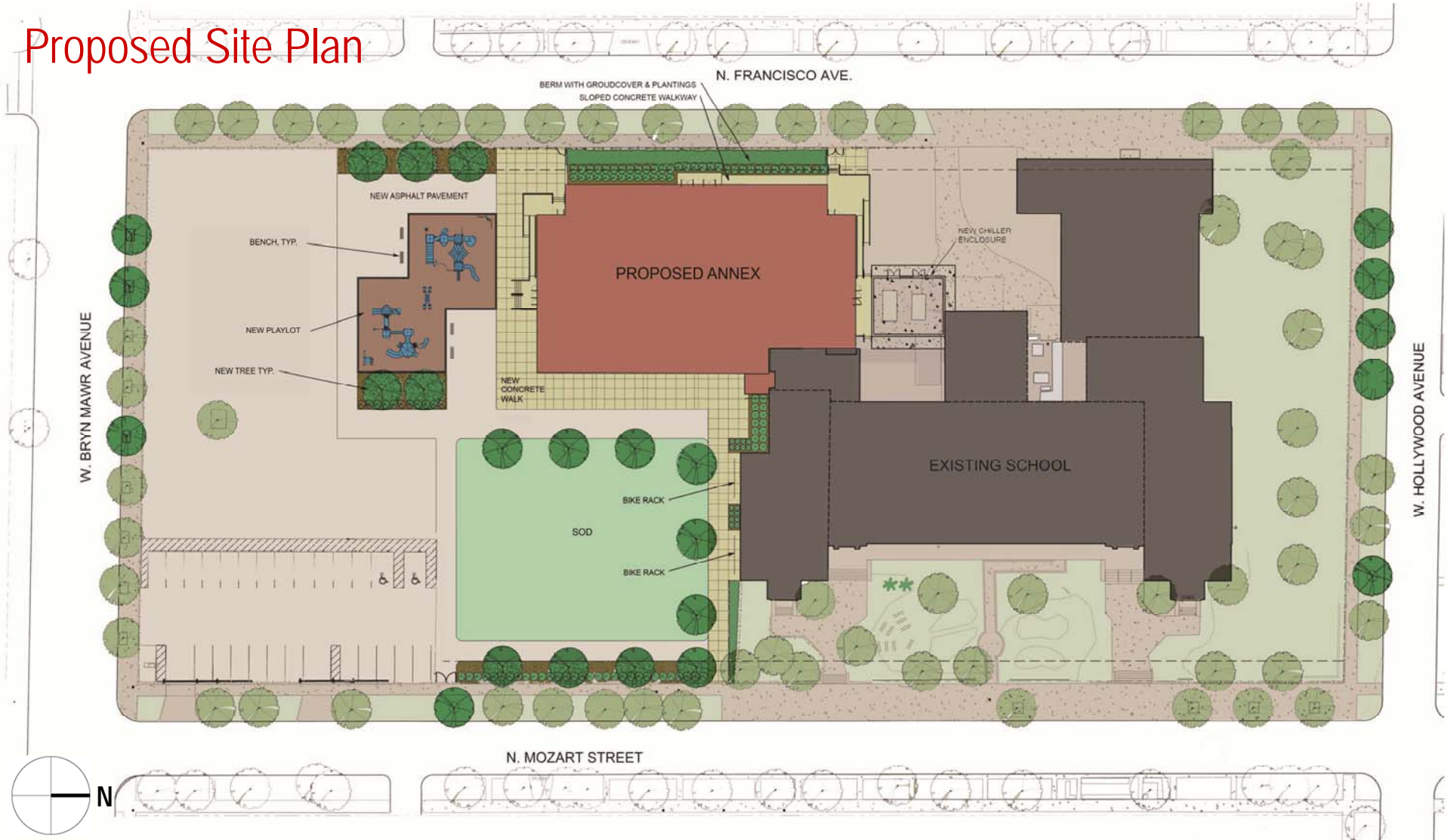


# PUBLIC BUILDING COMMISSION OF CHICAGO

## Minnie Mars Jamieson Elementary School Annex

December 2, 2014

### Proposed Site Plan





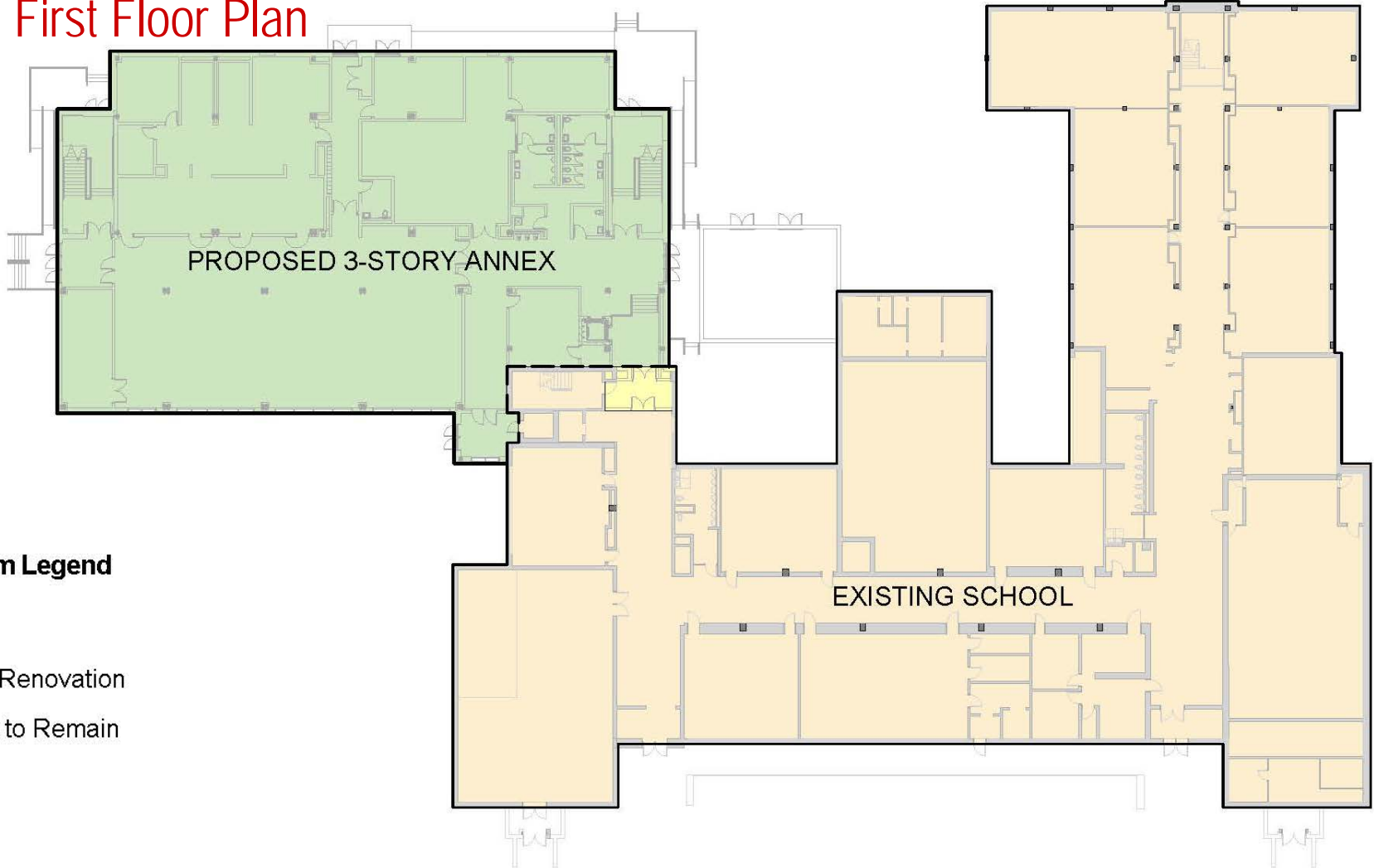


# PUBLIC BUILDING COMMISSION OF CHICAGO

Minnie Mars Jamieson Elementary School Annex

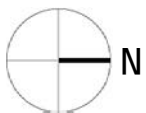
December 2, 2014

## Overall First Floor Plan



### Program Legend

- Annex
- Area of Renovation
- Existing to Remain





# PUBLIC BUILDING COMMISSION OF CHICAGO

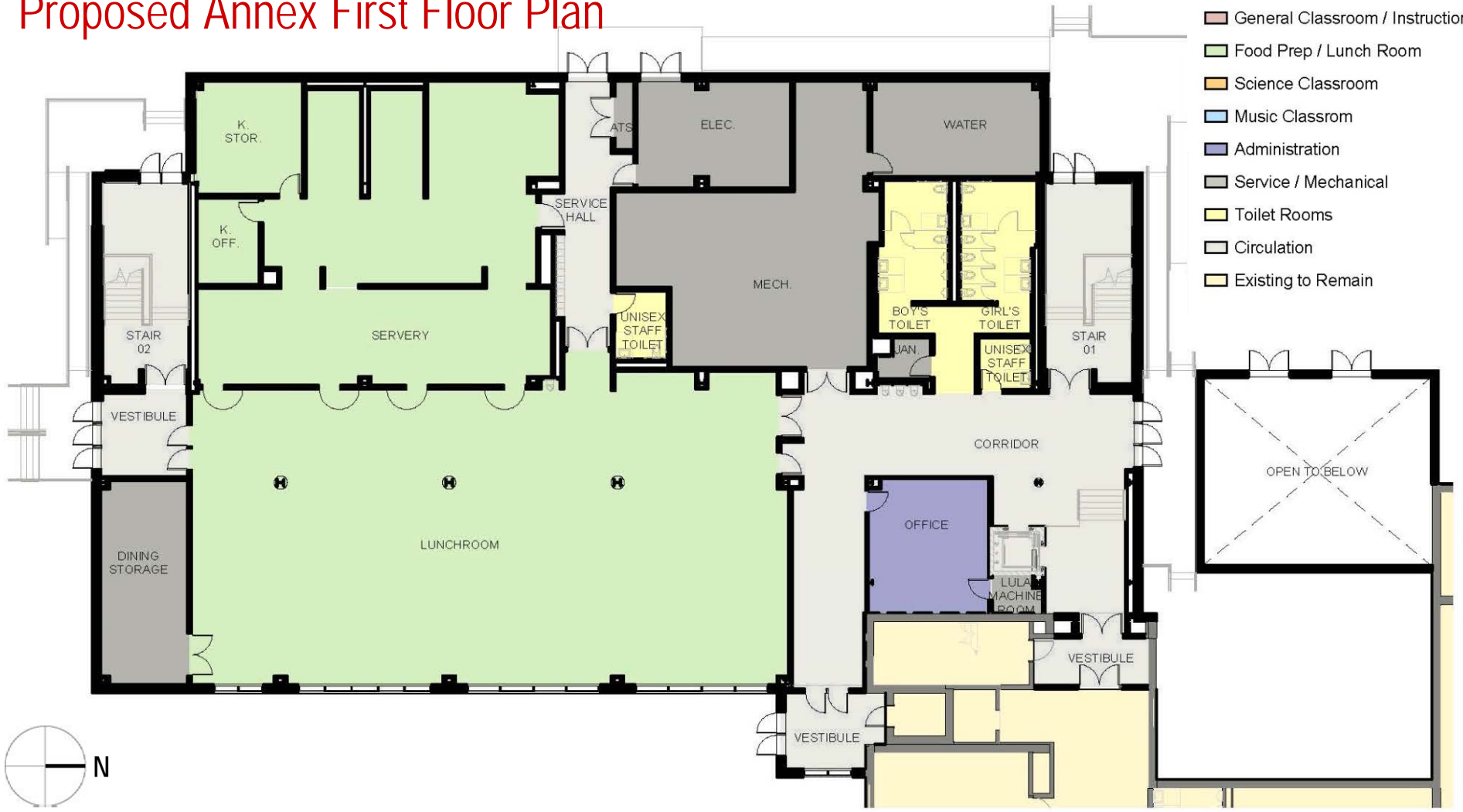
Minnie Mars Jamieson Elementary School Annex

December 2, 2014

## Proposed Annex First Floor Plan

### Program Legend

- General Classroom / Instruction
- Food Prep / Lunch Room
- Science Classroom
- Music Classroom
- Administration
- Service / Mechanical
- Toilet Rooms
- Circulation
- Existing to Remain



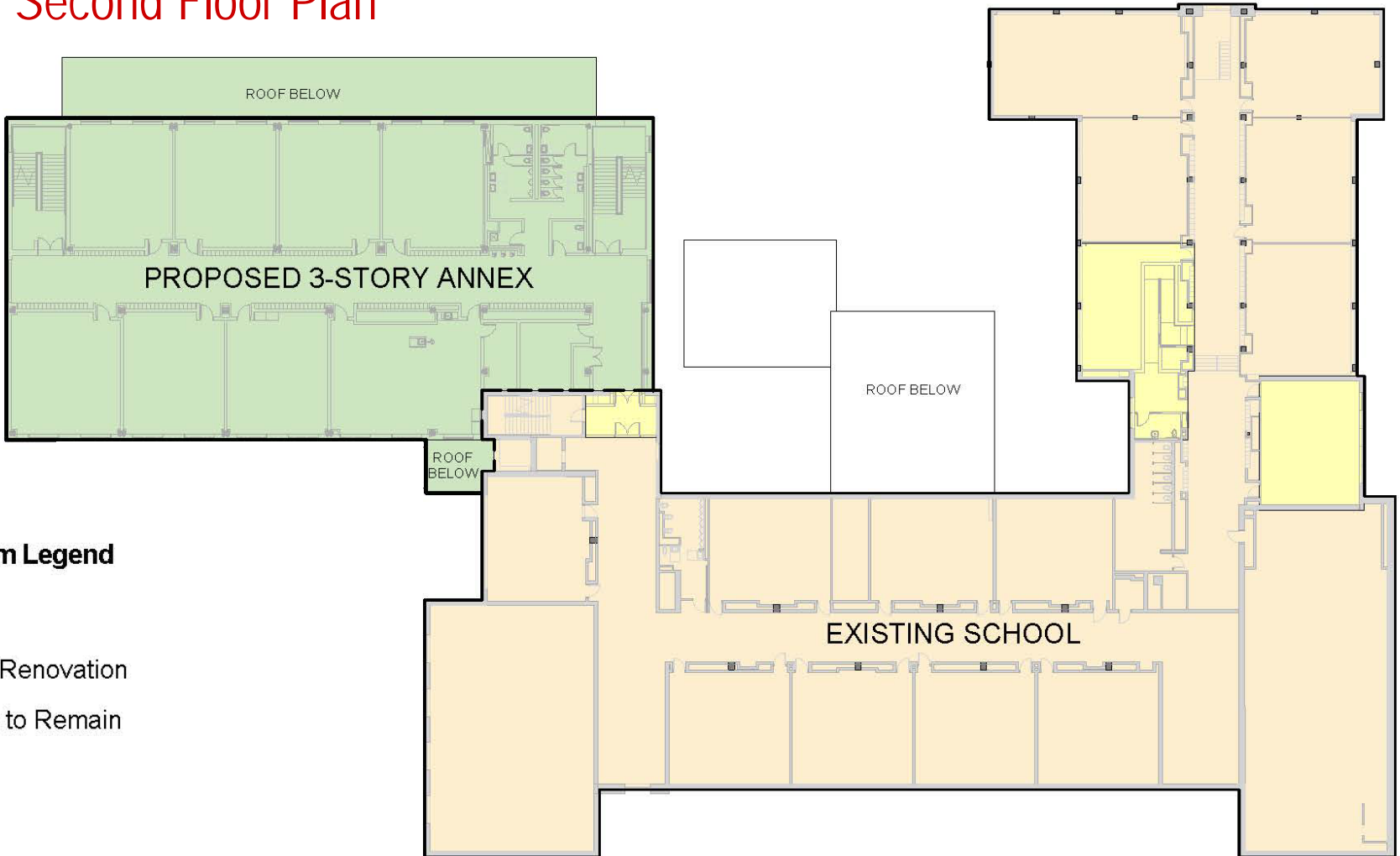


# PUBLIC BUILDING COMMISSION OF CHICAGO

Minnie Mars Jamieson Elementary School Annex

December 2, 2014

## Overall Second Floor Plan



### Program Legend

- Annex
- Area of Renovation
- Existing to Remain







# PUBLIC BUILDING COMMISSION OF CHICAGO

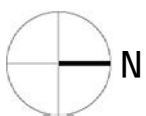
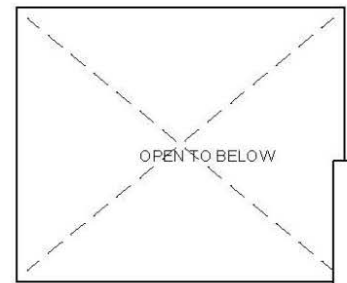
## Minnie Mars Jamieson Elementary School Annex

December 2, 2014

### Proposed Annex Second Floor Plan

#### Program Legend

- General Classroom / Instruction
- Food Prep / Lunch Room
- Science Classroom
- Music Classroom
- Administration
- Service / Mechanical
- Toilet Rooms
- Circulation
- Existing to Remain



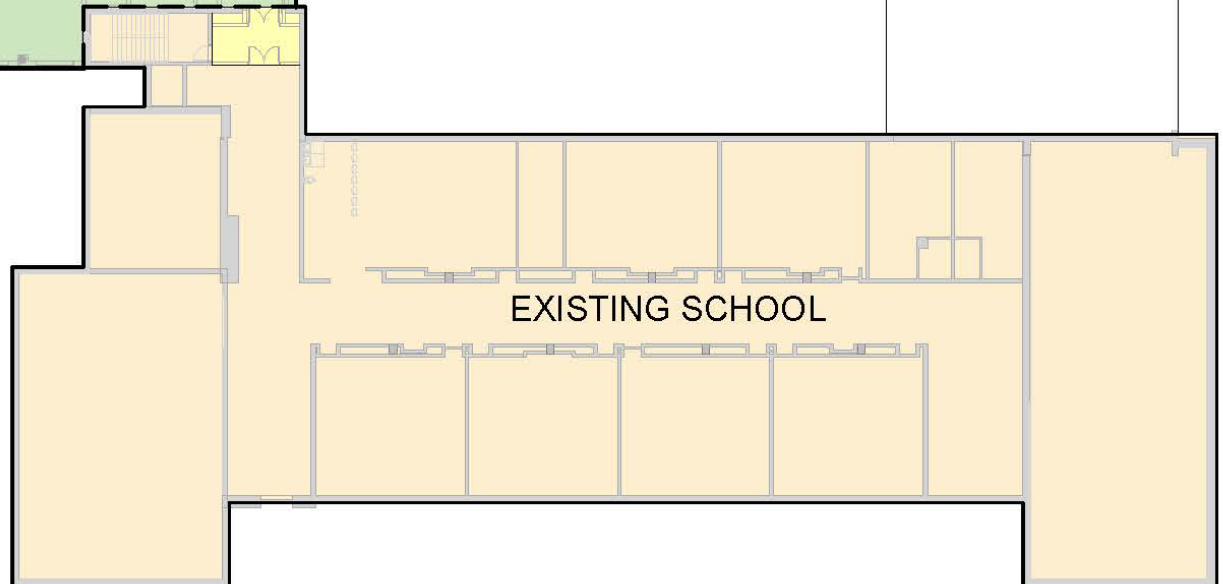
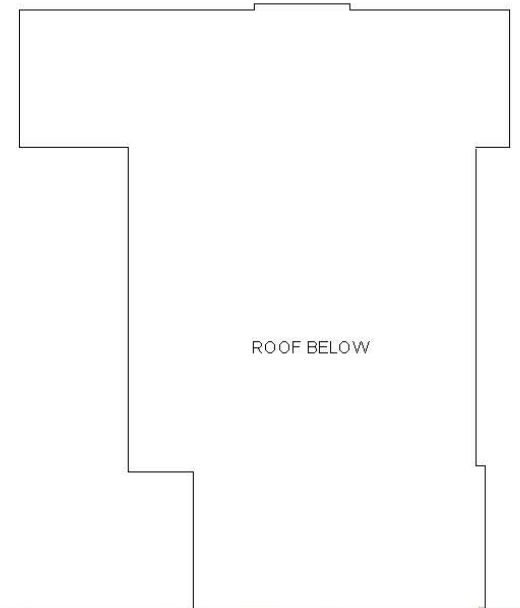
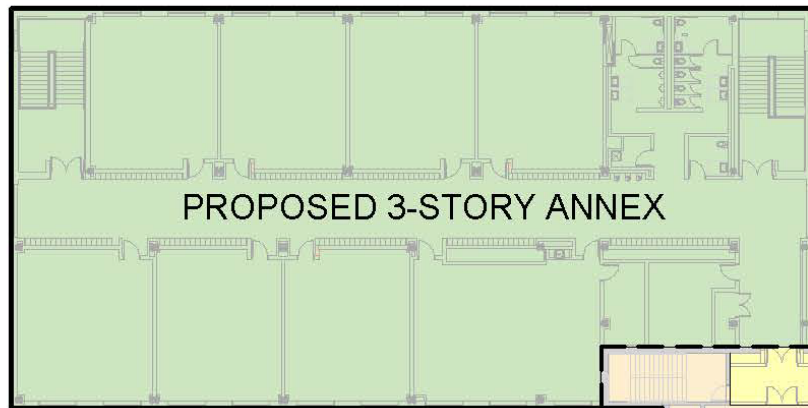


# PUBLIC BUILDING COMMISSION OF CHICAGO




Minnie Mars Jamieson Elementary School Annex

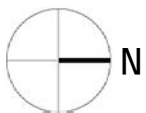
December 2, 2014

## Overall Third Floor Plan



### Program Legend

-  Annex
-  Area of Renovation
-  Existing to Remain





# PUBLIC BUILDING COMMISSION OF CHICAGO

Minnie Mars Jamieson Elementary School Annex

December 2, 2014

## Proposed Annex Third Floor Plan

### Program Legend

- General Classroom / Instruction
- Food Prep / Lunch Room
- Science Classroom
- Music Classrom
- Administration
- Service / Mechanical
- Toilet Rooms
- Circulation
- Existing to Remain





# PUBLIC BUILDING COMMISSION OF CHICAGO

Minnie Mars Jamieson Elementary School Annex

December 2, 2014

## Rendering



# Anticipated Project Development Schedule

JULY 2014	FORMULATION TO PBC BOARD
SEPTEMBER 2014	ARCHITECT APPOINTMENT
NOVEMBER 2014	DESIGN DEVELOPMENT DOCUMENTS ISSUED
APRIL 2015	ISSUE FOR BID
JUNE 2015	CONSTRUCTION MOBILIZATION / START
JUNE 2016	ANNEX CONSTRUCTION COMPLETE
SUMMER 2016	RENOVATION WORK
JULY/AUGUST 2016	FURNITURE, FIXTURES & EQUIPMENT INSTALLATION
SEPTEMBER 2016	OPENING OF ANNEX



# PUBLIC BUILDING COMMISSION OF CHICAGO

Minnie Mars Jamieson Elementary School Annex

December 2, 2014

## Commitment to Sustainable Development for the Environment

- Diversion of construction waste from landfills
- Utilization of durable and recycled materials in construction
- Reflective roofs
- Occupancy light sensors/controls
- High efficiency heating and cooling systems
- Low flow/low consumption water usage
- Native and adaptive landscape species
- Aggressive storm water management





## Commitment to Economic Sustainability Programs for the Community

- Bid incentives for the employment of apprentices
- Bid incentives for the employment of minority and female workers
- Contract provisions that require at least 50% of the labor force be residents of the City of Chicago
- Contract provisions with regard for community hiring, helping to employ those closest to the work at hand
- Contract provisions that require minority- and women-owned business participation
- Contract provisions for local business participation



# PUBLIC BUILDING COMMISSION OF CHICAGO

Minnie Mars Jamieson Elementary School Annex

December 2, 2014

## Comments & Concerns

Point of Contact:

Molly Sullivan, Deputy Director,  
Media and Public Information, PBC

312-744-9277

[Molly.Sullivan@cityofchicago.org](mailto:Molly.Sullivan@cityofchicago.org)



# PUBLIC BUILDING COMMISSION OF CHICAGO

Minnie Mars Jamieson Elementary School Annex

December 2, 2014

## QUESTION & ANSWER